



Inflatable Boats

Advanced stability • Comfort • Reliability

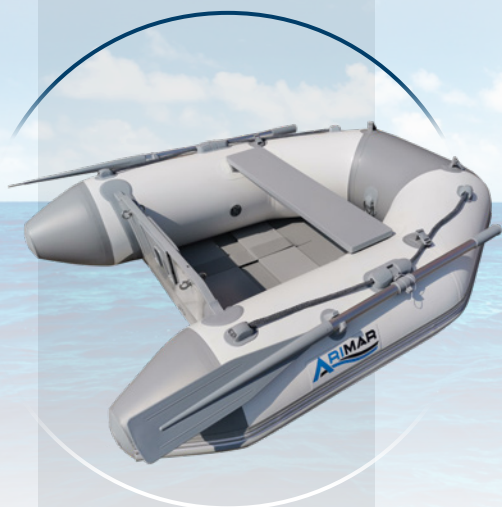


Inflatable Boats

ROLL

The best option for a small-sized, comfortable & easy-to-handle inflatable boat

- Easy transport & storage
- Simple & fast inflation
- Can be transported in a convenient **lightweight bag**
- **Ideal for boats with limited stowage space**
- Floor with **wooden slats**



Wooden Slats

Code	501412	501413	501414
"ROLL"	ROLL 185	ROLL 210	ROLL 240
Passenger Capacity	2	2	3
Max. Power (HP)	4	4	5,4
Engine Shaft	S	S	S
Floor	Wooden slats (2)	Wooden slats (3)	Wooden slats (3)
External Dim. (cm)	185 x 155	210 x 155	240 x 160
Internal Dim. (cm)	102,5 x 75	127,5 x 75	154 x 80
Tube Diameter (cm)	40	40	40
Tube Material	PVC	PVC	PVC
CE Category	-	-	-
Compartments	3	3	3
Standard Equipment	Repair kit, couple of oars, inflator, wooden bench, carrying bag		
Weight (kg)*	24	27	29

SOFT LINE

The most popular one among our folding inflatable boats

- Easy-to-transport, stable & comfortable
- With inflatable keel that **reproduces the traditional V-shaped hull**
- **Much lighter** compared to others in its category
- **High-pressure inflatable floor**
- **"Easy System" technology** for easy folding without removing the floor



Inflatable Floor

Code	501421	501422	501423	502284
"SOFT LINE"	SOFT LINE 210	SOFT LINE 240	SOFT LINE 270	SOFT LINE 320
Passenger Capacity	2	3	3+1	4+1
Max. Power (HP)	4	6	10	15
Engine Shaft	S	S	S	S
Floor	Inflatable	Inflatable	Inflatable	Inflatable
External Dim. (cm)	210 x 155	240 x 160	270 x 160	320 x 170
Internal Dim. (cm)	127,5 x 75	154 x 80	170 x 76	220 x 86
Tube Diameter (cm)	40	40	42	42
Tube Material	PVC	PVC	PVC	PVC
CE Category	-	-	D	D
Compartments	3+1+1	3+1+1	3+1+1	3+1+1
Standard Equipment	Repair kit, couple of oars, inflator, wooden bench, carrying bag			
Weight (kg)*	26	29	30	36

Actual product markings and colours may differ slightly from the pictures.

* This refers to the boat's weight, only with the floor/wooden slats & the seat already installed.

** Given data subject to tolerances are +/- 2,5 % for dimensions, +/- 5 % for weight.

Inflatable Boats

CLASSIC

Steadiness & safety at their finest

- Great sturdiness
- Functionality and safety
- With inflatable keel that reproduces the traditional V-shaped hull
- **Aluminium floor**

Code	501416	501417	501418	501419
"CLASSIC"	CLASSIC 240	CLASSIC 270	CLASSIC 320	CLASSIC 360
Passenger Capacity	3	3+1	4	5
Max. Power (HP)	6	10	15	25
Engine Shaft	S	S	S	S
Floor	Aluminium	Aluminium	Aluminium	Aluminium
External Dim. (cm)	240 x 160	270 x 160	320 x 170	360 x 170
Internal Dim. (cm)	154 x 80	170 x 76	220 x 86	258 x 82
Tube Diameter (cm)	40	42	42	44
Tube Material	PVC	PVC	PVC	PVC
CE Category	-	D	D	C
Compartments	3+1	3+1	3+1	3+1
Standard Equipment	Repair kit, couple of oars, inflator, wooden bench, carrying bag			
Weight (kg)*	41	42	52	58

* This refers to the boat's weight, only with the floor/wooden slats & the seat already installed.

** Given data subject to tolerances are +/- 2,5 % for dimensions, +/- 5% for weight.

HERCULES II

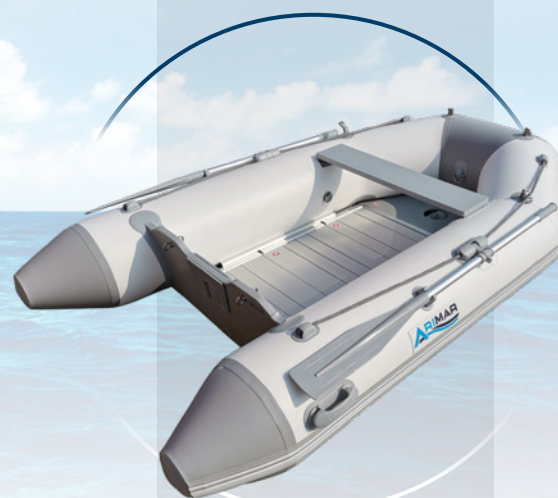
One-of-a-kind comfort & performance

- Advanced stability, safety & speed
- Wide space on board
- Can be used either as **tender or autonomous one**
- The best choice for coastal boat trips
- With double **fiberglass hull (300 & 330) & anti-slip floor**

Code	502295	502296	502297
"HERCULES II"	HERCULES II 250	HERCULES II 300	HERCULES II 330
Passenger Capacity	2	4	5
Max. Power (HP)	5	15	20
Engine Shaft	S	S	S
Floor & Hull	Fiberglass	Double Fiberglass	Double Fiberglass
External Dim. (cm)	250 x 160	305 x 165	330 x 165
Internal Dim. (cm)	172 x 70	201 x 75	231 x 75
Tube Diameter (cm)	43	42	42
Tube Material	PVC (Mehler Valmex)	PVC (Mehler Valmex)	PVC (Mehler Valmex)
CE Category	D	D	D
Compartments	3	3	3
Standard Equipment	Repair kit, couple of oars, inflator, wooden bench		
Weight (kg)*	50	64	67

* This refers to the boat's weight only, without accessories.

** Given data subject to tolerances are +/- 2,5 % for dimensions, +/- 5% for weight.



Aluminium Floor



Double Floor

Fiberglass Hull

Actual product markings and colours may differ slightly from the pictures.

Inflatable Boats

ELITE

The most comfortable cruising experience for a tender

- Advanced stability, safety & speed
- Easy-to-manage
- Can be supplied with removable seat for extra comfort (250 & 270)
- With **fiberglass hull & double flat floor**

Double Floor



Fiberglass Hull

Code	501425	501428	501429
"ELITE"	ELITE 220	ELITE 250	ELITE 270
Passenger Capacity	2	3	3
Max Power (HP)	4	6	8
Engine Shaft	S	S	S
Floor & Hull	Double Fiberglass	Double Fiberglass	Double Fiberglass
External Dim. (cm)	220 x 132 x 53	248 x 150 x 53	271 x 152 x 53
Internal Dim. (cm)	132 x 60	172 x 69	172 x 70
Tube Diameter (cm)	35	37	40
Tube Material	PVC	PVC	PVC
CE Category	-	-	D
Compartments	2	2	3
Standard Equipment	Repair kit, couple of oars, inflator		
Weight (kg)*	35	38	49

TOP LINE

Advanced stability & comfortable cruising experience

- Advanced stability, safety & speed
- Comfortable cruising experience due to its **wide space** on board
- Ideal for coastal boat trips
- Can be used either as **tender or autonomous** one
- Can be supplied with a driving console and a pilot bench with pillow (320 & 360)
- With **fiberglass hull & double flat floor**

Double Floor



Fiberglass Hull

Code	501430	501431	501432
"TOP LINE"	TOP LINE 280	TOP LINE 320	TOP LINE 360
Passenger Capacity	4	5	5
Max Power (HP)	10	15	25
Engine Shaft	S	S	S
Floor & Hull	Double Fiberglass	Double Fiberglass	Double Fiberglass
External Dim. (cm)	280 x 164 x 56	317 x 167 x 56	351 x 167 x 56
Internal Dim. (cm)	192 x 80	230 x 81	260 x 81
Tube Diameter (cm)	45/40	43	43
Tube Material	PVC	PVC	PVC
CE Category	D	D	C
Compartments	3	3	3
Standard Equipment	Repair kit, couple of oars, inflator		
Weight (kg)*	55	71	78

Actual product markings and colours may differ slightly from the pictures.

* This refers to the boat's weight only, without accessories.

** Given data subject to tolerances are +/- 2,5 % for dimensions, +/- 5% for weight.

Inflatable Boats

OPEN

Excellent comfort & durability for every kind of adventure

- Enlarged bow box (can fit 24L fuel tank)
- Under deck tunnel for fuel line from bow box to stern
- Bow step
- EVA on deck and bow box lid
- Removable bow cushion
- One bench seat (360) / two bench seats (420)
- Welded towing eyes on hull
- With aluminium hull

Code	502288	502289
"OPEN"	OPEN 360	OPEN 420
Passenger Capacity	6	8
Max Power (HP)	25	40
Engine Shaft	S	L
Floor & Hull	Aluminium	Aluminium
External Dim. (cm)	360 x 174	420 x 200
Internal Dim. (cm)	284 x 83	309 x 104
Dead Rise	19°	20°
Tube Diameter (cm)	38-44	40-46
Tube Material	PVC (Mehler Valmex)	PVC (Mehler Valmex)
CE Category	C	C
Compartments	3	4
Weight (kg)*	89	113

SPORT STILE

Performance, style & leisure

- Enlarged bow box (can fit 12L fuel tank for 320 and 24L fuel tank for 360)
- Bow step (320)
- Welded towing eyes on hull (320 & 360)
- Built-in driver seat with steering column (320) / with storage (360 & 460)
- Bilge pump system (360 & 460)
- Sundek (cushions included) (360 & 460)
- Transducer mount post (360 & 460)
- Built-in fuel tank of 45 L (460)
- Swim ladder (inox, telescopic) (460)
- EVA on deck and bow box lid
- Removable bow cushion
- With aluminium hull

Code	502290	502291	502292
"SPORT STILE"	SPORT STILE 320	SPORT STILE 360	SPORT STILE 460
Passenger Capacity	5	6	9
Max Power (HP)	20	25	60
Engine Shaft	L	L	L
Floor & Hull	Aluminium	Aluminium	Aluminium
External Dim. (cm)	320 x 170	360 x 174	460 x 210
Internal Dim. (cm)	177 x 83	260 x 83	302 x 111
Dead Rise	20°	20°	20°
Tube Diameter (cm)	35-42	38-44	40-46
Tube Material	PVC (Mehler Valmex)	PVC (Mehler Valmex)	PVC (Mehler Valmex)
CE Category	C	C	C
Compartments	3	3	4
Weight (kg)*	65	89	255

* This refers to the boat's weight only, without accessories.

** Given data subject to tolerances are +/- 2,5 % for dimensions, +/- 5% for weight.



Aluminium Hull



Aluminium Hull



Available in different colours upon request.

Actual product markings and colours may differ slightly from the pictures.

Inflatable Boats

XCELLENCE

Xcellence Redefined

- Driver seat with backrest and storage space
- Wide bow step
- Built-in fuel tank (105L for 520 and 115L for 580)
- Console with footrest and high windscreen
- Removable sunbed
- Full EVA deck
- Swimming platforms
- Transducer mount post
- Built-in stern bench with storage space
- Tube material: Mehler/VALMEX (520), Hypalon/ORCA (580)
- With aluminium hull

Aluminium Hull



Available in different colours upon request.

Code	502293	502294
"XCELLENCE"	XCELLENCE 520	XCELLENCE 580
Passenger Capacity	10	12
Max Power (HP)	90	115
Engine Shaft	L	XL
Max. Engine Weight	170	190
Floor & Hull	Aluminium	Aluminium
External Dim. (cm)	520 x 234	580 x 246
Internal Dim. (cm)	354 x 124	399 x 140
Dead Rise	22°	20°
Tube Diameter (cm)	46-53	49-53
Tube Material	PVC (Mehler Valmex)	ORCA® Hypalon
CE Category	C	C
Compartments	5	6
Weight (kg)*	390	525

* This refers to the boat's weight only, without accessories.

** Given data subject to tolerances are +/- 2,5 % for dimensions, +/- 5% for weight.

RESCUE BOAT

Ideal for lifeguard towers & academies

- Orange colour to be easily seen at sea
- Great sturdiness and safety
- Aluminium floor



Aluminium Floor

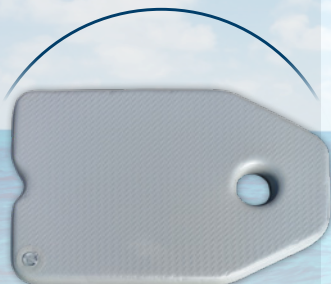
Actual product markings and colours may differ slightly from the pictures.

Code	501642
"Rescue Boat"	Rescue Boat 330
Passenger Capacity	4
Max. Power (HP)	15
Engine Shaft	S
Floor	Aluminium
External Dim. (cm)	330 x 170
Internal Dim. (cm)	230 x 86
Tube Diameter (cm)	42
Tube Material	PVC
CE Category	D
Compartments	3+1
Standard Equipment	Repair kit, couple of oars, inflator, wooden bench, carrying bag
Weight (kg)*	52

* This refers to the boat's weight, only with the floor/wooden slats & the seat already installed.

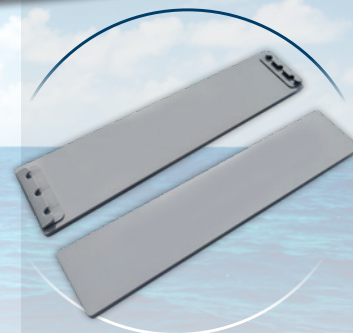
** Given data subject to tolerances are +/- 2,5 % for dimensions, +/- 5% for weight.

SPARE PARTS & ACCESSORIES



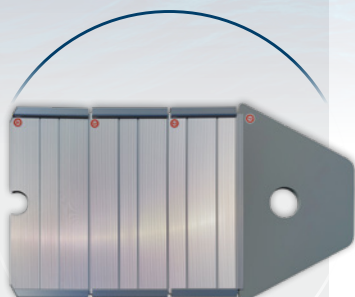
Inflatable Flooring

Code	Compatible with
501973	SOFT LINE 210
501974	SOFT LINE 240
501975	SOFT LINE 270
502285	SOFT LINE 320



Wooden Bench

Code	Compatible with
501981	ROLL 185 210 SOFT LINE 210
501982	ROLL 240 SOFT LINE 240 CLASSIC 240 HERCULES 240
501983	SOFT LINE 270 CLASSIC 270
501984	SOFT LINE 320 CLASSIC 320 RESCUE BOAT 330
501985	CLASSIC 360



Aluminium Flooring

Code	Compatible with
501976	CLASSIC 240
501977	CLASSIC 270
501978	CLASSIC 320
501979	RESCUE BOAT 330
501980	CLASSIC 360



Transom Pad

Code	Colour	Length (mm)	Height (mm)	Thickness (mm)	Compatible with
74443	Black	270	180	10	ROLL 185 210 240 SOFT LINE 210 240 270 320 CLASSIC 240 270 320 360
74444	Grey				



Code	Colour	Length (mm)	Height (mm)	Thickness (mm)	Compatible with
74445	Black	300	120	10	ROLL 185 210 240 SOFT LINE 210 240 270 320 CLASSIC 240 270 320 360
74446	Grey				



Transom Pad

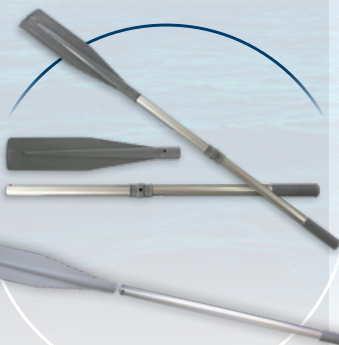
Code	Colour	Length (mm)	Height (mm)	Thickness (mm)	Compatible with
45339	Black	270	98	8	ELITE 220 250 270 TOP LINE 280 320 360
45337	White				
45338	Grey				



Code	Colour	Length (mm)	Height (mm)	Thickness (mm)	Compatible with
45331	Black	300	220	7	ELITE 220 250 270 TOP LINE 280 320 360
45329	White				
45330	Grey				

Actual product markings and colours may differ slightly from the pictures.

SPARE PARTS & ACCESSORIES



Rowlock Socket with Metal Pin

Code	Colour	Compatible with
74447	Grey	ROLL 185 210 240
		SOFT LINE 210 240 270 320
		CLASSIC 240 270 320 360
		ELITE 220 250 270
		TOP LINE 280 320 360

Heavy Duty Handle for Inflatable Boat

Code	Colour	Length (mm)	Height (mm)	Compatible with
74448	Grey	220	90	ROLL 185 210 240
				SOFT LINE 210 240 270 320
				CLASSIC 240 270 320 360
				ELITE 220 250 270
				TOP LINE 280 320 360

Rope Holder for Inflatable Boat

Code	Colour	Dimensions (mm)	Compatible with
74703	Grey	100 x 70 x 32,5	ROLL 185 210 240
			SOFT LINE 210 240 270 320
			CLASSIC 240 270 320 360
			ELITE 220 250 270
			TOP LINE 280 320 360

Paddle Holder for Inflatable Boat

Code	Colour	Dimensions (mm)	Compatible with
74704	Grey	100 x 70 x 57,5	ROLL 185 210 240
			SOFT LINE 210 240 270 320
			CLASSIC 240 270 320 360
			ELITE 220 250 270
			TOP LINE 280 320 360

Non-return Drain Valve Set, with Plug

Code	Colour	Transom Thickness (mm)	Compatible with
74449	Grey	25	Roll 185 210 240
			SOFT LINE 210 240 270 320
			Classic 240 270 320 360

Paddle with Removable Blade

Code	Colour	Length (cm)	Diameter (mm)	Compatible with
74585	Grey	144,5	35	ROLL 185 210 SOFT LINE 210
74586		154,5		ROLL 240 SOFT LINE 240 270 CLASSIC 240 270
74587		174,5		CLASSIC 320 360 SOFT LINE 320

Code	Colour	Length (cm)	Diameter (mm)	Compatible with
50992	Grey	140	35	ELITE 220 250 270
50994		150		TOP LINE 280 320 360

Actual product markings and colours may differ slightly from the pictures.

SPARE PARTS & ACCESSORIES



Inflating Valve

Code	Colour	Compatible with
98788	Black	ROLL 185 210 240 SOFT LINE 210 240 270 320
98966	Grey	CLASSIC 240 270 320 360 HERCULES II 250 300 350

Code	Colour	Compatible with
500868	Black	ELITE 220 250 270
500867	Grey	TOP LINE 280 320 360

Key for Valves

Code	Compatible with
98789	ROLL 185 210 240 SOFT LINE 210 240 270 320 CLASSIC 240 270 320 360 HERCULES II 250 300 350



Repair Kit for Inflatable Boats

Code
74705

It includes:

- PVC fabric, 2 pcs (150 x 200 mm grey & 150 x 200 mm white)
- Neoprene fabric, 1 pc (150 x 200 mm black)
- Glue tube 20 gr
- Key for valves



HERCULES Repair kit for TPU/PVC/EVA fabrics

Code	Application for	It includes:
72436	<ul style="list-style-type: none"> • Liferafts • Tender boats • Inflatable Fenders • Other TPU, PVC & EVA products 	<ul style="list-style-type: none"> • Cleaner - 30ml • Hardener/Cross linker - 15ml • Glue (PO 40) - 100ml • Fabric (Nylon TPU 10x30cm & PVC 10x30cm) • Brush



HERCULES Repair kit for NEOPRENE/RUBBER fabrics

Code	Application for	It includes:
72437	<ul style="list-style-type: none"> • Liferafts • Tender boats • Fenders • Other neoprene & rubber products 	<ul style="list-style-type: none"> • Cleaner - 30ml • Hardener/Cross linker - 15ml • Primer G.O. - 30ml • Glue (PO 40) - 100ml • Fabric (neoprene polyester 10x30cm) • Brush



Inflating Adaptor for Valves

Code	Compatible with
98970	ROLL 185 210 240 SOFT LINE 210 240 270 320 CLASSIC 240 270 320 360 HERCULES II 250 300 350 ELITE 220 250 270 TOP LINE 280 320 360



Hull Support Kit

Type A Code	Compatible with
500730	ELITE 250 270 TOP LINE 320 360

Type B Code	Compatible with
500731	ELITE 220 TOP LINE 280



Footpump 5lt

Code
50952

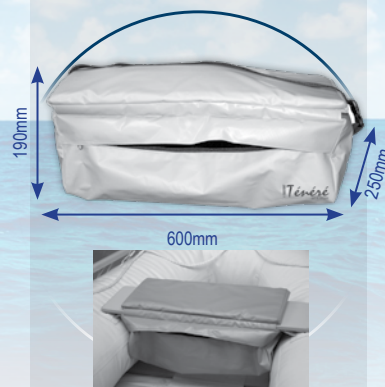
Actual product markings and colours may differ slightly from the pictures.

SPARE PARTS & ACCESSORIES



Boat Cover

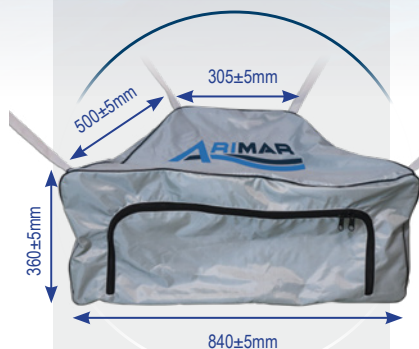
Code	Compatible with
57351	ROLL 240
	SOFT LINE 240 270
	CLASSIC 240 270
	ELITE 250 270
	TOP LINE 280
57324	TOP LINE 320 360
	CLASSIC 320 360
	SOFT LINE 320



Under Seat Storage Bag, Tenere Sit & Store

Code	Colour
70895	Grey

Suitable for all ARIMAR Inflatable Boats



Bow Bag, Grey

Code	Compatible with
501813	ROLL 185 210 240
	SOFT LINE 210 240 270 320
	CLASSIC 240 270 320 360



Console with Cable Steering System

Code	Compatible with
500729	TOP LINE 320 360



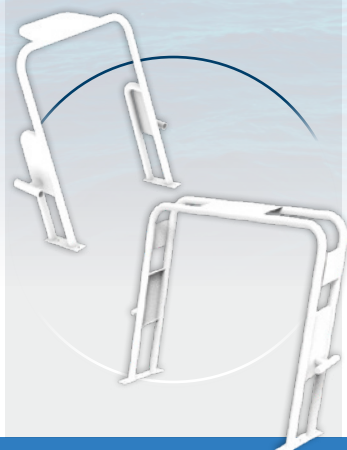
Adjustable Locker / Bench with Cushion

Code	Compatible with
500459	ELITE 250 270
Code	Compatible with
500506	TOP LINE 320 360



End Block, Material PP

Code
198202



Roll bar

Code	Compatible with
502298	SPORT STILE 360
502299	SPORT STILE 460
502300	XCELLENCE 520
502301	XCELLENCE 580



T-Top

Code	Compatible with
502302	XCELLENCE 580

Actual product markings and colours may differ slightly from the pictures.



SUP Inflatable Board

Length 3,2m, with Paddle & Foot Strap

Specifications

- Weight: 10,2 kg
- Pressure: 12-15 psi
- Drop stitch technology - allows the SUP to maintain its shape when it is inflated to high pressure
- Double Layer Fusion technology
- PVC coated fabric
- Volume: 280 L
- Dimensions: 320 x 81.5 x 15 cm

Hydrodynamic & modern design

Maximum Load 200 kg

Removable fins

Code | 501839

Package Includes

Footstrap

Mobile Pouch

Paddle

1 backpack

2 Fins (small size)
1 Fin (big size)

Repair Kit

High Pressure
hand pump with manometer

ARIMAR SUP
Footstrap

Code | 502287

Can be bought separately as spare parts

ARIMAR SUP Paddle
170-210cm

Code | 501843

ARIMAR SUP Fins,
3 pcs

Code | 502286

Actual product markings and colours may differ slightly from the pictures.

ARIMAR

