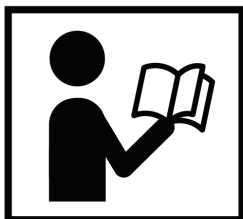


# 3PT PLUG AERATOR (DRUM LAWN AERATOR / 3PT DRUM PLUG AERATOR)



## **⚠ WARNING**



- Please read and understand the product manual completely before assembly
- Check against the parts list to make sure all parts are received
- Wear proper safety goggles or other protective gears while in assembly
- Do not return the product to dealer. They are not equipped to handle your requests.

Missing parts or have questions on assembly?

Please call: 1-877-761-2819 or email: [cs@tmgindustrial.com](mailto:cs@tmgindustrial.com)

# CONTENTS

<b>IMPORTANT SAFETY INFORMATION</b>	<b>3</b>
YOUR SAFETY	3
GENERAL SAFETY	3
EQUIPMENT SAFETY GUIDELINES	3
SAFETY TRAINING	4
SAFETY SIGNS	4
SAFETY DECALS	5
WORK AREA	5
TRANSPORT SAFETY	5
TO THE NEW OPERATOR OR OWNER	5
<b>OPERATION</b>	<b>5</b>
<b>SPECIFICATION</b>	<b>6</b>
SPECIFICATIONS & CAPACITIES	6
PLUG	6
<b>PARTS LIST</b>	<b>6</b>
3-POINT TRACTOR PLUG AERATOR ASSEMBLY	6
PARTS LIST	7

# IMPORTANT SAFETY INFORMATION

## Your Safety

YOU are responsible for the SAFE operation and maintenance of your TMG Tractor Plug Aerator. YOU must ensure that you and anyone else who is going to use, maintain or work around the Tractor Plug Aerator be familiar with the using and maintenance procedures and related SAFETY information contained in this manual. This manual will take you step-by-step through your working day and alerts you to all good safety practices that should be used while using the Tractor Plug Aerator.

Remember, YOU are the key to safety. Good safety practices not only protect you but also the people around you. Make these practices a working part of your safety program. Be certain that EVERYONE using this equipment is familiar with the recommended using and maintenance procedures and follows all the safety precautions. Most accidents can be prevented. Do not risk injury or death by ignoring good safety practices.

1. Tractor Plug Aerator owners must give operating instructions to operators or employees before allowing them to operate the machine, and at least annually thereafter.
2. The most important safety device on this equipment is a SAFE operator. It is the operator's responsibility to read and understand ALL Safety and Operating instructions in the manual and to follow these. Most accidents can be avoided.
3. A person who has not read and understood all using and safety instructions is not qualified to use the machine. An untrained operator exposes himself and bystanders to possible serious injury or death.
4. Do not modify the equipment in any way. Unauthorized modification may impair the function and/or safety and could affect the life of the equipment.
5. Think SAFETY! Work SAFELY!

## General Safety

1. Read and understand the Operator's Manual and all safety signs before using, maintaining, adjusting, or cleaning the Tractor Plug Aerator.
2. Have a first-aid kit available for use should the need arise and know how to use it.
3. Have a fire extinguisher available for use should the need arise and know how to use it.
4. Do not allow riders.
5. Wear appropriate protective gear. This list includes but is not limited to:
  - A hard hat
  - Protective shoes with slip resistant soles
  - Heavy gloves
  - Wet weather gear
  - Hearing Protection
6. Install and secure all guards before starting.
7. Wear suitable ear protection for prolonged exposure to excessive noise.
8. Turn machine off, stop and disable engine, remove ignition key and place in your pocket, set park brake and wait for all moving parts to stop before servicing, adjusting, repairing, or unplugging.
9. Clear the area of people, especially small children, before using the unit.
10. Review safety related items annually with all personnel who will operating or maintaining the Tractor Plug Aerator.



## Equipment Safety Guidelines

1. Safety of the operator and bystanders is one of the main concerns in designing and developing equipment. However, every year many accidents occur which could have been avoided by a few seconds of thought and a more careful approach to handling equipment. You, the operator, can avoid many accidents by observing the following precautions in this section. To avoid personal injury or death, study the following precautions and insist those working with you, or for you to follow them.

2. In order to provide a better view, certain photographs or illustrations in this manual may show an assembly with a safety shield removed. However, equipment should never be used in this condition. Keep all shields in place. If shield removal becomes necessary for repairs, replace the shield prior to use.
3. Replace any safety sign or instruction sign that is not readable or is missing. Location of such safety signs is indicated in this manual.
4. Never use alcoholic beverages or drugs which can hinder alertness or coordination while using this equipment. Consult your doctor about using this machine while taking prescription medications.
5. Under no circumstances should young children be allowed to work with this equipment. Do not allow persons to use or assemble this unit until they have read this manual and have developed a thorough understanding of the safety precautions and of how it works. Review the safety instructions with all users annually.
6. This equipment is dangerous to children and persons unfamiliar with its operation. The operator should be a responsible, properly trained and physically able person familiar with machinery and trained in this equipment's operations. If the elderly are assisting with work, their physical limitations need to be recognized and accommodated.
7. Never exceed the limits of a piece of machinery.
8. If its ability to do a job, or to do so safely, is in question - DON'T TRY IT.
9. Do not modify the equipment in any way. Unauthorized modification may result in serious injury or death and may impair the function and life of the equipment.
10. In addition to the design and configuration of this implement, including Safety Signs and Safety Equipment, hazard control and accident prevention are dependent upon the awareness, concern, prudence, and proper training of personnel involved in the operation, transport, maintenance, and storage of the machine. Refer also to Safety Messages and operation instruction in each of the appropriate sections of the Tractor and machine manuals. Pay close attention to the Safety Signs affixed to the Tractor and the machine.

#### **Safety Training**

1. Safety is a primary concern in the design and manufacture of our products. Unfortunately, our efforts to provide safe equipment can be wiped out by a single careless act of an operator or bystander.
2. In addition to the design and configuration of equipment, hazard control and accident prevention are dependent upon the awareness, concern, prudence, and proper training of personnel involved in the operation, transport, maintenance, and storage of this equipment.
3. It has been said, "The best safety feature is an informed, careful operator." We ask you to be that kind of an operator. It is the operator's responsibility to read and understand ALL Safety and Using instructions in the manual and to follow these. Accidents can be avoided.
4. If this machine is used by any person other than yourself, or is loaned or rented, it is the machine owner's responsibility to make certain that the operator, prior to using:
  - a. Reads and understands the operator's manuals.
  - b. Is instructed in safe and proper use.
5. Know your controls and how to stop the Tractor and machine quickly in an emergency. Read this manual and the one provided with Tractor.
6. Train all new personnel and review instructions frequently with existing workers. Be certain only a properly trained and physically able person will use the machinery. A person who has not read and understood all using and safety instructions is not qualified to use the machine. An untrained operator exposes himself and bystanders to possible serious injury or death. If the elderly is assisting with the work, their physical limitations need to be recognized and accommodated.

#### **Safety Signs**

1. Always keep safety signs clean and legible.
2. Replace safety signs that are missing or have become illegible.
3. Replaced parts that displayed a safety sign should also display the current sign.
4. Safety signs have a part number in the lower righthand corner. Use this part number when ordering replacement parts.

5. Safety signs are available from your authorized Distributor or Dealer Parts Department or the factory.

#### Safety Decals



#### Work Area

Keep work area clean, free of clutter, and well-lit. Cluttered and dark work areas can cause accidents.

Keep children and bystanders away while operating a Plug Aerator. Distractions can cause you to lose control, so visitors should remain at a safe distance from the work area.

Be alert of your surroundings. Using a Plug Aerator in confined work areas may put you dangerously close to sharp tools and rotating parts.

#### Transport Safety

1. Comply with state and local laws governing safety and transporting of machinery on public roads.
2. Check that all the lights, reflectors and other lighting requirements are installed and in good working condition.
3. Do not exceed a safe travel speed. Slow down for rough terrain and cornering.
4. Do not drink and drive.
5. Be a safe and courteous driver. Always yield to oncoming traffic in all situations, including narrow bridges, intersections, etc. Watch for traffic when operating near or crossing roadways.

#### To the New Operator or Owner

Follow all safety instructions exactly. Safety is everyone's business. By following recommended procedures, a safe working environment is provided for the operator, bystanders, and the area around the worksite. Untrained operators are not qualified to operate the machine.

Many features incorporated into this machine are the result of suggestions made by customers like you. Read this manual carefully to learn how to use the chipper safely and how to set it to provide maximum field efficiency. By following the using instructions in conjunction with a good maintenance program, your Tractor Plug Aerator will provide many years of trouble-free service.

## OPERATION

Connect the aerator to the category 1 or 2 tractor. Lift the aerator. Remove the pins (#6) from the support legs (#8), raise the support legs, and insert pins (#6) back in the raised legs during aerator use.

## MAINTENANCE

Do not modify the Plug Aerator in any way. Unauthorized modification may impair the function and/or safety and could affect the life of the equipment. There are specific applications for which the Plug Aerator was designed.

Always check for damaged or worn-out parts before using the Plug Aerator. Broken parts will affect the Plug Aerator's operation. Replace or repair damaged or worn parts immediately.

Do not exceed the Plug Aerator load capacity.

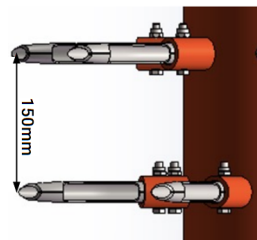
Distribute the load evenly. Uneven loads may cause the Plug Aerator to tip, resulting in personal injury to the operator or others.

Use the Plug Aerator on flat and level surfaces capable of supporting the Plug Aerator and its maximum load. Pulling or pushing a load on a slanted or uneven surface can result in loss of control.

Store idle Plug Aerator. When Plug Aerator is not in use, store it in a secure place out of the reach of children. Inspect it for good working condition prior to storage and before re-use.

## Plug

Replaceable 5 \*1" coring plugs



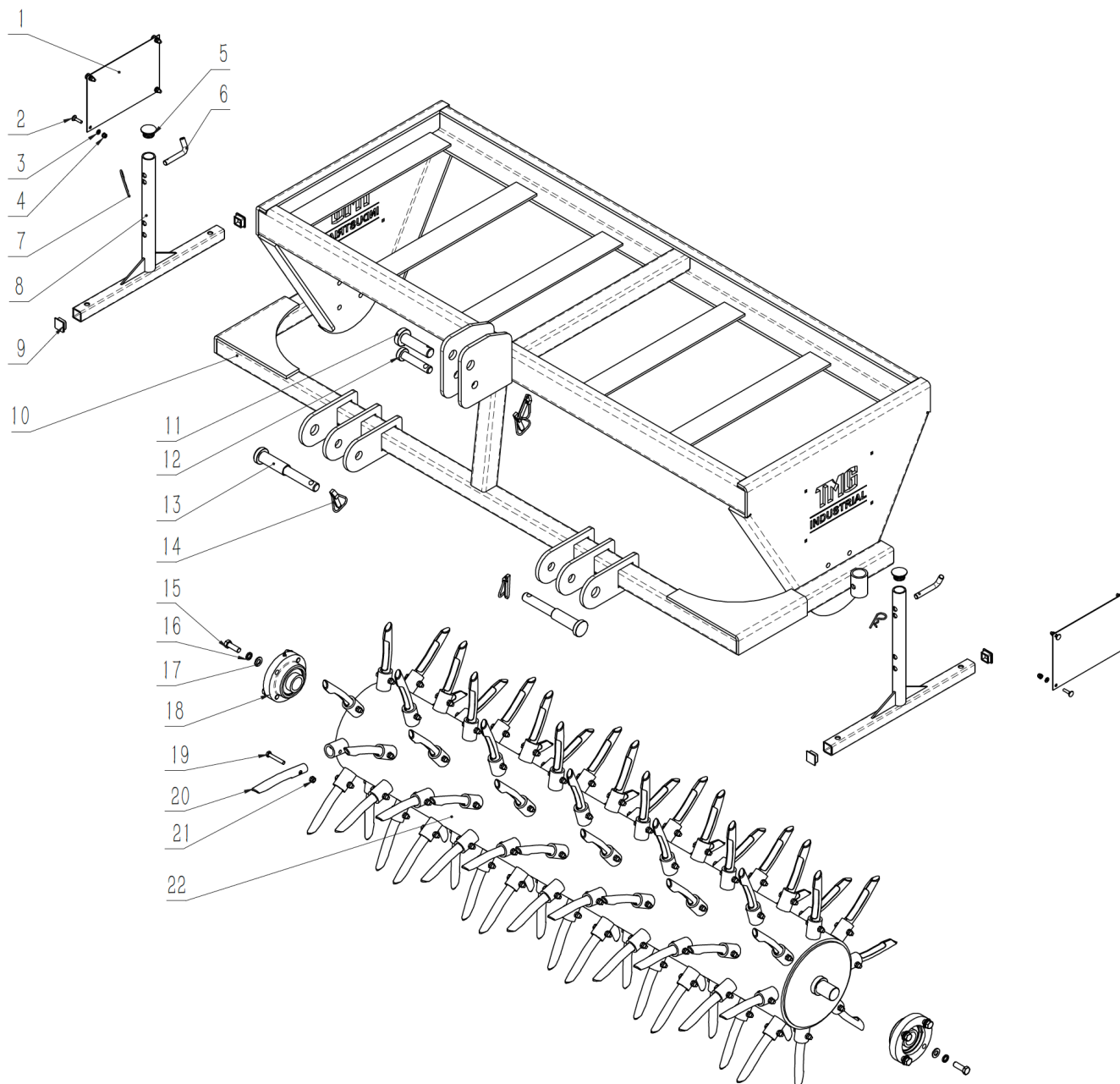
# SPECIFICATION

## Specifications & Capacities

	TMG-TLA50	TMG-TLA60
Overall size	64"(L) x 34"(W) x 34"(H)	88"(L) x 56"(W) x 40"(H)
Working Width	50"	60"
Plug Count	72	88
N.W.	323 kg	365 kg
G.W.	373 kg	425 kg

# PARTS LIST

## 3-point Tractor Plug Aerator Assembly



**Parts List**

Part No.	Ref.	Part Description	TLA50	TLA60
1	DLA60.5TMG	Logo Cover	2	2
2	GB/T 801-1998	Round Head Bolt M6 * 25	8	8
3	GB/T 97.1	Plain Washer 6	8	8
4	GB/T 889.1	Nut M6	8	8
5	W-08-Y26	Round Cover	2	2
6	EFGC175.37	Support Foot Pin	2	2
7	EFGC125.110	R Pin 3.2	2	2
8	DLA50.4B	Supporting Weldment	2	2
9	W-08-F30	Square Cover	4	4
10	DLA50.3TMG	Frame Weldment	1	0
	DLA60.3TMG	Frame Weldment	0	1
11	VBM140.109	Upper Pin 01	1	1
12	NCM175.17	Upper Pin 02	1	1
13	TLL5.2	Lower Pin	2	2
14	B-G043290-10	Lock Pin $\phi$ 10	4	4
15	GB/T 5783	Bolt M12*35	8	8
16	GB/T 93	Spring Washer 12	8	8
17	GB/T 97.1	Plain Washer 12	8	8
18	EFGC175.25B	Flange Uc207	2	2
18.1	EFGC125.115A	Roller Bearing Seat	1	1
18.2	UC207-Z	Bearing UC207	1	1
18.3	JB/T 7940.1	Oil Cup M6 $\times$ 1	1	1
19	GB/T 5783	Bolt M8*50	72	88
20	DLA50.2	Spoon Plug	72	88
21	GB/T 889.1	Lock Nut M8	72	88
22	DLA50.1	Roller Weldment	1	0
	DLA60.1	Roller Weldment	0	1