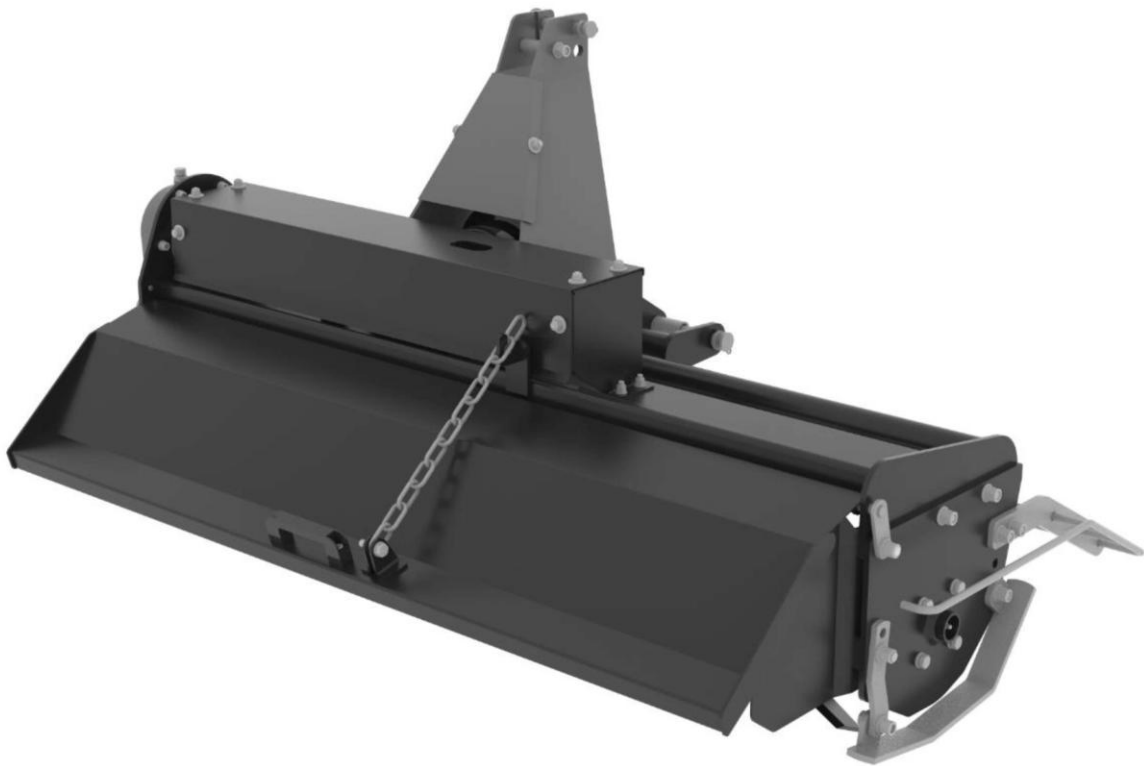


48" TRACTOR ROTARY TILLER

3-PTO Driveline Shaft Included



⚠ WARNING



- Please read and understand the product manual completely before assembly
- Check against the parts list to make sure all parts are received
- Wear proper safety goggles or other protective gears while in assembly
- Do not return the product to dealer. They are not equipped to handle your requests.

Missing parts or have questions on assembly?

Please call: 1-877-761-2819 or email: cs@tmgindustrial.com

TABLE OF CONTENTS

TECHNICAL PARAMETER	2
GUARANTEE	2
HAND-OPERATING MILLING CUTTERS	2
SAFETY & PREVENTIVE STEPS FOR ACCIDENT	3
OPERATION & TRAVEL.....	4
TENSILITY OF CHAIN	4
TRANSMISSION	4
CUTTING TOOL REPLACING	5
INFORMATION SYMBOLS	5
PARTS DRAWING	6
PARTS LIST	7

TECHNICAL PARAMETER

Model	TMG-PT120
Working Width(cm)	120
Blades shaft speed (rpm)	210
Number of blades	28
Tilling depth (cm)	8-12
Fitted power	18-22
Net weight (kg)	168
Gross weight (kg)	200

GUARANTEE

Materials made by us have guaranteed that no defects are on the materials themselves or that there is no blemish during manufacturing. This guarantee will have no effect after the expiry.

Exception conditions:

- (1) It is unworkable due to damaging (lack of care or maintenance), abnormal operations, overused or abnormal abrasion.
- (2) Material is changed, fitting or dismount, even if only perceivable part or surface.
- (3) Our technical service is only available for defective parts. The parts with possible defects should be returned to our company with an attached Demand of Requirements. We are not responsible for the laboring fees of any dismount or installation of the fee and result for handling with the materials.
- (4) To enjoy your guarantee rights, clients should let us know the material limitation and offer all evidences. Under such condition, if the material is not returned, or client appoints a third side to disassemble or repair in advance, the guarantee terms will not work.
- (5) Work pieces always go wrong and after accepting our technical service guarantee the work pieces are not returned to us.
- (6) Our obligation is limited in the range of the above written guarantee terms. In no case a concurrent affair caused by anyone or things can be guaranteed. So do the sold products.
- (7) Property Retaining: According to the term 20.335 of the rules of May 12.1980, we will retain the property ownership of the sold products until all charge is paid.
- (8) Disagreement: If disagreement appears, a court with a certain lever has right for judgment.
- (9) Treaty or statute can't be changed. Adjudication cannot be violated.

HAND-OPERATING MILLING CUTTERS

Seeing this symbol means possible danger to you, so please pay enough attention to this symbol.

SAFETY & PREVENTIVE STEPS FOR ACCIDENT

During operation, you should always remind yourself to be careful to maintain and replace parts and to obey rules to avoid accident.



To operate the machine in a better way, please follow safety rules including these:



(1) Stop tractor, waiting all moving parts to stop. Stop the machine vertically on ground. Lift universal shaft and then begin adjusting, washing or maintenance.

(2) Before using, adjust the elasticity of nuts and bolts, especially adjust blade well.



(3) After operation is finished, cardan shaft should still get care and kept in good condition. Replace the old one if necessary.



(4) Before and during operation, all people must leave the field, because some small clod can be cashed out.

(5) Choose the tractors with protective booth if you can.

(6) Don't let machine operate without human control.



(7) When you maintain, repair or keep the key of tractor, keep the machine from moving forward.

(8) Don't wear tights to avoid being rolled. Wear glove when cutting parts.



(9) Don't let anybody seat on implements and tractor.

(10) Cardan shaft should always be kept in good condition. Fit a small chain to make it easy for stopping rotation. Once default or abrasion is found, the part should be replaced.

To get part under guarantee, use original parts and follow the instructions well.

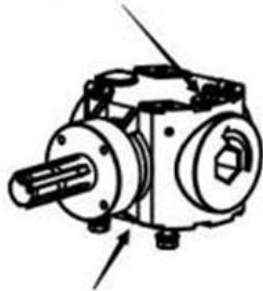
OPERATION & TRAVEL

1. Before using, look through Operation Manual. Keep center bonnet and side cover level and fill with engine oil. Add 0.5-0.6 liters of oil to the

Add (0.8L-0.9L) gear oil to the gearbox

Add (1.5L-1.6L) gear oil to the side gearbox

Cap for inlet gearbox oil

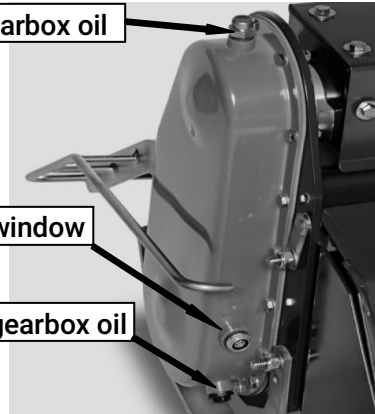


Plug for discharge gearbox oil

Cap for inlet gearbox oil

Oil level window

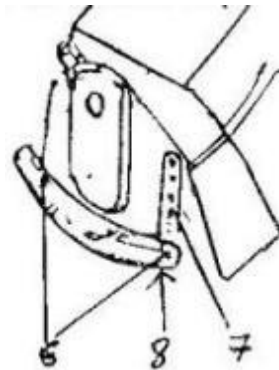
Plug for discharge gearbox oil



2. After 30 work hours, screw out plug and break out bonnets and engine cases before a second operation. Control oil level with meter and break out again after 200 work hours.
3. Before operation, tractor should have the right output power of 540rpm to avoid damaging machine.
4. Operation speed is better to be 1.2-1.5 km/h.

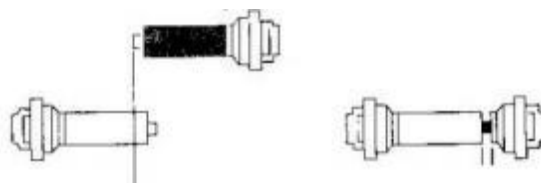
TENSILITY OF CHAIN

1. Tensility of chain is caused by elasticity inside bonnet. If the machine has noise or works for successive 200 hours, adjust elasticity and chain. Adjust parts and components in special workshop. Install bonnet with new fastening. This maintenance can keep chain and machine bolts in good condition.
2. Adjust operation depth. Stop engine of tractor. After the parts and components stop working, loose bolt(6), screw down bolt(7), adjust left and right braking blocks of adjuster(8), and tighten loosen bolts for a proper height.



TRANSMISSION

1. When milling cutter is fixed on tractor, adjust length of cardan shaft. If it is so long that it cuts the outside protective device, file the bushing short. In a working positing, bushing should be inset into the other bushing at least 150mmm (see the picture).

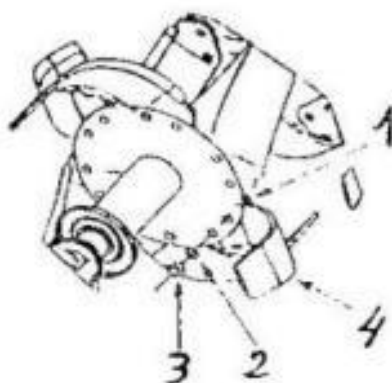


When cutting tool is fixed on tractor, it should get some adjustment.

2. Adjust and install transmission gear (cardan shaft) in special workshop. If there is damage on protective gear, replace it completely. Generally, a chain should be fitted on protective device not only under working condition.
3. When an implement is fitted on tractor, always use pins to lock the crankshaft. If pins go wrong, replace them.
4. When implements are locked on tractor, cardan shaft should be fixed and lock on both ends through pins. The protective device of cardan should be in good condition and kept still during machine running. When safety device is damaged. For safety, use a small chain that is ready to replace it.
5. When machine stops work, let tractor come away from hook. To avoid stopping on the ground, an extra chain of cardan shaft can be used. When fix cardan shaft, make sure it is locked up.

CUTTING TOOL REPLACING

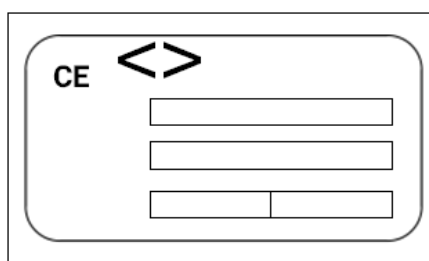
1. Before changing operation of the implement, stop engine of tractor, and after all moving parts and components stops, disconnect cardan shaft with force.
2. Stop the implement on a plain ground and do as the following: screw down all the bolts(1), replace used or damaged cutting tools, install left and right(4) carefully, tighten bolts(1) with shim(2) and nut (3), and tighten bolt(1)



3. For good performance of implement, use original cutting tools only.

INFORMATION SYMBOLS

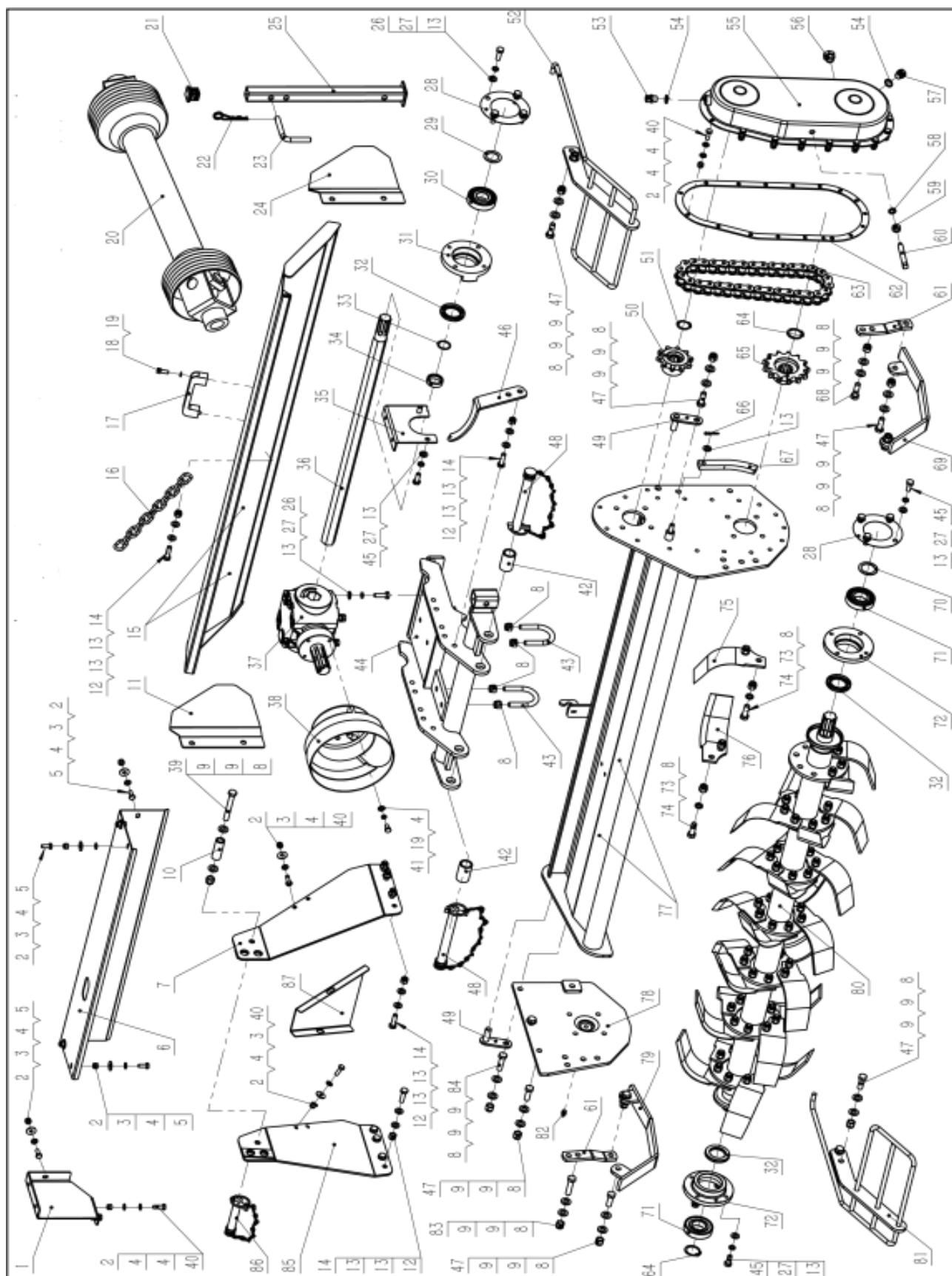
1. Label No. 1 means the model.
2. To transport easily, machine can be delivered without engine oil.



3. Read Operation Instruction carefully before using.
4. Output power is 540rpm.
5. Pay attention to the small clods casted out. Frequent inspection for the working parts and components is necessary.
6. Don't interfere the working machine by compelling and keep yourself away from it.



PARTS DRAWING



PARTS LIST

No.	Specification	Q'ty	No.	Specification	Q'ty
1	Protective Cover	1	24	Back Baffle Left Supporting Plate	1
2	Nuts M8	27	25	Supporting Foot Welding	1
3	Washer 8	8	26	Bolts M10X30	8
4	Washer 8	50	27	Spring Washer 10	18
5	Bolts M8x20	6	28	Paper Washer	2
6	Protective Cover	1	29	Upper Chain Washer	1
7	Hitch Left Welding	1	30	Bearing	1
8	Nuts M12	56	31	Bearing Seat	1
9	Washer 12	30	32	Oil Seal 40x62x8	3
10	Hitch Spacer	1	33	O rubber seal	1
11	Back baffle right supporting plate	1	34	Oil-proof Spacer	1
12	Bolts M10	10	35	Protective cover	1
13	Washer 10	39	36	Transmission Shaft	1
14	Bolts M10x35	30	37	Gearbox	1
15	Back Cover Welding	1	38	PTO Cover	1
16	Back Cover Chain	1	39	Bolts M12X90	1
17	Plastic Handle	1	40	Bolts M8X25	29
18	Bolts M8X20	2	41	Bolts M8X16	4
19	Spring Washer 8	6	42	Pipe Sleeve	2
20	PTO 04B800	1	43	U Shape Bolts M12X48	2
21	Square Pipe Plug	1	44	Gearbox Seat Welding	1
22	R Pin 3	1	45	Bolts M10X25	10
23	Supprting Foot Pin	1	46	PTO Hanging Board	1

No.	Specification	Q'ty	No.	Specification	Q'ty
47	Bolts M12x25	11	68	Bolts M12X40	1
48	Lower Hitch Pin	2	69	Pad Welding Left	1
49	Baffle Shaft Welding	2	70	Washer	1
50	Small Chain Wheel	1	71	Bearing 6207-RZ	2
51	Shaft Spring Washer 30	1	72	Blade Shaft Bearing	2
52	Left Guard Rail Welding	1	73	Washer	56
53	Vent Plug M16x1.5	2	74	Bolts M12X35	56
54	Combined Washer Ø16	1	75	Left Blade	14
55	Chain Cover Welding	1	76	Right Blade	14
56	Monitor M18X1.5	1	77	Frame Welding	1
57	Bolts M16x1.5	1	78	Blade Shaft Right Plate Welding	1
58	Combined Washer Ø12	1	79	Pad Welding Right	1
59	Nuts M12	1	80	Blade Shaft Welding	1
60	Bolts M12X80	1	81	Right Guard Rail Welding	1
61	Pad Connection Plate	2	82	Oil Cup M10X1	1
62	Soft Wooden Pad	1	83	Bolts M12X50	1
63	Chain	1	84	Bolts M12X45	1
64	Circlip Ø35	2	85	Hitch Left Welding	1
65	Big Chain Wheel	1	86	Upper Hitch Pin	1
66	Pin Ø4×25	1	87	Back Plate	1
67	Tension Plate	1			