

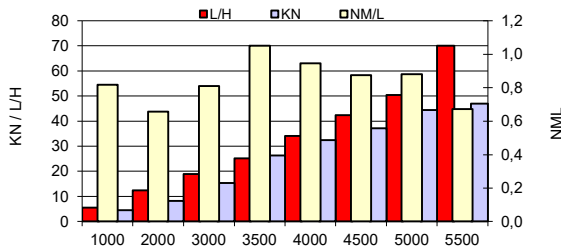
TEST CONDITIONS

Test Date	04.06.2021
Test Conductor	GF - KT
Boat Weight as Tested (kg)	
Air Temperature (degrees C)	22
Elevation (m)	0
Sea State (calm / smooth / slight / moderate)	Calm
Wind Velocity range (kn)	1
Fresh/Salt Water	Salt
Fuel Level at Testing (l)	65 %

PERFORMANCE SUMMARY

Top Speed (kn @ rpm)	50,5@6050
Acceleration 0 - 20 kn (seconds)	3,7
Acceleration 0 - 30 kn (seconds)	5,6
Best Fuel Economy (nm/l @ rpm)	1,1 @ 3500

PERFORMANCE CURVE



PERFORMANCE DATA

RPM	SPEED	FUEL CONSUMPTION		RANGE	FUEL CONSUMPTION
		L/H	NM/L		
1000	4,5	5,5	0,8	160,0	1,2
2000	8,2	12,5	0,7	140,0	1,5
3000	15,4	19	0,8	160,0	1,2
3500	26,4	25,1	1,1	220,0	1,0
4000	32,4	34,2	0,9	180,0	1,1
4500	37,2	42,5	0,9	180,0	1,1
5000	44,5	50,5	0,9	180,0	1,1
5500	47	70	0,7	140,0	1,5
6050	50,5	86	0,6	120,0	1,7
Top RPM	50,5	86	0,6	120,0	1,7

ENGINE SPECIFICATIONS

Number of Engines	1
Engine	225 Pro XS
Horsepower	225
Cylinders	V8
Drive or gear model and ratio	1,75
Engine Length (in)	25"

BOAT SPECIFICATIONS

Region/s sold	Norway
Manufacturer	Zodiac
Website	http://www.zodiac-rafts.com/en/boats/boats/open-air/open-air-6-8/
Boat Model	Medline 6.8
Boat Type	Inflatable - Rigid Hull (RIB)
Material	Fiberglass
Length (m)	6,88
Beam (m)	2,54
Max hp Capacity	250
Fuel Tank Capacity (l)	200
Steering Type	Hydr
Dry Boat Weight (kg)	950
Mounting Bolt Hole (outboard)	4

PROPELLER SPECIFICATIONS

Part Number	
Part Number	
Part Number	
Part Number	8M0151381
Mercury Name	Tempest Plus
Material	SS
Diameter/Pitch	14 5/8 X 19"
Number of Blades	3
Active trim profile	2



MERCURY MARINE PO BOX 1939 FOND DU LAC, WISCONSIN 54936-1939

©2015 Mercury Marine, All Rights Reserved. Results on individual boats may vary depending on many factors.

800-MERCURY MERCURYMARINE.COM

Boatbuilder authorize Mercury to publish the BHB on Mercury WEB site: Y