



### STANDARD FEATURES

<b>COUPLER:</b>	Adjustable Flat Mount Pintle
<b>SAFETY CHAINS:</b>	5/16" Grade 70 w/Grab Hooks
<b>DECK HEIGHT:</b>	36"
<b>DECK WIDTH:</b>	102" ID
<b>AXLES:</b>	3 - 7,000Lb Electric Brakes
<b>SUSPENSION:</b>	Leaf Springs w/Equalizers
<b>TIRES:</b>	ST235/80R16 Radial 8 Ply
<b>MAIN FRAME:</b>	12@16 WF Beam
<b>POCKETS:</b>	Preformed 3/16" c/w Full Length 1/4" Rub Rail
<b>CROSS-MEMBERS:</b>	Channel - 3" on 16" Centers
<b>LIGHTS:</b>	LED, Rubber Mounted
<b>DECKING:</b>	Douglas Fir, Heat Treated
<b>JACK:</b>	2 - 12,000Lb Jack
<b>FINISH:</b>	Steel Grit Blasted to Bare Metal, Prime, Paint w/PPG Urethane Coatings
<b>FINISH:</b>	High Impact Surfaces Coated with Polyurea (High Tensile Strength Bed liner)

**MODEL: HB218**  
**21,000LB - 24,000LB**  
**GVW**

#### Available Sizes:

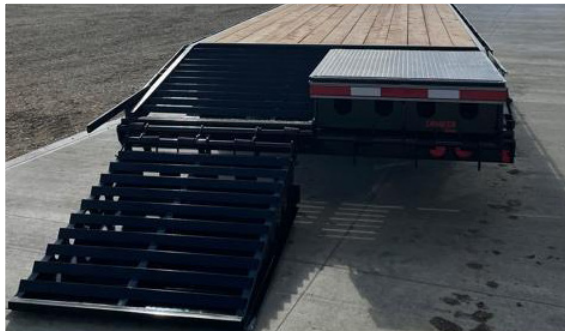
- 8' x 16'
- 8' x 18'
- 8' x 20'
- 8' x 22'
- 8' x 24'
- 8' x 26'
- 8' x 28'
- 8' x 30'
- 8' x 32'
- 8' x 34'
- 8' x 36'

### POPULAR OPTIONS

- Conqur ramps-full width spring assisted
- 36" Side toolbox

**SEE DEALER FOR COMPLETE LIST OF AVAILABLE OPTIONS**





### WHEEL OPTIONS

SUBJECT TO AVAILABILITY



BLACK  
STANDARD



WHITE  
STANDARD



ALUMINUM  
UPGRADE

### STANDARD COLOUR



BLACK

### AVAILABLE COLOURS



DOUBLE A RED



CATERPILLAR  
YELLOW



CHARCOAL GREY



SAND DUNE TAN



ROYAL BLUE



RANGER GREEN



ENVIRO GREEN



HAZARD ORANGE



INDUSTRIAL GREEN

