

BRINKLEY

MID-SIZED LUXURY FIFTH WHEELS

MODEL Z 3610

The All-New Brinkley Model Z – Mid-Sized Luxury Fifth Wheel is in a class of its own... Featuring an automotive exterior with a residential interior, yielding NO COMPROMISE. It's destined to change the RV ownership experience. Whether you're a weekend camper or a full-time RVer, Model Z offers features and amenities that will appeal to all camping enthusiasts. From 8k axles, 17.5" H-rated Cooper tires, flush floor slides, and a class-leading 79.5" bed & bath interior height, to name a few. The Model Z has a combination of high-end features unheard of on a Mid-Size Fifth Wheel.

- ✓ **RESIDENTIAL INTERIOR: CONTEMPORARY & REFINED**
- ✓ **AUTOMOTIVE EXTERIOR: MODERN CLEAN STYLING & WINDOWS**
- ✓ **MAXIMUM EXTERIOR STORAGE: OVER 100 CUBIC FEET**
- ✓ **101+ INTELLIGENT FEATURES: DEVELOPED & TESTED IN THE REAL WORLD**



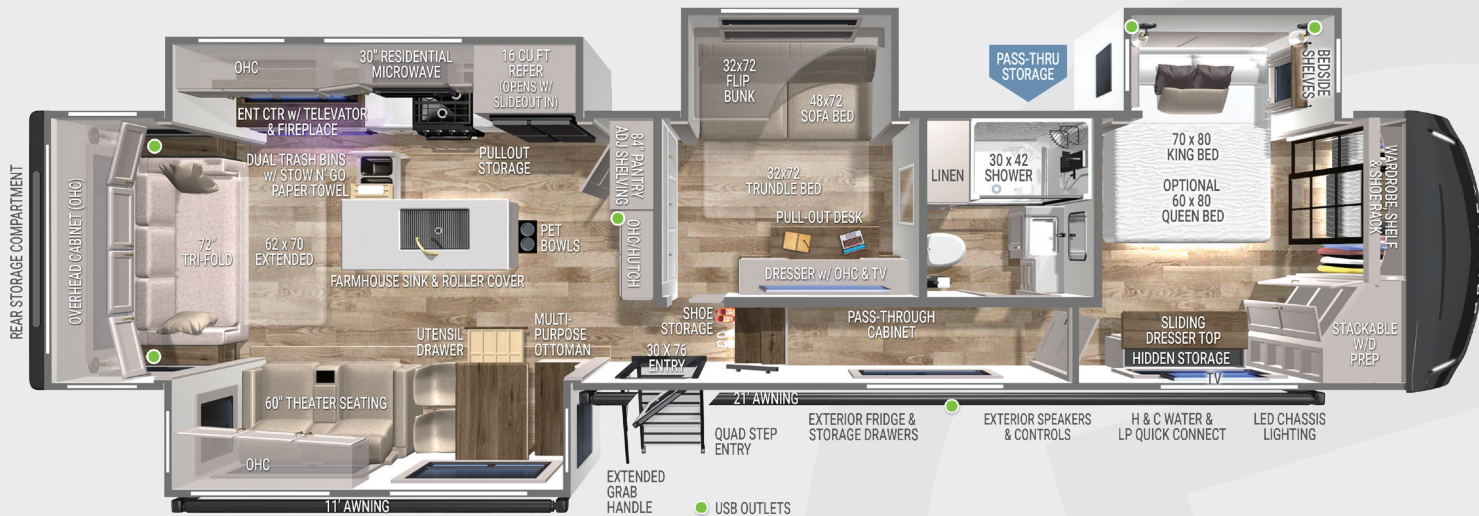
Z 3100 Exterior Shown



Aftermarket Bedding Shown

MODEL Z 3610

SPECS & FEATURES



SPECIFICATIONS:

- UVW – 14,695
- GVWR – 17,695
- Hitch Weight – 2,591
- Exterior Length – 41' 9"
- Overall Height with ACs – 13' 4"
- Width – 96"
- Bath & Bedroom Height - 79 ½"
- Slide Height - 76"
- Wheels & Tires – 17.5" H-Rated (16 ply)
- Fresh Water Capacity – 75 gal
- Gray Water Capacity – 90 gal (True)
- Black Water Capacity – 45 gal
- Insulation – Floors R40, Walls R11, Ceiling R40

FEATURES:

- Dual Pull-Out Trash Bins w/ Integrated Stow N' Go Paper Towel Holder
- Wide Stance 6-Point Leveling Jacks & Oversized Front Storage
- Residential Square Frameless Windows w/ 6" Opening
- Electronic Dump Valves w/ Manual-Override
- Kitchen & Living Room/Dining Room Flush Floor Slides
- Automotive Grade Front Cap, Lights, & Lens
- 84" Pantry w/ Adjustable Shelves & Appliance Outlet
- 24+ outlets and 6 outlets w/ USB & USB-C
- Basement Utility Access w/ Sliding Doors & Motion Lights
- Pull-Out Storage for 'Stewy' w/ Removable Pet Bowls
- 370W Solar Panel w/ 50AMP MPPT Controller (Inverter Prep & Lithium Ready)
- 2 - Hot/Cold Outdoor Shower (BOTH sides of coach)
- Large Exterior Storage Compartments w/ Tough Ply Liner
- Rear Storage Compartment (48"x40"x15")
- Brinkley CraftSense™ Wood Trim Construction

- Premium Residential Cabinets & Drawers w/ Dovetail Joints
- Residential End Tables w/ Flip-Up Charging Station & Storage
- Bedside Shelves & Outlets w/ USB & USB-C
- Hidden Sliding Dresser Top Storage Compartment
- Built-in Wire Conduit from Roof to Basement
- Oversized Quad Tip-To-Clean Entry Steps
- Brass Plumbing Connections (Industry First)
- Low Maintenance Roof (Industry First)
- Heavy-Duty 8k lbs. Axles with 8k lbs. Leaf Springs
- Exterior Refrigerator & Storage Drawers w/ Work Surface
- 13.5k Front AC + Furrion 18k Chill® Cube Rear AC

Bonus Room Highlights:

- Sofa Bed (48"x72")
- Trundle Bed (32"x72")
- Overhead Flip Bunk (32"x72")
- Dresser w/ 50" Smart TV & Pull-Out Desk (27"x41.5")

FACTORY OPTIONS:

- Dual Pane Windows \$1,586
- Queen Bed w/ Nightstands \$428
- 13.5k Mid Bonus Room AC (Mandatory)

MSRP:

BASE MSRP	\$109,607
Mandatory Packages	\$10,851
STANDARD RUN MSRP (King Bed)	\$120,458

092823

Based on pre-production prototype. All preliminary info & content is subject to change without notice. Please consult with your dealer for current production model details & information.



For More Information, Photos, & Videos,
& Why Brinkley go to BrinkleyRV.com

