



HIGHFIELD
aluminium boats



dare to explore
2022 range



ROLL-UP RANGE

These great “stow-and-go” dinghies are perfect when space is limited. Available with inflatable or sectional aluminum floor, all models come with a powder coated aluminum transom which won’t delaminate like traditional plywood transoms. Davit lifting points are built in, and a cup holder is built in to the seat. Bimini top available as an option.

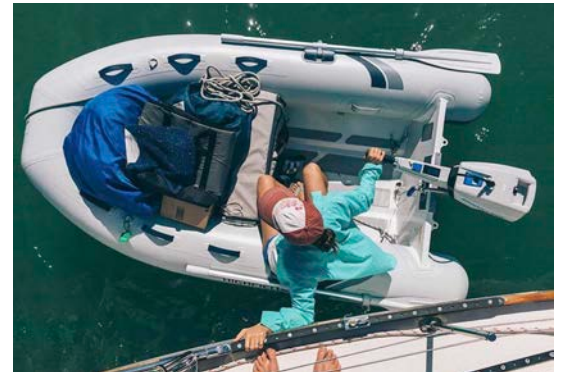


KAM 280

| Model | Length | Beam | Inside Length | Inside Beam | Weight | Max People | Max Payload | Max HP | Transom | Chambers | Tube Dia | Flooring |
|---------|--------|-------|---------------|-------------|---------|------------|-------------|--------|---------|----------|----------|----------|
| KAM 200 | 6' 7" | 4' 6" | 4' 2" | 2' 0" | 53 lbs | 2 | 551 lbs | 3.5 hp | Short | 3 | 14" | air deck |
| KAM 230 | 7' 7" | 4' 6" | 5' 1" | 2' 0" | 57 lbs | 2 | 772 lbs | 4 hp | Short | 3 | 14" | air deck |
| KAM 250 | 8' 2" | 5' 3" | 5' 4" | 2' 4" | 66 lbs | 3 | 992 lbs | 6 hp | Short | 3 | 17" | air deck |
| KAM 280 | 9' 2" | 5' 3" | 6' 4" | 2' 4" | 73 lbs | 4 | 1102 lbs | 10 hp | Short | 3 | 17" | air deck |
| KAM 320 | 10' 6" | 5' 1" | 7' 6" | 2' 4" | 79 lbs | 4 + 1 | 1246 lbs | 15 hp | Short | 3 | 17" | air deck |
| AL 200 | 6' 6" | 4' 7" | 4' 2" | 2' 0" | 62 lbs | 2 | 551 lbs | 3.5 hp | Short | 3 | 14" | alum |
| AL 230 | 7' 7" | 4' 7" | 5' 2" | 2' 0" | 68 lbs | 2 | 772 lbs | 4 hp | Short | 3 | 14" | alum |
| AL 250 | 8' 3" | 5' 2" | 5' 5" | 2' 4" | 82 lbs | 3 | 992 lbs | 6 hp | Short | 3 | 17" | alum |
| AL 280 | 9' 2" | 5' 3" | 6' 4" | 2' 4" | 93 lbs | 4 | 1102 lbs | 10 hp | Short | 3 | 17" | alum |
| AL 320 | 10' 6" | 5' 3" | 7' 8" | 2' 4" | 106 lbs | 4+1 | 1246 lbs | 15 hp | Short | 3 | 17" | alum |

ULTRALITE RANGE

As the name suggests, the Ultralites’ low weight make them a real alternative for those who want the weight of a collapsible boat but the performance of a rigid hull. 2.5mm powder coated aluminum hull is matched with large tube diameters, with the option of either welded Mehler® PVC tubes or Orca® Hypalon material. A fuel tank shelf/step in the bow allows a 3 gallon tank to be strapped forward, and the boats come with full non-slip deck throughout.



UL 260



UL 310

| Model | Length | Beam | Inside Length | Inside Beam | Weight | Max People | Max Payload | Max HP | Transom | Chambers | Tube Dia | Deadrise |
|------------|--------|-------|---------------|-------------|---------|------------|-------------|--------|---------|----------|----------|----------|
| UL220 SS* | 7' 3" | 5' 0" | 4' 9" | 2' 6" | 65 lbs | 3 | 653 lbs | 5 hp | Short | 3 | 15" | 10.5° |
| UL240 SS | 7' 10" | 5' 1" | 5' 4" | 2' 7" | 72 lbs | 3 | 653 lbs | 6 hp | Short | 3 | 15" | 10.5° |
| UL260 SS | 8' 6" | 5' 1" | 6' 0" | 2' 6" | 77 lbs | 3+1 | 750 lbs | 6 hp | Short | 3 | 15" | 10.5° |
| UL290 SS | 9' 6" | 5' 1" | 7' 0" | 2' 6" | 86 lbs | 4 | 827 lbs | 10 hp | Short | 3 | 15" | 15° |
| UL 240 LT† | 7' 10" | 5' 6" | 5' 3" | 2' 7" | 74 lbs | 3 | 653 lbs | 6 hp | Short | 3 | 17" | 10.5° |
| UL 260 LT | 8' 7" | 5' 7" | 5' 11" | 2' 7" | 80 lbs | 3+1 | 788 lbs | 10 hp | Short | 3 | 17" | 10.5° |
| UL 290 LT | 9' 5" | 5' 7" | 6' 8" | 2' 7" | 95 lbs | 4 | 882 lbs | 15 hp | Short | 3 | 17" | 15° |
| UL 310 LT | 10' 3" | 5' 7" | 7' 4" | 2' 7" | 110 lbs | 5 | 1290 lbs | 15 hp | Short | 3 | 17" | 15° |
| UL 340 LT | 11' 1" | 5' 7" | 8' 0" | 2' 7" | 117 lbs | 5+1 | 1462 lbs | 20 hp | Short | 3 | 17" | 15° |

* SS = Space Saver design with 15" tube diameter and narrower beam † LT = Large Tube, with 17" tube diameter

CLASSIC RANGE

This range of tenders has been designed to work hard. A durable aluminum hull coupled with a full length keelguard make these ideal for those beach-hopping days. The weight savings of aluminum, compared to equivalent fiberglass RIBs, means you'll enjoy impressive performance with smaller engines, and with a range of sizes, there's a tender for everyone. EVA non-slip deck in grey or brown teak, welded towing eyes, and a large bow locker for fuel tank storage are standard.

Fold-down transom available as option - ask your dealer



CLASSIC 310

CLASSIC 340



| Model | Length | Beam | Inside Length | Inside Beam | Weight | Max People | Max Payload | Max HP | Transom | Chambers | Tube Dia | Deadrise |
|--------|---------|-------|---------------|-------------|---------|------------|-------------|--------|---------|----------|----------|----------|
| CL 260 | 8' 6" | 5' 7" | 5' 9" | 2' 7" | 119 lbs | 3+1 | 794 lbs | 15 hp | Short | 3 | 17" | 10.5° |
| CL 290 | 9' 6" | 5' 7" | 6' 9" | 2' 7" | 130 lbs | 4 | 1058 lbs | 20 hp | Short | 3 | 17" | 15° |
| CL 310 | 10' 2" | 5' 7" | 7' 5" | 2' 7" | 137 lbs | 5 | 1213 lbs | 20 hp | Short | 3 | 17" | 15° |
| CL 340 | 11' 2" | 5' 7" | 8' 1" | 2' 7" | 157 lbs | 6 | 1215 lbs | 25 hp | S or L | 3 | 17" | 15° |
| CL 360 | 11' 10" | 5' 7" | 8' 9" | 2' 7" | 165 lbs | 6 | 1237 lbs | 30 hp | S or L | 3 | 17" | 15° |
| CL 380 | 12' 6" | 5' 7" | 9' 5" | 2' 7" | 183 lbs | 7 | 1404 lbs | 30 hp | S or L | 3 | 17" | 15° |

If you want a simple but capable utility boat or tender, the two largest Classics come outfitted with internal fuel tanks and separate upholstered bench seat with storage. Also included are the SDS console, a full electrical package with navigation lights and automatic bilge pump, and space on the console for installing gauges. A foam EVA teak deck is standard, as on all other Classics, along with an upholstered bow seat. Roll bar is available as a factory-ordered option.



CLASSIC 420

| Model | Length | Beam | Inside Length | Inside Beam | Weight | Max People | Max Payload | Max HP | Transom | Chambers | Tube Dia | Deadrise |
|--------|---------|--------|---------------|-------------|---------|------------|-------------|--------|---------|----------|----------|----------|
| CL 420 | 13' 10" | 6' 11" | 10' 5" | 3' 5" | 552 lbs | 8 | 1814 lbs | 60 hp | Long | 4 | 19" | 20° |
| CL 460 | 15' 1" | 6' 11" | 11' 7" | 3' 5" | 627 lbs | 9 | 2081 lbs | 80 hp | Long | 5 | 19" | 20° |

CLASSIC CONSOLES

Take your Classic RIB to the next level with the addition of the FCT-7 console or the new CLASSIC GT Console package.

Designed to fit the CL 290 thru 380, the FCT-7 console is an all-in-one seating and steering approach, with built-in navigation lights and switches.



CLASSIC 310 with FCT-7

The GT (available for 340-380) replaces the helm arm with a separate fiberglass console and upholstered side seat. Both options have automatic bilge pump and master battery switch, making these excellent options for those wanting comfort and light weight in a capable tender.

GT and FCT-7

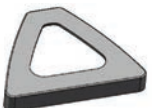


CLASSIC 360 with GT PACKAGE



Classics are available in a range of color schemes, in both Valmex® PVC and Orca® Hypalon tubes.

Overall cover, bimini top, FRP bow step, and bow cushion available as options.



SPORT RANGE



SPORT 300/330/360

The SPORT series feature everything that defines a luxury small tender, designed to deliver maximum performance and comfort with engines in the 20 to 40hp range.

The smallest Sports offer a wide deck, built-in rear seat, quilted diamond upholstery, and low profile console for an unbeatable level of comfort and storage capacity. Also standard are built-in navigation lighting, welded towing eyes, LED convenience lights, and an automatic bilge pump with manual override. Choose from a wide range of colors for the ultimate in a personal sport tender.



SPORT 330

| Model | Length | Beam | Inside Length | Inside Beam | Weight* | Max People | Max Payload | Max HP | Fuel Tank | Transom | Chambers | Tube Dia | Deadrise |
|-----------|---------|-------|---------------|-------------|---------|------------|-------------|--------|-----------|---------|----------|----------|----------|
| SPORT 300 | 9' 10" | 6' 0" | 5' 11" | 2' 9" | 385 lbs | 4 | 1023 lbs | 30 hp | portable | Long | 3 | 17" | 20° |
| SPORT 330 | 11' 0" | 6' 0" | 6' 8" | 2' 11" | 439 lbs | 5 | 1211 lbs | 30 hp | 6.3 gal | Long | 3 | 17" | 20° |
| SPORT 360 | 11' 11" | 6' 0" | 7' 9" | 3' 0" | 473 lbs | 6 | 1398 lbs | 40 hp | 6.3 gal | Long | 3 | 17" | 20° |

* weight includes boat plus console



SPORT 360

SPORT 390/420/460

The mid-size SPORT models combine all the seagoing capabilities of our Patrol range, but with the looks and feel you demand of a family RIB.

Internal fuel tanks on every boat keep your decks clear while the integrated rear bench with huge storage compartment makes carrying your gear for longer passages a breeze.

Brushed EVA teak flooring, internal LED convenience lighting, recessed cleats & high quality upholstery set this range apart from the competition. Roll bars with mounted stern light and sun deck cushions available as options.



SPORT 390 with optional roll bar



SPORT 390

| Model | Length | Beam | Inside Length | Inside Beam | Weight* | Max People | Max Payload | Max HP | Fuel Tank | Transom | Chambers | Tube Dia | Deadrise |
|-----------|---------|--------|---------------|-------------|---------|------------|-------------|--------|-----------|---------|----------|----------|----------|
| SPORT 390 | 12' 10" | 6' 4" | 8' 2" | 3' | 497 lbs | 7 | 1579 lbs | 60 hp | 6.3 gal | Long | 3 | 19" | 20° |
| SPORT 420 | 13' 11" | 6' 9" | 8' 11" | 3' 7" | 681 lbs | 8 | 1744 lbs | 70 hp | 11.6 gal | Long | 4 | 19" | 20° |
| SPORT 460 | 15' 1" | 6' 10" | 9' 7" | 3' 7" | 731 lbs | 9 | 2011 lbs | 90 hp | 11.6 gal | Long | 5 | 19" | 20° |

Sports are available in a range of color schemes, in both Valmex® PVC and Orca® Hypalon tubes.

Stainless steel towing post and upholstered sun decks available as options.



SPORT 520

The SPORT 520's heavy duty 24° deadrise, combined with a 100hp rating and under-deck 28 gallon fuel tank provides a smooth ride in any condition, with three driving positions available, due to the driver side flip-up bolster. There is a wide bow boarding step with roller and cleat for easy anchoring, and lots of room to hang out in the upholstered bow seating area. Add the optional removable ski pole or towing arch for watersports, and take advantage of the huge rear transom area, complete with telescopic boarding ladder. Rated for 10 persons, the Sport 520 has everything you need for a great day on the water.



SPORT 520

| Model | Length | Beam | Inside Length | Inside Beam | Weight | Max People | Max Payload | Max HP | Fuel Tank | Transom | Chambers | Tube Dia | Deadrise |
|-----------|--------|-------|---------------|-------------|----------|------------|-------------|--------|-----------|---------|----------|----------|----------|
| SPORT 520 | 17' 2" | 8' 1" | 11' 3" | 4' 5" | 1136 lbs | 10 | 2332 lbs | 100 hp | 21.6 gal | Long | 6 | 20" | 24° |



SPORT 560

The SPORT 560 changes to a stand-up bolster seating system, with upholstered seating for up to seven as standard equipment. This is designed to handle maximum power, and is available in the usual Sport color range as well as a limited edition Cream & Black build.



SPORT 560

| Model | Length | Beam | Inside Length | Inside Beam | Weight* | Max People | Max Payload | Max HP | Fuel Tank | Transom | Chambers | Tube Dia | Deadrise |
|-----------|--------|-------|---------------|-------------|----------|------------|-------------|--------|-----------|---------|----------|----------|----------|
| SPORT 560 | 18' 7" | 8' 3" | 12' 6" | 4' 5" | 1280 lbs | 12 | 2619 lbs | 115 hp | 21.6 gal | X-Long | 6 | 20" | 24° |

* weight includes boat plus console



SPORT 650/700/800

The largest SPORT models combine the efficiency and high performance of our aluminum hulls with deluxe outfitting, making them the ultimate in large luxury RIB tenders and sportboats.

Built-in seating and large consoles allow for flexibility in instrumentation and layout.

Brushed EVA teak flooring, internal LED convenience lighting, recessed cleats & high quality upholstery set this range apart from the competition. Tow post with mounted stern light and sun deck cushions available as options to give you a range of uses.



SPORT 800

| Model | Length | Beam | Inside Length | Inside Beam | Boat only Weight | Max People | Max Payload | Max HP | Fuel Tank | Transom | Chambers | Tube Dia | Deadrise |
|-----------|---------|-------|---------------|-------------|------------------|------------|-------------|--------|-----------|---------|----------|----------|----------|
| SPORT 650 | 20' 10" | 8' 3" | 14' 3" | 4' 4" | 1726 lbs | 13 | 3011 lbs | 150 hp | 30 gal | X-Long | 6 | 21" | 26° |
| SPORT 700 | 22' 9" | 8' 3" | 16' 2" | 4' 4" | 1973 lbs | 13 | 3011 lbs | 200 hp | 30 gal | X-Long | 6 | 21" | 26° |
| SPORT 800 | 26' 6" | 9' 8" | 17' 6" | 5' 7" | 2535 lbs | 15 | 3500 lbs | 300 hp | 53 gal | X-Long | 6 | 21" | 26° |



SPORT 650



Sport models are available in a range of color schemes, in both Valmex® PVC and Orca® Hypalon. Grey teak is standard, but brown and black teak are also available.



PATROL RANGE



PATROL 460 w/jockey console

The PATROL series offers a range of customizable cockpit layouts, giving you a number of options for what kinds of seating and steering set-up you want, ideal for yacht club chase boats, expedition operators, or private owners looking for the ultimate in a big, powerful RIB.

Options vary by model - please consult the Highfield website along with your dealer to find the exact combination of boat, seating/steering combination, and add-ons like T-tops, roll-bars, and other sporty, useful accessories for you.



PATROL 600



PATROL 660

| Model | Length | Beam | Inside Length | Inside Beam | Boat only Weight | Max People | Max Payload | Max HP | Fuel Tank | Transom | Chambers | Tube Dia | Deadrise |
|--------|---------|--------|---------------|-------------|------------------|------------|-------------|---------|-----------|---------|----------|----------|----------|
| PA 420 | 13' 10" | 6' 11" | 10' 5" | 3' 5" | 556 lbs | 8 | 1814 lbs | 60 hp | 8.4 gal | Long | 4 | 19" | 20° |
| PA 460 | 15' 1" | 6' 11" | 11' 7" | 3' 5" | 631 lbs | 9 | 2081 lbs | 80 hp | 8.4 gal | Long | 5 | 19" | 20° |
| PA 500 | 16' 5" | 7' 6" | 13' 8" | 3' 11" | 972 lbs | 10 | 2317 lbs | 100 hp | 19 gal | Long | 6 | 20" | 24° |
| PA 540 | 17' 9" | 8' 2" | 14' 1" | 4' 4" | 1089 lbs | 12 | 2782 lbs | 115 hp | 22.4 gal | Long | 6 | 20" | 24° |
| PA 600 | 20' 3" | 8' 2" | 14' 4" | 4' 4" | 1530 lbs | 14 | 3214 lbs | 150 hp | 30 gal | X-Long | 6 | 22>>16" | 26° |
| PA 660 | 21' 4" | 8' 6" | 15' 1" | 4' 5" | 1631 lbs | 13 | 2837 lbs | 200 hp | 30 gal | X-Long | 6 | 23>>16" | 26° |
| PA 760 | 25' 0" | 9' 6" | 19' 4" | 5' 7" | 2161 lbs | 12 | 3153 lbs | 300 hp | 60 gal | X-Long | 6 | 23>>16" | 26° |
| PA 860 | 28' 3" | 10' 2" | 20' 8" | 6' 0" | 3069 lbs | 20 | 4643 lbs | 2x300hp | 91 gal | TwinXL | 6 | 23" | 26° |

Specifications on all boats subject to change without notice. Fuel tank capacities are for US-equipped boats, which will vary from Highfield's international specifications.

www.highfi eldnorthamerica.com



Your Local Dealer



Register your Highfield online to activate the extended 5-year warranty for Valmex® PVC material and 10-year coverage for Orca® Hypalon.