



MODEL #AU-24T5400VTB2



*Image for representation only. Options and features may differ.*

## SPECIFICATIONS

CAPACITY (KG/LB)	WHEEL	COUPLER	WIRING HARNES S	BRAKE TYPE	CHAIN (AU- CERT)	BUNK TYPE	AXLES / BRAKES	ATM (KG/LB)	GTM (KG/LB)	TARE MASS (KG/LB)	OVERALL WIDTH (CM/IN)	OVERALL LENGTH (CM/FT IN)
2,449 / 5,400	ST215/R 14C	50mm 3.5 Ton	12 Pin	EOH	13mm	V	2	2,886 / 6,363	2,684 / 5,917	614 / 1,354	248 / 98"	772 / 25' 4"

## STANDARD FEATURES



### Radial Tires

Tow smoother, quieter, and farther with radial tires installed on your trailer. Original equipment on Load Rite Elite 5 STARR models with 13" and larger wheels except skiff and pontoon models. Optional on all pontoon and skiff / jon models. Includes [KENDACARE - LOADSTAR TIRE ROADSIDE ASSISTANCE PROGRAM](#).



### Disc Brakes (Where Installed)

This trailer is equipped with disc brakes (where installed). Load Rite recommends disc brakes on all wheels where available. Disc brakes are self-adjusting and self-cleaning and require minimal maintenance in order to continue to deliver top performance. Follow maintenance tips in your Owners Manual for more detailed instructions.



### Galvanized Steel Frame

Tubular structural steel, fully hot dip galvanized, provides the ultimate finish for any boat trailer. Tubular design shrouds wiring and brake lines from damage. All machining and welding is performed before galvanizing, so there are no surfaces left unprotected from a boat trailer's ultimate enemy: corrosion.



### Balanced Wheels 13" and Larger

CounterAct Wheel Bead Balancing is now included on all 13" and larger wheel assemblies as a standard feature. The wheels dynamically balance during each use. Visit [counteractbalancing.com](http://counteractbalancing.com) for more information.



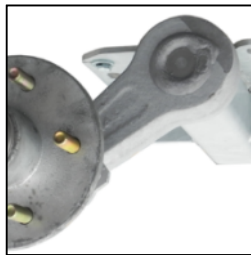
### Tongue Jack

Tongue jacks are standard equipment on all Load Rite Elite models 90" wide and wider except two-place PWC models, all 5 STARR models, and all UT, EQ, and CH models. Appearance and specifications vary by application. Tongue jacks are optional on all other models.



### Adjustable Carpeted Bunks

Traditionally known as V-bunks, this system offers both high strength and a wide range of adjustability. Out of adjustment? There are shorter and taller bolster brackets available in many heights.



### Torsion Axles

Torsion axles provide independent suspension, exceptional rigidity, corrosion resistance, and a far superior ride to any leaf spring suspension. Available on most models.



### Continuous All Wood Bunks

Marine-grade carpeting over wood slab bunks provide solid support without marring the hull during loading and unloading. Initial setup is simplified by this basic design.



### Aluminum Diamond Plate Fenders

A stylish design combined with extreme durability. Standard on all single axle models with 13" and larger wheels.



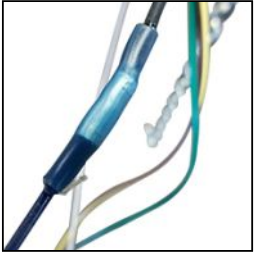
### Carpeted Wood Bunks

Marine-grade carpeted wood bunks provide excellent support without marring the hull during loading and unloading.



### One-piece aluminum fender

Stylish one-piece aluminum diamond-plate fender design is featured on all tandem and triaxle boat trailers.



### Heat-Shrunk Sealed, Concealed Wiring

Standard equipment on all trailers 17' and longer except welded frame models.



### Imprinted Manufacturer's Placard



### AU Spec LED Lighting

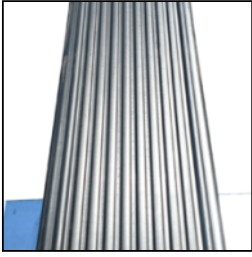


### AU Spec Couplers



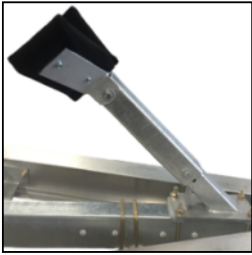
### AU Spec Safety Chains

## OPTIONS



### Plastic Bunk Covers

These multi-purpose covers provide a smooth surface to help the boat or pontoon to slide easier when launching and loading. They also offer an insulating barrier to help prevent corrosion for metallic hulled craft. Protect your aluminum hull. ***Highly recommended for metal-hulled boats and pontoon applications.***



### Independent Bow Stop

Adjustable, galvanized steel, Independent Bow Stop Assembly. Telescopic post, 2x6? wooden carpeted wedge pivots to adapt to bow angle. Mounts to the tongue. Useful as a forward stop for boats with a high bow, bow pulpit or windlass that could interfere with normal winchstand operation.



### Stainless Steel Disc Brakes

Optional stainless steel brakes available for *most* 14", 15" and 16" wheel applications. Can be used with surge and electric over hydraulic actuators.\* *May require optional axle installation. Check with your local dealer before ordering.*



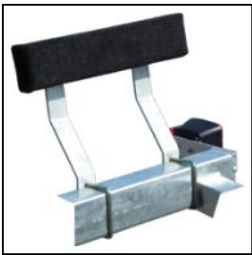
### Spare Tire and Carrier

The most important option to consider, every trailer should have a spare tire readily available. Consult dealer for recommended bracket for individual application.



### Swing Tongue

Applications are limited by trailer capacity and tongue length. Not available on models exceeding 6,000 lbs. capacity. Consult with a dealer.



### Carpeted Side Guides

Standard on most skiff and jon models. Available in many styles and sizes per application requirements. Skiff-style shown.



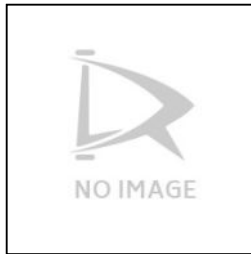
### Stainless Brakelines

A valuable upgrade to any trailer, but especially those to see service in coastal regions with salt water exposure.



#### **Aluminum Wheels**

A stylish option available with bias-ply or radial tires for most models in 12", 13", 14", 15" and 16" sizes.



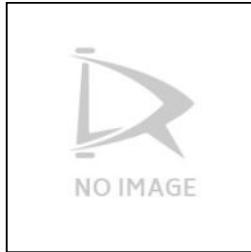
#### **AU to US Wiring Adapter**

Facilitates US DOT basic lighting functions for domestic transport of Australian designated models.



#### **Drop-Style Tongue Jack**

An upgraded jack that provides greater capacities and fast setup with no need to swivel.



#### **Metric Tow Ball Adapter**

For US transport of AU models with metric coupler as original equipment.