

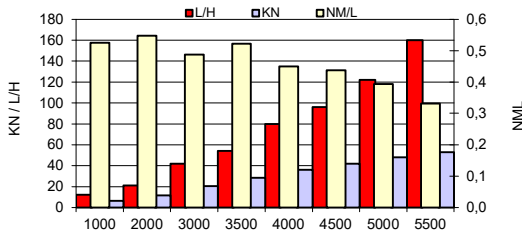
TEST CONDITIONS

Test Date	10.12.2020
Test Conductor	Glenn Furuheim / Knut Torbjørnsen
Boat Weight as Tested (kg)	approx.2940
Air Temperature (degrees C)	2
Elevation (m)	0
Sea State (calm / smooth / slight / moderate)	Calm
Wind Velocity range (kn)	1
Fresh/Salt Water	Salt
Fuel Level at Testing (l)	30 %

PERFORMANCE SUMMARY

Top Speed (kn @ rpm)	53 @ 5800
Acceleration 0 - 20 kn (seconds)	3,5
Acceleration 0 - 30 kn (seconds)	5,2
Best Fuel Economy (nm/l @ rpm)	0,5 @ 3500

PERFORMANCE CURVE



PERFORMANCE DATA

RPM	SPEED	FUEL CONSUMPTION		RANGE	FUEL CONSUMPTION	
		L/H	NM/L		NM	L/NM
1000	6,3	12	0,5	200,0	1,9	
2000	11,5	21	0,5	200,0	1,8	
3000	20,5	42	0,5	200,0	2,0	
3500	28,2	54	0,5	200,0	1,9	
4000	36	80	0,5	200,0	2,2	
4500	42	96	0,4	160,0	2,3	
5000	48	122	0,4	160,0	2,5	
5500	53	160	0,3	120,0	3,0	
5800	54	164	0,3	120,0	3,0	
Top RPM	54	164	0,3	120,0	3,0	

ENGINE SPECIFICATIONS

Number of Engines	2
Engine	Mercury 250 Verado
Horsepower	250
Cylinders	V8
Drive or gear model and ratio	1,85
Engine Length (in)	25"

BOAT SPECIFICATIONS

Region/s sold	Norway
Manufacturer	Zodiac
Website	https://www.zodiac-nautic.com/en/
Boat Model	Medline 9
Boat Type	Inflatable - Rigid Hull (RIB)
Material	Fiberglass
Length (m)	8,9
Beam (m)	3,06
Max hp Capacity	2 x 350
Fuel Tank Capacity (l)	400 L
Steering Type	PWR steering
Dry Boat Weight (kg)	1850
Mounting Bolt Hole (outboard)	4

PROPELLER SPECIFICATIONS

Part Number	
Part Number	
Part Number	
Part Number	
Mercury Name	Bravo 1 FS
Material	SS
Diameter/Pitch	25"
Number of Blades	4

Active trim profile 5



MERCURY MARINE PO BOX 1939 FOND DU LAC, WISCONSIN 54936-1939

©2015 Mercury Marine, All Rights Reserved. Results on individual boats may vary depending on many factors.

800-MERCURY MERCURYMARINE.COM

Boatbuilder authorize Mercury to publish the BHB on Mercury WEB site: Y

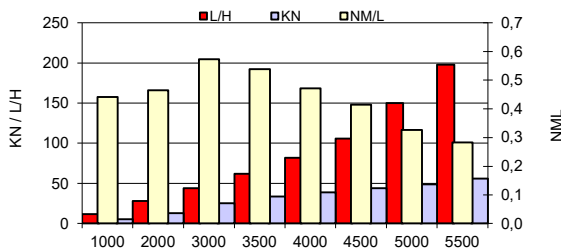
TEST CONDITIONS

Test Date	10.12.2020
Test Conductor	Glenn Furuheim
Boat Weight as Tested (kg)	approx.2940
Air Temperature (degrees C)	2
Elevation (m)	0
Sea State (calm / smooth / slight / moderate)	Calm
Wind Velocity range (kn)	1
Fresh/Salt Water	Salt
Fuel Level at Testing (l)	30 %

PERFORMANCE SUMMARY

Top Speed (kn @ rpm)	58 @ 5900
Acceleration 0 - 20 kn (seconds)	3,5
Acceleration 0 - 30 kn (seconds)	5,2
Best Fuel Economy (nm/l @ rpm)	0,6 @ 3000

PERFORMANCE CURVE



PERFORMANCE DATA

RPM	SPEED	FUEL CONSUMPTION		RANGE	FUEL CONSUMPTION
		L/H	NM/L		
1000	5,3	12	0,4	160,0	2,3
2000	13	28	0,5	200,0	2,2
3000	25,2	44	0,6	240,0	1,7
3500	33,4	62	0,5	200,0	1,9
4000	38,7	82	0,5	200,0	2,1
4500	44	106	0,4	160,0	2,4
5000	49	150	0,3	120,0	3,1
5500	56	198	0,3	120,0	3,5
6000	58	198	0,3	120,0	3,4
Top RPM	58	198	0,3	120,0	3,4

ENGINE SPECIFICATIONS

Number of Engines	2
Engine	Mercury 300 Verado
Horsepower	300
Cylinders	V8
Drive or gear model and ratio	1,85
Engine Length (in)	25"

BOAT SPECIFICATIONS

Region/s sold	Norway
Manufacturer	Zodiac
Website	https://www.zodiac-nautic.com/en/
Boat Model	Medline 9
Boat Type	Inflatable - Rigid Hull (RIB)
Material	Fiberglass
Length (m)	8,9
Beam (m)	3,06
Max hp Capacity	2 x 350
Fuel Tank Capacity (l)	400 L
Steering Type	PWR steering
Dry Boat Weight (kg)	1850
Mounting Bolt Hole (outboard)	4

PROPELLER SPECIFICATIONS

Part Number	8M0127050
Part Number	8M0127051
Part Number	
Part Number	
Mercury Name	Enertia ECO 22"
Material	SS
Diameter/Pitch	16 x 22"
Number of Blades	3

Active trim profile 5



MERCURY MARINE PO BOX 1939 FOND DU LAC, WISCONSIN 54936-1939

©2015 Mercury Marine, All Rights Reserved. Results on individual boats may vary depending on many factors.

800-MERCURY MERCURYMARINE.COM

Boatbuilder authorize Mercury to publish the BHB on Mercury WEB site: Y