



**ARMADA**  
PONTONS • PEDALOS

**MAGIC SKY**



PASSENGER CAPACITY  
**9-12 PEOPLE**



LOAD CAPACITY  
**1638-2034 LBS**

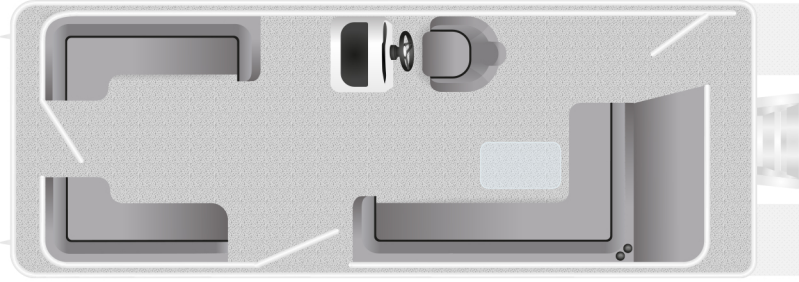


MAX. POWER  
**80-160 HP**

**[WWW.ARMADAMARINE.CA](http://WWW.ARMADAMARINE.CA)**



**22' x 8'**



**18' x 8'**



**20' x 8'**



## FURNISHINGS

- Premium furnishings with aluminum coated bases
- Optimal storage space under each module
- Swivelling driver's seat with slider
- L-shaped rear bench with 1 long bench on passenger side and 1 lounge bench on driver side
- Washroom and dressing room on M-228 only

## INSTRUMENTATION

- Fuel level indicator
- Tachometer
- Speed indicator
- Voltmeter
- Engine tilt indicator (trim)
- Electric horn
- Driving system

## CONSOLE

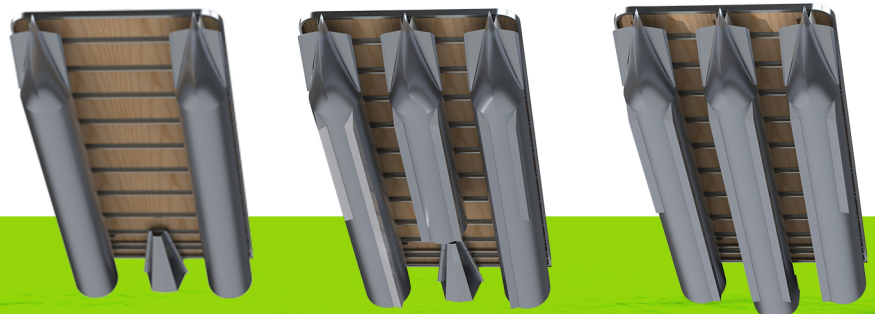
- Luxury Fibreglass Console
- Luxury tilt steering wheel
- Courtesy light
- 12-volt electrical socket
- Tinted sport windshield with quick-release fasteners

## POPULAR OPTIONS

- Additional centre front half tube
- 3rd tube in the centre complete with integrated engine box
- Lifting strakes
- Luxury marine woven vinyl flooring
- Longitudinal LED light under the floor
- Bluetooth sound system
- Full camper enclosure
- Mooring cover
- Fuel tank

## CONFIGURATION

STANDARD, SPORT  
PERFORMANCE



# MAGIC SKY



**ARMADA**  
PONTONS • PEDALOS



## WHITE OUTER SHEET

The upholstery colour schemes to match the white sheet metal of your Magic Sky pontoon.

### FURNISHINGS



## BLACK OUTER SHEET

The furnishing colour schemes to match the black sheet metal of your Magic Sky pontoon.

### FURNISHINGS

