

Parts Manual

NV360

V-Blade





500 Venture Drive
Orrville Oh 44667
www.ventrac.com

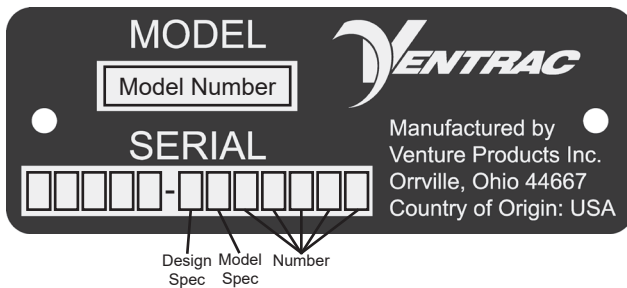
View all manuals



Visit ventrac.com/manuals for the latest version of this parts manual.

A downloadable operator's manual is also available.

Serial Number Description



Serial Plate Location



Notes

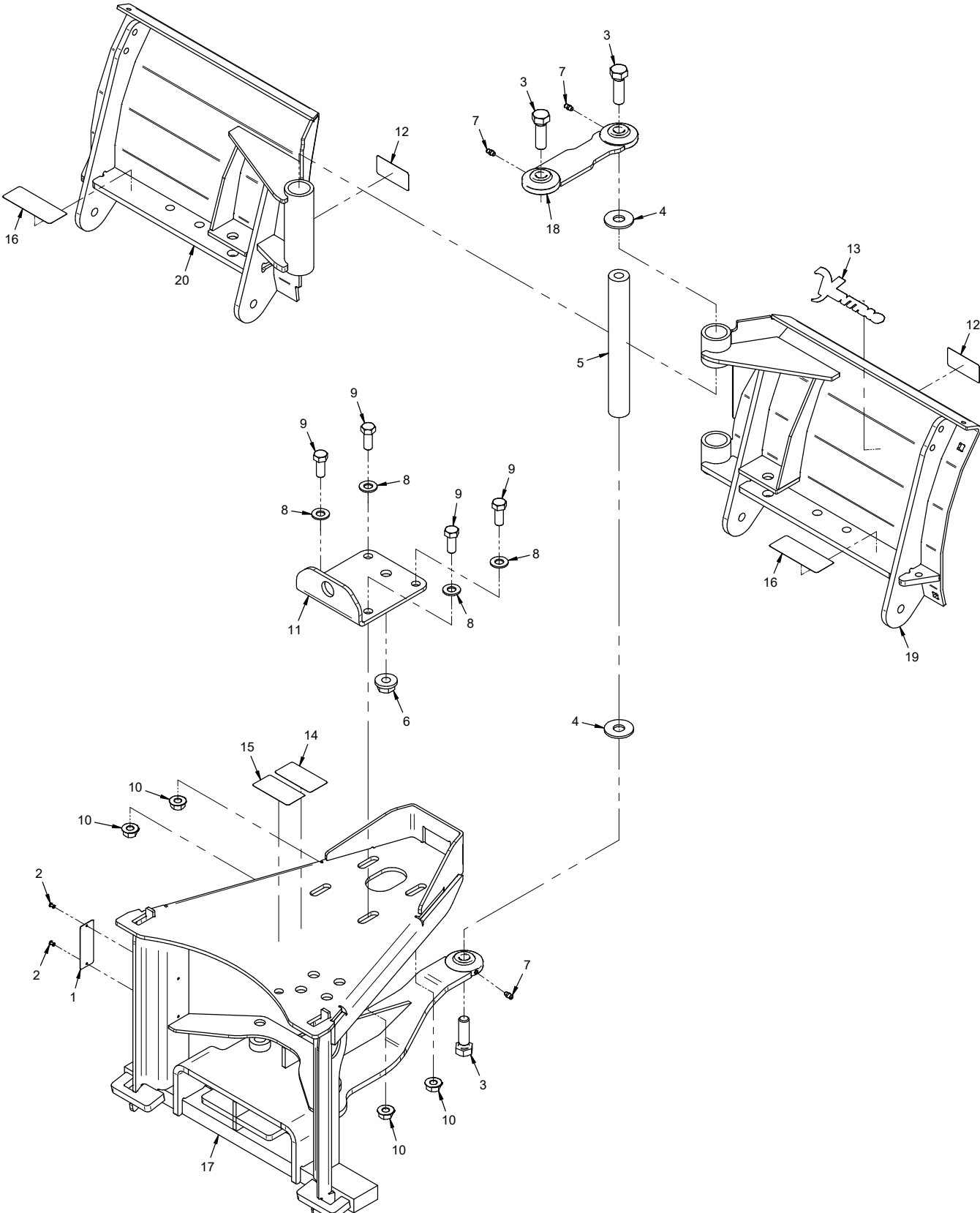
- If any component requires replacement, use only original Ventrac replacement parts.
- When ordering new components, be sure to order all required safety decals. All current safety decals must be affixed to the replacement components prior to installation of the component.

TABLE OF CONTENTS

PARTS	PAGE 4
Main Frame, Blade Wings, and Blade Pivot.....	4
Blade Trip Pivot.....	6
Blade Trip Slide and Lower Blade Frames.....	8
Cutting Edges and Skid Shoes	10
Hydraulic Blade Angle	12
70.8220 Polyurethane Edge Kit	14

PARTS

ILLUSTRATED DRAWING Main Frame, Blade Wings, and Blade Pivot



PARTS

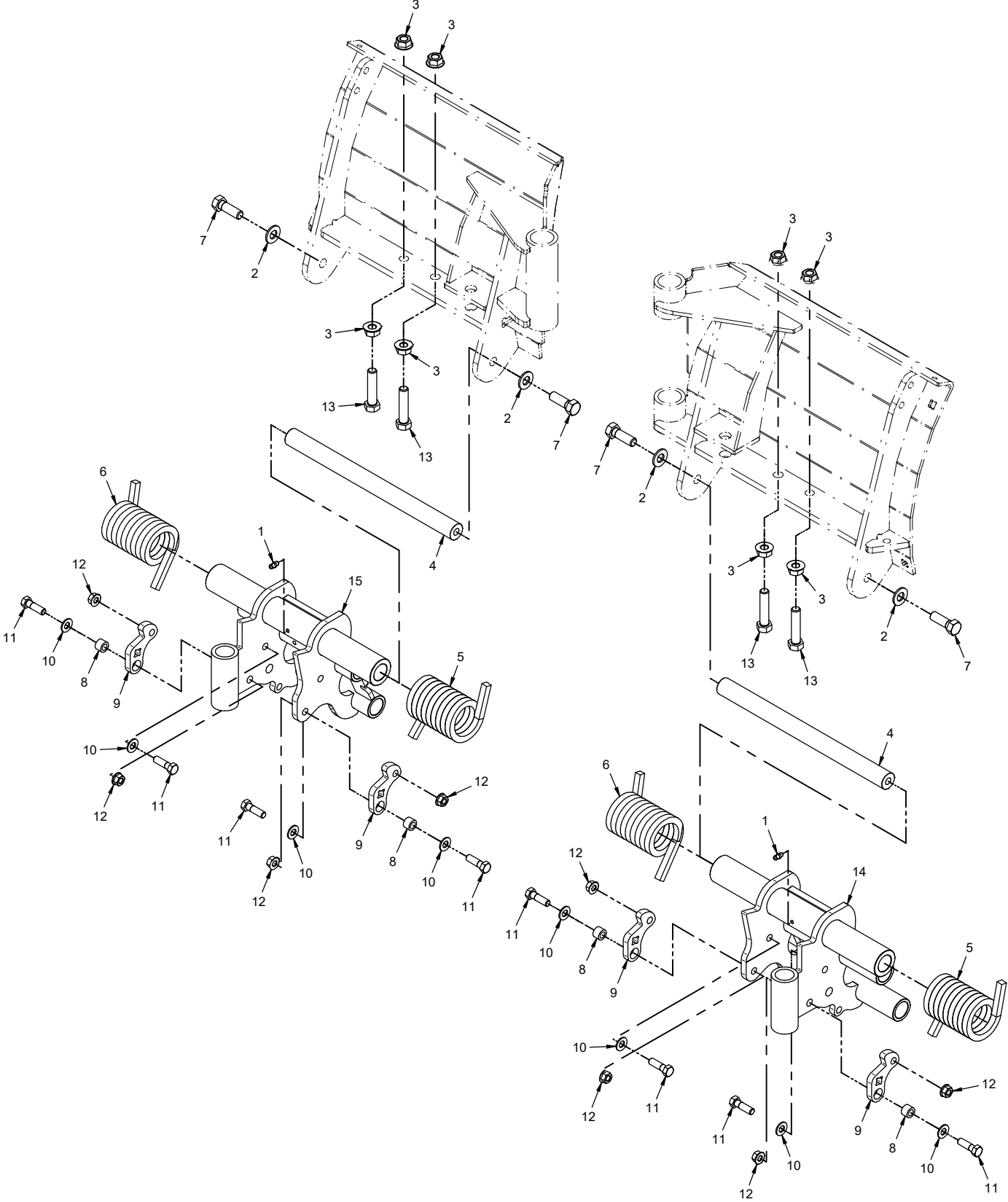
Main Frame, Blade Wings, and Blade Pivot

REF.	PART NO.	DESCRIPTION	QTY.
1	N/A	.Plate, Ventrac Serial Number	1
2	04.0029	.Rivet, Pop 1/8" X 1/4" SS	2
3	90.1016	.Bolt, 5/8-11 USS x 2	3
4	94.10	.Washer, Flat 5/8 USS	2
5	NV-1054	.Shaft, Center Pivot	1
6	99.E0094	.Locknut, 5/8-11 Flanged Stover	1
7	29.GF0001	.Grease Ftg, 1/4 SAE ST	3
8	95.08	.Washer, Flat 1/2 SAE	4
9	90.0810	.Bolt, 1/2-13 USS x 1-1/4	4
10	99.SF08	.Nut, SRF 1/2-13 USS	4
11	NV-1082	.Plate, Pivot Link Mount	1
12	00.0364	.Decal, Warning Pinch Point	2
13	00.0382	.Decal, Ventrac	1
14	00.0619	.Decal, Read Operator's Manual	1
15	00.0621	.Decal, High Pressure Fluid Hazard	1
16	00.0620	.Decal, Pinching or Crushing Hazard	2
17	NV-6005	.Frame, Main Hitch	1
18	ND-6004	.Link, Upper Pivot	1
19	NV-6007	.Frame, Right Wing	1
20	NV-6016	.Frame, Left Wing	1

PARTS

ILLUSTRATED DRAWING

Blade Trip Pivot



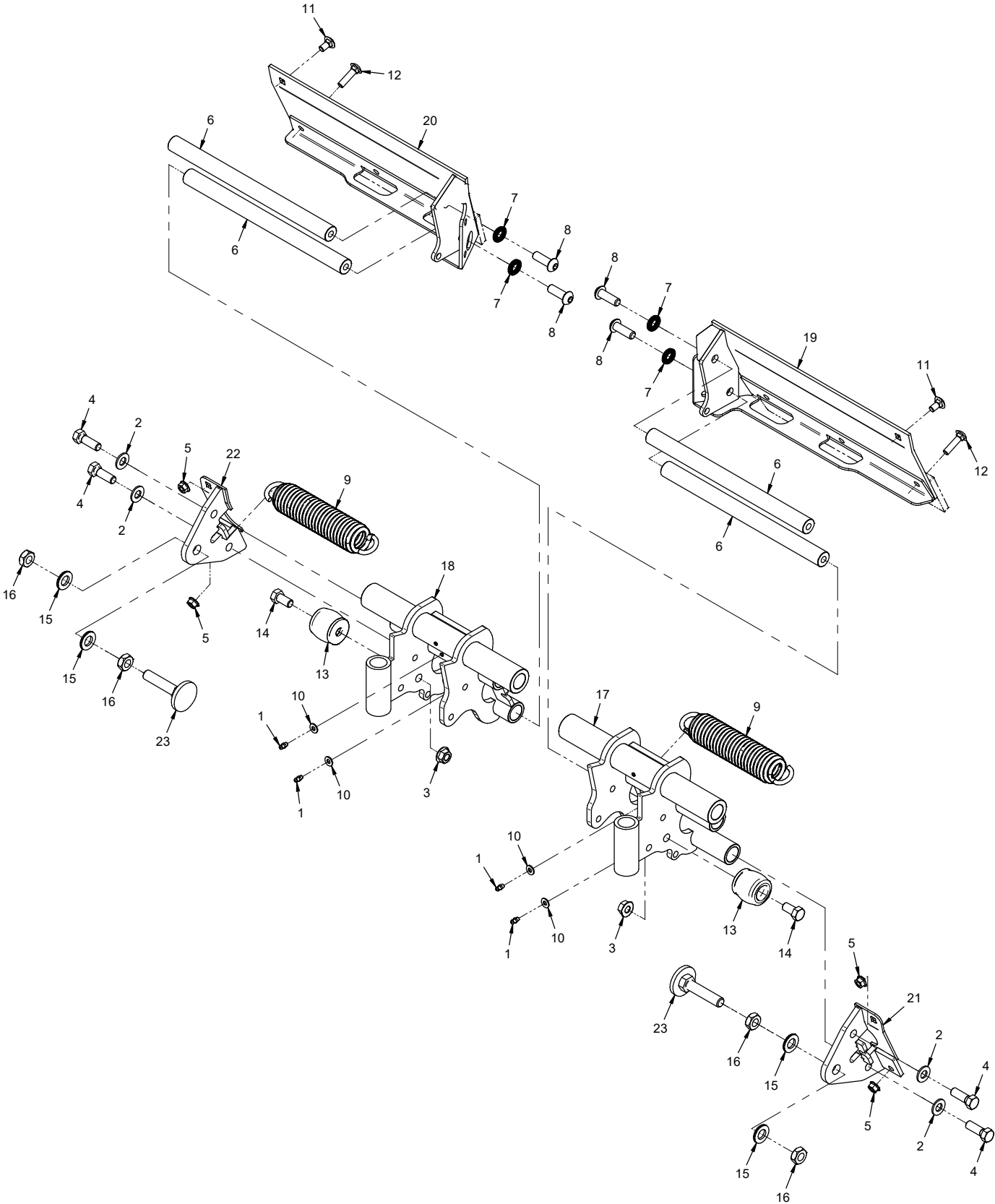
PARTS

Blade Trip Pivot

REF.	PART NO.	DESCRIPTION	QTY.
1	29.GF0001	Grease Ftg, 1/4 SAE ST	2
2	95.08	Washer, Flat 1/2 SAE	4
3	99.SF08	Nut, SRF 1/2-13 USS	8
4	NV-1056	Shaft, Blade Trip Pivot	2
5	41.0135	Spring, Torsion RH NV	2
6	41.0136	Spring, Torsion LH NV	2
7	90.0812	Bolt, 1/2-13 USS x 1-1/2	4
8	NV-1101	Bushing, Spring Tension Pivot	4
9	NV-1100	Lever, Spring Tension	4
10	95.06	Washer, Flat 3/8 SAE	8
11	90.0610	Bolt, 3/8-16 USS x 1-1/4	8
12	99.SF06	Nut, SRF 3/8-16 USS	8
13	90.0818-2	Bolt, 1/2-13 USS x 2-1/4 Tap	4
14	NV-6011	Frame, Blade Trip Right	1
15	NV-6018	Frame, Blade Trip Left	1

PARTS

ILLUSTRATED DRAWING Blade Trip Slide and Lower Blade Frames



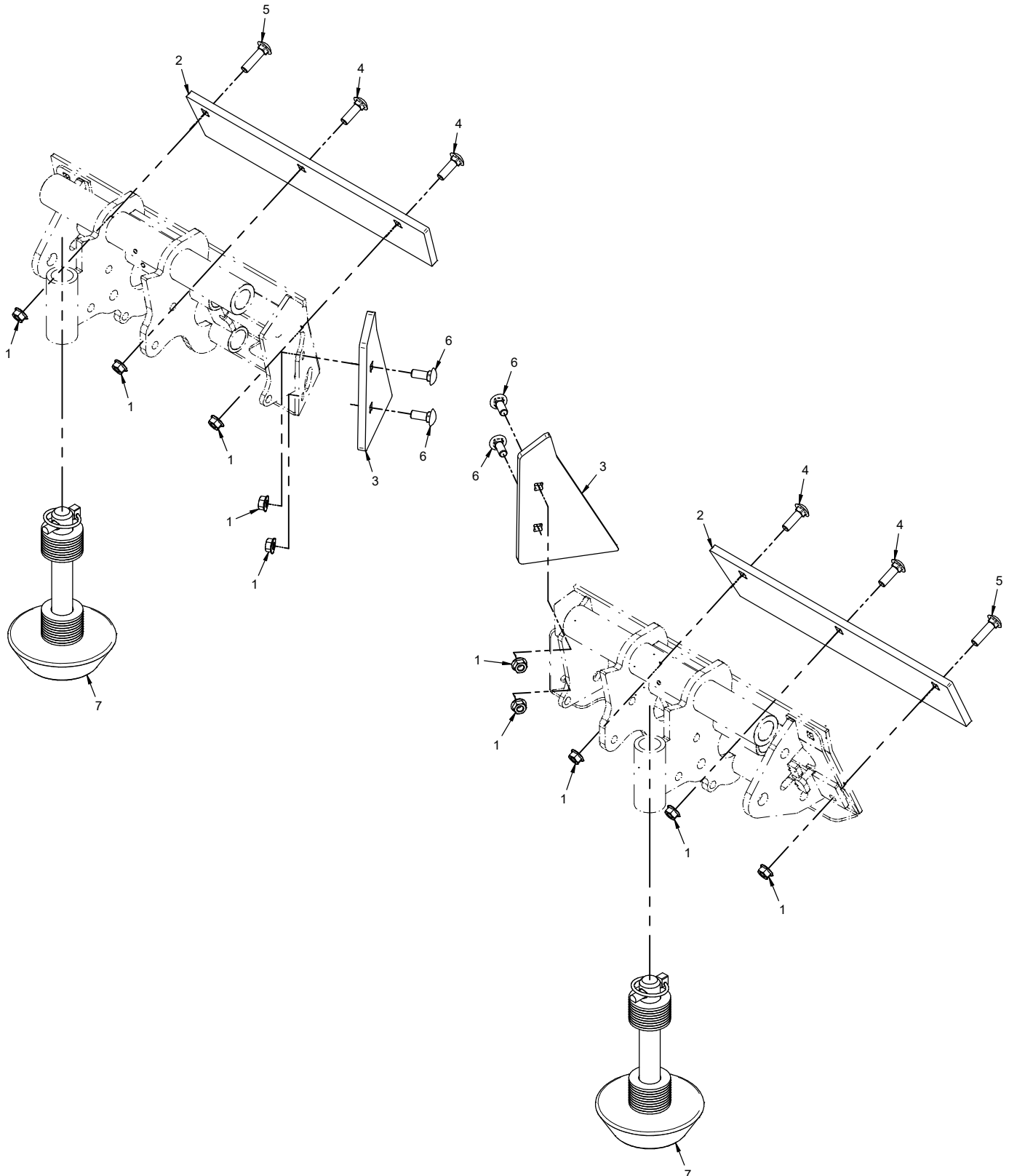
PARTS

Blade Trip Slide and Lower Blade Frames

REF.	PART NO.	DESCRIPTION	QTY.
1	29.GF0001	.Grease Ftg, 1/4 SAE ST.	4
2	95.08	.Washer, Flat 1/2 SAE	4
3	99.SF08	.Nut, SRF 1/2-13 USS	2
4	90.0812	.Bolt, 1/2-13 USS x 1-1/2	4
5	99.SF06	.Nut, SRF 3/8-16 USS	4
6	NV-1067	.Shaft, Blade Slide	4
7	96.08-2	.Washer, Nordlock 1/2"	4
8	99.0812	.Bolt, 1/2-13 x 1-1/2 BSCS	4
9	41.0137	.Spring, Ext. 1.895 OD x 8.75" L	2
10	95.04-3	.Washer, Flat 1/4 SAE SS	4
11	97.0606	.Bolt, Carriage 3/8-16 x 3/4	2
12	97.0612	.Bolt, Carriage 3/8-16 x 1 1/2	2
13	05.0189	.Bumper, Axial 3,200 Lbs PF	2
14	90.0808	.Bolt, 1/2-13 USS x 1	2
15	96.10-2	.Washer, Nordlock 5/8"	4
16	99.E0076	.Nut, Jam 5/8-11 USS	4
17	NV-6011	.Frame, Blade Trip Right	1
18	NV-6018	.Frame, Blade Trip Left	1
19	NV-6006	.Frame, Blade Right	1
20	NV-6017	.Frame, Blade Left	1
21	NV-6012	.Frame, Spring Anchor Right	1
22	NV-6019	.Frame, Spring Anchor Left	1
23	NV-6013	.Anchor, Blade Bumper Stop	2

PARTS

ILLUSTRATED DRAWING Cutting Edges and Skid Shoes



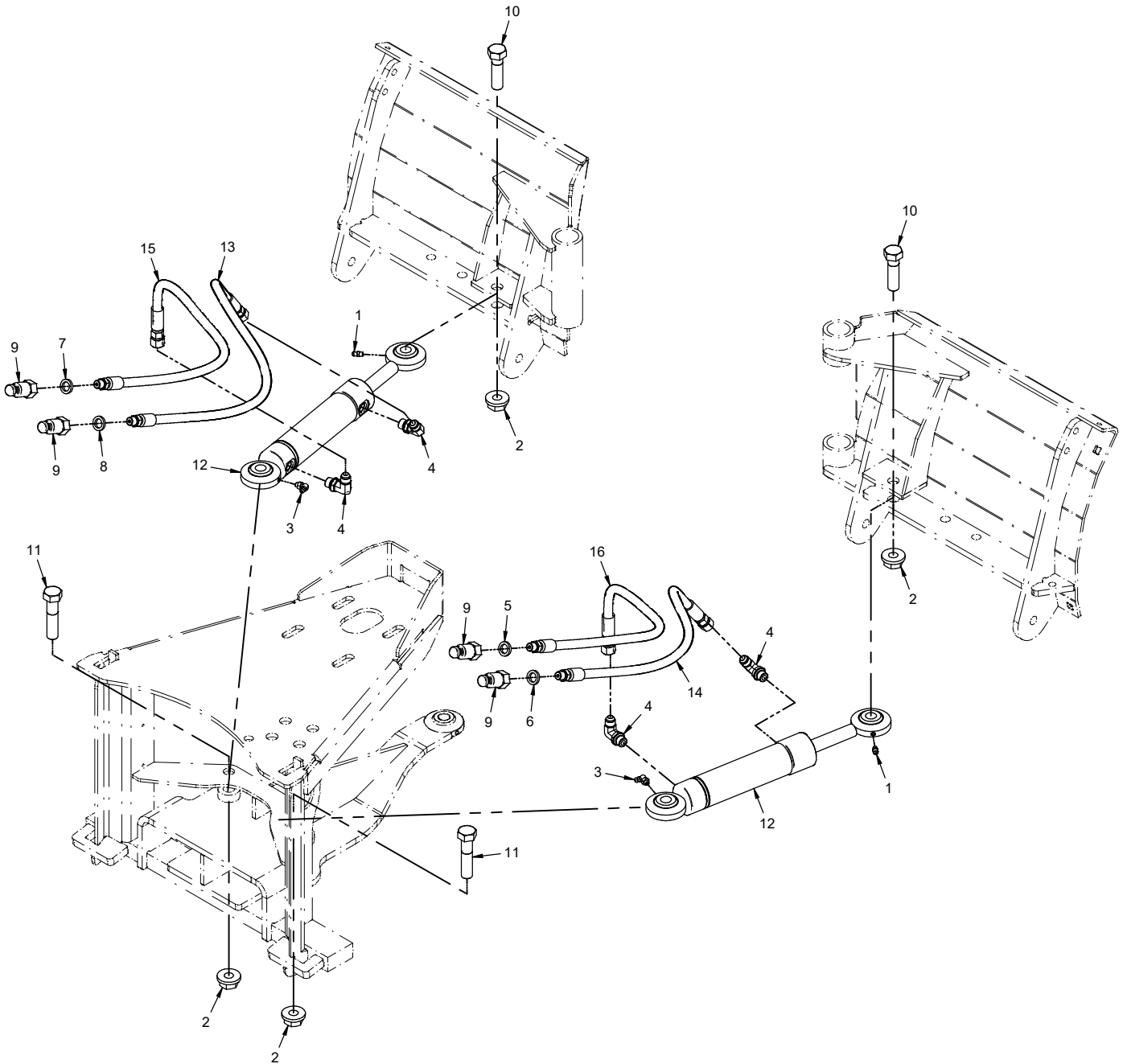
PARTS

Cutting Edges and Skid Shoes

REF.	PART NO.	DESCRIPTION	QTY.
1	99.SF06	Nut, SRF 3/8-16 USS	10
2	NV-1023	Cutting Edge, NV360	2
3	NV-1031	Cutting Edge, Inner	2
4	97.0610	Bolt, Carriage 3/8-16 x 1-1/4	4
5	97.0612	Bolt, Carriage 3/8-16 x 1 1/2	2
6	97.0608	Bolt, Carriage 3/8-16 x 1	4
7	79.0122	Shoe, Skid Round Asm.	2

PARTS

ILLUSTRATED DRAWING Hydraulic Blade Angle



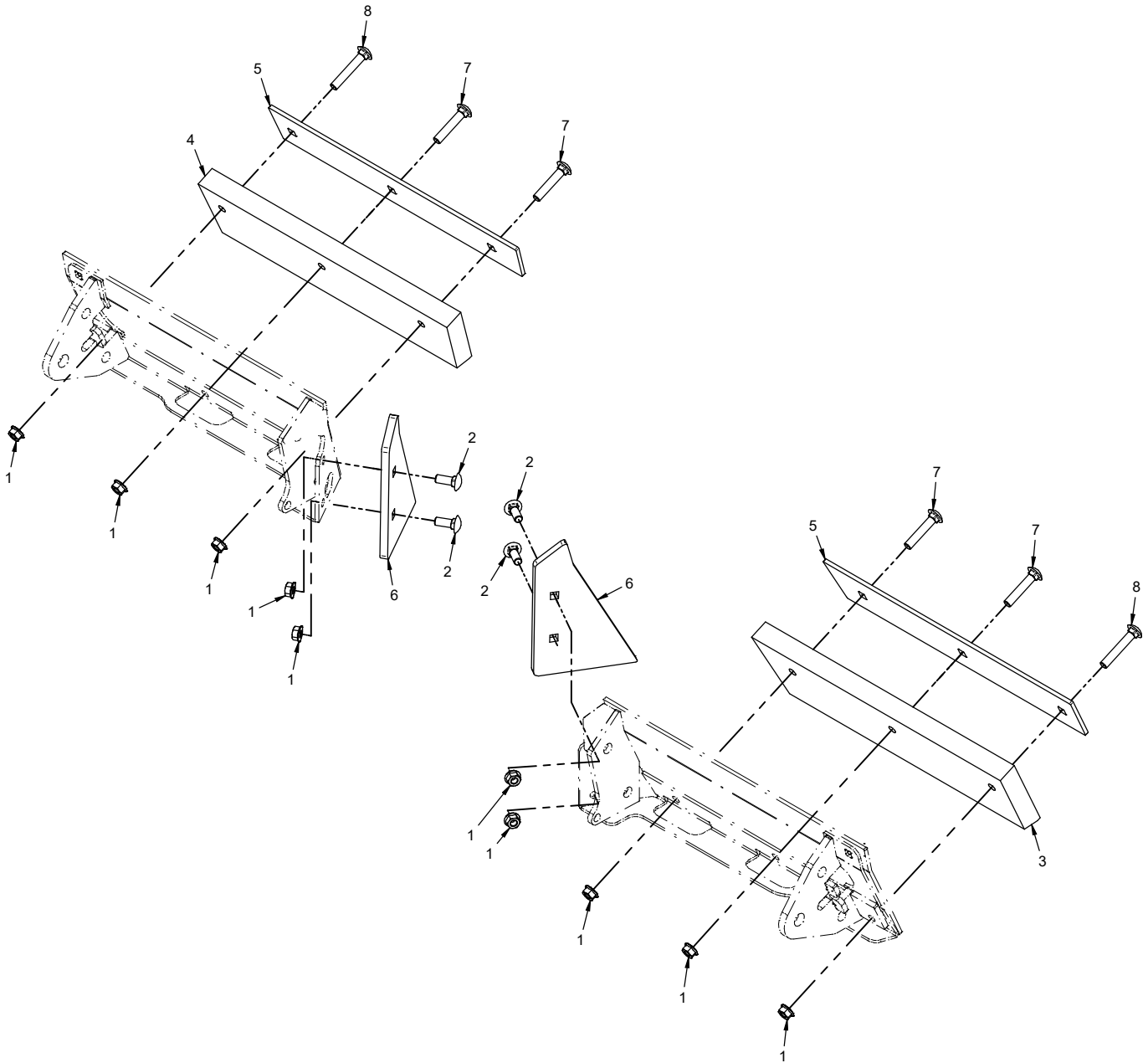
PARTS

Hydraulic Blade Angle

REF.	PART NO.	DESCRIPTION	QTY.
1	29.GF0001	Grease Ftg, 1/4 SAE ST	2
2	99.E0094	Locknut, 5/8-11 Flanged Stover	4
3	29.GF0002	Grease Ftg, 1/4 SAE 90	2
4	25.6801-06-06	Fitting, 90 ME 3/8 x 3/8	4
5	05.0116	Washer, .544 ID x .817 x .14 Red	1
6	05.0117	Washer, .544 ID x .817 x .14 Yel	1
7	05.0157	Washer, .544 ID x .817 x 14 Bk	1
8	05.0156	Washer, .544 ID x .817 x 14 Nat	1
9	23.0176	Coupler, Male Flat Face Quick 1/4	4
10	90.1018	Bolt, 5/8-11 USS x 2-1/4	2
11	90.1022	Bolt, 5/8-11 USS x 2-3/4	2
12	23.0130	Cylinder, 1-1/2" X 5"	2
13	20.0347	Hose, 1/4x35.00 SAE 100R17AR	1
14	20.0347	Hose, 1/4x35.00 SAE 100R17AR	1
15	20.0346	Hose, 1/4x30.00 SAE 100R17AR	1
16	20.0346	Hose, 1/4x30.00 SAE 100R17AR	1

PARTS

ILLUSTRATED DRAWING 70.8220 Polyurethane Edge Kit



PARTS

70.8220 Polyurethane Edge Kit

REF.	PART NO.	DESCRIPTION	QTY.
1	99.SF06	Nut, SRF 3/8-16 USS	10
2	97.0608	Bolt, Carriage 3/8-16 x 1	4
3	NV-1120	Cutting Edge, Poly Right	1
4	NV-1121	Cutting Edge, Poly Left	1
5	NV-1122	Clamp, Poly Backer	2
6	NV-1124	Cutting Edge, UHMW Inner	2
7	97.0616	Bolt, Carriage 3/8-16 x 2	4
8	97.0618	Bolt, Carriage 3/8-16 x 2-1/4	2