

# AG SHIELD



**12" Cross Auger for MacDon Flex headers  
FD 70 30 foot (ASM part# 405883)  
FD70 35 foot (ASM part# 405868)  
FD70 40 foot (ASM part# 405869)  
FD70 45 foot (ASM part# 4058725)**

## **Direct Drive models OPERATOR'S HANDBOOK AND PARTS MANUAL**

Ag Shield Manufacturing  
Box 9, Benito, Manitoba R0L 0C0  
Phone 800-561-0132 or 204-539-2000  
Fax 204-539-2130  
Email address: [sales@agshield.com](mailto:sales@agshield.com)  
Web site at <http://www.agshield.com>

# 1. TABLE OF CONTENTS

1.	TABLE OF CONTENTS.....	2
2.	INTRODUCTION AND SIGN-OFF FORM .....	3
3.	SAFETY .....	4
3.1.	SAFETY OVERVIEW.....	5
3.2.	GENERAL SAFETY .....	5
3.3.	MAINTENANCE SAFETY .....	6
3.4.	HYDRAULIC SAFETY .....	6
3.5.	STORAGE SAFETY .....	6
3.6.	TRANSPORT SAFETY .....	6
3.7.	REFUELING SAFETY .....	7
3.8.	TIRE SAFETY.....	7
3.9.	OPERATING SAFETY.....	7
3.10.	CROSS AUGER SAFETY .....	7
3.11.	SAFETY DECALS .....	8
4.	SETUP FROM SHIPPING MODE.....	9
4.1.	HYDRAULIC INSTALLATION.....	17
4.2.	HYDRAULIC MOTOR HOSE INSTALL.....	20
4.3.	STRIPPER BAR INSTALLATION.....	21
4.4.	STRIPPER BAR INSTALLATION.....	ERROR! BOOKMARK NOT DEFINED.
4.5.	CENTER BOLT ON EAR SLOT POSITION.....	22
5.	OPERATIONS .....	23
5.1.	FIELD SETTING THE CROSS AUGER .....	23
6.	CROSS AUGER PARTS FOR MACDON FD70 35 FT, 40 - 45 FT MODELS .....	24
6.1.	RIGHT END MOUNT .....	24
6.2.	LEFT HAND END DIRECT DRIVE MOTOR AND MOUNT.....	25
6.3.	CENTER FLEX ASSEMBLY AND MOUNT .....	26
6.4.	INTERNAL PARTS CENTER FLEX ASSEMBLY 30-35 FT.....	27
7.	WARRANTY .....	29



### 3. SAFETY

## SAFETY ALERT SYMBOL

This Safety Alert symbol means:  
**ATTENTION! BECOME ALERT!**  
**YOUR SAFETY IS INVOLVED!**

The Safety Alert symbol identifies important safety messages on the Ag Shield Cross auger and in the manual. When you see this symbol, be alert to the possibility of personal injury or death. Follow the instructions in the safety message.



### 3 Big Reasons

**Accidents Disable and Kill**  
**Accidents Cost**  
**Accidents Can Be Avoided**

#### SIGNAL WORDS:

Note the use of the signal words **DANGER**, **WARNING** and **CAUTION** with the safety messages. The appropriate signal word for each message has been selected using the following guide-lines:

**DANGER** - An immediate and specific hazard which **WILL** result in severe personal injury or death if the proper precautions are not taken.

**WARNING** - A specific hazard or unsafe practice which **COULD** result in severe personal injury or death if proper precautions are not taken.

**CAUTION** - Unsafe practices which **COULD** result in personal injury if proper practices are not taken, or as a reminder of good safety practices.





### 3.1. SAFETY OVERVIEW

**YOU** are responsible for the **SAFE** operation and maintenance of your Ag Shield Cross auger. **YOU** must ensure that you and anyone else who is going to operate, maintain or work around the canola pusher be familiar with the operating and maintenance procedures and related **SAFETY** information contained in this manual. This manual will take you step-by-step through your working day and alerts you to all good safety practices that should be adhered to while operating the canola pusher.

Remember, **YOU** are the key to safety. Good safety practices not only protect you but also the people around you. Make these practices a working part of your safety program. Be certain that **EVERYONE** operating this equipment is familiar with the recommended operating and maintenance procedures and follows all the safety precautions. Most accidents can be prevented. Do not risk injury or death by ignoring good safety practices.

- Cross auger owners must give operating instructions to operators or employees before allowing them to operate the Cross auger, and at least annually thereafter per OSHA regulation 1928.57.
- The most important safety device on this equipment is a **SAFE** operator. It is the operator's responsibility to read and understand **ALL** Safety and Operating instructions in the manual and to follow these. All accidents can be avoided.
- A person who has not read and understood all operating and safety instructions is not qualified to operate the machine. An untrained operator exposes himself and bystanders to possible serious injury or death.
- Do not modify the equipment in any way. Unauthorized modification may impair the function and/or safety and could affect the life of the equipment.
- Think **SAFETY!** Work **SAFELY!**

### 3.2. GENERAL SAFETY

1. Read and understand the Operator's Manual and all safety signs before operating, maintaining, adjusting the Cross auger. 
2. Only trained competent persons shall operate the auger. An untrained operator is not qualified to operate the machine. 
3. Have a first-aid kit available for use should the need arise and know how to use it. 2.
4. Have a fire extinguisher available for use should the need arise and know how to use it. 
5. Do not allow riders. 4.
6. Wear appropriate protective gear. This list includes but is not limited to: 
  - A hard hat
  - Protective shoes with slip resistant soles
  - Protective glasses or goggles
  - Heavy gloves
  - Hearing protection 6.
7. Stop the engine, place all controls in neutral, set park brake, remove ignition key and wait for all moving parts to stop before servicing, adjusting, repairing or unplugging.
8. Review safety related items with all personnel.

### 3.3. MAINTENANCE SAFETY

1. Review the Operators Manual and all safety items before working with, maintaining or operating the Cross auger.
2. Stop the tractor engine, place all controls in neutral, set park brake, remove ignition key, wait for all moving pads to stop before servicing, adjusting, or repairing.
3. Before applying pressure to a hydraulic system, make sure all components are tight and that steel lines, hoses and couplings are not damaged.
4. Relieve pressure from hydraulic circuit before servicing or disconnecting from tractor.
5. Keep hands, feet, clothing and hair away from all moving and/or rotating parts.
6. Clear the area of bystanders, especially children, when carrying out any maintenance and repairs or making any adjustments.
7. Place stands or blocks under the frame before working beneath the machine.

### 3.4. HYDRAULIC SAFETY

1. Always place all tractor hydraulic controls in neutral before dismounting.
2. Make sure that all components in the hydraulic system are kept in good condition and are clean.
3. Replace any worn, cut, abraded, flattened or crimped hoses and steel lines.
4. Do not attempt any makeshift repairs to the hydraulic lines, fittings or hoses by using tape, clamps or cements. The hydraulic system operates under extremely high-pressure. Such repairs will fail suddenly and create a hazardous and unsafe condition.
5. Wear proper hand and eye protection when searching for a high-pressure hydraulic leak. Use a piece of wood or cardboard as a backstop instead of hands to isolate and identify a leak.
6. If injured by a concentrated high-pressure stream of hydraulic fluid, seek medical attention immediately. Serious infection or toxic reaction can develop from hydraulic fluid piercing the skin surface.

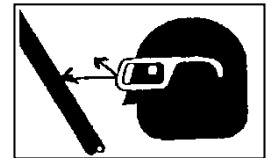
7. Before applying pressure to hydraulic system make sure that all connections are tight and that all hoses and fittings are in good condition.

### 3.5. STORAGE SAFETY

1. Store unit in an area away from human activity.
2. Do not permit children to play on or around the stored Cross auger.

### 3.6. TRANSPORT SAFETY

1. Read and understand ALL the information in the Operator's Manual regarding procedures and SAFETY when operating the Cross auger in the field and/or on the road.
2. Check with local authorities regarding machinery transport on public roads. Obey all applicable laws and regulations.
3. Always travel at a safe speed. Use caution when making corners or meeting traffic.



4. Make sure the SMV (Slow Moving Vehicle) emblem and all the lights and reflectors that are required by the local highway and transport authorities are in place, are clean and can be seen clearly by all overtaking and oncoming traffic. Daybreak and dusk are particularly dangerous and pilot vehicles are recommended.
5. Ensure that the trailer is hitched positively to the towing vehicle. Always use a safety chain between the trailer and the tractor.
6. Keep to the right and yield the right-of-way to allow faster traffic to pass. Drive on the road shoulder, if permitted by law.
7. Always use hazard warning flashers on the Cross auger when transporting unless prohibited by law.

### 3.7. REFUELING SAFETY

1. Handle fuel with care. It is highly flammable.



2. Do not refuel the machine while smoking or when near open flame or sparks.

3. Stop engine before refueling.  
Clean up spilled fuel before restarting engine.

### 3.8. TIRE SAFETY

1. Failure to follow proper procedures when mounting a tire on a wheel or rim can produce an explosion, which may result in serious injury or death.
2. Do not attempt to mount a tire unless you have the proper equipment and experience to do the job.
3. Have a qualified tire dealer or repair service perform required tire maintenance.
4. Operate the tires at the pressures, loads, and speeds suggested by the manufacturer.

### 3.9. OPERATING SAFETY

1. Read and understand the Operator's Manual and all safety signs before using.
2. Stop engine place all controls in neutral, set park brake, remove ignition key, wait for all moving parts to stop before servicing, adjusting, repairing or unplugging.
3. Before conditioning a field, be familiar with all potential hazards: trees, rocks ditches, gullies, etc. Plan your route to avoid hazards. Keep Cross auger width in mind when maneuvering to avoid obstacles.
4. Keep hands, feet, hair and clothing away from all moving and/or rotating parts.
5. Keep all shields and guards in place when operating.
6. Do not allow riders on the Cross auger or tractor during operation or transporting.
7. Clear the area of all bystanders, especially children, before starting.

8. Stay away from machine when folding deflectors. Keep others away.
9. Before applying pressure to the hydraulic system, make sure all components are tight and that steel lines, hoses and couplings are not damaged.
10. Review safety instructions annually

### 3.10. CROSS AUGER SAFETY

The cross auger has sufficient power to sever limbs and cause serious to fatal injury. Always stop the cross auger before dismounting. Always be certain that no one is in front of combine header Shield before engaging the auger drive.

When greasing the auger, do so with the combine motor shut off and the park brake securely set.

Never attempt to help the crop move along the canvases with a wrench or other item that might get into the auger and draw the wrench holder into the auger.

### 3.11. SAFETY DECALS

Become familiar with these decals and the hazards they are marking.



part #113522

part #113524



part # 113552



## 4. Setup from Shipping Mode

Operator's handbook for Ag Shield Cross auger to fit on to a 35-45 ft MacDon D70 header

Figure 1 FD70 35 ft and 40 ft header overview with asm cross auger installed.....	9
Figure 2 LH end front view macdon D50 - 60 KIT's # 405865, 405866, 405867 .....	11
Figure 3 Top view of left end mount .....	11
Figure 4 Stop Bolt Instructions for Field Use .....	12
Figure 5 Center Mount Adapter (light blue) and Bearing Mount (dark blue) .....	13
Figure 6 Right end MOUNT MACDON 35-45 FT FD70 HEADER KIT's # 405868, 405869, 405870 .....	14
Figure 7 2011 Hydraulic hoses on FD70 / Case 2162 .....	17
Figure 8 Canvas return hose left side of center .....	18
Figure 9 Hose attachment from Bottom up .....	19
Figure 10 Sauer Motor speed control .....	23

### Installation sequence

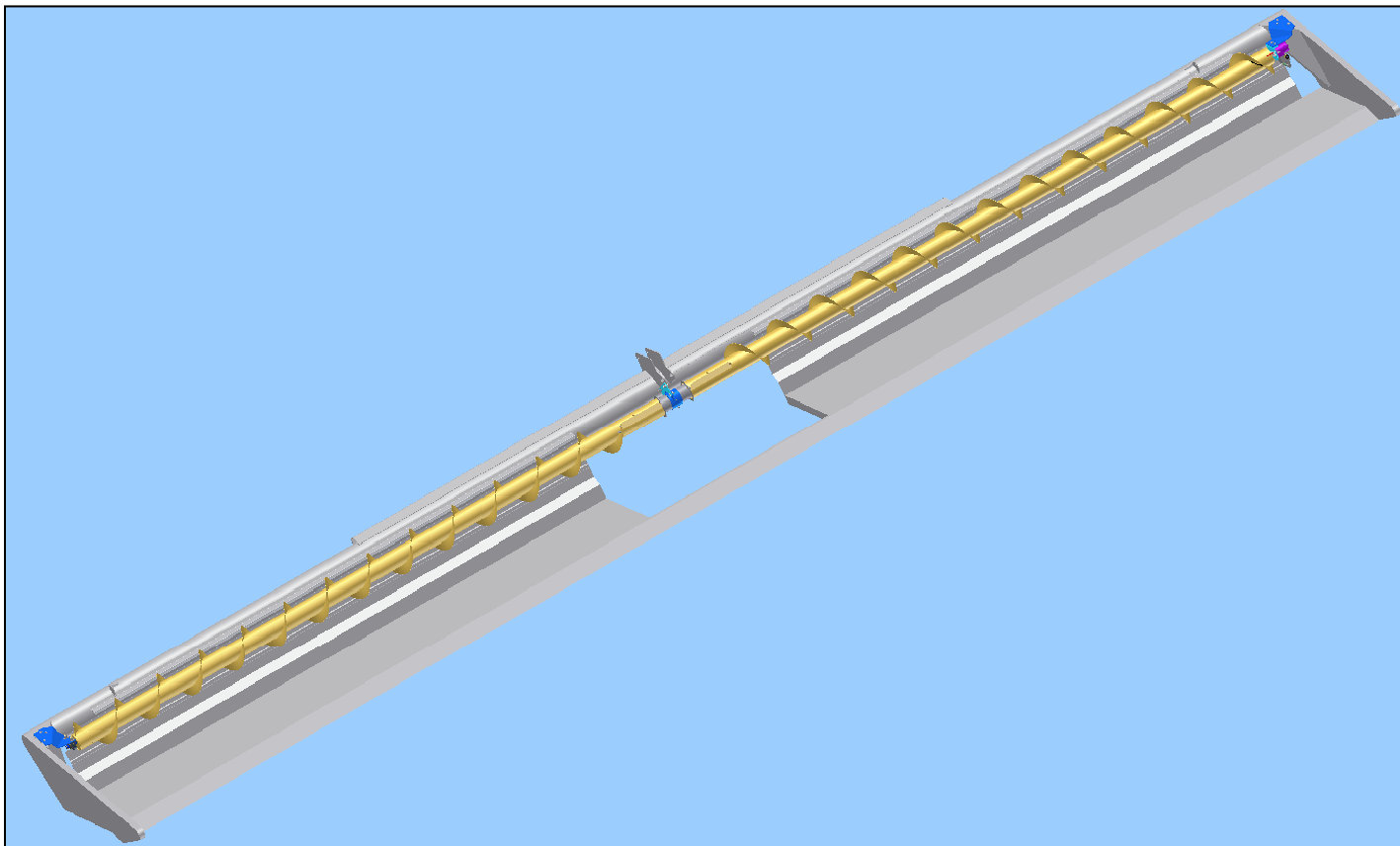
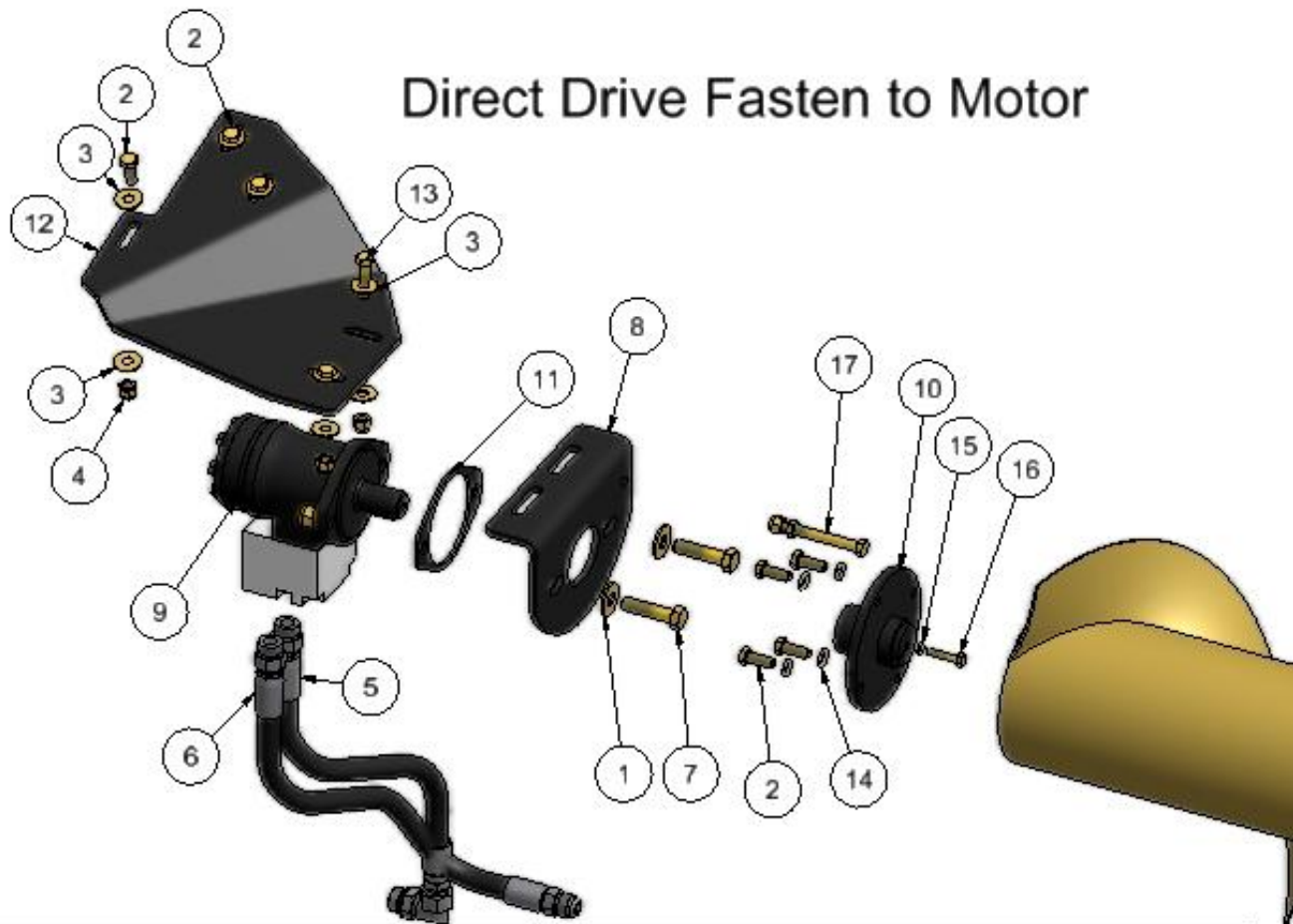


FIGURE 1 FD70 35 FT AND 40 FT HEADER OVERVIEW WITH ASM CROSS AUGER INSTALLED

1. Bolt on left hand motor mount plate.

## Direct Drive Fasten to Motor



ITEM	QTY	PART NUMBER	ITEM	QTY	PART NUMBER
1	14	101106 flat washer 1/2"	10	1	407105 direct drive motor adapter wldt
2	10	100602 bolt 3-8 X 1 gr5 pltd nc	11	1	407271 shim hyd motor mt AGCO 9250
3	16	101105 flat washer 3/8"	12	1	408292 MD974 Mnt Mtr end DirDrv
4	9	102123 nut nylok 3/8" nc gr5 pltd	13	2	100604 bolt 3-8 X 1 1-2 gr5 pltd nc
5	1	406199 MD974 Hose08 16in 10MORB x 08FJIC	14	4	101145 lock washer 3/8"
6	1	406200 MD974 Hose08 16in 10MORB x 10MJIC	15	1	101144 lock washer 1/4
7	4	100703 bolt 1-2 X 2 gr5 pltd nc	16	1	100404 bolt 1-4 X 1 1-4 nc
8	1	408111 hyd motor mt macdon dirdrv	17	1	100610 bolt 3-8 X 3 gr5 pltd nc
9	1	117170 motor with flow control 5.9 danfoss			

- 1) Check that the keystone is in the motor shaft
- 2) Insert the motor into the direct drive spindle until the base of motor shaft is tight against the direct drive spindle.
- 3) Insert the 1/4" draw bolt and 1/4" lock washer into the drive spindle, and align with the hole in motor
- 4) Tighten to 15 lb-foot of torque
- 5) Place the direct drive spindle into the end of auger
- 6) Secure with the 3/8 x 1 bolts and 3/8 lock washers

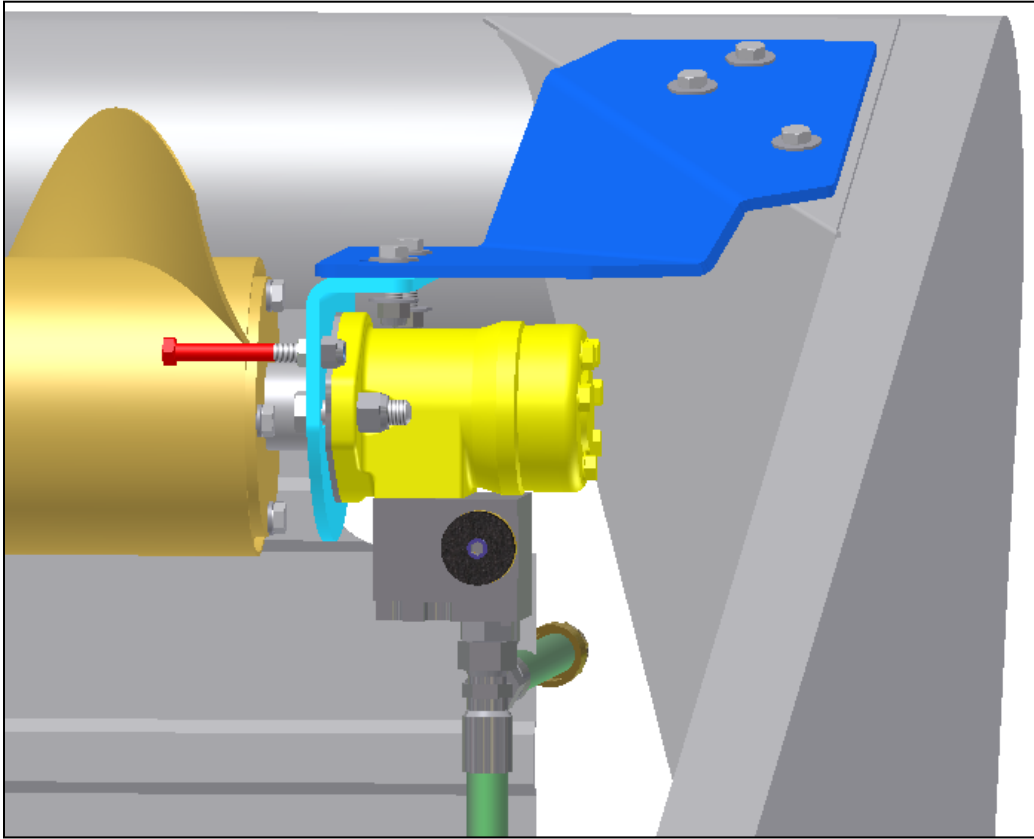


FIGURE 2 LH END FRONT VIEW MACDON D50 - 60 KIT'S # 405865, 405866, 405867

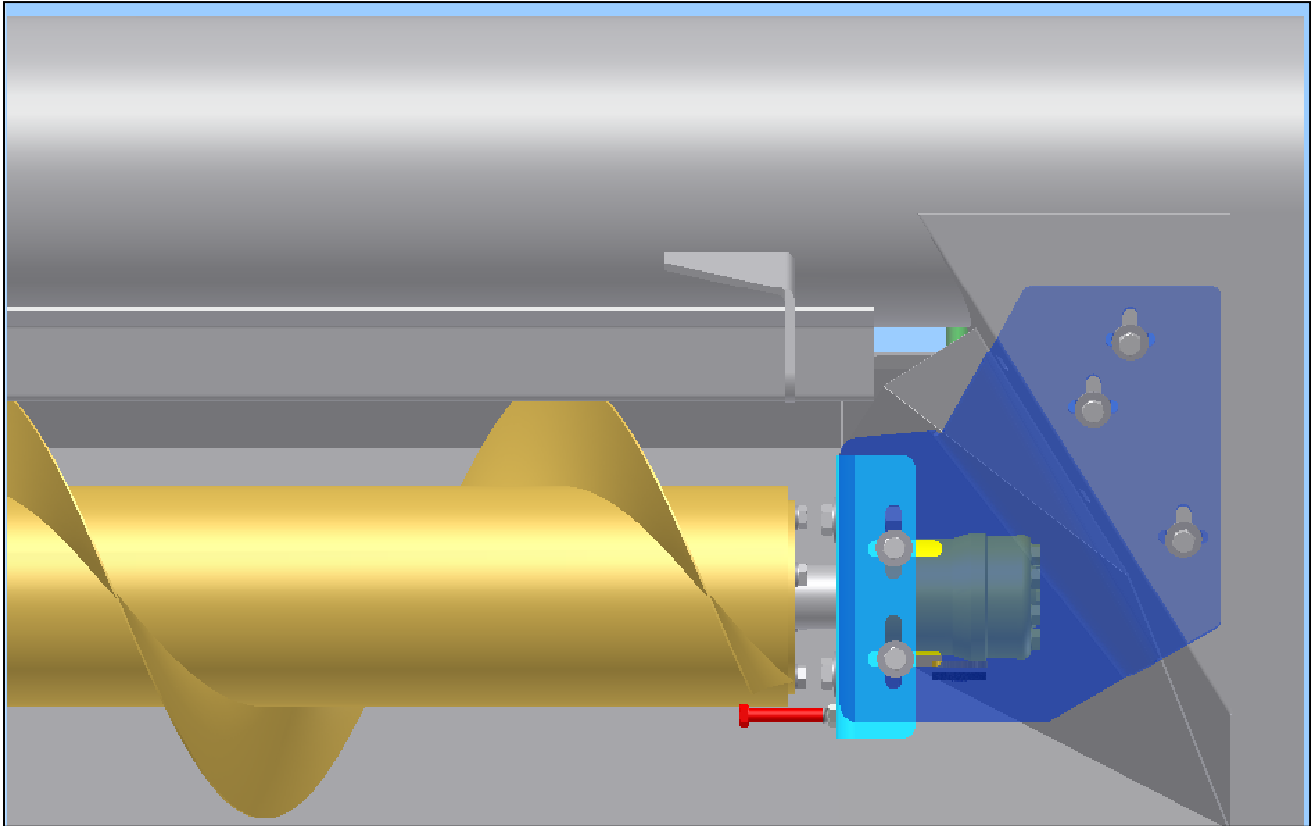
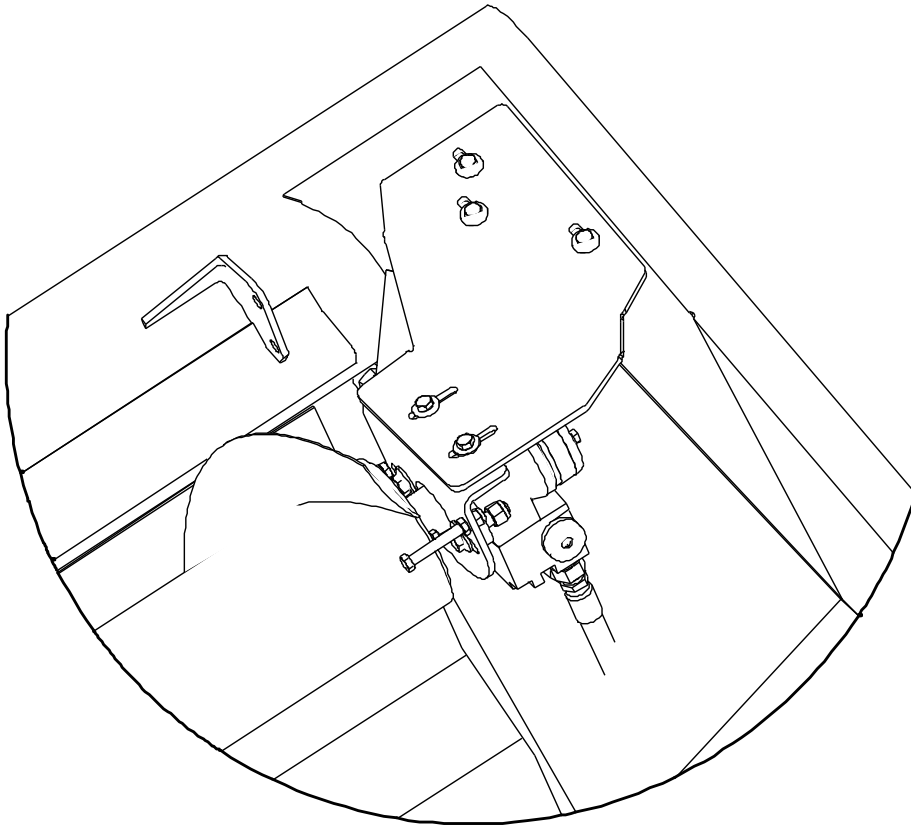


FIGURE 3 TOP VIEW OF LEFT END MOUNT



Note the **stop bolt** is used to completely stop the auger from turning IF you have a reason. The normal position is to have the **stop bolt** stored on the motor side of the blue mounting bracket.

To use the **stop bolt** - install the bolt into the path of the rotating auger as show, and then completely open the bypass adjusting valve so that excessive back pressure is not built up in the canvas circuit.

FIGURE 4 STOP BOLT INSTRUCTIONS FOR FIELD USE

2. Bolt the center mount directly on the right side of the 2 holes on the reel cylinder mount. The mount should have the bearing, and square telescoping shafts mounted inside the center hanger. To put augers in place, slide the square end of the auger over the square shaft, and lift the outer ends into place.

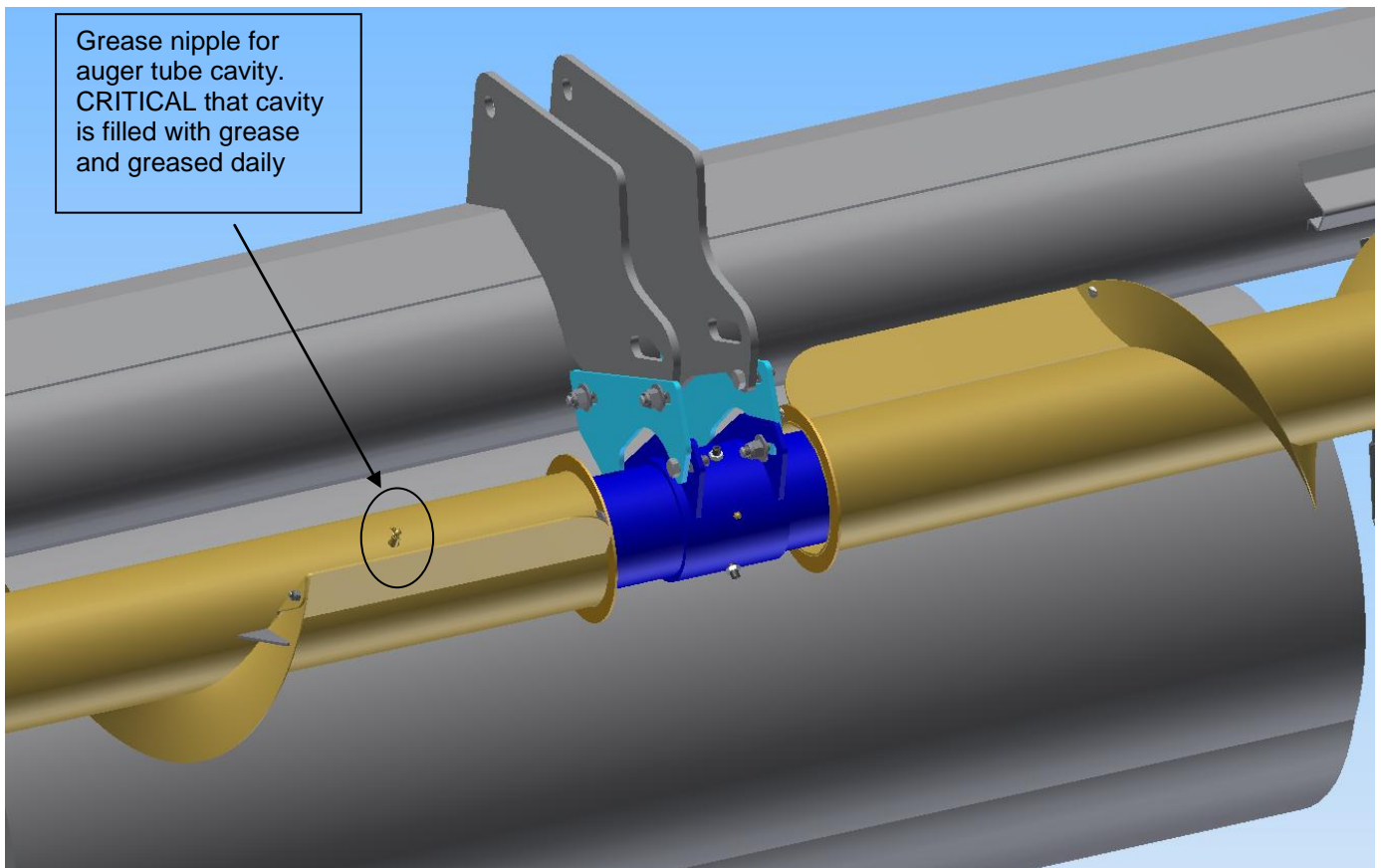


FIGURE 5 CENTER MOUNT ADAPTER (LIGHT BLUE) AND BEARING MOUNT (DARK BLUE)

3. Identify the left auger by the part numbers listed - and the number sticker on the center end of the auger. Note that the flighting will move material toward center when turning down on the forward edge of the auger. The 12 inch removable paddle goes to the center of header. With the motor, motor mounts, sprockets and bearing flanges on the end lift the left auger into position. Bolt loosely into place. Position the auger  $\frac{1}{4}$ " or less from the back edge of header. Tighten the bearing mount bolts the header acts as the stripper that prevents crop from wrapping around the auger. Adjusting closer than  $\frac{1}{4}$ " is better, but usually unnecessary.
4. BE SURE TO ROTATE AUGER BY HAND BEFORE APPLYING ANY HYDRAULIC FLOW, TO ENSURE AUGER HAS CLEARANCE FROM BACK BOARD.
5. **CRITICAL: NEED TO GREASE THE AUGER TUBE TO FILL THE CAVITY THAT THE SQUARE SHAFT SLIDES THROUGH 6 OZ OF GREASE PER AUGER . ON THE LH AND RH AUGER. AS WELL AS THE CENTER BEARING RACE.**
6. ENSURE THAT THE U JOINT IS ON THE RH SIDE OF THE HEADER, THE LONG SQUARE SHAFT IS USED IN THE LH AUGER.

7. Bolt on the right hand end mount.

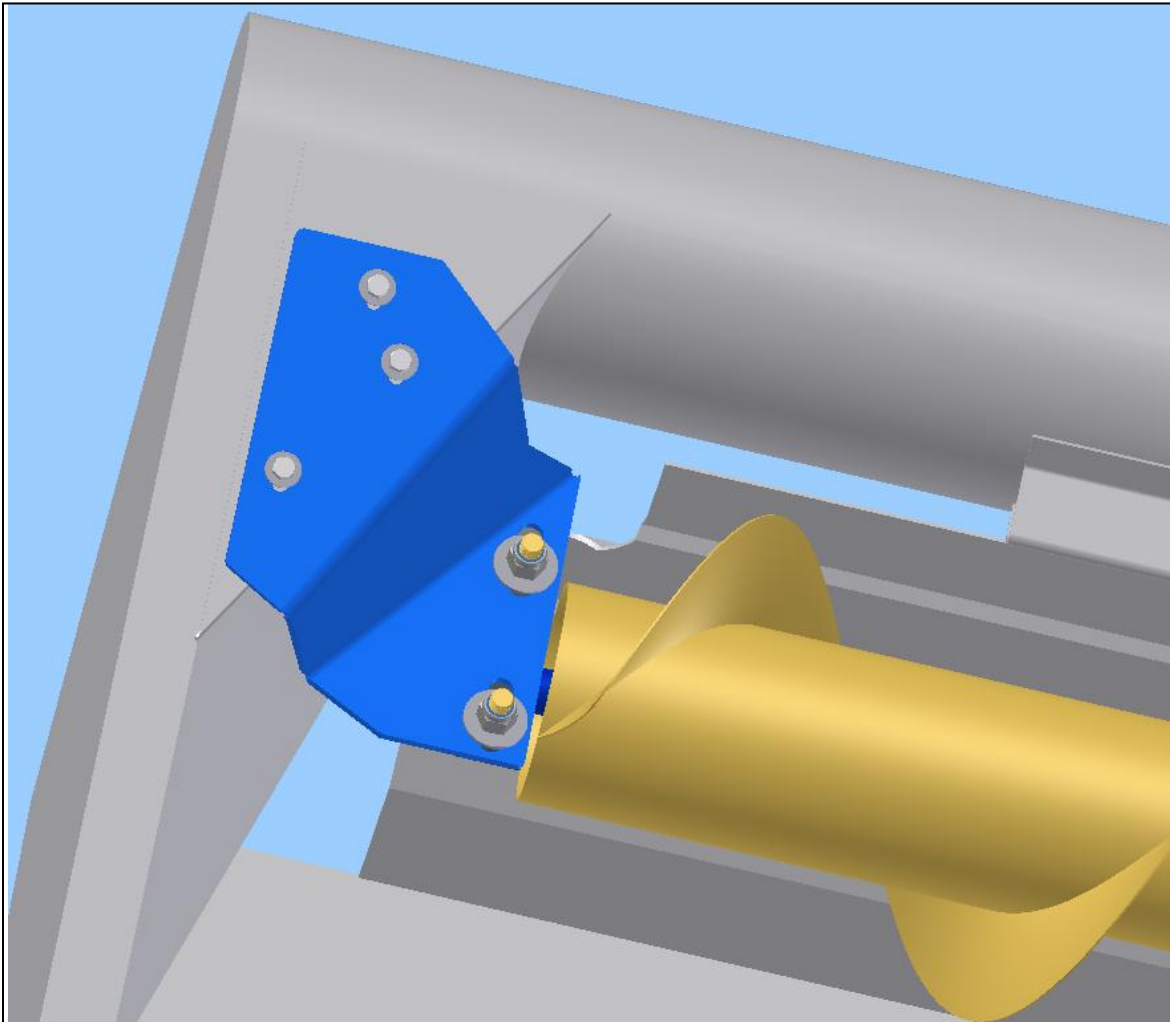


FIGURE 6 RIGHT END MOUNT MACDON 35-45 FT FD70 HEADER KIT'S # 405868, 405869, 4058725

8. Identify the right auger from the chart of part numbers, and the flighting will move material toward center turn down on the forward edge of the auger. The 12 inch long removable paddle goes to the center of header. Lift the right auger into place with the bearings and sprockets on the auger. Snug the bolts down, **making sure that there is 1/4" of clearance between the rear of header, and the auger flighting.**
9. **Be sure to adjust the center mount forward and aft, Depending on what center drum attachment is on the unit.**
10. **Raise the center drum on the header as high as it will go, with the header tilted back, and check for clearance between the auger and the drum fingers.**
11. **Adjust the auger accordingly to have clearance between the auger flighting and paddle vs. the drum and fingers. Refer to page 18 for slot positions.**





Grease gun shown on auger at the center end. Critical that the cavity is filled with 6 OZ of grease. Grease the auger after it is installed onto the center section and the shafts are through the auger.



Image showing a full 14 oz tube length on the handle.

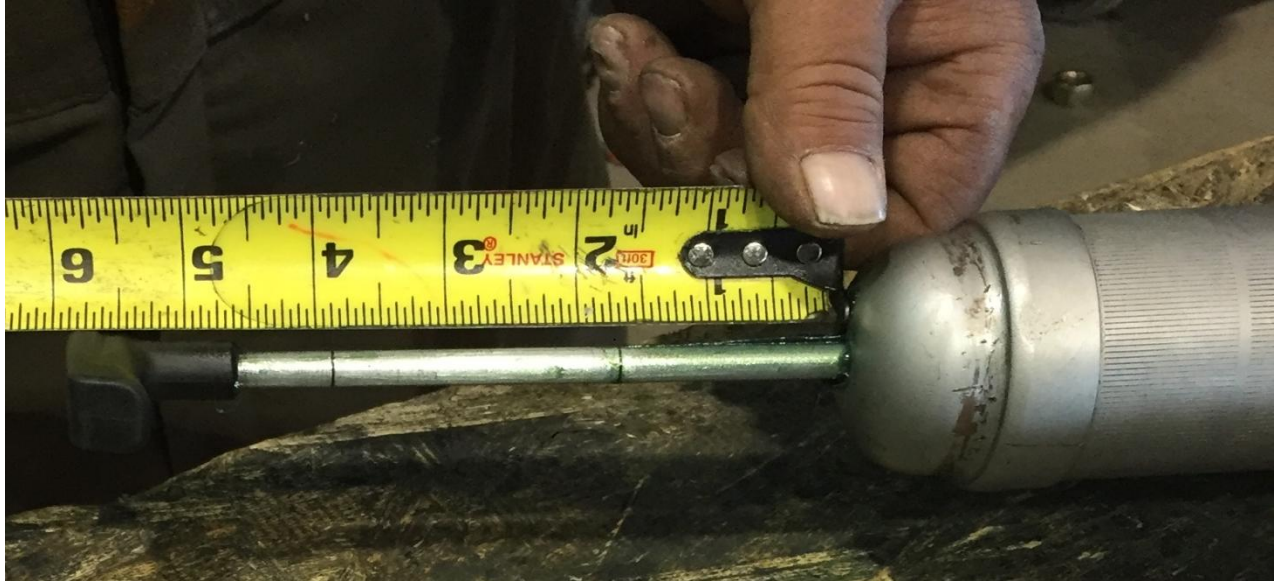


Image showing length of handle after 6 OZ of grease has been pumped.

7-7/8" for a full length 14 OZ grease tube.

4-5/8" for Grease tube with 6 OZ pumped out.



## 4.1. HYDRAULIC INSTALLATION

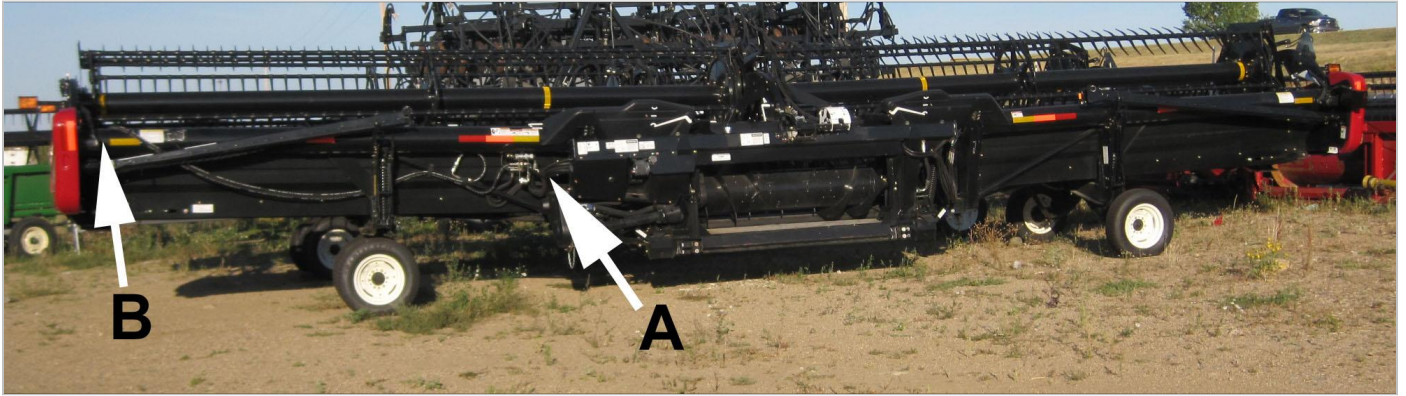


FIGURE 7 2011 HYDRAULIC HOSES ON FD70 / CASE 2162

The auger drive pressure hose runs from the return line from the right hand canvas drive motor **at A** to the Ag Shield auger motor **at B** – and the return hose runs from the forward port of the motor back to the fitting to which the canvas motor was originally attached. The hoses extend the series loop of motors by one additional motor.

12. Refer to the parts manual page section 6:3 for reference. Install the hydraulic hoses as follows:
13. Disconnect hoses end “A” from the fitting “B” The pressure hose “A” comes from the return line from the right hand canvas motor
14. Connect the Ag Shield Pressure hose to the hose end A,
15. Connect the other end of pressure hose to the rear port of the motor. (The oil will take the long way around the motor , and exit out the front port of motor)
16. Connect the Ag Shield “Return ‘ hose to forward port of motor
17. Connect the other end of the return hoses to the fitting B in photo above, the right hand canvas motor return is shown in picture. The return hose comes from the forward port of Ag Shield cross auger motor, and returns to the #12 JIC male tee left open at B
18. Test direction of rotation to be down on the front of the auger, and set speed of the reel, and use the flow control supplied to set the auger speed to be 5% or slightly greater than the canvases- see Operations Section 5 for more info

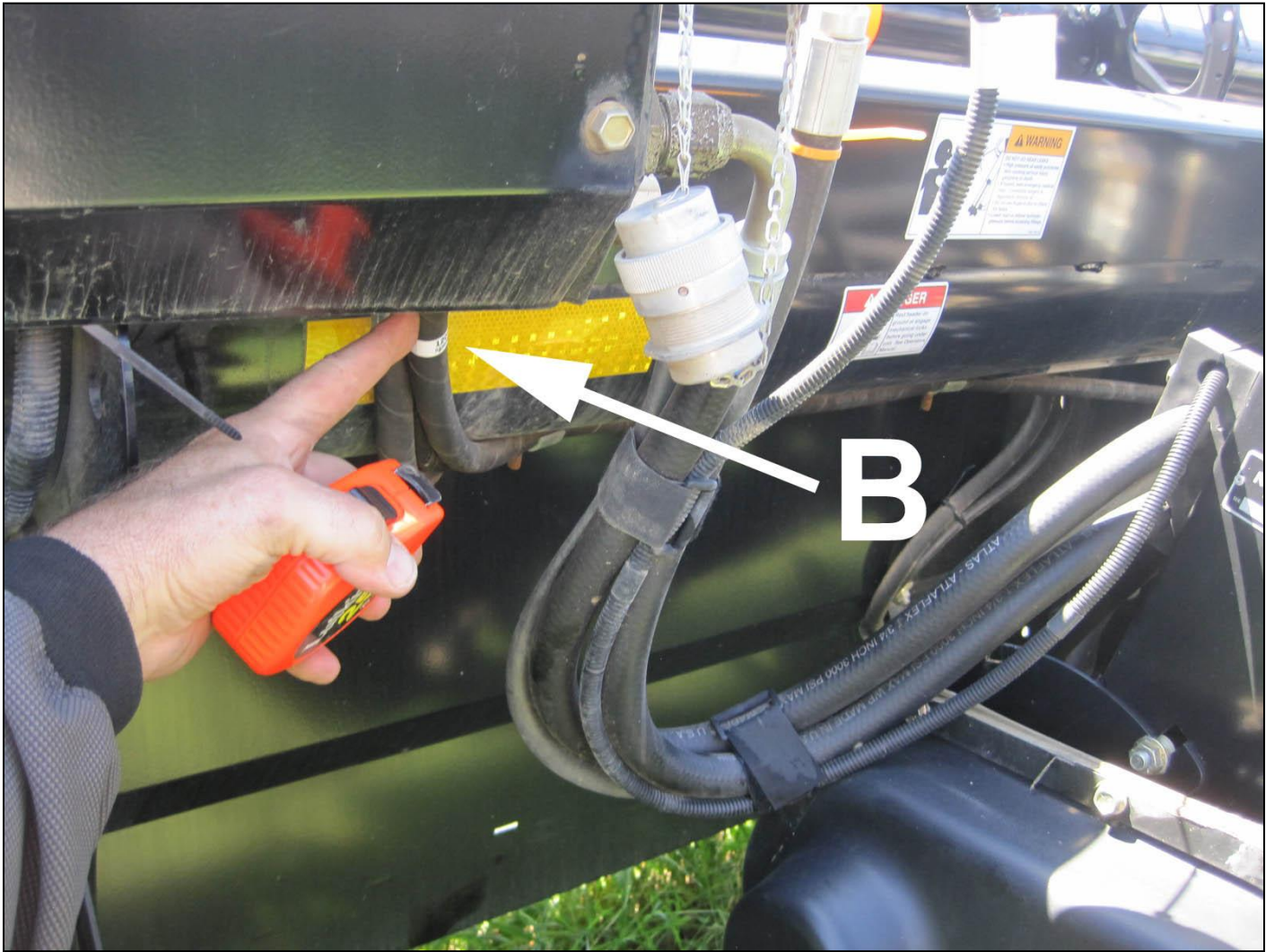


FIGURE 8 CANVAS RETURN HOSE LEFT SIDE OF CENTER

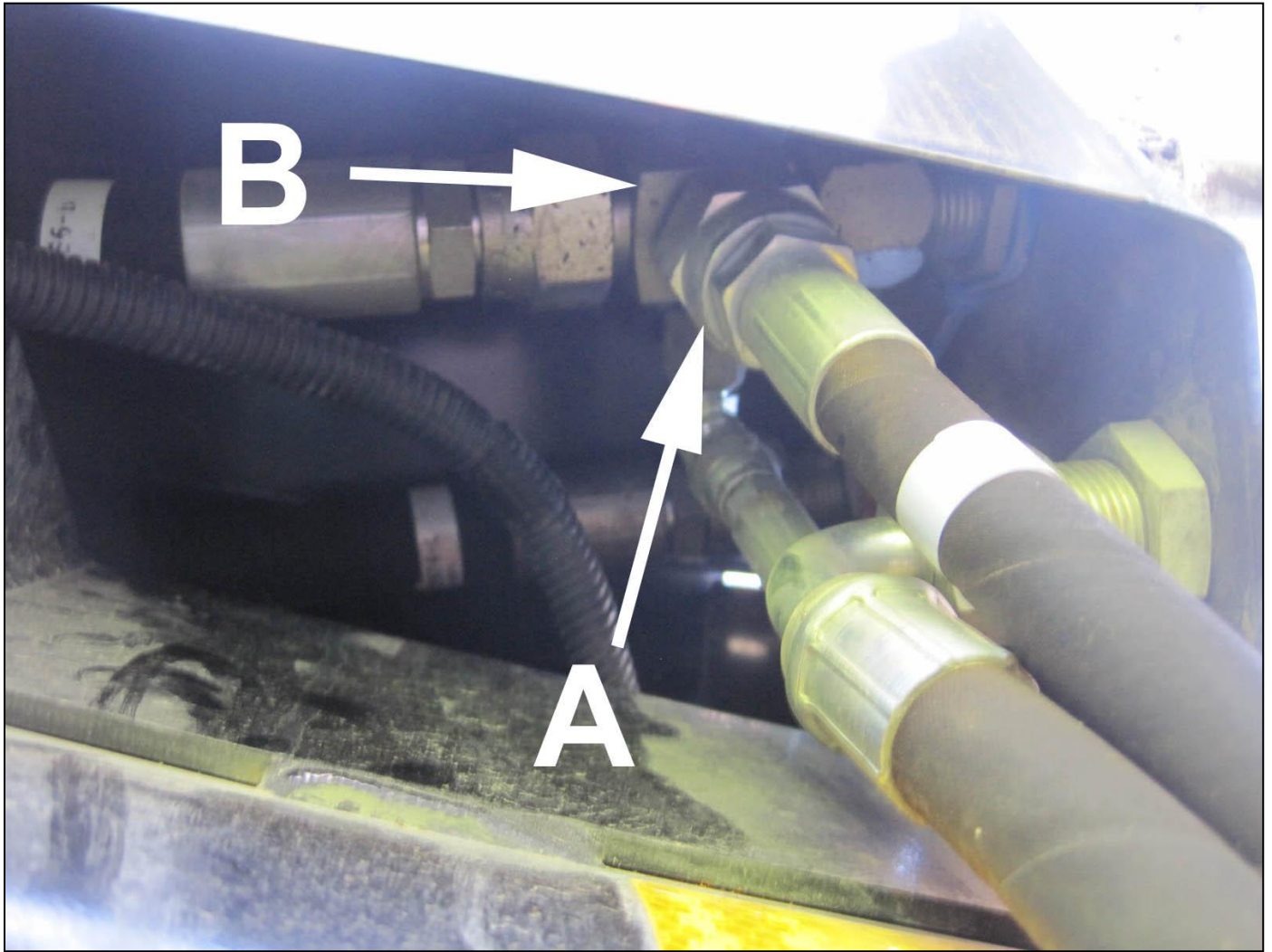
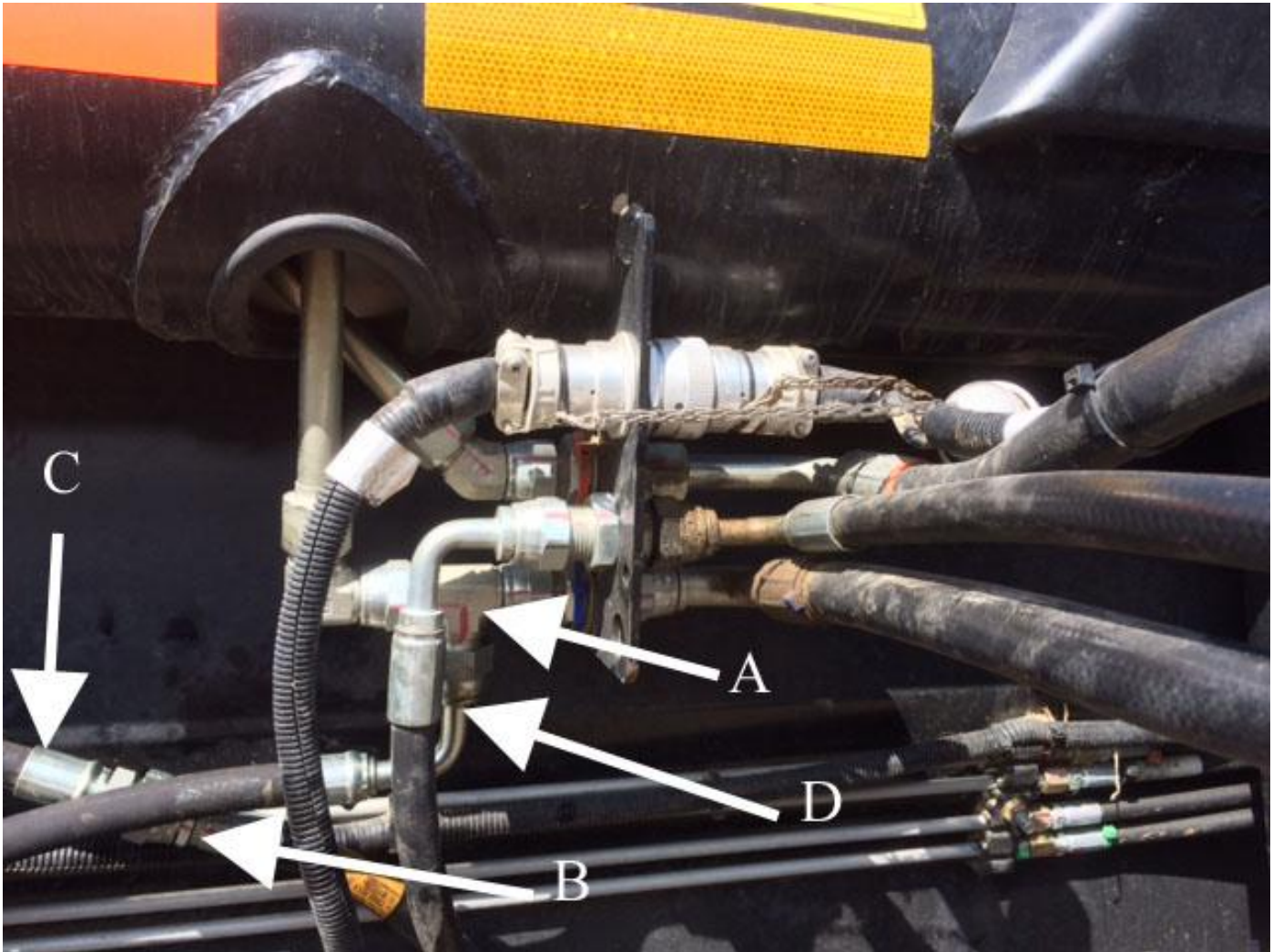


FIGURE 9 HOSE ATTACHMENT FROM BOTTOM UP



## 4.2. HYDRAULIC MOTOR HOSE INSTALL



1. Remove hose (B) from the bottom of the T (A)
2. Connect Hose (C) to hose (B) and route to Port B on the AgShield auger motor.
3. From Port A on Ag shield motor connect the hose to the bottom of the T (D)

### 4.3. STRIPPER BAR INSTALLATION

- 1) All Ag Shield augers now come with a stripper bar to help prevent crop from wrapping on the auger, as well as to provide a cleaner transfer of crop to the center of the header.
- 2) Put the stripper bar on last after the auger has been installed and tested. This will ensure the height of the auger does not change after the stripper bar height has been set.

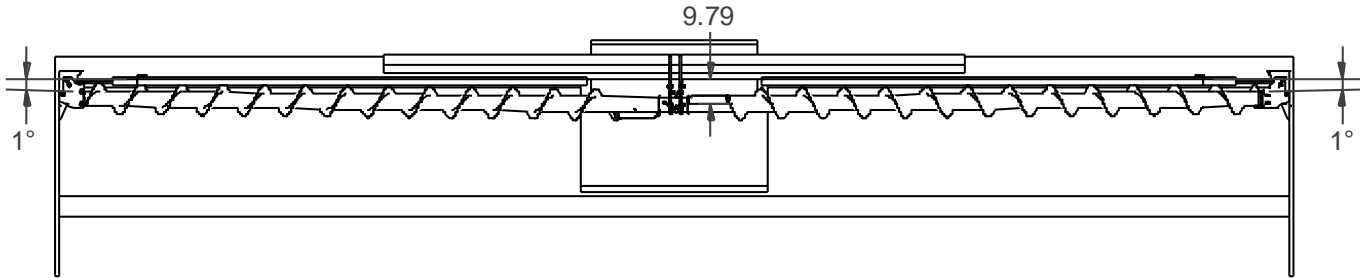


- 3) Hold stripper bar up to the back board and mark the holes in the middle of the slot (every second hole will be fine)
- 4) A magnet will help hold one end if installing alone.
- 5) Make sure before drilling that the drill will not damage anything behind the back board (hyd fittings hoses etc)
- 6) Drill 3/8" holes in the middle of the slot in the back board.
- 7) Set the stripper bar to be 1/4" below the flighting.
- 8) Tighten the stripper bar to the back board.

#### 4.4. CENTER BOLT ON EAR SLOT POSITION

### MD FD 70/75 Slot Position

MD FD 70/75 slots in forward position

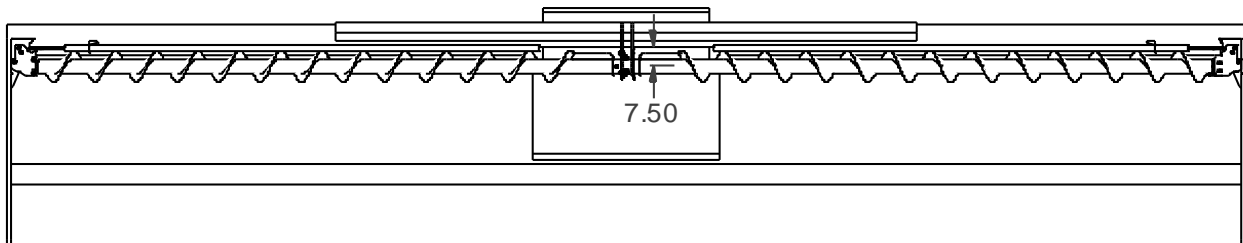


macdon FD 70/75 with forward center position and rear center position gain 2.29" when slots are in forward position.

lose .02" of gap in the center overlap.

1.7" of clearance to the drum from the edge of the paddle when slots are in forward position.

MD FD 70/75 40 FT slots in rear position



## 5. OPERATIONS



### DANGER

Stay clear of auger whenever it is running

#### 5.1. FIELD SETTING THE CROSS AUGER

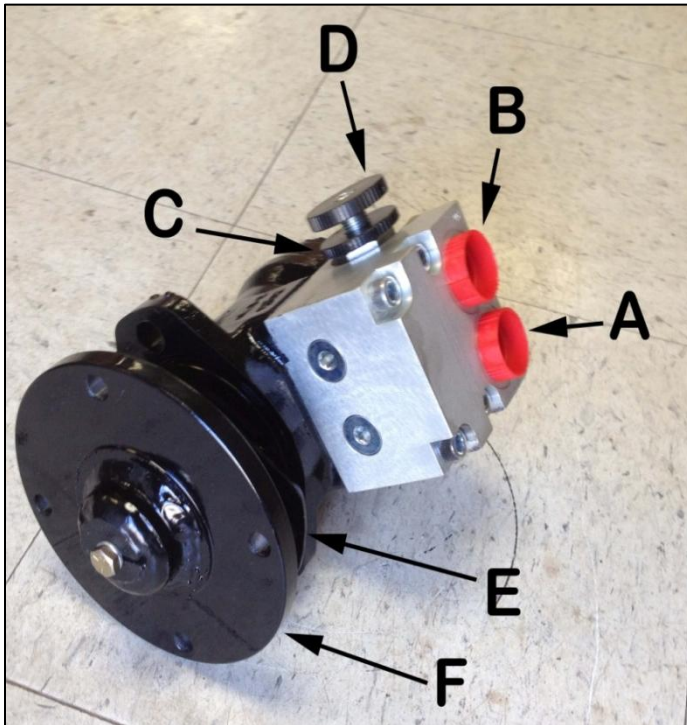


FIGURE 10 SAUER MOTOR SPEED CONTROL

#### Terminology

- A: Return or tank line
- B: Pressure line
- C: Lock wheel
- D: Auger speed adjustment
- E: Shim for hydraulic motor mount
- F: Direct driver motor adapter

Cross augers can only be adjusted for speed of rotation. In many conditions, the correct speed for many crops would be to have the flighting advancing the crop along the canvas 5% or slightly faster than the canvas speed. To increase auger speed, loosen lock wheel A counterclockwise, rotate adjust valve C clockwise, relock the valve by turning A clockwise. Closing this valve reduces the bypass of oil around the hydraulic motor. To slow down the rpm of the auger, rotate adjust valve D counterclockwise.

Observe the auger from the combine cab or swather operating platform. Focus your eye on one auger flighting and compare to a particular canvas slat. The auger can be adjusted to run at the same rate in feet per minute. As desired, slightly increase the cross auger to have it pulling ahead faster than the canvas.

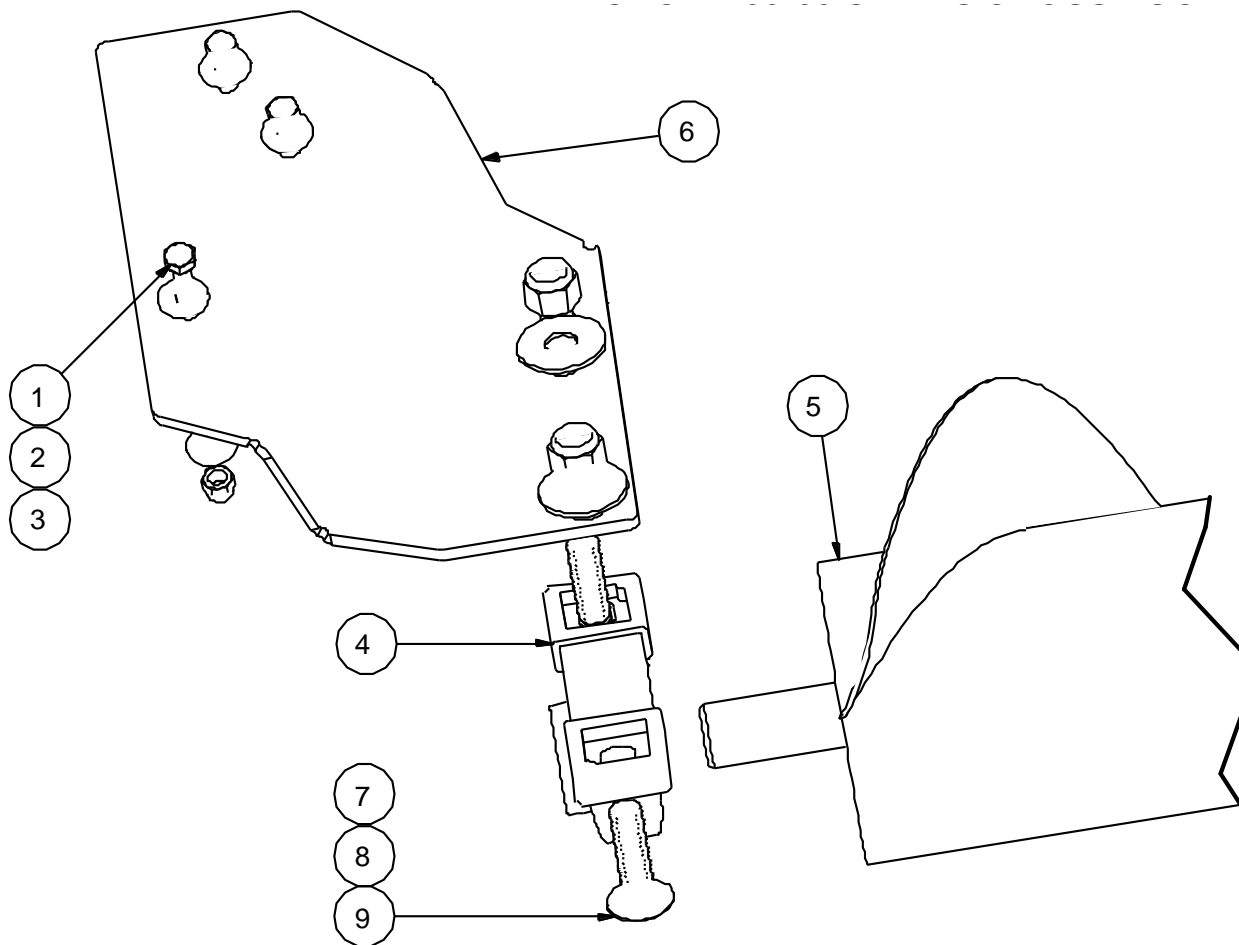
In peas, augers can often be operated at a very slow speed--- 30% of canvas speed, and still feed as much crop into combine. When augers turn slower, there are fewer tendencies to wrap.

If wrapping occurs at the center of the header, try removing one or both of the bolts on paddles – In some conditions the paddles are an advantage, in some conditions the paddles are a disadvantage.



## 6. CROSS AUGER PARTS FOR MACDON FD70 35 FT, 40 - 45 ft MODELS

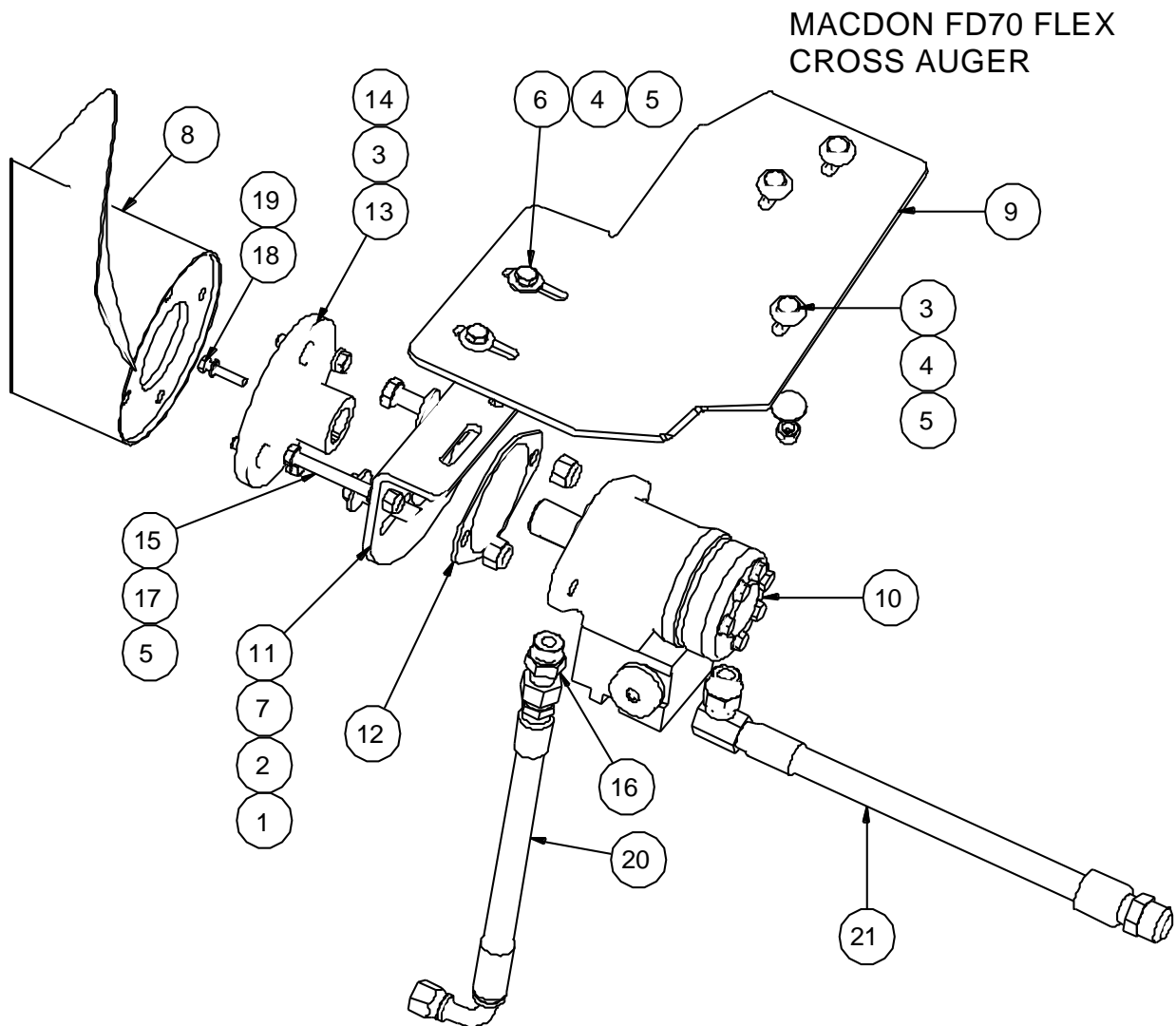
### 6.1. RIGHT END MOUNT



ITEM	QTY	PART NUMBER	ITEM	QTY	PART NUMBER
1	10	100602 bolt 3-8 X 1 gr5 pltd nc	6	1	408125 MacDon RH end plate 50-60-70
2	16	101105 flat washer 3/8"	7	2	101107 flat washer 5/8"
3	9	102123 nut nylok 3/8" nc gr5 pltd	8	2	102127 nut nylok 5/8" nc gr5 pltd
4	1	114471 Pillow Block Bearing Assy P207-SA207	9	2	100965 carriage bolt 5/8" X 2-1/4" nc
5	1	407000 MD FD70 35ft Auger Wldmt RH			



## 6.2. LEFT HAND END DIRECT DRIVE MOTOR AND MOUNT



ITEM	QTY	PART NUMBER	ITEM	QTY	PART NUMBER
1	6	102125 nut nylok 1/2" nc gr5 pltd	12	1	407271 shim hyd motor mt AGCO 9250
2	10	101106 flat washer 1/2"	13	1	407105 direct drive motor adapter wldt
3	10	100602 bolt 3-8 X 1 gr5 pltd nc	14	4	101145 lock washer 3/8"
4	16	101105 flat washer 3/8"	15	1	100641 bolt 3-8 X 3 gr8 pltd nf
5	9	102123 nut nylok 3/8" nc gr5 pltd	16	1	117984 ADAPTER STR 10MORB X 08 MJIC
6	2	100603 bolt 3-8 X 1 1-4 gr5 pltd nc	17	1	102131 nut jam 3-8 nc gr5 1-2 HGT
7	2	100703 bolt 1-2 X 2 gr5 pltd nc	18	1	100404 HEX HD BOLTS 1 4 NC X 1 1 4
8	1	408209 MD FD70 35 ft auger wldt LH dirdrv	19	1	101144 washer lock 1/4
9	1	408114 mt Macdon D50-60-70 dirdrv motor	20	1	118831 hose 08 138 12FJICS90 x 08FJIC
10	1	117170 motor with flow control 5.9 danfoss	21	1	118836 hyd hose 08 134in x 12MJIC x 08MORB90
11	1	408111 hyd motor mt macdon dirdrv			

### 6.3. CENTER FLEX ASSEMBLY AND MOUNT

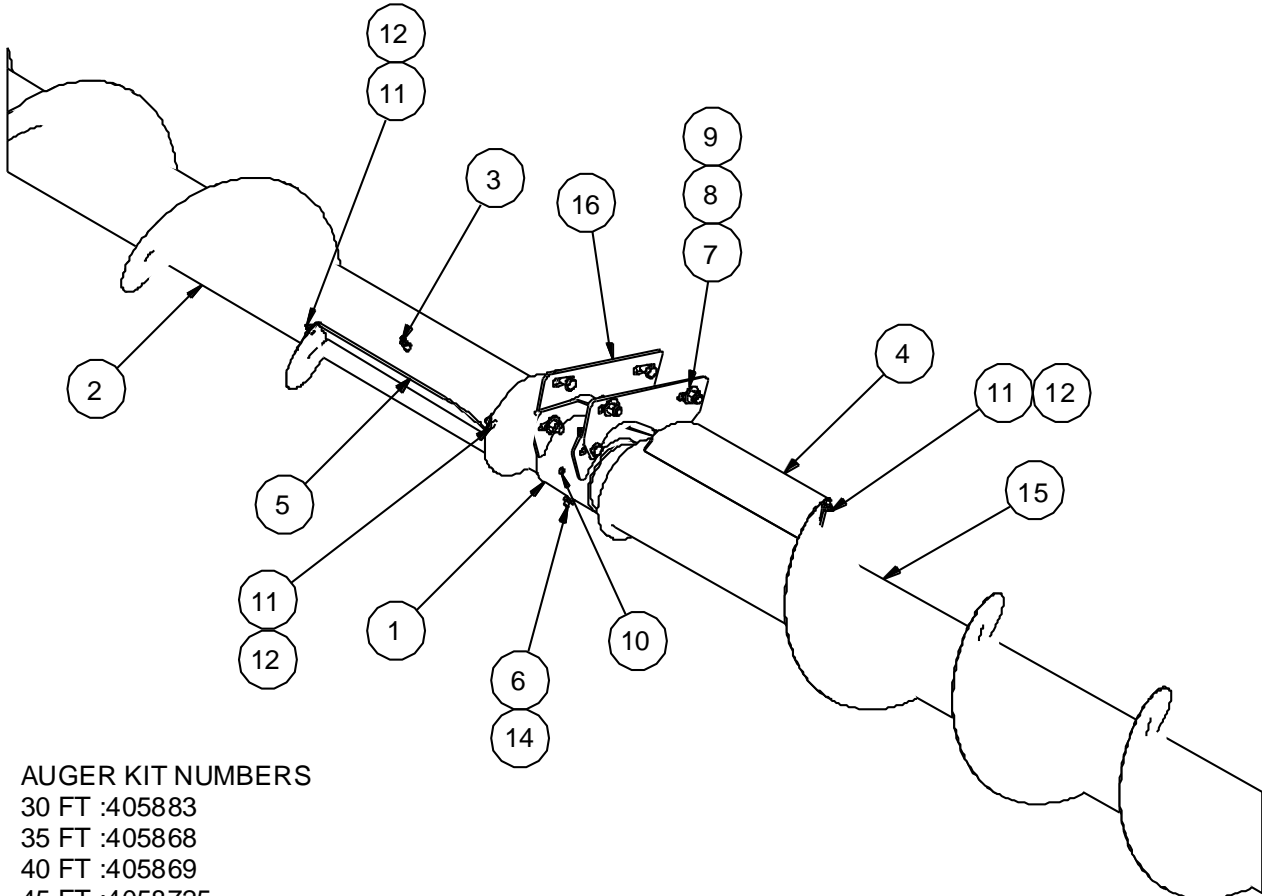
## Center Flex parts

TYPICAL PARTS ON

MD FD 70/75

\*40-45 FT SHOWN\*

\*30-35 FT USE 406405 INSTEAD OF 406491\*



#### AUGER KIT NUMBERS

30 FT :405883

35 FT :405868

40 FT :405869

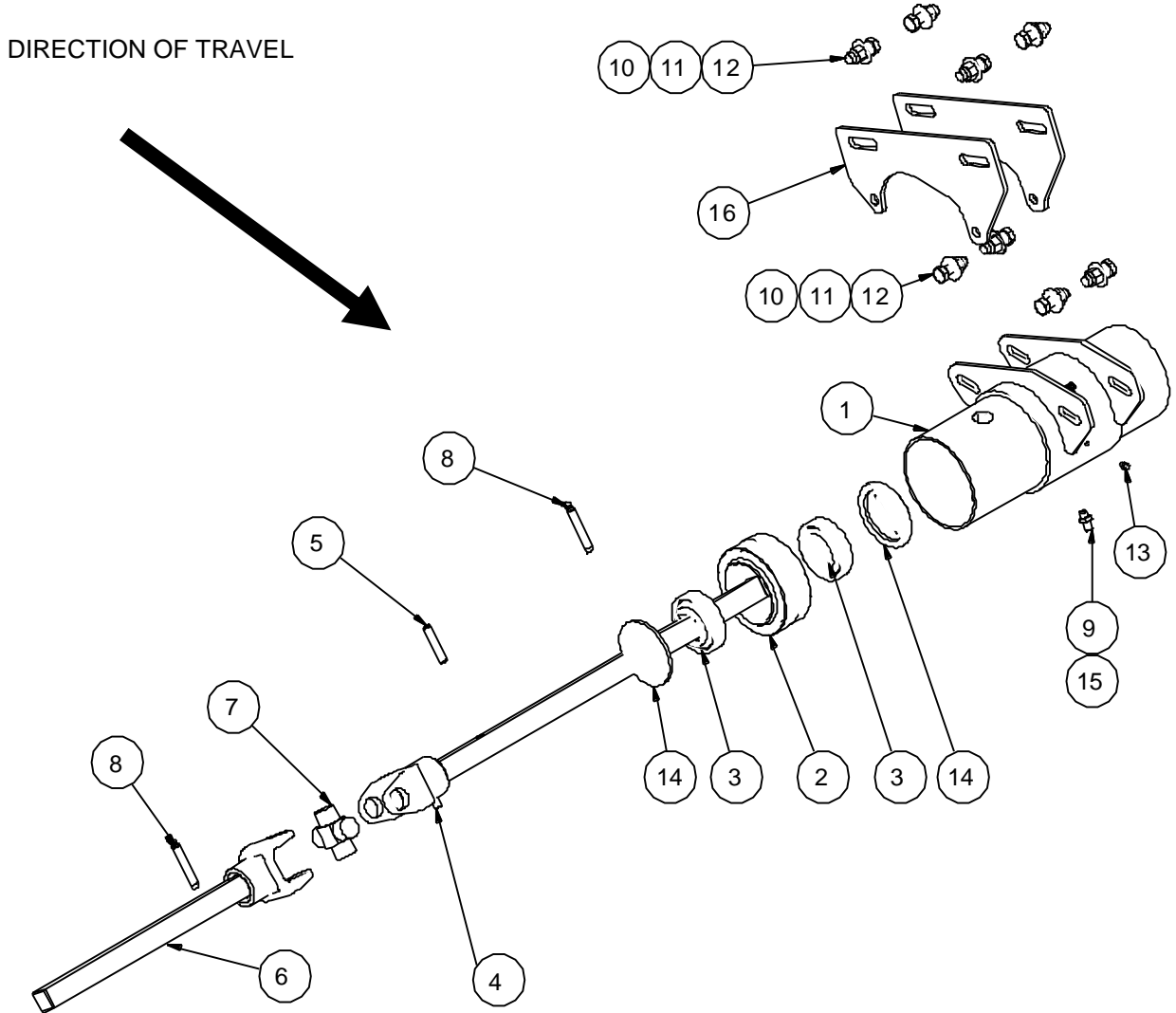
45 FT :4058725

1	1	406491 MD FD70 75 45FT Center Bearing Mount Wldmt	9	8	100702 bolt 1-2 X 1 1-2 gr5 pltd nc
2	1	406399 MD FD70 40ft Auger Wldmt RH	10	1	105602 grease nipple 1 4 x28 nf str
3	2	zerk grease nipple 1 8 PTF -- 1649-B Alemite	11	4	100966 Carriage Bolt 1-4 X 3-4 NC
4	1	406175 MD974 Paddle Wldmt LH	12	4	102121 nut nylok 1/4" nc gr5 pltd
5	1	406174 MD974 Paddle Wldmt RH	13	2	100703 bolt 1-2 X 2 gr5 pltd nc
6	3	105105 Set Screw 3-8 x 1 in	14	4	102131 nut jam 3-8 nc gr5 1-2 HGT
7	10	101106 flat washer 1/2"	15	1	408212 MD FD70 40ft Auger Wldmt LH dirdrv
8	10	102125 nut nylok 1/2" nc gr5 pltd	16	2	406408 adjustable slots MD FD70 Center Mount Adapter Plate

## 6.4. INTERNAL PARTS CENTER FLEX ASSEMBLY 30-35 FT

THIS VIEW IS FROM THE FRONT LOOKING AT THE HEADER.

### Macdon FD 70/75 Center mount 30-35FT



ITEM	QTY	PART NUMBER	ITEM	QTY	PART NUMBER
1	1	406405 MD FD70 Center Bearing Mount Wldmt	9	3	105105 Set Screw 3-8 x 1 in
2	1	111983 Bearing Plain Spherical GE 80 ES 2RS - outer	10	10	101106 flat washer 1/2"
3	2	111982 bearing 80mm x 1-1_8 sqr RBL W208PP5	11	10	102125 nut nylok 1/2" nc gr5 pltd
4	1	406180 Yoke Shaft Wldmt LH	12	8	100702 bolt 1-2 X 1 1-2 gr5 pltd nc
5	1	103304 spring pin 3/8"x2" lg	13	1	105602 grease nipple 1 4 x28 nf str
6	1	406179 MD 974 Yoke Shaft Wldmt RH	14	2	406196 MD974 Bearing Retainer Wldmt
7	1	111981 u-joint bearing WSL 200-1200	15	4	102131 nut jam 3-8 nc gr5 1-2 HGT
8	2	zerk grease nipple 1 8 PTF -- 1649-B Alemite	16	2	406408 MD FD70 Center Mount Adapter Plate

\*\*\*40 and 45 FT have a different center Mount 406491\*\*\* Long square shaft goes the LH side of header  
**WHEN SITTING IN THE CAB OF THE COMBINE, THE U JOINT MUST BE ON THE RH SIDE OF THE CENTER MOUNT BRACKET**

PAGE INTENTIONALLY LEFT BLANK

## 7. WARRANTY

1. Ag Shield Manufacturing warrants each new Ag Shield cross auger to be free from factory defects in material and workmanship under normal use and service, when set up and operated in accordance with factory instructions for one year from the date of delivery to the original purchaser.
2. Ag Shield's obligation under this warranty is limited to the supplying of replacement parts which are defective due to factory workmanship or material.
3. Your Ag Shield Dealer is responsible for providing warranty labour. Credit for required labour is specifically agreed to on an individual case basis.
4. The warranty is void on any unit which has been tampered with, or modified in any way not authorized in writing by the factory.
5. This warranty is void on any unit which is subject to misuse, negligence or accident, or which has had the serial number tampered or removed.
6. A "Warranty Claim Form" (sample at end of handbook) must be submitted to Ag Shield with returned parts in order for parts to be considered for warranty examination.
7. A warranty registration page from the front of this manual must be returned to the factory in order to qualify for warranty examination.
8. All returned parts must be sent to the factory freight prepaid, and warranty parts will be returned to you freight collect.
9. Replacement parts shipped pending receipt of parts for examination will be invoiced, and remain on your account until such time as examination indicates that a credit for those parts be issued or that payment is due.
10. Parts not returned for warranty examination within 30 days must be paid for at that time. Ag Shield will immediately reimburse any cash paid for items that are later determined defective.
11. Warranty terms and conditions are subject to provincial and state legislation.



WARRANTY CLAIM FORM

Dealer		
Address		
City	State/Province	Zip/Postal

**Ag Shield Mfg**  
 Box 9, Benito,  
 MB, R0L 0C0  
 ph 800-561-0132  
 fax 204-539-2130  
 ph 204-539-2000i

End User		
Address		
City	State/Province	

DATE OF SALE	DATE FAILED	REPAIR DATE	ACRES/HOURS	MODEL	SERIAL NUMBER
--------------	-------------	-------------	-------------	-------	---------------

LABOUR HOURS	LABOUR RATE	LABOUR AMOUNT	PARTS MUST BE RETURNED TO BENITO MB FREIGHT PREPAID TO BE CONSIDERED FOR WARRANTY. DATE SHIPPED		
--------------	-------------	---------------	---	--	--

QUANTITY ITEM	PART NUMBER	DESCRIPTION	PRICE EACH	TOTAL PRICE	DESCRIBE THE CAUSE OF FAILURE AND CORRECTIVE ACTION TAKEN	APPROVE /REJECT
1						
2						
3						
4						
5						
6						
7						
8						

I CERTIFY THAT THE INFORMATION IS ACCURATE AND THAT THE PARTS WERE REPLACED ON THE MACHINE	PARTS	DATE PARTS RECD	RECD BY
	LABOUR	ITEMS TO SUPPLIERS	
	TOTAL		

SHADED AREAS AG SHIELD USE ONLY ---PLEASE ADD DETAILS FOR ITEM NUMBERS ON BACK

