

AG SHIELD



12" Cross Auger for MacDon Flex headers
30ft 974- asm part # 405884
36ft 974- asm part # 405881
OPERATOR'S HANDBOOK AND PARTS MANUAL

Ag Shield Manufacturing
Box 9, Benito, Manitoba R0L 0C0
phone 800-561-0132 or 204-539-2000
fax 204-539-2130
e-mail address sales@agshield.com
Please visit web site at <http://www.agshield.com>
Printed in Canada August 7 2015

REV 2

-Part No 405906a

WARRANTY REGISTRATION-YIELD SHIELD

RETURN TO



AG SHIELD MANUFACTURING

BOX 9, BENITO, MB, R0L 0C0

PHONE 800-561-0132 or 204-539-2000 FAX 204-539-2130

mail sales @agshield.com

e-

This form must be filled out by the dealer(if applicable) and signed by both the dealer and customer at the time of delivery, and returned to Ag Shield within 10 days to validate warranty.

Customer _____

Dealer _____

Address _____

Address _____

City, _____

City, _____

Prov. _____ Code _____

Prov. _____ Code _____

phone(_____) _____

phone(_____) _____

fax _____

fax _____

Model and size _____ Cross Auger

Model and size _____ Cross Auger

_____ 25 ft _____ 30 ft _____ 36 ft.

Serial no _____

Delivery Date _____

Delivery Date _____

Used for - farm custom pushing

Used for - farm custom pushing

DEALER INSPECTION REPORT

SAFETY

_____ Hydraulic connections all sealed

_____ All decals installed

_____ Reflectors clean

_____ Guards and shields installed

_____ Review operating and safety instructions

_____ Tire pressure 15psi for cushion

_____ Retainer pins installed as required

I have thoroughly instructed the customer on the above described equipment, including the content of the Owner's Handbook, equipment care, adjustments, safe operation, and applicable warranty policy.

Date _____ Dealer signature _____

The equipment was complete with all parts in good working order except as noted below. I have received the owner's handbook, and I have been thoroughly instructed in the use of it. I have been instructed in the care, adjustments, the safe operation of the machine, and the applicable warranty policy.

Date _____ Customer signature _____

Except _____

1. TABLE OF CONTENTS

1.	TABLE OF CONTENTS	3
2.	INTRODUCTION AND SIGN-OFF FORM	4
3.	SAFETY.....	5
3.1.	SAFETY OVERVIEW	6
3.2.	GENERAL SAFETY	6
3.3.	MAINTENANCE SAFETY	7
3.4.	HYDRAULIC SAFETY	7
3.5.	SHEAR SAFETY.....	7
3.6.	STORAGE SAFETY.....	7
3.7.	TRANSPORT SAFETY	7
3.8.	REFUELING SAFETY.....	8
3.9.	TIRE SAFETY	8
3.10.	OPERATING SAFETY	8
3.11.	CROSS AUGER SAFETY.....	8
3.12.	SAFETY DECALS	9
4.	SETUP FROM SHIPPING MODE.....	10
4.1.	MACDON 974 – 36FT RIGHT HAND DRIVE ASSEMBLY.....	11
4.2.	MOTOR TO DIRECT DRIVE,AUGER ASSEMBLY.....	12
4.3.	FIGURE 2 – MOTOR ASSEMBLY	13
4.4.	FIGURE 3 CENTER MOUNT	13
4.5.	FIGURE 4 LEFT HAND BEARING MOUNT 974.....	14
4.6.	HYDRAULIC PLUMBING	16
4.7.	HYDRAULIC INSTALLATION FD70 MODELS.....	17
4.8.	STRIPPER BAR INSTALLATION.....	19
5.	OPERATIONS	20
5.1.	FIELD SETTING THE CROSS AUGER	20
5.2.	ALTERNATE SYSTEM FOR SPEED CONTROL USING A BRAND MOTOR SPEED CONTROL VALVE	21
6.	CROSS AUGER PARTS	22
6.1.	RIGHT HAND DRIVE END MOUNT 974 ONLY- REAR VIEW.....	22
6.2.	CENTER BEARING MOUNT – 974 ONLY.....	23
6.3.	LEFT END BEARING MOUNT 974 ONLY.....	24
7.	SPECIFICATIONS—	25
8.	WARRANTY	26

2. INTRODUCTION AND SIGN-OFF FORM

Congratulations! on your choice of an Ag Shield cross auger. This equipment has been designed and manufactured to meet the harvesting needs of the discerning farmers and custom harvesters.

OPERATOR ORIENTATION - The directions left, right, front and rear, as mentioned throughout this manual, are as seen from the tractor driver's seat and facing in the normal direction of travel.

Ag Shield follows the general safety standards specified by the American Society of Agricultural Engineers (ASAE) and the Occupational Safety and Health Administration (OSHA). Anyone who will be operating and/or maintaining the Ag Shield Yield Shield must read and clearly understand ALL Safety, Operating, and Maintenance information presented in this manual.

Do not operate or allow anyone else to operate this equipment until such information has been reviewed. Review this information annually before season start-up. Make these reviews of safety and operation a standard practice for all of your equipment. An untrained operator is **not qualified** to operate this machine.

A sign off sheet is provided for your record keeping to show that all personnel who will be working with the equipment have read and understood the information in the Operators Handbook and have been instructed in the operation of the equipment.

SIGN-OFF FORM

DATE	OPERATORS SIGNATURE	EMPLOYERS SIGNATURE

3. SAFETY

SAFETY ALERT SYMBOL

This Safety Alert symbol means:
ATTENTION! BECOME ALERT!
YOUR SAFETY IS INVOLVED!

The Safety Alert symbol identifies important safety messages on the Ag Shield Yield Shield and in the manual. When you see this symbol, be alert to the possibility of personal injury or death. Follow the instructions in the safety message.



3 Big Reasons

Accidents Disable and Kill
Accidents Cost
Accidents Can Be Avoided

SIGNAL WORDS:

Note the use of the signal words **DANGER**, **WARNING** and **CAUTION** with the safety messages. The appropriate signal word for each message has been selected using the following guide-lines:

- DANGER** - An immediate and specific hazard which **WILL** result in severe personal injury or death if the proper precautions are not taken.
- WARNING** - A specific hazard or unsafe practice which **COULD** result in severe personal injury or death if proper precautions are not taken.
- CAUTION** - Unsafe practices which **COULD** result in personal injury if proper practices are not taken, or as a reminder of good safety practices.

3.1. SAFETY OVERVIEW

YOU are responsible for the **SAFE** operation and maintenance of your Ag Shield Yield Shield. **YOU** must ensure that you and anyone else who is going to operate, maintain or work around the canola pusher be familiar with the operating and maintenance procedures and related **SAFETY** information contained in this manual. This manual will take you step-by-step through your working day and alerts you to all good safety practices that should be adhered to while operating the canola pusher.

Remember, **YOU** are the key to safety. Good safety practices not only protect you but also the people around you. Make these practices a working part of your safety program. Be certain that **EVERYONE** operating this equipment is familiar with the recommended operating and maintenance procedures and follows all the safety precautions. Most accidents can be prevented. Do not risk injury or death by ignoring good safety practices.

- Yield Shield owners must give operating instructions to operators or employees before allowing them to operate the Yield Shield, and at least annually thereafter per OSHA regulation 1928.57.
- The most important safety device on this equipment is a **SAFE** operator. It is the operator's responsibility to read and understand **ALL** Safety and Operating instructions in the manual and to follow these. All accidents can be avoided.
- A person who has not read and understood all operating and safety instructions is not qualified to operate the machine. An untrained operator exposes himself and bystanders to possible serious injury or death.
- Do not modify the equipment in any way. Unauthorized modification may impair the function and/or safety and could affect the life of the equipment.
- Think **SAFETY!** Work **SAFELY!**

3.2. GENERAL SAFETY

1. Read and understand the Operator's Manual and all safety signs before operating, maintaining, adjusting the Yield Shield.
2. Only trained competent persons shall operate the reconditioner. An untrained operator is not qualified to operate the machine.



3. Have a first-aid kit available for use should the need arise and know how to use it.



4. Have a fire extinguisher available for use should the need arise and know how to use it.



5. Do not allow riders.

6. Wear appropriate protective gear. This list includes but is not limited to:



- A hard hat
- Protective shoes with slip resistant soles
- Protective glasses or goggles
- Heavy gloves
- Hearing protection

7. Stop the engine, place all controls in neutral, set park brake, remove ignition key and wait for all moving parts to stop before servicing, adjusting, repairing or unplugging.
8. Review safety related items with all personnel annually.

3.3. MAINTENANCE SAFETY

1. Review the Operators Manual and all safety items before working with, maintaining or operating the Yield Shield.
2. Stop the tractor engine, place all controls in neutral, set park brake, remove ignition key, wait for all moving pads to stop before servicing, adjusting, or repairing.
3. Before applying pressure to a hydraulic system, make sure all components are tight and that steel lines, hoses and couplings are not damaged.
4. Relieve pressure from hydraulic circuit before servicing or disconnecting from tractor.
5. Keep hands, feet, clothing and hair away from all moving and/or rotating parts.
6. Clear the area of bystanders, especially children, when carrying out any maintenance and repairs or making any adjustments.
7. Place stands or blocks under the frame before working beneath the machine.

3.4. HYDRAULIC SAFETY

1. Always place all tractor hydraulic controls in neutral before dismounting.
2. Make sure that all components in the hydraulic system are kept in good condition and are clean.
3. Replace any worn, cut, abraded, flattened or crimped hoses and steel lines.
4. Do not attempt any makeshift repairs to the hydraulic lines, fittings or hoses by using tape, clamps or cements. The hydraulic system operates under extremely high-pressure. Such repairs will fail suddenly and create a hazardous and unsafe condition.
5. Wear proper hand and eye protection when searching for a high-pressure hydraulic leak. Use a piece of wood or cardboard as a backstop instead of hands to isolate and identify a leak.
6. If injured by a concentrated high-pressure stream of hydraulic fluid, seek medical attention immediately. Serious infection or toxic reaction can develop from hydraulic fluid piercing the skin surface.

7. Before applying pressure to hydraulic system make sure that all connections are tight and that all hoses and fittings are in good condition.

3.5. SHEAR SAFETY

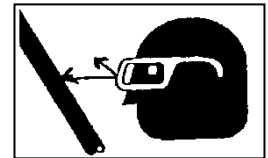
The operator must obey all safety labels.

1. Keep operators and bystanders away from all moving parts.
2. Shut off tractor engine and remove key before coming close to the implement or doing any maintenance
3. Never service or unplug shears while they are running, a single slip and you could be badly hurt or killed.

3.6. STORAGE SAFETY

1. Store unit in an area away from human activity.
2. Do not permit children to play on or around the stored Yield Shield.

3.7. TRANSPORT SAFETY



1. Read and understand ALL the information in the Operator's Manual regarding procedures and SAFETY when operating the Yield Shield in the field and/or on the road.
2. Check with local authorities regarding machinery transport on public roads. Obey all applicable laws and regulations.
3. Always travel at a safe speed. Use caution when making corners or meeting traffic.
4. Make sure the SMV (Slow Moving Vehicle) emblem and all the lights and reflectors that are required by the local highway and transport authorities are in place, are clean and can be seen clearly by all overtaking and oncoming traffic. Daybreak and dusk are particularly dangerous and pilot vehicles are recommended.

5. Ensure that the trailer is hitched positively to the towing vehicle. Always use a safety chain between the trailer and the tractor.
6. Keep to the right and yield the right-of-way to allow faster traffic to pass. Drive on the road shoulder, if permitted by law.
7. Always use hazard warning flashers on the Yield Shield when transporting unless prohibited by law.

3.8. REFUELING SAFETY

1. Handle fuel with care. It is highly flammable.



2. Do not refuel the machine while smoking or when near open flame or sparks.

3. Stop engine before refueling. Clean up spilled fuel before restarting engine.

3.9. TIRE SAFETY

1. Failure to follow proper procedures when mounting a tire on a wheel or rim can produce an explosion, which may result in serious injury or death.
2. Do not attempt to mount a tire unless you have the proper equipment and experience to do the job.
3. Have a qualified tire dealer or repair service perform required tire maintenance.
4. Operate the tires at the pressures, loads, and speeds suggested by the manufacturer.

3.10. OPERATING SAFETY

1. Read and understand the Operator's Manual and all safety signs before using.
2. Stop engine place all controls in neutral, set park brake, remove ignition key, wait for all moving parts to stop before servicing, adjusting, repairing or unplugging.
3. Before conditioning a field, be familiar with all potential hazards: trees, rocks, ditches, gullies, etc. Plan your route to avoid hazards. Keep Yield Shield width in mind when maneuvering to avoid obstacles.

4. Keep hands, feet, hair and clothing away from all moving and/or rotating parts.
5. Keep all shields and guards in place when operating.
6. Do not allow riders on the Yield Shield or tractor during operation or transporting.
7. Clear the area of all bystanders, especially children, before starting.
8. Stay away from machine when folding deflectors. Keep others away.
9. Before applying pressure to the hydraulic system, make sure all components are tight and that steel lines, hoses and couplings are not damaged.
10. Review safety instructions annually

3.11. CROSS AUGER SAFETY

The cross auger has sufficient power to sever limbs and cause serious to fatal injury. Always stop the cross auger before dismounting. Always be certain that no one is in front of combine header Shield before engaging the auger drive.

When greasing the auger, do so with the combine motor shut off and the park brake securely set.

Never attempt to help the crop move along the canvases with a wrench or other item that might get into the auger and draw the wrench holder into the auger.

3.12. SAFETY DECALS

Become familiar with these decals and the hazards they are marking.



part #113522

part #113524



part # 113552

4. Setup from Shipping Mode

Operator's handbook for Ag Shield Cross auger to fit on to a 36 ft MacDon 974 header

Installation sequence

1. Bolt on left hand end mount.
2. Bolt on the center mount
3. Bolt on the right hand end mount.
4. Bolt the motor mount and direct drive end to the motor. Critical that the direct drive hub is held to the motor using the 1/4" bolt and 1/4" lock washer. See exploded view or motor end.
5. Identify the left auger as a tubing cut length of 187 1/2 inches and the flighting will move material toward center turn down on the forward edge of the auger. The 15 inch removable paddle goes to the center of header.
6. Slip the auger onto the square driveshaft noting the location of the grease zerk behind the paddle. The grease zerk on the U-Joint, the top service hole in the center bearing mount, and the zerk behind the paddle should all align.. Bolt on the end support bearing leaving the fasteners loose for final adjustment..
7. Install the right hand auger similarly aligning the grease zerk behind the paddle and bolting up the end bearing on the right hand mount. The distance between the augers at the center should be 10-1/8" centered on the center bearing mount.
8. Adjust clearance between the augers to the backboard of the header to approx 1/4" at the ends of the header, the auger will run on a small angle away from the back board as it gets closer to the center.
9. Tighten the bearings and mounts.
10. **Tilt header all way back and lift center drum on header until max, check for clearance between the auger flighting and paddle vs. the center drum and fingers. Slide the auger forward and AFT accordingly.**
11. Install hydraulic hoses as follows: The pressure hose will come from the return line of the right hand canvas motor, the right hand canvas motor return is shown in Fig 7. The pressure hose then goes to the rear port of the motor so that the oil will take the long way around the motor, and exit out the front port of Motor. The return hose comes from the forward port of Ag Shield cross auger motor, and returns to the #10 JIC male hose end left open.
12. Before testing turn auger by hand to make sure it will not come in contact with the frame of the header.
13. Test direction of rotation to be down on the front of the auger, and set speed of the reel, and use the flow control supplied to set the auger speed to be 5% or slightly greater than the canvases.
14. Grease the center section housing, Yolk, and both augers before use.

4.1. MACDON 974 – 36FT RIGHT HAND DRIVE ASSEMBLY

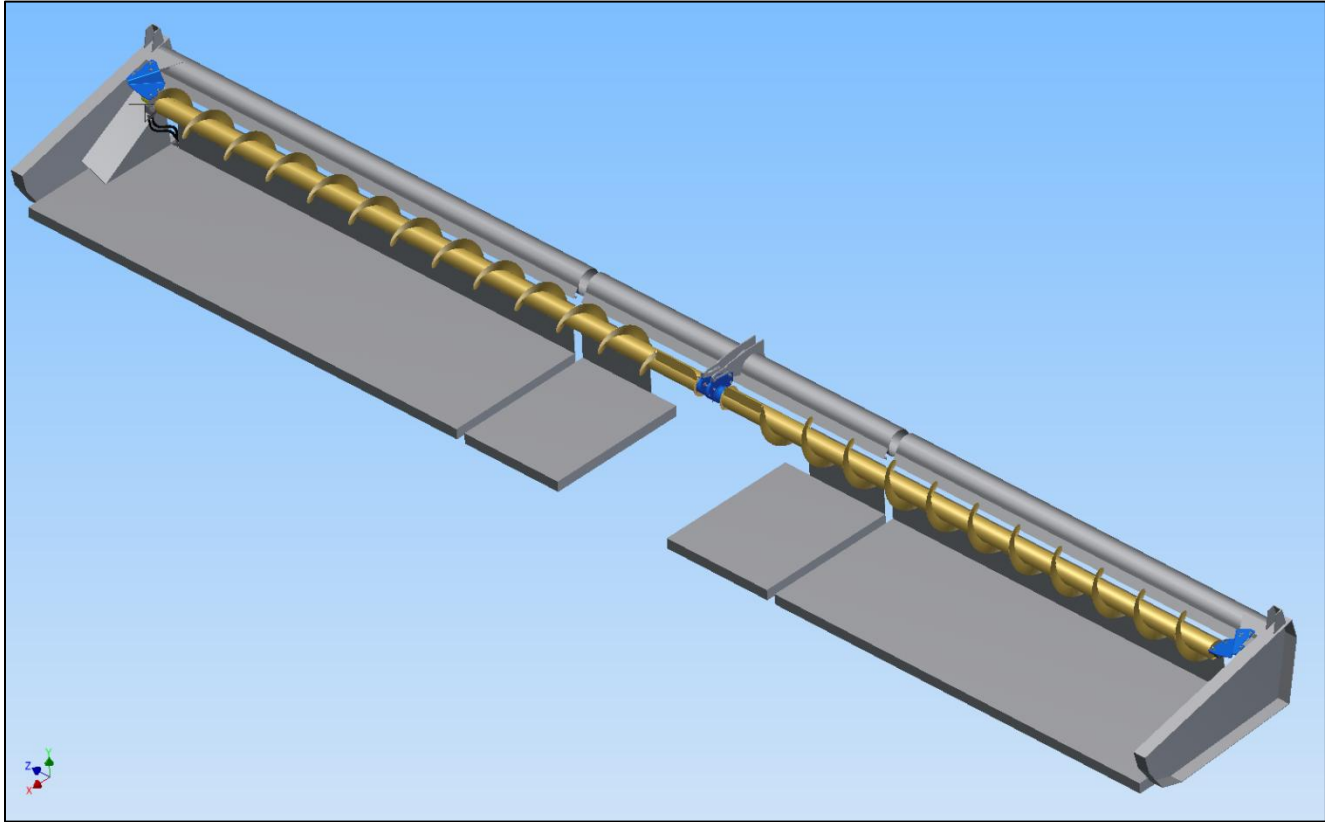
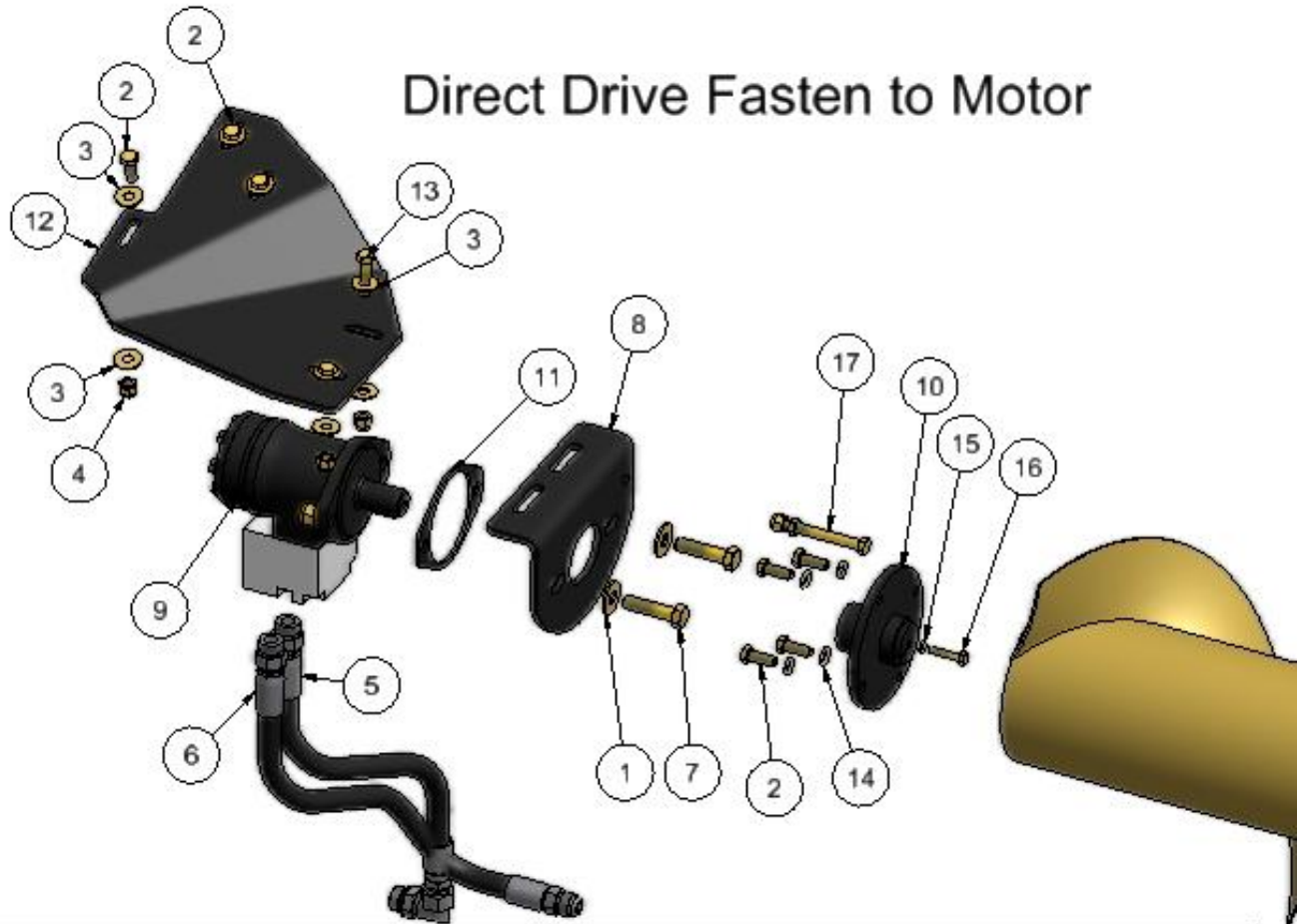


FIGURE 1 COMPLETE HEADER 974 RIGHT HAND DRIVE

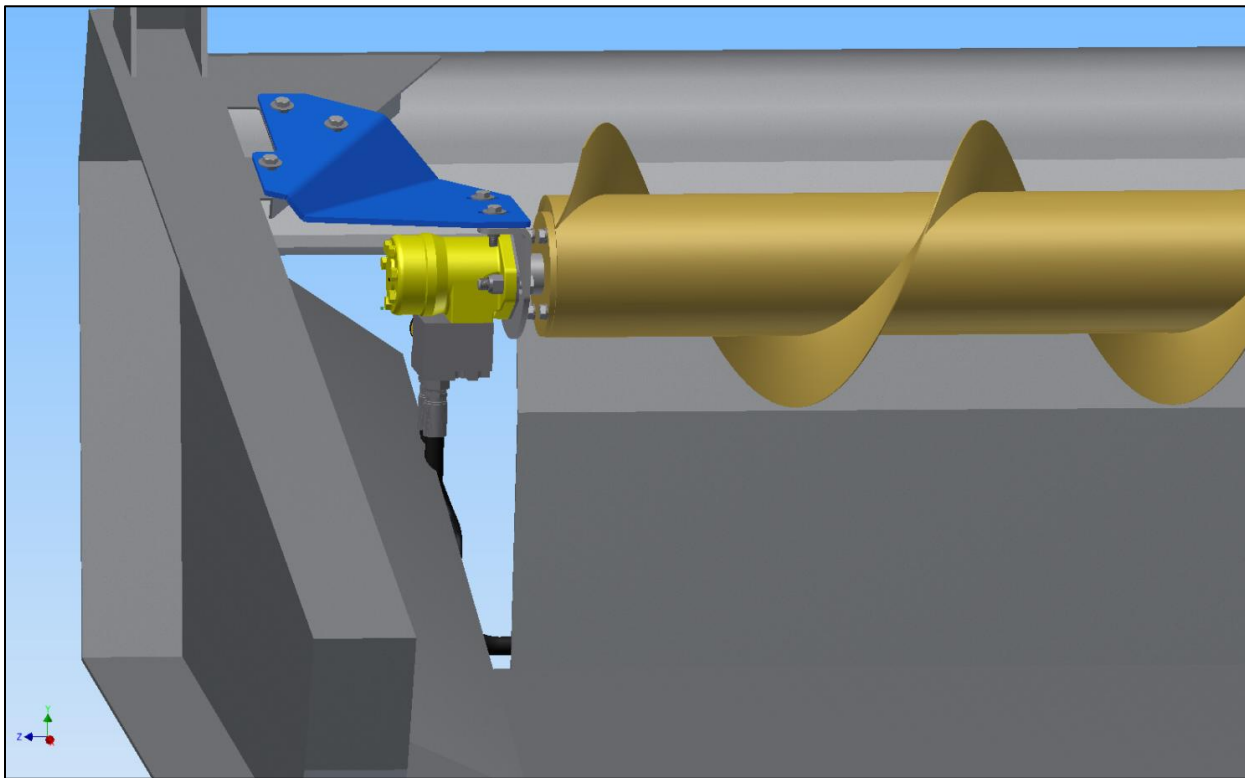
4.2. MOTOR TO DIRECT DRIVE,AUGER ASSEMBLY



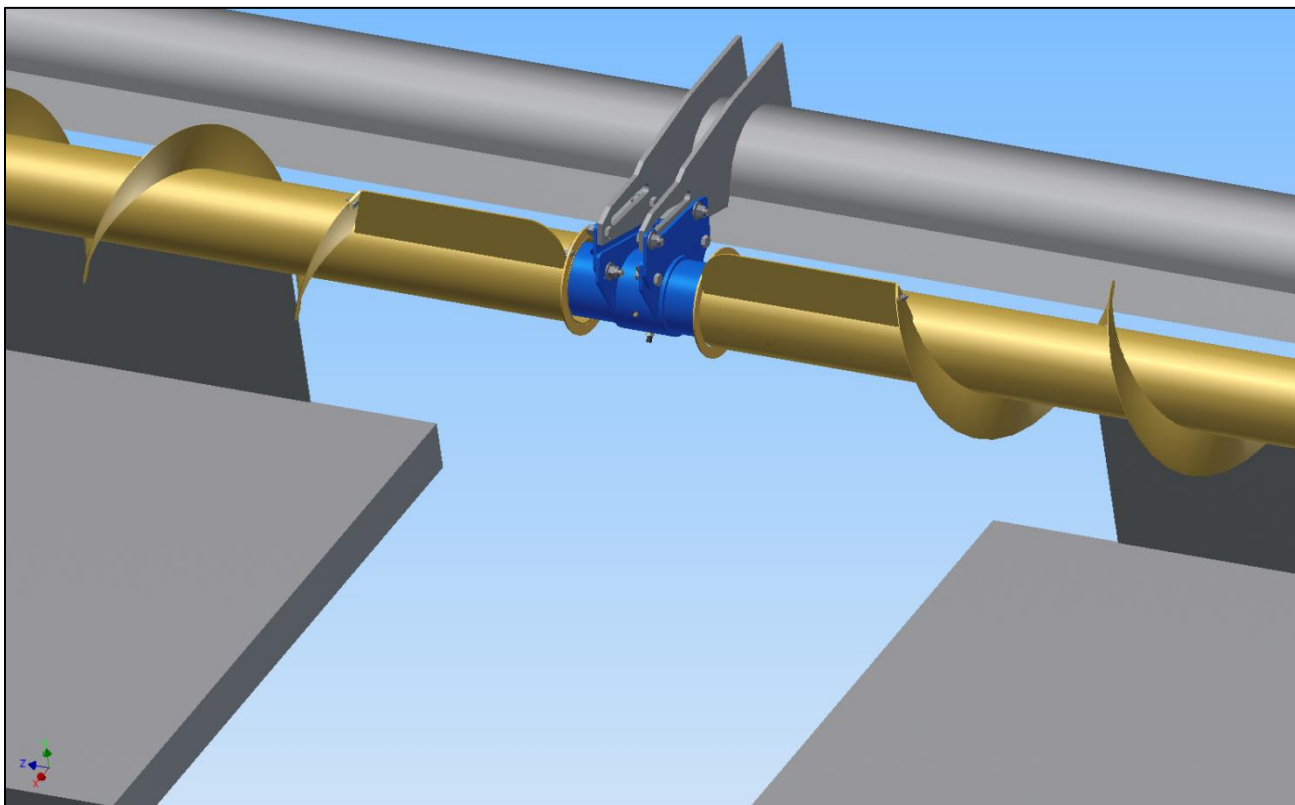
ITEM	QTY	PART NUMBER	ITEM	QTY	PART NUMBER
1	14	101106 flat washer 1/2"	10	1	407105 direct drive motor adapter wldt
2	10	100602 bolt 3-8 X 1 gr5 pltd nc	11	1	407271 shim hyd motor mt AGCO 9250
3	16	101105 flat washer 3/8"	12	1	408292 MD974 Mnt Mtr end DirDrv
4	9	102123 nut nylok 3/8" nc gr5 pltd	13	2	100604 bolt 3-8 X 1 1-2 gr5 pltd nc
5	1	406199 MD974 Hose08 16in 10MORB x 08FJIC	14	4	101145 lock washer 3/8"
6	1	406200 MD974 Hose08 16in 10MORB x 10MJIC	15	1	101144 lock washer 1/4
7	4	100703 bolt 1-2 X 2 gr5 pltd nc	16	1	100404 bolt 1-4 X 1 1-4 nc
8	1	408111 hyd motor mt macdon dirdrv	17	1	100610 bolt 3-8 X 3 gr5 pltd nc
9	1	117170 motor with flow control 5.9 danfoss			

- 1) Check that the keystone is in the motor shaft
- 2) Insert the motor into the direct drive spindle until the base of motor shaft is tight against the direct drive spindle.
- 3) Insert the 1/4" draw bolt and 1/4" lock washer into the drive spindle, and align with the hole in motor
- 4) Tighten to 15 lb-foot of torque
- 5) Place the direct drive spindle into the end of auger
- 6) Secure with the 3/8 x 1 bolts and 3/8 lock washers

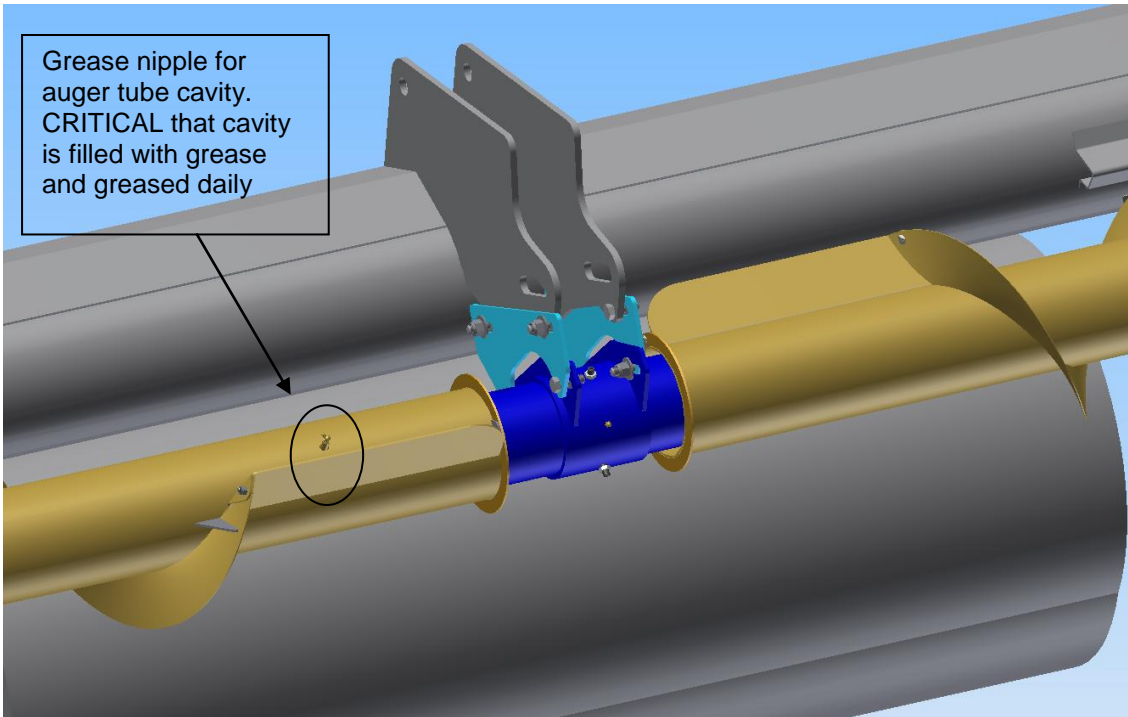
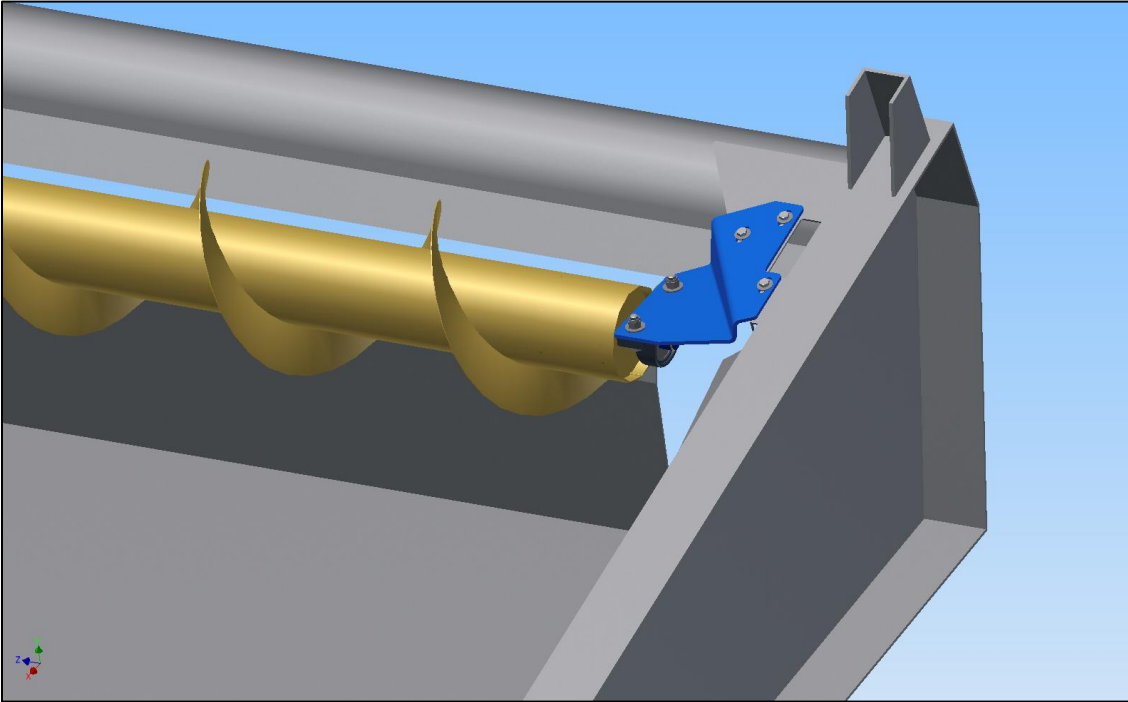
4.3. FIGURE 2 – MOTOR ASSEMBLY



4.4. FIGURE 3 CENTER MOUNT



4.5. FIGURE 4 LEFT HAND BEARING MOUNT 974



1. BE SURE TO ROTATE AUGER BY HAND BEFORE APPLYING ANY HYDRAULIC FLOW, TO ENSURE AUGER HAS CLEARANCE FROM BACK BOARD.
2. **CRITICAL: NEED TO GREASE THE AUGER TUBE TO FILL THE CAVITY THAT THE SQUARE SHAFT SLIDES THROUGH 6 OZ OF GREASE PER AUGER . ON THE LH AND RH AUGER. AS WELL AS THE CENTER BEARING RACE.**

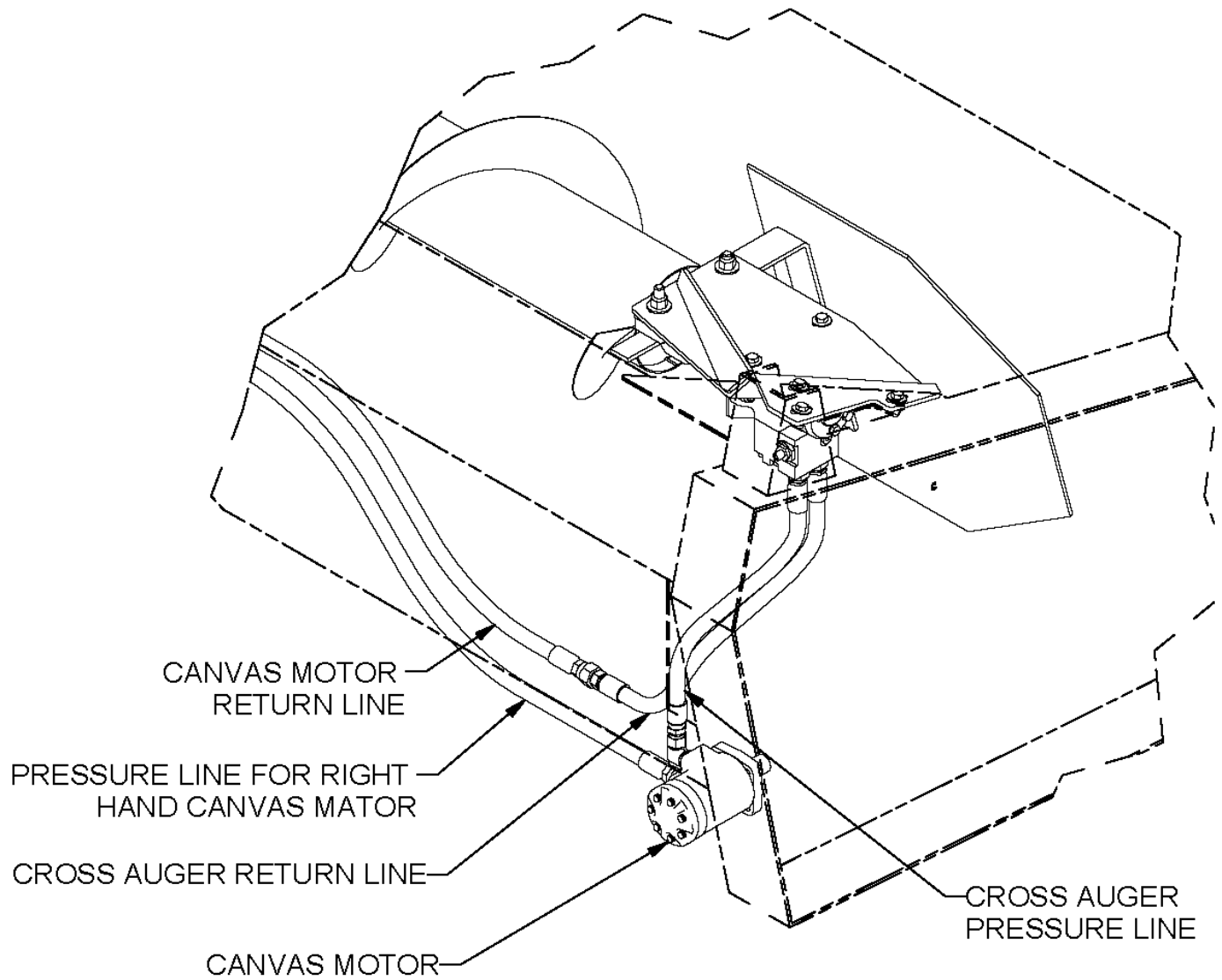


Grease gun shown on auger at the center end. Critical that the cavity is filled with 6 OZ of grease. Grease the auger after it is installed onto the center section and the shafts are through the auger. If using a standard grease gun the tube should be 14 OZ. Roughly half a tube of grease per auger will be required.

4.6. HYDRAULIC PLUMBING

FIGURE 7 HYDRAULIC PLUMBING 974 Right hand drive

MACDON 974 FLEX CROSS AUGER HYDRAULIC DRIVE PLUMBING



4.7. HYDRAULIC INSTALLATION FD70 MODELS

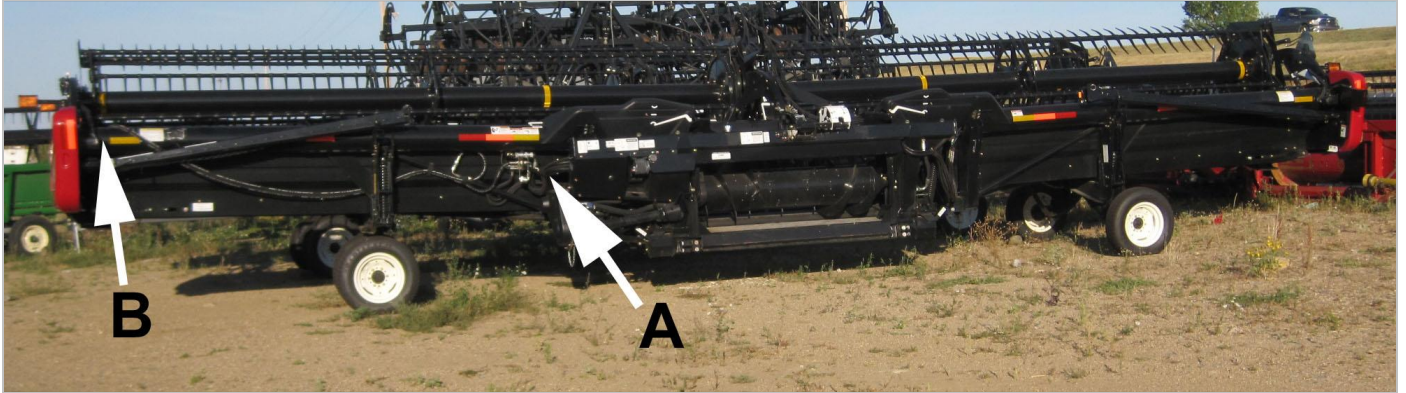


FIGURE 4 2011 HYDRAULIC HOSES ON FD70 / CASE 2162

The auger drive pressure hose runs from the return line from the right hand canvas drive motor **at A** to the Ag Shield auger motor **at B** – and the return hose runs from the forward port of the motor back to the fitting to which the canvas motor was originally attached. The hoses extend the series loop of motors by one additional motor.

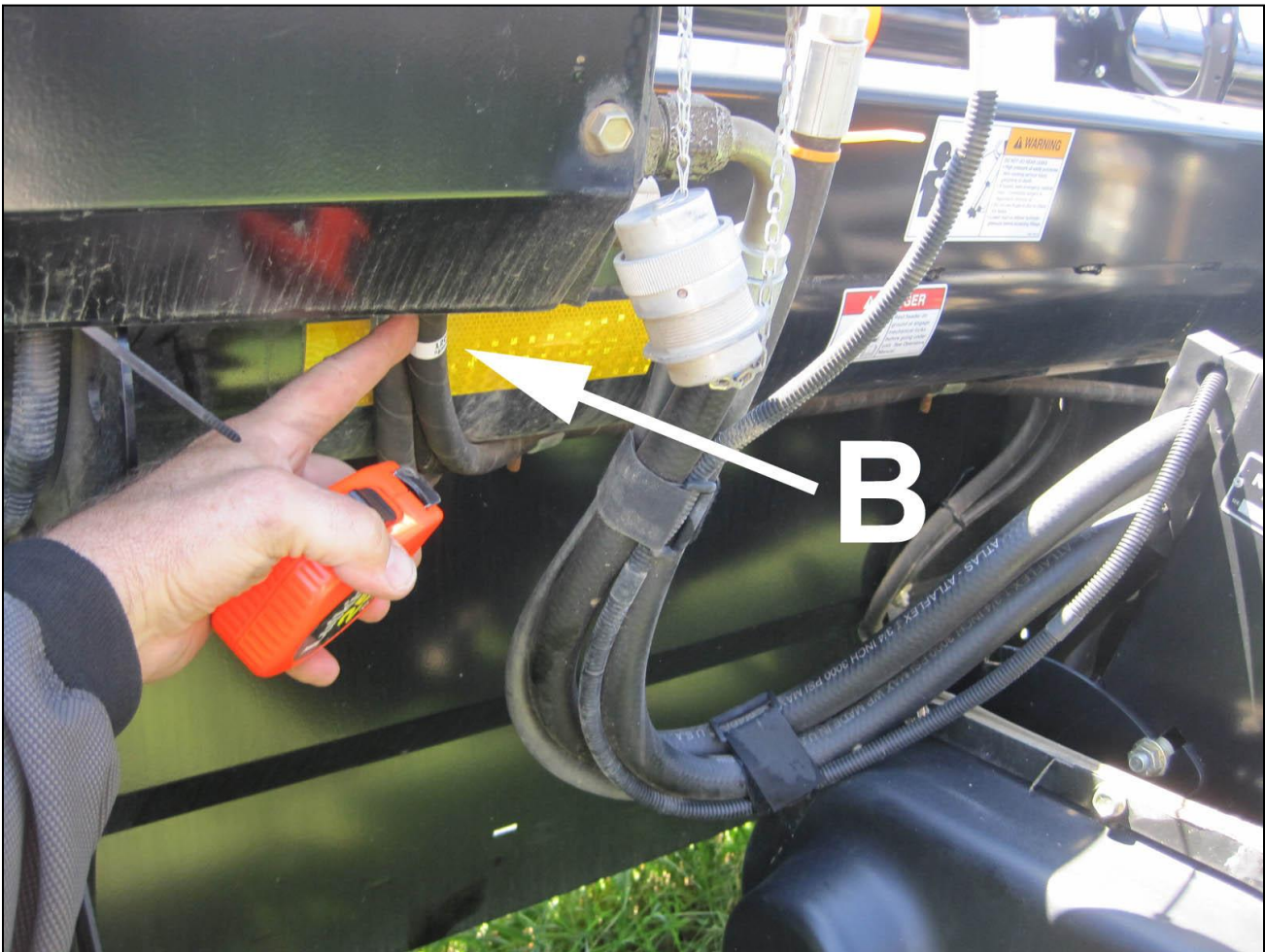


FIGURE 5 CANVAS RETURN HOSE LEFT SIDE OF CENTER PRE 2010 MODELS

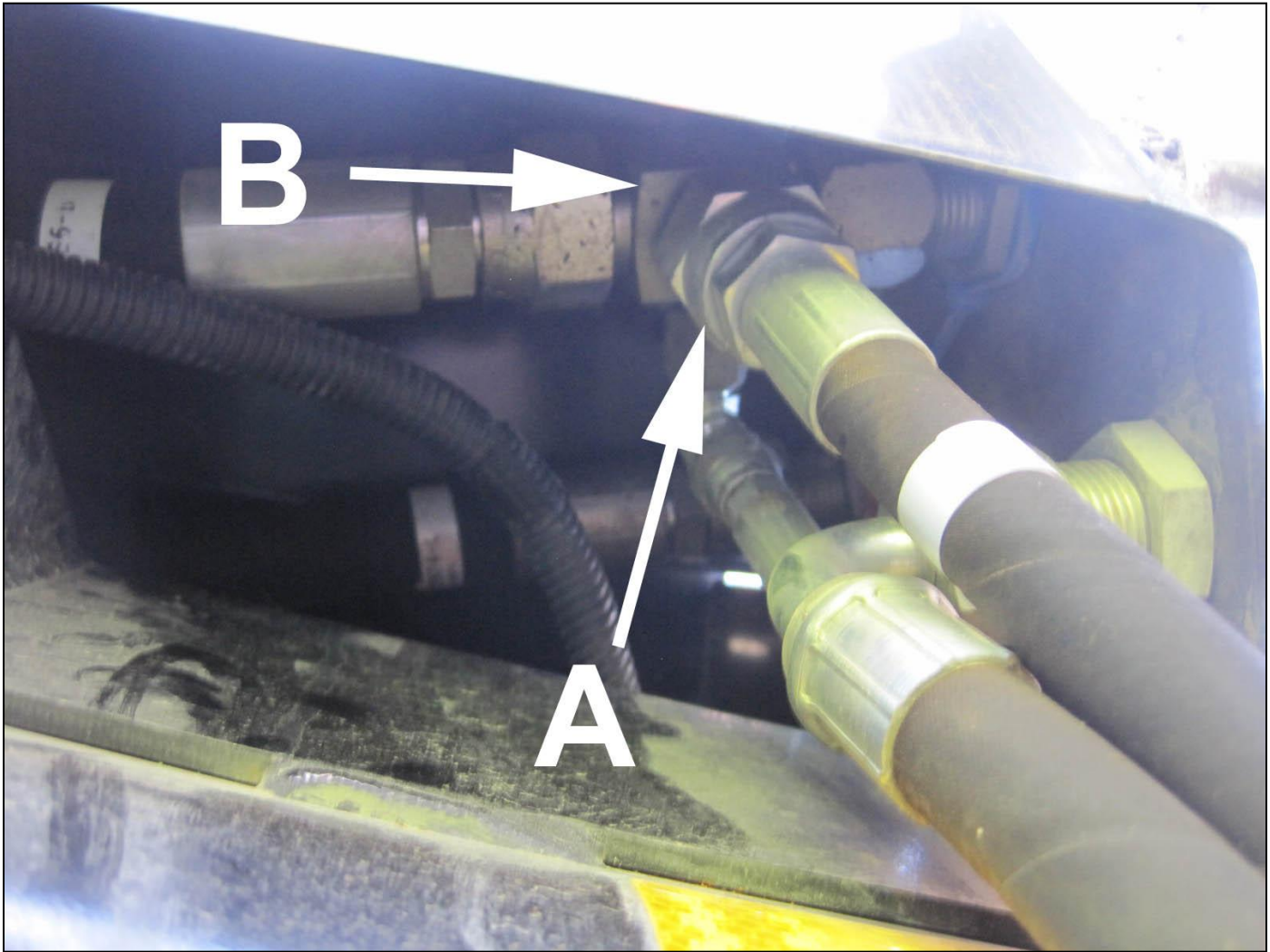


FIGURE 6 HOSE ATTACHMENT FROM BOTTOM UP

1. Disconnect hoses end "A" from the fitting "B" The pressure hose "A" comes from the return line from the right hand canvas motor
2. Connect the Ag Shield Pressure hose to the hose end A,
3. Connect the other end of pressure hose to the rear port of the Ag Shield motor. (The oil will take the long way around the motor , and exit out the front port of motor)
4. Connect the Ag Shield "Return" hose to forward port of motor
5. Connect the other end of the return hoses to the fitting B in photo above, the right hand canvas motor return is shown in picture . The return hose comes from the forward port of Ag Shield cross auger motor, and returns to the #12 JIC male tee left open.at B

4.8. STRIPPER BAR INSTALLATION

- 1) All Ag Shield augers now come with a stripper bar to help prevent crop from wrapping on the auger, as well as to provide a cleaner transfer of crop to the center of the header.
- 2) Put the stripper bar on last after the auger has been installed and tested. This will ensure the height of the auger does not change after the stripper bar height has been set.



Hold stripper bar up to the back board and mark the holes in the middle of the slot (every second hole will be fine)

A magnet will help hold one end if installing alone.

Make sure before drilling that the drill will not damage anything behind the back board (hyd fittings hoses etc)

Drill 3/8" holes in the middle of the slot in the back board.

Set the stripper bar to be 1/4" below the flighting.

Tighten the stripper bar to the back board.

5. OPERATIONS



DANGER

Stay clear of auger whenever it is running

5.1. FIELD SETTING THE CROSS AUGER

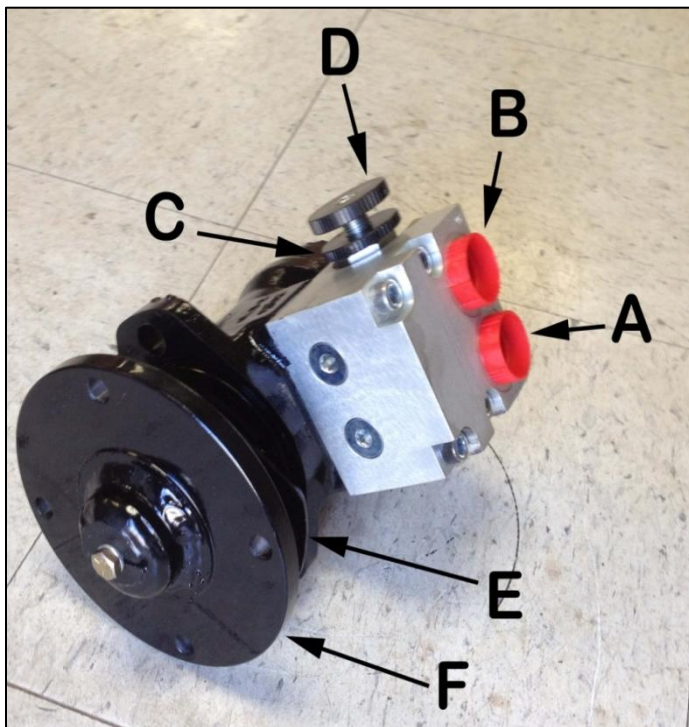


FIGURE 7 SAUER MOTOR SPEED CONTROL

Terminology

- A: Return or tank line
- B: Pressure line
- C: Lock wheel
- D: Auger speed adjustment
- E: Shim for hydraulic motor mount
- F: Direct driver motor adapter

Cross augers can only be adjusted for speed of rotation. In many conditions, the correct speed for many crops would be to have the flighting advancing the crop along the canvas 5% or slightly faster than the canvas speed. To increase auger speed, loosen lock wheel A counterclockwise, rotate adjust valve C clockwise, relock the valve by turning A clockwise. Closing this valve reduces the bypass of oil around the hydraulic motor. To slow down the rpm of the auger, rotate adjust valve D counterclockwise.

Observe the auger from the combine cab or swather operating platform. Focus your eye on one auger flighting and compare to a particular canvas slat. The auger can be adjusted to run at the same rate in feet per minute. As desired, slightly increase the cross auger to have it pulling ahead faster than the canvas.

In peas, augers can often be operated at a very slow speed--- 30% of canvas speed, and still feed as much crop into combine. When augers turn slower, there are fewer tendencies to wrap.

If wrapping occurs at the center of the header, try removing one or both of the bolts on paddles – In some conditions the paddles are an advantage, in some conditions the paddles are a disadvantage.

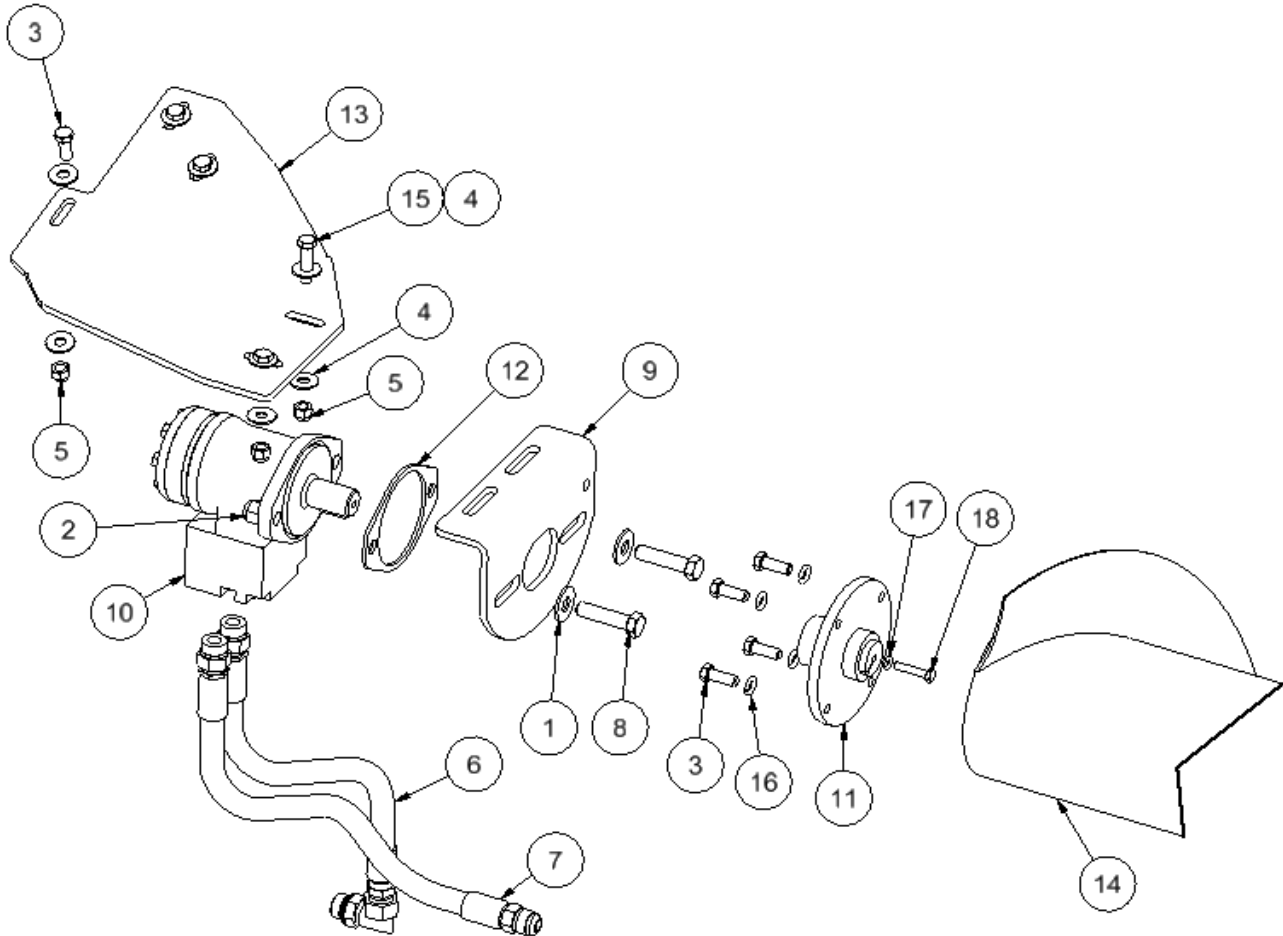
5.2. ALTERNATE SYSTEM FOR SPEED CONTROL USING A BRAND MOTOR SPEED CONTROL VALVE.

Turn dial on motor speed control to have changes in auger speed.

6. Cross Auger Parts

6.1. RIGHT HAND DRIVE END MOUNT 974 ONLY- REAR VIEW

MacDon 974 Flex Cross Auger Motor End Mount

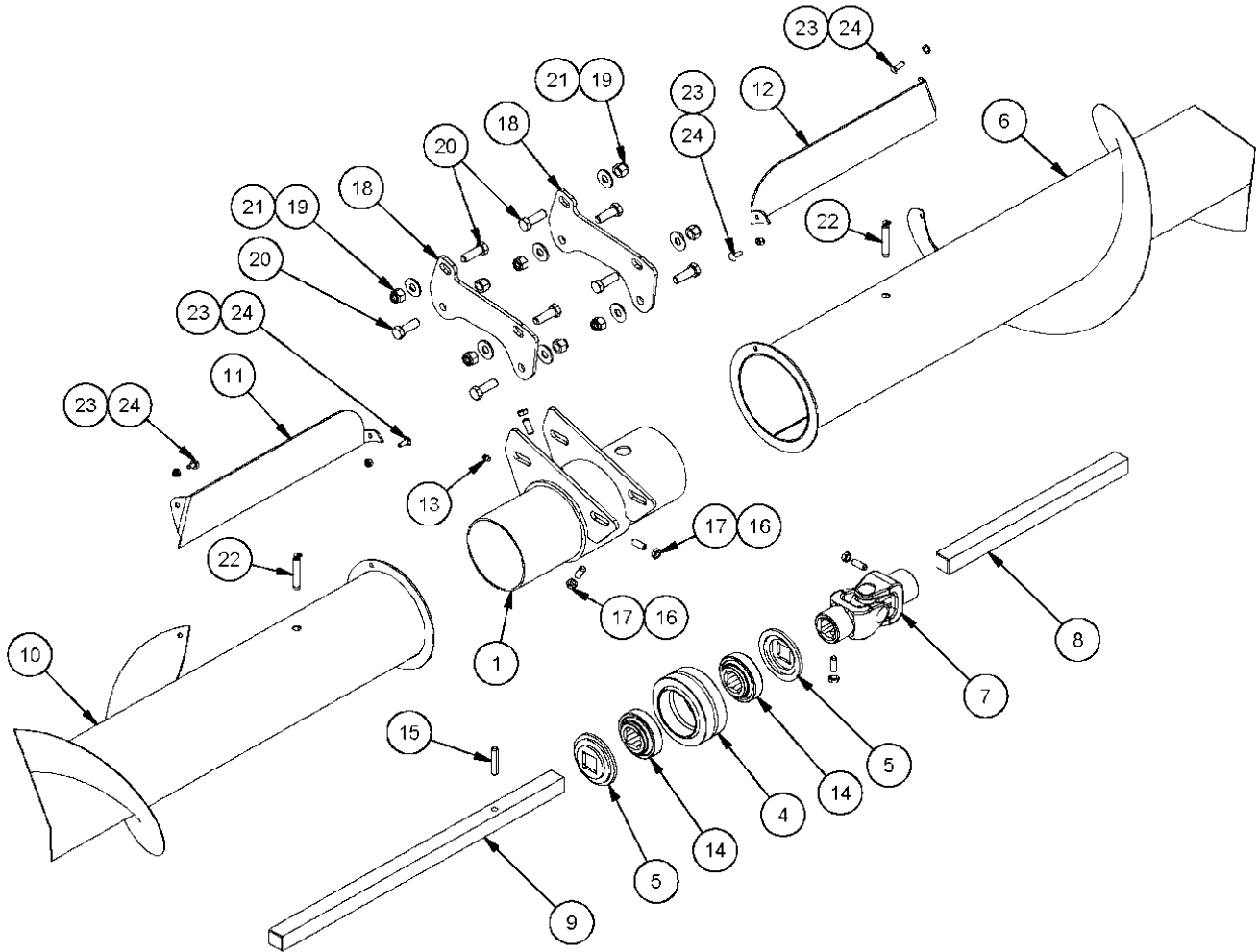


Parts List			Parts List		
ITEM	QTY	PART NUMBER	ITEM	QTY	PART NUMBER
1	14	101106 flat washer 1/2"	10	1	117170 motor with flow control 5.9 danfoss
2	12	102125 nut nylok 1/2" nc gr5 pltd	11	1	407105 direct drive motor adapter wldt
3	10	100602 bolt 3-8 X 1 gr5 pltd nc	12	1	407271 shim hyd motor mt AGCO 9250
4	16	101105 flat washer 3/8"	13	1	408292 MD974 Mnt Mtr end DirDrv
5	8	102123 nut nylok 3/8" nc gr5 pltd	14	1	408293 MD974 Flex Auger Wldmt RH DirDrv
6	1	406199 MD974 Hose08 16in 10MORB x 08FJIC	15	2	100604 bolt 3-8 X 1 1-2 gr5 pltd nc
7	1	406200 MD974 Hose08 16in 10MORB x 10MJIC	16	4	101145 lock washer 3/8"
8	4	100703 bolt 1-2 X 2 gr5 pltd nc	17	1	101144 lock washer 1/4
9	1	408111 hyd motor mt macdon dirdrv	18	1	100404 bolt 1-4 X 1 1-4 nc

For 30ft 974 kits – Item # 14 will be part # 405935

6.2. CENTER BEARING MOUNT – 974 ONLY

MACDON 974 FLEX CROSS AUGER CENTER BEARING MOUNT

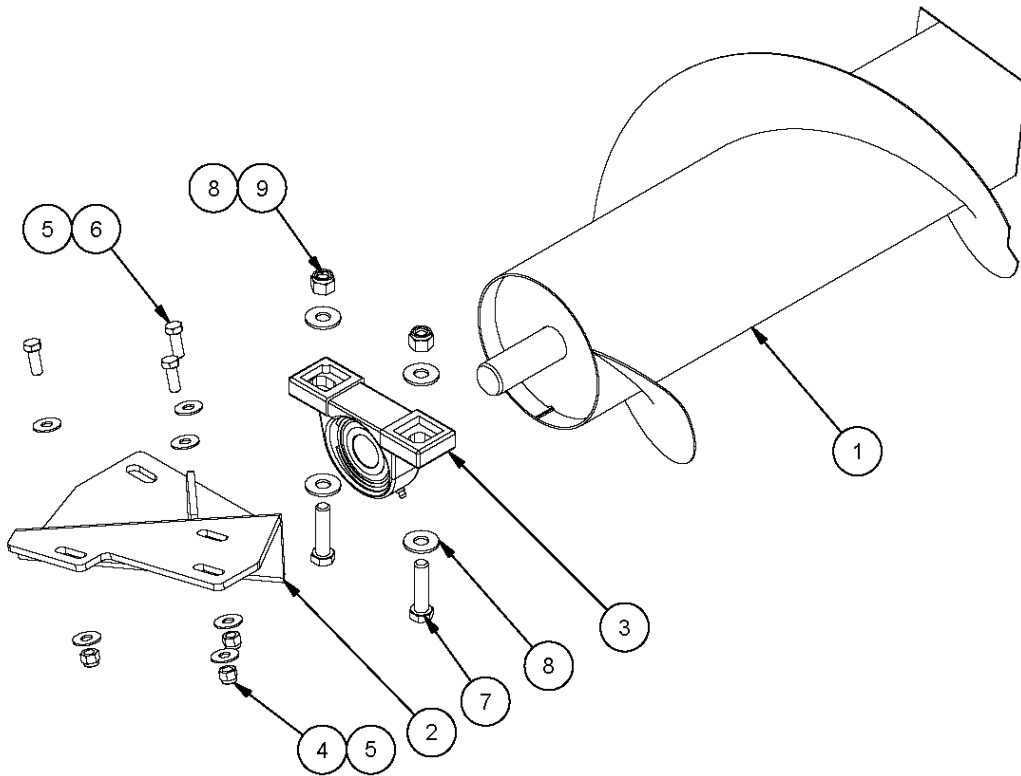


Parts List			Parts List		
ITEM	QTY	PART NUMBER	ITEM	QTY	PART NUMBER
1	1	406171 Center Bearing Mount Wldmt	13	1	105602 grease nipple 1 4 x28 nf str
2	1	406180 Yoke Shaft Wldmt LH	14	2	111982 bearing 80mm x 1-1_8 sqr RBL W208PP5
3	1	406179 MD 974 Yoke Shaft Wldmt RH	15	1	103304 spring pin 3/8"x2" lg
4	1	111983 Bearing Spherical GE 80 ES 2RS	16	3	105105 Set Screw 3-8 x 1in
5	2	406196 MD974 Bearing Retainer Wldmt	17	3	102131 nut jam 3-8 nc gr5 1-2 HGT
6	1	406158 MD 974 Flex Auger Wldmt RH	18	2	406188 MD974 Center Mount Adapter Plate
7	2	111980 Yoke Assembly	19	8	102125 nut nylok 1/2" nc gr5 pltd
8	1	406181 Yoke Sq Shaft 1 1-8 RH	20	8	100702 bolt 1-2 X 1 1-2 gr5 pltd nc
9	1	406182 MD974 Yoke Sq Shaft 1 1-8 LH	21	8	101106 flat washer 1/2"
10	1	406157 MD 974 Flex Auger Wldmt LH	22	2	zerk grease nipple 1 8 PTF -- 1649-B Alemite
11	1	406175 MD974 Paddle Wldmt LH	23	4	102121 nut nylok 1/4" nc gr5 pltd
12	1	406174 MD974 Paddle Wldmt RH	24	4	100966 Carriage Bolt 1-4 X 3-4 NC

For 30ft 974 kits – Item # 10 will be part # 405935, Item # 6 will be part # 405938

6.3. LEFT END BEARING MOUNT 974 ONLY

MACDON 974 FLEX CROSS AUGER BEARING END



Parts List			Parts List		
ITEM	QTY	PART NUMBER	ITEM	QTY	PART NUMBER
1	1	406157 MD 974 Flex Auger Wldmt LH	6	3	100602 bolt 3/8" x 1" gr5 pltd nc
2	1	406166 MD974 Flex Bearing End Support LH	7	2	100703 bolt 1-2 X 2 gr5 pltd nc
3	1	114470 pillow block SA207 2 bolt	8	4	101106 flat washer 1/2"
4	3	102123 nut nylok 3/8" nc gr5 pltd	9	2	102125 nut nylok 1/2" nc gr5 pltd
5	6	101105 flat washer 3/8"			

For 30ft 974 kits – Item # 1 will be part # 405935

7. Specifications—

call Ag Shield

8. WARRANTY

1. Ag Shield Manufacturing warrants each new Ag Shield reconitioner to be free from factory defects in material and workmanship under normal use and service, when set up and operated in accordance with factory instructions for one year from the date of delivery to the original purchaser.
2. Ag Shield's obligation under this warranty is limited to the supplying of replacement parts which are defective due to factory workmanship or material.
3. Your Ag Shield Dealer is responsible for providing warranty labour. Credit for required labour is specifically agreed to on an individual case basis.
4. The warranty is void on any unit which has been tampered with, or modified in any way not authorized in writing by the factory.
5. This warranty is void on any unit which is subject to misuse, negligence or accident, or which has had the serial number tampered or removed.
6. A "Warranty Claim Form" (sample at end of handbook) must be submitted to Ag Shield with returned parts in order for parts to be considered for warranty examination.
7. A warranty registration page from the front of this manual must be returned to the factory in order to qualify for warranty examination.
8. All returned parts must be sent to the factory freight prepaid, and warranty parts will be returned to you freight collect.
9. Replacement parts shipped pending receipt of parts for examination will be invoiced, and remain on your account until such time as examination indicates that a credit for those parts be issued or that payment is due.
10. Parts not returned for warranty examination within 30 days must be paid for at that time. Ag Shield will immediately reimburse any cash paid for items that are later determined defective.
11. Warranty terms and conditions are subject to provincial and state legislation.

WARRANTY CLAIM FORM

Ag Shield Mfg
 Box 9, Benito,
 MB, R0L 0C0
 ph 800-561-0132
 fax 204-539-2130
 ph 204-539-2000i

Dealer		
Address		
City	State/Province	Zip/Postal

End User		
Address		
City	State/Province	

DATE OF SALE	DATE FAILED	REPAIR DATE	ACRES/HOURS	MODEL	SERIAL NUMBER
--------------	-------------	-------------	-------------	-------	---------------

LABOUR HOURS	LABOUR RATE	LABOUR AMOUNT	PARTS MUST BE RETURNED TO BENITO MB FREIGHT PREPAID TO BE CONSIDERED FOR WARRANTY. DATE SHIPPED		
--------------	-------------	---------------	---	--	--

QUANTITY ITEM	PART NUMBER	DESCRIPTION	PRICE EACH	TOTAL PRICE	DESCRIBE THE CAUSE OF FAILURE AND CORRECTIVE ACTION TAKEN	APPROVE /REJECT
1						
2						
3						
4						
5						
6						
7						
8						

I CERTIFY THAT THE INFORMATION IS ACCURATE AND THAT THE PARTS WERE REPLACED ON THE MACHINE	PARTS	DATE PARTS RECD	RECD BY
	LABOUR	ITEMS TO SUPPLIERS	
	TOTAL		

SHADED AREAS AG SHIELD USE ONLY ---PLEASE ADD DETAILS FOR ITEM NUMBERS ON BACK

