

OPEN FIELD LEVELERS

The Solution for Open Field Leveling Requirements



T. G. SCHMEISER®



OP

SCHMEISER GRADER BLADE



PFS SERIES PRECISION FINISH SCRAPER



ENFIELD

VARITRAK™ 3PT. LAND LEVELER



SLP SERIES FOLDING TRI-PLANE LAND LEVELER



SCHMEISER TRI-PLANE LAND LEVELER



TRI-PLANE LEVELER

INCORPORATES THE BEST CHARACTERISTICS OF TRADITIONAL LAND PLANES WITH OUTSTANDING IN-FIELD DURABILITY. HEAVY GAUGE CONSTRUCTION ADDS MORE POUNDS AND STRENGTH THAN COMPETITIVE DESIGNS FOR LONGER LIFE, DEPENDABILITY AND PERFORMANCE.

- Reinforced pull frame and front end for extended wear life
- Front & rear vertical pivot points with heavy duty bushings
- Heavy wall thickness for all frame members



SLP 16DS model shown



SLP 24QRF model shown

- Flange bearing design on all steel wheels for easy service
- Smooth rolled bucket design for increased soil flow and minimal resistance
- Large flotation tires for easy towing
- Available in widths of 12' through 18' (Rigid) and 20' through 24' (Folding) and lengths of 30' and 40'
- Bucket wings and rear steel wheels easily fold for transport into an 11'0" width on folding units



PIVOT POWER

High wear carbon fiber bushings along with rugged triple-layer thrust bearings ensure long life and reliable performance. Easy-to-lockout front end allows for quick and dependable transport.

VARITRAK™ 3PT. LAND LEVELER

HIGH SPEED & MANEUVERABLE

The Schmeiser Varitrak 3pt. Leveler acts like a long pull-style land plane, yet is highly maneuverable for tight turns. The hitch in the front has a special self-leveling linkage that compensates for the tractor wheels going over uneven ground.



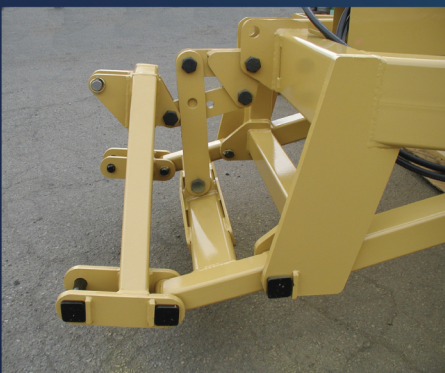
SVT 24R Model shown

- 16', 20' and 24' wide buckets
- 5-8 mph operating speed
- 30" bucket height
- 42" bucket depth
- CAT III hitch size – (CAT III Quick Hitch)
- Reinforced 3pt. framework
- Extra HD bushings in high wear pivot points



Shown: 3Pt. hydraulic attachment that easily adapts the unit for Laser use.

20' and 24' models have a folding bucket for a convenient 13' 6" transport width.



PFS SERIES PRECISION FINISH SCRAPER

EXTREMELY VERSATILE

The PFS Series Precision Finish Scraper is designed to provide precision laser and GPS leveling in diverse applications such as: open fields, feedlots, dairy, construction, open mining and any place where exact leveling is required. In addition, the PFS Precision Finish Scraper can also serve as a standard leveler in conventional situations.

- Available in the following working widths: 12', 14', 16', 18', 20', 22' and 24'.

Schmeiser quality is built in:

- Tough, durable and reliable construction.
- Detachable pull frame.
- CAT IV Perfect Hitch.
- Adjustable hitch height.
- Slobber bits 5/8" - AR material/reversible.
- 42" bucket height / 66" depth.
- Double-beveled reversible 3/4"x8" high carbon blade.
- Tandem walking beams with 2-3/4" spindles.

Options:

- Easy to haul "End Tow Transport" available for 20', 22' and 24' models.
- Laser Towers (single or twin).
- GPS stands (single or twin).



SCHMEISER GRADER BLADE

20', 30' and 40' WIDTHS PROVIDE
OPTIMAL SINGLE PASS LEVELING;

FOLDS TO 8' FOR CONVENIENT TRANSPORT.

Ideal for open field work, the Schmeiser SGB Series Grader Blade offers high-quality grading where laser and precision scrapers are not necessary. Built to maximize your daily productivity, the 40' wide working blade covers more land - with fewer passes - in less time, saving on fuel and labor.

The folding mechanism allows the grader to be easily transportable to multiple sites for optimum efficiency.



- 40' width: fewer passes required.
- Transport width: 8'.

Schmeiser quality is built in:

- Tough, durable and reliable construction.
- Reversible cutting blade.
- Self-lubricating bushings on high-impact pivot points.
- 27" curved bucket height promotes optimum soil roll.
- Easy to adjust reversible gauge wheels.
- Positive hydraulic depth control is standard.

SCHMEISER TRI-PLANE LAND LEVELERS

Model	Width x Length	Front Wheel Style	Overall Width	Overall Length	Weight	Approx. HP
SLP 12DS30	12 ft. x 30 ft.	Dual Steel Wheels	12'6" (3.8m)	40' (12.2m)	7040 lbs. (3193kg)	115 - 140
SLP 12QR30	12 ft. x 30 ft.	Quad Rubber Tire	12'6" (3.8m)	40' (12.2m)	6640 lbs. (3012kg)	115 - 140
SLP 14DS30	14 ft. x 30 ft.	Dual Steel Wheels	14'6" (4.4m)	40' (12.2m)	7190 lbs. (3261kg)	130 - 155
SLP 14QR30	14 ft. x 30 ft.	Quad Rubber Tire	14'6" (4.4m)	40' (12.2m)	6790 lbs. (3080kg)	130 - 155
SLP 14DS	14 ft. x 40 ft.	Dual Steel Wheels	14'6" (4.4m)	50' (15.2m)	7490 lbs. (3398kg)	130 - 155
SLP 14QR	14 ft. x 40 ft.	Quad Rubber Tire	14'6" (4.4m)	50' (15.2m)	7090 lbs. (3216kg)	130 - 155
SLP 16DS30	16 ft. x 30 ft.	Dual Steel Wheels	16'6" (5.0m)	40' (12.2m)	7330 lbs. (3325kg)	150 - 175
SLP 16QR30	16 ft. x 30 ft.	Quad Rubber Tire	16'6" (5.0m)	40' (12.2m)	6930 lbs. (3144kg)	150 - 175
SLP 16DS	16 ft. x 40 ft.	Dual Steel Wheels	16'6" (5.0m)	50' (15.2m)	7630 lbs. (3461kg)	150 - 175
SLP 16QR	16 ft. x 40 ft.	Quad Rubber Tire	16'6" (5.0m)	50' (15.2m)	7230 lbs. (3280kg)	150 - 175
SLP 18DS30	18 ft. x 30 ft.	Dual Steel Wheels	18'6" (5.6m)	40' (12.2m)	7430 lbs. (3370kg)	170 - 190
SLP 18QR30	18 ft. x 30 ft.	Quad Rubber Tire	18'6" (5.6m)	40' (12.2m)	7030 lbs. (3189kg)	170 - 190
SLP 18DS	18 ft. x 40 ft.	Dual Steel Wheels	18'6" (5.6m)	50' (15.2m)	7730 lbs. (3507kg)	170 - 190
SLP 18QR	18 ft. x 40 ft.	Quad Rubber Tire	18'6" (5.6m)	50' (15.2m)	7330 lbs. (3325kg)	170 - 190

Includes hydraulic transport assembly (with (2) 12.5x16 tires and (2) 3-1/2x8" welded cylinders) • Lead hoses included

Dual steel units include (4) 30" diameter x 18" wide steel wheels with 1-11/16" flange bearings • Quad rubber tire units include (4) 9.5L x 15 rib implement tires on front end of machine in lieu of (2) steel wheels.

SCHMEISER FOLDING TRI-PLANE LAND LEVELERS

Model	Width x Length	Front Wheel Style	Overall Width	Overall Length	Weight	Approx. HP
SLP 20DSF	20 ft. x 40 ft.	Dual Steel Wheels	20'6" (6.2m)	50' (15.2m)	9250 lbs. (4196kg)	200-260
SLP 20QRF	20 ft. x 40 ft.	Quad Rubber Tire	20'6" (6.2m)	50' (15.2m)	8850 lbs. (4014kg)	200-260
SLP 22DSF	22 ft. x 40 ft.	Dual Steel Wheels	22'6" (6.9m)	50' (15.2m)	9360 lbs. (4246kg)	220-280
SLP 22QRF	22 ft. x 40 ft.	Quad Rubber Tire	22'6" (6.9m)	50' (15.2m)	8960 lbs. (4064kg)	220-280
SLP 24DSF	24 ft. x 40 ft.	Dual Steel Wheels	24'6" (7.5m)	50' (15.2m)	9470 lbs. (4296kg)	240-300
SLP 24QRF	24 ft. x 40 ft.	Quad Rubber Tire	24'6" (7.5m)	50' (15.2m)	9070 lbs. (4114kg)	240-300

All Units easily fold to an 11'0" transport width

SCHMEISER VARITRAK™ LAND LEVELERS

Model	Size	Transport Width	Overall Length	Weight	Approx. HP
SVT-16S	16' (4.9m)	16'6" (5.0m)	24' (7.3m)	3868 lbs. (1755kg)	125 - 145
SVT-16R	16' (4.9m)	16'6" (5.0m)	24' (7.3m)	3600 lbs. (1633kg)	125 - 145
SVT-20S	20' (6.1m)	13'6" (4.1m)	24' (7.3m)	4708 lbs. (2136kg)	150 - 175
SVT-20R	20' (6.1m)	13'6" (4.1m)	24' (7.3m)	4440 lbs. (2014kg)	150 - 175
SVT-24S	24' (7.3m)	13'6" (4.1m)	24' (7.3m)	4855 lbs. (2202kg)	180 - 210
SVT-24R	24' (7.3m)	13'6" (4.1m)	24' (7.3m)	4587 lbs. (2081kg)	180 - 210

Includes self-leveling compensation hitch, extra HD bushings in all high wear pivot points, including hitch and rear stabilizer arms.

Pivot assembly on rear wheels are comprised of 3" shaft, thrust bearings and bushings • Folding models include (2) 4"x 12" wing cylinders, (1) 3" x 36" rear frame cylinder and connecting hoses • Lead hoses are included

SCHMEISER PRECISION FINISH SCRAPERS

Model	Bucket Width x Height	Approx. HP	Weight
PFS 12	12'x22"	145-200	6800 lbs. (3048kg)
PFS 14	14'x22"	170-230	7000 lbs. (3175kg)
PFS 16	16'x22"	190-265	7200 lbs. (3266kg)
PFS 18	18'x22"	215-300	7400 lbs. (3357kg)
PFS 20*	20'x22"	240-330	8500 lbs. (3856kg)
PFS 22*	22'x22"	265-365	8720 lbs. (3955kg)
PFS 24*	24'x22"	300-400	8980 lbs. (4073kg)

* End tow transport available

SCHMEISER GRADER BLADES

Model	Overall Width	Transport Width	Overall Transport Length	Weight
SGB-20	20'2"	8'0"	24'8"	2100 lbs. (953kg)
SGB-30	30'2"	8'0"	34'8"	2600 lbs. (1179kg)
SGB-40	40'2"	8'0"	44'8"	3100 lbs. (1460kg)

Tires/wheels included (8) 205-75-15; hydraulic cylinders 4"x20". Hydraulic depth control standard on all units. Lead Hoses included.

Schmeiser reserves the right to make improvements in design and changes in specifications at any time without incurring any obligation to install them on units previously sold.

