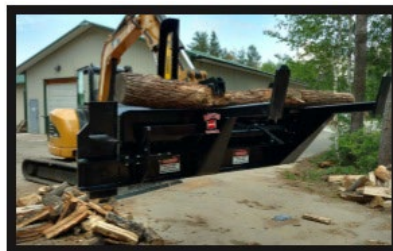


Are you standing around splitting wood? Why not do your wood splitting sitting down?



Features

- Simple to operate controls
- Sets up in minutes
- Auto chain oiler
- Multiple splitting head options available
- The most portable processor on the market
- 102" width – it can be legally transported attached to your skid steer
- Processes logs up to 10 feet in length and 16 inches in diameter

Advantages

- One-man operation
- Few moving parts
- Ready to go in minutes
- Stay-in-the-machine operation for safety and comfort
- Small, easy to store
- Can process right into a truck or trailer without a conveyor
- Totally portable; no set up or tear down to move or store

Easy to adjust and change cutting length
22" maximum cut length

Specifications

- Required minimum hydraulic flow – 15.5 Gallons Per Minute
- Required Minimum Pressure – 2850 PSI
- Length – 102 Inches
- Weight – 1310 lbs
- Universal Quick Attach Skid Steer Plate
- Universal wiring harness plugs into the power port of your machine

Uses

- Tree Services
- Firewood Operations
- Farmers
- Outdoor Boiler Owners
- Logging/Firewood
- Homeowner

Warranty

- 6 Months to 1 year Warranty
- Fast Factory Support

Productions

- 1 ½ - 2 Cords Per Hour

www.halversonwoodproducts.com

PRICED IN CANADIAN DOLLARS

PRICES ARE FOB HARRISTON, ONTARIO – DESIGN & PRICE ARE SUBJECT TO CHANGE WITHOUT NOTICE



Compare us to the competition and you'll see why wood cutting & splitting is experiencing a *REVOLUTION!*

HALVERSON WOOD PRODUCTS SPECIFICATIONS				
	HWP-125GS GRAPPLE	HWP-120 PROCESSOR	HWP-140B PROCESSOR	HWP-150 PROCESSOR
LENGTH	33"	Travel= 99" Working= 121"	Travel= 102" Working= 126"	Travel= 107" Working= 129"
WIDTH	56"	55"	55"	58"
HEIGHT	41"	51"	51"	57"
WEIGHT	770 lbs.	1280 lbs.	1450 lbs.	1638 lbs.
MATERIAL	3/8" & 5/8" Steel	1/4" Steel	3/8" Steel	3/8" Steel
HYDRAULICS				
-MINIMUM PRESSURE	2850	2850	2850	2850
-FLOW	15-20 gpm	14-18 gpm	15-20 gpm	15-20 gpm
-CONNECTIONS	1-Pressure, 1-Return 1-Case Drain	1-Pressure, 1-Return 1-Case Drain	1-Pressure, 1-Return 1-Case Drain	1-Pressure, 1-Return 1-Case Drain
MAX LOG DIAMETER	27"	15"	18"	22"
MIN LOG DIAMETER	3"	NA	NA	NA
MAX LOG LENGTH	NA	12'	12'	12'
MIN LOG LENGTH	NA	6'	6'	6'
FIREWOOD CUT LENGTHS	NA	Up to 22"	Up to 22"	Up to 22"
SAW BAR	31" (80cm) Harvester	25"(64cm)Harvester	25"(64cm)Harvester	31" (80cm) Harvester
SAW CHAIN	93 DL .404 pitch/18HX Series	78 DL .404 pitch/18HX Series	78 DL .404 pitch/18HX Series	93 DL .404 pitch/18HX Series
SAW MOTOR	Bent Axis Piston(Industrial)	Bent Axis Piston	Bent Axis Piston(Industrial)	Bent Axis Piston(Industrial)
SAW OILER	Automatic 2 Qt Tank	Automatic 2 Qt Tank	Automatic 2 Qt Tank	Automatic 2 Qt Tank
MAX SAW CUT	27"	15"	18"	22"
SPLITTER CYLINDER	NA	Standard 3.5" x 24" Stroke	Custom 3.5" x 24" Stroke	Custom 4.0" x 24" Stroke
SPLITTER FORCE	NA	28,850 @ 3000 psi	28,850 @ 3000 psi	36,138 @ 3000 psi
SPLITTING WEDGE	NA	4-way Fixed or 4-way or 6-way Manually Adjustable	4-way or 6-way Manually Adjustable	4-way or 6-way Hydraulically Adjustable
IN-FEED	Grapple	Sliding Trough Carries Log to Wedge	Sliding Trough Carries Log to Wedge	Sliding Trough Carries Log to Wedge
MOUNTING	Universal Quick Attach SAE Spec J2513	Universal Quick Attach SAE Spec J2513	Universal Quick Attach SAE Spec J2513	Universal Quick Attach SAE Spec J2513
MEASURING	NA	NA	Manual Moveable Device	Manual Moveable Device
SHIPPING SPECIFICATIONS				
ITEM	WEIGHT	DIMENSIONS	NMFC/ Class	
120 Processor w/ 4 Way Attachment	1380 lbs	96x36x48	133300-09/ 100	
120 Processor w/ 6 Way Attachment	1393 lbs	96x36x48	133300-09/ 100	
120 Processor w/ both Attachments	1447 lbs	96x36x48	133300-09/ 100	
120 Processor- FIXED	1380 lbs	96x36x48	133300-09/ 100	
140B Processor w/ 4 Way Attachment	1550 lbs	102x36x56	133300-08/ 175	
140B Processor w/ 6 Way Attachment	1563 lbs	102x36x56	133300-08/ 175	
140B Processor w/ both Attachments	1617 lbs	102x36x56	133300-08/ 175	
HWP 150 Processor w/ 4 Way Attachment	1738 lbs	107x44x64	133300-08/175	
HWP 150 Processor w/ 6 Way Attachment	1749 lbs	107x44x64	133300-08/175	
HWP 150 Processor w/ both Attachments	1816 lbs	107x44x64	133300-08/175	
125GS HD Grapple Saw	845 lbs	48x48x42	114225-01/ 100	
Grapple	735 lbs	48x48x42	114225-01/ 100	

Function

Requirements Hot pin, ground pin, 6 function

Hot pin, ground pin, 5 function

Hot pin, ground pin, 5 function

PRICED IN CANADIAN DOLLARS

PRICES ARE FOB HARRISTON, ONTARIO – DESIGN & PRICE ARE SUBJECT TO CHANGE WITHOUT NOTICE



PRICELIST

Model	Description	Price [CDN]
HWP-120	Processor/Fixed 4 way	\$15,042.00
HWP-120	Processor/Adjusts 4 way	\$15,963.00
HWP-120	Processor/Adjusts 6 way	\$16,274.00
HWP-140B	Processor/Adjusts 4 way	\$25,550.00
HWP-140B	Processor/Adjusts 6 way	\$25,862.00
HWP-150	Processor/Adjusts 4 way	\$31,988.00
HWP-150	Processor/Adjusts 6 way	\$32,300.00
HWP-125GS	Grapple Saw	\$14,165.00
HWP-WHS10	120 Cab Harness	\$695.00
HWP-WHS8	140//150 Cab Harness	\$695.00
No # available	3' Cab Harness Extension	\$173.00
No # available	6' Cab Harness Extension	\$190.00
No # available	Joystick Harness Kit	\$1,487.00
HWP-2111	120/140 6-way Wedge	\$1,268.00
HWP-2112	150 6-way Wedge	\$1,354.00

PARTS & ACCESSORIES

18HX078E	Harvester Chain Micro Chisel, 120/140	\$75.00
18H-KRF78DL	Carbide Steel Chain, 120/140	\$642.00
642RHFN104	Harvester 18HX Bar, 120/140	\$283.00
113690000	Oregon Elec. Sure Sharp 12V	\$419.00
SAWBIT	Sure Sharp Replacement Bit	\$11.00
802HSFN104	Harvestor Bar, 150	\$325.00
18HX093-E	Harvestor Chain, 150	\$106.00
18HKRF93DL	Carbide Chain, 150	\$642.00

PRICED IN CANADIAN DOLLARS

PRICES ARE FOB HARRISTON, ONTARIO – DESIGN & PRICE ARE SUBJECT TO CHANGE WITHOUT NOTICE