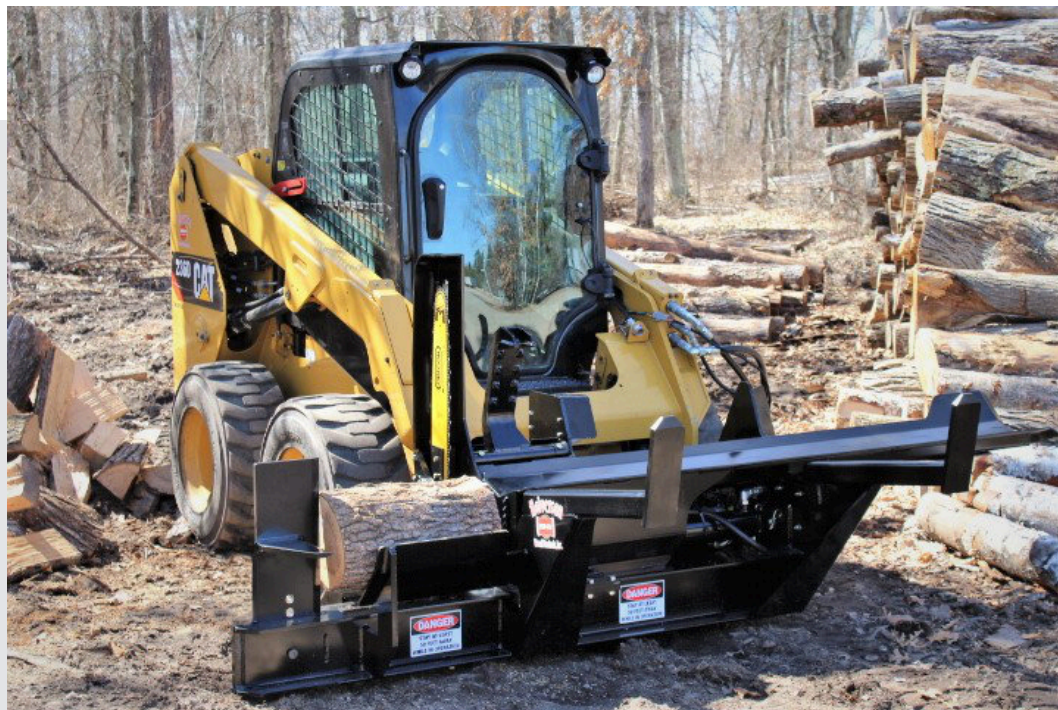


HWP-140B Firewood Processor

HWP-140B

Perfect for light commercial and residential use, the HWP-140B Firewood Processors truly makes the job hassle-free. When attached to a skid steer or other machine, it enables one person operating it to easily and efficiently perform wood cutting and splitting tasks. All from the comfort of the cab. Take the processor to the wood, instead of having to bring the wood to the processor! The mobility and efficiency of these Firewood Processors is a time saver!



The HWP-140B also comes in a Left Handed model to allow the operator better visibility with certain machines.

HWP-140B Firewood Processor

Specifications HWP-140B



| SPECS | VALUE |
|---------------------|---|
| LENGTH | Travel= 102" (259 cm) Working= 126" (320 cm) |
| WIDTH | 55" (140 cm) |
| HEIGHT | 51" (130 cm) |
| WEIGHT | 1450 lbs. (658 kg) |
| MATERIAL | 3/8" Steel |
| MINIMUM PRESSURE | 2850 (196 bar) |
| FLOW | 15-20 gpm (57 - 76 l/min) |
| CONNECTIONS | 1-Pressure, 1-Return 1-Case Drain |
| MAX LOG DIAMETER | 18" (46 cm) |
| MAX LOG LENGTH | 12' (3.66 m) |
| MIN LOG LENGTH | 4' (1.21 m) |
| FIREWOOD CUT LENGTH | Up to 22" (56 cm) |
| SAW BAR | 25" (64cm) Harvester |
| SAW CHAIN | 78 DL .404 pitch/18HX Series |
| SAW MOTOR | Bent Axis Piston(Industrial) |
| SAW OILER | Automatic 2 Qt (1.89 l) Tank |
| MAX SAW CUT | 18" (46 cm) |
| SPLITTER CYLINDER | Custom 3.5" x 24" Stroke |
| SPLITTER FORCE | 28,850 @ 3000 psi |
| SPLITTING WEDGE | 4-way or 6-way Manually Adjustable |
| IN-FEED | Sliding Trough Carries Log to Wedge |
| MOUNTING | Universal Quick Attach SAE Spec J2513 |
| MEASURING | Manual Moveable Device |



Made in Northern Minnesota