

HCC, inc.

AFTERMARKET PRICE GUIDE 2022

**Orbit™ Trac II Reels - Flip Reel Kit
Tines - Paddle Tine
Gateway® Sieves/Chaffers
Level II Reels
Level II / ML Service Parts**

HCC, inc. 1501 First Ave.
1501 First Ave
Mendota, IL, 61342
Effective January 1, 2022

(815) 539-1832
www.hccinc.com

Guide

Table of Contents

GENERAL	1-1
ORBIT™ TRAC II REELS	2-1
FLIP REEL KIT	3-1
TINES	4-1
PADDLE TINE	5-1
LEVEL II REELS	6-1
LEVEL II REELS - DIAGRAM & GUIDE SERVICE PARTS	7-1
CHANNEL BATS	8-1
NOTES	9-1



HCC, inc.

Aftermarket Price Guide

HCC, inc., a major innovator in the combine industry.



HCC, inc.

Ordering - Payment

HCC, inc. business hours are 7:00 AM - 4:00 PM (CST), Monday through Friday

Orders may be placed by the following:

E-mail: ctowne@hccinc.com

Direct Line: (815) 539-1832

Fax: (815) 539-3135

Mail: 1501 1st. Ave, Mendota, IL 61342

All orders must be placed through authorized HCC Distributors

Minimum Order: \$50.00

Prices and Specifications

Prices and specifications are subject to change without notice. All prices are F.O.B Mendota, IL.

This price guide supersedes all other HCC, inc. Aftermarket Price Guides.

Shipping - Shipping Claims

Orders in most instances will be shipped United Parcel Service (UPS) unless specified differently by the customer. Total size and weight of order can also cause the order to be shipped via commercial Truck. Shipping will be charged on all shipments. Please check immediately upon receipt and report any error at once. If a part of the shipment is missing or received in bad condition, you must note this fact on the carrier's receipt and make a claim with the carrier immediately. **Consignee is responsible for the damaged freight** if the bill of lading is signed upon delivery. Be certain to sign for the correct number of cartons.

Returns Policy

All merchandise being returned must have a Return Goods Authorization number (RGA#) which is obtained by contacting HCC, inc. Must provide the original PO and explanation of the return to receive the RGA#. All shipping cost are the responsibility of the Distributor unless it was determined there was a shipping error on HCC's part or a warranty issue. Returns must be in good condition, excluding warranty items. No returns will be accepted on special items ordered.

The following schedule will apply to all authorized returns (excluding shipping error and/or warranty items):

<u>Days of Delivery</u>	<u>Restocking Fee</u>
30 days	Full refund
30 days - 1 year	20%
1 year - 2 years	30%
2 years - 3 years	40%
After 3 years	No Returns

All warranty issues must follow HCC, inc procedures before returning the product. NO Exception. Obtain procedures by contacting HCC, inc. All merchandise shipped to HCC, inc without prior authorization is subject of refusal and may be returned freight collect.



HCC, inc.

HCC, inc., 1501 First Ave., Mendota, IL, 61342 - (815) 539-9371 - www.hccinc.com



HCC, inc.

HCC, inc.
1501 First Ave.
Mendota, IL 61342
Phone: (815) 539-9371
Fax: (815) 539-3135



HCC, inc.

Limited Warranty

HCC, inc. warrants each new HCC, inc. product to be free from defects in material and workmanship. This warranty is applicable only for the normal service life expectancy of the product or components, not to exceed 12 consecutive months from the date of delivery of the new HCC, inc. product to the original purchaser.

Genuine HCC, inc. replacement parts and components will be warranted for 90 days from date of purchase, or the remainder of the original equipment warranty period, whichever is longer. There is no warranty fortines.

Under no circumstances will this warranty cover any merchandise or components thereof, which, in the opinion of the company, has been subjected to misuse, unauthorized modifications, alteration, an accident, or if repairs have been made with parts other than those obtainable through HCC, inc.

Our obligation under this warranty shall be limited to repairing or replacing, free of charge to the original purchaser, any part that, in our judgment, shall show evidence of such defect, provided further that such part shall be returned within thirty (30) days from date of failure to HCC, inc., routed through the dealer and distributor from whom the purchase was made, transportation charges prepaid.

This warranty shall not be interpreted to render HCC, inc. liable for injury or damages of any kind or nature to person or property. This warranty does not extend to the loss of crops, loss because of delay in harvesting, or any expense or loss incurred for labor, substitute machinery, rental, or for any other reason.

Except as set forth above, **HCC, inc. shall have no obligation or liability of any kind on account of any of its equipment and shall not be liable for special or consequential damages. HCC, inc. makes no other warranty, expressed or implied, and specifically, HCC, inc. disclaims any implied warranty of merchantability or fitness for a particular purpose. Some states or provinces do not permit limitations or exclusions of implied warranties or incidental or consequential damages, so the limitations or exclusion in this warranty may not apply.**

This warranty is subject to any existing conditions of supply which may directly affect our ability to obtain materials or manufacture replacement parts.

HCC, inc. reserves the right to make improvements in design or changes in specifications at any time, without incurring any obligation to owners of units previously sold.

No one is authorized to alter, modify, or enlarge this warranty nor the exclusion, limitations, and reservations.

Effective with products delivered to original user on or after January 1, 2006.



HCC, inc.

Orbit™ Trac II Reels

OEM Replacement Parts



HCC, inc.



- **Positively places crop into auger**
- **Reduces or eliminates slugging**
- **Resists wrapping in green crop**
- **On-farm installation in a few hours**

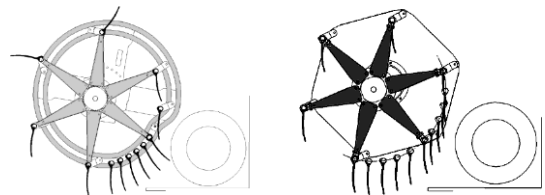
Harvest more crop in less time.

The Orbit™ Trac II Reel closes the gap between the reel and the auger to provide more control of crop entry into the header. By creating a continuous crop flow, the Orbit™ Trac II Reel provides the best overall performance, especially harvesting tough crops.

Construction and Operation

The Orbit™ Trac II Reel is tailored to today's high-performance headers. Crop flow is positive. Build-up and slugging are reduced.

The old-fashioned reel design has been replaced with a double-track system. The unique shape allows reel tines to swing directly past the auger. This pushes crop directly into the auger instead of dropping onto the header floor where it creates build-up. No more heavy build-up and no more slowing down to handle tough crops.



Orbit™ Trac II Reel Standard Reel

Installation is easy and can be done on equipment you already own. Designed as a retro-fit for all HCC tube-type reels built since 1990. ML 4-1/2" tine spacings or Level II 6" tine spacings are designed to work with the Orbit Kit. You can install it yourself in just a few hours, using the C-1096 Installation Instruction Manual.



HCC, inc.



HCC, inc.

HCC, inc., the original reel people and a
leading manufacturer of combine components in
North America.



HCC, inc.

Orbit Trac II Reel - Price List

Part No.	Description	2022 List Price
AGCO⁴		
031373	AGCO/MF 8200 Series, 25' & longer (DBL)	\$ 3,662.86
031396	AGCO/MF 8200 Series, 22' & shorter, (SGL)	\$ 1,921.78
031371	AGCO 400, 500, 800, 8000 Series 25' & longer (DBL)	\$ 3,665.05
031372	AGCO 400, 500, 800, 8000 Series 22' & shorter (SGL)	\$ 1,922.81
031388	MF Draper (DBL)	\$ 3,662.93
031384	MF 1859 (SGL)	\$ 1,921.87
CASEIH⁵		
031382	CASEIH1010-1020 - 1994 & prior - 22' & longer ¹	\$ 3,664.50
031383	CASEIH1010-1020 - 1994 & prior - 20' & shorter ¹	\$ 1,922.56
031380	CASEIH1010-1020 - 1995-1997 - 22' & longer ³	\$ 3,701.78
031381	CASEIH1010-1020 - 1995-1997 - 20' & shorter ³	\$ 1,941.97
031369	CASEIH1010-1020 - 1998 & Newer - 22' & longer ²	\$ 3,701.54
031370	CASEIH1010-1020 - 1998 & Newer - 20' & shorter ²	\$ 1,923.10
031376	CASEIH2010-2020 - 22' - 35' (DBL)	\$ 3,664.34
031377	CASEIH2010-2020 - 20' & shorter (SGL)	\$ 1,992.42
031533	CASEIH3020 - 20' & shorter (SGL)	\$ 1,959.78
031532	CASEIH3020 - 25' - 35' (DBL)	\$ 3,842.71
Honey Bee		
031385	Honey Bee (DBL)	\$ 3,698.52
John Deere		
031367	JD 900 Series - 25' & longer (DBL)	\$ 3,700.13
031368	JD 900 Series - 22' & shorter (SGL)	\$ 2,131.68
031374	JD 600 Series - Auger - 25' & longer (DBL)	\$ 3,698.15
031375	JD 600 Series - Auger - 22' & shorter (SGL)	\$ 1,942.16
031603	JD 640 Flex Draper - 40'	\$ 3,661.93
New Holland		
031376	NH 72C / 74C - 22' - 35' (DBL)	\$ 3,664.34
031377	NH 72C / 74C - 20' & shorter (SGL)	\$ 1,922.42
031378	NH 73C - 22' & longer (DBL)	\$ 3,664.97
031379	NH 73C - 20' & shorter (SGL)	\$ 1,922.76
031400	NH 971/ 973 - 25' & longer (DBL)	\$ 3,664.39
031401	NH 971/ 973 - 22' & shorter (SGL)	\$ 1,922.47
031532	NH CF740 - 22' & longer (DBL)	\$ 3,842.71
031533	NH CF740 - 20' & shorter (SGL)	\$ 1,959.78
Orbit Trac II Steel Track⁶		
031410	Orbit Trac II Steel Track Update Package	\$ 727.34

¹ For 1010 headers with S/N below JJC0200000,
For 1020 headers with S/N below JJC0215000 (1994 and prior).

² For 1010 headers with S/N JJC0300001 & CBJ023001 and up,
For 1020 headers with S/N JJC0315001 & CBJ023003 and up (1998 and later).

³ For 1010 headers with S/N JJC0200001 - JJC0300000,
For 1020 headers with S/N JJC0215001 - JJC0315000 (1995-1997).

⁴ Fits 400 Series and newer. 25' and longer fit 35'.

⁵ Verify single or double eccentric reel. ⁶ All Metal Track as of March 2019

Note: The OrbitTM Trac II Reel is designed **only** for Level II and ML HCC, inc. tube- type reels. They are original equipment on above headers since 1990.



HCC, inc.

HCC, inc., the original reel people and a leading manufacturer of combine components in North America.



HCC, inc.

Orbit Trac II Reel - Complete Reels Price List

Part No.	Description	2022 List Price	2022 Total List
AGCO			
031392	25' * & 30' Orbit Attaching Package	\$ 5,447.76	\$ 8,510.46
030561	25' Reel Bat Package - Level II	\$ 3,062.70	
030581	30' Reel Bat Package - Level II	\$ 3,545.16	\$ 8,992.82
031397	25' * & 30' Orbit Attaching Pkg. - 8200 Model	\$ 5,305.70	\$ 8,368.40
030561	25' Reel Bat Package - Level II	\$ 3,062.70	
030581	30' Reel Bat Package - Level II	\$ 3,545.16	\$ 8,850.86
031395	35' Orbit Attaching Package - 8200 Model	\$ 6,584.23	\$ 11,700.39
032082	35' Reel Bat Package - Level II - 8200 Model	\$ 5,116.16	
CASEIH 1020			
031387	25' * & 30' Orbit Attaching Package¹	\$ 5,685.70	\$ 8,748.40
030561	25' Reel Bat Package - Level II	\$ 3,062.70	
030581	30' Reel Bat Package - Level II	\$ 3,545.16	\$ 9,230.86
CASEIH 2020			
031393	25' * & 30' Orbit Attaching Package	\$ 5,676.95	\$ 8,677.43
030560	25' Reel Bat Package - Level II	\$ 3,000.48	
030580	30' Reel Bat Package - Level II	\$ 3,337.84	\$ 9,014.79
031398	35' Orbit Attaching Package	\$ 6,666.34	\$ 11,791.68
032023	35' Reel Bat Package - Level II	\$ 5,125.34	
CASEIH 3020 / CNH CF740			
031534	25' * & 30' Orbit Attaching Package	\$ 5,932.61	\$ 8,780.40
030562	25' Reel Bat Package - Level II	\$ 2,847.79	
030582	30' Reel Bat Package - Level II	\$ 3,569.64	\$ 9,502.25
031535	35' Orbit Attaching Package	\$ 7,170.92	\$ 12,296.26
032023	35' Reel Bat Package - Level II	\$ 5,125.34	
John Deere 600			
031389	25' * & 30' Orbit Attaching Package	\$ 5,469.19	\$ 8,316.98
030562	25' Reel Bat Package - Level II	\$ 2,847.79	
030582	30' Reel Bat Package - Level II	\$ 3,569.64	\$ 9,038.83
031402	35' Orbit Attaching Package	\$ 6,808.38	\$ 11,933.72
032023	35' Reel Bat Package - Level II	\$ 5,125.34	
John Deere 900			
031390	25' * & 30' Orbit Attaching Package	\$ 5,585.08	\$ 8,432.87
030562	25' Reel Bat Package - Level II	\$ 2,847.79	
030580	30' Reel Bat Package - Level II	\$ 3,337.84	\$ 8,922.92

¹ For headers with S/N JJC0315001 & CBJ023003 and later.

* If using on 25' - extra parts of 6 Reel Arms and 3 Anchor Plates



HCC, inc.

HCC, inc., 1501 First Ave., Mendota, IL, 61342 - (815) 539-9371 - www.hccinc.com



HCC, inc.

HCC, inc., the original reel people and a leading manufacturer of combine components in North America.



HCC, inc.

Orbit Trac II Reel - Service Parts - Brackets Price List

Part No.	Description	Orbit Reel Kit	2022	
			Item No.	List Price
AGCO				
783994	AGCO - Bracket LH	031371, 031372, 031392	29	\$ 182.29
783995	AGCO - Bracket RH	031371, 031392	28	\$ 182.29
784037	AGCO - Bracket LH	031388	29	\$ 209.63
784038	AGCO - Bracket RH	031388	28	\$ 209.63
784205	AGCO - Bracket LH	031373, 031395, 031396, 031397	29	\$ 145.75
784206	AGCO - Bracket RH	031373, 031395, 031397	28	\$ 145.75
784027	MF 1859 - Bracket LH	031384	29	\$ 190.59
CASEIH				
783990	CASEIH - Bracket LH	031369, 031370, 031387	29	\$ 187.42
783989	CASEIH - Bracket RH	031369, 031387	28	\$ 323.60
784015	CASEIH - Bracket LH	031380, 031381	29	\$ 276.93
784016	CASEIH - Bracket RH	031380	28	\$ 459.26
784024	CASEIH - Bracket LH	031382, 031383	29	\$ 172.97
784025	CASEIH - Bracket RH	031382	28	\$ 179.17
784365	CASEIH - Bracket LH	031532, 031533, 031534, 031535	29	\$ 310.88
784366	CASEIH - Bracket RH	031532, 031534, 031535	28	\$ 406.13
CASEIH/New Holland				
784022	CASEIH/NH Bracket LH	031376, 031377, 031393, 031398, 031400, 031401	29	\$ 168.22
784023	CASEIH/NH Bracket RH	031376, 031393, 031398, 31400	28	\$ 168.22
Honey Bee				
784028	HB - Bracket LH	031385	29	\$ 95.62
784029	HB - Bracket RH	031385	28	\$ 95.62
John Deere				
783980	JD900 Bracket LH	031367, 031390	29	\$ 166.06
783981	JD900 Bracket RH	031367, 031368, 031390	28	\$ 166.06
784009	JD600 Bracket LH	031374, 031375, 031389, 031402	29	\$ 287.61
784010	JD600 Bracket RH	031374, 031389, 031402	28	\$ 471.34
New Holland				
784017	NH Bracket LH	031378, 031379	29	\$ 197.85
784018	NH Bracket RH	031378	28	\$ 197.85

Note: See installation/assembly procedure and parts book (C-1096-04).





HCC, inc.

HCC, inc., the original reel people and a
leading manufacturer of combine components in
North America.



HCC, inc.

Orbit Trac II Reel - Service Parts - Price List

Part No.	Description		2022	
			Item No.	List Price
784064	Main Support Section - Orbit	Before Jan 1, 2010 - All Plastic	A	\$ 204.23
784281	Main Support Section - Orbit Trac II	After Jan 1, 2010 - lower steel track - upper plastic	A	\$ 194.09
483310	Front Support Section	All Orbit Kit Part number on Pg. 2-2	B	\$ 40.89
483311	Rear Support Section *	All Orbit Kit Part number on Pg. 2-2	C	\$ 43.59
483312	Connecting Plate*	All Orbit Kit Part number on Pg. 2-2	D	\$ 12.12
784056	Support Hub Assy - RH	031367, 031368, 031371, 031376, 031378, 031385, 031400	E	\$ 101.59
784057	Support Hub Assy - LH	031367, 031369-72, 031378-79, 031380-85, 031400-01, 031532-33	E	\$ 101.59
784058	Support Hub Assy - RH	031369, 031376, 031380, 031382, 031532	E	\$ 111.96
784059	Support Hub Assy - RH	031374	E	\$ 124.42
784060	Support Hub Assy - LH	031374, 031375	E	\$ 114.88
784061	Support Hub Assy - LH	031376, 031377	E	\$ 111.96
784062	Support Hub Assy - LH	031388	E	\$ 116.65
784063	Support Hub Assy - RH	031388	E	\$ 116.65
784455	Support Hub Assy - LH (JD 40' Draper only)	031602, 031603	E	\$ 207.08
784456	Support Hub Assy - LH (JD 25'-35' Draper only)	031602	E	\$ 218.20
784457	Support Hub Assy - RH (JD 40' Draper only)	031603	E	\$ 207.08
784143	Support Hub Assy - RH	031373	E	\$ 212.60
784144	Support Hub Assy - LH	031373	E	\$ 212.60
483993	Inner Section (Replaced 483238) *	All Orbit Kit Part number on Pg. 2-2	3	\$ 153.82
483994	Outer Section (Replaced 483239) *	All Orbit Kit Part number on Pg. 2-2	4	\$ 168.72
483996	RH Inner Action Section - Orbit (Replaced 483261)	Before Jan 1, 2010 - All Metal	5	\$ 160.82
483995	RH Outer Action Section - Orbit (Replaced 483241)	Before Jan 1, 2010 - All Metal	6	\$ 183.06
483470	RH Inner Action Section - Orbit TracII	031367-69, 031374, 031376, 031378, 031380, 031382, 031385, 034100, 031532, 031602-03	5	\$ 216.98
483471	RH Outer Action Section - Orbit TracII	031367-69, 031374, 031376, 031378, 031380, 031382, 031385, 034100, 031532, 031602-03	6	\$ 223.57
483997	LH Inner Action Section - Orbit (Replaced 483273)	Before Jan 1, 2010 - All Plastic Main Support	7	\$ 173.64
483998	LH Outer Action Section - Orbit (Replaced 483274)	Before Jan 1, 2010 - All Plastic Man Support	8	\$ 173.64
483468	LH Inner Action Section - Orbit TracII	031367, 031369-70, 031374-83, 031385, 031400-01, 031532-33, 031602-03	7	\$ 216.98
483469	LH Outer Action Section - Orbit TracII	031367, 031369-70, 031374-83, 031385, 031400-01, 031532-33, 031602-03	8	\$ 223.67
206071	Screw - Flathead Socket Cap M10X45) *		9	\$ 1.70
483275	Spacer (19.5 x 12.7 x 18.3) *		10	\$ 4.14
212412	Nut - Pre Torq. Hex Lock (M10) * Box of 100)	Required MOQ 100	11	\$.68
243719	Bearing - Roller Ball (ML, LII, Orbit) *	Required MOQ 75	12	\$ 28.83
481497	Spacer - Tubing (.75"X2.06") *		14	\$ 6.76
243686	Roller - Reel Support *		15	\$ 13.41
202190	Bolt - Hex Head (3/8-16X1.0")	JD 900 Series only	17	\$.53
483301	Bracket - Stop Top Reverse *		22	\$ 13.32
483302	Bracket - Stop Bottom Reverse *		23	\$ 15.77
202814	Bolt - Hex Head (M10X70) *		24	\$ 1.34

* Can be used for both Orbit Track and Orbit Trac II

Note: See installation/assembly procedure and parts book (C-1096-04).





HCC, inc.

HCC, inc., the original reel people and a leading manufacturer of combine components in North America.



HCC, inc.

Orbit Trac II Reel - Service Parts - Price List

Part No.	Description	Item No.	2022	
			Item No.	List Price
214244	Washer - Belleville (12mm) *		25	\$ 6.84
201145	Bolt - Carriage (M12X1.75X40)		30	\$ 8.18
202807	Bolt - Hex Head (M10X25) *		31	\$ 1.04
212404	Nut - Hex (M12X1.75)		32	\$ 1.36

* Can be used for both Orbit Track and Orbit Trac II

Note: See installation/assembly procedure and parts book (C-1096-04).





- Eliminates crop wrapping around bat tubes
- Designed to fit HCC tube type reels built since 1990

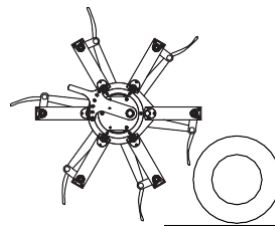
- To improve performance in some crop conditions, end shield may be desired.



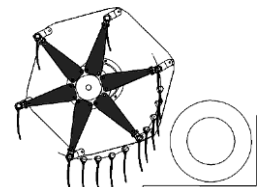
Construction and Operation

The Flip Reel Kit is designed to eliminate wrapping around bat tubes and is particularly effective in canola and other tall, stringy crops.

Installation is easy and can be done on equipment you already own. Designed as a retro-fit for all HCC tube-type reels built since 1990. ML 4-1/2" tine spacing or Level II 6" tine spacings are designed to work with the Orbit Kit. You can install it yourself in just a few hours using the Installation Instruction Manual.



Flip Reel



Standard Reel



HCC, inc.

HCC, inc., the original reel people and a leading manufacturer of combine components in North America.



HCC, inc.

Flip Reel Kit - Price List

Part No.	Description	2022 List Price
AGCO		
031510	AGCO 8200, 9250 - Auger 35'- 40' (DBL Ecc) *	\$ 2,707.42
031521	AGCO 8200, 9250 - Auger 22' & shorter (SGL Ecc)	\$ 1,460.69
031515	AGCO 400, 500, 800, 8000 Series, 25' & longer (DBL Ecc.)	\$ 2,490.54
031520	AGCO 400, 500, 800, 8000 Series, 22' & shorter (SGL Ecc.)	\$ 1,352.96
031511	AGCO 5000(36') , 8000 Series - Draper (DBL Ecc.)	\$ 2,558.40
031522	AGCO 8000 Series - Draper (SGL Ecc.)	\$ 1,386.91
CNH		
031516	CNH 1010,1020,3020 - 25' & longer (DBL Ecc.)	\$ 2,517.08
031520	CNH 1010,1020,3020 - 22' & shorter (SGL Ecc.)	\$ 1,352.96
031517	CNH 2010,2020 - 25' & longer (DBL Ecc.)	\$ 2,517.08
031523	CNH 2010,2020 - 22' & shorter (SGL Ecc.)	\$ 1,378.06
Honey Bee		
031357	HB - Clamp Mounting - 25' & longer (DBL Ecc.)	\$ 2,744.30
031513	HB - Bracket Mounting - 25' & longer (DBL Ecc.)	\$ 2,770.87
John Deere		
031519	JD900 Series - Auger - 25' & longer (DBL Ecc.)	\$ 3,327.10
031525	JD900 Series - STD Reel - 22' & shorter (SGL Ecc.)	\$ 1,993.20
031518	JD600 Auger only - JD 900 Draper only - 25' & longer	\$ 2,633.64
031524	JD600 Series - STD Reel - 22' & shorter (SGL Ecc.)	\$ 1,419.36
031365	JD625, JD630, JD635 - Draper (DBL Ecc.)	\$ 2,687.71
031351	JD640D, JD 645FD - Draper (Split)	\$ 2,677.02
New Holland		
031517	NH 72C,74C - 25' & longer (DBL Ecc.)	\$ 2,517.08
031523	NH 72C,74C - 22' & shorter (SGL Ecc.)	\$ 1,378.06
031515	NH 971,973,73C - 25' & longer (DBL Ecc.)	\$ 2,490.54
031520	NH 971, 973, 73C, 740CF - 22' & shorter (SGL Ecc.)	\$ 1,352.96
031516	NH 740CF - 25' & longer (DBL)	\$ 2,517.08

* Clamp mount only





HCC, inc.

HCC, inc., the original reel people and a leading manufacturer of combine components in North America.



HCC, inc.

Flip Reel Service Parts

Part No.	Description	Flip Kits	Item No.	2022 List Price
480750	Ring – Ecc. Control (Flip-ML6)		1	\$ 130.95
483475	Ring – Ecc. Center Arm Att. (Replaced 483411)		2	\$ 188.36
784249	Arm – Fixed Assy w/ Male-Female Ecc. Bearing		3	\$ 103.88
784250	Arm – Pivot Assy w/ Male-Female Ecc. Bearing		4	\$ 114.67
784251	Arm - Flip Reel Ecc.		5	\$ 89.17
243720	Bearing - Male Threaded Ecc. (Plastic)		6	\$ 3.43
243721	Bearing - Female Threaded Ecc. (Plastic)		7	\$ 2.65
204800	Screw - Socket Head Shoulder (M12X1.75X50)		8	\$ 5.60
483440	Spacer (19.05X12.70X26.00)		9	\$ 6.29
784185	Frame Assy - Ecc. Roller (Flip)	031513, 031515-17, 031519-20, 031525	10	\$ 195.64
784244	Frame Assy - Ecc. Roller (Flip)	031510, 031521	10	\$ 322.09
784289	Frame Assy - Ecc. Roller (Flip)	031511, 031522	10	\$ 216.07
784299	Frame Assy - Ecc. Roller (Flip)	031357	10	\$ 156.77
784307	Frame Assy - Ecc. Roller (Flip)	031516-17, 031523	10	\$ 209.68
784310	Frame Assy - RH Ecc. Roller (Flip)	031518	10	\$ 279.08
784312	Frame Assy - LH Ecc. Roller (Flip)	031518, 031524	10	\$ 265.15
784386	Frame Assy - LH Ecc. Roller (Flip)	031365, 031351	10	\$ 210.66
784387	Frame Assy - RH Ecc. Roller (Flip)	031351	10	\$ 213.32
784388	Frame Assy - RH Ecc. Roller (Flip)	031365	10	\$ 226.74
483555	Spacer - Fixed Arm (Flip)		11	\$ 14.18

Note: See instruction/assembly procedure and parts book (C-1158 Sept.2013) Page 7

End Shield - Will Fit All Flip Reels

Part No.	Description	2022 List Price
031591	End Shield - Double	\$ 868.84
031600	End Shield - Single	\$ 495.60
483473	Shield Section - Flip Reel End	\$ 31.26
483474	Arm Shield Att.	\$ 22.34

Note: Instruction C-1179 & C-1180



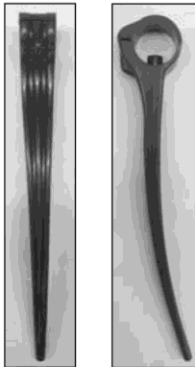
HCC, inc.

HCC, inc., 1501 First Ave., Mendota, IL, 61342 - (815) 539-9371 - www.hccinc.com

Construction

1 NEW 2017 - HEAVY DUTY TINE

Level II reels have a 1-3/8" (35 mm) tube with 1/2" (12.7 mm) hex holes spaced 6" (152 mm) apart. The heavy duty tines have a hex nub that fits into a hex hole in the tube. The overall length of the heavy duty tine is 11-7/8" (302 mm) and the strap width is 1-1/8" (29mm).



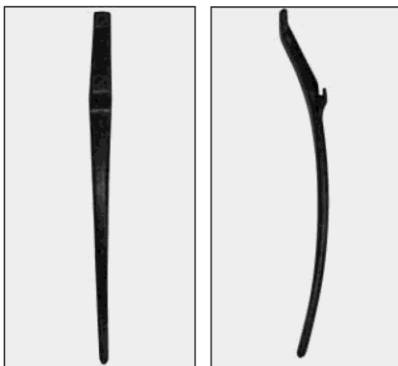
2 Level II reels have a 1-3/8" (35 mm) tube with 1/2" (12.7 mm) hex holes spaced 6" (152 mm) apart. The tines have a hex nub that fits into a hex hole in the tube.



3 ML Reels have a 1-3/8" (35 mm) tube with 3/8" (10 mm) round holes spaced approximately 4-1/2" (114 mm) apart. The tines have a round nub that fits into a round hole in the tube.



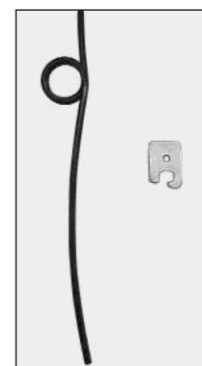
4 Polytine reels have a teardrop shaped metal bat with notches spaced 4-1/2" (114 mm) apart. The tines fit into notches and are fastened to the back of the metal bat approximately 3" (76 mm) above the notch.



5 The Love reel has a sheet metal bat and the tine fastens over the bottom edge. There is a projection that fits into a hole on the front of the bat approximately 2-1/2" (64 mm) above the edge. The Love reel is not manufactured by HCC, inc.



6 Wood bat reels have a wood bat with steel tines spaced approximately 4-1/2" (114 mm) apart. The tines are pressed into the bat and there is a metal clip riveted to the bat to provide support to the tine.





HCC, inc.

Tines

OEM Replacement Parts



HCC, inc.

Tines Price List

	Part No.	Reel Type	Description	MOQ	2022 List Price
1	224081	LII - 6"	Plastic Fgr. Tines - Heavy Duty ²	150 Box	\$ 4.13
	208100	LII - 6"	Screw for Heavy Duty Tines*	500 Box	\$.13
2	224047	LII - 6"	Plastic Fgr. Repair - Full Bat - Pipe Type*	130 Box	\$ 2.82
	224048	LII - 6"	Plastic Fgr. Repair - LH Bat - Pipe Type*	150 Box	\$ 3.05
	224049	LII - 6"	Plastic Fgr. Repair - RH Bat - Pipe Type*	150 Box	\$ 3.05
	224050	LII - 6"	Plastic Fgr. Repair - No Bat - Pipe Type*	150 Box	\$ 3.05
	208065	LII - 6"	Screw for plastic tines ¹ (3.5 x 1.3 x 16mm) *	500 Box	\$.13
3	224016	ML - 4.5"	Plastic Fgr. Repair - Full Bat - Pipe Type*	180 Box	\$ 2.27
	224017	ML - 4.5"	Plastic Fgr. Repair - RH Bat - Pipe Type*	250 Box	\$ 2.72
	224018	ML - 4.5"	Plastic Fgr. Repair - LH Bat - Pipe Type*	250 Box	\$ 2.72
	224019	ML - 4.5"	Plastic Fgr. Repair - No Bat - Pipe Type*	250 Box	\$ 3.56
	208065	ML - 4.5"	Screw for plastic tines ¹ (3.5 x 1.3 x 16mm) *	500 Box	\$.13
4	782018	Polytine	Plastic Fgr. Repair - 10 pk of 224014 w/ screws*	10 Pkg.	\$ 31.33
	782123	Polytine	Plastic Fgr. Repair - 500 pk of 224014 w/ screws*	500 Box	\$ 883.09
	208060	Polytine	Screw for plastic tines ¹ (8.32 x .75)		\$.44
5	782094	LOVE	Plastic Fgr. Repair - 10 pk of 224015 w/ screws*	10 Pkg.	\$ 40.73
	782124	LOVE	Plastic Fgr. Repair - 275 pk of 224015 w/ screws*	275 Box	\$ 743.05
	208064	LOVE	Screw for plastic tines ¹ (6 x .62)		\$.19
6	480056	Wood Bat	Steel Tine Bat		\$ 2.88
	480057	Wood Bat	Steel Tine Clip		\$.34

* Order as each - Must order MOQ quantity.

¹ Screws no longer offered with tines - order separately.² Fits any HCC 1-3/8" diameter tube with hex hub attachment.



HCC, inc.

Tines Service Parts

OEM Replacement Parts



HCC, inc.

Miscellaneous Tine Price List

Plastic Fingers

Part No.	Description	2022 List Price
007650	KIT-Plastic Aux. Pickup Tines (12 count of 224013 w/ hardware)	\$ 304.48
007651	KIT-Screws #10 for Polytines (50 Screws)	\$ 32.32
783128	KIT-Finger (6 EA - 224016, 224017, 224018 with screws)	\$ 64.74
224013	Finger - Plastic Aux.	\$ 7.47
224014	Finger - Polytine for Tear Drop Bats (Replaces 224012)	\$ 2.34
224015	Finger - Plastic Repair (JI)	\$ 4.40
277481	Finger - Plastic Aux. Retainer	\$ 4.86
277484	Finger - Plastic Aux. Bracket	\$ 13.50

Steel Fingers

Part No.	Description	2022 List Price
007559	KIT-Pkg. Aux. Steel Pickup (6 RH-780120 & 6 LH-780110)	\$ 501.71
007634	KIT-Pkg. Hdw Bushing Conversion Kit (Removing ML5 & ML6 Bat Fingers)	\$ 130.05
224051	Tine - Steel, Double Coil (Over Center Mount)	\$ 17.79
224052	Tine - Steel, Single Coil (Over Center Mount)	\$ 11.63
224065	Tine - Steel - LH (9", LVL II) (2004 and later)	\$ 5.12
224066	Tine - Steel - RH (9", LVL II) (2004 and later)	\$ 5.79
481087	Tine - Steel Aux. RH Pickup Finger	\$ 9.72
481088	Tine - Steel Aux. LH Pickup Finger	\$ 9.02
780026	Tine - Steel Aux. RH Pickup Finger Assy.	\$ 34.87
780027	Tine - Steel Aux. LH Pickup Finger Assy.	\$ 35.01
780110	Tine - Steel Aux. LH Pickup Finger Assy.	\$ 32.23
780120	Tine - Steel Aux. RH Pickup Finger Assy.	\$ 33.54
781344	Tine - Steel Aux. RH Assy. SP	\$ 47.25
781345	Tine - Steel Aux. LH Assy. SP	\$ 47.25



HCC, inc.

HCC, inc., 1501 First Ave., Mendota, IL, 61342 - (815) 539-9371 - www.hccinc.com



HCC, inc.

Paddle Tine

Tine Replacement System

OEM Replacement Parts



HCC, inc.

The “Paddle” is a cost-effective alternative to the standard pickup reel tine when crop conditions make harvesting difficult and inefficient.

Construction and Operation

The “Paddle’s” 6” width lifts and feeds crop that standard tines miss. With full crop contact, feeding into the header is positive and even. Increase your harvest in light, sparse, or special crop conditions.

The “Paddle” is designed to provide a complete sweep of the header with each reel rotation. By limiting the number of “Paddles” used, you save installation time and money.

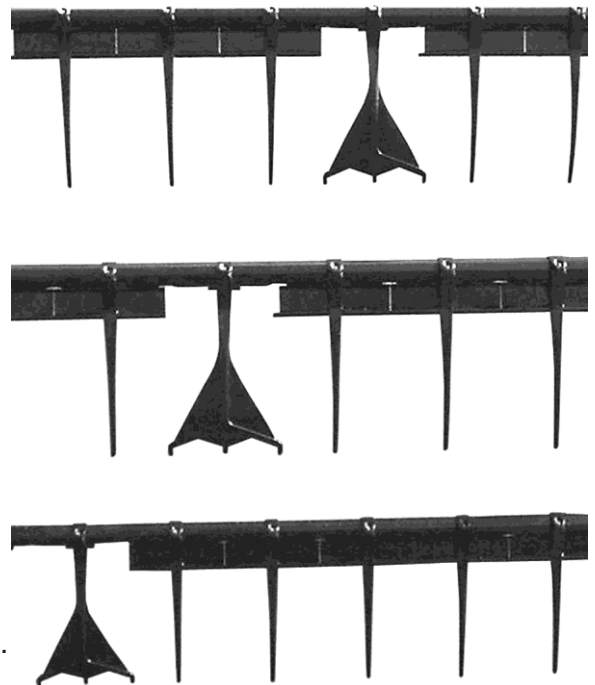


- **Increased harvest**
- **Improved feeding**
- **Cleaner cutterbar**
- **Faster harvesting**

Installation

Installation is fast and easy with HCC’s patented tine mounting system. Remove one screw and replace the standard tine with a “Paddle” tine. In less than one hour, you can easily replace enough standard tines with “Paddle” tines to dramatically improve your harvest.

Original tines can be used for spares or reinstalled, as needed.



HCC, inc.

HCC, inc., 1501 First Ave., Mendota, IL, 61342 - (815) 539-9371 - www.hccinc.com



HCC, inc.

HCC, inc., the original reel people and a leading manufacturer of combine components in North America.



HCC, inc.

Specifications

Recommended Number of Paddles (sweeps header completely with each rotation of the reel)					
Original Tine Spacing	Reel Width				
	18'	20'	25'	30'	36'
	Number of Paddles				
4.5"	40	40	50	60	N/A
6.0"	30	40	40	50	60

Note: Individual preferences or conditions may call for increasing the number of "Paddles" or altering the installation pattern.

Note: 4.5" spacing includes wood bat, polytine, and ML reels.
6.0" spacing is for the LII reel.

Parts and Price List

Paddles are **not** sold individually. Part numbers and prices are for a box of 10 paddles and includes screws and complete installation instructions.

Description	Part No.	MOQ	2022 List Price
For LII reel - 6.0" tine spacing ³	783846	1-299 boxes	\$ 143.02
		300 < boxes	\$ 96.54
For ML reel - 4.5" tine spacing ²	783845	1-299 boxes	\$ 141.36
		300 < boxes	\$ 95.42
For Polytine (Teardrop Bat) ¹	783950	1-99 boxes	\$ 153.30
		100 < boxes	\$ 121.94
For Wood Bat Reels	783949	1-49 boxes	\$ 166.54
		50 < boxes	\$ 121.94

¹ Polytine reels supplied from 1984-1989.

² ML reels supplied 1989-1999.

³ LII reels are standard since 1999/2000.





HCC, inc.

Reels

HCC Reels for Combines and Swathers



HCC, inc.

HCC Reels

HCC Reels excel in moving crops into the combine. New design concepts effectively divide, lift, and feed standing or down crops, including soybeans, canola, wheat, lentils, irrigated crops, rice, and milo.

Dependability and lower maintenance result from fewer parts and tough polymer tines made with exclusive material. HCC Reel users enjoy advantages such as 35-40% improved visibility, up to 25% less weight to decrease load on harvesting equipment, and superior bat strength versus sheet metal or aluminum. The HCC Reel provides lower cost, more effective crop movement, and less down time for combine and swather customers world-wide.

HCC Level II Reel Components

The **Reel Bundle** consists of the center tube and bat tubes with tines attached.

The **Reel Attaching Packages** consists of RH & LH Brackets, Drive Shafts, End Shields, Reel Arms for mounting Bat Tubes to Center Tube, Reel Arm Bearings, and all Hardware for assembly

Level II Reels

Level II bat tube reels were introduced in 1999.

- 8" center tubes for reels 15' to 30' (are as noted)
- 10" center tubes for reels (are as noted)

ML 5 and ML 6 Bat Reels

Will need to call for availability

ML (Metric Length) bat tube reels were introduced in 1990

Real Bundles and Att. Packages are no longer offered. What was offered in a Reel Bundle and Att. Package will now only be available as individual Service Parts. Bat Tubes will **NOT** be assembled with the Tines.



HCC, inc.



HCC, inc.

Level II Reels

Improving combine performance
from start to finish



HCC, inc.

Level II Combine Reel Bundles and Attaching Packages Price List

Description	Reel Bundle	2022 List Price	Attaching Package	2022 List Price	2022 Total List	
AGCO 400 Series through 8000	13' *	030513	\$ 1,792.36	031224	\$2,446.36	\$4,238.72
	15' *	030521	\$ 1,873.42	031224	\$2,446.36	\$4,319.78
	16' - MF-Gleaner 8000/FH Challenger (Auger) *	030525	\$ 2,014.78	031224	\$2,446.36	\$4,461.14
	18' - MF-Gleaner 8000/FH Challenger (Auger) *	030533	\$ 2,103.35	031224	\$2,446.36	\$4,549.71
	20' - MF-Gleaner 8000/FH Challenger (Auger) *	030541	\$ 2,318.21	031224	\$2,446.36	\$4,764.57
	22' *	031976	\$ 2,435.51	031225	\$3,089.05	\$5,524.56
	25' - MF-Gleaner 7000/8000/RH-FH Challenger (Auger) *	030561	\$ 3,062.70	031225	\$3,089.05	\$6,151.75
	25' - AGCO 5200 (Draper) *	030562	\$ 2,847.79	031249	\$3,445.25	\$6,293.04
	27' - Gleaner 7000 (Auger) *	030569	\$ 3,396.25	031225	\$3,069.05	\$6,485.30
	30' - AGCO5100/MF5200 (Draper) *	030582	\$ 3,569.64	031249	\$3,445.25	\$7,014.89
	30' - MF-Gleaner 7000/8000/RH-FH Challenger (Auger)*	030581	\$ 3,545.16	031225	\$3,089.05	\$6,634.21
	35' - MF-Gleaner 7000/8000/RH-FH Challenger (Auger)**	032082	\$ 5,116.16	031281	\$3,572.40	\$8,688.56
	AGCO 7200/8200/9250	20' - AGCO 7200/8200 *	030541	\$ 2,318.21	031328	\$2,294.76
22' - AGCO 8200 *		030550	\$ 2,649.92	031252	\$2,645.02	\$5,294.94
25' - AGCO 7200/8200/9250 *		030561	\$ 3,062.70	031329	\$2,935.03	\$5,997.73
30' - AGCO 7200/8200/9250 *		030581	\$ 3,545.16	031329	\$2,935.03	\$6,480.19
30' - AGCO 7200/8200/9250 (Draper)**		032138	\$ 4,185.34	031281	\$3,572.40	\$7,757.74
36' - AGCO 9250 (Auger) **		032082	\$ 5,116.16	031281	\$3,572.40	\$8,688.56
CCA - Caterpillar/Claas - Rigid Grain Head Only	25' *	030562	\$ 2,847.79	031175	\$3,155.00	\$6,002.79
	30' *	030582	\$ 3,569.64	031175	\$3,155.00	\$6,724.64
CASEIH - 1010 Header S/N JJC0300001 & CBJ023001 and later 1020 Header S/N JJC0315001 & CBJ023003 and later	15' *	030521	\$ 1,873.42	031220	\$2,621.63	\$4,495.05
	16' *	030527	\$ 1,918.64	031220	\$2,621.63	\$4,540.27
	18' *	030531	\$ 2,007.23	031220	\$2,621.63	\$4,628.80
	20' *	030541	\$ 2,318.21	031220	\$2,621.63	\$4,939.84
	22' *	031969	\$ 2,512.34	031216	\$3,064.55	\$5,576.89
	25' *	030561	\$ 3,062.70	031216	\$3,064.55	\$6,127.25
	25' (Steel) *	030961	\$ 5,069.71	031216	\$3,064.55	\$8,134.26
	30' *	030581	\$ 3,545.16	031163	\$3,384.94	\$6,930.10
30' (Steel) *	030981	\$ 6,067.39	031163	\$3,384.94	\$9,452.33	
CNH-CASEIH 2010/2020 Headers NH72C/NH74C	20' *	030540	\$ 2,576.40	031324	\$2,446.36	\$5,022.76
	25' *	030560	\$ 3,000.48	031323	\$2,756.45	\$5,756.93
	30' *	030580	\$ 3,337.84	031323	\$2,756.45	\$6,094.29
	30' (Steel) *	030980	\$ 5,980.10	031323	\$2,756.45	\$8,736.55
	35' **	032023	\$ 5,125.34	031514	\$4,040.68	\$9,166.02
CNH - CASEIH 3020 CNH-NH CF740	25' *	030562	\$ 2,847.79	031561	\$3,745.82	\$6,593.61
	30' *	030582	\$ 3,569.64	031561	\$3,745.82	\$7,315.46
	35' **	032023	\$ 5,125.34	031562	\$4,749.56	\$9,874.90
Honey Bee	25' *	030562	\$ 2,847.79	031227	\$2,889.26	\$4,641.63
	25' (Steel) *	032032	\$ 4,777.66	031227	\$2,889.26	\$6,318.97
	30' *	030582	\$ 3,569.64	031227	\$2,889.26	\$5,225.65
	30' (Steel) *	032033	\$ 5,710.86	031227	\$2,889.26	\$7,096.64
	36' **	032073	\$ 4,949.38	031265	\$3,411.34	\$6,884.46
	36' (Split) *	030534-LH	\$ 2,099.58	031334	\$4,109.78	\$8,176.42
		032034-RH	\$ 1,967.06			
	42' (Split) *	030546-LH	\$ 2,917.98	031334	\$4,109.78	\$9,487.96
		032046-RH	\$ 2,460.22			
	45' (Split) *	030552-LH	\$ 2,868.16	031326	\$4,485.29	\$10,242.85
		032102-RH	\$ 2,889.37			

* 8" Center Tube
** 10" Center Tube





HCC, inc.

Level II Reels

HCC Reels for Combines and Swathers



HCC, inc.

Level II Combine Reel Bundles and Attaching Packages Price List Continued

Description	Length	Reel Bundle	2022 List Price	Attaching Package	2022 List Price	2022 Total List
John Deere 600 Series Headers	15' *	030522	\$ 1,928.06	031507	\$2,495.87	\$4,423.93
	18' *	030534	\$ 2,099.56	031507	\$2,495.87	\$4,595.45
	20' *	030542	\$ 2,352.12	031507	\$2,495.87	\$4,847.99
	22' *	030550	\$ 2,649.92	031507	\$2,495.87	\$5,145.79
	25' (Draper) *	030562	\$ 2,847.79	031508	\$2,609.84	\$5,979.60
	25' (Draper S/T) *	032063	\$ 3,934.12	031508	\$3,131.81	\$6,596.50
	30' (Draper) *	032035	\$ 4,086.02	031508	\$3,131.81	\$7,217.83
	30' (Auger) ** or *	032035	\$ 4,080.02	031527	\$4,547.65	\$8,633.67
	30' (Draper S/T) **	032080	\$ 6,303.95	031508	\$3,131.81	\$9,435.76
	JD 35' (Auger) **	032023	\$ 5,125.34	031527	\$4,547.65	\$9,671.99
	JD 35' (Draper) **	032023	\$ 5,125.34	N/A	N/A	N/A
John Deere 900 Series Headers	15' *	031954	\$ 1,853.62	031503	\$2,662.38	\$4,516.00
	18' *	031955	\$ 1,972.56	031503	\$2,662.38	\$4,634.94
	20' *	031956	\$ 2,252.61	031503	\$2,662.38	\$4,914.89
	22' *	031957	\$ 2,543.45	031503	\$2,662.38	\$5,205.83
	25' (Auger) *	030562	\$ 2,847.79	031504	\$3,324.78	\$6,172.57
	25' (Draper) *	030562	\$ 2,847.79	031198	\$3,430.19	\$6,277.98
	25' (Draper S/T) *	032063	\$ 3,934.12	031198	\$3,430.19	\$7,364.31
	30' (Auger) *	030580	\$ 3,337.84	031504	\$3,324.78	\$6,662.62
	30' (Draper) *	030582	\$ 3,569.64	031198	\$3,430.19	\$6,999.83
	30' (Draper S/T) **	032080	\$ 6,303.95	031506	\$4,570.90	\$10,874.85
	36' Draper **	032076	\$ 4,808.76	031506	\$4,570.90	\$9,379.66
New Holland - 1995 and later with fore & aft adjust. Excludes: CF740/NH72C/NH74C Series Headers	16' *	030524	\$ 1,965.76	031223	\$2,641.74	\$4,607.50
	18' *	030532	\$ 2,386.04	031223	\$2,641.74	\$5,027.76
	20' *	030540	\$ 2,576.40	031223	\$2,641.74	\$5,218.14
	25' *	030560	\$ 3,000.48	031221	\$3,486.72	\$6,487.20
	30' *	030580	\$ 3,337.84	031199	\$3,507.46	\$6,845.30

Recommended Crate Charges for Shipping Reel Bat Packages (1) Per Crate***	
Reel Lengths	Cost Per Crate
20' / 25' Reel Bat Packages 30' Reel Bat Packages 35' / 36' Reel Bat Packages	Call for Quote

Plastic Tine Reels Estimated Weight				
Reel Length	Reel Bundle	Attaching Pkg.	Total	
20'	280 lbs.	283 lbs.	563 lbs.	28.2 lbs./ft.
25'	350 lbs.	317 lbs.	667 lbs.	26.7 lbs./ft.
30'	420 lbs.	337 lbs.	757 lbs.	25.2 lbs./ft.
36'	630 lbs.	392 lbs.	1022 lbs.	28.4 lbs./ft.

Note: Does not include the weight of the shipping crate.

* 8" Center Tube

** 10" Center Tube

Note: All reels come with plastic tines except where noted as steel (S/T) on Case IH, Honey Bee, and John Deere.



HCC, inc.

HCC, inc., 1501 First Ave., Mendota, IL, 61342 - (815) 539-9371 - www.hccinc.com

NOTES

Multiple horizontal lines provided for writing notes.



HCC, inc.

Level II Reels

Improving combine performance
from start to finish



HCC, inc.

Level II Reel Bundles in Numeric Price List

Part No.	Description	2022 List Price
030513	LII 13' Reel Bundle - Agco 400-8000 Series ¹	\$ 1,792.36
030521**	LII 15' Reel Bundle - Agco 400-8000 Series / CaselH 1010/1020* ¹	\$ 1,873.42
030522	LII 15' Reel Bundle - JD 615 ¹	\$ 1,928.06
030524	LII 16' Reel Bundle - NH 1995 and later ¹	\$ 1,965.76
030525	LII 16' Reel Bundle - MF-Challenger 8000/FH Challenger ¹	\$ 2,014.78
030527**	LII 16' Reel Bundle - CaselH 1010/1020* ¹	\$ 1,918.64
030531**	LII 18' Reel Bundle - CaselH 1010/1020* ¹	\$ 2,007.23
030532	LII 18' Reel Bundle - NH 1995 and later ¹	\$ 2,386.04
030533	LII 18' Reel Bundle - MF-Gleaner 8000 / FH Challenger ¹	\$ 2,103.35
030534	LII 18' Reel Bundle - HB 36' (LH Split) / JD 618 ¹	\$ 2,099.58
030540	LII 20' Reel Bundle - CNH-2010/2020 / NH 7200C / NH74C / NH1995 and later ¹	\$ 2,576.40
030541**	LII 20' Reel Bundle - Agco 7200/8200 / CaselH 1010/ 1020 / MF-Gleaner 8000/FH Challenger* ¹	\$ 2,318.21
030542	LII 20' Reel Bundle - JD 620 / HB 40' (LH Split) ¹	\$ 2,352.12
030546	LII 21' Reel Bundle - HB 42' (LH Split) ¹	\$ 2,917.98
030550	LII 22' Reel Bundle - AGCO 8200 / JD 622 ¹	\$ 2,649.92
030552	LII 22' Reel Bundle - Case-HB 45' (LH Split) ¹	\$ 2,866.19
030560	LII 25' Reel Bundle - CNH2010/2020 / NH7200C / NH74C / NH 1995 and later ¹	\$ 3,000.48
030561**	LII 25' Reel Bundle - Agco 7200/8200/9250 / CaselH 1010 /1020* /MF-Gleaner 7000/8000/RH-FH Challenger ¹	\$ 3,062.70
030562	LII 25' Reel Bundle - Agco 5200 /CCA-CAT/ CNH 3020 / CNH-NH C740 / HB / JD 625D / JD925AD ¹	\$ 2,847.79
030569	LII 27' Reel Bundle - Gleaner 7000A ¹	\$ 3,396.25
030580	LII 30' Reel Bundle - CNH 2010/2020 / JD 930A / NH 1995 and Later / NH 7200C / NH74C ¹	\$ 3,337.84
030581**	LII 30' Reel Bundle - Agco 7200/8200/9250/CaselH 1010/1020* /MF-Challenger 7000/8000 RH-FH Challenger ¹	\$ 3,545.16
030582	LII 30' Reel Bundle - Agco 5100 / CCA-CAT / CNH3020 /CNH-NH CF740/ HB / JD 630 / JD 930 / MF 5200 ¹	\$ 3,569.64
030961	LII 25' Reel Bundle - Steel - CaselH 1010 / 1020* ¹	\$ 5,069.71
030980	LII 30' Reel Bundle - Steel - CaselH 2010 / 2020 / NH 7200C / NH74C ¹	\$ 5,980.10
030981	LII 30' Reel Bundle - CaselH 1010 / 1020* ¹	\$ 6,067.39
030982	LII 30' Reel Bundle - JD 930 S/T ¹	\$ 5,168.35
031954	LII 15' Reel Bundle - JD 915 ¹	\$ 1,853.62
031955	LII 18' Reel Bundle - JD 918 ¹	\$ 1,972.56
031956	LII 20' Reel Bundle - JD 920 ¹	\$ 2,252.51
031957	LII 22' Reel Bundle - JD 922 ¹	\$ 2,543.45
031969**	LII 22' Reel Bundle - CaselH 1010 / 1020* ¹	\$ 2,512.34
031976	LII 22' Reel Bundle - Agco 400-8000 Series ¹	\$ 2,435.51
032023**	LII 35' Reel Bundle - CNH-2010/2020 / NH7200C/ NH74C / CNH-3020 / CNH-NH CF 740 / JD935D / JD635A ²	\$ 5,125.34
032032	LII 25' Reel Bundle - HB S/T ¹	\$ 4,777.66
032033	LII 30' Reel Bundle - HB S/T ¹	\$ 5,710.86
032034	LII 18' Reel Bundle - HB 36' (LH split) ¹	\$ 1,979.05
032035**	LII 30' Reel Bundle - JD 630A ²	\$ 4,086.02
032046	LII 21' Reel Bundle - HB 42' (RH Split) ¹	\$ 2,460.22
032063	LII 25' Reel Bundle - JD 625D S/T / JD926D S/T ¹	\$ 3,934.12
032073	LII 36' Reel Bundle - HB ²	\$ 4,949.38
032076**	LII 36' Reel Bundle - JD 936D ²	\$ 4,808.76
032080**	LII 30' Reel Bundle - JD 630D / JD 930D S/T ²	\$ 6,303.95
032082**	LII 35' Reel Bundle - Agco 9250A / MF-Gleaner 7000/8000 / RH-FH Challenger ²	\$ 5,116.16
032094	LII 24' Reel Bundle - JD 625 S/T ¹	\$ 5,533.34
032102	LII 22' Reel Bundle - Case-HB 45' (RH split) ¹	\$ 2,889.37
032105	LII 20' Reel Bundle - HB 40' (RH Split) ¹	\$ 2,527.08
032138**	LII 30' Reel Bundle - Agco 7200D/8200D/9250D ²	\$ 4,185.34

¹ 8" Center

² 10" Center

** 1010 S/N JJC0300001 & CBJ023001 and later.

1020 S/N JJC0315001 & CBJ023003 and later.





HCC, inc.

Level II Attaching Packages

HCC Reels for Combines and Swathers



HCC, inc.

Level II Combine Attaching Packages in Numeric Price List

Part No.	Description	2022 List Price
031163**	LII 30' Att. Pkg. - Case 1010, 1020	\$ 3,384.94
031175	LII 25' & 30' Att. Pkg. - Cat, Claas	\$ 3,155.00
031198	LII 25' & 30' Att. Pkg. - JD 900 Draper	\$ 3,430.19
031199	LII 30' Att. Pkg. - NH 1995 and later	\$ 3,507.46
031216**	LII 22' & 25' Att. Pkg. - Case 1010, 1020	\$ 3,064.55
031220**	LII 15', 16', 18', 20' Att. Pkg. - Case 1010, 1020	\$ 2,621.63
031221	LII 25' Att. Pkg. - NH 1995 and later	\$ 3,486.72
031223	LII 16', 18', 20' Att. Pkg. - NH 1995 and later	\$ 2,641.74
031224	LII 13', 15', 16', 18', 20' Att. Pkg. - Agco Srs4 (Auger)	\$ 2,446.39
031225	LII 22', 25', 27', 30' Att. Pkg. - Agco Srs4 (Auger)	\$ 3,089.05
031227	LII 25' & 30' Att. Pkg. - Honey Bee	\$ 2,889.26
031231	LII 42' & 36' Att. Pkg. - HB (Split) (One-piece Ecc. Shield)	\$ 3,985.66
031249	LII 25' & 30' Att. Pkg. - Agco/MF 5100/5200 (Draper)	\$ 3,445.25
031252	LII 22' Att. Pkg. - Agco 8200 - 22'	\$ 2,645.02
031265	LII 36' Att. Pkg. - HB 36'	\$ 3,411.34
031267	LII 36' Att. Pkg. - Agco Split Reel	\$ 4,279.81
031281	LII 30' & 35' Att. Pkg. - Agco 400 Series - 8000 - Agco 7200/8200/9250	\$ 3,572.40
031282	LII 35' Att. Pkg. - Case 2010, 2020	\$ 3,635.51
031323	LII 25' & 30' Att. Pkg. - Case 2010, 2020	\$ 2,756.45
031324	LII 20' Att. Pkg. - Case 2010, 2020	\$ 2,446.30
031326	LII 45' Att. Pkg. - HB Split	\$ 4,485.29
031328	LII 20' Att. Pkg. - Agco 8200	\$ 2,294.76
031329	LII 25' & 30' Att. Pkg. - Agco 8200	\$ 2,935.03
031334	LII 42' & 36' Att. Pkg. - HB (Split) (Aux Tines and Six-piece Ecc. Shield) newer	\$ 4,109.78
031503	LII 15', 18', 20', 22' Att. Pkg. - JD 900	\$ 2,662.38
031504	LII 25' & 30' Att. Pkg. - JD 900	\$ 3,324.78
031505	LII 36' Att. Pkg. JD	\$ 4,448.42
031506	LII 30' & 36' Att. Pkg. - Draper - JD 900	\$ 4,570.90
031507	LII 15', 18', 20', 22' Att. Pkg. - JD 600	\$ 2,495.87
031508	LII 25' & 30' Att. Pkg. - JD 600	\$ 3,131.81
031514	LII 35' Att. Pkg. - Case 2010, 2020	\$ 4,040.68
031527	LII 35' Att. Pkg. - JD 600	\$ 4,547.65
031561	LII 24' 30' Att. Pkg. - CNH 3020, CNH-NH CF740	\$ 3,745.82
031562	LII 34' Att. Pkg. - CNH 3020, CNH-NH CF740	\$ 4,749.56
031624	LII 25' Att. Pkg. - HB	\$ 3,711.00

** 1010 S/N JJC0300001 & CBJ023001 and later.
1020 S/N JJC0315001 & CBJ023003 and later.



HCC, inc.

HCC, inc., 1501 First Ave., Mendota, IL, 61342 - (815) 539-9371 - www.hccinc.com



HCC, inc.

Reels

Improving combine performance
from start to finish

HCC, inc.

Miscellaneous Reel Parts

Part No.	Description	MOQ	2022
			List Price
Plastic Reel Bearings for Wood Bat and Polytine Reels¹			
243310	Bearing - Cap (Use w/ 780189 Arm)		\$ 1.55
243320	Bearing - Base (use w/ 780189 Arm)		\$ 2.51
204110	Bolt - U (1/4" - 20UNCX1.88") (Use w/ 243310/20)		\$ 2.88
212111	Nut - Top Lock for 204110 (Requires 2) (.25"-20UNC-2B)		\$ 1.85
243325	Bearing - Reel Arm Use w/ 481265 Arm (Required 2) (Plastic)		\$ 1.52
Reel Bearings for ML and LII Reels²			
224056	Strap - Thrust Retainer LII only		\$ 5.12
243736*	Bearing - Reel Arm use w/ 481775 (Req. 2) for ML&L2 (Plastic) (Replaced 243714)	500	\$ 1.84
481776*	Strap - Bearing (Req. 1)	250	\$ 2.11
243720	Bearing - Male Threaded Ecc. (Plastic)	500	\$ 3.43
243721	Bearing - Female Threaded Ecc. (Plastic)	500	\$ 2.65
243325	Bearing - Reel Arm Use w/ 481265 Arm Required 2 (Plastic)		\$ 1.52
Reel Arms			
780189	Arm - Reel Assy. (Wood Bat)		\$ 20.89
481265	Arm - Reel (Polytine Reel - Teardrop Bat)		\$ 21.16
481775	Arm - Reel (ML & LII Tube Type)		\$ 20.16
End Shields³			
481997	Shield - End for ML, LII (6 used per reel < 22) ¹		\$ 29.03
483643	Shield - Ecc. End for Polytine (6 used per end) (Replaced 481996)		\$ 46.68
482398	Shield - Closed End Ecc. For ML, LII, (Replaced 481953)		\$ 283.48
Miscellaneous			
480750	Ring - Ecc. Control (Flip-ML6)		\$ 130.95
243719*	Bearing - Roller Ball (ML,LII,Orbit) *	75	\$ 28.83
243761*	Bearing - Roller Ball Flat Faced (Wood-Polytine) (Replaced 243330)	80	\$ 30.60
Nut and Bolt			
202812*	Bolt - Hex Head M10	100	\$ 1.12
212412*	Nut - Top Lock M10	100	\$.68

* MUST ORDER IN BOX QUANTITIES.

¹ Wood bat reels sold until 1983. Polytine reels sold 1984-1989. Approximate date, actual OEM date may differ.² ML reels sold 1990-1998. LII reels sold 1999-forward. Approximate date, actual OEM date may differ.³ Use 481997 for ML and LII.

Use 483643 for Polytine and all DEERE and Agco 8200.

Use 482398 for ML and LII, except for DEERE and Agco 8200.





HCC, inc.

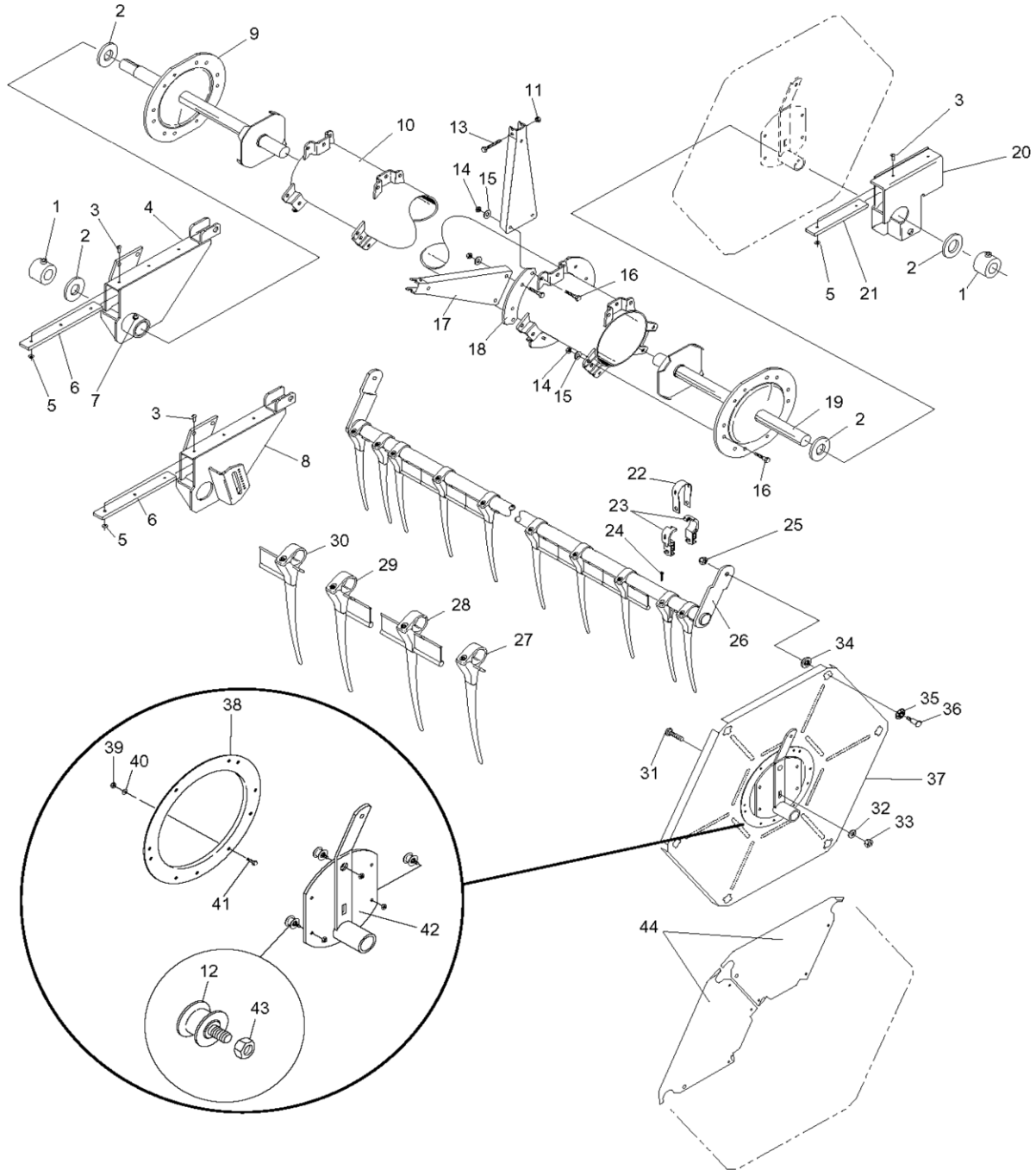
Level II Reels

DIAGRAM AND GUIDE



HCC, inc.

Service Parts Level II Pick-Up Reel



HCC, inc.

HCC, inc., 1501 First Ave., Mendota, IL, 61342 - (815) 539-9371 - www.hccinc.com



HCC, inc.

Level II Reels Diagram and Guide



HCC, inc.

Service Parts Level II Pick-Up Reel

Part No.	Description	Item No.	MOQ	2022
				List Price
782217	Collar Assy Lock w/ set screws (metric)	1		\$ 36.88
214430	Washer - Flat (1.62"IDX2.25"ODX11Ga)	2	100	\$ 1.27
~	Rivet - Break Mandrel Blind (specific brackets only)	3		~
~	Bracket - Right-Hand (varies per customer)	4		~
~	Washer - Flat #10 (specific brackets only)	5		~
~	Strip-Wear (specific brackets only)	6		~
218110	Fitting - Straight Grease (.125NPT Male)	7		\$ 1.53
~	Bracket - Right-Hand (varies per customer)	8		~
~	Shaft - Driving End (varies per customer)	9		~
~	Tube - Center (varies per customer)	10		~
212412*	Nut - Prev. Torq. Hex Lock (M10)	11	100	\$.68
243719*	Bearing - Roller Ball (ML,LII,Orbit)	12	75	\$ 28.83
202812*	Bolt - Hex Head (M10 x 1.5 x 50)	13	100	\$ 1.12
212412*	Nut - Prev. Torq. Hex Lock (M10)	14	100	\$.68
214233	Washer - Helical Spring Lock (M10)	15		\$.34
202808	Bolt - Hex Head (M10X1.5X30)	16		\$.71
481775	Arm - Reel (ML & LII Tube Type)	17		\$ 20.16
482681	Plate - Assy Anchor (8" Ctr. Tube)	18		\$ 9.53
~	Shaft - Driven End (varies per customer)	19		~
~	Bracket - Left-Hand (varies per customer)	20		~
~	Wear Strip (specific brackets only)	21		~
481776*	Strap - Bearing (Req. 1)	22	250	\$ 2.11
243736*	Bearing - Reel Arm use w/ 481775 (Req. 2) for ML&L2 (Plastic) (Replaces 243714)	23	500	\$ 1.84
208065*	Screw - ML 4.5" Plastic Tine (3.5X1.3X16mm)	24	500	\$.13
212413	Nut - Prev. Torq. Hex w/Plastic Insert (M12)	25		\$ 1.72
~	Tube - Welded Bat (varies per customer)	26		~
224050*	Plastic Fgr. Repair - No Bat - Pipe Type - LII 6"	27	150	\$ 3.05
224047*	Plastic Fgr. Repair - Full Bat - Pipe Type - LII 6"	28	130	\$ 2.82
224049*	Plastic Fgr. Repair - RH Bat - Pipe Type - LII 6"	29	150	\$ 3.05
224048*	Plastic Fgr. Repair - LH Bat - Pipe Type - LII 6"	30	150	\$ 3.05
201145	Bolt - Carriage (M12X1.75X40)	31	50	\$ 8.18
214244	Washer - Belleville (12mm)	32		\$ 6.84
212404	Nut - Hex (M12X1.75)	33		\$ 1.36
243721	Bearing - Female Threaded Ecc. (Plastic)	34		\$ 2.65
243720	Bearing - Male Threaded Ecc. (Plastic)	35		\$ 3.43
204800	Screw - Socket Head Shoulder (M12X1.75X50)	36	165	\$ 5.60
482398	Shield - Closed End Ecc. For ML, LII, (Replaced 481953)	37		\$ 283.48

Note: Parts and numbers shown are for the Level II Pick-Up Reel.

Note: See instruction/assembly procedure and parts book (C-1062-02) Page 10-11

* Order as each - Must order in MOQ quantity.





HCC, inc.

Level II Reels Diagram and Guide



HCC, inc.

Service Parts Level II Pick-Up Reel Continued

Part No.	Description	Item No.	MOQ	2022 List Price
480750	Ring - Ecc. Control (Flip-ML6)	38		\$ 130.95
212402	Nut - Hex (M8X1.75X6)	39		\$.24
214232	Washer - Helical Spring Lock (M8)	40		\$.11
202861	Bolt - Hex Head (M8X1.25X20)	41		\$ 1.95
~	Frame - Roller Eccentric (varies per customer)	42		~
212412*	Nut - Prev. Torq. Hex Lock (M10)	43	100	\$ 0.66
482399	Shield - End Closed ML (Replaces 482115)	44		\$ 58.86
481997	Shield - End Open for ML, LII (6 used per reel < 22')	44		\$ 29.03

Note: Parts and numbers shown are for the Level II Pick-Up Reel.

Note: See instruction/assembly procedure and parts book (C-1062-02) Page 10-11

* Order as each - Must order in MOQ quantity.



HCC, inc.

HCC, inc., 1501 First Ave., Mendota, IL, 61342 - (815) 539-9371 - www.hccinc.com



HCC, inc.

Level II Reels Service Parts



HCC, inc.

Level II Service Parts Price List (by Product Category Alphabetically)

Part No.	Description	Reel Part Numbers	2022 List
ARM REELS			
481775	Arm - Reel (ML & LII Tube Type)	ALL Reel PN's	\$ 20.16
483169	Arm - Reel	031281, 031562, 031514, 031265, 031056, 031527	\$ 25.77
BEARINGS			
243325	Bearing - Reel Arm (REQ 2 - Plastic)	031328, 031281, 031198	\$ 1.52
243340	Bearing - Super Oilite (1.75"ODX1.562"IDX1.5")	031163, 031198-99, 031216, 031249, 031281, 031323-24, 031328, 031506-08, 031527, 031514, 031561-62	\$ 8.05
243719	Bearing - Roller Ball (ML,LII,Orbit)	ALL Reel PN's	\$ 28.83
243720	Bearing - Male Threaded Ecc. (Plastic)	ALL Reel PN's	\$ 3.43
243721	Bearing - Female Threaded Ecc. (Plastic)	ALL Reel PN's	\$ 2.65
243736	Bearing - Reel Arm (Req. 2) (Replaces 243714)	ALL Reel PN's	\$ 1.84
481776	Bearing - Strap (Req. 1)	ALL Reel PN's	\$ 2.11
BRACKETS			
782035	Bracket - RH Ecc. Adj. (Motor Support Bracket)	031503, 031504	\$ 381.65
782419	Bracket - LH End	31504	\$ 181.17
782421	Bracket - RH End Assy.	031503	\$ 274.14
782422	Bracket - RH End	031503, 031504	\$ 186.54
782563	Bracket - LH End	031224, 031225	\$ 198.45
782564	Bracket - RH End	031225	\$ 190.19
782571	Bracket - LH End Assy	031224, 031225	\$ 333.85
782572	Bracket - RH End Assy	031224	\$ 388.56
782573	Bracket - RH End Assy.	031225	\$ 326.11
782576	Bracket - RH End	031224	\$ 244.10
782636	Bracket - RH End	031503	\$ 202.99
782689	Bracket - LH End (HB Direct Drive)	031227, 031265	\$ 140.18
782691	Bracket - RH End (HB Direct Drive)	031227, 031265	\$ 140.18
782797	Bracket - RH End Assy.	031231, 031334	\$ 189.47
782894	Bracket - LH End	031199, 031221	\$ 210.74
782895	Bracket - LH End Assy.	031223, 031221, 031199	\$ 387.27
782896	Bracket - RH End	031199	\$ 210.74
782897	Bracket - RH End Assy.	031221, 031199	\$ 387.27
782899	Bracket - RH End Assy (SGL Ecc.)	031223	\$ 394.02
783249	Bracket - LH End	031220, 031163	\$ 233.12
783250	Bracket - RH End	031163	\$ 429.71
783251	Bracket - RH End	031220	\$ 469.62
783252	Bracket - LH End Assy.	031220, 031216, 031163	\$ 245.07
783253	Bracket - RH End Assy.	031216, 031163	\$ 439.57
783254	Bracket - RH End Assy.	031120	\$ 608.48
783360	Bracket - RH End	031175	\$ 185.58
783361	Bracket - LH End	031775	\$ 167.90
783362	Bracket - RH End Assy Claas Rigid	031175	\$ 245.40
783363	Bracket - LH End Assy Claas Rigid	031175	\$ 227.42
783755	Bracket - RH End	031252	\$ 177.70
783917	Bracket - LH End	031252, 031249, 031267	\$ 157.11
783918	Bracket - RH End	031252, 031249, 031267	\$ 157.11
783936	Bracket - LH End	031507, 031508, 031527	\$ 282.90
783937	Bracket - RH End	031508, 031527	\$ 457.84
783962	Bracket - RH End (SGL Ecc.)	031507	\$ 476.19
784087	Bracket - RH End	031323, 031514	\$ 127.64
784088	Bracket - LH End	031324, 031323, 031514	\$ 127.64





HCC, inc.

Level II Reels Service Parts



HCC, inc.

Level II Service Parts Price List Continued (by Product Category Alphabetically)

Part No.	Description	Reel Part Numbers	2022 List
BRACKETS (CONTINUE)			
784090	Bracket - RH End	031324	\$ 350.85
784363	Bracket - LH End	031561, 031562	\$ 312.24
784364	Bracket - RH End	031561, 031562	\$ 386.78
FRAME - ROLLER			
783329	Frame - Roller Ecc. Assy. (218.5mm tube)	031163, 031216, 031323-24, 031514, 031561-62	\$ 285.75
783469	Frame - Roller LH Ecc. Assy.	031198, 031506	\$ 186.17
783478	Frame - Roller RH Ecc. Assy	031198, 031506	\$ 199.18
783730	Frame - Roller Ecc. Assy.	031175, 031199, 031221, 031223-24, 031225, 031227, 031265, 031503-04	\$ 220.25
783735	Frame - Roller Ecc. w/ Shield Assy.	031163, 031216, 031220, 031323, 031514, 031561-62	\$ 254.76
783919	Frame - Roller Assy.	031249, 031252	\$ 256.87
783940	Frame - Roller Ecc. Assy	031507, 031508, 031527	\$ 149.71
783941	Frame - Roller Ecc. Assy.	031508, 031527	\$ 162.74
783976	Frame - Roller Ecc. Assy.	031328, 031329, 031281	\$ 376.81
HARDWARE			
201145	Bolt - Carriage (M12X1.75X40) (Orbit & Reels)	ALL Reel PN's (except PN 031198)	\$ 8.18
201150	Bolt - Carriage SD SQ (3/8-16X1.125)	031252	\$.71
202025	Bolt - Hex Head .31-18NC X3.25"	031220, 031216, 031163	\$.96
202190	Bolt - Hex Head Machine (3/8 x 16 x 1.00)	031503, 031504	\$.53
202600	Bolt - Hex Head Machine Screw (5/16-18X.50)	031503, 031504, 031507, 031508, 031527	\$.27
202807	Bolt - Hex Head (M10 x 1.5 x 25) (Orbit & Reel)	031163, 031216, 031220, 031223-4, 031252, 031323-4, 031328, 031514, 301527, 031561-2	\$ 1.04
202808	Bolt - Hex Head (M10X1.5X30)	ALL Reel PN's	\$.71
202809	Bolt - Hex Head (M10X1.5X35)	031562, 031265, 031281, 031506, 031514	\$.73
202812	Bolt - Hex Head (M10X1.5X50)	ALL Reel PN's	\$ 1.12
202819	Bolt - Hex Head (M12X1.75X25)	031561, 031562	\$ 1.32
202826	Bolt - Hex Head Cap Screw (M12 x 1.75 x 80)	031323, 031324, 031514, 031561, 031562	\$ 6.52
202861	Bolt - Hex Head (M8X1.25X20)	ALL Reel PN's	\$ 1.95
202890	Bolt - Hex Head Flange (M8X25MM)	030961, 030980, 030981, 032032, 032033, 032063, 032080	\$.53
202901	Bolt - Hex Head (M6)	031198	\$.32
204101	Bolt - Round Hex HD Shank (1/2"- 20NFX2.5) (MOQ 120)	031249, 031252	\$ 4.86
781055	Collar - Lock	ALL Reel PN's	\$ 21.08
782217	Collar - Assy Lock w/ set screws (Metric)	031175, 031224-25, 031227, 031249, 031252, 031265, 031281, 031328, 031514, 031562	\$ 36.88
218110	Fitting - Straight Grease (.125NPT Male)	031163, 031198-99, 031216, 031249, 031281, 031323-24, 031328, 031506-08, 031514, 031517, 031561-62	\$ 1.53
277267	Handle - Grip	031198, 031506	\$ 4.61
263381	Hose Assembly - Hydraulic	031220, 031216, 031163	\$ 51.78
212451	Insert - Metric Thread (Steel Reel- M8X1.25)	030961, 030980, 030981, 032032, 032033, 032063, 032080	\$.94
275253	Indicator Reel Center	031329, 031281	\$ 3.25
219190	Key- Square (.75"X2.0")	031252	\$ 14.63
212145	Nut - Serr. Flange Hex .312-18UNC	031163, 031216, 031220	\$.29
212150	Nut - Hex (3/8-16 14H812)	031252, 031503, 031504	\$.10
212196	Nut - Prev. Torq. Flg. Lock (1/2"-13NC x 2B)	031503, 031504, 031507, 031508, 031527	\$ 1.66
212239	Nut - Prev. Torq Flg. Lock (1/2"-20NF)	031249, 031252	\$ 1.04
212402	Nut - Hex (M8X1.75X6)	ALL Reel PN's	\$.24
212404	Nut - Hex (M12X1.75)	ALL Reel PN's	\$ 1.36



HCC, inc.

HCC, inc., 1501 First Ave., Mendota, IL, 61342 - (815) 539-9371 - www.hccinc.com



HCC, inc.

Level II Reels Service Parts



HCC, inc.

Level II Service Parts Price List Continued (by Product Category Alphabetically)

Part No.	Description	Reel Part Numbers	2022 List
HARDWARE (CONTINUE)			
212410	Nut - Prev. Torq. Hex Lock (M6)	031198	\$.20
212412	Nut - Prev. Torq. Hex Lock (M10)	ALL Reel PN's	\$.68
212413	Nut - Prev. Torq. Hex w/Plastic Insert (M12)	ALL Reel PN's	\$ 1.72
212459	Nut - Weld (Steel Reel - M10)	030961, 032032, 032033	\$ 2.96
277266	Pad - Reel Slide	031198, 031506	\$ 5.79
783477	Pin - Pitch Adjust	031198, 031506	\$ 26.77
216143	Pin - Spring M3X24	031198, 031506, 031508	\$.46
482681	Plate - Assy Anchor (8" Ctr. Tube)	ALL Reel PN's	\$ 9.53
482815	Plate - Assy. Anchor - (10" Ctr Tube)	031281, 031562, 031514, 031265, 031506, 031527	\$ 17.92
483537	Plate - Cylinder Mounting	031561, 031562	\$ 8.44
277694	Plug - Dom Plastic (Steel Reel - 12.7ODX10.3)	030961, 030981, 030980, 032032, 032033, 032063, 032080	\$.20
222041	Ring - Snap	031504, 031198, 031506, 031508, 031527	\$ 5.20
480750	Ring - Ecc. Control (Flip-ML6)	031163, 031198-99, 031216, 031221, 031223, 031249, 031281, 031323-24, 031328, 031506-8, 031514, 031527, 031561-62	\$ 130.95
243686	Roller - Reel Support - Plastic (.79"IDX1.5"ODX1.97")	031323-24, 031503-04, 031507-08, 031514, 031527, 031561-62	\$ 13.41
202075	Screw - Hex Head Machine (1/2-13 x 3.25)	031503, 031504, 031507, 031508, 031527	\$ 2.11
204800	Screw - Socket Head Shoulder (M12X1.75X50)	ALL Reel PN's	\$ 5.60
208065	Screw - Tines (3.5 x 1.3 x 16mm) * (REQ 500 Box)	ALL Reel PN's	\$.13
214420	Spacer - Tubing (.81"ODX1.25"IDX11GA)	031249, 031252, 031220	\$ 4.57
481497	Spacer - Tube (.75"X.53"X2.06")	031323-24, 031503-04, 031507-08, 031514, 031527, 031561-62, 031527	\$ 6.76
482281	Spacer - Tubing	031220, 031216, 031163	\$ 10.71
225097	Spring	031198, 031506, 031508	\$ 3.64
224056	Strap - Thrust Retainer (Steel Reel-LII only)	030961, 030981, 030980, 032032, 032033, 032063, 032080	\$ 5.12
214120	Washer - Hel Spring lock .32	031503, 031504, 031507, 031508, 031527	\$.07
214130	Washer - Hel Spring lock .75	031252, 031503, 031504	\$.09
214232	Washer - Helical Spring Lock (M8)	031163, 031198-9, 031216, 031221, 031223, 031249, 031323-24, 031527-8, 031506-08, 031514, 031561-2	\$.11
214233	Washer - Helical Spring Lock (M10)	ALL Reel PN's	\$.34
214244	Washer - Belleville (M12) (Orbit & Reels)	ALL Reel PN's (except 031198, 031056)	\$ 6.84
214249	Washer - Contact (Steel- Reel - 8Med)	030961, 030980 030981, 032032, 032033, 032063, 032080	\$.52
214270	Washer - Flat (.440X1.0X.078)	031252, 031503, 031504	\$.15
214360	Washer - Flat .75X.875X.078	031503, 031504, 031507, 031508, 031527	\$.10
214430	Washer - Flat (1.62"IDX2.25"ODX11Ga)	ALL Reel PN's	\$ 1.27
214568	Washer - Flat 15X24	031198, 031506, 031508	\$.48
SHAFTS			
783210	Shaft - Driven End	031198, 031507, 031508, 031527	\$ 349.53
783211	Shaft - Driving End	031503, 031504	\$ 383.39
783275	Shaft - Driving End	031163, 031216, 031323-24, 031561	\$ 263.97
783373	Shaft - Driving End	031175	\$ 406.76
783377	Shaft - Driving End	031198, 031508	\$ 383.39
783386	Shaft - Driving End (LVLII)	031225	\$ 460.26
783397	Shaft - Driven End (LVLII)	031163, 031175, 031199, 031216, 031220-21, 031223-25, 031252, 031323-24, 031503-04, 031561	\$ 206.51





Level II Reels Service Parts



Level II Service Parts Price List Continued (by Product Category Alphabetically)

Part No.	Description	Reel Part Numbers	2022 List
SHAFTS (CONTINUE)			
783472	Shaft - Driving End	031507	\$ 383.39
783496	Shaft - Driving End	031223, 031221, 031199	\$ 450.37
783558	Shaft - Driving End	031220, 031216, 031163	\$ 392.54
783618	Shaft - Driven End	031224	\$ 573.22
783649	Shaft - Driving End	031199, 031221, 031223, 031227	\$ 355.54
783834	Shaft - Driving End	031249, 031252, 031328	\$ 288.64
783916	Shaft - Driven End	031249	\$ 243.50
783927	Shaft - Driving End	031265	\$ 508.97
783953	Shaft - Driving End	031281	\$ 563.54
783954	Shaft - Driven End	031281	\$ 456.23
784117	Shaft - Driving End	031329	\$ 321.09
784118	Shaft - Driven End	031328, 031329	\$ 243.90
784221	Shaft - Driven End	031562, 031514	\$ 696.61
784284	Shaft - Driving End	031506, 031527	\$ 623.29
784285	Shaft - Driven End	031506, 031527	\$ 451.72
784824	Shaft - Driven End w/PLT Bulkhead (Replaced 784220)	031562, 031514	\$ 828.77
SHIELD			
481997	Shield - End Open for ML, LII (6 used per reel < 22')	031216, 031220, 031223-24, 031252, 031328, 031503-04, 031507-08	\$ 29.03
482398	Shield - Closed End Ecc. For ML, LII, (Replaced 481953) All one Piece	031163, 031199, 031221, 031223, 031216, 031249, 031323-24, 031506-08, 031514, 031527, 031561-62	\$ 283.48
482399	Shield - End Closed ML (Replaces 482115) Individual	031324	\$ 58.86
782267	Shield - Ecc. Assembly (w/6 ea. of 483643)	031328, 031329, 031281, 031198	\$ 492.72
782883	Shield - Ecc. Assy. End 6 Bat	031175, 031199, 031221, 031223-25, 031227, 031265, 031503-04	\$ 985.89
782884	Shield - Ecc. Assy. w/243720, 243721 (Enclosed)	ALL Reel PN's (except 031198, 031227, 031281, 031328-29)	\$ 493.04
783328	Shield - Ecc. Assy End	031163, 031216, 031220, 031323, 031514, 031561-62	\$ 1,032.30
783921	Shield - Ecc Assy. End 6 Bat	031249, 031252, 031249, 031267	\$ 987.69
483643	Shield - Ecc. End for Polytime, (6 used per end)	031198, 031281, 031328	\$ 37.86
SUPPORT			
783473	Support - RH Slide Assy. (DBL Ecc.)	031198, 031506	\$ 856.36
783474	Support - LH Slide Assy (True Size)	031198, 031506	\$ 514.54
784120	Support - Reel Assy	031328	\$ 187.88
TUBES - WELDED BAT			
783195	Tube - Welded Bat (25'- 7316.0 NRL LVLII)	030562	\$ 200.13
783196	Tube - Welded Bat (30'- 8840.00 NRL LVLII)	030582, 032035	\$ 231.11
783220	Tube - Welded Bat (30'- 8687.6 NRL LVLII)	030580	\$ 228.32
783241	Tube - Welded Bat (30'-8763.8 NRL LVLII)	030581, 032138	\$ 225.25
783244	Tube - Welded Bat (25'-7239.8 NRL LVLII)	030561	\$ 191.07
783322	Tube - Welded Bat (36'-10628.2 NRL LVLII)	032076	\$ 280.40
783348	Tube - Welded Bat (20'- 5842.0 NRL LVLVII)	030542	\$ 125.70
783395	Tube - Welded Bat (22'- 6451.6 NRL LVLII)	030550	\$ 167.33
783414	Tube - Welded Bat (18'- 5156.20 NRL LVLII)	030533	\$ 114.91
783480	Tube - Welded Bat RH Ecc. (15'- 4318.0 NRL LVLII)	031954	\$ 113.84
783481	Tube - Welded Bat RH Ecc. (18'- 5080.0 NRL LVLII)	031955	\$ 119.78
783483	Tube - Welded Bat (20'- 5689.6 NRL LVLII)	031956	\$ 144.37
783484	Tube - Welded Bat RH Ecc. (22' - 6299.2 NRL LVLII)	031957	\$ 178.81
783513	Tube - Welded Bat (16'- 4546.6 NRL LVLII)	030525	\$ 114.13
783515	Tube - Welded Bat (16'- 4699.0 NRL LVLII)	030527	\$ 114.34
783517	Tube - Welded Bat (21'- 6070.6 NRL LVLII)	030545, 030545D, 030945	\$ 167.09





HCC, inc.

Level II Reels Service Parts



HCC, inc.

Level II Service Parts Price List Continued (by Product Category Alphabetically)

Part No.	Description	Reel Part Numbers	2022 List
TUBES - WELDED BAT (CONTINUE)			
783539	Tube - Welded Bat (25' - 7163.6 NRL LVLII)	030560	\$ 193.05
783560	Tube - Welded Bat (15' - 4241.8 NRL LVLII)	030521	\$ 130.68
783562	Tube - Welded Bat (18' - 5003.8 NRL LVLII)	030531	\$ 115.99
783564	Tube - Welded Bat (20' - 5765.8 NRL LVLII)	030541	\$ 137.63
783566	Tube - Welded Bat (22' - 6477.8 NRL LVLII)	031969	\$ 160.70
783591	Tube - Welded Bat (16' - 4470.4 NRL LVLII)	030524	\$ 114.06
783593	Tube - Welded Bat (18' - 5080.0 NRL LVL II)	030532	\$ 114.78
783594	Tube - Welded Bat (20' - 5689.6 NRL LVLII)	030540	\$ 125.55
783612	Tube - Welded Bat (15' - 4318.0 NRL LVLII)	030522	\$ 113.84
783614	Tube - Welded Bat (13' - 2332.2 NRL LVLII)	030513	\$ 112.99
783616	Tube - Welded Bat (27' - 7849.4 NRL LVLII)	030569	\$ 225.58
783632	Tube - Welded Bat S/T SGL (25' 7316.0 NRL LVLII)	032063	\$ 210.34
783633	Tube - Welded Bat S/T SGL (25' 7316.0 NRL LVLII)	032063	\$ 210.34
783634	Tube - Welded Bat (22' - 6325.4 NRL LVLII)	031976	\$ 144.46
783652	Tube - Welded Bat S/T (30' - 8840.0 NRL LVL II)	032080	\$ 246.99
783653	Tube - Welded Bat S/T (30' - 8840.0 NRL LVL II)	032080	\$ 246.99
783732	Tube - Welded Bat LH Ecc. (21' - 6146.8 NRL LVL)	030546	\$ 167.18
783733	Tube - Welded Bat LH Ecc. (18' - 5232.4. NRL. LVLII)	030534	\$ 131.38
783736	Tube - Welded Bat RH Ecc. (18' - 5232.4 NRL, LVLII)	032034	\$ 131.38
783737	Tube - Welded Bat RH Ecc. (21' - 6146.8 NRL)	032046	\$ 154.22
783750	Tube - Welded Bat S/T (25' - 7239.8 NRL LVLII)	030961	\$ 191.11
783751	Tube - Welded Bat S/T (25' - 7239.8 NRL LVLII)	030961	\$ 191.11
783752	Tube - Welded Bat S/T (30" - 8763.8 NRL LVLII)	030981	\$ 218.75
783753	Tube - Welded Bat S/T (30" - 8763.8 NRL LVLII)	030981	\$ 218.75
783769	Tube - Welded Bat (36' - 10704.3 NRL LVLII)	032073	\$ 309.44
783816	Tube - Welded Bat S/T (30' 8687.6 NRL LVLII)	030980	\$ 237.83
783817	Tube - Welded Bat S/T (30' 8687.6 NRL LVLII)	030980	\$ 237.83
783827	Tube - Welded Bat (35' - 10353.2 NRL LVLII)	032023	\$ 280.40
783952	Tube - Welded Bat (35' - 10276.0 NRL LVLII)	032082	\$ 280.40
784068	Tube - Welded Bat RH (22'-6540.92 for 45' Split)	032093	\$ 167.33
784073	Tube - Welded Bat S/T (25' - 7316.0 NRL LVLII)	032032	\$ 210.34
784074	Tube - Welded Bat S/T (25' - 7316.0 NRL LVLII)	032032	\$ 210.34
784096	Tube - Welded Bat S/T (30' - 8840.0 NRL LVL II)	032033	\$ 218.88
784097	Tube - Welded Bat S/T (30' - 8840.0 NRL LVL II)	032033	\$ 218.88
784120	Tube - Reel Support Assy	031328	\$ 187.88
784149	Tube - Welded Bat LH Ecc. (5909.59)	JD 640 FD (Up to Nov. 2015)	\$ 186.31
784150	Tube - Welded Bat RH Ecc. (5909.59)	JD 640 FD (Up to Nov. 2015)	\$ 186.31
TUBES - CENTER			
783212	Tube - Center 8"- (25' - 73160.0 NRL LVLII)	030562, 032032, 030562, 032063, 032094	\$ 1,134.19
783240	Tube - Center 8"- (30' - 8763.8 NRL LVLII)	030581, 030981	\$ 1,372.31
783245	Tube - Center 8"- (25' - 7239.8 NRL LVLII)	030561, 030961	\$ 1,142.47
783335	Tube - Center 8"- (22' - 6299.2 RH ECC. NRL LVLII)	031957	\$ 1,139.62
783340	Tube - Center 8"- (30' - 8840.00 NRL LVLII)	030582, 032033	\$ 1,385.09
783344	Tube - Center 8"- (20' - 5842. NRL LVLII)	030542	\$ 903.96
783384	Tube - Center 8"- (30' - 8687.6 NRL LVL II)	030580, 030980	\$ 1,362.00
783394	Tube - Center 8"- (22' - 6451.6 NRL LVLII)	030550	\$ 1,070.81
783410	Tube - Center 8"- (18' - 5156.2 NRL LVLII)	030533	\$ 908.21
783454	Tube - Center 8"- (15' - 4318.0 NRL LVLII)	031954, 030522	\$ 753.35
783471	Tube - Center 8"- (20' - 5689.6 NRL LVLII)	030540, 031956	\$ 910.01
783482	Tube - Center 8"- (18' - 5080.00 NRL LVLII)	031955, 030532	\$ 765.01
783514	Tube - Center 8"- (16' - 4546.6 NRL LVLII)	030525	\$ 754.49



HCC, inc.

Level II Reels Service Parts



HCC, inc.

Level II Service Parts Price List Continued (by Product Category Alphabetically)

Part No.	Description	Reel Part Numbers	2022 List
TUBES - CENTER (CONTINUE)			
783516	Tube - Center 8" - (16' - 4699.00 NRL LVLII)	035027	\$ 783.16
783540	Tube - Center 8" - (25' - 7163.5 NRL LVLII)	030560	\$ 1,074.32
783561	Tube - Center 8" - (15" - 4241.8 NRL LVLII)	030521	\$ 752.98
783563	Tube - Center 8" - (20" - 5765.8 BRL LVLII)	030531	\$ 784.66
783565	Tube - Center 8" - (20' - 5765.8 NRL LVL II)	030541	\$ 918.32
783567	Tube - Cener 8" - (22'-6477.8 NRL LVLII)	031969	\$ 1,230.50
783592	Tube - Center 8" - (16' - 4470.4 NRL LVLII)	030524	\$ 754.13
783615	Tube - Center 8" - (13' - 3632.2 NRL LVLII)	030513	\$ 728.50
783617	Tube - Center 8" - (27' - 7849.4 NRL LVLII)	030569	\$ 1,274.02
783635	Tube - Center 8" - (22' - 6325.4 NRL LVLII)	031976	\$ 1,070.24
783731	Tube - Center 8" - (18' - 5232.4 NRL LVLII)	030534	\$ 856.71
783828	Tube - Center 10" - (35' - 10352.2 NRL LVLII)	032023	\$ 2,460.01
783850	Tube - Center 10" - (30' - 8829.2 NRL LVLII)	032035, 032080	\$ 2,050.28
783925	Tube - Center 10" - (36' - 10658.1 NRL LVLII)	032076	\$ 2,460.01
783926	Tube - Center 10" - (36' - 10734.2 NRL LVLII)	032073	\$ 2,460.01
783951	Tube - Center 10" - (35' - 10276.0 NRL LVLII)	032082	\$ 2,477.98
784151	Tube - Center 6" - (40' Split -18.4' - 5591.0)	JD 640 FD Split (All Models)	\$ 867.76
784215	Tube - Center 10" - (30' - 8753.00 NRL LVLII)	032138	\$ 1,953.48



HCC, inc.

HCC, inc., 1501 First Ave., Mendota, IL, 61342 - (815) 539-9371 - www.hccinc.com



HCC,
inc.

Channel Bats



HCC, inc.

Part No.	Description	2022 List Price
BAT - CHANNEL		
781788	Channel - Bat Sheet Metal Assy. 82.00" *	\$ 160.59
781796	Channel - Bat Sheet Metal Assy. 67.00" *	\$ 131.22
781836	Channel - Bat Sheet Metal Assy. 80.50" *	\$ 157.65
781838	Channel - Bat Sheet Metal Assy. 58.75" *	\$ 115.08
781839	Channel - Bat Sheet Metal Assy. 67.75" *	\$ 132.71
781841	Channel - Bat Sheet Metal Assy. 64.75" *	\$ 126.84
781842	Channel - Bat Sheet Metal Assy. 76.75" *	\$ 150.34
781843	Channel - Bat Sheet Metal Assy. 73.75" *	\$ 144.47
781845	Channel - Bat Sheet Metal Assy. 81.75" *	\$ 160.13
781846	Channel - Bat Sheet Metal Assy. 88.75" *	\$ 173.84
781847	Channel - Bat Sheet Metal Assy. 91.75" *	\$ 179.72
781848	Channel - Bat Sheet Metal Assy. 84.50" *	\$ 165.49
* 781942	Channel - Bat Sheet Metal Assy. 55.75" *	\$ 109.21
781943	Channel - Bat Sheet Metal Assy. 79.75" *	\$ 139.47
781944	Channel - Bat Sheet Metal Assy. 87.75" *	\$ 153.61
782038	Channel - Bat Sheet Metal Assy. 62.50" *	\$ 109.28

*** CAN ONLY BE ORDERED TWICE A YEAR.**

ORDER IN APRIL FOR MAY DELIVERY

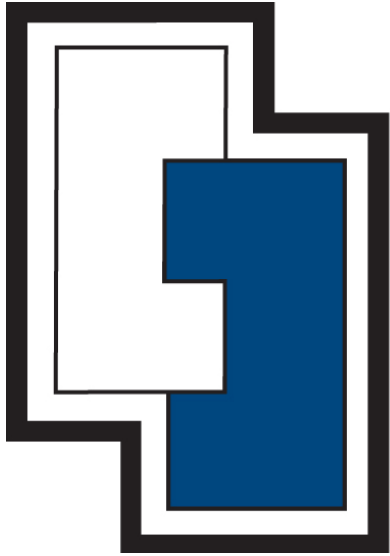
ORDER IN AUGUST FOR SEPTEMBER DELIVERY



HCC, inc.

HCC, inc., 1501 First Ave., Mendota, IL, 61342 - (815) 539-9371 - www.hccinc.com

NOTES



HCC, inc.

AFTERMARKET PRICE GUIDE 2022

**Orbit™ Trac II Reels - Flip Reel Kit
Tines - Paddle Tine
Gateway® Sieves/Chaffers
Level II Reels
Level II / ML Service Parts**

HCC, inc.
1501 First Ave.
Mendota, IL, 61342
Effective January 1, 2022

(815) 539-9371
www.hccinc.com