

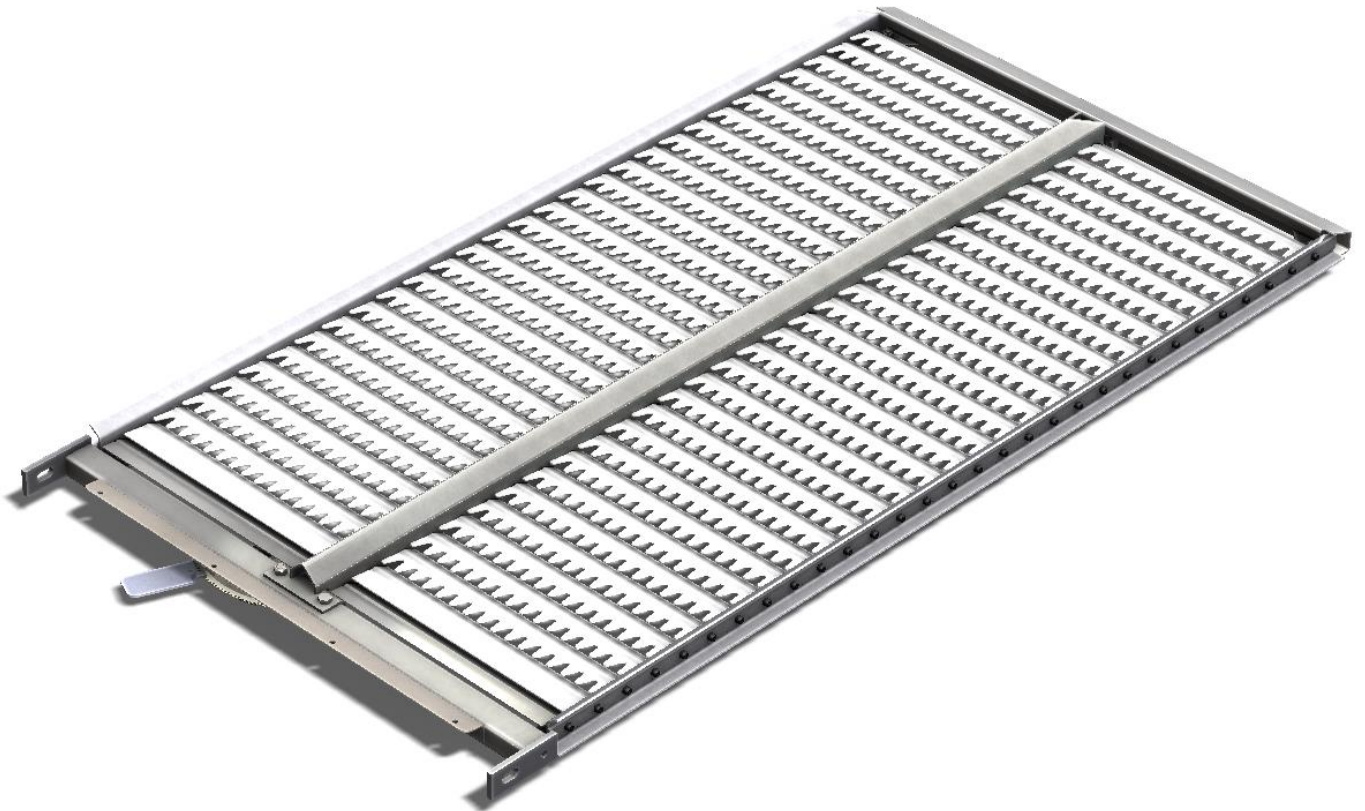


Gateway

SIEVE & CHAFFER SYSTEM

Installation Guide

CaseIH & New Holland CR, CX Machines



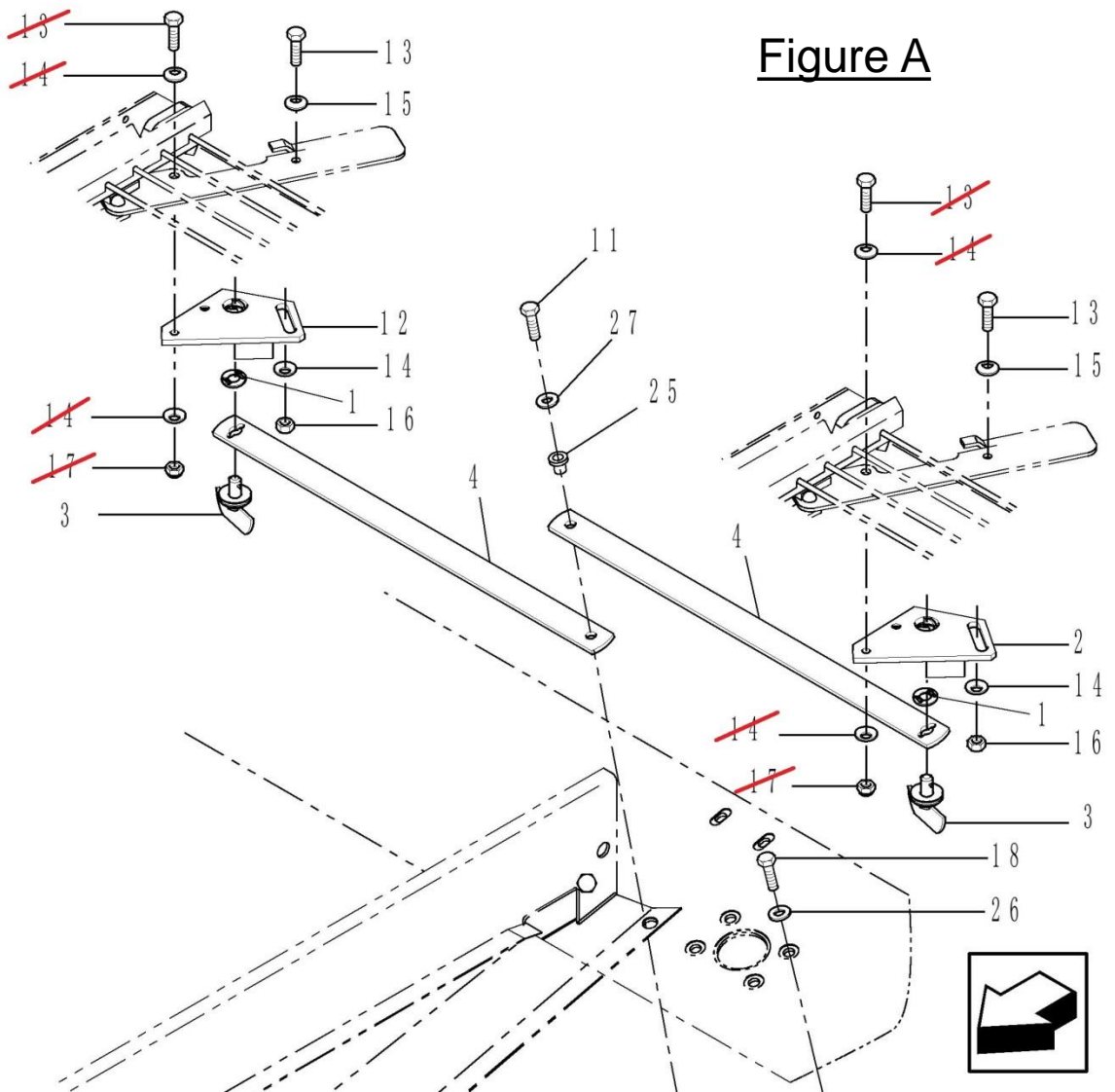


Thank you for your purchase of a Gateway sieve. Some of the features of your new sieve may require some modification to your existing parts and/or may mount in your shoe slightly different than your OEM sieve. This instruction sheet should answer those questions.

Removal of steel OEM frames:

Review any literature in your manual that refers to removal of sieves.

- Arrows refer to direction of travel unless otherwise noted.
- Remove 18mm bolts on side member. Remove 18mm bolts from center section (larger machines).
- Rotate Item #3 (Figure A) clockwise (may require pliers) on both top and bottom sieves. Item #3 should remain attached to Item #4 which will stay connected to the machine during removal of steel frames.
- After removing steel frames several items will need to be removed and attached to your Gateway frame. (see "Parts transfer from Steel to Gateway frame").



Parts transfer from Steel to Gateway frames:

- Item #12 in Figure A will need to be removed (with fasteners) from all top and bottom frames and reattached to the Gateway handles.
- While installing Item #12 to the Gateway handle; note that the loose fasteners provided (shown in Figure B below) will replace Items #13, 14, & 17 where crossed off in Figure A on the previous page.

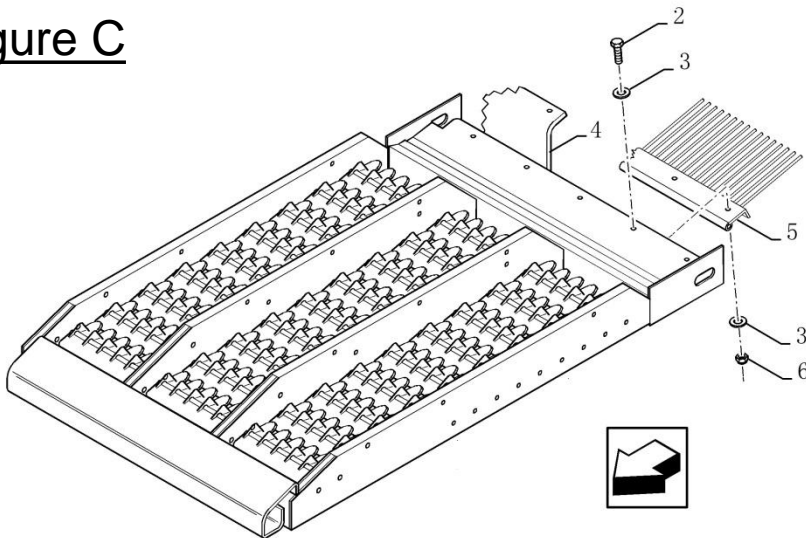


Figure B

Parts transfer from Steel to Gateway frames (continued):

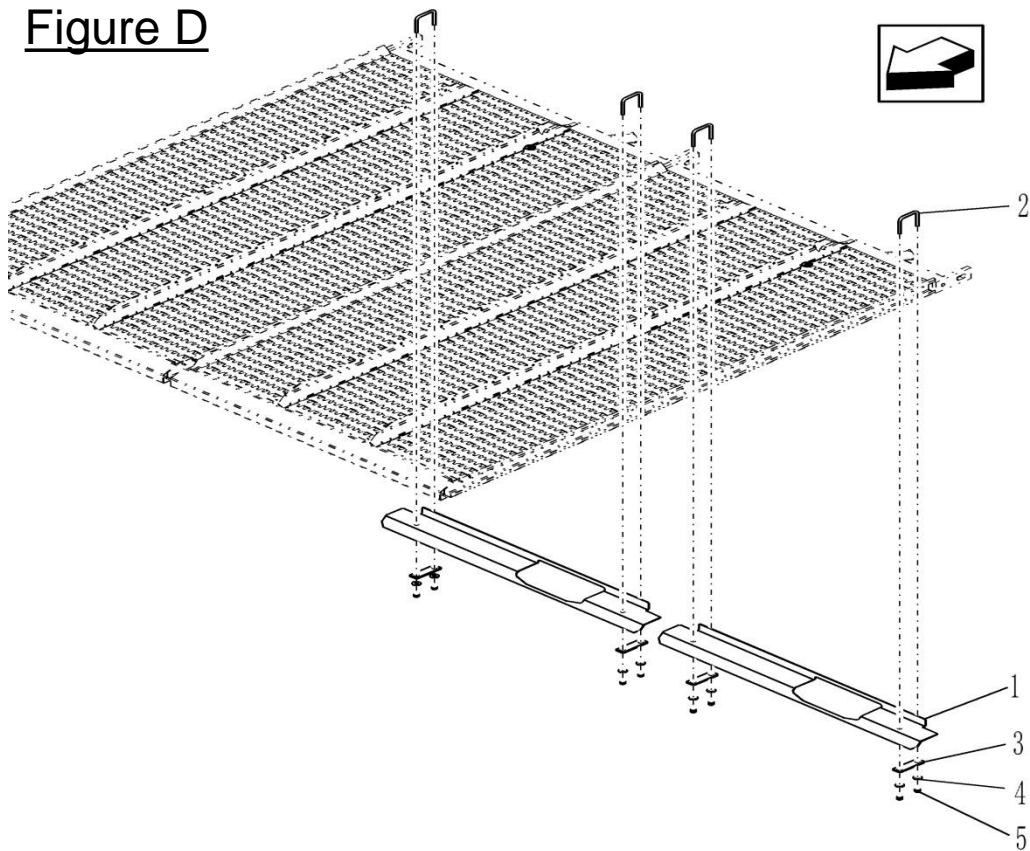
- The top chaffer(s) will require the transfer of Items #2, 3, 4 (seal), 5 (rake), & 6 shown in Figure C. Note how each item is assembled to the steel frame; duplicate that assembly to the Gateway frame.

Figure C



- The bottom sieve(s) will require the transfer of Items #1, 2, 3, 4, & 5 shown in Figure D. Discard Item #1 and replace with provided Gateway plates of similar design. (Item #1 Gateway plates may be loose or assembled to Gateway upon removal from box).

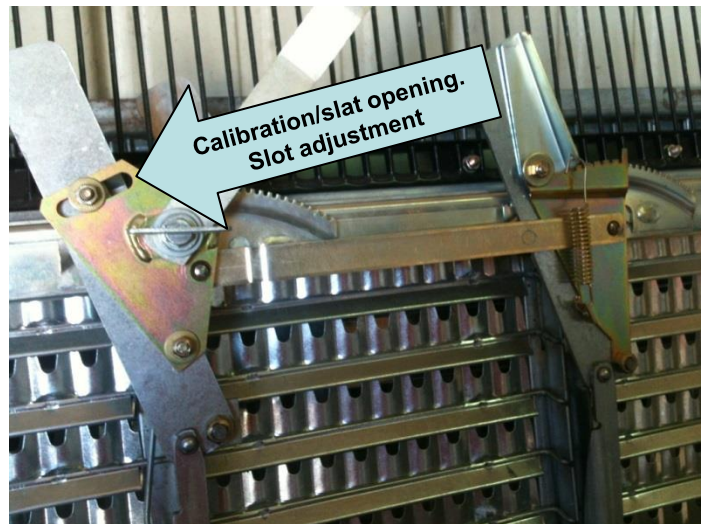
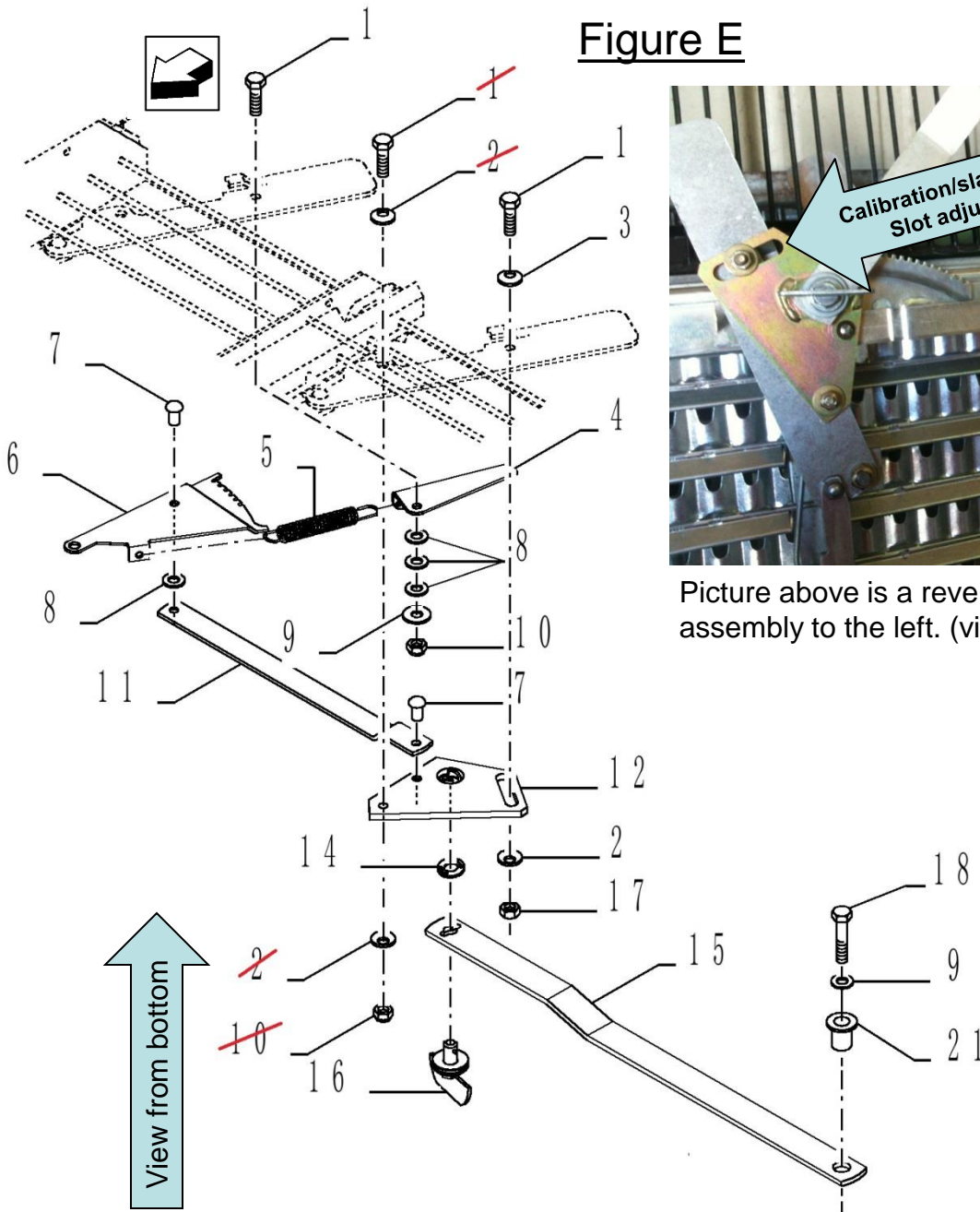
Figure D



Parts transfer from Steel to Gateway frames (continued):

Top chaffer with two adjustments

- The top chaffer with dual adjustment will require the transfer of individual parts and parts riveted together on your steel frame.
- Items 6, 11, 12 & 15 can be removed as an assembly (Including item #16) and reattached to your Gateway handles. Note that the loose fasteners provided (shown in Figure B) will replace Items #1, 2, & 10 where crossed off in Figure E.
- Items #4, 5, 8, 9, 10 should also be removed and transferred to the Gateway handles.



Picture above is a reverse view of exploded assembly to the left. (view from bottom)

Final notes / summary:

- Slight rotation of adjustment lever in the combine, either by cab or up/down arrow buttons at rear of combine may be required to make connections with sieve adjustments.
- Adjustment slot can be adjusted to aid in maximum opening of sieve slats and calibration of Gateway sieves. See Figure E arrow referring to slot adjustment.
- Refer to sieve calibration in operators manual.



IF YOU HAVE OTHER QUESTIONS: Please contact your dealer or distributor.

You may also email or visit our website at:

e-mail: info@hccinc.com

web: www.hccinc.com