

WEAVERLINE



Operator's Manual

Series 5 Feed Cart

Models 521, 525, 531 & 537



CAUTION: Drive at a speed slow enough to ensure safety and complete control at all times.



CAUTION: Know the controls and how to stop quickly. READ THIS OPERATOR'S MANUAL BEFORE OPERATING THE CART

Weaverline, LLC - Churchtown, PA 17555

INTRODUCTION

THANK YOU...

For choosing a Weaverline Series 5 Feed Cart. A product manufactured in the U.S.A by Weaverline, LLC of Churchtown, Pennsylvania, founded in 1965. When used and maintained properly your investment will provide years of dependable performance.

PURPOSE

The purpose of this manual is to assist the operator in maintaining and safely operating this machine. It must be carefully read and understood before operating or attempting any adjustments.

The photos and illustrations throughout this manual were current at the time of printing, but due to continuous improvement, your machine may vary slightly. Weaverline, LLC reserves the right to improve, change or modify its equipment, parts or options thereof without any obligation of notification or updating previous machines.

SAFETY

Equipment of this nature can cause severe injury or death if operated incorrectly. Safety should be of primary concern when working around this machine. Common sense and safety go hand in hand – USE IT!



THIS SYMBOL IS USED TO CALL OUT A WARNING OR DANGER.

DEATH, PERSONAL INJURY, OR PROPERTY DAMAGE MAY OCCUR UNLESS INSTRUCTIONS ARE FOLLOWED CAREFULLY.



WARNING:

If after reading this manual you fail to understand any part of this manual, how to operate this piece of equipment, or do not understand any other information included with this manual call Weaverline, LLC before proceeding.

Call between the hours of 7:00 am and 5:00 pm EST at one of the following numbers:

Phone: 877-464-1025
717-445-6724

SERIAL NUMBER

The serial number is located on the right side of the undercarriage next to the battery drawer. (see Figure 1.) This is an aluminum tag with a green background. **REMOVAL OF OR TAMPERING WITH THIS TAG CAN VOID WARRANTY!**

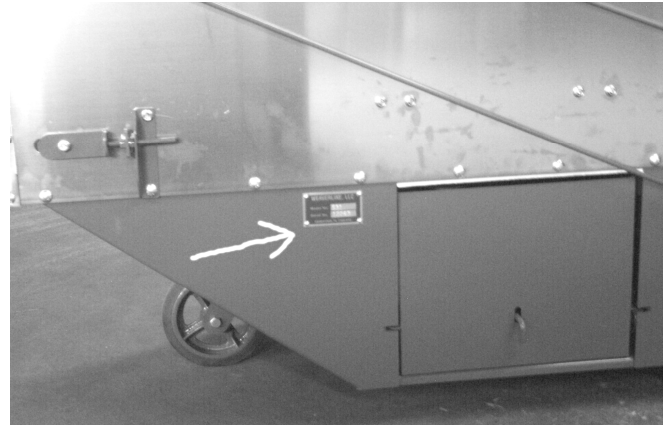


Figure 1 Serial Number Tag Location

WEAVERLINE, LLC	
Model No.	<input type="text"/>
Serial No.	<input type="text"/>
CHURCHTOWN, PA 17555-9705	

Always refer to these numbers when ordering options, parts, service or information. Enter this information below for speedy reference.

MODEL NUMBER _____

SERIAL NUMBER _____

TABLE OF CONTENTS

SAFETY	3
OPERATION and CONTROLS	3-4
SERVICE	4-5
TROUBLE SHOOTING.....	5-6

SAFETY



WARNING:

This machine is to be operated only by adults. Read and understand this operator's manual completely before attempting to operate, service or make adjustments. Prior to use, locate all warning decals and be aware of the safety hazards they call out.



WARNING:

Never wear loose clothing while operating this equipment, it can become caught in moving parts.



WARNING:

Batteries emit Hydrogen Gas, which can explode. Batteries contain Sulfuric Acid, which is poisonous and corrosive. Battery terminal contact with the frame or bare wire can cause sparks. Spark or explosion from batteries may cause severe personal injury or death.

PRE-OPERATION SAFETY CHECK

- AGAIN, be sure to read this manual completely before operating or servicing this piece of equipment!
- Always remove key when servicing or when not in use.
- Operate cart at a safe speed.
- Shut off motor when loading or when stopping feeding even for a short time.
- Keep all shields in place and carefully follow decal instructions.
- Make sure all electrical connections are secure and in good condition.
- Make sure all controls operate correctly.

- Keep others away. Make sure only the operator is near the machine during operation.
- Always shield eyes and face when working near batteries.

OPERATION



CAUTION:

Read this entire section before operating the cart.



WARNING:

Make certain everyone is clear of the cart.



Figure 2 Control Location

Turning the key switch (A) on will start the motor.

REMEMBER! IF YOU HAVE ANY PROBLEM, TURN KEY OFF AND REMOVE KEY BEFORE CORRECTING PROBLEM.

With the key switch (A) on, moving the lever (B) labeled "Forward and Reverse" will move the cart in the direction indicated. As the lever is advanced, speed of the cart will increase.

ALWAYS LOOK BEHIND YOU BEFORE BACKING.

Before loading feed into the cart, move the right-hand lever (C) to the top of the 8 positions labeled “Load and Start.” Close discharge door with handle (D) and cart may be loaded with feed.

To begin feeding, open the discharge door with handle (D) and raise lever (E) “Feeder Clutch”. Only the 2 lower augers will begin feeding. After initial load has been removed from the lower augers, move right-hand lever (C) to the second notch “Beaters”. This will engage 4 augers. After the augers are cleared of material, move right-hand lever (C) to the feed rate #1 and increase as desired to #2 or #3 in heavy material, or up to #6 in light feeds and to empty the cart completely. If augers stall, use a lower feed rate.

After each feeding, observe the voltmeter (F) while the key is turned on with only the motor running. In normal use, recharge only if the needle is in red “Recharge” area. See “Charging Instruction” decal (H) on cart. With good batteries, cart should operate for up to 30 or more cart loads per charge.

Note: When new batteries are used for the first time, they may only have power for 20 loads. With the second charge, they may be good for 25 loads, and on the third charge they should be good for 30 or more loads.

For long battery life, it is **important** to get as many loads as possible per charge.

When charging is needed, connect charger plug into receptacle (G) on cart. Connect the AC cord on the charger into a properly grounded 115V receptacle. The charger will automatically turn on. The ammeter on the charger will show the rate of charge. When batteries are full, the microprocessor circuit in the charger automatically shuts off the charger. Always disconnect the charger AC plug from the receptacle before removing the DC plug from the cart. After removing the DC plug from the cart, the cart is ready to use.

WARNING:

Charging batteries creates Hydrogen Gas, which can explode. Keep sparks and open flame away from batteries at all times.

If the cart needs to be moved without the motor running, pull out and latch lever (I) “Free-wheeling Lever” to move the cart. CAUTION: With the Freewheeling lever latched in the free-wheel position, cart will roll freely. Only pull freewheeling lever out when cart is on a level surface.

SERVICE _____

WARNING:

Turn off and remove key and be sure that all moving parts have come to rest before performing any service work.

WARNING:

BEFORE OPENING BATTERY DRAWER

Turn key switch off and remove key.

Shield eyes and face when servicing batteries.

Do not smoke or permit sparks or open flame near batteries.

Be sure all wires are routed properly and will not catch on terminal posts.

Battery terminals must not touch frame, keep debris from under battery.

Keep all insulating protective devices in place.

Failure to follow these warnings may result in personal injury or death.

MONTHLY

Check water level in batteries by rolling out battery tray first to the right and then to the left. Add clean water only if needed.

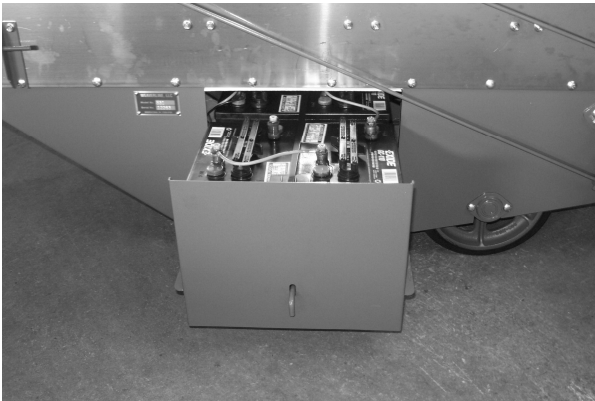


Figure 3 Battery Drawer



WARNING:

Always wear eye and face protection when working near batteries. Read warnings on preceding page.

Carefully inspect cable connections at batteries for corrosion. Remove and clean if needed. Replace if badly corroded. Use a sharp object to scrape the top of the battery post for a bright clean lead surface before attaching cable connections. Also scrape the terminal where it contacts the battery post. Tighten cable connections securely. **Replace worn or damaged cables immediately. Always close battery drawer before turning key switch on.**

Check hydrostatic oil level in clear tube inside main shield. Check when cold. If low, add only to midpoint by removing breather from top of tube. Allow no dirt to enter. Use standard tractor hydraulic oil. Do **NOT** drain or attempt to change oil in the hydrostatic unit.

SEMI-ANNUALLY

Grease fitting on swivel of caster.

Grease fitting on wheel of caster.

Oil hinge and pivot points in controls and linkages

Oil rod end bearing on ratchet drive at top sprocket.

Oil roller wheels for battery drawer.

Oil latch on right-hand handle.

Check slack adjusters on conveyor chain. By applying light pressure on a pry bar inserted between the mounting bracket and the adjusting plate, gap between stop nut and bracket should be 0 to 1/16" as shown in Figure 4.

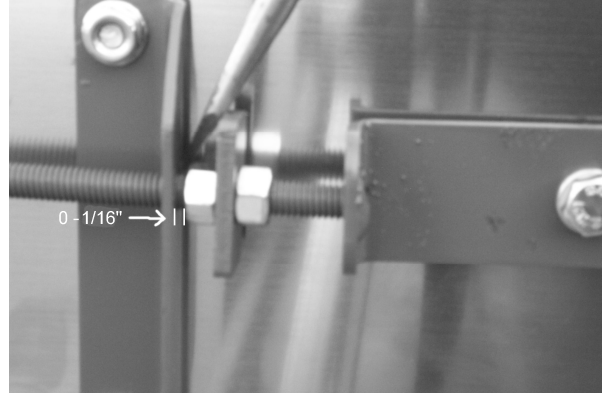


Figure 4 Conveyor Slack Adjustment

TROUBLE SHOOTING _____



WARNING:

Safety first – turn off and remove key!

FEEDER DRIVE

Feeder belt slips and augers jam

1. Adjust feeder clutch adjustment for 2" spring length when engaged. (See Figure 5)
2. Replace belt if badly worn.

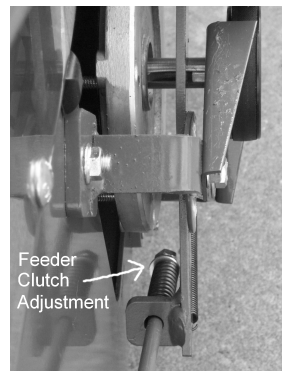


Figure 5 Feeder clutch spring adjustment

Feeder drive will not stop when feeder clutch is disengaged or belt grabs and will not release in neutral.

1. Adjust belt guides. With key switch turned off and feeder clutch engaged, clearance at motor pulley should be 1/16" on straight side of belt and 3/16" on idler side. (See figure 6.)

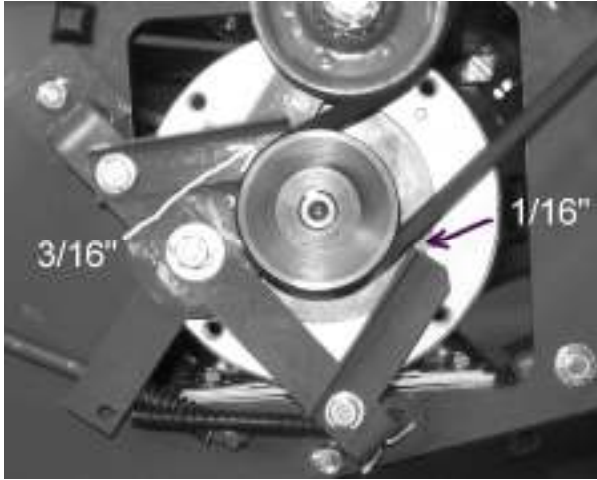


Figure 6 Belt Guide Adjustment

2. Be sure to have proper length belt

SP DRIVE

Cart wants to "creep" in neutral

Adjust clevis at end of cable at transmission control arm.

Cart will not drive

1. Be sure free wheel lever is not latched in the free wheel position.
2. Check hydrostatic oil level.
3. Check if chain leaving hydrostatic transmission is turning.
4. Check for missing keys, sprockets out of place or chains off sprockets.

Do not remove hydrostatic transmission unless you are sure in needs to be replaced.

Extra noise and vibration with only the motor running.

Coupler will be noisy unless motor is perfectly aligned with the hydrostatic transmission – vertically with shims and fore and aft by slots.

ELECTRICAL

Charger does not charge

1. Check A-C voltage to charger
2. Check fuse on charger
3. Check for clean cable connections at batteries (See page 4 for cleaning instructions)

Cart motor does not run

1. Check circuit breaker. (See figure 7) **Safety first – Turn off and remove key!** Push battery drawer to left side of cart to gain access to circuit breaker. If circuit breaker is tripped, press lever back in to reset.

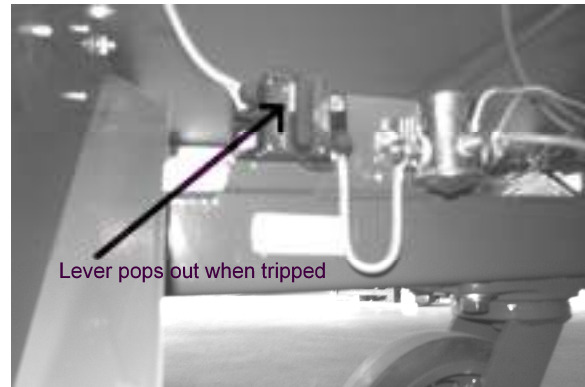


Figure 7 Circuit Breaker

2. Check for clean cable connections at batteries (See page 4 for cleaning instructions)
3. Check key switch and solenoid
4. Check motor – **If motor runs slow or speed is erratic, immediately have motor checked.** Brushes may be worn down and need replacement. If not repaired in time, motor can be ruined. Check with your dealer about motor repair or exchange.