

MARLON®

The Perfect Team of Jons and Utilities

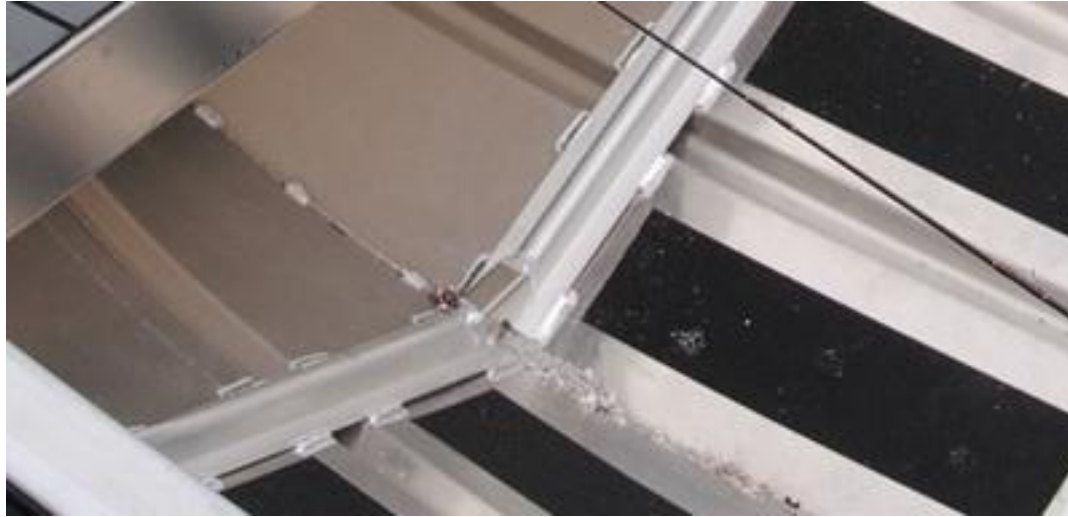


Marlon Boats Utilities & Jon's

- All 2020 boats have a new bold look
- Utilities now have the rear seats turned to run down the side of the hull.
- All boats c/w high density EVA covers on the seats “grey with black stripes”
- New rear bench option and new console option – driven by our Eastern Distributors
- Side Console is in the works. Coming soon.



- Ribs full length and we added one to the bow.



- Improved welds on ribs $\frac{1}{2}$ " longer and on opposite sides
- Weld sequence has changed

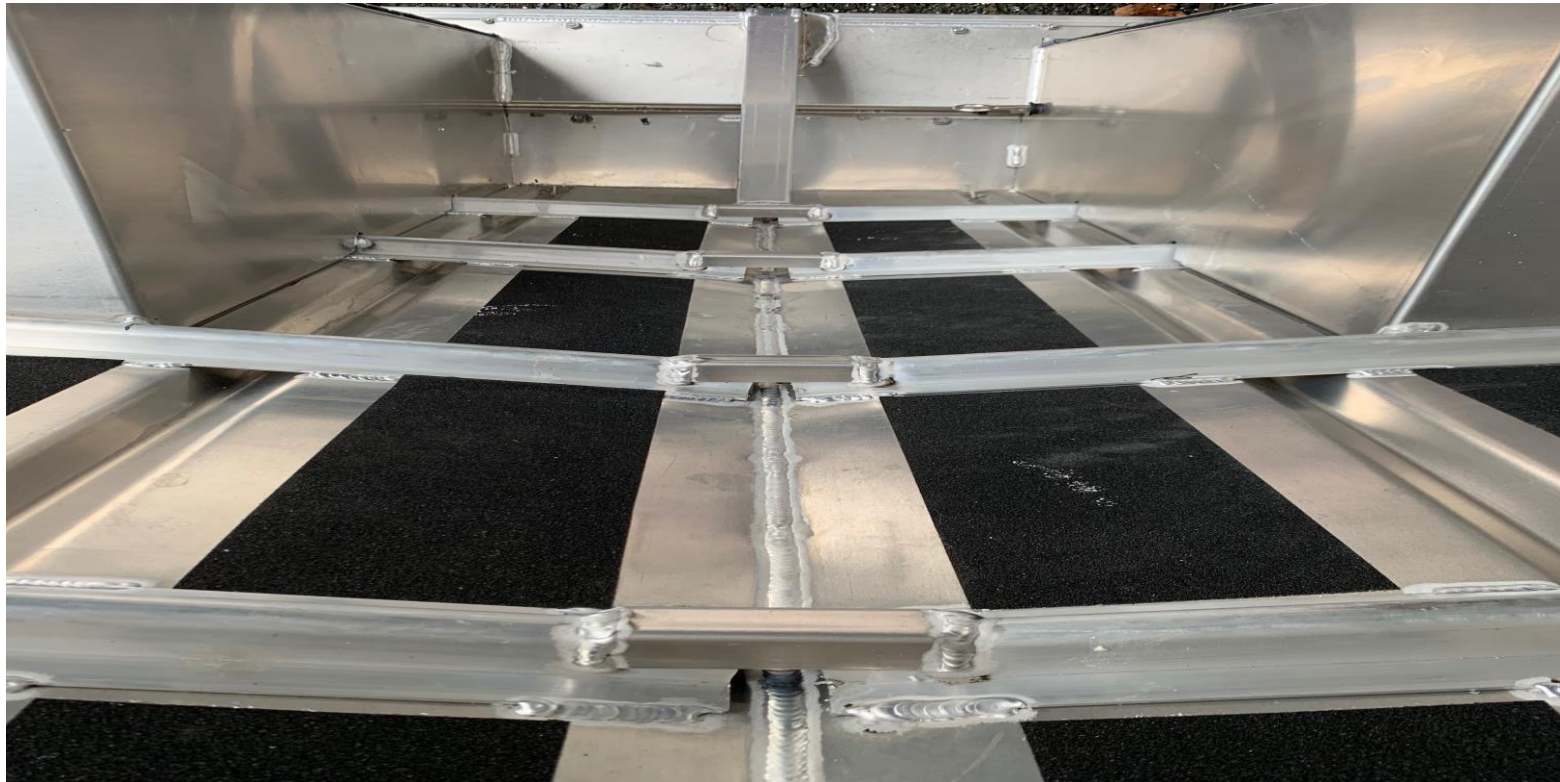


- Riveted bow cap removed – replaced with welded bow

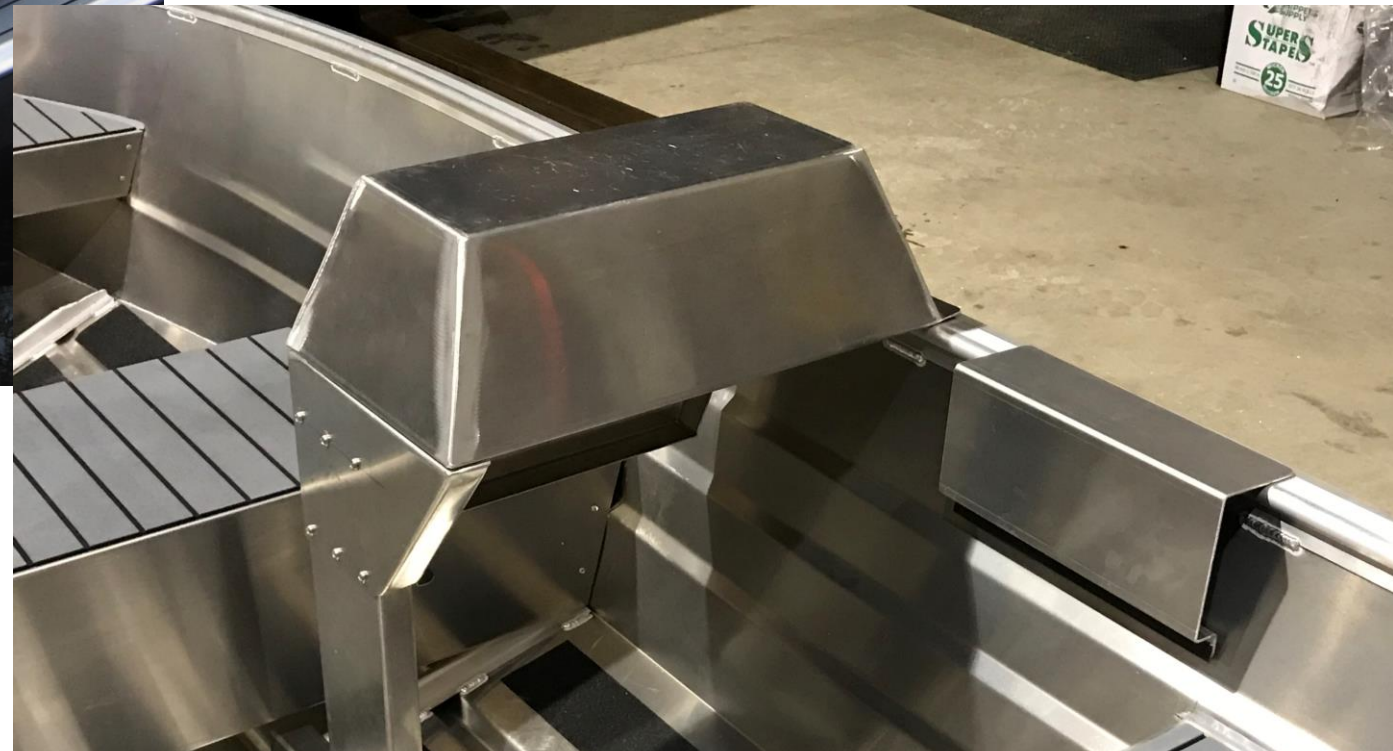
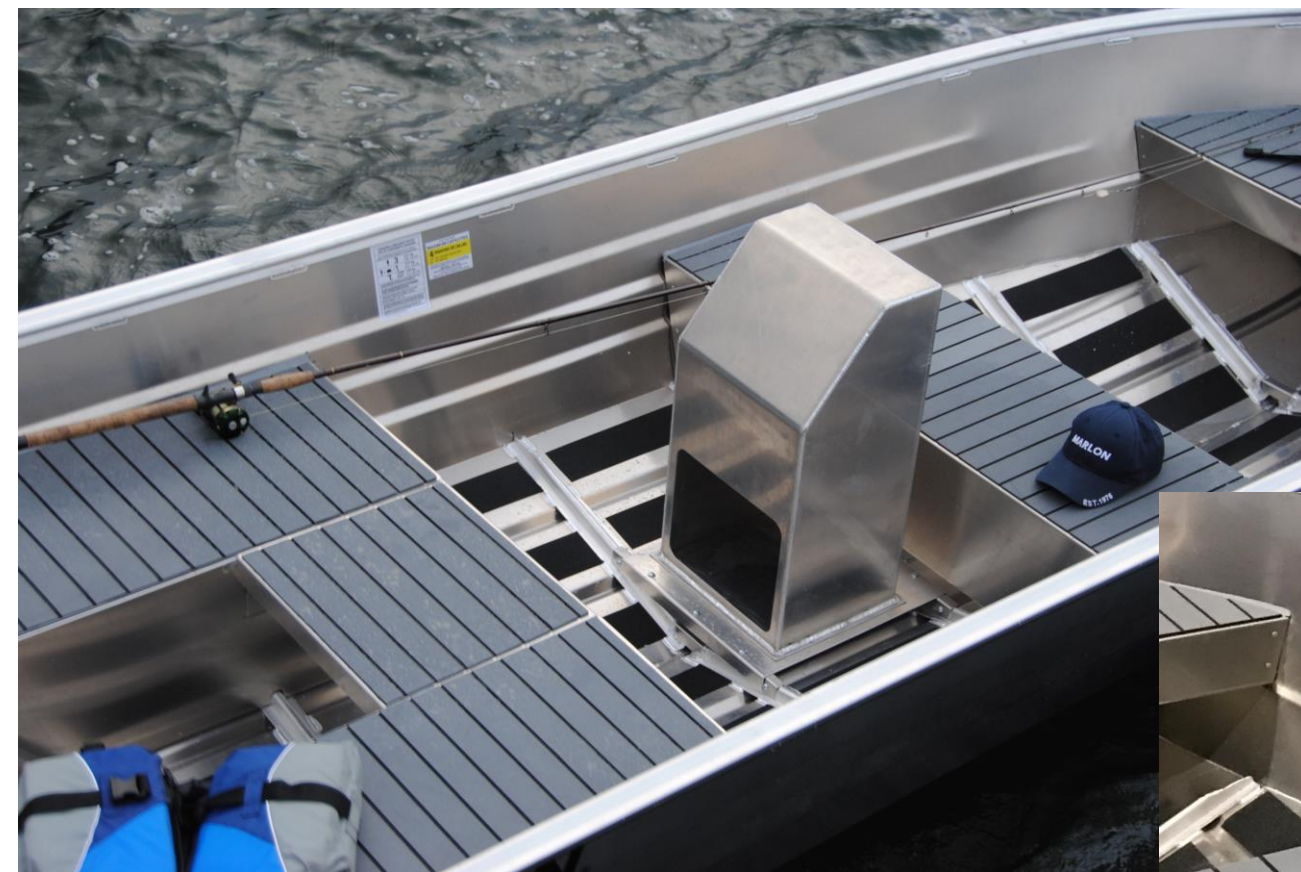


- Drain hole on the back side of the boat gunnel.
- Seats will run to or close to the floor structure on the inside with added flotation and increased boat structure strength.
- Transom welded across the back inside for additional strength needed for the growing use of 4 stroke engines

- Consistent and longer welds along the gunwale.
- New flow through rib openings.



Optional Center Console and Bench Seat 14' & 16'



Focused Features

All Welded Utilities and SP14 Jon Boat
10' and 12' Jons are welded with riveted in seats



Strongest transom in the industry comes with heavy duty transom supports.
Designed and built for the growing number of heavier 4 stroke engines.



Wide chine width with square corners add stability, gets the boats up on step faster with less horse power.

Other brands tend to not provide the chine or bottom widths of their boats as they are narrower with rounded chine corners to save material costs. This results in not being as stable and taking longer to get out of the hole and up on plane.



High Density EVA Seat Pads



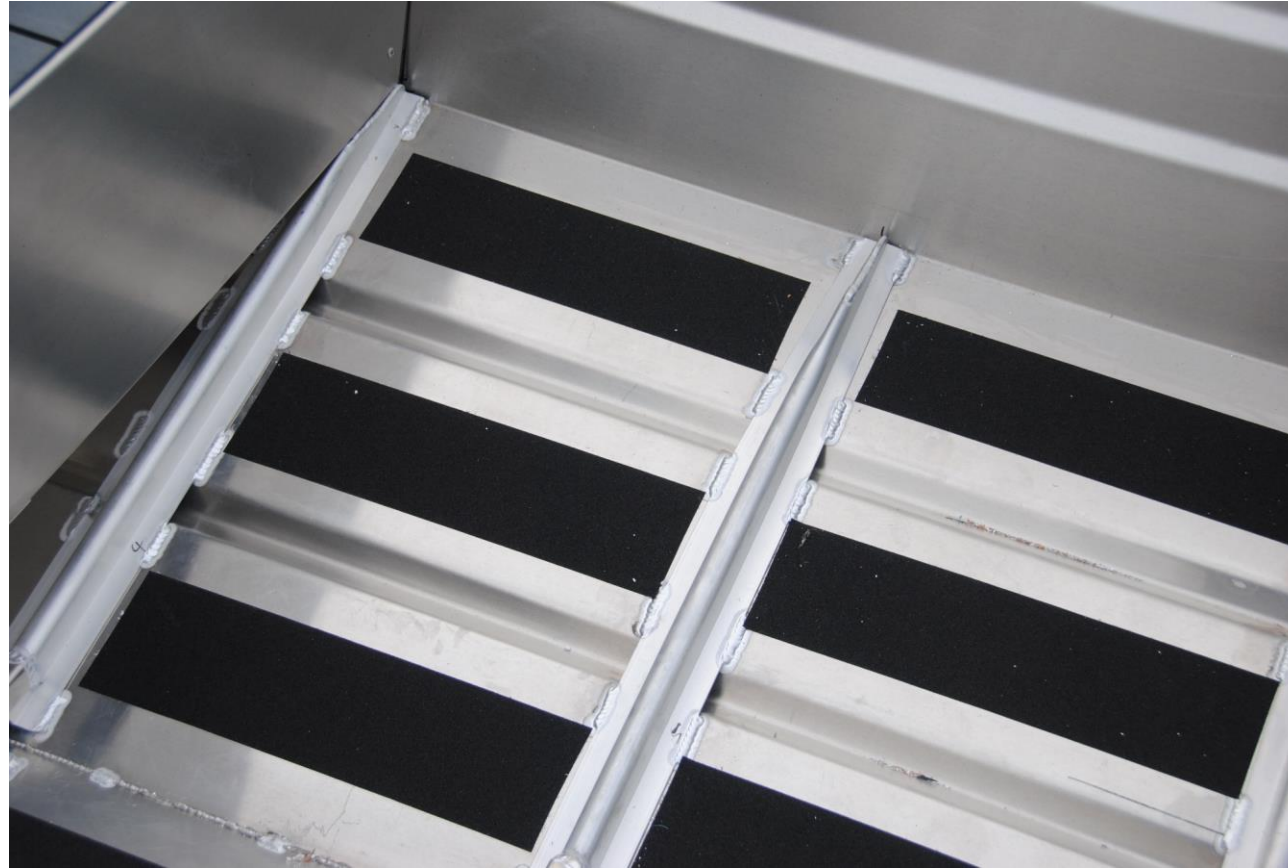
Adds to our new bold look and comfort!

Deep Hulls



Provide stability, safety and frame of mind when out with the kids.

Welded ribs



Very few competitors offer a welded hull & ribs in this size range of boats only in larger river or ocean boats.

We are different!

Welded vs Riveted..... Your call



We lost count on how many holes are placed in the sides and transom of most boats in this size category. There is 148 in the transom alone on this competitive boat shown on the left! Our sides are a one piece continuation of the bottom and our transom is sealed with a weld shown on the right.

Heavy Duty welded on bow eyes on utilities



Check out our competitors bolted in bow eye adding additional holes in your hull. Marlon's are welded with an additional hole for your trailer safety chain!

Carry Handles

4 handles standard on Marlon boats – we make it easy and convenient to get to the water!



Check out the competitors some offer two on the transom others offer none at all! Good way to save cost but inconvenient for years of use.

Large useful bow seat



Great for stepping on from the dock or storing the necessary gear.

Ready to Go SP 10', 12' & 14'



Lots of interior room gives your family more comfort to make memories! SP10' shown in above picture.

Wide Jon's! Our competition is below us!

10' Jon shown, 1 ½ times the width of the competition



Our wide chine bottom & gunwale equals more carrying capacity 434 lbs vs 200 lbs, more stability and on plane faster with less HP
10' first designed to fit between the wheel wells of a full size truck.

Can you say Stable 10' Jon shown



Perfect for the family & Fly Fisherman

10', 12', 14' we have you covered



Fear No Fish or competition

there are reasons why we separated ourselves from the traditional competition and they all came from using the boats or from users like yourself.



We would love to have you on our team if you are not already! Please send us pictures of your Marlon Utility and or Jon we love the ideas you have and we learn from what we see you are doing!



SVW 12 SPEC'S

Specifications

- Length: 12'
- Beam: 59"
- Bow Height: 25"
- Bottom Width: 47"
- Approx Dry Weight: 204 lbs
- Maximum HP: 10 CDA & US
- Transom: 15"
- Hull Gage: 0.0785
- 2 person capacity CDA & US
- Max Gross Load: 639 lbs CDA / 443 lbs US

Features

- All welded hull.
- New rear side seat design has increased flotation and comfort.
- High density foam EVA seat covers.
- Heavy duty transom and transom support like no other!
- Traction grip on floor.
- Gunnel extrusion with rubber insert for looks and protection.
- Welded Heavy duty bow cleat for securing your to your trailer or dock.
- Standard with two carrying handles on the bow and two on the transom for easy carrying.
- Roomy usable bow seat.
- Not only do we have wide beams, but we also have wide chine width which gives more stability, faster and less HP to get on plane.

SVW 14L SPEC'S

Specifications

- Length: 14'
- Beam: 63"
- Bow Height: 27"
- Bottom Width: 52"
- Approx Dry Weight: 229 lbs
- Maximum HP: 20 CDA / 15 US
- Transom Height: 20"
- Hull Gauge 0.118
- 3 Person Capacity CDA & US
- Max Gross Load: 821 lbs CDA / 562 US
- Transom L

Features

- Heavy duty transom and transom support like no other!
- Traction grip on floor.
- Gunnel extrusion with rubber insert for looks and protection
- Welded Heavy duty bow cleat for securing your to your trailer or dock
- Standard with two carrying handles on the bow and transom for easy carrying

SVW 16 SPEC'S

Specifications

- Length: 16"
- Beam: 71"
- Bow Height: 27"
- Bottom Width: 57"
- Approx Dry Weight: 297 lbs
- Maximum HP: 30 CDA & US
- Transom Height: 20"
- Hull Gauge: 0.118
- Person Capacity: 4
- Max Gross Load: 1151 lbs CDA / 1082 lbs us
- Transom L

Features

- Heavy duty transom and transom support like no other!
- Traction grip on floor.
- Gunnel extrusion with rubber insert for looks and protection
- Welded Heavy duty bow cleat for securing your to your trailer or dock
- Standard with two carrying handles on the bow and transom for easy carrying

SP10 SPECIFICATIONS

Specifications

- Length: 9.84'
- Beam: 59"
- Height of Sides: 16.92"
- Bottom Width: 51.18"
- Approx Dry Weight: 105 lbs
- Max HP: 5HP CDA & US
- Transom Height: 15"
- Hull Gauge .048"
- Maximum Person Capacity: 3 CDA & US
- Max Gross Load: 549 lbs CDA / 461 lbs US
- Transom Prop Ready

Features

- Three Bench Seats
- Four Carrying Handles
- Welded Hull Seams
- Drain plug
- High density EVA seat pads
- Black non skid floor

SP 12 Specifications

Specifications

- Length: 12.14'
- Beam: 59"
- Height of Sides: 16.92"
- Bottom Width: 51.18"
- Approx Dry Weight: 132 lbs
- Max HP: 10HP CDA & US
- Transom Height: 15"
- Hull Gauge .048"
- Maximum Person Capacity: 4 CDA & US
- Max Gross Load: 881 lbs CDA / 822 lbs US
- Transom Prop Ready

Features

- Three Bench Seats
- Four Carrying Handles
- Welded Hull Seams
- Drain plug
- High density EVA seat pads
- Black non skid flooring

SP 14 SPEC'S

Specifications

- Length: 14.27'
- Beam: 63"
- Height of Sides: 18"
- Bottom Width: 55"
- Approx Dry Weight: 254 lbs
- Max HP: 20HP CDA / 25HP US
- Transom Height: 15"
- Hull Gauge .0785"
- Maximum Person Capacity: 4 CDA & US
- Max Gross Load: 1322 lbs CDA / 935 lbs US
- Transom Prop Ready

Features

- Three Bench Seats
- Four Carrying Handles
- Welded Hull Seams
- Drain plugs
- High density EVA seat pads
- Black non skid floor