

MacDon[®] *The Harvesting Specialists.*

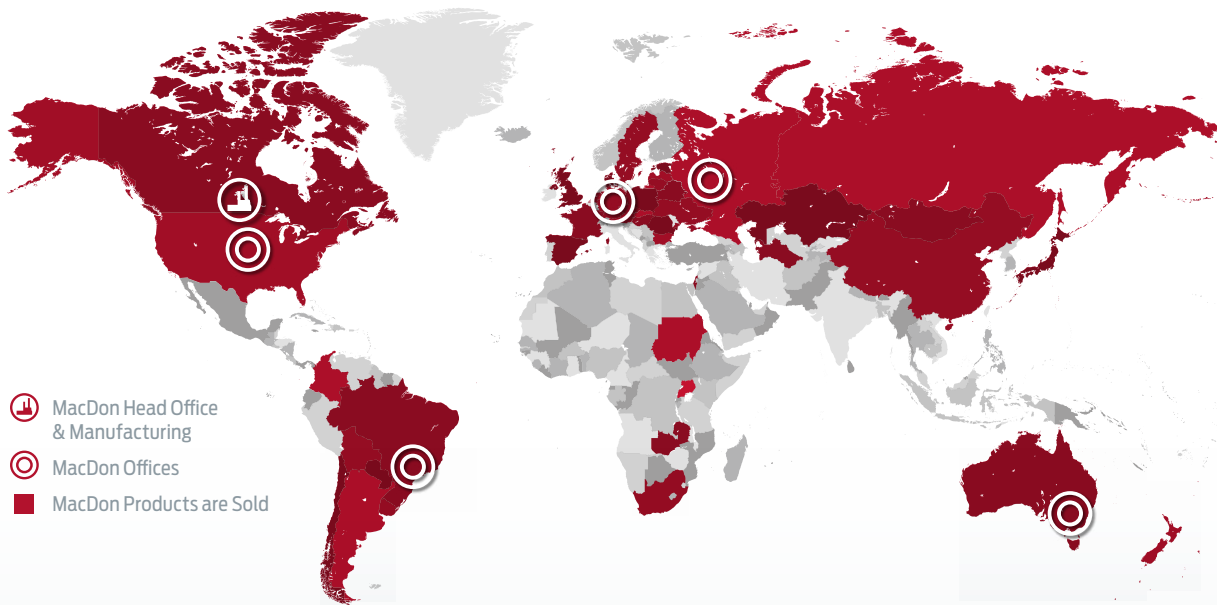


Draper Headers for Combine

Harvesting Performance

For over 70 years MacDon has been a world leader in technology, innovation, and manufacturing of high-performance harvesting equipment. Our harvesting history is rooted deep in the rich prairie heritage of Winnipeg, Manitoba, Canada. MacDon products are distributed and supported worldwide from offices in Canada, the United States, Australia, Russia, Brazil, and Germany.

MacDon's relentless pursuit of improvement is driven by the desire to make harvesting easier and more productive for farmers. Working directly with producers and custom harvesters in the toughest real-world conditions; this relationship guides MacDon to pioneer industry-leading innovations like the FlexDraper®. MacDon has a worldwide reputation for excellence as *The Harvesting Specialists* and we are proud to make equipment that help producers harvest the crops that feed the world.



MacDon® *The Harvesting Specialists.*

MacDon Industries Ltd.

680 Moray Street
Winnipeg, Manitoba, Canada R3J 3S3
t. (204) 885-5590 f. (204) 832-7749

MacDon, Inc.

10708 North Pomona Avenue
Kansas City, Missouri, United States 64153-1924
t. (816) 891-7313 f. (816) 891-7323

MacDon Australia Pty. Ltd.

A.C.N. 079 393 721
P.O. Box 103 Somerton, Victoria, Australia 3062
54 National Boulevard, Campbellfield, Victoria, Australia 3061
t. +61 3 8301 1911 f. +61 3 8301 1912

MacDon Brasil Agribusiness Ltda.

Rua Grã Nicco, 113, sala 404, B. 04
Mossunguê, Curitiba, Paraná
Brasil CEP 81200-200
t. +55-41-2101-1713 f. +55-41-2101-1699

LLC MacDon Russia Ltd.

123317 Moscow, Russia
10 Presnenskaya nab, Block C
Floor 5, Office No. 534, Regus Business Centre
t. +7 495 775 6971 f. +7 495 967 7600

MacDon Europe GmbH

Clayallee 353A,
14169 Berlin,
Germany
t. +49 30 24 534446



Join us on Facebook, Twitter, YouTube, Instagram, and LinkedIn.



CONTENTS

DRAPER HEADERS FOR COMBINE

D1 & FD1 Series Draper Headers (Combine)	4-11
FD1 Series FlexDraper® Headers	12-15
Pick-Up Headers	16-17

SPECIFICATIONS

Product Specifications	18-20
------------------------	-------

PARTS

MacDon Performance Parts	22-23
--------------------------	-------



ANY CROP
ANY CONDITION
ANY COMBINE

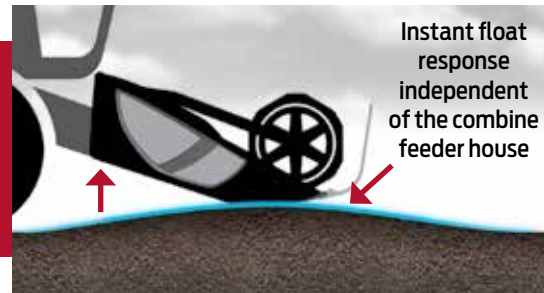
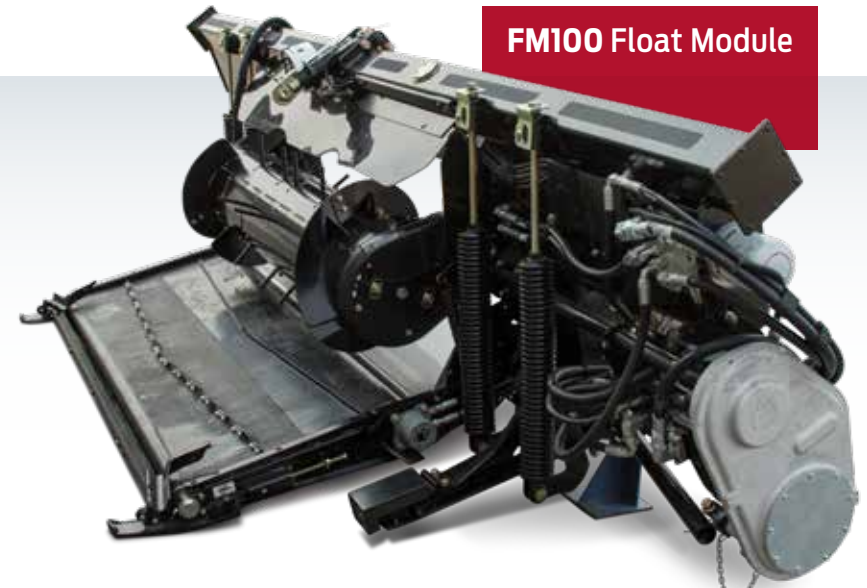
D1 & FD1 Series Draper Header Performance

Next level crop recovery performance

Most combine headers perform well in perfect harvesting conditions, but when was the last time you had perfect conditions? MacDon FlexDraper® and Draper Headers are designed to maximize productivity in the most challenging harvesting situations. From our Active Float System that keeps our headers true-to-the-ground, to the outstanding pickup performance of our reel, to the combine optimization and increased capacity of our FeedMax crop feeding system. It all adds up to getting the most from your field, in any crop, in any condition, on any combine.

A ACTIVE FLOAT SYSTEM

MacDon's Active Float System reacts instantly to changing ground conditions. This immediate float response means you can cut extremely close to the ground without pushing. Two sets of coil springs on the FM100 Float Module support up to 97% of the header weight. The instant float response provides 4.8 degrees of lateral float and 178 mm (7") of vertical float independent of the combine feeder house. Best of all, this is a simple, mechanical system with only one sensor, so things won't break down when your harvest is on the line. MacDon's Active Float System keeps our headers true-to-the-ground for a clean, even cut every time.



LATERAL & VERTICAL FLOAT

HEADER SIZE	LATERAL FLOAT (1)	VERTICAL FLOAT (2)
7.6 m (25')	@ 4.8° = xxx mm (xx")	178 mm (7")
9.1 m (30')	@ 4.8° = 406 mm (16")	178 mm (7")
10.7 m (35')	@ 4.8° = 508 mm (20")	178 mm (7")
12.2 m (40')	@ 4.8° = 546 mm (21.5")	178 mm (7")
13.7 m (45')	@ 4.8° = 610 mm (24")	178 mm (7")



ANY COMBINE

Thanks to the FM100, MacDon Draper Headers are designed to fit all major brand combines with an easy-to-install completion package. This multi-brand compatibility and interchangeability mean your investment will hold its value until it's time to update your header.



B THE MACDON FEEDMAX™

MacDon's FeedMax system is designed to be custom configured to match any combine's performance capabilities, providing serious capacity, optimized feeding, and incredible productivity. FeedMax components are built smart and tough to provide the performance and reliability MacDon is trusted for. Here's how it works:

CAPACITY:

The heart of the FeedMax crop feeding system is the feed auger, featuring combine-tailored speeds, feeding configuration and aggressive action, resulting in up to 20% more capacity over the previous model. In-feed speed is tailored to match that of your specific combine's feeder chain. Bolt-on components make it possible to configure the auger flighting and number of finger tines to match the combine's feeder house opening. The finger tines are longer and more aggressive. Altogether, the FeedMax system works to optimize the performance of any combine in any crop.



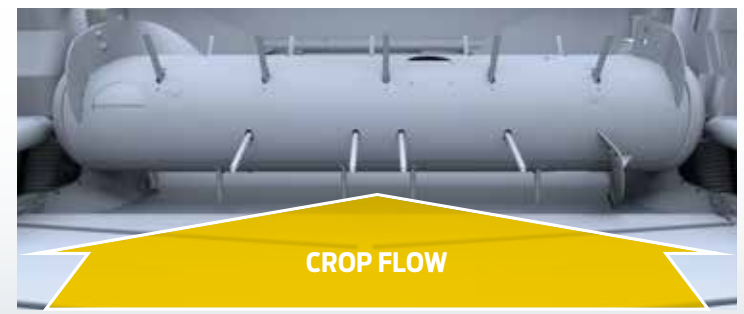
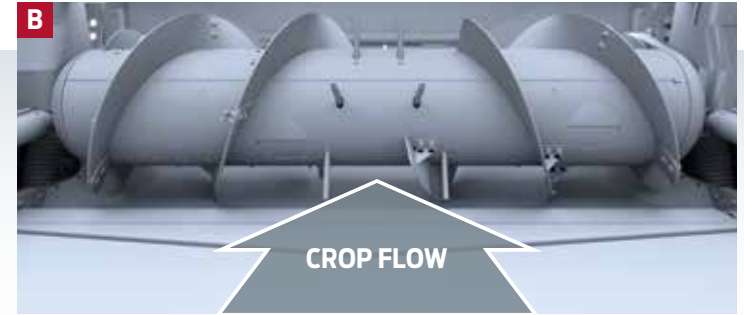
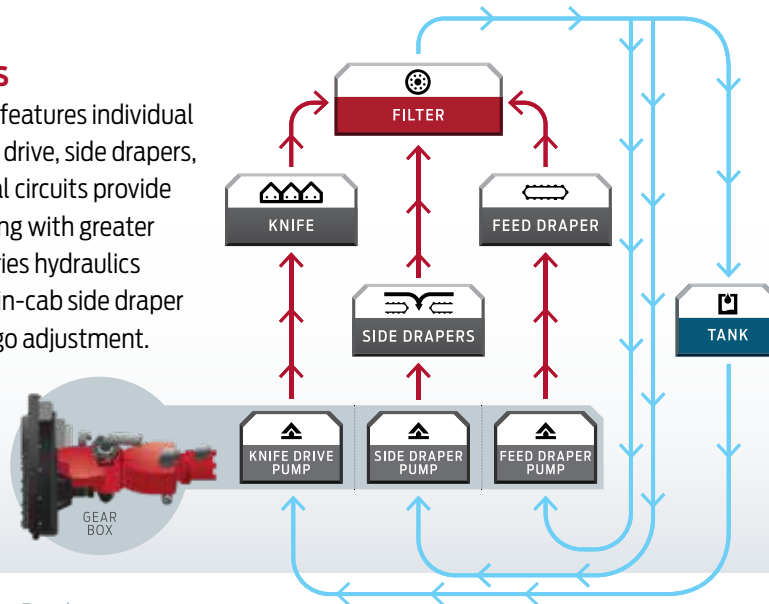
DURABILITY:

The strength and reliability of the FM100's feed auger comes from smart innovations and heavy-duty internal components, like the tine shaft being 25% thicker than the previous model and an all-new reversing clutch that provides positive engagement in either direction. The new finger design protects both the header and the combine from foreign objects. Reconfigured and upgraded, the chain drive tension is externally adjustable and incorporates a positive stop to retain its setting and alignment.

FeedMax™

C HIGH CAPACITY HYDRAULICS

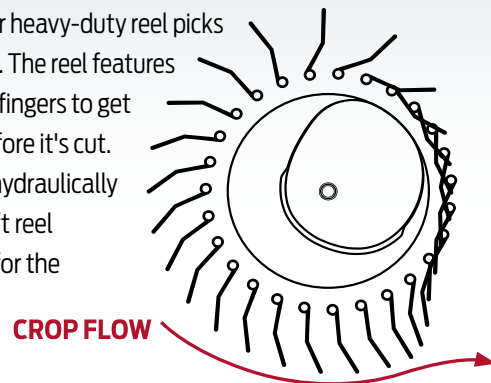
MacDon's new hydraulic system features individual fully filtered circuits for the knife drive, side drapers, and feed draper. These individual circuits provide increased side draper speed, along with greater capacity and reliability. The 1 Series hydraulics make it possible for an optional in-cab side draper speed control, allowing on-the-go adjustment.





D AMAZING REEL PERFORMANCE

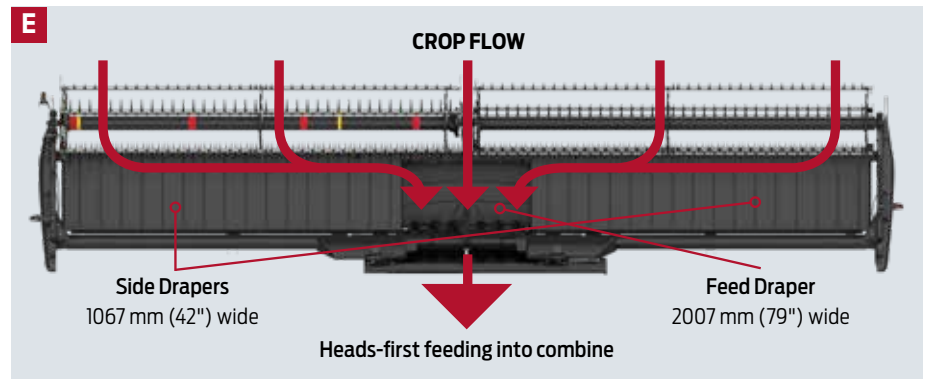
Unlike other headers, the movement of our heavy-duty reel picks up and gently places crop onto the drapers. The reel features a uniquely shaped cam, which allows the fingers to get underneath lodged crop and pick it up before it's cut. Along with the header tilt control, which hydraulically angles the knife from the cab, and fore-aft reel positioning, our headers can be adjusted for the toughest harvesting challenges.



E ACTIVE CROP FLOW

MacDon's Active Crop Flow gently places crop on the side drapers heads-first and swiftly moves it onto the feed draper, where it's scooped up into the combine's feeder house. Heads-first feeding promotes peak combine efficiency by saving fuel, improving threshing action, creating a better straw distribution, and allowing for a more productive harvest overall. Because this harvesting method is more efficient in damp and moist conditions, you can start earlier and work later into the evening.

Part of MacDon's FeedMax system, the side draper speed is increased up to 60% to optimize combine capacity, and an optional in-cab side draper speed control allows on-the-go adjustment.

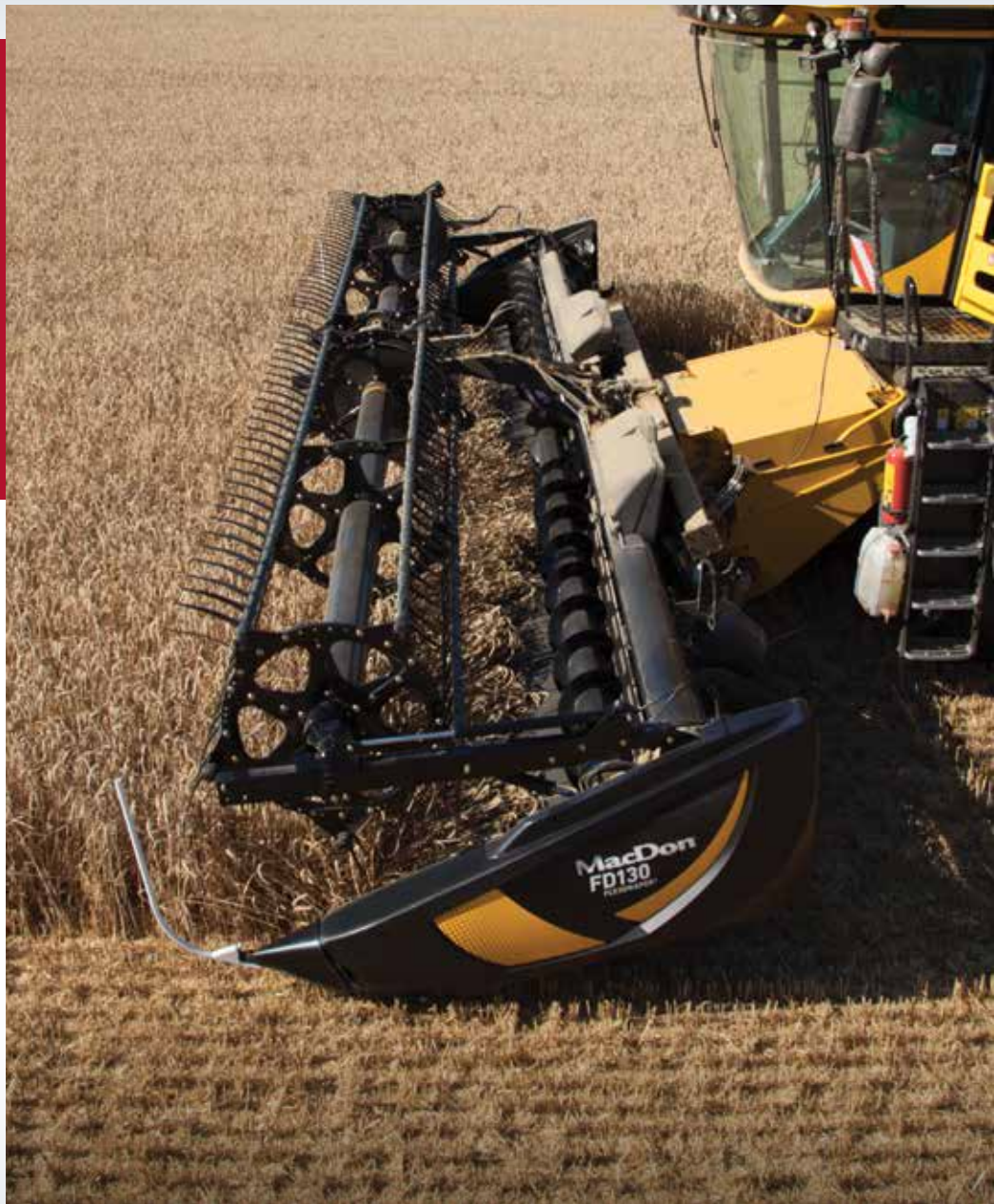


F MULTI-CROP HARVESTING SOLUTION

MacDon's DI and FDI Series headers are true multi-crop harvesting machines able to take down cereals, oilseeds, beans, and just about any crop in any condition. The FDI FlexDraper® switches easily from flex to a solid frame with the quick flip of a lever, giving you the ultimate flexibility to move from one crop type to another. Any crop, any condition, MacDon Drapers are the ultimate performance upgrade for your combine.

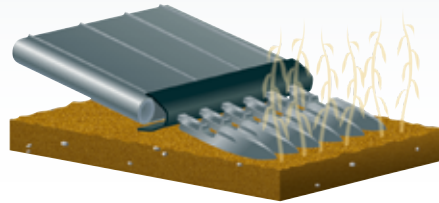


E



G A CONSISTENTLY CLOSE SHAVE

MacDon's C-shaped, low-profile cutterbar design allows ground level cutting for the most consistently close shave of your fields. Featuring a heavy-duty knife drive and in-cab knife angle control, this cutting system allows you to match any harvest conditions. The ultra-smooth ground-facing surface of our cutterbar helps our headers glide along the ground for a smooth close cut every time.



H AGGRESSIVE UPPER CROSS AUGER

The optional Upper Cross Auger helps to move heavy, bushy, high-volume crops, like canola and peas, to the center of the header for smooth feeding. Featuring twin pitch flighting at the center of the auger to aggressively drive crop down and into the feed auger of MacDon's FeedMax system. Available for all header sizes, the upper cross auger is attached in front of the back tube and features a shut-off valve to disengage the drive when not required.



I SELF-CONTAINED TRANSPORT

Our Slow Speed Transport package allows you to tow your D1 and FD1 Series Headers up to 32 km/h (20 mph)*. This option also adds the advantage of spring-loaded stabilizer wheels.



**Always follow local traffic laws and regulations.*



FDI Series FlexDraper® Headers



ANY CROP
ANY CONDITION
ANY COMBINE



Imitated but never duplicated

Featuring MacDon Flex-Float Technology®, FDI Series FlexDraper® continue to advance harvesting innovation. The flex advantage comes from a fixed reel-to-cutterbar relationship, which maintains a small gap between the reel fingers and cutterbar, while the Active Float System allows for instant lateral and vertical float response over rolling and uneven terrain. The result of our Flex-Float Technology is smooth, consistent, heads-first feeding that significantly boosts combine productivity.

FFT FLEX-FLOAT TECHNOLOGY®

A CLOSE REEL-TO-CUTTERBAR RELATIONSHIP

The MacDon FDI FlexDraper® features a fixed reel-to-cutterbar relationship. A small gap between the reel fingers and the cutterbar is maintained at all times, even at extreme flex, ensuring smooth, consistent, heads-first feeding of the crop over the entire width of the FlexDraper.



B ACTIVE FLOAT SYSTEM

MacDon's Active Float System reacts instantly to changing ground conditions. This immediate float response means you can cut extremely close to the ground without pushing soil. Two sets of coil springs on the FM100 Float Module support up to 97% of the header weight. The instant float response provides 4.8 degrees of lateral float and 178 mm (7") of vertical float, independent of the combine feeder house. Best of all, this is a simple reliable mechanical system requiring only one sensor, so things won't break down when your harvest is on the line. MacDon's Active Float System keeps our headers true-to-the-ground for a clean, even cut every time.



C REEL PERFORMANCE

Unlike other headers, the movement of our heavy-duty reel picks up and gently places crop onto the drapers. The FDI reel features 4" finger spacing and a uniquely shaped cam, which allows the fingers to get underneath lodged and low-podding crop to pick it up before it's cut. Along with the header tilt control, which hydraulically angles the knife from the cab and fore-aft reel positioning, our headers can be adjusted for the toughest harvesting challenges.

MacDon FDI FlexDraper® now feature tight, 4" reel finger spacing on all header sizes.

4"
(100mm)
REEL FINGER SPACING

D TRUE GROUND FOLLOWING

The MacDon FDI FlexDraper is a floating, three-section flexible header with a split reel. This allows the entire header frame, cutterbar, and reel to follow ground contours as a unit, flexing up to 254 mm (10") on either end, while maintaining a close reel-to-cutterbar relationship. This unique three-section design lets the FDI FlexDraper deliver smooth, consistent, head-first feeding to the combine, even at extreme flex.





Take FlexDraper® Performance Over the Top!

The ContourBuddy™ Performance Option is a simple mechanical system that uses strategically placed wheels under the FlexDraper. This design takes full advantage of the FlexDraper's Flex/Float system mirroring the contours of the field while cutting up to 250 mm (10") from the ground surface. Using ContourBuddy sets you up for next year's seeding with a consistent even stubble height.

CONSISTENT STUBBLE HEIGHT ON ROLLING TERRAIN

ContourBuddy provides FlexDraper owners the technology to use the Flex/Float and Auto Header Height systems of the header to cut ground contour mirroring stubble heights between 100mm (4") and 250mm (10") from the ground surface.*

HOW IT WORKS

ContourBuddy uses wheels in four strategically placed locations, one on each end of the header and two sets at the hinge points of the header's flex. These wheels allow the FlexDraper's Flex/Float technology to work while cutting up to 250 mm (10") from the surface while mirroring the ground contours.

ContourBuddy™

**True range varies slightly depending on combine type.*



   ANY CROP
ANY CONDITION
ANY COMBINE

PW8 Pick-Up Headers



Set it and forget it.

Our engineers worked hard to make the PW8 as user-friendly as possible. From easy installation to time saving innovations, it all adds up to harvesting performance you can count on. MacDon PW8 Pick-Up Headers are the smartest choice on the market.

A SERIOUS PICK-UP CAPACITY IN ANY CROP CONDITION

A strengthened auger tube and robust chain drive allow the PW8 to easily handle high capacity loads. Both draper decks are run independently by hydraulic motors. The drapers are kept on track by MacDon's patented V-guide roller groove tracking system. Together, these systems allow the PW8 to process the heaviest swaths with ease.

ON-THE-GO CONTROL

The PW8 works with the combine's Automatic Header Height and Lateral Tilt System.

B SIMPLE ADJUSTMENTS

A simple draper tensioning system, easy-to-see draper tension indicators, and common all-metric hardware allow adjustments to be made in a flash.

DROP-AND-GO FLOAT PERFORMANCE

Our simple and effective spring-over-shock floatation system provides a ground following 45.7 cm (18") of wheel float, and requires no adjustment during operation or lockout during transport. Float indicator numbers are clearly visible on both sides of the machine, letting you know the PW8 is operating at an optimum float position.

BRAND COMPATIBILITY

Switch combine brands with MacDon PW8 completion packages. These packages make it easy to switch between combine brands, which increases the resale value down the road.

C GREAT SEED RETENTION

Tight draper connectors and seals, along with a deep overlap of front and rear draper decks ensure that more seed is making its way into the combine for better yields.

EASY MAINTENANCE

Five 100-hour grease points make for quick and easy maintenance of this machine.



SPECIFICATIONS

D1 DRAPER HEADER SPECIFICATIONS

Size*	7.6 m (25')	9.1 m (30')	10.6 m (35')	12.2 m (40')	13.7 m (45')
Weight** Single Knife Drive with FM100	2830 kg (6240 lb)	3270 kg (7210 lb)	3490 kg (7695 lb)	-	-
Weight** Double Knife Drive with FM100	-	-	-	3706 kg (8170 lb)	3837 kg (8460 lbs)
Knife: Type / Drive / Speed	Single or double knife (depending on size and application) / Hydraulic, MacDon design enclosed oil bath wobble box(es) / Single knife combine 1050 to 1400 spm, double knife combine 1100 to 1700 spm (speed varies depending on header size, faster knife speed on smaller headers or double knife headers)				
Guard Types Available	Pointed DHT (double heat-treated), stub SM (sheet metal hold-down, forged bottom guard), stub F (forged top and bottom)				
Reel: Type / Drive / Speed / Fingers	Pick-up reel, five or six bats, two-piece (double) or single, flip-over design, cam-leading finger control / Hydraulic / Combine 0 to 67 rpm (varies depending on combine model) / HD plastic, 152 mm (6") spacing, 279 mm (11") length				
Conveyor: Type / Drive / Speed / Delivery	1057 mm (41.6") wide 680.4 g (24 oz) rubber skim-coated drapers, reversible double V-guide with tracking, integral seal on leading edge / Combine 0 to 194 m/min (0 to 636 ft/min) / Mechanical deck shift, opening width ranging from 1539 mm (60.6") to 1948 mm (76.7")				
Field-Installed Options	Upper cross auger, stabilizer wheels, in-cab side draper speed control, slow speed transport, lateral tilt automatic header height control				

*Product size availability varies by market. **All listed weights are approximations and will vary depending on header configuration. Check with your dealer for combine ratings. Weight includes FM100 Float Module. The FM100 Float Module weighs approximately 1089 kg (2400 lb); this number varies by combine model.

FDI FLEXDRAPER® SPECIFICATIONS

Size	7.6 m (25')	9.1 m (30')	10.6 m (35')	12.2 m (40')	13.7 m (45')
Weight* Single Knife Drive with FM100	3067 kg (6760 lb)	3384 kg (7460 lb)	3520 kg (7760 lb)	3733 kg (8230 lb)	-
Weight* Double Knife Drive with FM100	-	-	-	3797 kg (8370 lb)	3992 kg (8800 lb)
Knife: Type / Drive / Speed / Guards	Single or double knife / Hydraulic, MacDon design enclosed oil bath wobble box(es) / 1050 to 1400 spm, varies depending on header size / Pointed DHT (double heat-treated), strong, mud-resistant profile				
Reel: Type / Drive / Speed / Fingers	Pick-up reel, 2-piece (double) (FDI25 1-piece), flip-over design, cam-leading finger control / Hydraulic / 0 to 67 rpm, varies depending on combine model / 279 mm (11") length, wear-resistant HD plastic, 102 mm (4") spacing (FDI25, 152 mm (6") spacing)				
Conveyor: Type / Drive / Speed	1057 mm (41.6") width, reversible 680.4 g (24 oz) rubber skim-coated drapers, double V-guide with tracking, integral seal on leading edge / Hydraulic / 0 to 194 m/min (0 to 636 ft/min) depending on combine model				
Standard Features	Adapters for most current model combines, hydraulic fore-aft reel positioner, hydraulic header tilt, cutterbar poly wear plates, auto-header height with header angle and ground pressure indicators				
Field-Installed Options	Upper cross auger, stabilizer wheels, in-cab side draper speed control, slow speed transport, lateral tilt automatic header height control				

*All listed weights are approximations and will vary depending on header configuration. Check with your dealer for combine ratings. Weight includes FM100 Float Module. The FM100 Float Module weighs approximately 1089 kg (2400 lb); this number varies by combine model.

FM100 FLOAT MODULE SPECIFICATIONS

	Center Draper	Feed Auger
Size	2000 mm (78.7") width	1660 mm (65.3") width
Weight	Approximately 1089 kg (2400 lb), varies by combine model	
Type	Self-tracking, rubber-coated polyester fabric feed draper with rubber slats, hydraulic drive (reversible)	Floating auger, mechanical drive (reversible), removable retracting fingers with full-retraction when reversing
Speed	107-122 m/min (350 to 400 ft/min)	185-206 rpm, varies with combine model
Header Flotation: Type / Vertical Range / Lateral Range (Tilt)	Two pairs of coil springs, independent adjustment, transport lock-out / 178 mm (7") / 4.8 degrees	

Fits most current model combines.



   ANY CROP
ANY CONDITION
ANY COMBINE



PW8 PICK-UP HEADER SPECIFICATIONS	
Weight	1452 kg (3200 lbs)
Overall Width	566 cm (18' 6")
Effective Picking Width	452 cm (14' 8") between divider lugs
Overall Depth	(96.9")246 cm
Auger Diameter	61 cm (24")
Auger Fingers	Factory set for 18, qty to match specific combine feeder house
Auger Speed	0-200 rpm (Depending on combine model)
Auger Drive Chain	Endless # 80 chain
Drive Shaft	Heavy duty, 1.375" diameter, fully shielded with built-in clutch
Draper Belts	Each deck consists of (4) 1125 mm (44.3") wide drapers joined and equipped with patented tracking V-guide on right end
Draper Speed	0 – 163m/min (535ft/min), depending on combine model
Draper Fingers	5" Plastic
Draper Rollers	Large 127 mm (5") drive and 102 mm (4") idler roller (same on both decks) with V-Groove on the right-hand side to ensure proper draper tracking and reduced slippage
Draper Drive	Two, 5.9 CID (97 cc) hydraulic motors
Gauge Wheels	18.5/8.50-8, adjustable height
Header Float	Spring-Over-Shock System requires no adjustment or lock-out for transport and provides 18 inches of wheel float



   ANY CROP
ANY CONDITION
ANY COMBINE

Keep your MacDon at peak performance with MacDon Performance Parts.

New Parts Showcase:

All new MacDon Performance Parts are designed to meet MacDon's demanding performance standards. They have been tested in the toughest real-world conditions, ensuring the worry-free harvest you've come to rely on with MacDon. They offer the added benefit of convenience and are engineered to be of the highest quality. Our genuine parts have been created with our customers in mind.

Check out the latest offerings from MacDon Performance Parts...



Be Prepared for Performance!

MacDon Performance Parts Kits are designed for convenience. Choose from a variety of kits packed with common high wear items for your MacDon Drapers and Windrowers. Keep them on hand and ensure a smooth running harvest, every time.

→ **Draper Header Kit**

Order one convenient parts kit containing high wear draper header replacement parts that are required by your MacDon header. Sickle sections, guards, wearplates, fingers and hardware are all included in this user-friendly kit. Draper header kits are available for MacDon FDI/DI/FD75 and DIXL/DIX/D65 machines.



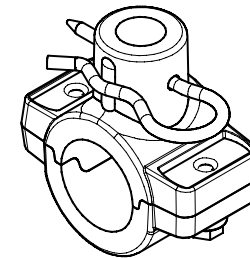
→ **Annual Filter Kit**

MacDon has your filter requirements covered with this convenience kit containing all of the filters you need for your first round of Windrower maintenance. Kits include air, hydraulic, fuel, and oil filters. Have these filters by your side and ready to go when it's time to do maintenance on your Windrower. Available for M105, M155, M155E4, M205, M1170 & M1240 model windrowers.



→ **Split Finger Holders**

Tired of having to completely dis-assemble your combine adapters and drums just to replace fingers? The new Split Finger Holders from MacDon allows farmers to save time and frustration by simply splitting apart their finger holders on their combine adapter/drum. It's as easy as removing hardware and installing new fingers to get you up and running again.



→ **Crop Lifters**

Designed by MacDon, for your MacDon, genuine Crop Lifters lift lodged crop off the ground when crop has been flattened. MacDon crop lifters offer a custom fit specifically designed for MacDon headers, offering optimal performance through all header tilt angles.



Learn more and find your local MacDon Dealer at MacDonPerformanceParts.com

MacDon®



The Harvesting Specialists. MacDon.com

Trademarks of products are the marks of their respective manufacturers and/or distributors. Specifications and options subject to change without notice.
Products subject to availability. Products featured may include available options. **MD-1005C1 2020 Draper Headers for Combine Brochure ENG NA - V-02-07-22**