



TREE SHEARS

TS-16+ MODEL

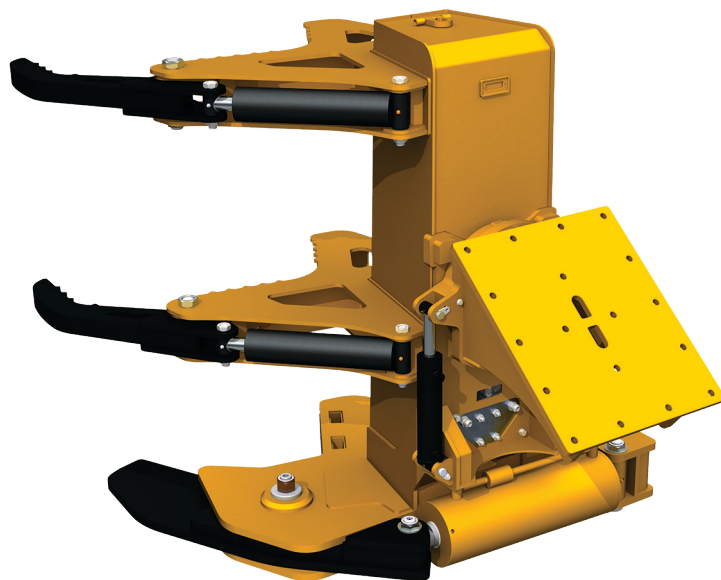


NEW

**BUILT TO
LAST**

www.shoule.com 1 888 404-4380

TS-16+ MODEL



The TS-16+ model hydraulic shear is ideal for cutting trees up to 16" (41 cm) in diameter. Equipped with a 2-arm grapple and built heavy to hold onto the trees, to be able to maneuver in tight spots, and to transport and place in a spot at the final destination wanted. This shear is designed to adapt on excavators.

Length: 66" (167 cm).

Width: 61" (155 cm).

Tree Cutting Power:

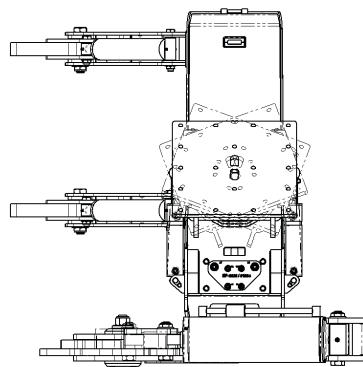
132,500 lbs. @ 3000 psi / 60,100 kg @ 206 bars.

Rotation: -20° to +20°

Blade: RT-400 steel.

Minimum Oil Flow:

30 GPM @ 3000 PSI / 113,5 l/min @ 206 bars.



TS-16+ Model

MODEL	DESCRIPTION	WEIGHT lb / kg	
TS16+	Tree shear 16" (41 cm) Univers. att.	3290 / 1492	



1994

BUILT TO LAST



2016

300 boul. Industriel
Saint-Germain-de-Grantham, QC J0C 1K0
Tel.: 819 395-4380
Fax: 819 395-5516
info@shoule.com

1 888 404-4380
www.shoule.com