

ECO200 MEGA VACUUM



3-STAGE CYCLONIC FILTRATION. Designed specifically for 3,500 free air cfm (5,947 m³/hr) blower systems, it allows for wet and dry vacuum excavation while helping to prolong filter life and minimize maintenance costs.



CAM-OVER REAR DOOR. The highly reliable cam-over design provides a 360-degree positive seal, with no additional clamping and no in-tank moving parts.



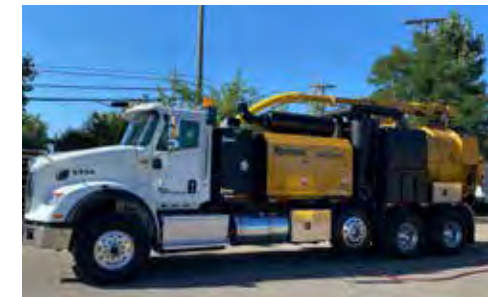
FULL-FUNCTION, WIRELESS CAN BUS CONTROLS. The radio remote monitors and controls all machine functions and vital information. Remote straps to the operator and features a machine stop.



LARGER HOSE DIAMETER. Featuring a 6-in (15.2-cm) hose diameter with a 3,500 free air cfm (5,947 m³/hr) blower and 18 in hg (.6 bar) to get work done and take on big jobs.



VACUUM-NEUTRAL MODE. Air is able to run and circulate through the blower without suction or vacuum in the tank, allowing engine and blower to unload or free run when not in use to help prolong the blower and engine life.



MODULAR DESIGN. Mount on a new or used double-frame truck chassis, on- or off-road crawler carriers or hook truck bodies for access to difficult projects.

ECO200 MEGA VACUUM

GENERAL WEIGHTS AND DIMENSIONS		ECO200
Length		288 in (731.5 cm)
Width		100 in (254 cm)
Height with boom		111 in (280 cm)
Empty weight		18,320 lb (8,310 kg)
ENGINE		
Make and model		Volvo Penta TAD572VE Tier 4 final diesel
Horsepower		215-hp (160-kW)
Fuel tank capacity		Connected
Enclosure		Yes
WATER TANK		
Water tank capacity		600 gal (2,270 L)
Number of tanks		3
Water pump		10 gpm (37.9 L/min) at 3,000 psi (206.8 bar)
High pressure hose length		75 ft (22.9 m)
Low water shutoff		Connected
SPOIL TANK		
Spoil tank capacity		1,600 gal (6,056.7 L)
Door type		Cam-over hydraulic
In-tank washdown		Standard
Mechanical full tank shut off		Standard
Electric full tank shut off		Standard
Tank lift type		Dual cylinder
VACUUM		
Type of filters		2 micron washable filter
Dig tools		3 ft - 5 ft (1 m - 1.5 m)
Dig tool diameter		6 in (15.2 cm)
Vacuum max suction		18 in hg (.6 bar)
Vacuum max flow		3,500 free air cfm (5,947 m ³ /hr)
Vacuum blower type		PD blower
BOOM		
Reach		14 ft - 19 ft (4.2 m - 5.8 m)
Movement		270-degree rotation
Remote control		Wireless
CONTROL PANEL		
Gauges		Electronic display with 7-in (17.8-cm) LCD screen
OPTIONS		
		Dynablast hot water heater

Vermeer MV Solutions, Inc. reserves the right to make changes in engineering, design and specifications; add improvements; or discontinue manufacturing at any time without notice or obligation. Equipment shown is for illustrative purposes only and may display optional accessories or components specific to their global region. Please contact your local Vermeer dealer for more information on machine specifications. Vermeer and the Vermeer logo are trademarks of Vermeer Manufacturing Company in the U.S. and/or other countries. Volvo and Volvo Penta are trademarks of Volvo Car Corporation. © 2021 Vermeer MV Solutions, Inc. All Rights Reserved. Printed in the U.S.A. Please recycle.

