

CHALLENGER MT800 SERIES | 511-673 HP



**BIG TRACTOR.
BIG PRODUCTIVITY.**

Challenger MT800 SERIES | 511-673 HP

AT A GLANCE

SUPERIOR PERFORMANCE AND INTELLIGENCE ALL COME STANDARD.

Introducing the Challenger® MT800 Series.

The MT800 Series inherits common architecture from the Challenger MT700 Series, the most technologically advanced tractor available today. It's engineered with all the capabilities for which Challenger is known, along with an innovative suite of onboard intelligence upgrades that boost productivity and improve decision-making for your operation. The MT800 Series has been designed with two things in mind—you, and your business.

NOT JUST ENGINEERING. ACCUENGINEERING.™

Challenger's AccuEngineering platform leverages superior design to deliver smarter, more intuitive, more efficient machinery—to help meet the growing needs of our customers. From the controls in the cab to the AccuDrive™ powertrain to the AccuTerminal®, AccuEngineering provides more efficiency, increased productivity, and reduced costs. Experience the new standard of excellence against which all other track tractors will be measured.



Challenger MT800 SERIES | INTELLIGENT FARMING



MOVE INTO THE BIG TIME.



CHALLENGER MT800 IN PROFILE

If you weren't already good at what you do, you probably wouldn't be looking at a Challenger tractor to begin with. Challenger's longtime reputation for uncompromising excellence is further enhanced by the MT800. Technologically advanced, relentlessly dependable, and comfortably easy to operate, the Challenger MT800 provides a solid, reliable return on investment while minimizing downtime. The internally developed single-range AccuDrive powertrain maximizes efficiency and simplifies operation. The low-engine-speed concept allows for greater low-end torque at lower engine RPMs, which means you cover more acres but burn less fuel.

The large footprint provided by the Mobil-trac™ system reduces compaction and helps maintain track-to-ground contact, allowing an operator to run comfortably at higher speeds. That equals more work done with less fuel expense—and a greater ROI. A redesigned primary suspension and cab interior increase ride comfort over long operating hours. The Challenger MT800 Series delivers efficiency, productivity, fuel savings, comfort, and profitability in a track tractor bigger and better than ever.

Up to 2,300 pound-foot of torque worthy of locomotive-like pulling power.

Ideal for:

- Heavy or high-speed tillage
- Large planters and air seeders
- Tile plows
- Large manure tankers or drag-reel lines
- Grain carts
- Showing off to your neighbors

Quick Specs and Features

Min/Max Weight: 42,000 / 59,000 lbs.
(19,051 / 26,762 kg.)

MAN 15.2L or 16.2L, 6 cylinder, Tier 4F

Constant engine power
ECE R120: 511–673 HP (376–495 kW)

Maximum speed: 25 MPH (40 KPH)

Hydraulic Capacity: Std. 58 GPM (220 LPM) /
Opt. 116 GPM (440 LPM)

Rear power lift capacity: up to 20,000 lbs. (9,072 kg.)

AccuDrive Continuously Variable Transmission (CVT)

Track Sizes: 18"–36"

Two major traits stand out: efficiency and reliability. This page is full of both, and it only scratches the surface. Challenger has always been BIG on building uncompromising excellence with unmatched customer care into every machine. And with the Challenger MT800, your opportunity for a BIG return on investment has never been bigger.



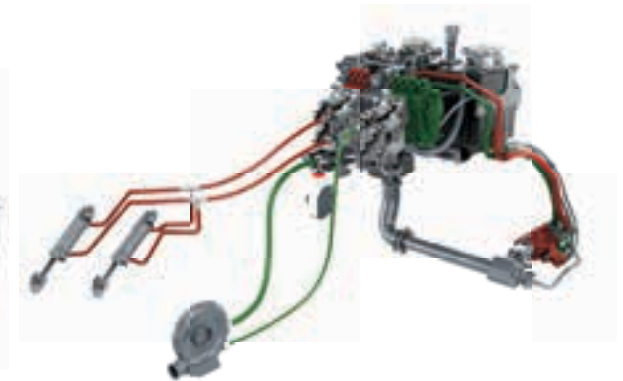
An incredibly smooth, quiet, high-torque-at-low-engine-speed MAN power plant drives more power to the ground. With an RPM band ranging from 1,000 to 1,700 engine RPMs, and peak torque achieved from 1,000 RPMs, the 15.2L MAN engine (MT851, MT856, MT862) or the 16.2L MAN engine (MT867) provides for an incredibly smooth and quiet operating experience, but with BIG torque and BIG fuel savings.



Convenient, comfortable, easy to use. A 10.4" touch screen terminal with integrated guidance, paired with a customizable multi-function joystick, puts everything you need to operate the Challenger MT800 literally at your fingertips. The radio can be controlled via the patented steering wheel with optional radio controls.



Our patented AccuDrive continuously variable transmission now brings the same BIG, record-setting efficiencies to the MT800 Series, providing ease of operation with no range changes required.



The hydraulic system is fully dedicated to the implements it powers—the optional dual-pump, dual-circuit system provides up to 116 GPM of hydraulic oil flow designed to handle the largest air seeders and planters.



The new MT800 Series provides a ride you can't find anywhere else. It starts at the ground with our Mobil-trac system and its midwheel and track-to-track oscillation for better traction, reduced slip, and a better ride. Then from the track system to the chassis of the machine, the advanced design of suspending the hardbar from the chassis of the tractor using dual coil springs and off-road-style heavy-duty shock absorbers allows for increased oscillation of the hardbar. In addition, the two-point cab suspension system ensures that any movement, vibrations, or bumps are dampened.

LOW REV. BIG POWER.

UNCOMPROMISING PERFORMANCE AND RELIABILITY.



Productivity. That's really what you expect, isn't it? And since the MT800 Series is a big Challenger, you expect big productivity, right? Well, you won't be disappointed. It starts with the power of a super-quiet MAN engine that delivers fuel-efficient, high-torque performance. Add to that a hyper-efficient AccuDrive CVT transmission that easily transfers power to the ground, minimizing slip. Add to that a hydraulically driven fan providing on-demand cooling power. So, Challenger's biggest track tractor provides higher performance, less engine noise, reduced fuel costs, and extended service life.

THAT'S A PRETTY BIG DEAL.

- The 16.2L engine used on the MT867 produces up to 673 constant HP
- The 15.2L engine used on the MT851, MT856, and MT862 produces up to 618 constant HP
- Independent, hydraulically controlled variable fan for reduced power consumption and better cooling capacity
- 1,800+ lbs. ft. of torque created and sustained from 1,100 to 1,500 engine RPMs
- AccuDrive CVT transmission, the latest in award-winning transmission innovation, provides optimal coordination with the engine for peak performance and productivity across multiple applications
- Standard 58 GPM hydraulic system with optional dual-pump, dual-circuit system allows for up to 116 GPM of hydraulic oil flow
- Track widths available from 18" to 36" to accommodate all large-draft or row-crop applications

BIG TIME PERFORMANCE. LITTLE TIME WASTED.

There's a new power player in the Challenger MT800 Series: a stepless AccuDrive CVT. The industry's first CVT in a tractor with this level of horsepower. The AccuDrive CVT transmission allows for no range changes, optimizes engine power, and maximizes fuel efficiency. Paired together, the MAN engine and stepless CVT transmission automatically regulate and optimize the engine speed, so you get the required amount of power needed, whether you're going 65 ft./hr. or 25 MPH. This tractor management system is the kind of dynamic operating experience you can only get from Challenger.

The AccuDrive CVT transmission provides optimal coordination with the engine for peak performance and productivity across multiple applications.



BIG COMFORT. LESS FATIGUE.

In the field or on the road, enhanced comfort and stability are integrated into Challenger's Smart Ride and Smart Ride Plus. The key to a smooth ride is where the rubber meets the road. The legendary Mobil-trac system on the Challenger MT800 Series features a long 118 in. (300 cm) wheelbase. Industry-leading pivoting midwheels keep the tracks in constant contact with the ground, resulting in better traction, more pulling ability, and a smoother ride. (A BIG plus for any operator.)

- The superior design of a long wheelbase with four sets of midwheels per side provides improved vehicle balance while distributing the tractor weight over a greater area, effectively reducing the deep compaction that restricts plant root growth, even with the narrow 18 in. (46 cm) belts.
- The unique pivoting midwheels maintain constant ground contact over challenging terrain. The system bridges terraces and crested surfaces for unmatched traction and ride quality.
- 15 in. polyurethane midwheels with ultra-high molecular weight wear rings that reduce heat and improve track life are standard.



SMART RIDE™

In the field or on the road? Where do you want to feel most comfortable and have the most control? The Smart Ride suspension on the Challenger MT800 Series handles both environments in a big way. The advanced design of suspending the hardbar from the chassis of the tractor using dual coil springs and off-road-style heavy-duty shock absorbers allows for increased oscillation of the hardbar.

- The Smart Ride system allows for 10" of hardbar suspension travel
- The left and right undercarriages move up and down independently from the tractor chassis, allowing the tractor to smoothly travel over the field and minimize compaction.



CAB SUSPENSION

When equipped, the Challenger MT800 Series cab suspension consists of two rugged coil-over shock absorbers that provide a significant comfort advantage to the operator by reducing ground vibrations that would typically be transmitted by the axle during rough roading or field conditions.

- This innovative suspension allows for a full 4 in. (100 mm) of travel at the rear of the cab.

SMART RIDE PLUS

When equipped with Smart Ride Plus suspension, the MT800 Series features a load-leveling suspension system. With the push of a button in the cab, Smart Ride Plus uses hydraulic pressure in the track suspension elements to raise or lower the front of the machine. This results in better weight distribution for better traction, ride, and overall performance.



Figure 1: A tractor goes to work without proper tractor and implement weight distribution. This results in insufficient front weight on the tractor, and as a result increases slip.



Figure 2: The MT800 Series, with Smart Ride Plus, allows for easy adjustment of the weight distribution. This results in reduced slip, improved ride comfort, and improved overall performance.

BIG PERFORMANCE ON DEMAND. **EVERY TIME YOU NEED IT.**



Name your implement. The Challenger MT800 Series can handle it, with a hydraulic system fully dedicated to the implements it powers—something the competition can't come close to matching. With multiple hydraulic options, you can be assured of efficient operation time after time. And the unique dual-pump, dual-circuit, load-sensing hydraulic system can independently control both hydraulic pumps, ensuring the needs of even the largest implements are met. BIG power and BIG versatility allow you to do more jobs than ever.

- Two load-sensing pumps provide independent priority functions and supply each consumer with just the right amount of oil pressure and volume through each individual circuit.

FOR EXAMPLE: A fan on a planter requires high flow rates with low oil pressure. Other functions, such as a down-pressure system, require low flow with high oil pressure. With the dual-pump, dual-circuit system on the MT800 Series, a different hydraulic oil pressure can be set for each pump, while a different hydraulic oil flow can be set for each SCV valve.

- The dual-pump system can achieve 68 GPM at 1,000 RPM or 116 GPM at 1,700, so the optimal flow is available on demand.
- Up to eight rear SCV valves are available.

IMPLEMENT CONTROL.



For three-point-hitch-equipped tractors, with either standard or high-lift capacities, the hitch system was designed with the mounted implement in mind. The hitch system has fixed offset, offset, and float mode, which gives the operator total control of the mounted implement. With 12 degrees of movement in the hitch and 11.5 degrees of swing with the drawbar, the MT800 Series steers effortlessly around contours and field obstacles.



INNOVATIVE, INTUITIVE, INVIGORATING—EVEN INVITING.

Enjoy the view. And the comfort. And the fingertip control. Yeah, you're still at work. From the comfort of your air-suspended seat, you have immediate access to the cutting-edge, easy-to-operate AccuTerminal™, where everything you need to control the tractor, implements, and technology is literally at your fingertips. The multi-function armrest has simple, color-coordinated operating controls to complement the multi-function joystick. Is all this a big improvement over what you've been driving? This tractor is perfectly designed to be one with its operator, from the cab suspension, to the airtight cab door enclosure.

OTHER HIGHLIGHTS INCLUDE:

- Optional mechanical cab suspension to prevent bouncing, minimize vibration, and ensure maximum comfort in any conditions.
- Door and window seals precision engineered to be absolutely uniform, keeping noise out and comfort in.

CAB COMFORT AND QUALITY. WITH TECHNOLOGY TO IMPROVE YOUR ROI.

- AccuTerminal—Clear, practical 10.4 in. display with full-screen, half-screen, and split-screen modes, or a four-in-one view, with each section displaying a different function; fully integrates tractor and implement controls, camera function, guidance and documentation.
- Advantage Joystick—Assign up to two preset cruise control and engine speeds and seamlessly adjust your ground speed with the easy-to-use Advantage Joystick.
- TaskDoc®—Quickly capture—and wirelessly transfer—data like seed quantity, fertilizer applied, or fuel consumption per acre for analysis and documentation. Record GPS position data and transfer it in near real time, enabling mapping and automated, seamless exchanges with ISOXML-compatible field files.
- AgControl®—Call up, visualize as applied maps, and automatically execute variable-rate application of seeds, fertilizer, and pesticides, based on agronomic needs. Plan farm inputs in field files, precisely apply them every time, and save on operating inputs.
- Section Control—Implements fully automatic section control, and ensures seeds, fertilizer, and pesticides are applied evenly and economically, preventing overlaps; switch up to thirty-six sections when operating ISOBUS-capable planters, drills, or sprayers.

KEEPING AN EYE ON IT ALL.

You can't be everywhere at once, right? Wrong.

CHALLENGER CONNECT™—A control tower for your fleet, seamlessly linking your operators, your office, and your dealer. Through one easy-to-use interface—on a smartphone, tablet, or laptop—Challenger Connect provides signals that enable remote, real-time monitoring, decision-making, and even diagnostics.

YOUR OFFICE—See where your machines are, what they're doing, and how they're performing—in near real time or historically. From anywhere. This operational visualization enables everything from scheduling timely refueling to providing documentation for invoicing.

YOUR DEALER—When enabled, your dealer can remotely access and monitor fault codes and performance parameters, anticipating or diagnosing problems, which can speed up service, minimize downtime, and reduce cost.

YOUR OPERATORS—Operators can focus on their task at hand, knowing both you and your dealer are practically right there with them in the cab.



FUSE
SMART FARMING. SYNCHRONIZED.

Learn more or get started
at get.agcoconnect.com

A BETTER-CONNECTED AGRIBUSINESS IS A MORE PRODUCTIVE AGRIBUSINESS.

Data and connectivity are powerful tools. But, you should never feel like they're holding you hostage. Fuse[®], AGCO's next-generation approach to precision agriculture, offers advanced technology solutions to support the entire crop cycle. From planning, field prep, and planting, through crop care, harvesting, and grain storage, Fuse Technologies and Fuse Connected Services help you connect your farm assets. They provide the support to help you manage farm data, make more informed business decisions and reduce input costs.

SEAMLESS. FINALLY.

You or your agronomist can send files directly to the machine, without a complicated ten-step process. A growing list of farm management information software (FMIS) can link directly to your machine. One simple click sends or receives files.

GO. GO. GO.

Downtime is like burning cash. Avoid it with Challenger Connect* telemetry, our industry-first satellite and dual-band cellular technology that connects you, your machine, and your dealer, if you wish. Monitor near-real-time performance, stay on top of maintenance intervals, and even predict trouble before it stops you.

ALWAYS SIMPLIFYING.

Fuse Technologies is always working to simplify your world, with tools like the online Wayline Converter Tool and an expanding list of industry connections.



YOUR LINK TO OPTIMIZATION AND UPTIME. Too busy to monitor everything yourself? Fuse and your Challenger dealer have your back. Fuse Connected Services lets you receive equipment and operational support from your AGCO[®] dealer. Through a combination of technology products and dealer services, you can improve efficiency, increase productivity, and optimize farming operations throughout the crop cycle. Services include off-season inspections, preventative maintenance, condition monitoring, training, and year-round support.

THE FUSE CONTACT CENTER provides real-time support for product setup, operation, and calibration. Call AGCO Answers: (877) 525-4384.

CHALLENGER MT800 SERIES SPECIFICATIONS

	MT851	MT856	MT862	MT867
ENGINE				
Constant power ECE R 120 at 1,700 RPM (HP ISO) (PS / kW)	511 / 376	564 / 415	618 / 455	673 / 495
No. of cylinders	6 cylinder			
Cylinder bore / stroke (in. / mm)	5.43 / 138 x 6.69 / 170			5.59 / 142 x 6.69 / 170
Displacement (in. ³ / L)	927 / 15.2			998.6 / 16.2
Rated engine speed (RPM)	1,730			
Max. torque (@ 1,450 RPM) (lb./ft. / Nm)	1,844 / 2,500	1,991 / 2,700	2,139 / 2,900	2,286 / 3,100
Torque rise (based on 1,700 RPM) (%)	10	12	14	16
Diesel tank capacity (gal. / L)	350 / 1,320			
DEF capacity (gal. / L)	35.7 /135			
Oil change interval (operating hours)	500			
TRANSMISSION / PTO				
Type / model	AccuDrive CVT / TA 400T			
Speed range	Forward – 65 ft./hr. to 25 MPH / 20 MPH to 40 KPH; Reverse – 65 ft./hr to 8.7 MPH / 0.02 MPH to 14 KPH			
Max. speed (MPH / KPH)	25 / 40			
Rear PTO	1000 / 1000E			
HYDRAULICS				
Type	Closed venter / Pressure & flow compensation			
Hydraulic pump capacity @ 1,700 RPM (GPM / LPM)	1 pump: 58 / 220; 2 pumps: 116 / 439 58 / 220 + 58 / 220			
Working pressure (psi / bar)	2,900 / 200			
Hydraulic control valves—3-pt.	6 standard			
Hydraulic control valves—Drawbar	4 standard & 6 or 8 optional			
3-POINT				
Type	Steerable 3-point			
High lift capacity @ ball ends (lbs. / kg.)	20,000 / 9,072			
Standard lift capacity @ ball ends (lbs. / kg.)	15,000 / 6,800			
WEIGHTS AND DIMENSIONS				
Unladen weight does not include ballast weights (lbs. / kg.)*	42,000 / 19,051			
Max. permissible overall weight (lbs. / kg.)	59,000 / 26,762			
Overall length (in. / mm)	266 / 6,758			
Overall width (in. / mm)	Standard gauge: 116.1 / 2,950 / Wide gauge: 141.8 / 3,601			
Overall height (in. / mm)	148 / 3,754			
Ground clearance (in. / mm)	14.1 / 359			
Wheelbase—front idler to rear axle (in. / mm)	118 / 3,000			
ELECTRICAL EQUIPMENT				
Starter (V)	24			
Battery (V / Ah)	3 x 12 / 77			
Alternator (A)	325			

* With 30" General Ag Tracks Specifications are manufacturer's estimates at time of publication and are subject to change without prior notification.



MT800 SERIES | INTELLIGENT FARMING

To learn more about Intelligent Farming, to demo a Challenger MT800 Series track tractor, or to find your local Challenger dealer, visit challenger-ag.us.

LOW-RATE, FLEXIBLE FINANCING

With competitive rates and easy terms, your Challenger dealer and AGCO Finance® offer great ways to buy, lease, or rent your new machine. Visit agcofinance.com.

QUALITY PARTS

Genuine Challenger replacement parts are made to the same high standards as those used on the assembly line, so you can always keep your Challenger MT800 Series tractor running like new. Plus, they come with our industry-leading, one-year parts, six-months labor guarantee, when dealer installed. Visit agcopartsandservice.com/na/en_US/parts/brands/challenger.html.

AGCO PROTECTION

Your Challenger-built machine is a major investment. So protect it, and your business. Whether you're buying new or pre-owned equipment, this specially designed coverage begins when your warranty ends. Get peace of mind knowing your Challenger machine, and your business, will stay up and running. AGCO Protection is available through your Challenger dealer.

AGCO ANSWERS

At AGCO, customer care isn't just a department, it's a commitment. We'll do our best to answer any question promptly, or put you in touch with someone who can. AGCO Answers (877) 525-4384 or agcoanswers@agcocorp.com.



For more than 30 years, in more than 140 countries worldwide, AGCO has been on a mission to become the single resource farmers can depend on for innovative, leading-edge thinking, equipment, and technology. And, today, you know AGCO brands, even if you don't know the AGCO name. While AGCO equipment may not all share the same logo or same color, they all have one thing in common—the ability to help farmers be as productive and profitable as they can possibly be.



© 2020 AGCO Corporation. Challenger is a brand of AGCO Corporation. AccuDrive™, AccuEngineering™, AccuField Command™, AccuTerminal™, Accu-VT™, AGCO®, AGCO Finance®, AGCO Power™, AgCommand®, AgControl®, Fuse®, Maxx Ride™ and TaskDoc® are trademarks of AGCO. Auto-Guide™, Challenger® and Mobil-trac™ are trademarks of Caterpillar Inc. and are used under license by AGCO. Bluetooth® is a trademark of Bluetooth SIG, Inc. NovAtel™ is a trademark of NovAtel Inc. Trimble® and xFill® are trademarks of Trimble Inc. All rights reserved. CH20B001AG POD HS

AGCO may at any time, and from time to time, for technical or other necessary reasons, modify any of the data, specifications or warranty of the products described herein. Some equipment shown may be optional. Attention: Photographs in this publication may show protective shields and guards open or removed for the purposes of illustration. Be certain all shields and guards are in place during operation.