

PIPELINE TRENCHERS



PIPELINE TRENCHERS

Vermeer



TABLE OF CONTENTS

The trencher advantage	pg. 3
The right trencher for any industry	pg. 4
Trencher overview	pg. 4
Vermeer attachments	pg. 5
TEC® Plus computer-aided control system with SmartTEC	pg. 6
Trencher common features	pg. 6
The Vermeer family of trenchers	pg. 7
T1255 Commander® 3 trencher	pg. 8
T1155 Commander 3 trencher	pg. 9
T1055 Commander 3 trencher	pg. 10
T955 Commander 3 trencher	pg. 11
T755 Commander 3 trencher	pg. 12
T655 Commander 3 trencher	pg. 13
T558 Commander 3 trencher	pg. 14
T555 Commander 3 trencher	pg. 15
A rock lab built to test the limits	pg. 16
Manage trencher performance efficiently	pg. 16
Service and support	pg. 17
Warranty and coverage	pg. 17
Product specifications	18-21





THE TRENCHER ADVANTAGE

Vermeer Corporation has a rich history in the trenching industry. In 1956, Vermeer introduced the self-propelled Pow-R-Ditcher designed to help farmers drain fields. Vermeer trenchers grew beyond the farm in the 1960s. To support suburban growth in the U.S., Vermeer introduced a full line of rubber-tire and track trenchers to efficiently place utilities like electricity, water and sewer underground using open-cut methods. Suburban sprawl was underway.

In the 1980s, Vermeer introduced bigger, tougher and more powerful trenchers to take on jobs in places and ground conditions no one thought possible to trench. Builders could now efficiently build an underground pipeline network connecting energy sources to markets around the world. The pipeline market took off with Vermeer trenchers leading the charge.

Today, Vermeer has expanded to become a market leader in the trenching industry, supporting customers all over the world. A complete range of machines gives operators the power to dig trenches up to 4' (1.2 m) wide, or to depths as deep as 18' (5.5 m) below ground. That's why the pipeline industry continues to count on Vermeer.

The singular power of Vermeer trenchers

Under most ground conditions, a single Vermeer trencher can perform the work of several excavators. Operators can trench fast and efficiently with minimized chain wear due to its low-speed, high-torque, splined headshaft motor and variable chain speed.

In soil conditions where excavators may dig inches per minute, a Vermeer trencher can cut several feet per minute. With a clean, level bottom, the trench needs little bedding. The trench will have straight walls (vertical walls when using a trencher equipped with Auto Level), thus removing only the amount of spoil needed. Unlike excavators, Vermeer trenchers cut their own spoils, providing their own backfill. The result? A clean, custom trench ready for installation with built-in backfill. Quickly and all in one shot.

The trencher advantage:

- One trencher can do the work of multiple excavators.
- Trencher requires less labor, fuel and materials.
- Depending on requirements, spoil can be used as backfill without crushing.
- Ditch bottom is clean.
- Ditch walls are cleaner and straighter compared to those created with an excavator.
- You can maximize your job performance and efficiency.

THE RIGHT TRENCHER FOR ANY INDUSTRY

Vermeer has the right trencher for a wide range of trenching jobs, including pipeline distribution, power, water, sewer, gas, power and underdrain installations and other heavy-duty trenching tasks.

Pipeline installation

In natural gas and oil pipeline installation, the trench must be deep enough to accommodate the pipeline, plus the required distance from the pipeline to the ground surface. Certain areas, such as waterways and road crossings, require a greater minimum depth to meet the regulations for natural gas pipelines.

Electric transmission lines

Most commonly, trenches for electric transmission lines are at least 6'-8' (1.8 m-2.4 m) deep to keep cables below the frost line. The trench dimensions will be greater in places where vaults are located. The dimensions of the trench might need to be deeper and wider to avoid underground obstacles. When trenches are deeper than anticipated, the width of the trench must be widened for purposes of stability.

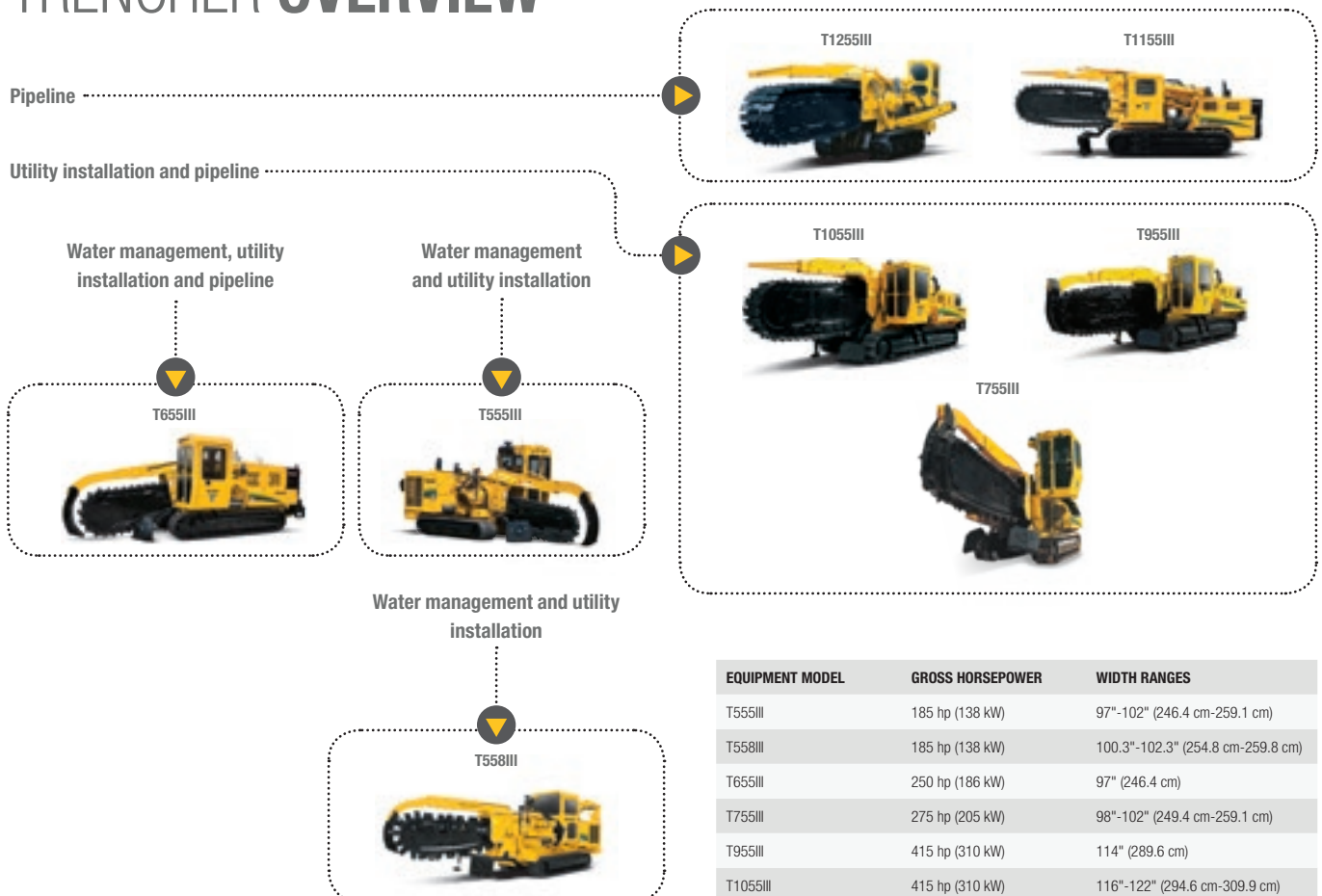
Water and sewer installation

When a new urban subdivision is in developmental stages, there are many pieces of infrastructure that need to be installed. Vermeer trenchers can play a role in opening up the ditch for the water and sewer installation, especially when the ground conditions are rocky.

Water management

Controlling water flow after heavy rainfall is important in many situations, like farm tiling and highway drainage. There are many benefits for tiling a farm field, such as soil erosion prevention, better root systems for the crops, reduced yield variation and more. In the highway sector, maintaining a firm subbase to the roadways is critical to keeping the traveled surface of the road in good shape over its designed life, and managing the drainage runoff from the roadway is a critical piece to keeping the subbase at a uniform compaction for this to work as designed. Vermeer trenchers are used in many places, opening the ditch and placing corrugated tile that is used to create a flow path for the water to get it to a place where it can be managed.

TRENCHER OVERVIEW



EQUIPMENT MODEL	GROSS HORSEPOWER	WIDTH RANGES
T555III	185 hp (138 kW)	97"-102" (246.4 cm-259.1 cm)
T558III	185 hp (138 kW)	100.3"-102.3" (254.8 cm-259.8 cm)
T655III	250 hp (186 kW)	97" (246.4 cm)
T755III	275 hp (205 kW)	98"-102" (249.4 cm-259.1 cm)
T955III	415 hp (310 kW)	114" (289.6 cm)
T1055III	415 hp (310 kW)	116"-122" (294.6 cm-309.9 cm)
T1155III	540 hp (403 kW)	118"-120" (292.1 cm-304.8 cm)
T1255III	600 hp (447 kW)	134" (340.4 cm)

VERMEER ATTACHMENTS



Rockwheels: Cut through rock, concrete and other tough surfaces with a Vermeer rockwheel. Designed to take on challenging ground conditions, these rockwheels will give you clean, straight-sided trenches for a variety of concrete-cutting projects, including patch and joint placement on interstates, streets and highways, or on decorative stones.



Bucket wheels: Trenching in soft soils can be tricky. The bucket wheel is designed to maximize productivity in soft soils. Instead of the typical chain configuration, which positions the carbide trencher teeth in a specific formation or pattern, the wheel features a series of buckets, which rotate in a circular motion, helping move more dirt from the trench.



Loading conveyor: The loading conveyor is used when you are in a narrow right of way and don't have room to pile spoil and still drive next to the trench. Also other situations require that the cut material is hauled offsite so you can directly load to the truck.



Tile layer: Optimize water management by installing field drainage tile with the tile layer attachment (available on T555III and T655III only).

TEC® Plus computer-aided control system with SmartTEC

All Vermeer trenchers come equipped with SmartTEC performance software, a control platform that helps optimize productivity according to real-time machine control prompts. The platform is convenient to learn and operate with user-friendly screens showing operators what adjustments can be made to help increase production and optimize performance as ground conditions change.

The TEC Plus system and SmartTEC performance screens use CAN bus technology to continuously monitor machine performance data — providing proactive machine maintenance and operator performance analysis.



TRENCHER COMMON FEATURES



- 1) Trencher cleaner arch
- 2) Teeth
- 3) Boom top rollers
- 4) Bridge

- 5) Boomhead
- 6) Cab
- 7) Cross conveyor
- 8) Tracks

- 9) Dirt drags
- 10) Trencher boom
- 11) End idler
- 12) Trench cleaner shoe

THE VERMEER FAMILY OF TRENCHERS

Time- and contractor-tested Vermeer trenchers have cut through some of the world's toughest landscapes. Built hard-nosed to power through soft soils to abrasive rock, the Vermeer family of trenchers has been an asset on the pipeline for 50 years. Whether you're cutting through hard rock or installing a cross-country pipeline, Vermeer has a trenching solution to meet your needs.

FEATURES AND BENEFITS

Common trencher features

- Tough trench digging (including solid rock) is effective with minim wear due to low-speed, high-torque, splined headshaft motors. Due to the high torque rise engine, when you encounter tough trench digging conditions, the engine speed drops, increasing the torque for more power to pull through.
- A hydrostatic transmission provides maximum power, high torque and is backed by a 1-year, 1000-hour extended care package.
- Help extend boom life with features such as high-alloy bottom trencher boom wear strips and optional boom-top rollers.
- An elevating cab provides the operator with a clear view of the boom, trench and conveyor. (Not available on fixed cab models: T555III, T558III and T655III.)
- Choose from a variety of boom lengths to match jobsite requirements.
- Vermeer TEC Plus system communicates with multiple machine control modules for real-time performance data and advanced troubleshooting capabilities.
- Minimize turf damage and help machine stability with self-leveling tracks that distribute weight evenly. On select models, an oscillating track frame allows the trencher to follow the ground's contour for a vertical trench on slopes up to 10°.
- An optional wireless remote control provides full operation functionality and is designed for conditions such as working near a high wall or unloading/loading onto a trailer.
- Help decrease trencher teeth inspection and replacement maintenance time through a remote attachment control that can start or stop the engine, raise or lower the trencher boom and rotate chain at a slow speed.
- Trench up against guardrails, buildings, walls and other obstacles with offset trencher models.

Optional features

- Optional drags are available on all models and are used to clean the surface of the trench and pull spoil into the ditch.
- A split cab design reduces the need for over-width trucking permits. The cab swings open and the cab locking bar is then bolted in to secure the cab.
- Standard cutter setups provide for a wide range of cutting conditions along with custom design options to meet customer needs.

The Vermeer advantage

- Vermeer Vantage Track Extended Care Service Program offers an optional 3-year/3,000-hour or 5-year/5,000-hour heavy equipment extended care on the components of the closed-loop hydrostatic system.
- Vermeer dealers offer comprehensive service and genuine Vermeer replacement parts.
- Add the Vermeer Confidence Plus® asset protection program to give your operation a major advantage — providing the ongoing service you need to help protect the productivity and value of your Vermeer equipment.

T1255III

The heavy-duty T1255III from Vermeer provides the trench digging power needed to cut through rock for large-diameter applications, as well as major pipeline projects with high-volume spoil removal through an extra-wide 36" (91.4 cm) dirt conveyor opening.



Trencher



Terrain Leveler[®]
surface excavation
machine (SEM)



Rockwheel



Bucket wheel

PRODUCT SPECIFICATIONS

Height range: 12.2' (3.7 m)

Max length: 53.8' (16.4 m)

Weight range: 150,000 lb-205,000 lb (68,038.9 kg-92,986.4 kg)

Width range: 11.2' (3.4 m)

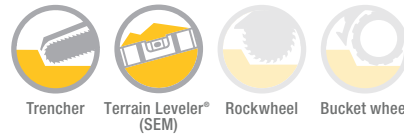
Engine make and model: Caterpillar C18 ACERT

Engine horsepower: 600 hp (447 kW)



T1155III

The T1155III is the ideal trenching machine to penetrate rock, combining electronics, versatility, a wide boom attachment and 540 horsepower (403 kW) of muscle.



Trencher Terrain Leveler® (SEM) Rockwheel Bucket wheel

PRODUCT SPECIFICATIONS

Height range: 12.2' (3.7 m)

Max length: 45.3' (13.8 m)

Weight range: 120,000 lb-170,000 lb (54,431.1 kg-77,110.7 kg)

Width ranges: 9.8'-10' (2.9 m-3 m)

Engine make and model: Caterpillar C15 ACERT

Engine horsepower: 540 hp (403 kW)

T1055III

For pipeline and utility installation projects requiring high horsepower and deep digging depths, Vermeer offers the T1055III.



Trencher



Terrain Leveler*
(SEM)



Rockwheel



Bucket wheel

PRODUCT SPECIFICATIONS

Height range: 11.3' (3.4 m)

Max length: 41' (12.5 m)

Weight range: 87,000 lb-124,000 lb (39,463.5 kg-56,245.5 kg)

Width ranges: 9.7'-10.2' (3 m-3.1 m)

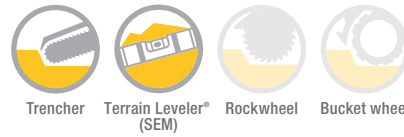
Engine make and model: Caterpillar C13 ACERT

Engine horsepower: 415 hp (310 kW)



T955III

Cut through tough trench digging conditions on pipeline and utility installation projects with the Vermeer T955III, which features an extra wide 30" (76.2 cm) dirt conveyor opening for high-volume spoil removal.



Trencher Terrain Leveler® (SEM) Rockwheel Bucket wheel

PRODUCT SPECIFICATIONS

Height range: 11.3' (3.4 m)

Max length: 39.7' (12.1 m)

Weight range: 78,000 lb-109,000 lb (35,380.2 kg-49,441.6 kg)

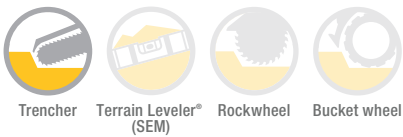
Width range: 9.5' (2.9 m)

Engine make and model: Caterpillar C13 ACERT

Engine horsepower: 415 hp (310 kW)

T755III

When you're digging in tough trenching conditions, the T755III will stand firm with up to 60,000 lb (27,215.5 kg) of tractive force on the ground.



Trencher Terrain Leveler* (SEM) Rockwheel Bucket wheel

PRODUCT SPECIFICATIONS

Height range: 10' (3 m)

Max length: 33.6' (10.2 m)

Weight range: 49,000 lb-75,000 lb (22,226 kg-34,019.4 kg)

Width ranges: 8.2'-8.5' (2.5 m-2.6 m)

Engine make and model: Engine option one: Caterpillar C9 ACERT Tier 3
Engine option two: John Deere 6090HFC09 Tier 4 Final

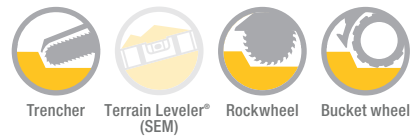
Engine horsepower: 275 hp (205 kW)



Photo acquired using unattended camera.

T655III

Equip the T655III with optional attachments to tackle a myriad of trenching jobs. The bucket wheel attachment is designed for the installation of small-diameter cross-country pipelines and maximizes productivity in soft soils. The rockwheel attachment is designed for highway lighting, fiber installation and rock applications.



PRODUCT SPECIFICATIONS

Height range: 9.9' (3 m)

Max length: 30.1' (9.2 m)

Weight range: 40,000 lb-59,500 lb (18,143.7 kg-26,988.7 kg)

Width range: 8.1' (2.5 m)

Engine make and model: John Deere 6090HF

Engine horsepower: 250 hp (186 kW)

T558III

Dig alongside roads, curbs, buildings and walls with the fully hydrostatic sliding offset T558III. An optional stowable loading conveyor stores conveniently, and unlike many competitive models, does not require removal for transportation.



Trencher



Terrain Leveler* (SEM)



Rockwheel



Bucket wheel

PRODUCT SPECIFICATIONS

Height range: 9.9' (3 m)

Max length: 30.1' (9.2 m)

Weight range: 40,000 lb-59,500 lb (18,143.7 kg-26,988.7 kg)

Width range: 8.1' (2.5 m)

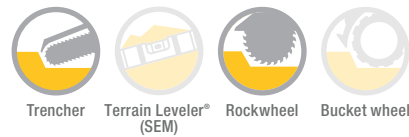
Engine make and model: John Deere 6068H Tier 3

Engine horsepower: 250 hp (186 kW)



T555III

Equipped for tough trenching jobs around the world, the T555III is available with a 4", 5", 6" or 8" (1.2 m, 1.5 m, 1.8 m or 2.4 m) trencher boom capable of trenching widths up to 24" (61 cm). An optional hydrostatic rockwheel attachment cuts depths up to 36" (91.4 cm) in some of the toughest rock conditions.



Trencher Terrain Leveler® (SEM) Rockwheel Bucket wheel

PRODUCT SPECIFICATIONS

Height range: 9.8' (3 m)

Max length: 25' (7.6 m)

Weight range: 28,000 lb-36,500 lb (12,700.6 kg-16,329.3 kg)

Width ranges: 8.1'-8.5' (2.5 m-2.6 m)

Engine make and model: John Deere 6068H

Engine horsepower: 185 hp (138 kW)

A ROCK LAB BUILT TO TEST THE LIMITS

The biggest question about trenchers: "How will it perform in my conditions?"

Environmental conditions can lead to vast differences between, and within, rock types. This ultimately impacts the performance of a trencher and the resulting ditch. Therefore, it's important to know the compressive strength, or hardness, of the rock, as well as its density, abrasivity and tensile strength — to then help determine the appropriate machine for the job.

Back in 2000, Vermeer made a significant investment to enhance its rock testing capabilities by building a cutting-edge rock test laboratory following international and domestic geological society standards.

Calculator costs and operating expenses are based on estimates considering customer-provided data and assuming proper use, maintenance and operation. Actual operating costs and return on investment will vary based on conditions, price fluctuations, polymer use and other external factors. This is a tool for estimating only and is not a guarantee of actual results.

To date, our rock lab has tested thousands of rock samples from across the world. While we sample and test rock, we also go out into the field and estimate how our machines will perform in that rock.

The following tests are performed at the Vermeer Rock Lab:

- Unconfined compressive strength (UCS)
- Cerchar abrasivity index
- Indirect tension
- Vermeer energy index
- Estimated maintenance costs
- Estimated operating costs
- Estimated cost per ton or cost per volume

MANAGE TRENCHER PERFORMANCE EFFICIENTLY

Are you limiting the productivity of your equipment — without even realizing it? Vermeer Fleet and Vermeer Fleet +Edge help increase machine productivity by managing and analyzing operational data captured in near real time. Operations and fleet managers can review machine information at any point in time during or after a trenching operation to help improve the performance of the equipment and crews.

Vermeer Fleet

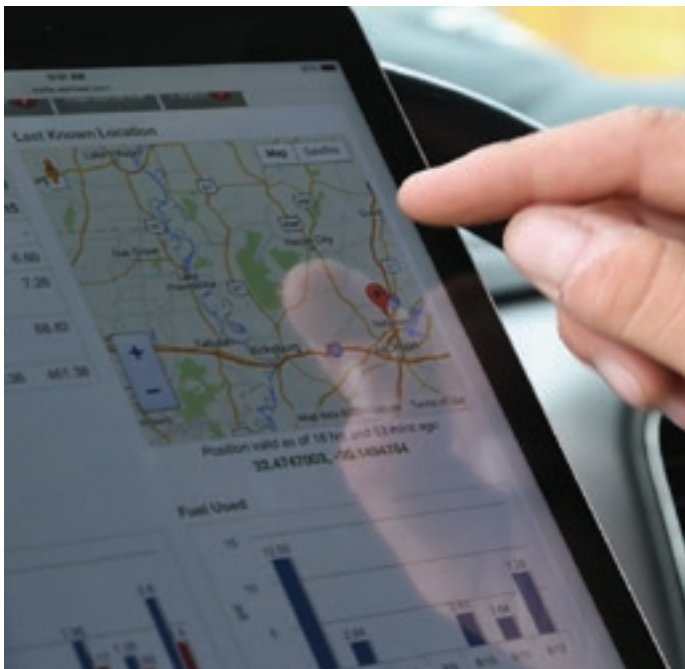
Vermeer Fleet keeps you in the know of your machines. This user-friendly online productivity and jobsite management tool lets you remotely view key telematics, monitor productivity and help optimize your machine and operator performance on your Vermeer Fleet-enabled equipment. Conveniently monitor key telematics like machine idle times and estimated fuel consumption to help manage operating costs.

Vermeer Fleet +Edge

Everything offered in Vermeer Fleet — plus even more. Vermeer Fleet +Edge includes advanced productivity tools such as SmartTEC to monitor actionable machine information like productivity tracking and performance measurements for operations and fleet managers.

- Machine usage
- Ground drive speed*
- Neglected prompts*
- Attachment knob*
- Propel command*
- Percent engine load*
- Machine totals
- Attachment pressure*
- Load knob*
- Ground drive switch*

*Data is only stored when the machine is in work mode.





SERVICE AND SUPPORT

You deserve an equipment partner who understands the stresses and risks inherent to the pipeline frontier, while offering the expertise and support necessary to keep you running – an ally like Vermeer.

Vermeer has more than 50 years of experience in the trenching business, and we're committed to offering our partners in progress the solutions that help move your business and the world forward.

With a global presence from local dealers, pipeline trailblazers can rest assured Vermeer has an expert nearby, ready to support a variety of projects.

WARRANTY AND EXTENDED COVERAGE

Vermeer stands behind its products to help give customers peace of mind. Vermeer trenchers feature a 1-year/1000-hour standard limited warranty and offer optional extended care coverage for either 3 years/3000 hours or 5 years/5000 hours on select components.

FOLLOW US ON:



DIMENSIONS	T555III	T558III	T655III
Approach angle	17°	25°	16°
Height range	9.8' (3 m)	9.9' (3 m)	9.9' (3 m)
Length with 20" (50.8 cm) end idler and 2' (0.6 m) boom	NA	28.2' (8.6 m)	NA
Length with 20" (50.8 cm) end idler and 4' (1.2 m) boom	21' (6.4 m)	30.4' (9.3 m)	25.6' (7.8 m)
Length with 20" (50.8 cm) end idler and 5' (1.5 m) boom	NA	NA	NA
Length with 20" (50.8 cm) end idler and 6' (1.8 m) boom	23' (7 m)	32.7' (10 m)	27.8' (8.5 m)
Length with 20" (50.8 cm) end idler and 8' (2.4 m) boom	25' (7.6 m)	NA	30.1' (9.2 m)
Length with 20" (50.8 cm) end idler and 10' (3.1 m) boom	NA	NA	NA
Length with 30" (76.2 cm) end idler and 4' (1.2 m) boom	NA	29.4' (9 m)	NA
Length with 30" (76.2 cm) end idler and 5' (1.5 m) boom	NA	30.8' (9.4 m)	NA
Length with 30" (76.2 cm) end idler and 6' (1.8 m) boom	NA	32.1' (9.8 m)	NA
Length with 40" (101.6 cm) end idler and 4' (1.2 m) boom	21' (6.4 m)	NA	23.6' (7.2 m)
Length with 40" (101.6 cm) end idler and 5' (1.5 m) boom	22' (6.7 m)	NA	25.3' (7.7 m)
Length with 40" (101.6 cm) end idler and 6' (1.8 m) boom	23' (7 m)	NA	26.3' (8 m)
Length with 40" (101.6 cm) end idler and 8' (2.4 m) boom	NA	NA	28.5' (8.7 m)
Length with 40" (101.6 cm) end idler and 10' (3.1 m) boom	NA	NA	NA
Length with 40" (101.6 cm) end idler and 12' (3.7 m) boom	NA	NA	NA
Length with 40" (101.6 cm) end idler and 14' (4.3 m) boom (with restraint bar)	NA	NA	NA
Length with 50" (127 cm) end idler and 8' (2.4 m) boom	NA	NA	NA
Length with 50" (127 cm) end idler and 10' (3.1 m) boom	NA	NA	NA
Length with 50" (127 cm) end idler and 12' (3.7 m) boom	NA	NA	NA
Length with 50" (127 cm) end idler and 14' (4.3 m) boom (with restraint bar)	NA	NA	NA
Length with 50" (127 cm) end idler and 16' (4.9 m) boom (with restraint bar)	NA	NA	NA
Length with 50" (127 cm) end idler and 18' (5.5 m) boom (with restraint bar)	NA	NA	NA
Weight range	28,000 lb-36,500 lb (12,700.6 kg-16,329.3 kg)	39,000 lb-52,000 lb (17,690.1 kg-23,586.8 kg)	40,000 lb-59,500 lb (18,143.7 kg-26,988.7 kg)
Width range	8.1'-8.5' (2.5 m-2.6 m)	8.1' (2.5 m)	8.1' (2.5 m)

ENGINE OPTION ONE

Make and model	John Deere 6068H Tier 3	John Deere 6068H Tier 3	John Deere 6090HF Tier 3
Gross horsepower	185 hp (138 kW)	185 hp (138 kW)	250 hp (186 kW)
Rated engine rpm	2400	2400	2200
Number of cylinders	6	6	6
Fuel tank capacity	110 gal (416.4 L)	100 gal (378.5 L)	135 gal (511 L)
Operating range	11.8 hr	9.8 hr	11 hr
Fuel consumption at full load	9.3 gph (35.2 L/hr)	10.2 gph (38.6 L/hr)	12.3 gph (46.6 L/hr)
Maximum engine operating angle*	25°	25°	30°
Air cleaner	Dry-type with precleaner	Dry-type exhaust aspirated	Dry-type with precleaner
Aspiration	Turbocharged and air-to-air aftercooled	Turbocharged and air-to-air aftercooled	Turbocharged and air-to-air aftercooled
Cooling medium	Liquid	Liquid	Liquid
Electrical system	24-volt DC	12-volt DC	24-volt DC
Oil filter	Full flow	Full flow	Full flow

ENGINE OPTION TWO

Make and model	John Deere 6068HFC08 Tier 4 Final	NA	John Deere 6090HFC09 Tier 4 Final
Gross horsepower	185 hp (138 kW)	NA	250 hp (186 kW)
Rated engine rpm	2400	NA	2200
Number of cylinders	6	NA	6
Fuel tank capacity	110 gal (416.4 L)	NA	135 gal (511 L)
Operating range	11.8 hr	NA	11 hr
Fuel consumption at full load	9.3 gph (35.2 L/hr)	NA	12.1 gph (45.8 L/hr)
Maximum engine operating angle*	25°	NA	30°
Air cleaner	Dry-type with precleaner	NA	Dry-type with precleaner
Aspiration	Turbocharged and air-to-air aftercooled	NA	Turbocharged and air-to-air aftercooled
Cooling medium	Liquid	NA	Liquid
Electrical system	24-volt DC	NA	24-volt DC
Oil filter	Full flow	NA	Full flow

*Operating angles do not indicate safe machine operating angles.

T755III	T955III	T1055III	T1155III	T1255III
22°	16°	16°	16°	15°
10' (3 m)	11.3' (3.4 m)	11.3' (3.4 m)	12.2' (3.7 m)	12.2' (3.7 m)
NA	NA	NA	NA	NA
NA	NA	NA	NA	NA
NA	NA	NA	NA	NA
NA	NA	NA	NA	NA
NA	NA	NA	NA	NA
NA	NA	NA	NA	NA
NA	NA	NA	NA	NA
NA	NA	NA	NA	NA
NA	NA	NA	NA	NA
NA	NA	NA	NA	NA
28' (8.5 m)	NA	NA	NA	NA
29.1' (8.9 m)	32.2' (9.8 m)	32.2' (9.8 m)	NA	NA
31.3' (9.5 m)	34.7' (10.6 m)	34.7' (10.6 m)	NA	NA
33.6' (10.2 m)	37.2' (11.3 m)	37.2' (11.3 m)	NA	NA
NA	39.7' (12.1 m)	39.7' (12.1 m)	NA	NA
NA	NA	41' (12.5 m)	NA	NA
NA	NA	35.8' (10.9 m)	37.3' (11.4 m)	43' (13.1 m)
NA	NA	38.3' (11.7 m)	39.8' (12.1 m)	45.5' (13.9 m)
NA	NA	40.8' (12.4 m)	42.3' (12.9 m)	48' (14.6 m)
NA	NA	NA	43' (13.1 m)	48.8' (14.9 m)
NA	NA	NA	45.3' (13.8 m)	51.3' (15.6 m)
NA	NA	NA	NA	53.8' (16.4 m)
49,000 lb-75,000 lb (22,226 kg-34,019.4 kg)	78,000 lb-109,000 lb (35,380.2 kg-49,441.6 kg)	87,000 lb-124,000 lb (39,463.5 kg-56,245.5 kg)	120,000 lb-170,000 lb (54,431.1 kg-77,110.7 kg)	150,000 lb-205,000 lb (68,038.9 kg-92,986.4 kg)
8.2'-8.5' (2.5 m-2.6 m)	9.5' (2.9 m)	9.7'-10.2' (3 m-3.1 m)	9.8'-10' (2.9 m-3 m)	11.2' (3.4 m)
Caterpillar C9 ACERT Tier 3	Caterpillar C13 ACERT Tier 3	Caterpillar C13 ACERT Tier 3	Caterpillar C15 ACERT Tier 3	Caterpillar C18 ACERT Tier 3
275 hp (205 kW)	415 hp (310 kW)	415 hp (310 kW)	540 hp (403 kW)	600 hp (447 kW)
2200	2100	2100	2100	2100
6	6	6	6	6
145 gal (548.9 L)	184 gal (696.5 L)	184 gal (696.5 L)	270 gal (1022.1 L)	370 gal (1400.6 L)
9.9 hr	8.8 hr	8.8 hr	9.4 hr	11.6 hr
14.7 gph (55.6 L/hr)	20.9 gph (79.1 L/hr)	20.9 gph (79.1 L/hr)	28.9 gph (109.4 L/hr)	31.8 gph (120.4 L/hr)
40°	35°	35°	35°	35°
Dry-type exhaust aspirated	Dry-type exhaust aspirated	Dry-type exhaust aspirated	Dry-type with precleaner	Dry-type with precleaner
Turbocharged and air-to-air aftercooled	Turbocharged and air-to-air aftercooled	Turbocharged and air-to-air aftercooled	Turbocharged and air-to-air aftercooled	Turbocharged and air-to-air aftercooled
Liquid	Liquid	Liquid	Liquid	Liquid
24-volt DC	24-volt DC	24-volt DC	24-volt DC	24-volt DC
Full flow	Full flow	Full flow	Full flow	Full flow
John Deere 6090HFC09 Tier 4 Final	Caterpillar C13 ACERT Tier 4 Final	Caterpillar C13 ACERT Tier 4 Final	Caterpillar C15 ACERT Tier 4 Final	Caterpillar C18 ACERT Tier 4 Final
275 hp (205 kW)	415 hp (310 kW)	415 hp (310 kW)	540 hp (402 kW)	600 hp (447 kW)
2200	2100	2100	2100	2000
6	6	6	6	6
145 gal (548.9 L)	184 gal (696.5 L)	184 gal (696.5 L)	270 gal (1022.1 L)	370 gal (1400.6 L)
11 hr	8.6 hr	8.6 hr	9.6 hr	12.1 hr
13.2 gph (50 L/hr)	21.3 gph (80.6 L/hr)	21.3 gph (80.6 L/hr)	28.1 gph (106.4 L/hr)	30.5 gph (115.5 L/hr)
30°	35°	35°	35°	35°
Dry-type with precleaner	Dry-type with precleaner	Dry-type with precleaner	Dry-type with precleaner	Dry-type with precleaner
Turbocharged and air-to-air aftercooled	Turbocharged and air-to-air aftercooled	Turbocharged and air-to-air aftercooled	Turbocharged and air-to-air aftercooled	Turbocharged and air-to-air aftercooled
Liquid	Liquid	Liquid	Liquid	Liquid
24-volt DC	24-volt DC	24-volt DC	24-volt DC	24-volt DC
Full flow	Full flow	Full flow	Full flow	Full flow

TRACKS	T555III	T558III	T655III
Auto self-level	Yes	Yes	Yes
Ground pressure minimum	5.4 psi (37.2 kPa)	8.5 psi (58.6 kPa)	7.8 psi (53.8 kPa)
Ground pressure maximum	8.4 psi (57.9 kPa)	10.3 psi (71 kPa)	9.7 psi (66.9 kPa)
Tilt track available	Yes	Yes	Yes
Tilt track max angle	10°	10.7°	10.5°
Track drive type	Dual-path hydrostatic with planetary transmission	Dual-path hydrostatic with planetary transmission	Dual-path hydrostatic with planetary transmission
Track length	8.8' (2.7 m)	9.9' (3.5 m)	11.4' (3.5 m)
Track pad type	Single, triple or rubber grouser	Single, double, triple or polyurethane grouser	Single, double or triple grouser
Track pad width	1.3', 1.7' or 2' (0.4 m, 0.5 m or 0.6 m)	1.7' or 2' (0.5 m or 0.6 m)	1.7' (0.5 m)
Track size	FL6	D4	D4
Maximum ground speed — low	194 fpm (59.1 m/min)	105.8 fpm (32.2 m/min)	114 fpm (34.7 m/min)
Maximum ground speed — high	248 fpm (75.6 m/min)	212 fpm (64.6 m/min)	227 fpm (69.2 m/min)
Parking and emergency brake	Spring-applied, hydraulic release, wet disc brake	Spring-applied, hydraulic release, wet disc brake	Spring-applied, hydraulic release, wet disc brake
Service brakes	Hydrostatic	Hydrostatic	Hydrostatic

CONVEYOR	T555III	T558III	T655III
Belt width	24" (61 cm)	24" (61 cm)	24" (61 cm)
Conveyor belt speed	823 fpm (250.9 m/min)	0-988 fpm (0-301.1 m/min)	0-758 fpm (231 m/min)
Conveyor belt style	Cleated with sidewall	Cleated	Cleated
Conveyor length	94" or 140" (238.8 cm or 355.6 cm)	72" (182.9)	96" and 144" (243.8 cm and 365.8 cm)
Conveyor shift available	Yes	Yes	Yes
Conveyor shift distance	27" (68.6 cm)	27" (68.6 cm)	12" and 48" (30.5 cm and 121.9 cm)
Conveyor style	Flat	Flat	Flat or curved
Discharge direction	Right or left	Right or left	Right or left
Discharge height	43.5" or 45.5" (110.5 cm or 115.6 cm)	53.5" (135.9 cm)	48" and 56" (121.9 and 142.2 cm)

ATTACHMENTS	T555III	T558III	T655III
Trencher	Yes	Yes	Yes
Terrain Leveler SEM	No	Yes	No
Rockwheel	Yes	No	Yes
Bucket wheel	No	No	Yes

CAB	T555III	T558III	T655III
Cab	Yes	Yes	Yes
Control system	TEC® Plus system with SmartTEC	TEC® computer-aided control system	TEC Plus system with SmartTEC
Air conditioner/heater	Yes	Yes	Yes
Air suspension seat	No	No	No
AM/FM stereo with weather band	Yes	Optional	Yes
Elevating	No	Horizontal sliding	No
Pressurized/Filtered air	Yes	Yes	Yes
Rollover protective module or rollover protective structure (ROPM/ROPS)	No	Yes	No

HYDRAULIC SYSTEM	T555III	T558III	T655III
Oil tank capacity	80 gal (302.8 L)	80 gal (302.8 L)	85 gal (321.8 L)
Oil type	Vermeer HyPower 68 or Vermeer HyPower 100	Vermeer HyPower 68 or Vermeer HyPower 100	Vermeer HyPower 68 or Vermeer HyPower 100
Pressure setting	2500 psi (172.4 bar)	2500 psi (172.4 bar)	2500 psi (172.4 bar)
Pump flow at maximum rpm	27.2 gpm (103 L/min)	27.2 gpm (103 L/min)	25 gpm (94.6 L/min)
Pump type	Pressure- and flow-compensated (load-sensing)	Pressure- and flow-compensated (load-sensing)	Pressure- and flow-compensated (load-sensing)

T755III	T955III	T1055III	T1155III	T1255III
Yes	No	No	No	No
8.9 psi (61.4 kPa)	11.7 psi (80.7 kPa)	9.4 psi (64.8 kPa)	13 psi (89.6 kPa)	15.5 psi (106.9 kPa)
12.5 psi (86.2 kPa)	13.3 psi (91.7 kPa)	13.9 psi (95.8 kPa)	17.3 psi (119.3 kPa)	21.1 psi (145.5 kPa)
Yes	No	No	No	No
12°	0	0	NA	NA
Dual-path hydrostatic with planetary transmission	Dual-path hydrostatic with planetary transmission	Dual-path hydrostatic with planetary transmission	Dual-path hydrostatic with planetary transmission	Dual-path hydrostatic with planetary transmission
11.8' (3.6 m)	13.4' (4.1 m)	14.7' (4.5 m)	14.8' (4.5 m)	15.1' (4.6 m)
Single, double, triple and polyurethane grouser	Single, double or triple grouser	Single or double grouser	Single, double or triple grouser	Double grouser
1.7' or 2' (0.5 m or 0.6 m)	2' (0.6 m)	2' or 2.5' (0.6 m or 0.8 m)	2.2', 2.3' or 2.5' (0.6 m, 0.7 m or 0.8 m)	2.5' (0.8 m)
D5	D6	D7G	Caterpillar 350 excavator	Caterpillar 375 excavator
85.2 fpm (26 m/min)	68 fpm (20.7 m/min)	57.1/min (17.4 m/min)	50 fpm (15.2 m/min)	44.2 fpm (13.5 m/min)
170 fpm (51.8 m/min)	136 fpm (41.5 m/min)	114/min (34.7 m/min)	133 fpm (40.5 m/min)	118 fpm (36 m/min)
Spring-applied, hydraulic release, wet disc brake	Spring-applied, hydraulic release, wet disc brake	Spring-applied, hydraulic release, wet disc brake	Spring-applied, hydraulic release, wet disc brake	Spring-applied, hydraulic release, wet disc brake
Hydrostatic	Hydrostatic	Hydrostatic	Hydrostatic	Hydrostatic
24" (61 cm)	30" (76.2 cm)	30" (76.2 cm)	30" (76.2 cm)	36" (91.4 cm)
0-1118 fpm (0-340.8 m/min)	0-1070 fpm (0-326 m/min)	0-1070 fpm (0-326 m/min)	0-1070 fpm (0-326 m/min)	0-814 fpm (0-248 m/min)
Cleated or finger type	Cleat or finger type	Cleat or finger type	Cleated or finger type	Finger type
96" or 144" (243.8 cm or 365.8 cm)	108" or 168" (274.3 cm or 426.7 cm)	108" or 168" (274.3 cm or 426.7 cm)	168" or 228" (426.7 cm or 579.1 cm)	180" or 240" (457.2 cm or 609.6 cm)
Yes	Yes	Yes	Yes	Standard
14" and 66" (35.6 cm and 167.6 cm)	5" or 65" (12.7 cm or 165.1 cm)	5" and 65" (12.7 and 165.1 cm)	65" and 125" (165.1 cm and 317.5 cm)	60" or 125" (152.4 cm or 317.5 cm)
Curved	Curved	Curved	Curved	Curved
Right or left	Right or left	Right or left	Right or left	Right or left
55" and 68" (139.7 cm and 172.7 cm)	62"-76" (157.5 cm-193 cm)	64"-78" (162.6 cm-198.1 cm)	72"-86" (188.2 cm-218.4 cm)	74"-103" (188 cm-261.6 cm)
Yes	Yes	Yes	Yes	Yes
No	No	Yes	Yes	Yes
No	No	No	No	No
No	No	No	No	No
Yes	Yes	Yes	Yes	Yes
TEC Plus system with SmartTEC	TEC Plus system with SmartTEC	TEC Plus system with SmartTEC	TEC Plus system with SmartTEC	TEC Plus system
Yes	Yes	Yes	Yes	Yes
No	No	No	Yes	Yes
Yes	Yes	Yes	Yes	Yes
Yes	Yes	Yes	Yes	Yes
Yes	Yes	Yes	Yes	Yes
Yes	Yes	Yes	Yes	Yes
114 gal (431.5 L)	152 gal (575.4 L)	152 gal (575.4 L)	152 gal (575.4 L)	210 gal (794.9 L)
Vermeer HyPower 68 or Vermeer HyPower 100	Vermeer HyPower 68 or Vermeer HyPower 100	Vermeer HyPower 68 or Vermeer HyPower 100	Vermeer HyPower 68 or Vermeer HyPower 100	Vermeer HyPower 68 or Vermeer HyPower 100
2500 psi (172.4 bar)	2500 psi (172.4 bar)	2500 psi (172.4 bar)	2500 psi (172.4 bar)	2500 psi (172.4 bar)
25.1 gpm (95 L/min)	27.9 gpm (105.6 L/min)	27.9 gpm (105.6 L/min)	27.9 gpm (105.6 L/min)	27.9 gpm (105.6 L/min)
Pressure- and flow-compensated (load-sensing)	Pressure- and flow-compensated (load-sensing)	Pressure- and flow-compensated (load-sensing)	Pressure- and flow-compensated (load-sensing)	Pressure- and flow-compensated (load-sensing)

Vermeer Corporation
1210 Vermeer Road East
Pella, Iowa 50219
800-370-3659 • Vermeer.com

Calculator costs and operating expenses are based on estimates considering customer-provided data and assuming proper use, maintenance and operation. Actual operating costs and return on investment will vary based on conditions, price fluctuations, polymer use and other external factors. This is a tool for estimating only and is not a guarantee of actual results.

Select photos acquired using drone, unattended camera and/or a telephoto lens.

Vermeer Corporation reserves the right to make changes in engineering, design and specifications; add improvements; or discontinue manufacturing at any time without notice or obligation.

Equipment shown is for illustrative purposes only and may display optional accessories or components specific to their global region. Please contact your local Vermeer dealer for more information on machine specifications.

Specifications, descriptions and illustrative material herein are as accurate as known at time of publication, but are subject to change without notice. Availability of some models and equipment builds varies according to the country in which the equipment is used.

Vermeer, the Vermeer logo, Equipped to Do More, Commander, TEC and Terrain Leveler are trademarks of Vermeer Manufacturing Company in the U.S. and/or other countries. Caterpillar is a trademark of Caterpillar Inc. John Deere is a trademark of Deere & Company.

© 2019 Vermeer Corporation. All Rights Reserved.

LF00685 08/19 PRINTER (xx) / PN#00000000



PIPELINE TRENCHERS