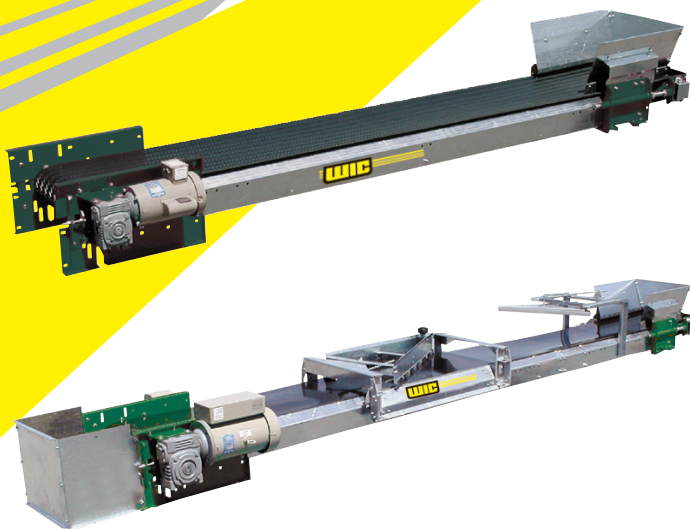




**Serving the agricultural producers since 1970!**

# BELT SYSTEM CONVEYORS



## 18", 24" or 36" Belt System Conveyor

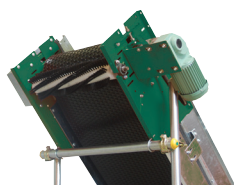
- Maintenance free silent mechanism.
- Conical drive roller covered with a strip of non-slip material.
- Smooth or textured belt treated for cold weather.

## 18" Feeder Conveyor

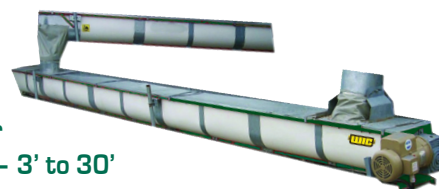
- Standard or low profile.
- Right, left or both sides feeding.
- With one or many groups.
- Custom control pannel.

### Options :

- Belt cleaning rotating brush.
- Smooth belt scrapper.



## 12" Auger Conveyor - 3' to 30'



|                        | 18" MODEL (46 CM)   |                          | 24" MODEL (61 CM)  |                         | 36" MODEL (91 CM)    |
|------------------------|---|--------------------------|--|-------------------------|----------------------|
| Gearbox                | 70  | 80                       | 70   | 80                      | 80                   |
| Maximum Length         | 0 to 100'<br>0 to 30,5 m  | Over 100'<br>Over 30,5 m | 0 to 75'<br>0 to 22,9 m  | Over 75'<br>Over 22,9 m | 25' max<br>7,6 m max |
| Basic roller (conical) | 4½" [11,4 cm]   | 4½" [11,4 cm]            | 4½" [11,4 cm]  | 4½" [11,4 cm]           | 4½" [11,4 cm]        |
| Roller                 | 5½" [14 cm]   | 6⅝" [16,5 cm]            | 5½" [14 cm]  | 6⅝" [14 cm]             | 6⅝" [16,5 cm]        |
| Slope                  | Up to 100 for smooth belt [2" - 5,1 cm] per feet<br>Up to 300 for textured belt [6" - 15,2 cm] per feet |                          |  |                         |                      |
| Range                  | 10' - 3,05 m between support  |                          |  |                         |                      |
| Section                | 16 gauge galvanized steel<br>2 ½", 4", 5", 8" et 10"<br>6, 10, 13, 20, 25 cm                            |                          | 18 gauge galvanized steel<br>2 ½", 4", 5", 8" et 10"<br>6, 10, 13, 20, 25 cm |                         |                      |
| Lid                    | 18 gauge galvanized steel - 5' et 10' - 1,5 m et 3,05 m   |                          |  |                         |                      |

# CHAIN CONVEYORS



## 12" Chain Conveyor

Conveyor designed for various types of installation answering your needs; because of the closed sections,

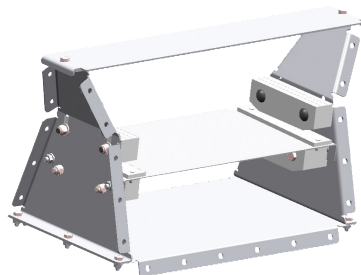
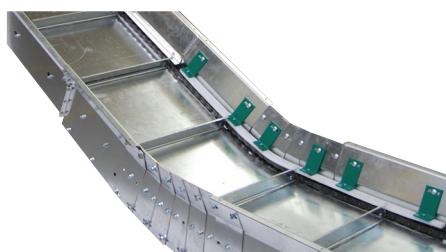
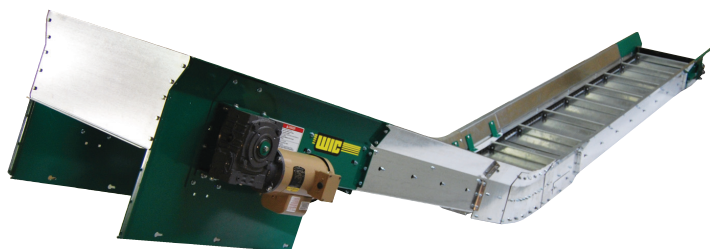
it is ideal for inside or outside use even in winter condition.

- Drive unit & base (6')
- Gearbox CC70 ou CC80 (20-1 ou 30-1).
- 662HD chain with rubber pallets.
- 2', 4' et 8' section available.

## 18" & 24" Double Chain Conveyor

Conveyor designed to install at the exit of a silo or a vertical mixer. Closed sections are ideal for external usage even in winter condition.

- Drive unit & base (6')
- Gearbox CC70 ou CC80 (20-1 ou 30-1).
- 662HD chain with rubber pallets.
- 2', 4' et 8' section available.



## Options :

- Upward adjustable articulated joint (5") for 12", 18" & 24" conveyor.
- Upward adjustable articulated joint (30") for 12", 18" & 24" conveyor.
- Upward 350 fixed joint (8") for 18" & 24" conveyor.
- Loading & unloading hopper.
- Lid.

## WIC Warranty

All WIC products have a one-year warranty (tires and labor not included) against all manufacturing defects. WIC reserves the right to modify manufacturing and specifications of its products without notice or incurring the obligation to effect those changes on products already sold. This warranty is valid under normal use for which the machine was made.

## WIC Liability

WIC, its dealers and/or agents cannot guarantee individual results from the use of the WIC equipments due to factor beyond our control. Even if the WIC equipments are very safe when operation procedures are followed, accidents which may occasionally result from equipment failure are not liable to WIC. The security use of this equipment does not eliminate all the risks connected to its use.



Phone : 819.398.7575  
Toll free : 1.877.390.7575  
Fax : 819.398.7557  
service@interwic.com  
www.interwic.com

784 Principale, C.P. 356, Wickham Qc J0C 1S0

Your dealer