

SBX SERIES



PERHAPS YOU'RE GETTING A LITTLE TOO BIG FOR YOUR BRITCHES.

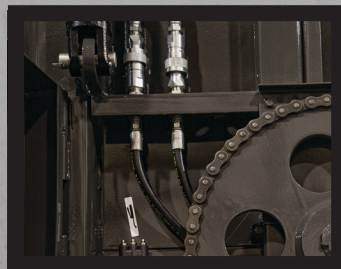
Some folks like a wider load, and we're more than happy to accommodate. Our SBX spreader series gives you an extra foot of width, making it easier and faster to fill—and since it's an Artex, nothing unloads faster or easier, either. That's pretty big news for people with work to do.

SBX600

LENGTH 20'
WIDTH 6'6"
WALL HEIGHT 4'
CAPACITY 660 CU. FT.



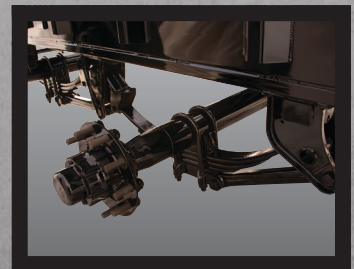
**TWIN VERTICAL
BEATERS**



**REMOTE
GREASE BANKS**



CHAIN FLOOR



SPRING SUSPENSION

STANDARD FEATURES

10
GAUGE
STEEL WALLS

180
DEGREE
SWIVEL ARM FOR
HYDRAULIC LINES

**INSET
GUILLOTINE
GATE**

**ARTICULATING
BULL PULL
HITCH**

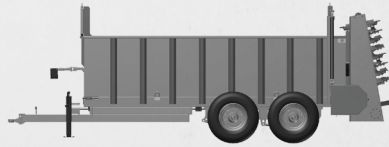
**SUPER
SLIDE
POLY FLOOR**

- 3/8" THICK TUBE CONSTRUCTION ON REACH
- 5/8" THICK FLIGHTING ON VERTICAL BEATER
- REMOTE GREASE BANKS
- REMOVABLE REAR CHAIN DOORS
- CHOICE OF FLOOR CHAIN: 88C OR WR78
- 7 TOOTH REAR CHAIN DRIVE SPROCKET
- 1/2" SUPER SLIDE POLY FLOOR
- OPTIONAL TIRE SIZES AVAILABLE
425/65-22.5, 550/45-22.5, 600/50-22.5
- DIGI STAR SCALE SYSTEM

SB TRACTOR PULLED SPREADERS

SBX500

LENGTH 16'
WIDTH 6'6"
WALL HEIGHT 4'
CAPACITY 528 CU. FT.



SBX700 TANDEM

LENGTH 22'
WIDTH 6'6"
WALL HEIGHT 4'
CAPACITY 726 CU. FT.



SBX550

LENGTH 18'
WIDTH 6'6"
WALL HEIGHT 4'
CAPACITY 594 CU. FT.



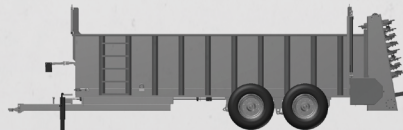
SBX700 TRIPLE

LENGTH 22'
WIDTH 6'6"
WALL HEIGHT 4'
CAPACITY 726 CU. FT.



SBX600

LENGTH 20'
WIDTH 6'6"
WALL HEIGHT 4'
CAPACITY 660 CU. FT.

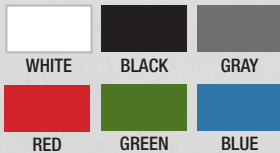


SBX800 TANDEM

LENGTH 26'
WIDTH 6'6"
HEIGHT 4'
CAPACITY 858 CU. FT.



COLOR OPTIONS



SBX800 TRIPLE

LENGTH 26'
WIDTH 6'6"
HEIGHT 4'
CAPACITY 858 CU. FT.

