



## BENEFITS

The **Seamless Summit Nursery Slat** provides exceptionally easy cleaning, elevated comfort, and excellent durability. This is another innovative BSM brand product that helps you produce healthier pigs more economically.



## FEATURES

- Unique "Seamless joining" system for easier cleaning
- V-shaped ribs for early disease detection
- Available in grey or black
- Light colour for early disease detection and makes room very bright.
- Designed for pigs up to 100 lbs.
- Manufactured of 100% virgin material- increased strength and durability.
- Available in recycled material - reduced cost
- Cost savings, as less rails are required.
- Large 24" x 48" slat size for reduced installation time



## COLOR OPTIONS

### GREY

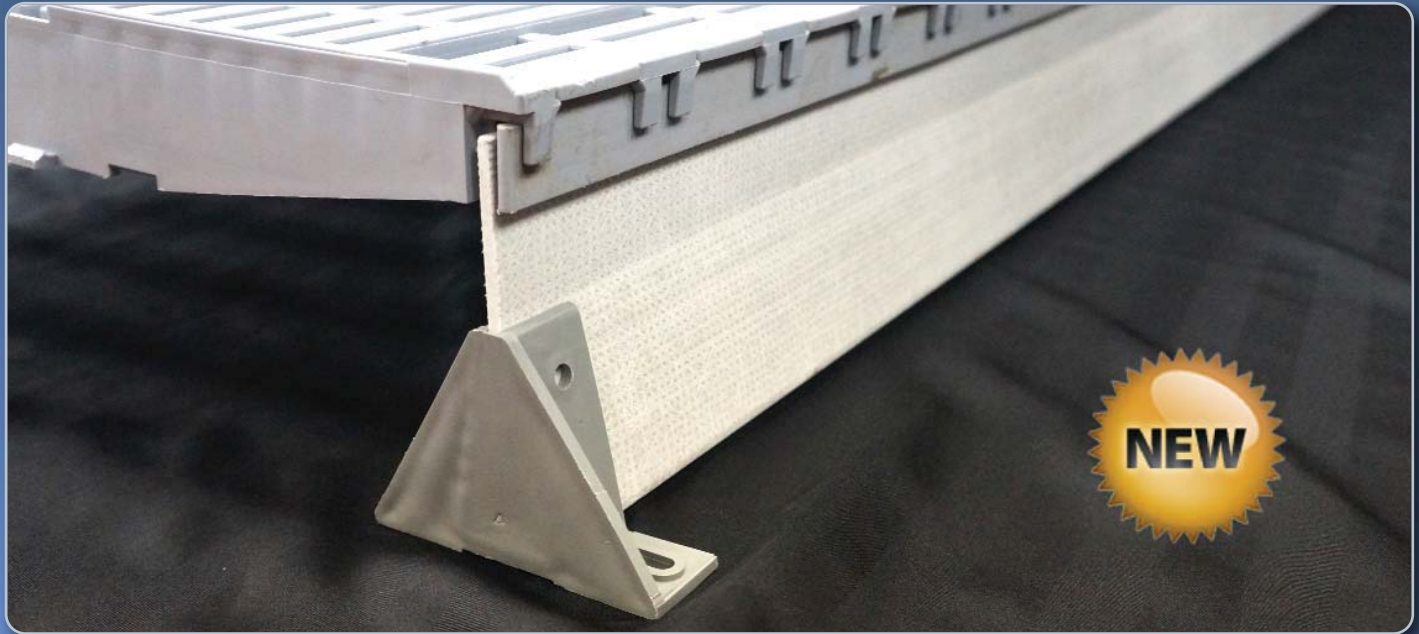


### BLACK



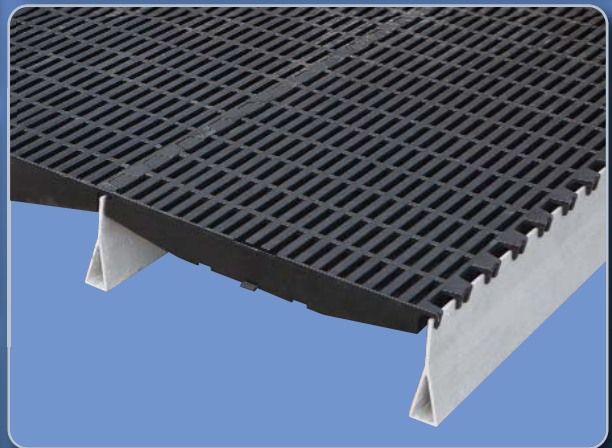
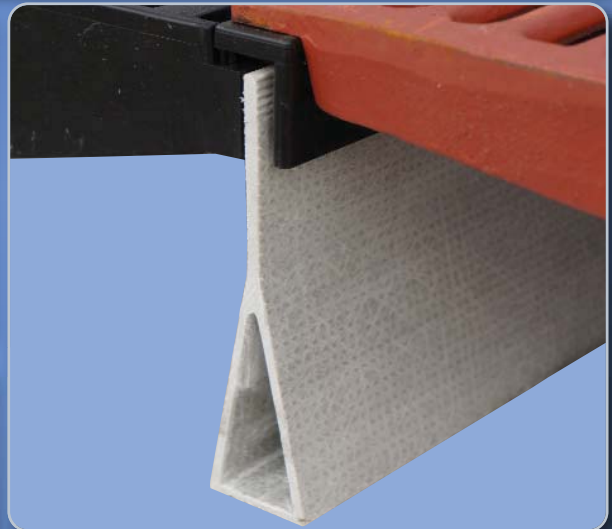
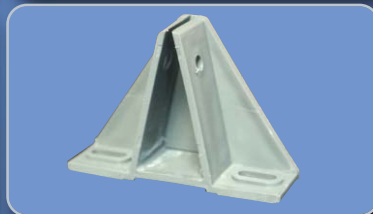
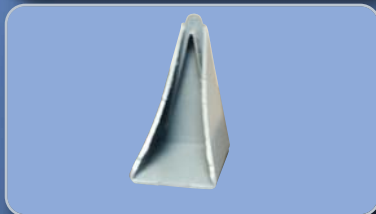
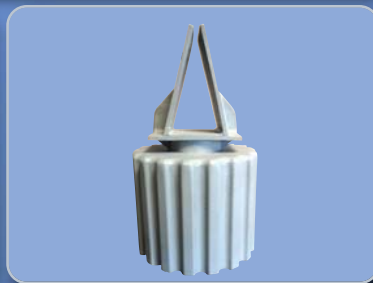
## WARRANTY

- 5 year pro-rated warranty.
- **Note: Flooring guidelines on FLOORING-23 must be followed to ensure warranty.**



## FEATURES

- Heavy duty “adjustable” post support system
- Triangular shaped, heavy duty plastic end bracket enhances stability and protects the beam from the concrete
- Corrosion resistant fiberglass rail provides an excellent alternative to stainless steel.
- Rail is 5 5/16” high for added strength
- Light weight and strong
- Easy to install
- 3/16” rail can be used with all Canarm flooring



## ACCESSORIES

- Available accessories: Post, End Caps

**CANARM LTD. - Corporate Office**  
2157 Parkedale Ave., Brockville, ON  
Canada K6V 5V6  
Tel: (613) 342-5424 Fax: 1-800-263-4598

**CANARM LTD. - USA Warehouse**  
808 Commerce Park Drive  
Ogdensburg, New York, USA 13669  
Tel: 1-800-267-4427 Fax: 1-800-263-4598

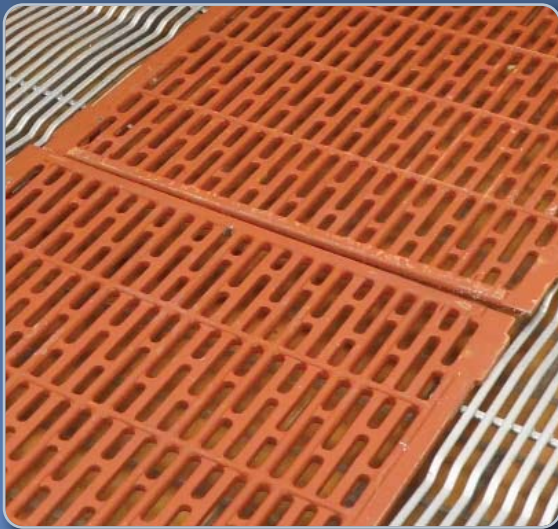
**Arthur Manufacturing Facility**  
#7686 Concession 16, RR 4 Arthur, ON  
Canada NOG 1A0  
Tel: (519) 848-3910 Fax: (519) 848-3948

Web Site: [www.canarm.com](http://www.canarm.com)

E-Mail: [agsales@canarm.ca](mailto:agsales@canarm.ca)

Subject to Change without notice.

Printed in Canada



**SCHOLAU CAST SHOWN**  
CHINA CAST ALSO AVAILABLE. CALL FOR DETAILS.

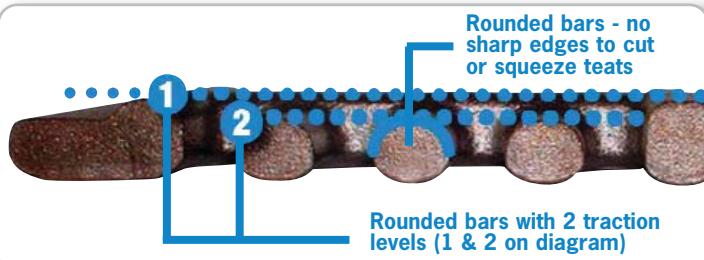


## FEATURES

- Adaptable - can be combined with all of Canarm Ag Systems' flooring applications
- 2 traction levels for extreme horizontal foothold on wet or fatty surfaces, providing excellent traction for sows with weak legs.
- No sharp fins and edges
- Manufactured with the worldwide unique "open mould technology"
- Rounded bars prevent squeezing and cutting of teats.
- Smooth surface and high/low textured for sow traction.
- Keeps sow cool in warm farrowing room.
- Non-slip profile reduces injuries.
- Increased average wean weights.
- Significantly decreases pre-wean death rates.
- Easily combines with Nursery Toplock for superb farrowing floors.



## SUPERIOR COMFORT



## SAFE INTERLOCKING TABS

STAINLESS STEEL TABS LOCK AT THE BEAM



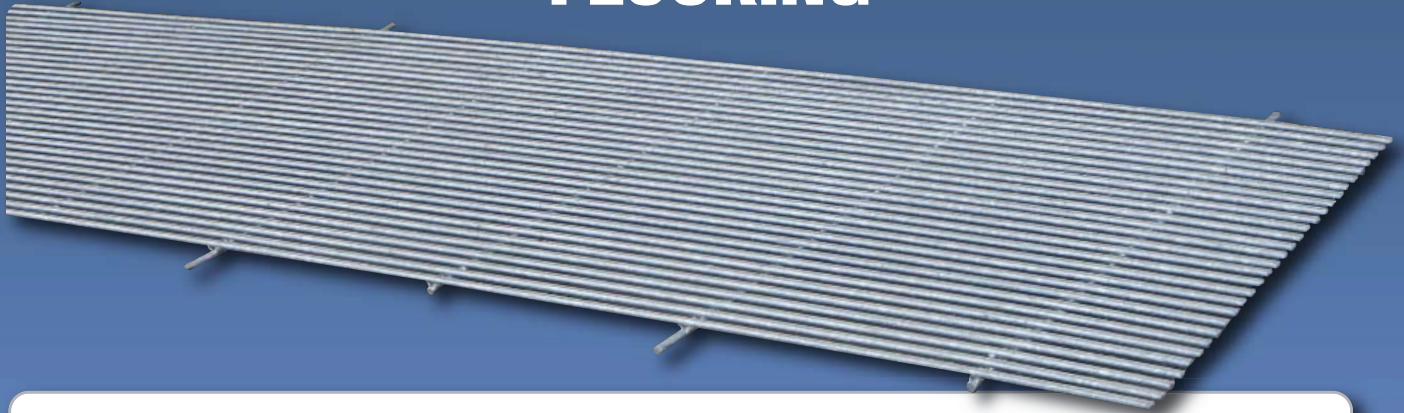
CANARM LTD. - Corporate Office  
2157 Parkedale Ave., Brockville, ON  
Canada K6V 5V6  
Tel: (613) 342-5424 Fax: 1-800-263-4598

Web Site: [www.canarm.com](http://www.canarm.com)

CANARM LTD. - USA Warehouse  
808 Commerce Park Drive  
Ogdensburg, New York, USA 13669  
Tel: 1-800-267-4427 Fax: 1-800-263-4598

E-Mail: [agsales@canarm.ca](mailto:agsales@canarm.ca)

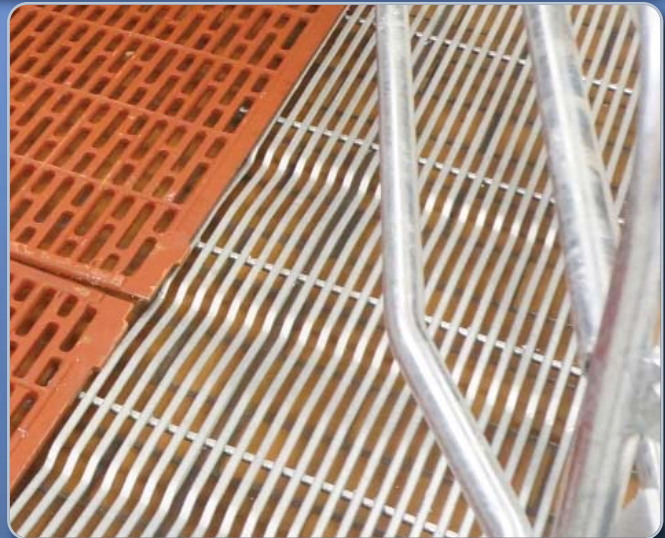
Arthur Manufacturing Facility  
#7686 Concession 16, RR 4 Arthur, ON  
Canada NOG 1A0  
Tel: (519) 848-3910 Fax: (519) 848-3948



**A strong, hygienic nursery flooring option with superior footing for sows and piglets.**

## FEATURES

- Durable for years of reliable service.
- Provides secure traction and footing.
- Easy to clean.
- Simple to install.
- Rugged 2' x 10' rail construction to give it maximum strength in a steel floor.
- 6.9 lbs/square foot - which is the heaviest in the industry and provides extreme longevity and durability.
- Self supporting.



## SUPERIOR TRACTION

Some models feature Sure Foot Technology. Sure foot is a unique indentation made in the v-bar which prevents the sow from slipping while getting up or lying down.



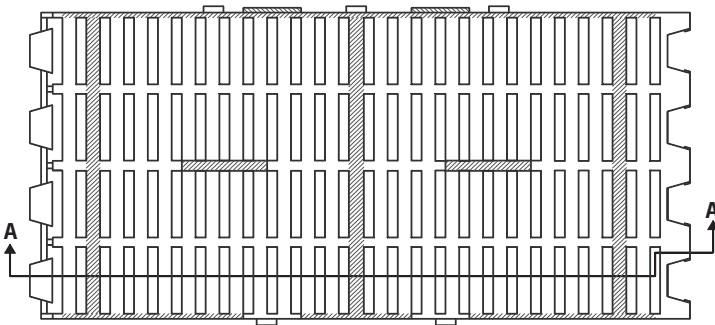
## WARRANTY

- 5 year prorated warranty.

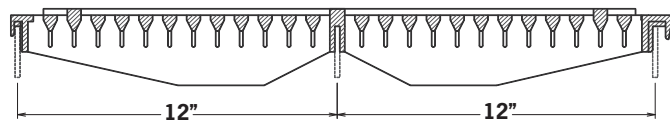
## PLASTIC FLOORING OPTIONS

### HOG FLOORING

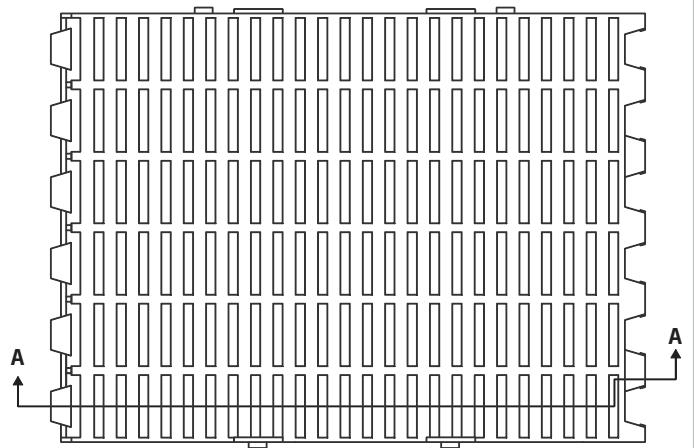
**2099810**  
SOW FARROWING 24" OC X 12" LG.



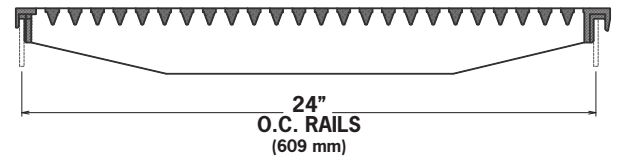
SECTION AA



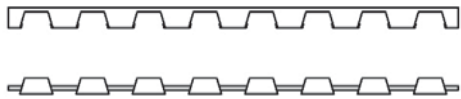
**2099750**  
PL. CREEP SLAT 24" OC X 18" LG.



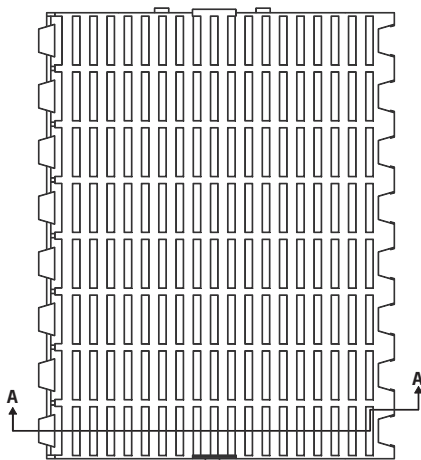
SECTION AA



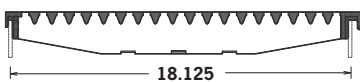
**2099600-E**  
PLASTIC END CAP 24" LG. (L + R)



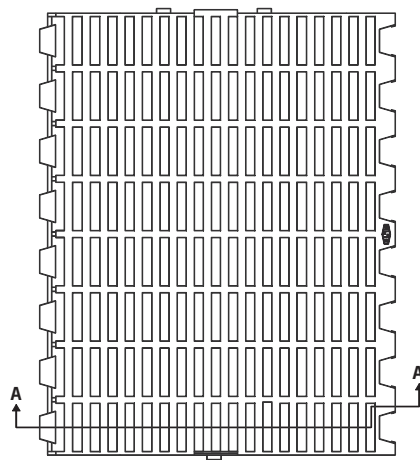
**2099650**  
PL. CREEP SLAT 18" OC X 24" LG.



SECTION AA



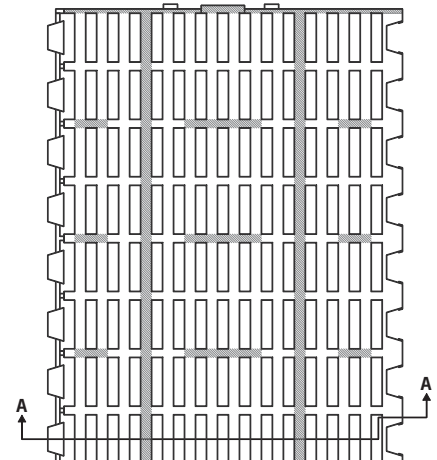
**2099600**  
PL. NURSERY SLAT 18" OC X 24" LG.



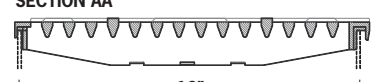
SECTION AA

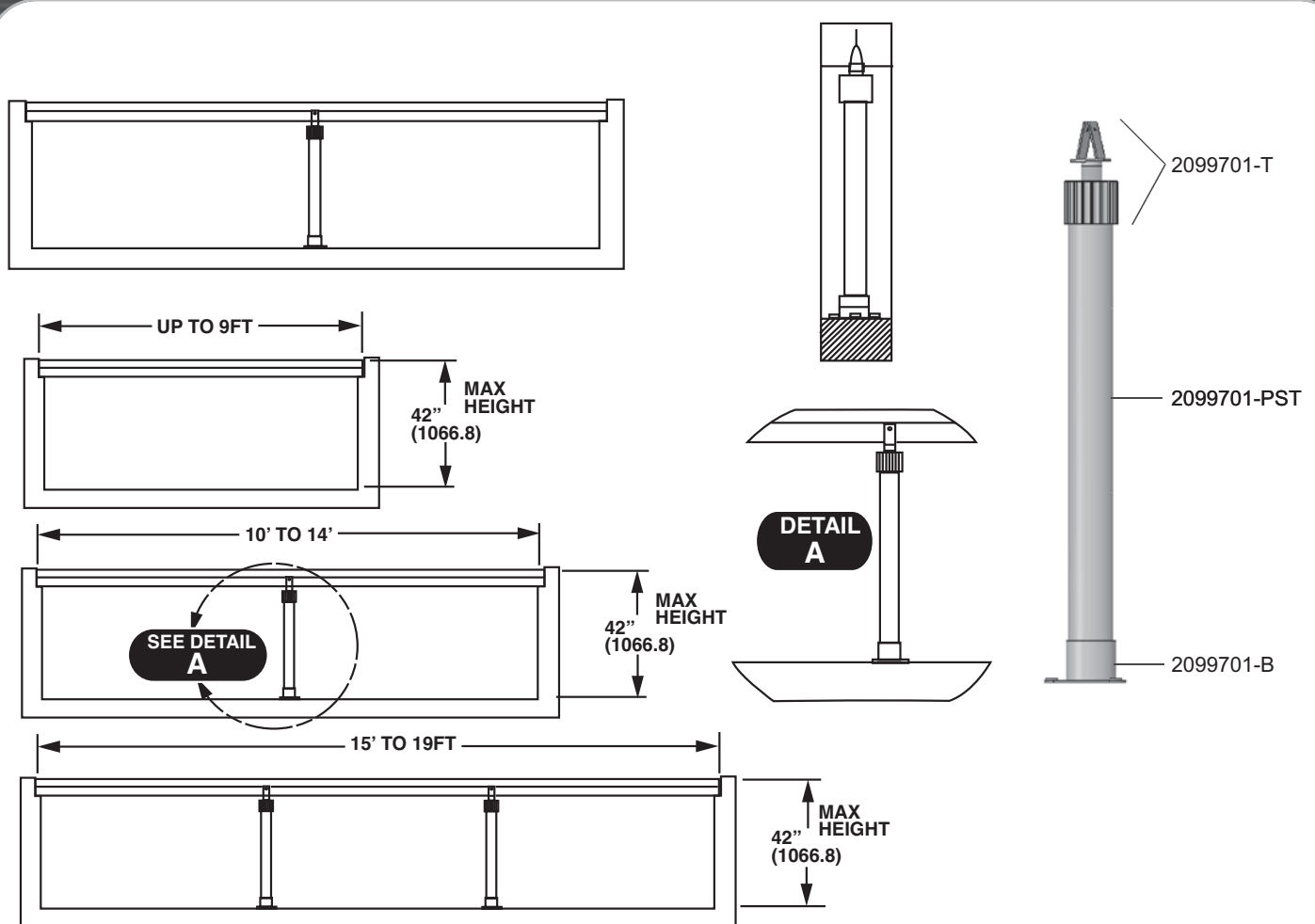


**2090675**  
PL. FINISHER 18" OC X 24" LG.



SECTION AA





2099701-B



2099701-T



2099700-EC



2099700-EP



## FIBERGLASS RAILS

PART#	DESCRIPTION	WEIGHT (lbs)
2099700-19	19 FT. FIBERGLASS RAIL 3/16" X 5 5/16"	15.31
2099700-EC	PLASTIC END CAP ONLY FOR 3/16" X 5 5/16" FIBERGLASS RAIL	0.04
2099700-EP	HEAVY DUTY PLASTIC END BRACKET ONLY FOR 3/16" X 5 5/16" FIBERGLASS RAIL	0.12
2099701-B	POST BOTTOM ONLY FOR 3/16" X 5 5/16" FIBERGLASS RAIL	0.56
2099701-PST	19 FT. POST ONLY FOR 3/16" X 5 5/16" FIBERGLASS RAIL	24.06
2099701-T	POST TOP ONLY FOR 3/16" X 5 5/16" FIBERGLASS RAIL	0.81

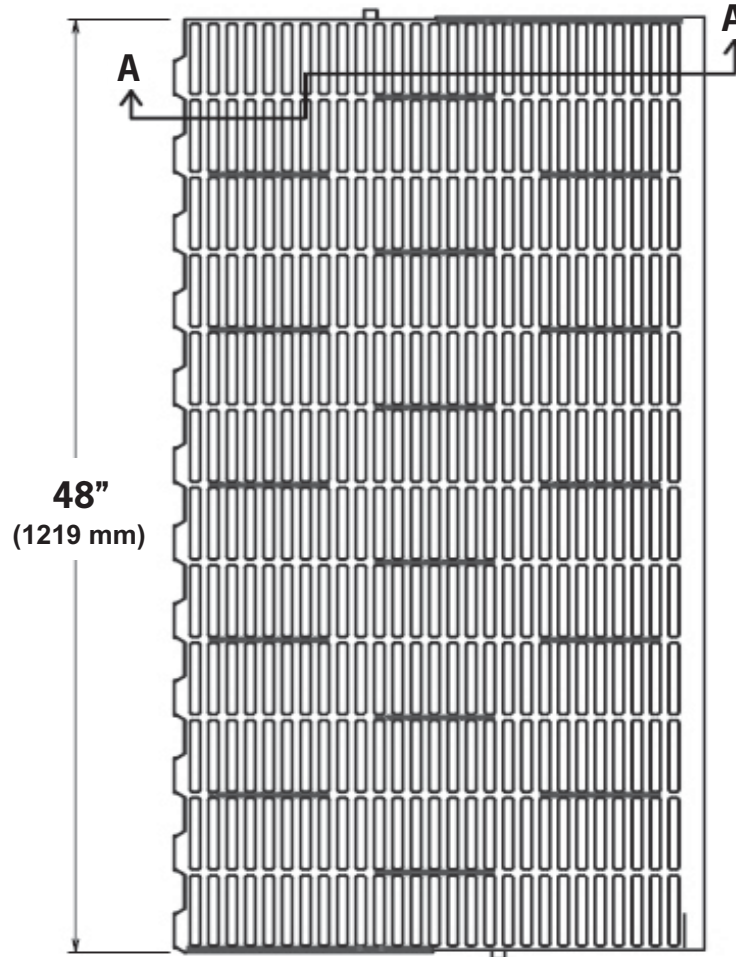
## SEAMLESS SUMMIT NURSERY FLOORING

### 2099350

SUMMIT NURSERY SLAT 24" OC X 48" LG.  
GREY VIRGIN MATERIAL

### 2099350-B

SUMMIT NURSERY SLAT 24" (615 mm) OC X 48" LG. (1219 mm)  
BLACK



### SECTION AA

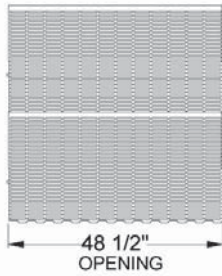


### O.C. RAILS

- Size installed (24 3/16" o.c.)(615 mm) x (48" lg.)(1219 mm)
- % Open (324 slots @ .470" x 3.70") (12 mm x 94 mm) therefore 50% open
- Max. 100 lb. (45 kg) grower pigs
- Top of support to top of floor = 11/16" (17 mm) (Overall height = 3 3/8") (86 mm)
- Therefore minimum support height = 3" (76 mm)

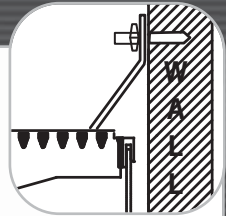
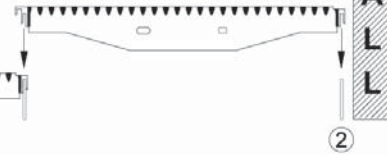
**WARRANTY: 5 YEAR PRO-RATED**

## ASSEMBLY - 4', 8', 12', 16', 20', 24', etc.

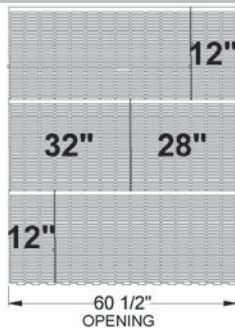


1. Start with seamless joint
2. If room is perfect width, end with small end and cover with SS cove

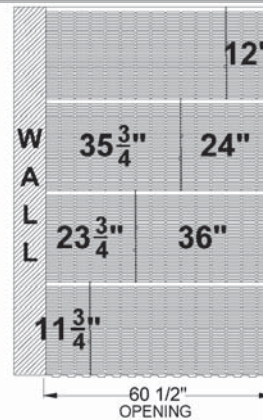
**MOST OF INSTALLATIONS WILL END UP WITH A CUT SLAT (NOTCH FOR RAIL)**



## ASSEMBLY - 5', 9', 13', 17', 21', 25', etc.

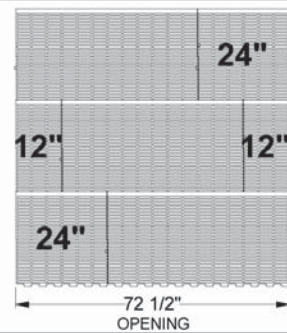


- Must start & stop with full rib
- 1/4 slat waste over 3 rows

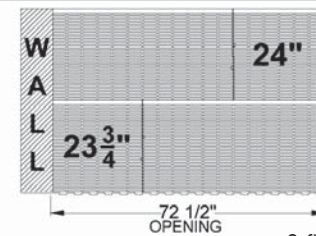


- 0 flooring waste
- Cut slats must be at wall with SS cove

## ASSEMBLY - 6', 10', 14', 18', 22', 26', etc.

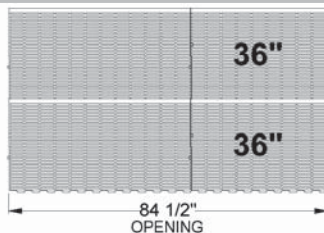


- Must start & stop with full rib
- 1/2 slat waste over 3 rows

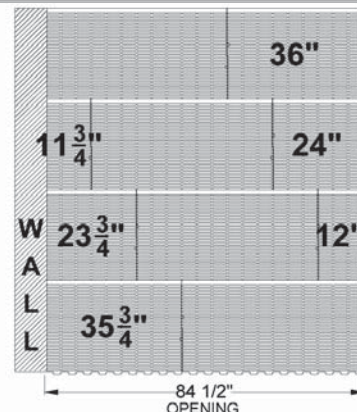


- 0 flooring waste
- Cut slats must be at wall with SS cove

## ASSEMBLY - 7', 11', 15', 19', 23', 27', etc.



- Must start & stop with full rib
- 1/4 slat waste per row



- 0 flooring waste
- Cut slats must be at wall with SS cove

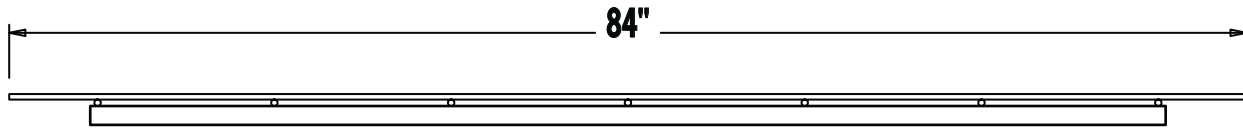




**ALL V-BAR PRODUCTS ARE SPECIAL ORDER.  
ONCE CONFIRMED, THE ORDER CANNOT BE CANCELLED.**

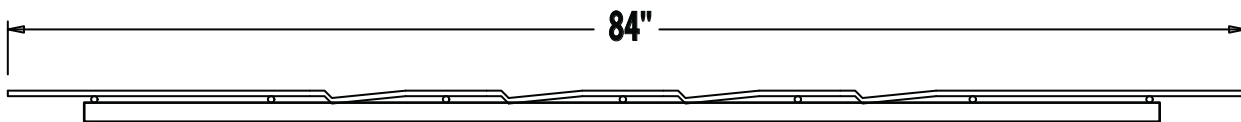
## SUPPORTED V-BAR NURSERY

2132460  
2132472  
2132484 (SHOWN)  
2132496  
21324108  
21324120



## SUPPORTED V-BAR + SUREFOOT SUPPORTED V-BAR, 2' X 7', SUREFOOT + SPACERS

2142484 (SHOWN)  
2142490  
2142496  
21424108  
21424120



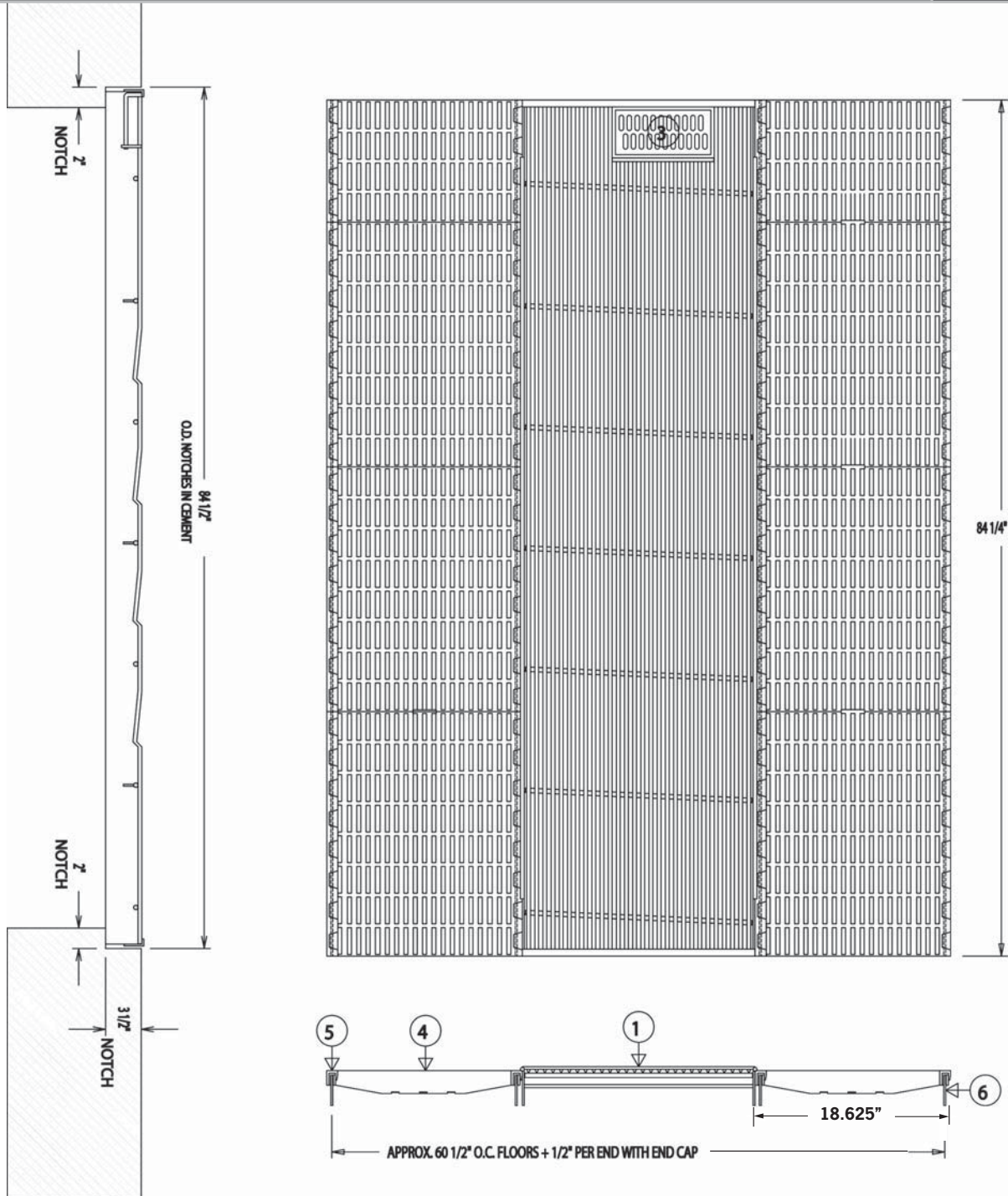
# V-BAR TOPLOCK/ 84" ON CENTRE FLOOR

**2090V84-C** - GALV. RAILS + V-BAR + TOPLOCK/60" X 84"/O.C. CREEP

**2090V90-C** - GALV. RAILS + V-BAR + TOPLOCK/60" X 90"/O.C. CREEP

**S2090V84-C** - SS RAILS + V-BAR + TOPLOCK/60" X 84"/O.C. CREEP

**S2090V90-C** - SS RAILS + V-BAR + TOPLOCK/60" X 90"/O.C. CREEP



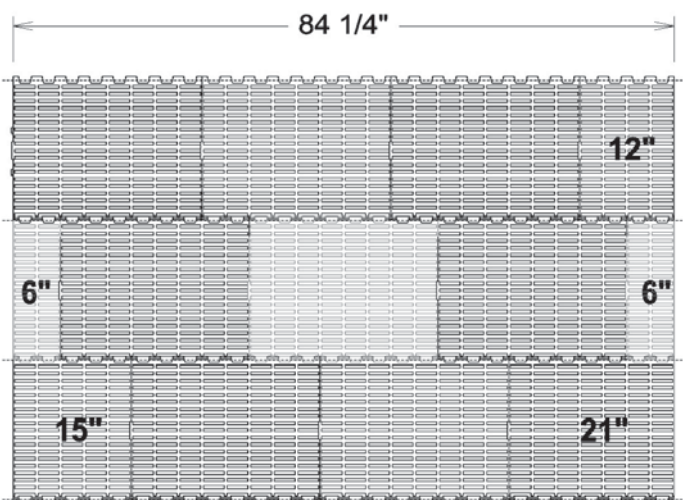
## ASSEMBLY

### 84" FLOOR

#### CUT SLATS AS SHOWN FOR MIN. WASTAGE

\* Leave full thickness of rib when cutting slats to fit\*

- Correct amount of slats included in each 5 x 7 floor

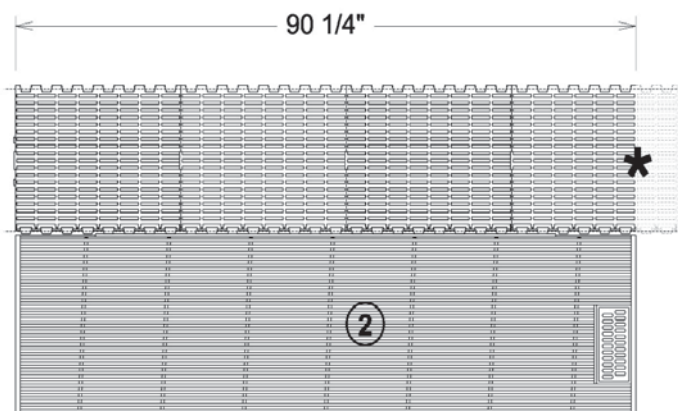


### 90" FLOOR

#### CUT SLATS AS SHOWN FOR MIN. WASTAGE

\* Leave full thickness of rib when cutting slats to fit\*

- Cut approximately 6" off last slat in each row
- This 6" is waste and is not reused



ILLUS.	DESCRIPTION	PART #
1	V-BAR SOW SECTION 23" X 84"	2090784
2	V-BAR SOW SECTION 23" X 90"	2090790
3	V-BAR CLEANOUT + HDW.	2099786
4	PLASTIC NURSERY FLOOR 18" X 24"	2099650
5	PLASTIC ENDCAPS 24" LG. (L + R)	2099600-E
6	GALV. 3/16" RAIL 3" X 84"	2099627
N/S	GALV. 3/16" RAIL 3" X 90"	2099627.5
N/S	PKG. OF 4 T-BOLTS (BLOCK & BOLT)	2099220

## ASSEMBLY INSTRUCTIONS

- 1) Start by snapping plastic slats together to make a 1 pc. unit. (18" wide x 84" or 90" lg.).
- 2) Install small endcaps to first row of flooring. Insert the first rail in this groove. The second rail can then be inserted in the leading tabs of the first complete row of slats. Snap large endcaps over leading tabs to hold rail in place.
- 3) Place v-bar sow section beside first complete row of slats.
- 4) Start over at step #2 and continue installing slats and v-bar until entire length of pit is covered.

**\*CLEAN OUT PC. IN V-BAR SOW SECTION MUST BE INSTALLED TO REAR OF CRATE\***

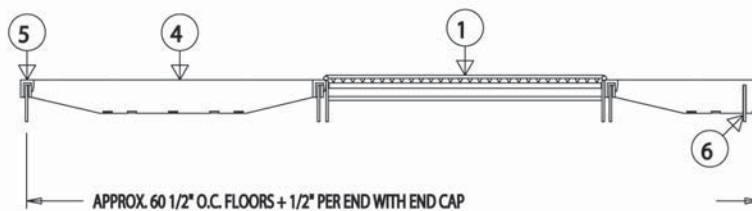
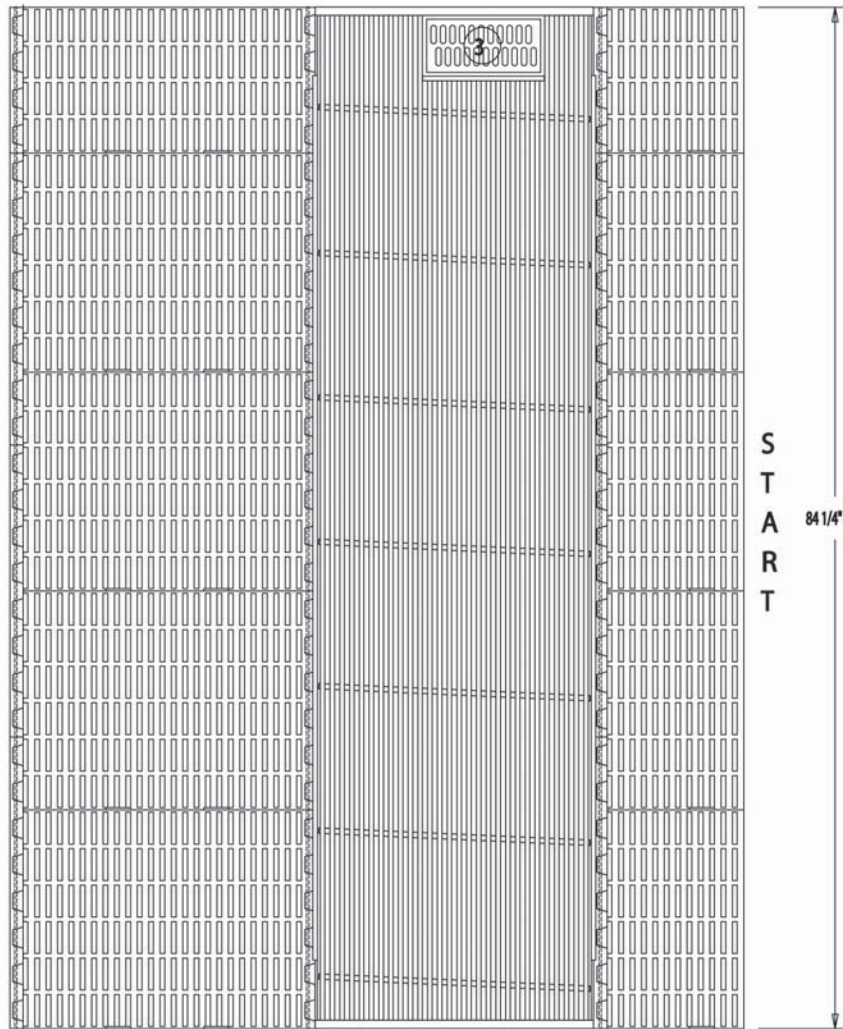
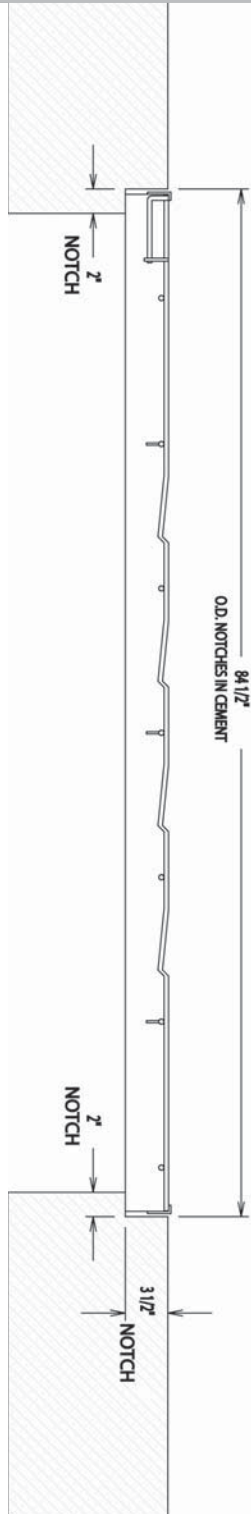
# V-BAR TOPLOCK/ 84" ON OFFSET FLOOR

**2090V84-F** - GALV. RAILS + V-BAR + TOPLOCK/60" X 84"/OFFSET CREEP

**2090V90-F** - GALV. RAILS + V-BAR + TOPLOCK/60" X 90"/OFFSET CREEP

**S2090V84-F** - SS RAILS + V-BAR + TOPLOCK/60" X 84"/OFFSET CREEP

**S2090V90-F** - SS RAILS + V-BAR + TOPLOCK/60" X 90"/OFFSET CREEP

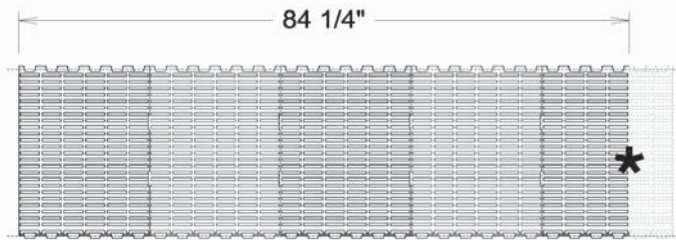


## ASSEMBLY

### 84" FLOOR

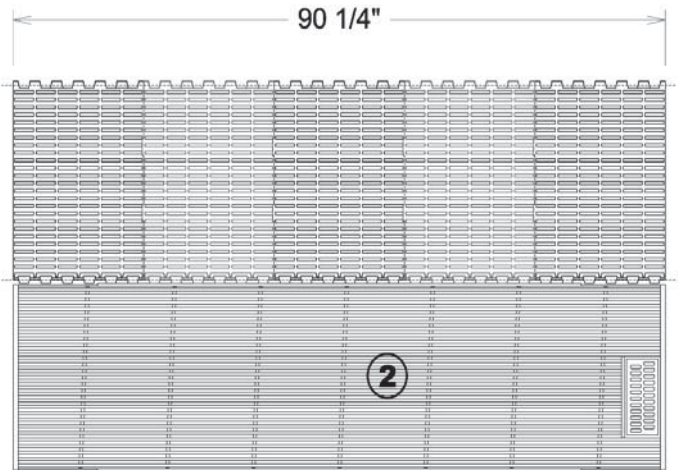
#### CUT SLATS AS SHOWN FOR MIN. WASTAGE

- \* Leave full thickness of rib when cutting slats to fit\*
- Cut approximately 6" off last slat in each row
- This 6" is waste and is not reused



### 90" FLOOR

#### FITS 90" FLOOR PERFECTLY



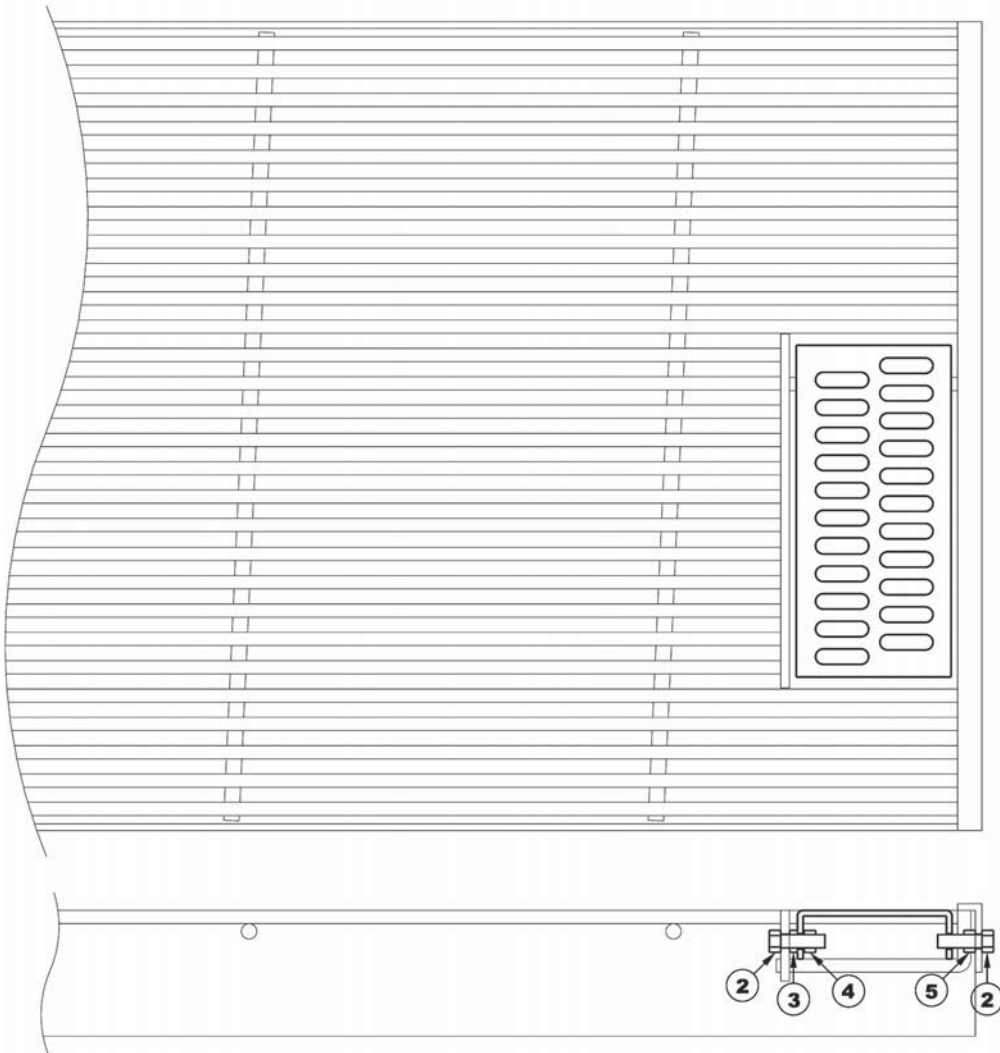
ILLUS.	DESCRIPTION	PART #
1	V-BAR SOW SECTION 23" X 84"	2090784
2	V-BAR SOW SECTION 23" X 90"	2090790
3	V-BAR CLEANOUT + HDW.	2099786
4	PLASTIC NURSERY FLOOR 24" X 18"	2099750
5	PLASTIC ENDCAPS 24" LG. (L + R)	2099600-E
6	GALV. 3/16" RAIL 3" X 84"	2099627
N/S	GALV. 3/16" RAIL 3" X 90"	2099627.5
N/S	PKG. OF 4 T-BOLTS (BLOCK & BOLT)	2099220

## ASSEMBLY INSTRUCTIONS

- 1) Start by snapping plastic slats together to make a 1 pc. unit. (24" wide x 84" or 90" lg.).
- 2) Cut preassembled floor in half to make 2 pcs. 12" x 84". Groove cut end for rail, APPROXIMATE. 1" from edge of slat.
- 3) Insert first rail in cut groove.
- 4) A second rail can then be inserted in the leading tabs of first row of slats. Snap large endcaps over leading tabs to hold rail in place.
- 5) Place v-bar sow section beside first complete row of slats.
- 6) Install endcaps to a row of flooring. Insert rail in this groove. Start over at step 4 and 6) continue installing slats & v-bar until entire pit length is covered.
- 7) If you have an even # of crates you will end up using leftover 12" x 84" cut piece.  
If you have an odd # of crates you will end up with a 24" x 84" floor.  
Use left over 12" x 84" pc. for completing next pit length.

**\*CLEAN OUT PC. IN V-BAR SOW SECTION MUST BE INSTALLED TO REAR OF CRATE\***

## ASSEMBLY



ILLUS.	DESCRIPTION	PART #
1	V-BAR CLEAN OUT	2099786
2	3/8" X 1 1/4" SS HEX BOLT	BOL3/8-1 1/4HSS
3	3/8" SS JAM NUT	NUT3/8JSS
4	3/8" LOCK NUT	NUT3/8LSS
5	3/8" HEX NUT	NUT3/8SS

## ASSEMBLY INSTRUCTIONS

- 1) Set clean out piece in sow section.
- 2) Insert 3/8" x 1 1/4" hex bolts from each side. Tighten jam nut(3) on flat bar side & regular nut(5) on angle side.
- 3) Install 3/8" lock nut(4) on flat bar side only. Tighten so that clean out swings freely.

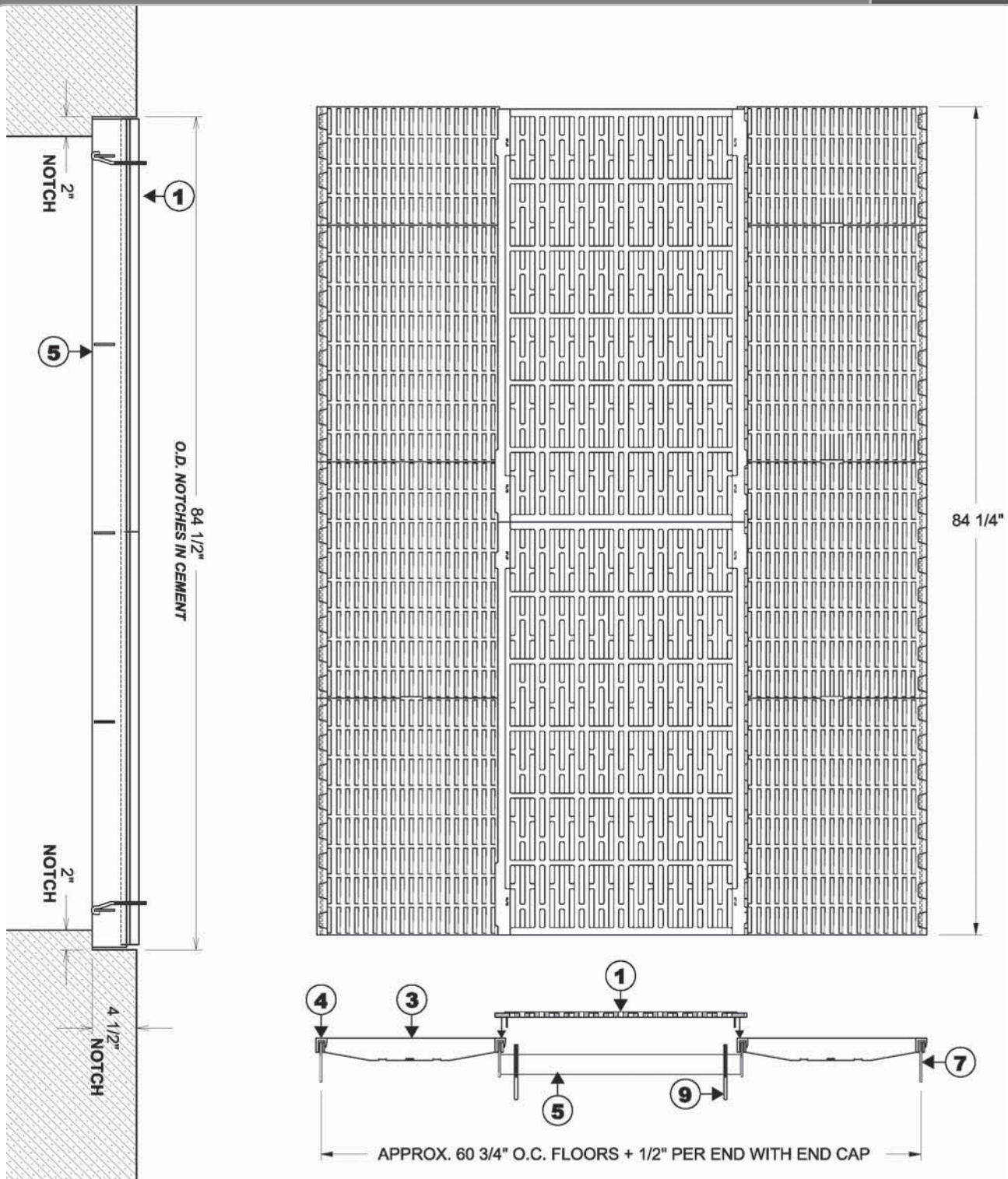
# CAST TOPLOCK/ 84" ON CENTRE FLOOR

**2095C84-C** - GALV. + CAST + TPL 60" X 84" (O.C. CREEP)

**2095C90-C** - GALV. + CAST + TPL 60" X 90" (O.C. CREEP)

**S2095C84-C** - SS + CAST + TPL 60" X 84" (O.C. CREEP)

**S2095C90-C** - SS + CAST + TPL 60" X 90" (O.C. CREEP)

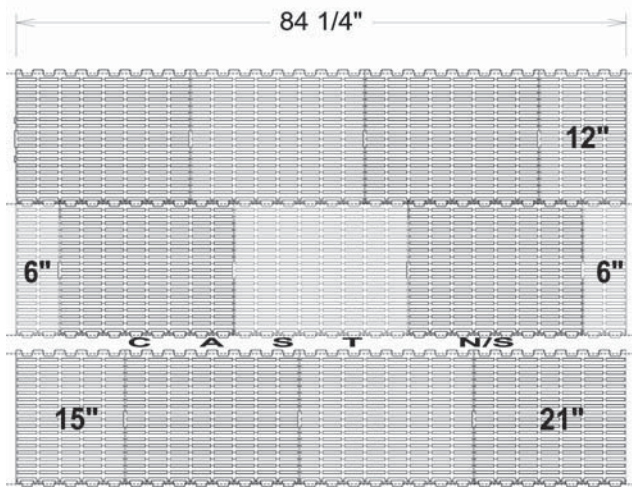


## ASSEMBLY

### 84" FLOOR

#### CUT SLATS AS SHOWN FOR MIN. WASTAGE

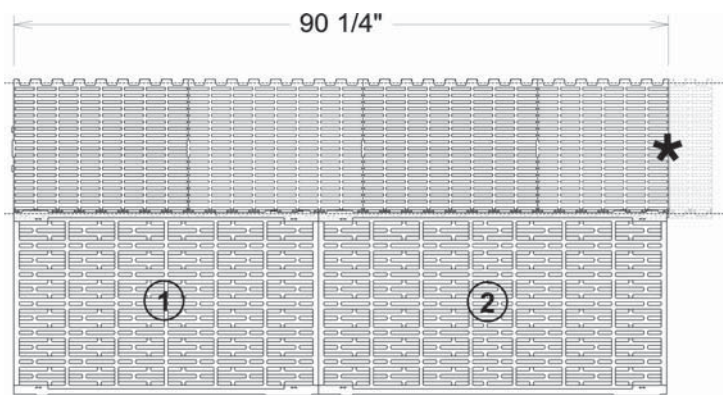
- \* Leave full thickness of rib when cutting slats to fit\*
- Correct amount of slats included in each 5 x 7 floor



### 90" FLOOR

#### CUT SLATS AS SHOWN FOR MIN. WASTAGE

- \* Leave full thickness of rib when cutting slats to fit\*
- Cut approximately 6" off last slat in each row
- This 6" is waste and is not reused



ILLUS.	DESCRIPTION	PART #
1	CAST 24 3/8" O.C. WIDE X 42" LG.	2096942
2	CAST 24 3/8" O.C. WIDE X 48" LG.	2096948
3	PLASTIC NURSERY FLOOR 18" X 24"	2099650
4	PLASTIC ENDCAPS 24" LG. (L + R)	2099600-E
5	24 3/8" X 84" GALV. FRM/CAST	2095984
N/S	24 3/8" X 90" GALV. FRM/CAST	2095990
7	GALV. RAIL 3.5" X 84"	2090927
N/S	GALV. RAIL 3.5" X 90"	2090927.5
9	PKG. 4 J-BOLTS/24 3/8" O.C. CAST	2096960

**NOTE:**  
THESE FRAMES AND  
RAILS ARE ALSO  
AVAILABLE IN  
STAINLESS STEEL

## ASSEMBLY INSTRUCTIONS

- 1) Start by snapping plastic slats together to make a 1 pc. unit. (18" wide x 84" or 90" lg.).
- 2) Install small endcaps to first row of flooring. Insert the first rail in this groove.
- 3) Insert galv. frame in the leading tabs of first row of slats. Snap large endcaps over tabs to create a ledge for cast to sit on. Install endcaps to a row of flooring. Place this row of slats (with endcaps) over second rail of frame. Continue installing slats & frames until entire pit length is covered.
- 4) Lay in cast pieces.
- 5) J-bolts to fasten crate will hook around cross support of frame.



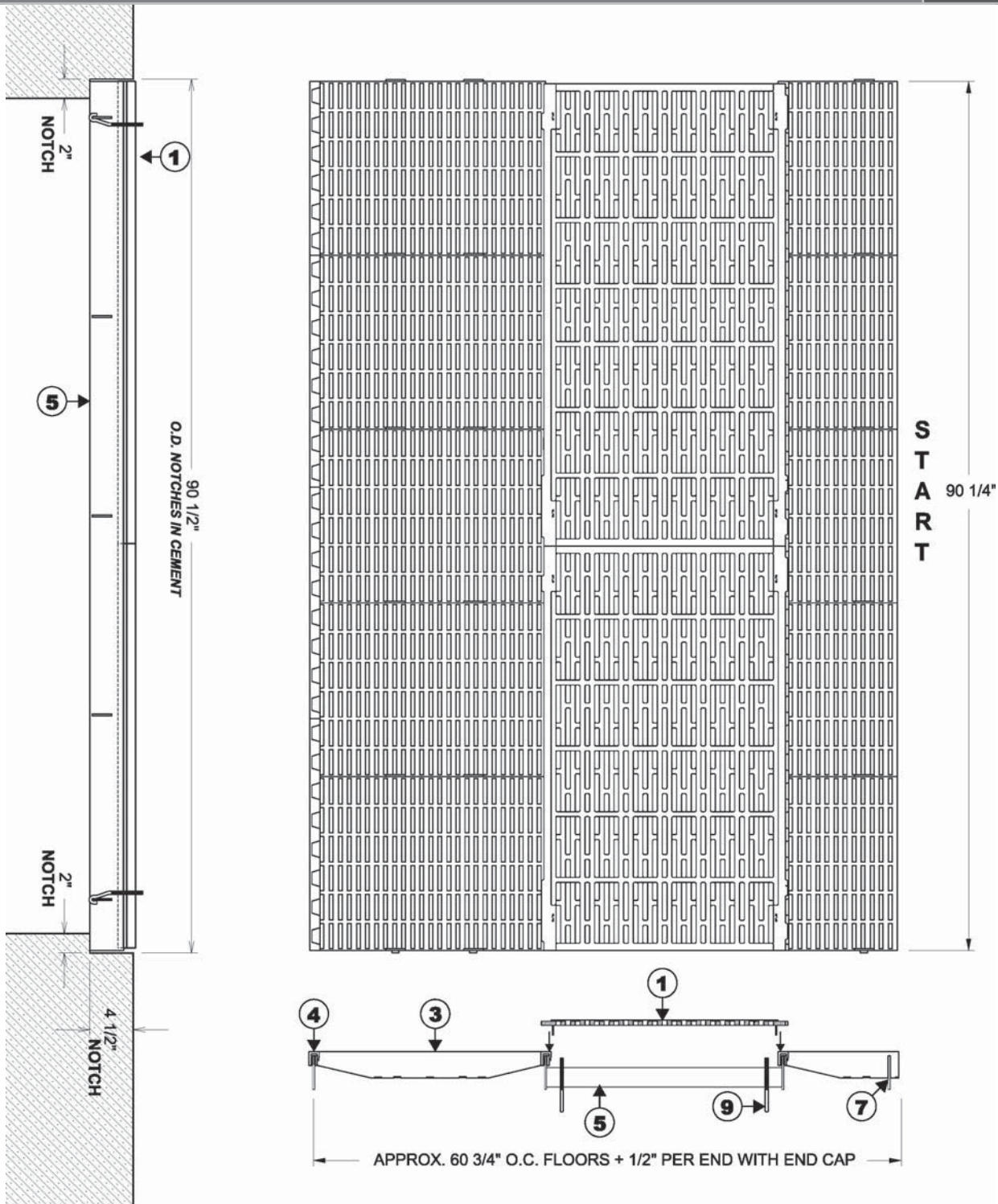
# CAST TOPLOCK/ 84" OFFSET FLOOR

**2096C84-F** - GALV. + CAST + TPL 60" X 84" (OFFSET CREEP)

**2096C90-F** - GALV. + CAST + TPL 60" X 90" (OFFSET CREEP)

**S2096C84-F** - SS + CAST + TPL 60" X 84" (OFFSET CREEP)

**S2096C90-C** - SS + CAST + TPL 60" X 90" (OFFSET CREEP)

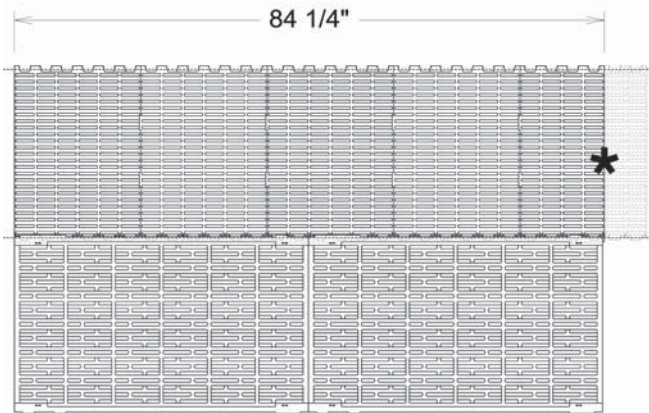


## ASSEMBLY

### 84" FLOOR

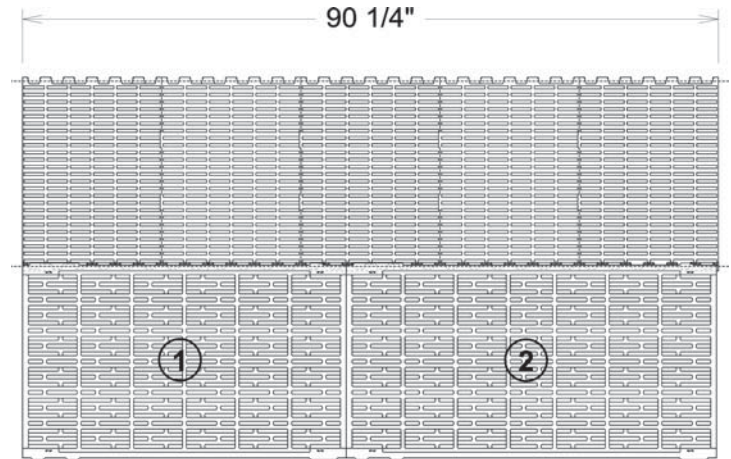
#### CUT SLATS AS SHOWN FOR MIN. WASTAGE

- \* Leave full thickness of rib when cutting slats to fit\*
- Cut approximately 6" off last slat in each row
- This 6" is waste and is not reused



### 90" FLOOR

#### FITS 90" FLOOR PERFECTLY



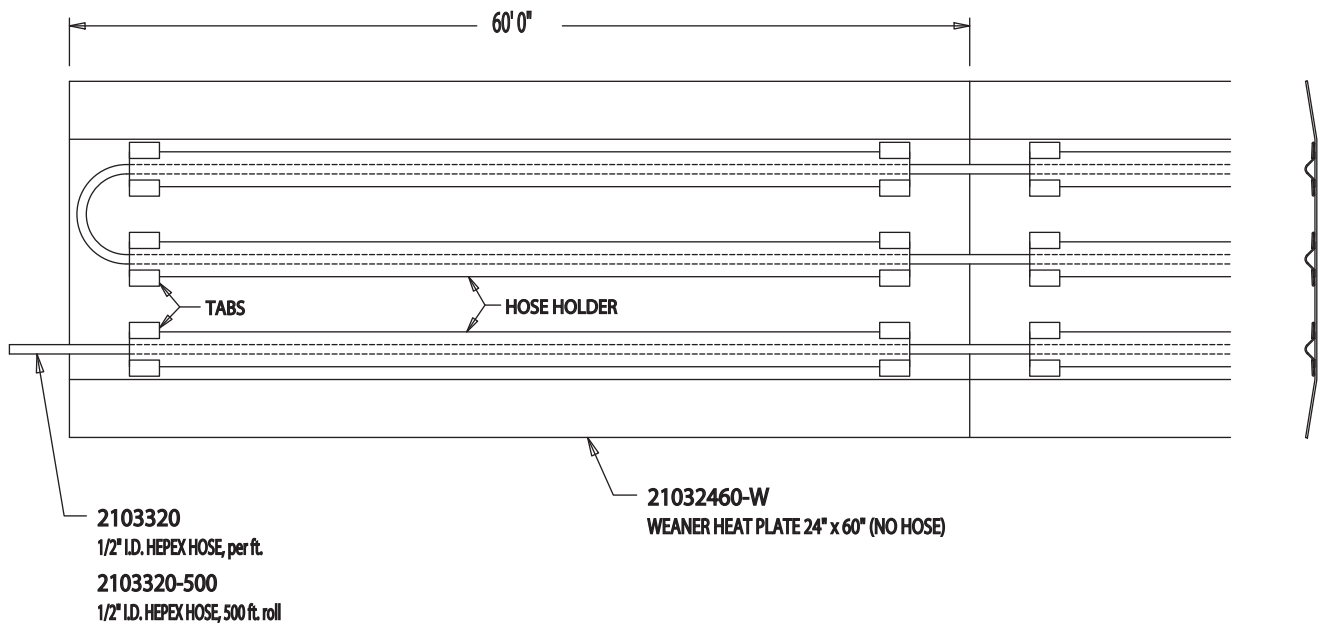
ILLUS.	DESCRIPTION	PART #
1	CAST 24 3/8" O.C. WIDE X 42" LG.	2096942
2	CAST 24 3/8" O.C. WIDE X 48" LG.	2096948
3	PLASTIC NURSERY FLOOR 24" X 18"	2099750
4	PLASTIC ENDCAPS 24" LG. (L + R)	2099600-E
N/S	24 3/8" X 84" GALV. FRM/CAST	2095984
5	24 3/8" X 90" GALV. FRM/CAST	2095990
7	GALV. RAIL 3.5" X 84"	2090927
N/S	GALV. RAIL 3.5" X 90"	2090927.5
9	PKG. 4 J-BOLTS/24 3/8" O.C. CAST	2096960

**NOTE:  
THESE FRAMES AND  
RAILS ARE ALSO  
AVAILABLE IN  
STAINLESS STEEL**

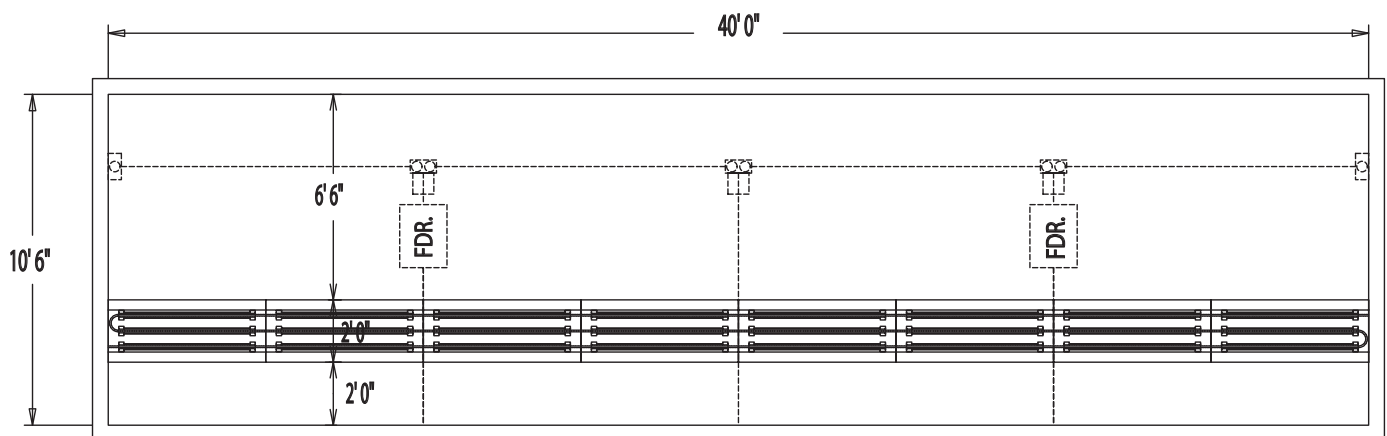
## ASSEMBLY INSTRUCTIONS

- 1) Start by snapping plastic slats together to make a 1 pc. unit. (24" wide x 84" or 90" lg.).
- 2) Cut preassembled floor in half to make 2 pcs. 12" x 84".
  - If you have an even # of crates you will end up using leftover 12" x 84" cut piece.
  - If you have an odd # of crates you will end up with a 24" x 84" floor.
  - Use left over 12" x 84" pc. for completing next pit length.
- 3) Cut a groove in end for rail, APPROXIMATE. 1" from edge of slat.
- 4) Insert first rail in cut groove.
- 5) Insert frame in the leading tabs of first row of slats. Snap large endcaps over tabs to create a ledge for cast to sit on. Install endcaps to another row of flooring. Place this row of slats (with endcaps) over second rail of frame pc. Continue installing slats & frames until entire pit length is covered.
- 6) Lay in cast pieces.
- 7) J-bolt to fasten crate will hook around cross support of frame. (Extra t-bolts required for euro crates).

## ASSEMBLY



## TYPICAL HEAT PLATE INSTALLATION

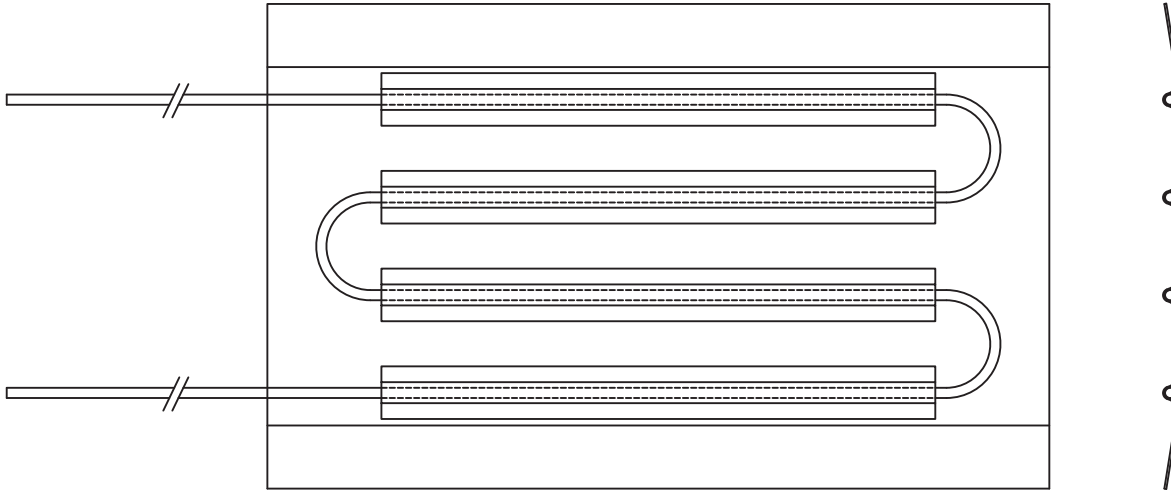


## INSTALLATION INSTRUCTIONS

- 1) Lay heat plates on floor with hose holders facing up.
- 2) Run a continuous length of hose through all heat plates being installed.
- 3) Slide a hose holder over hepex hose and under tabs.
- 4) Turn all heat plates right side up.

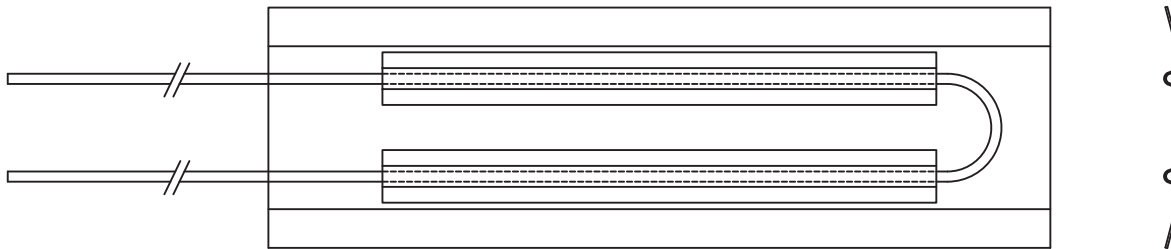
## 21033048-F

HEAT PLATE 30" X 48" + 10' HOSE + COUPLER



## 21031548-F

HEAT PLATE 15" X 48" + 10' HOSE + COUPLER



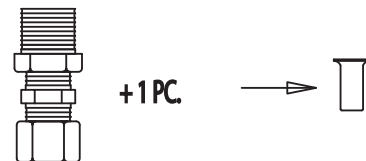
## 2103324-4

BAG OF 4 COUPLER/5/8" OD HOSE



## 2103325-4

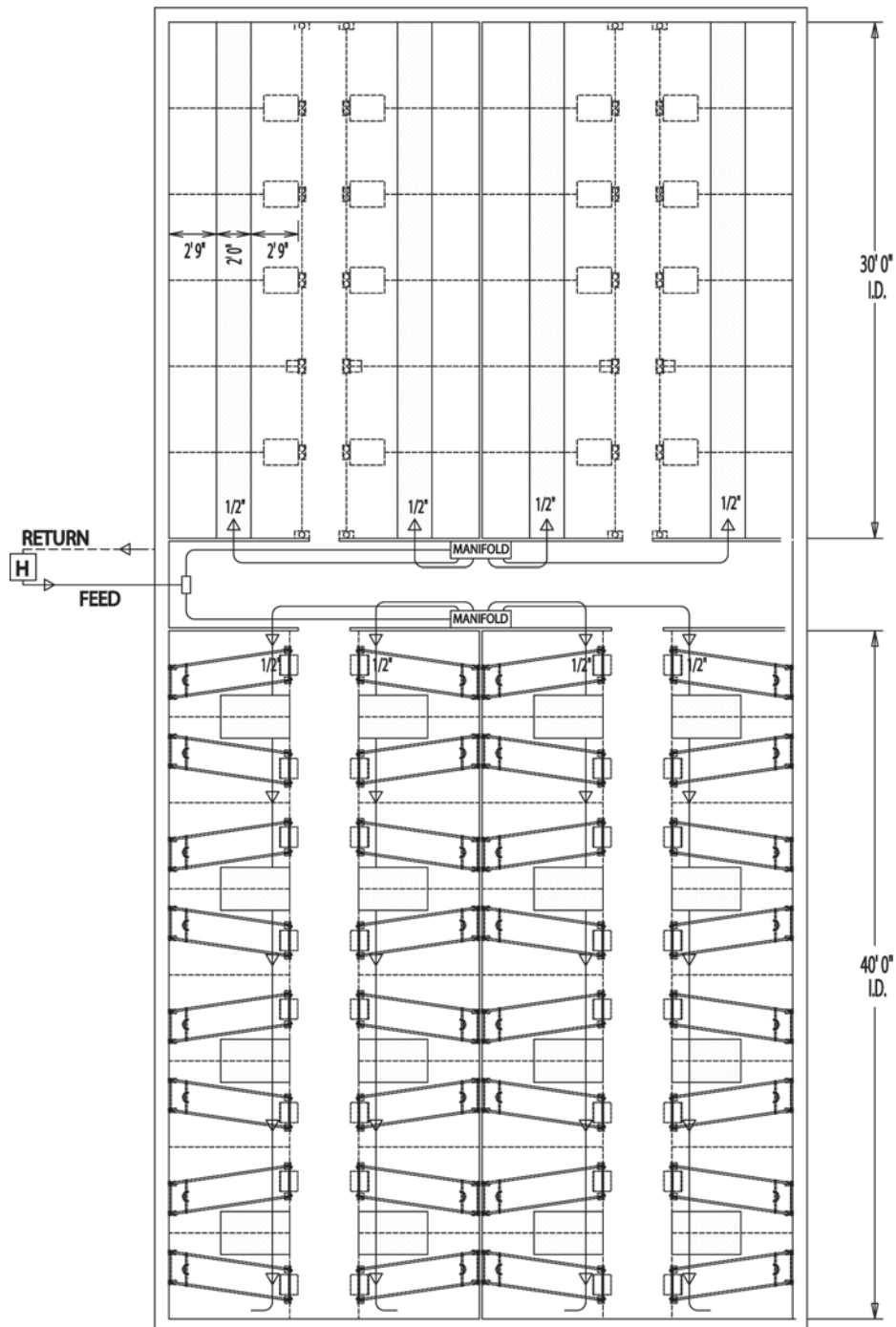
+1 PC.



## ASSEMBLY

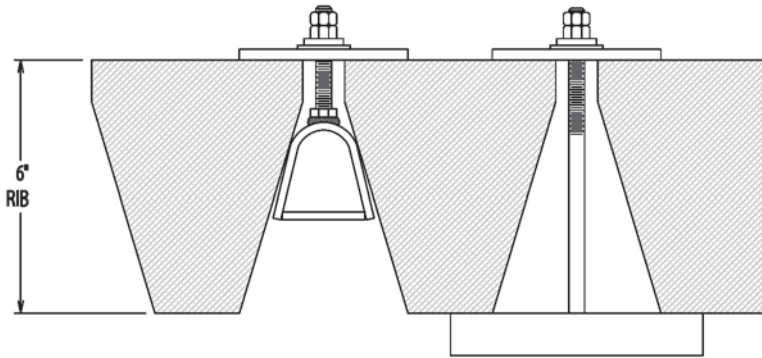
**H** BOILER + EXPANSION TANK (APPROX. 70 BTU / HOUR / SQ FT OF HEAT PLATE)

**MANIFOLD** FEED & RETURN MANIFOLDS c/w PUMP  
THERMOMETER ON RETURN LINES TO SHOW WATER TEMP.  
RETURN LINE NOT SHOWN



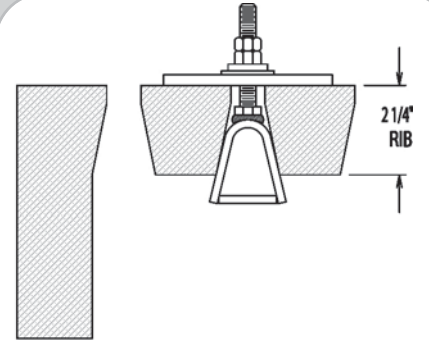
## WEDGE OR T-BOLT (CONCRETE)

**2100125-20**  
WIDE WEDGE BOLT (BOX OF 20)



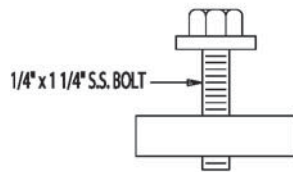
**2100121-20**  
7 1/4" LG. T-BOLT (BOX OF 20)

**2100225-20**  
NARROW WEDGE BOLT (BOX OF 20)

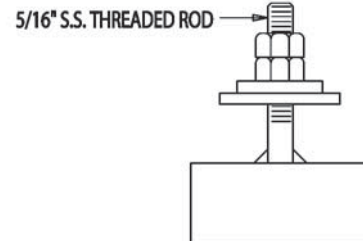


## T-BOLTS

**2099220**  
PKG OF 4 T-BOLTS (BLOCK & WASHER)

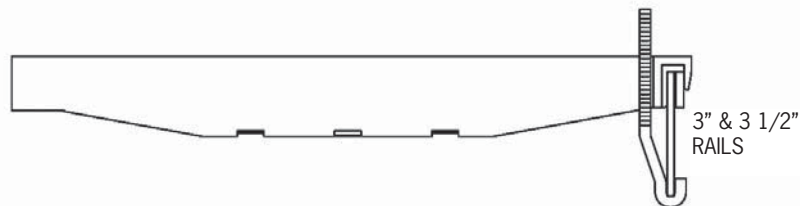


**2100120-120**  
T-BOLT 2" LG. (BOX OF 20)



## TOPLOCK J-BOLTS

**2100135-20**  
J-BOLT 5 1/4" LG. (BOX OF 20)



## V-BAR FLOORING

1. **Order V-Bar**
  - Specify length, can be custom made to length
  - Specify supported or unsupported

## TOP LOCK FLOORING

1. **Order Flooring**
  - Specify type of flooring for type of pigs
2. **Order Support Rails**
  - Specify galvanized, fiberglass or stainless
  - Specify length of pit
  - At end of each pit, need to order extra rail and groove flooring OR order special S.S. angle

**CONSULT CANARM/BSM FOR COMPLETE ORDERING DETAILS ON OUR POST SYSTEM**

3. **Order Endcaps**
  - For 2099600, 2099650, 2099675 & 2099750, please order 2' end caps (come as pkg of 2 (left and right included))

## FARROWING FLOORING

1. **Order farrowing floors**
  - choice of V-bar or cast iron sow sections
  - choice of galvanized, stainless steel supports
  - choice of on-centre or offset floors

**\* BE SURE TO ORDER 1 EXTRA RAIL (3" FOR V-BAR/TOPLOCK & 3.5" FOR CAST/TOPLOCK) + 3.5 ENDCAPS PER ROW OF CRATES (ORDER 4 FOR A 7'6" FLOOR)**

**\*\* PLEASE NOTE: MUST ORDER 3 EXTRA 2099750 (NURSERY SLATS) IF THERE ARE AN ODD NUMBER OF FLOORS PER JOB**

**\*\*\*IF ORDERING V-BAR/TOPLOCK FARROWING FLOORS AS PARTS, MUST ORDER CLEAN-OUT SEPARATELY**

## OPTIONAL ITEMS

1. **Heat Plates - Weaner**
  - Order plates
  - Order hose, 15' per plate + extra for plumbing
  - Order 2 threaded fittings (2013325-4) per loop of 8 plates
  - Order 2 T-bolts per plate (2100120-20)

### INSTALLATION GUIDELINES

**Installation Guidelines – Any deviation from these guidelines must be approved by the Canarm Customer Service and Engineering Departments**

Plastic flooring systems will expand and contract with temperature change. Expansion gap guidelines must be followed. The flooring guidelines below must be followed to ensure warranty. Livestock Flooring products are designed to carry normal livestock loads and densities. They are not designed to be work-platforms for construction and contractor operations. Care should be taken to avoid sudden impacts and point loads, such as ladders, during the installation process. Care should also be taken to walk on the top of the support rails or beams.

1. Store all flooring parts inside and at 70°F/20°C for at least 48 hours before installation.  
**Never install flooring that has not been properly warmed.**
2. Use only Canarm supplied support system and installation guidelines. Any deviation from this should be discussed with and approved by our customer service and engineering departments. Using rails thicker than 3/16" (4.75 mm) will result in damage to the floor and possible failure.
3. Leave room for expansion at walls, and an expansion joint in floor runs of over 60 feet (18 meters). (Refer to the **Thermal Expansion chart** on next page for guidelines.)
4. Some floor designs allow for staggered joints. This is recommended for maximum strength and stability.
5. All expansion gaps should be covered with a "cove" that will allow expansion and contraction of the floor.
6. Avoid hammering on the flooring and only use a soft rubber mallet when necessary.
7. Support rails and beams must be installed straight and plumb.
8. Minimum of 2" (50.8 mm) of rail should be supported on curbs, and rail should be long enough to prevent linear shifting off the curb.
9. Rails should not be fastened to the curb, as the flooring system must be allowed to expand, contract and "float" when necessary.

### SPAN WIDTH AND RAIL HEIGHT REQUIREMENTS

- All steel rails must be 3/16" (4.7 mm) thick.
- Up to 96" (2438 mm) long and 3" (76 mm) high.
- 96" (2438 mm) - 120" (3048 mm) long and 3.5" (88.9 mm) high
- For rails over 120" (3048 mm) long, please call for center support recommendations.

### THERMAL EXPANSION

Whenever possible, always install hog flooring at the room operating temperature.

If installing below the operating temperature, use the **Thermal Expansion chart** on next page to calculate the expansion gap to be used between walls and flooring.

If the floor is longer than 60 feet (18 meters), an expansion joint is needed. To make an expansion joint, use two support beams side by side and leave a gap between floor parts (proper expansion gap can be calculated by referring to the **Thermal Expansion chart** and then doubling the value).

### THERMAL EXPANSION GAP

The gap distance depends on the floor length, and the installation temperature vs. room operating temperature.



### THERMAL EXPANSION CHART

LENGTH/WIDTH OF FLOORING SECTION		INSTALLATION - DEGREES BELOW OPERATING TEMPERATURE		EXPANSION GAP TO LEAVE AT EDGES OF FLOOR SECTION (DOUBLE BETWEEN FLOOR SECTIONS)		
FEET	METRES	FAHRENHEIT	CELCIUS	INCHES	INCHES	MILLIMETRES
10'	3m	0	0	0.1250	1/8"	3mm
10'	3m	10	6	0.1563	5/32"	4mm
10'	3m	20	11	0.1875	3/16"	5mm
10'	3m	30	17	0.2500	1/4"	6mm
10'	3m	40	22	0.3125	5/16"	8mm
20'	6m	0	0	0.1875	3/16"	5mm
20'	6m	10	6	0.3125	5/16"	8mm
20'	6m	20	11	0.3750	3/8"	10mm
20'	6m	30	17	0.5000	1/2"	13mm
20'	6m	40	22	0.6250	5/8"	16mm
30'	9m	0	0	0.2500	1/4"	6mm
30'	9m	10	6	0.4688	15/32"	12mm
30'	9m	20	11	0.5625	9/16"	14mm
30'	9m	30	17	0.7500	3/4"	19mm
30'	9m	40	22	0.9375	15/16"	24mm
40'	12m	0	0	0.3750	3/8"	10mm
40'	12m	10	6	0.6250	5/8"	16mm
40'	12m	20	11	0.7500	3/4"	19mm
40'	12m	30	17	1.0000	1"	25mm
40'	12m	40	22	1.2500	1-1/4"	32mm
50'	15m	0	0	0.5000	1/2"	13mm
50'	15m	10	6	0.7813	25/32"	20mm
50'	15m	20	11	0.9375	15/16"	24mm
50'	15m	30	17	1.2500	1-1/4"	32mm
50'	15m	40	22	1.5625	1-9/16"	40mm
60'	18m	0	0	0.6250	5/8"	16mm
60'	18m	10	6	0.9375	15/16"	24mm
60'	18m	20	11	1.1250	1-1/8"	29mm
60'	18m	30	17	1.5000	1-1/2"	38mm
60'	18m	40	22	1.8750	1-7/8"	48mm

**Note - Double the gap for expansion gaps between sections of flooring.  
Flooring sections in excess of 60 ft / 18m, must have expansion gaps within.**