

Livestock Belt Feeders



Since 1948

**An economical way to automate
your feeding system!**



Patz Belt Feeders offer simplicity of design and reliable operation.

- **High capacity for fast feeding!**
- **Customizable to fit your needs.**
- **Mounts down the center or side of feed bunks, or from ceiling.**

**FLEXIBLE PAYMENT
PLANS AVAILABLE.
ASK FOR DETAILS.**



FEEDINGSOLUTIONS
www.patzcorp.com

Choose 12 or 16-inch belt with concave, deep-trough design for maximum capacity!

Fast removal – up to 390 feet per minute!

Even distribution!

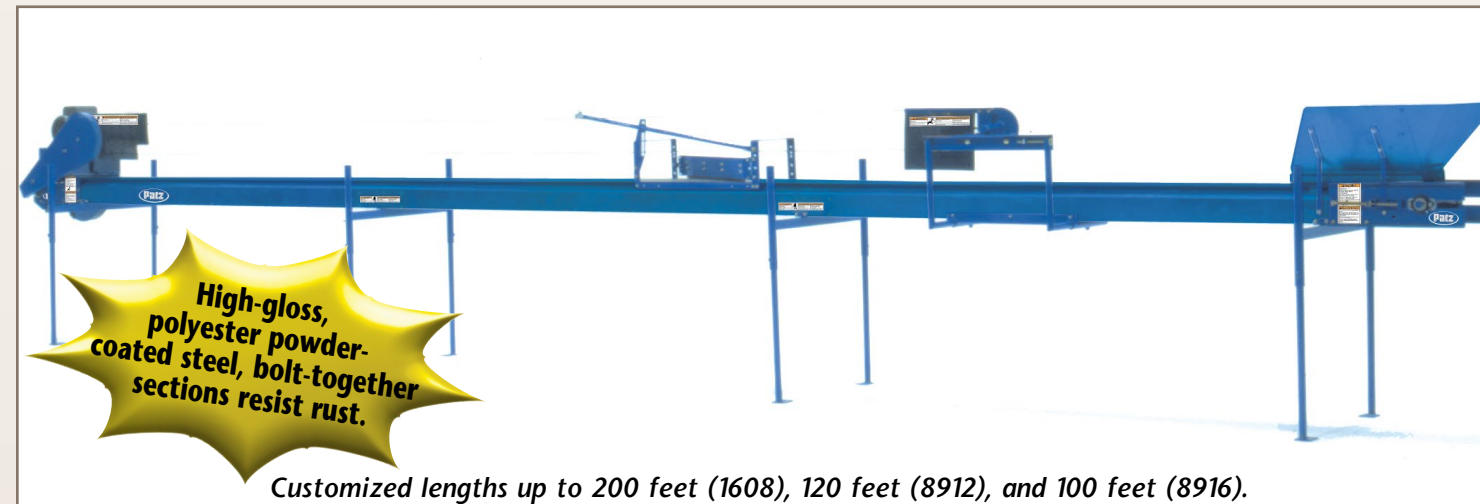
Push-button convenience!

Patz Belt Feeders are economically priced and offer exceptional performance and layout versatility with many valuable features. Adding options as needed provides a custom-built feeder for your exact needs, saving you money.

Feeders mount down the center or side of feed bunks, or can be ceiling mounted in barns.

Adjustable stands support and couple feeder sections for convenient installation. Height adjusts easily.

The durable belt uses a proven alligator staple splice of stainless steel or a Clipper® splice. A take-up idler provides easy adjustment of belt tension and tracking.



High-gloss, polyester powder-coated steel, bolt-together sections resist rust.

Customized lengths up to 200 feet (1608), 120 feet (8912), and 100 feet (8916).

The **one-way floating plow** drops feed off one side of the feeder only, but can feed up to two lots different rations by using the 2-motor drive feeder.



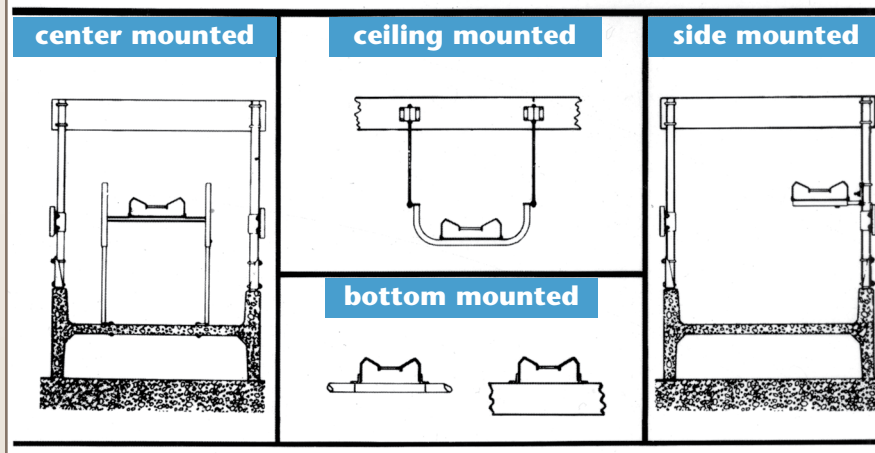
The **two-way floating plow** can plow off either side of the belt and is also used if you wish to reverse the belt for adding feed at various points. A remote electrical control is used to switch feeding from one side of bunk to the other. Feed up to four lots different rations by using a 2-motor drive feeder and a plow drive assembly. An optional deflector on the plow drops feed closer to the feeder.



One motor drives both the belt and plow (roller-chain drive) to feed one lot, or to feed two lots different rations when the bunk is split lengthwise. The plow reverses around a pulley automatically and smoothly at each end of the feeder with continuous-loop cable drive.

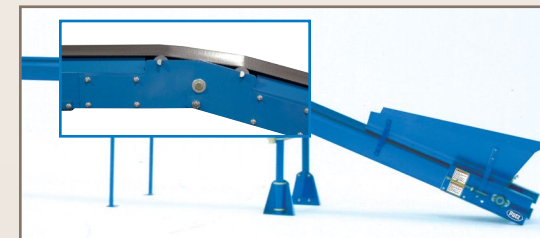


Patz Feeders can be mounted several ways:



“The Patz feeders distribute the feed so even... It takes a Patz feeder to produce the highest quality beef.”
-Pennsylvania Beef Farmer
800 Head

“We especially like the push-button feeding system on rainy days and during cold winter weather.”
-Wisconsin Dairy Farmer
700 Head



Elevate feed and then convey level with an adjustable elbow. The belt stays concave with a deep trough when passing over the elbow for maximum capacity. Shown with optional end hopper.

Open-pan design provides deep trough for extra capacity and reduces belt friction for lower power requirements. Fin pulley helps avoid feed buildup.



Specifications

● Capacity:

8912
29 cu. ft./min. (.82 cu. m/min) (granular materials @ 34#/cu. ft. [5.45 kgs/cu. m]) or 56 cu. ft./min. (1.59 cu. m/min) (fibrous materials @ 18#/cu. ft. [2.88 kgs/cu. m]) max. 1000#/min. (454 kgs/min) depending on elevation and type of material. Frozen material may reduce capacity.

8916
47 cu. ft./min. (1.33 cu. m/min) (granular materials @ 34#/cu. ft. [5.45 kgs/cu. m]) or 90 cu. ft./min. (2.55 cu. m/min) (fibrous materials @ 18#/cu. ft. [2.88 kgs/cu. m]) max. 1600#/min. (726 kgs/min) depending on elevation and type of material. Frozen material may reduce capacity.

1608
49 cu. ft./min. (1.39 cu. m/min) (granular materials @ 34#/cu. ft. [5.45 kgs/cu. m]) or 95 cu. ft./min. (2.69 cu. m/min) (fibrous materials @ 18#/cu. ft. [2.88 kgs/cu. m]) max. 1690#/min. (767 kgs/min) depending on elevation and type of material. Frozen material may reduce capacity.

● **Span:**
Up to 20 ft. (6.096 m) (conveying portion).
10 ft. (3.048 m) between supports when used as a feeder.

Optional covers protect feed & feeder from wind, rain, snow, & ice.

● **Belt:**
8912 12 in. (305 mm) or
8916 & 1608 16 in. (406 mm), smooth-surface interwoven polyester impregnated with polyvinyl chloride (PVC). Premium cold temperature or standard temperature belting available. Belt Speed: 370 FPM (113 m/minute) (8912 & 8916 units) or 390 FPM (119 m/minute) (1608 unit).

● **Length:**
8912
Forward direction up to 120 ft. (36.576 m) (forward: material moving toward drive end).

8916
Forward direction up to 100 ft. (30.480 m), reversible up to 75 ft. (22.860 m) (forward: material moving toward drive end).

1608
Forward direction up to 200 ft. (60.96 m) (forward: material moving toward drive end).

● **Section:**
10 ft. (3.048 m), 16 ga. (1.52 mm), high gloss polyester powder coated steel, concave, open center.

● **Feeder Incline:**
Feeder can be installed at a maximum incline of 6" per 10'. (50 mm per meter)

● **Plows:**
Choice of one-way or two-way straight-blade. Plow Speed: 90 FPM. (27.432 m/minute)
Control: Reed switch on a 24 volt A.C. circuit (2-motor only).
Minimum lot length: 20 ft. (6.096 m).

● **Drive Unit:**
8912 and 8916
Double V-Belts (370 FPM). (113 m/minute)
1608
Direct drive through a speed reducer (390 or 260 FPM). (119 or 79 m/minute)

● **Electric Motor:**
2 to 3 HP (Models 8912 & 8916) or 3 to 5 HP (Model 1608) depending on length, elevation, and type of material.

● **Recommended Use:**
Silage and grains. Machines installed outside should be covered.

● **Options:**
Covers, hoppers, deflectors, plows, adjustable elbow, belt wipers, convey sides, and urethane plow off blades.

8912, 8916, & 1608 Belt Feeders

An affordable & efficient way to move your feed.

Reasons why choosing genuine Patz Belt Feeders are your best investment!

1. **Dependable, superior, quality products.**
Since 1948, Patz has established a tradition of quality by providing products that have gained a world-wide reputation for long-lasting dependability and superior performance.
2. **Customer support services before and after the sale.**
3. **Company certified technical support personnel with years of experience are just a phone call away.**
4. **Flexible payment plans available.**
5. **Local Patz dealership support.**
The same dedication to quality that Patz exhibits in equipment is expressed in the training and the type of person chosen to be a Patz dealer. Patz sponsors a continuing program of training seminars that consist of intense in-the-field and in-plant training sessions.

From sales to certified service personnel, your local Patz dealer has the expertise, products and programs to keep your operation running efficiently and successfully.

6. **Leading written warranty in the industry.**

PATZ® - the name you can trust to meet your material handling requirements!



CAUTION: Never operate Patz equipment without all shields and guards in place. **Safety Is No Accident.** Before operating any piece of equipment, be sure to read and understand the operator's manual. This manual should be kept with the machine at all times.

Additionally, make sure all safety shields and devices are functioning properly and are securely in place.



For some photos in this brochure, guards were removed for photographic purposes only to allow viewing of the equipment features. Before operating equipment, all guards must be in place. Because Patz continually improves and updates products, Patz reserves the right to change the construction of machines or attachments or any part thereof without incurring any obligation to make like changes on Patz machines, or attachments previously delivered.

Specifications and prices subject to change without notice.



Patz®

Since 1948

Proven Performance You Can Count On!

Patz Corporation

917 Business 141, POB 7 • Pound, Wisconsin 54161-0007

Ph: (920) 897-2251 • Fax: (920) 897-2142

www.patzcorp.com • info@patzcorp.com

