



Since 1948

400 Material Mover

Designed for:

- Moving large volumes of material easily through troughs, around corners and up inclines.
- Continuous operation.
- Layout flexibility and versatility.
- Low maintenance.
- Long life.

Features Patz
Hook-&Eye
Chain Link!



High-Gloss
Polyester
Powder Coated



Proven Performance You Can Count On!

Standard features of the Patz 400 Material Mover.

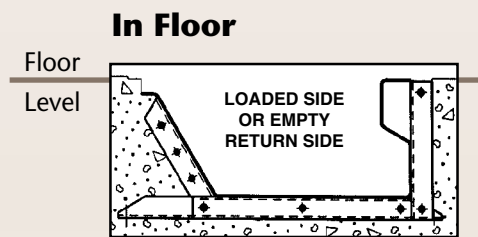
- Ashes
- Bark
- Cabbage
- Chips
- Coal
- Compost
- Dredged Mud and Sand
- Dry Fertilizer
- Feed
- Food Processing Waste
- Foundry Sand
- Fruits
- Grains
- Gravel
- Metal Shavings
- Mineral Ores
- Mud on Oil Rigs
- Nuts
- Oyster Shells
- Poultry Litter
- Pulp
- Recycling Materials
- Sawdust
- Sewage Sludge
- Slaughter House Waste
- Sweet Corn
- Trash/Rubbish
- Vegetables
- Wood Scraps

Since 1948, Patz has been manufacturing heavy-duty material-moving equipment. Today our proven Patz equipment is exceeding expectations in a wide range of industries around the world.

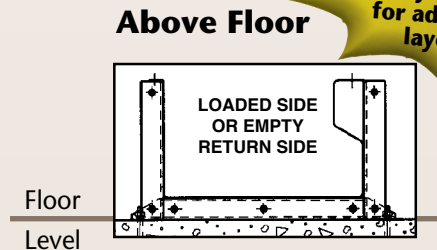
Layout Flexibility: The simplicity of the design and layout flexibility of Patz Material Movers make our systems easy to adapt to your needs as an economical investment. As your material moving needs grow and change, optional equipment or new units can be added to keep pace with individual requirements. We offer chain lengths up to 400 feet.

The 400 Material Mover, made of 11-gauge HSLA steel, handles big jobs and moves material long distances. Available as a complete bolt-together unit, or sections can be connected to concrete channel via a hold down post, or cemented in below floor level.

Low maintenance: Automatic chain tightener maintains proper chain tension and allows easy link removal for dependable performance.



60° Slanted Sidewall for conveying wood blocks, bark, sawdust with cutoff pieces, compost or dirt with clumps or small stones.



90° Sidewall for moving pure fines and small particles such as sawdust, shavings, sand, dirt, compost, metal shavings, filings, or chips.

See Technical Data and Layout Planner for additional layouts.

Versatility: A Patz Material-Moving System enables you to transport materials horizontally, around corners, up inclines, and levels out again.

The single-trough, slanted steel sidewall comes in bolt-together sections to provide flexibility and adaptability for a multitude of layouts. They may be anchored on top of a solid surface, embedded in concrete, or both. Sections are made of high-strength, corrosion-resistant steel.

For conveying wood scraps, bark, and similar rigid materials, slanted sidewalls and chain covers are required.



This **Return Corner** is anchored in concrete. A steel wear plate protects the floor. An optional ultra-high-molecular-weight (UHMW) return shoe reduces friction when moving dry material. (Gutter cover removed for viewing.)

The **Corner Wheel** allows chain to go around a corner and maintain alignment in trough. Wheel flanges minimize floor wear. The wheel and axle are easily removed if replacement is necessary, meaning less down time! Corner wheel is through-hardened for greater service life.



A graphite-impregnated, laminated bearing and grease zerk lubrication assure smooth turning. Optional double corner wheel consists of two 12" (30.48 cm) diameter wheels for smooth operation under heavy loads (for concrete troughs).



▲ **Hold-down Post Section.** Available in 4-inch (18°) or 6-inch (25°) pitch inclines.



▲ **Corner Sections.** A 90° corner section permits easy turns. A 22-1/2° corner section is also available in double trough sections for added versatility. (Optional chain cover shown above.)

Choice of Drive Units

Features Patz Hook-and-Eye Chain Link

Each proven Patz hook-and-eye link is made from more than two pounds (907g) of steel by advanced closed-die forging. The hook is designed for extra strength, and the eye allows free chain operation and flexibility.

Closed-die forging refines the grain structure and develops the optimum grain flow, which maximizes impact toughness, fracture toughness and fatigue strength. Patz chain is not a casting. The rounded bearing surfaces produce a flexible chain and the smooth finish allows dependable drive sprocket action.

Holds close tolerance when heat treated. Patz links produces uniform hardness to resist wear while maintaining maximum strength.

Look for the **PATZ imprint** on each link – your guarantee of dependable, reliable performance year-round.

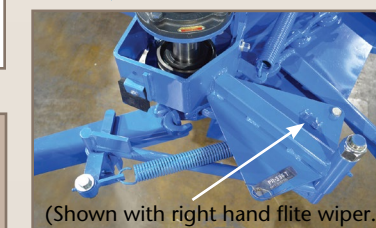
Patz steel flites are welded to the link - not bolted. An extra wide wear shoe is welded to the bottom of the flite to protect the trough and to extend the operating life.



Patz Heavy Duty Planetary Speed Reducer

◀ A **planetary speed reducer** is an excellent choice for most operations. This rugged, heavy-duty drive unit provides reliable performance you can depend on 24/7/365, so you can minimize maintenance and enjoy long service life! Choose from 5 chain speeds and various electric motor sizes from 2 to 7-1/2 hp.

◀ Shown with optional flite wiper. Available in right and left hand assemblies to help prevent material build-up and carry over on flites.

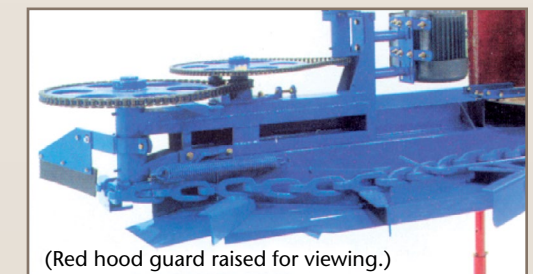


(Shown with right hand flite wiper.)



(Black hood guard removed for viewing.)

◀ The **203 gearbox reducer** is available with chain speeds of 24 or 36 F.P.M. and with 2 or 3 hp electric motor. Use for installations with low power requirements. All V-belt drives have taper bushings.



(Red hood guard raised for viewing.)

▲ **Final-drive roller chain reducer** is available with chain speeds of 18 or 30 F.P.M. and with 2 or 3 hp. Economical choice for limited hours of use per day.

Specifications

Simple Design for Years of Dependable Service Life!

Chain:

400 hook-and-eye, all-steel link.

Flites:

447: 2 in. x 2 in. x 1/4 in. (51 mm x 51 mm x 6.35 mm) angle for 18 in. (457 mm) wide gutter

467: 4 in. (102 mm) high on outer edge for 18 in. (457 mm) wide gutter

Flite Spacing:

12 in., 18 in. or 24 in. (305 mm, 457mm, 610 mm).

Gutter Width:

15 to 20 in. (381 to 508 mm) with 1/2 in. (13 mm) increments.

Motor:

2 hp., 3 hp., 5 hp., or 7-1/2 hp. available in single or three phase

Drive Unit:

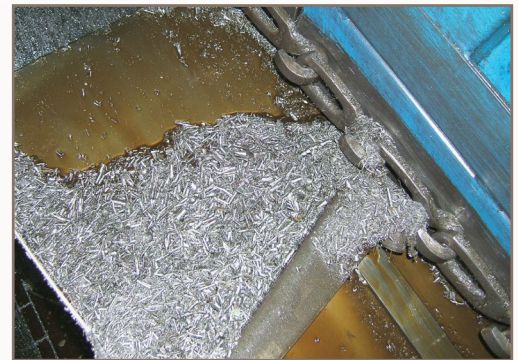
Heavy-duty planetary speed reducer drive unit; belt and roller chain drive.

Capacity:

41 cubic feet @ 36 FPM with 18 in. (457mm) flite spacing. Through trapdoor, 25 cubic feet/min.



▲ Conveniently convey material into trucks.



▲ Metal shavings drop into this **grate-covered trough** where a Patz Material Mover conveys them to a storage bin.

Printed Warranty

Patz equipment is guaranteed for a period of one year from date of sale or installation to be mechanically free of defects in material and workmanship under normal use and service.

Patz chain is backed by a 15-year (5-year full) extended written warranty. Compare the Patz chain's warranty with any other hook-and-eye chain warranty. You will see why Patz chain is your best investment. For your protection, insist on a printed warranty that details all of the items covered and exactly how compensation will be made.

Note: New Patz contact points must be installed at the same time as new Patz chain in order to qualify for warranty.



CAUTION: Never operate Patz equipment without all shields and guards in place. Safety is no accident. Before operating any piece of equipment, be sure to read and understand the operators manual. The manual should be kept with the machine at all times.

Additionally, make sure all safety shields and devices are functioning properly and are securely in place.



For some photos in this brochure, guards were removed for photographic purposes only to allow viewing of the equipment features. Before operating equipment, all guards must be in place. Because Patz continually improves and updates products, Patz reserves the right to change the construction of machines or attachments or any part thereof without incurring any obligation to make like changes on Patz machines, or attachments previously delivered.

Specifications and prices subject to change without notice.



Since 1948

Proven Performance You Can Count On!

Patz Corporation

917 Business 141, POB 7 • Pound, Wisconsin 54161-0007

Ph: (920) 897-2251 • Fax: (920) 897-2142

www.patzcorp.com • info@patzcorp.com

Find out more!

