

SH SERIES

POWER TAKE-OFF



DESIGNED FOR HIGH TORQUE APPLICATIONS

Created to fill the gap between the TG and 82 Series, the SH Series is an air shift only power take-off designed for high torque applications. The SH Series is an easy to mount PTO with an integral air shift design and high torque capacity.



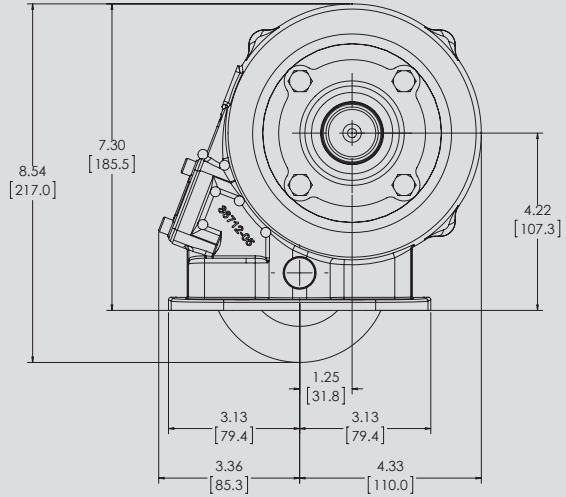
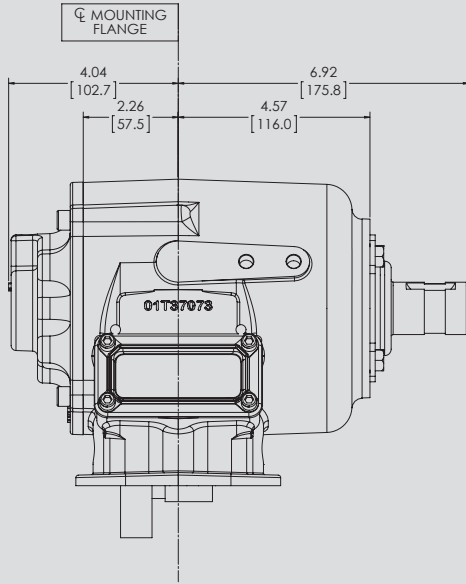
KEY FEATURES

- Integral air shift design: No exposed air cylinder
- High torque capacity: Meets demanding applications
- 17 input gear sets: Fits most popular transmissions
- 6 or 8-bolt cast iron housing: Easy to mount, high strength
- 5 speed ratios: Versatility
- 12 output shaft options: Fits most popular pump types

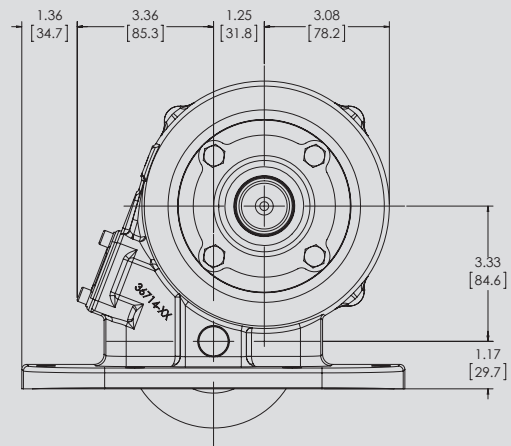
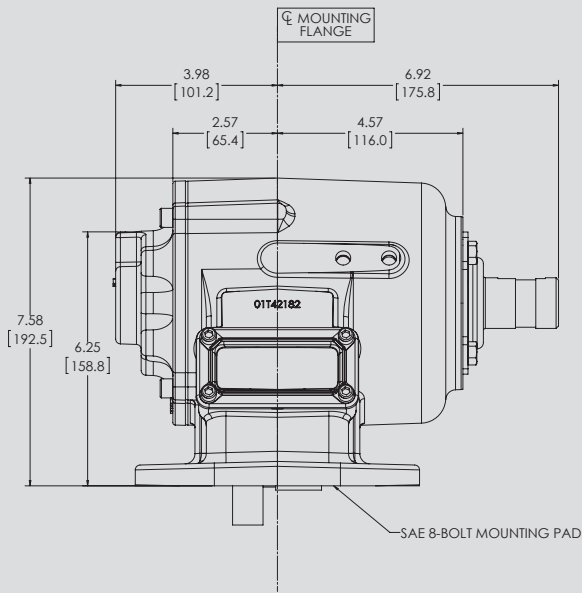
PTO TORQUE & HORSEPOWER RATINGS

SPEED RATIO	INTERMITTENT HP@1000 RPM	INTERMITTENT TORQUE LBS.FT.	CONTINUOUS TORQUE LBS.FT.	INTERMITTENT [KW]@1000 RPM	INTERMITTENT TORQUE [NM]	CONTINUOUS TORQUE [NM]
05	76	400	280	[57]	[542]	[379]
07	76	400	280	[57]	[542]	[379]
09	71	375	263	[53]	[508]	[356]
12	62	325	228	[46]	[441]	[309]
13	62	325	228	[46]	[441]	[309]

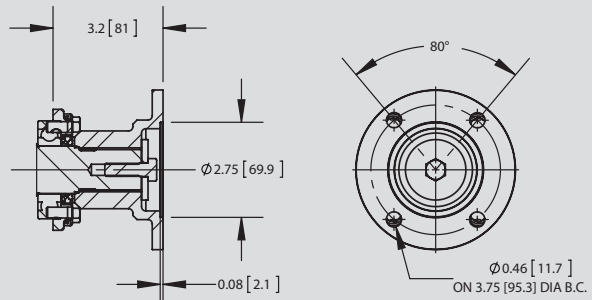
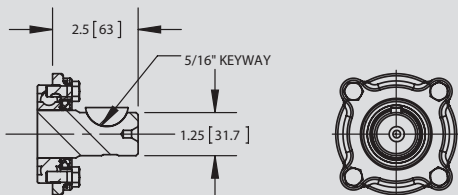
SH6 DIMENSIONS



SH8 DIMENSIONS



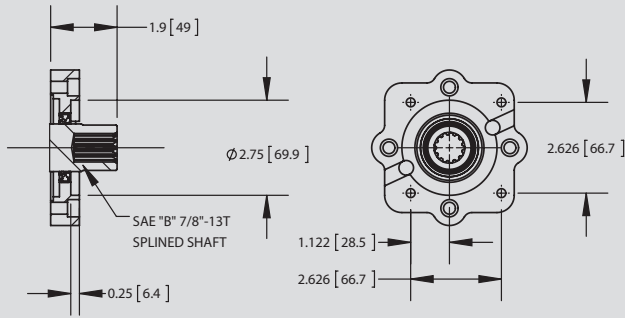
OUTPUT OPTIONS



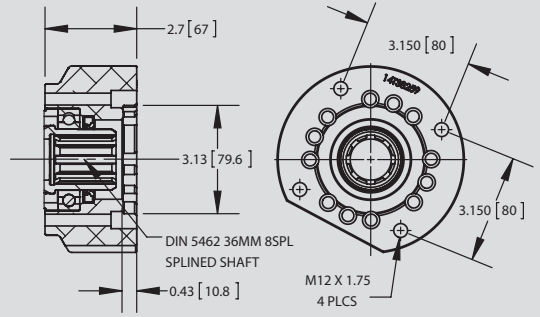
"B" OUTPUT - 1.25" RD SHAFT W/ 5/16" KEY

"C" OUTPUT - 1410 COMP FLANGE

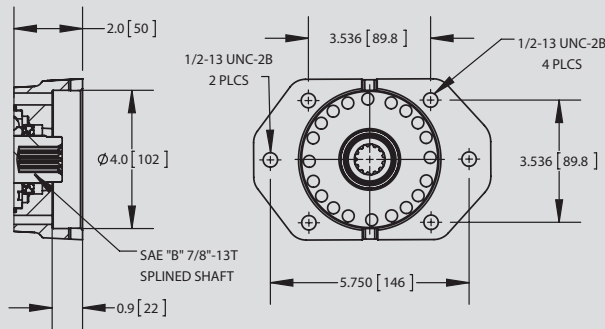
OUTPUT OPTIONS (CONT)



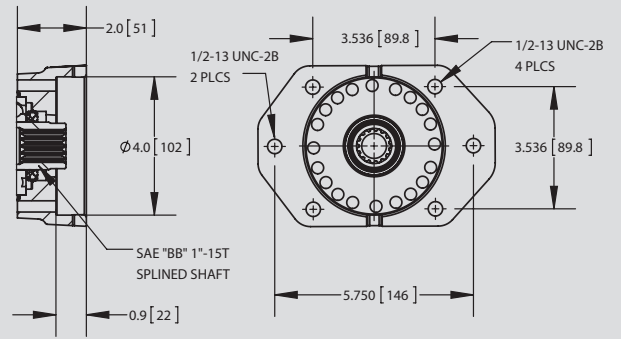
"G" OUTPUT - SPECIAL 4 BOLT DANA MOUNT FLANGE



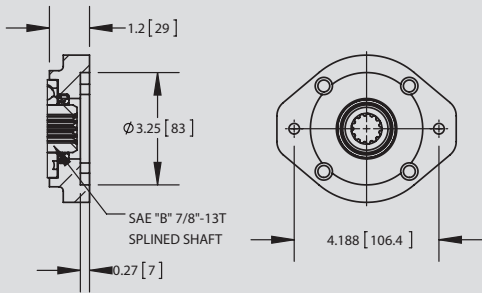
"I" OUTPUT - DIN 5462



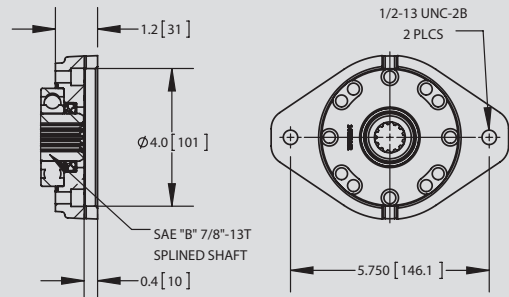
"K" OUTPUT - SAE "B" 2/4 BOLT



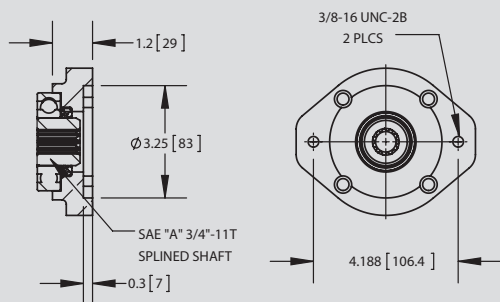
"P" OUTPUT - SAE "B" 2/4 BOLT FLANGE
SAE "BB" 1'-15T SPLINED SHAFT



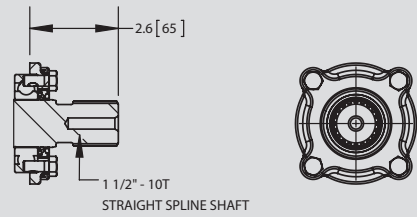
"Q" OUTPUT - SAE "A" 2 BOLT FLANGE
SAE "B" 7/8'-13T SPLINED SHAFT



"S" OUTPUT - SAE "B" 2 BOLT

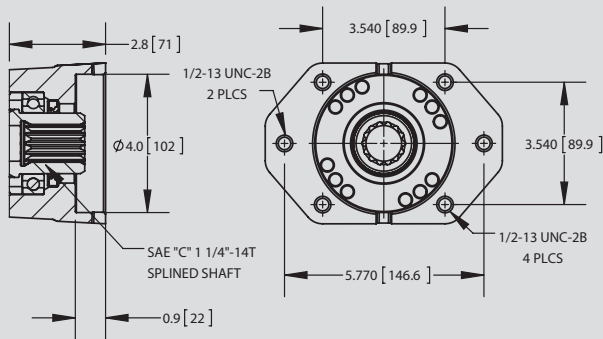


"T" OUTPUT - SAE "A" 2 BOLT FLANGE
SAE "A" 3/4'-11T SPLINED SHAFT

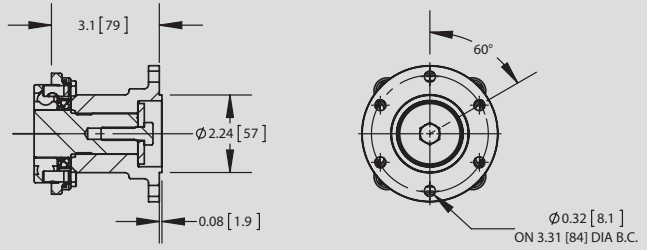


"X" OUTPUT - 1 1/2"-10T SHAFT
FOR COMP FLANGE

OUTPUT OPTIONS (CONT)



"Z" OUTPUT - SAE "B" 2/4 BOLT FLANGE
SAE "C" 1 1/4"-14T SHAFT



"2" OUTPUT - DIN 100 COMP FLANGE

MODEL NUMBER CONSTRUCTION

SH-8S-U68-12 A-1-B-X

PTO Type

SH Series — SH

Mounting

SAE 6 Bolt Std. Mount	— 6S
SAE 6 Bolt Std. - Metric	— 6B
SAE 6 Bolt Deep - Metric	— 6C
SAE 6 Bolt Deep Mount	— 6D
SAE 6 Bolt Non-Std Mtg w/Dowel Pins - Met Studs (F84)	— 6F
SAE 6 Bolt Deep - Less Stud Kit	— 6K
SAE 6 Bolt Std. - Less Stud Kit	— 6L
SAE 6 Bolt Non-Std. Mtg. (Jatco)	— 6N
SAE 8 Bolt Std. Mount	— 8S
SAE 8 Bolt Std. - Metric	— 8B
SAE 8 Bolt Deep - Metric	— 8C
SAE 8 Bolt Deep Mount	— 8D
SAE 8 Bolt Deep - Less Stud Kit	— 8K
SAE 8 Bolt Std. - Less Stud Kit	— 8L

Transmission SH Gear Data

Fuller	10.1P 20°PA Spur	— F10
Fuller	10.1P 21.5°PA Spur	— F11
Fuller	6.1P 20.5° PA 29°LH	— F61
Fuller	6.35P 20° PA 22° LH	— F63
Fuller	6.65P 20° PA 21.5° LH	— F66
Fuller	8.38P 18°PA 33.1° LH	— F84
Fuller	8.55P 21°PA Spur	— F85
Mack	6.48P 17.5°PA Spur	— M65
Spicer	6P 17.5°PA 26.17° LH	— S60
Spicer	7P 17.5°PA 26.07° LH	— S70
Spicer	7P 17.5° PA 18°LH	— S71
Spicer	7P 22.5° PA 19°LH	— S73
Universal	6P or 6/8P 20°PA Spur	— S68
Universal	6P 20°PA Spur	— U60
Universal	6P or 6/8P 20°PA Spur	— U68

Special Features

- X — None
- P — Pressure Lube
- R — Pulse Gen./No Pres. Lube
- S — Pulse Gen./Pressure Lube

Output Types

- B — 1-1/4 Round 5/16 KW
- C — 1410 Companion Flange
- E — SAE "C" 2 & 4 Bolt
- G — Special
- I — DIN 5462
- K — SAE "B" 2 & 4 Bolt
- P — SAE "BB" 2 & 4 Bolt
- Q — SAE "A" 2 Bolt
- S — SAE "B" 2 Bolt
- T — 3/4 11 Spline
- Z — SAE "C" Shaft, SAE "B" Flange
- 2 — DIN Companion Flange

Assembly Arrangement

- 1 or 3

Shifter Type

- A — Manual Air
- E — Electric/Air (12 Volt)
- F — Electric/Air (24 Volt)
- M — Constant Mesh
- P — Manual Air (Less Installation Kit)

Speed Ratio

- 05 — .47:1 12 — 1.15:1
- 07 — .70:1 13 — 1.33:1
- 09 — .87:1 (8 Bolt Only)