

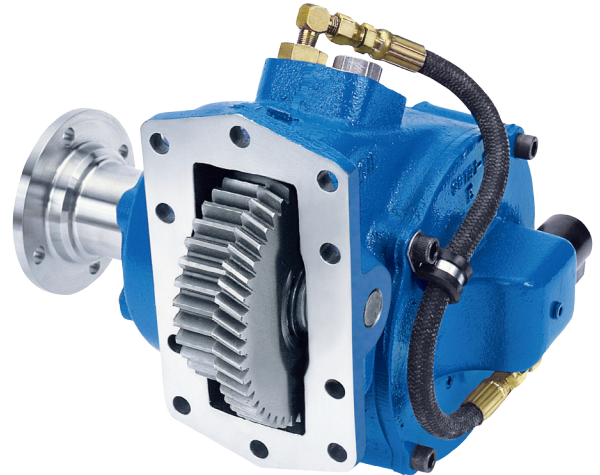
CS10/11 SERIES

CLUTCH SHIFT POWER TAKE-OFF



DESIGNED FOR HEAVY DUTY APPLICATIONS

Constructed with large gears, the CS10 Series power take-off is built for heavy duty applications. The CS10 features a drag brake and an output shaft designed around popular hydraulic pumps. For a more compact installation, the CS11 has a remotely mounted solenoid option.



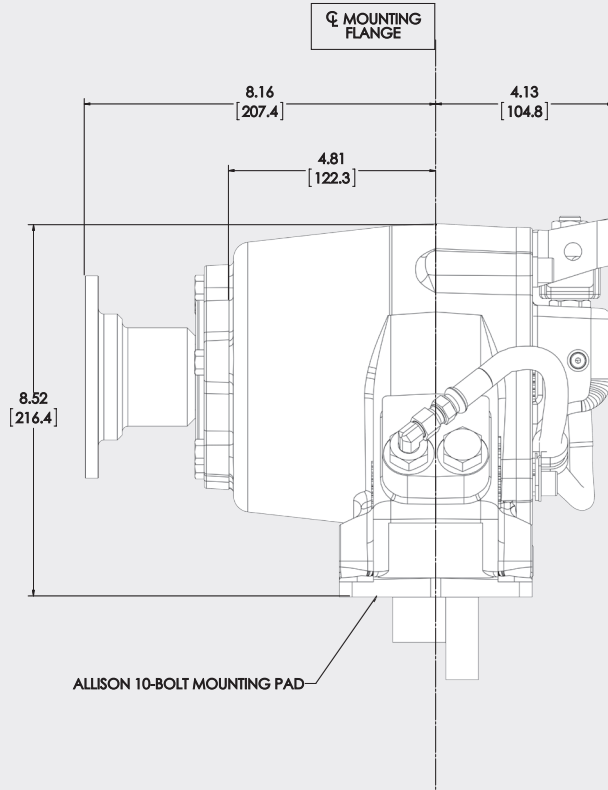
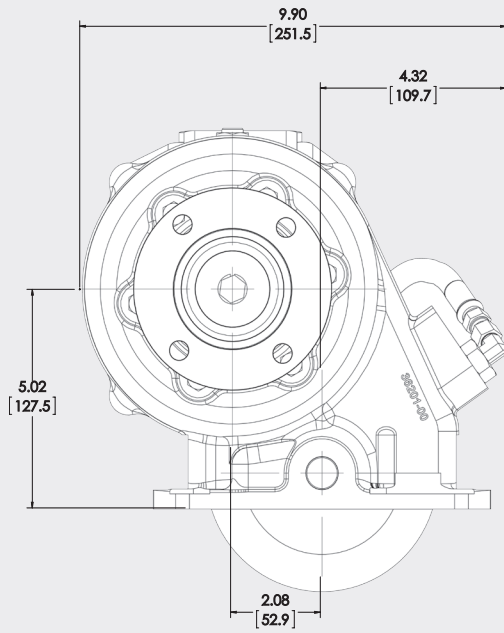
KEY FEATURES

- Three remote mount output shafts in both keyed and flange types: Versatility for remote pump drives
- S.A.E. "B", "BB", and "C"; DIN 5462 direct mount pump options: Fits most popular pumps
- Rotatable direct mount flanges: Allows pump to be positioned for maximum clearance
- Muncie drag brake prevents shaft rotation in the "OFF" mode
- Standard pressure lubrication: No extra cost
- Two assembly arrangements: Allows the PTO to be mounted shaft high or low on either side of the transmission

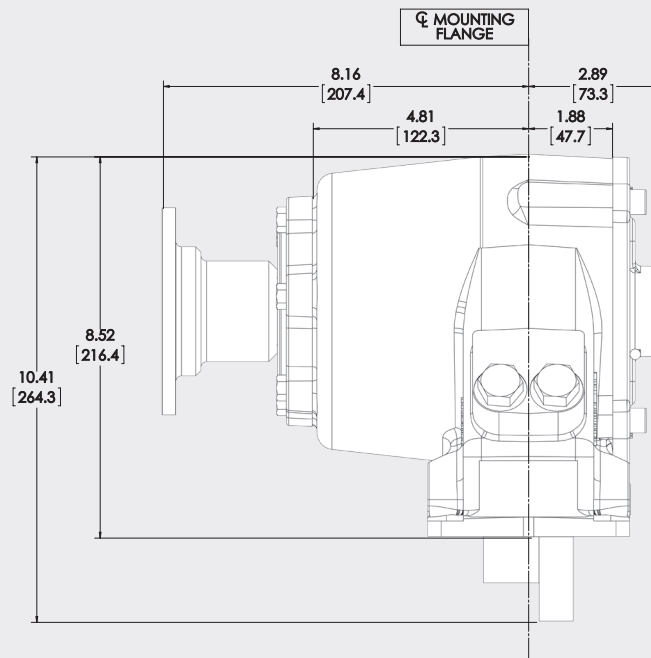
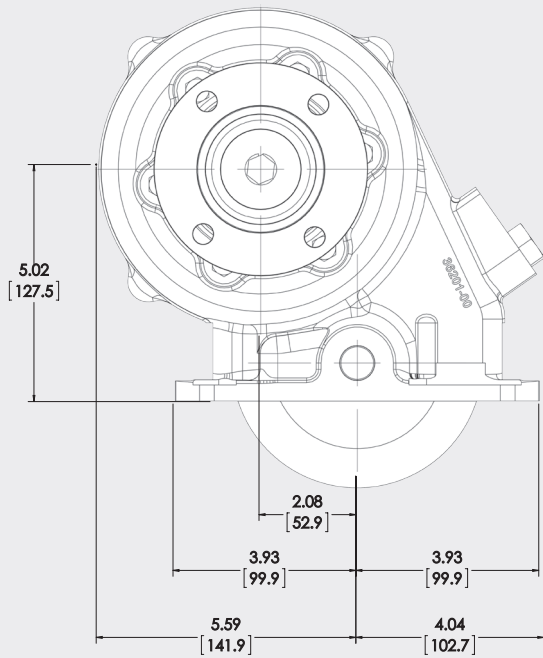
PTO TORQUE & HORSEPOWER RATINGS

| SPEED RATIO | INTERMITTENT HP@1000 RPM | INTERMITTENT TORQUE LBS.FT. | CONTINUOUS TORQUE LBS.FT. | INTERMITTENT [KW]@1000 RPM | INTERMITTENT TORQUE [NM] | CONTINUOUS TORQUE [NM] |
|-------------|--------------------------|-----------------------------|---------------------------|----------------------------|--------------------------|------------------------|
| 05 | 95 | 500 | 350 | [71] | [678] | [475] |
| 06 | 91 | 480 | 336 | [68] | [651] | [475] |
| 07 | 86 | 450 | 315 | [64] | [610] | [427] |
| 08 | 80 | 420 | 294 | [60] | [569] | [398] |
| 10 | 73 | 385 | 270 | [54] | [522] | [365] |

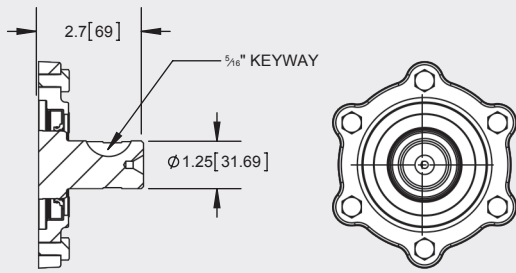
CS10 DIMENSIONS



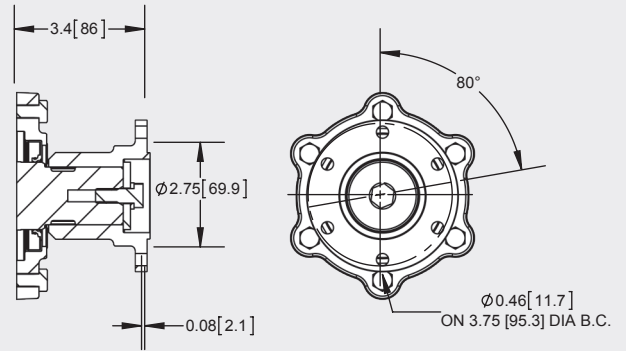
CS11 DIMENSIONS



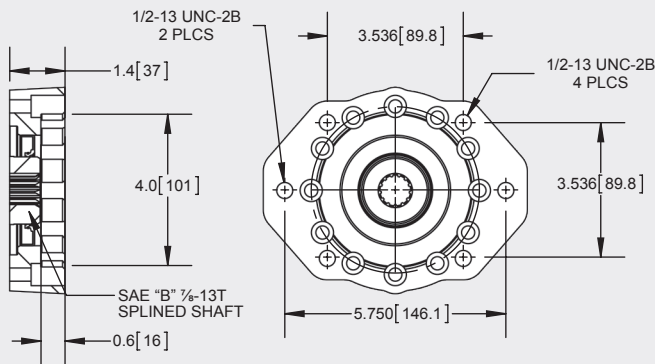
OUTPUT OPTIONS



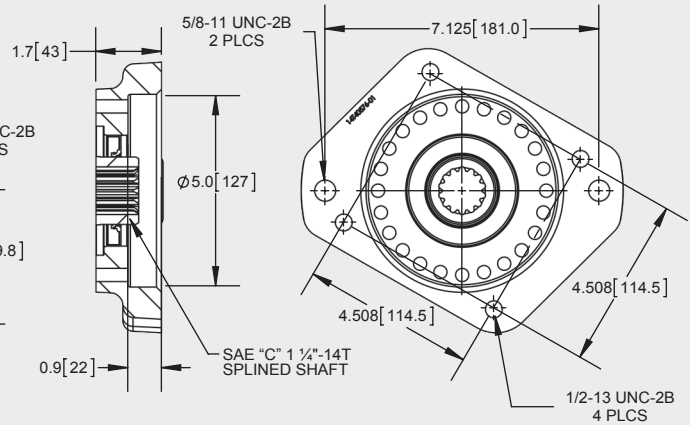
"B" OUTPUT - 1.25" RD SHAFT W/ 5/16" KEY



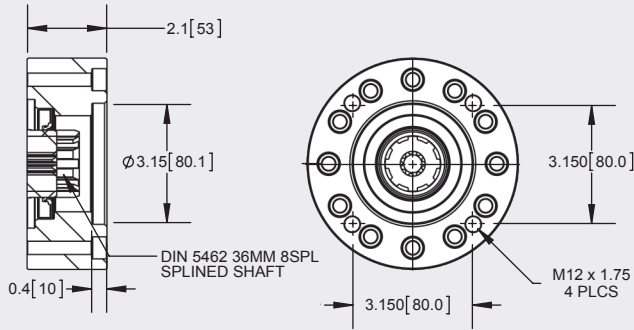
"C" OUTPUT - 1410 COMP FLANGE



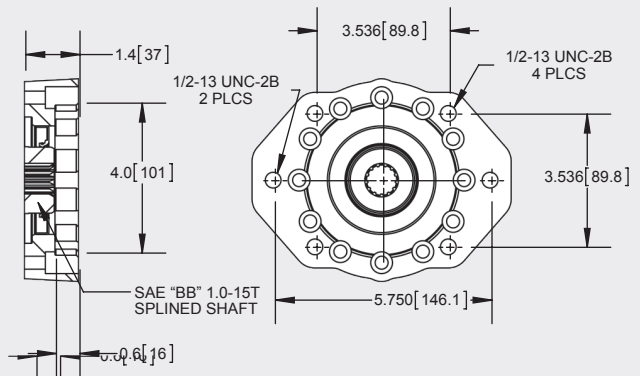
"D" OUTPUT - SAE "B" 2/4 BOLT



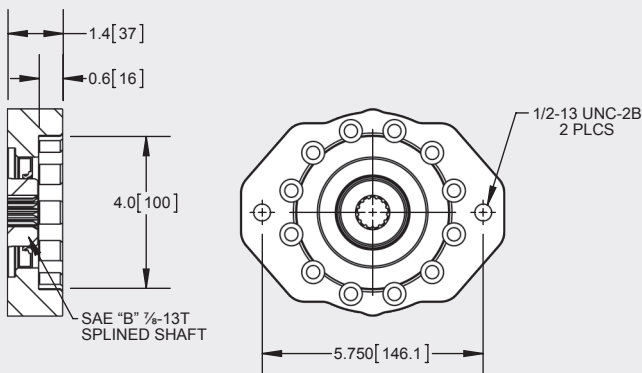
"E" OUTPUT - SAE "C" 2/4 BOLT



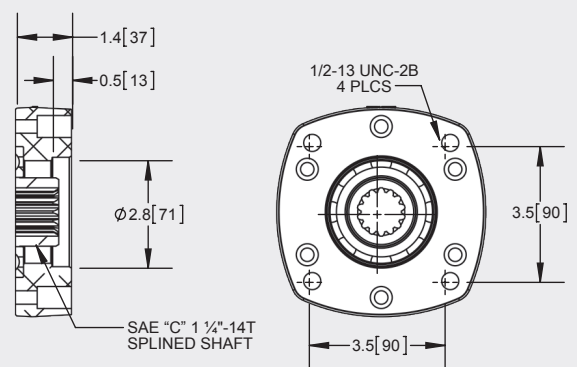
"I" OUTPUT - DIN 5462



"P" OUTPUT - SAE "B" 2/4 BOLT FLANGE
SAE "BB" 1"-15T SHAFT

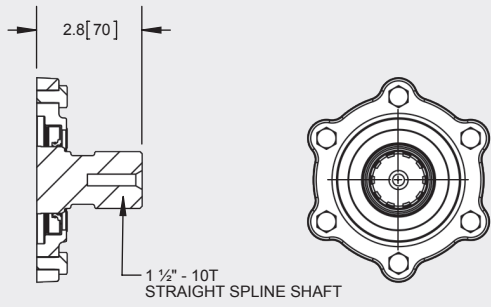


"S" OUTPUT - SAE "B" 2 BOLT

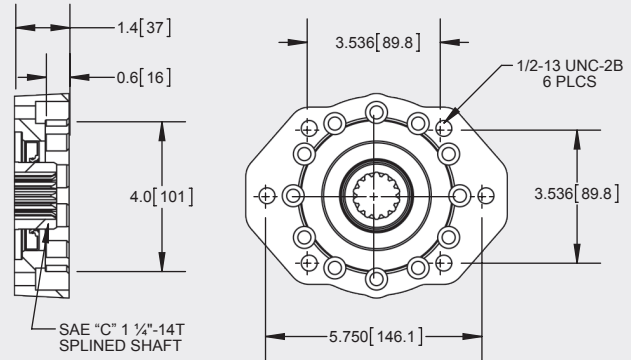


"V" OUTPUT - FOR MUNCIE EXTENDED SHAFT*
*Extended Shaft not included.

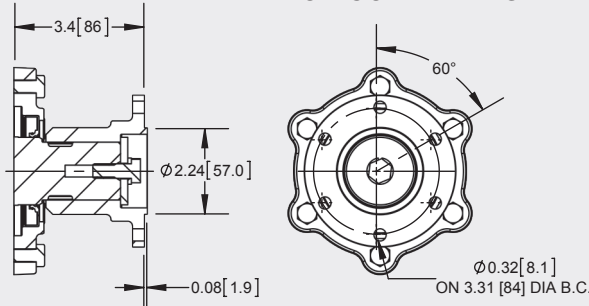
OUTPUT OPTIONS



“X” OUTPUT - 1 1/2"-10T SHAFT FOR COMP FLANGE



“Z” OUTPUT - SAE “B” 2/4 BOLT FLANGE SAE “C” 1 1/4"-14T SHAFT



“2” OUTPUT - DIN120 COMP FLANGE

MODEL NUMBER CONSTRUCTION

CS-10-A10-05 H-1-C-X

PTO Type

Clutch Shift — CS

Mounting

10 Bolt Mount — 10
10 Bolt Mount Remote Solenoid — 11

Transmission

Allison

Gear Data

10.16P RH — A10

Speed Ratio

05 — .57:1
06 — .64:1
07 — .72:1
08 — .85:1
10 — .95:1

Shifter Type

Electric/Hydraulic (12 Volt) — H
Electric/Hydraulic (24 Volt) — J

Special Features

- X — None
- B — Hose Kit (HD Trans. R.S.)
- D — Pulse Generator & SPD1001D
- U — Pulse Generator
- 3 — Lube Hose Optional Length — 17"
- 4 — Lube Hose Delete
(Pressure Lube and Activation Hose included on all units)

Output Types

- B — 1-1/4" Rd. 5/16KW
- C — 1410 Companion Flange
- D — SAE “B” 2 & 4 Bolt
- E — SAE “C” 2 & 4 Bolt
- I — DIN 5462
- P — SAE “BB” 2 & 4 Bolt
- S — SAE “B” 2 Bolt
- V — For Muncie Extended Shaft*
*Extended Shaft not included
- Y — SAE “C” 2 Bolt
- Z — SAE “C” Shaft, SAE “B” Flange
- 2 — DIN Companion Flange

Assembly Arrangement

- 1
- 3

