



LO-BOY

HOISTS

The proven Lo-Boy hoist is engineered for easy installation, ease of operation, safety and long service life. The Lo-Boy is designed with a far-forward lift point, providing easier load elevation and greater stability.

Six models are available with 5-27 ton lifting capacity.

- **8 to 24 foot bodies**
- **Low profile hoist** does not add height to the body
- **High pressure hydraulics** weigh less and are more efficient
- **Reduced Installation Time** - built-in body guides
- **Flexible Installation** - drop hinge design minimizes chassis frame interference



8'-14'



B-5 Bert

NTEA Class B

- Body Lengths: 8' to 14'
- Recommended CA: 60"-84"
- Available with single or double acting electric pumps or direct mount P.T.O driven gear pump
- Double Acting Cylinder: 4" Bore; 15¼" Stroke; 1½" diameter chrome shaft
- Operating Pressure: 3250 PSI
- Mounting Height: 61¼"
- Extended Maximum Lift Height: 61"
- Weight: 340 lbs

Body Length (ft)	Rear Overhang (in)	Hoist Capacity (in tons)
8	6	6.9
8	18	9.7
9	6	6.1
9	18	8.1
10	6	5.4
10	18	6.9
10	30	9.7
12	6	4.4
12	18	5.4
12	30	6.9
14	6	3.7
14	18	4.4
14	30	5.4

C-8 Charlie

NTEA Class C

- Body Lengths: 8' to 14'
- Recommended CA: 60"-84"
- Available with single or double acting electric pumps or direct mount P.T.O driven gear pump
- Double Acting Cylinder: 5" Bore; 15¼" Stroke; 2" diameter chrome shaft
- Operating Pressure: 3250 PSI
- Mounting Height: 7¾"
- Extended Maximum Lift Height: 61"
- Weight: 365 lbs

Body Length (ft)	Rear Overhang (in)	Hoist Capacity (in tons)
8	6	10.9
8	18	15.2
9	6	9.5
9	18	12.7
10	6	8.4
10	18	10.9
10	30	15.2
12	6	6.9
12	18	8.4
12	30	10.9
14	6	5.8
14	18	6.9
14	30	8.4

14'-21'



F-18 Floyd

NTEA Class F

- Body Lengths: 14' to 21'
- Recommended CA: 102"-156"
- Available with single or double acting electric pumps or direct mount P.T.O driven gear pump
- Double Acting Cylinder: 6" Bore; 297/16" Stroke; 2¼" diameter chrome shaft
- Operating Pressure: 3250 PSI
- Mounting Height: 8¾"
- Extended Maximum Lift Height: 105"
- Weight: 580 lbs

Body Length (ft)	Rear Overhang (in)	Hoist Capacity (in tons)
14	6	14.9
14	18	17.6
14	30	21.5
16	6	12.9
16	18	14.9
16	30	17.6
18	6	11.4
18	18	12.9
18	30	14.9
20	6	10.2
20	18	11.4
20	30	12.9
21	6	9.7
21	18	10.7
21	30	12.1

Standard

Exclusive Valve/Reservoir

Crysteel's exclusive reservoir mounted valve provides the flexibility and features your customers want. This system comes standard and is easy to install. Single or double acting electric pump packages are also available options.



Efficient Hydraulics

High-Pressure Hydraulics: Our high-pressure hydraulics deliver maximum efficiency. Our smaller pumps and cylinders weigh less but do more. That's why the aircraft industry uses high-pressure hydraulics exclusively. And it's why you'll get superior performance from your Crysteel hoist.



Body Length (ft)	Rear Overhang (in)	Hoist Capacity (in tons)
10	6	11.3
10	18	14.6
10	30	20.4
12	6	9.2
12	18	11.3
12	30	14.6
14	6	7.8
14	18	9.2
14	30	11.3
16	6	6.8
16	18	7.8
16	30	9.2

D-10 David

NTEA Class D

- Body Lengths: 10' to 16'
- Recommended CA: 84"-120"
- Available with single or double acting electric pumps or direct mount P.T.O driven gear pump
- Double Acting Cylinder: 5" Bore; 20¹/₁₆" Stroke; 2" diameter chrome shaft
- Operating Pressure: 3250 PSI
- Mounting Height: 7³/₈"
- Extended Maximum Lift Height: 76"
- Weight: 388 lbs

Body Length (ft)	Rear Overhang (in)	Hoist Capacity (in tons)
10	6	16.3
10	18	21
10	30	29.4
12	6	13.3
12	18	16.3
12	30	21
14	6	11.3
14	18	13.3
14	30	16.3
16	6	9.8
16	18	11.3
16	30	13.3

E-15 Ernie

NTEA Class E

- Body Lengths: 10' to 16'
- Recommended CA: 84"-120"
- Available with single or double acting electric pumps or direct mount P.T.O driven gear pump
- Double Acting Cylinder: 6" Bore; 20¹/₁₆" Stroke; 2" diameter chrome shaft
- Operating Pressure: 3250 PSI
- Mounting Height: 8"
- Extended Maximum Lift Height: 76"
- Weight: 430 lbs



10'-16'

Body Length (ft)	Rear Overhang (in)	Hoist Capacity (in tons)
16	6	19.6
16	18	22.6
16	30	26.8
18	6	17.3
18	18	19.6
18	30	22.6
20	6	15.5
20	18	17.3
20	30	19.6
21	6	14.7
21	18	16.3
21	30	18.4
22	18	15.4
22	30	17.2
24	30	15.4
24	42	17.2

ST-4000

NTEA Class H

- Body Lengths: 16' to 24'
- Available with direct mount P.T.O driven gear pump
- Double Acting Cylinder: 5" Bore; 27¹/₄" Stroke; 2.38" diameter chrome shaft
- Operating Pressure: 4000 PSI
- Mounting Height: 11¹/₂"
- Extended Maximum Lift Height: 98"
- Weight: 1070 lbs



16'-24'

Capacities based on water-level load, 45° dump angle and includes body weight.

Features

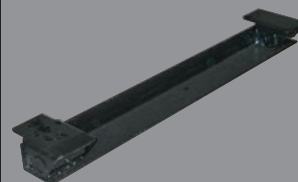
Premium Quality Cylinders

Crysteel cylinders are designed to last. That's because they're made from high-strength steel tubing and feature chromed shafts, close-tolerance pistons and high-pressure seals. Most include an internal cylinder bypass, which protects the system. Pressure is never more than is needed to lift the load, but full pressure is always available instantly.



Rear Hinge

Helps minimize chassis frame interference.



LO-BOY HOIST CAPACITY (IN TONS)

Body Length (ft)	Rear Overhang (in)	B-5 Bert	C-8 Charlie	D-10 David	E-15 Ernie	F-18 Floyd	ST-4000
8'	6"	6.9	10.9				
	18"	9.7	15.2				
9'	6"	6.1	9.5				
	18"	8.1	12.7				
10'	6"	5.4	8.4	11.3	16.3		
	18"	6.9	10.9	14.6	21.0		
	30"	9.7	15.2	20.4	29.4		
12'	6"	4.4	6.9	9.2	13.3		
	18"	5.4	8.4	11.3	16.3		
	30"	6.9	10.9	14.6	21.0		
14'	6"	3.7	5.8	7.8	11.3	14.9	
	18"	4.4	6.9	9.2	13.3	17.6	
	30"	5.4	8.4	11.3	16.3	21.5	
16'	6"			6.8	9.8	12.9	19.6
	18"			7.8	11.3	14.9	22.6
	30"			9.2	13.3	17.6	26.8
18'	6"					11.4	17.3
	18"					12.9	19.6
	30"					14.9	22.6
20'	6"					10.2	15.5
	18"					11.4	17.3
	30"					12.9	19.6
21'	6"					9.7	14.7
	18"					10.7	16.3
	30"					12.1	18.4
22'	18"						15.4
	30"						17.2
24'	30"						15.4
	42"						17.2

LO-BOY HOIST SPECIFICATIONS

NTEA Classification	B	C	D	E	F	H
Number of Cylinders	1	1	1	1	1	2
Double Acting (Power Down)	yes	yes	yes	yes	yes	yes
Cylinder Bore & Stroke (in.)	4 x 15¼	5 x 15¼	5 x 20 ¹ / ₁₆	6 x 20 ¹ / ₁₆	6 x 29 ⁷ / ₁₆	5 x 27¼
Chromed Cyl. Shaft Diameter (in.)	1½	2	2	2	2¼	2.38
Operating Pressure (PSI)	3250	3250	3250	3250	3250	4000
Recommended C.A. (in.)	60-84	60-84	84-120	84-120	102-156	
Recommended C.T. (in.)					90-144	120-181
Mounting Ht. above Truck Frame	6 ¹ / ₁₆	7 ³ / ₈	7 ³ / ₈	8	8¾	11½
Extended Max. Lift Height (in.)	61	61	76	76	105	98
Approximate Weight (lbs.)	340	365	388	430	580	1070

All specifications subject to change without notice.

Capacities based on water-level load, 45° dump angle, and includes body weight.

CAUTION: The combined weights of truck, body, hoist and load must not exceed the truck's Gross Vehicle Weight rating.



CRYSTEEL MANUFACTURING, INC.

Lake Crystal, MN • 1-800-533-0494 • FAX 507-726-2559
www.crysteel.com • E-mail sales@crysteel.com



Sold by:

Every body and hoist is backed by Crysteel's industry-leading **5-year Customer Satisfaction Pledge**. For more information on Crysteel's 5 Year Warranty, please ask your Crysteel Distributor or visit us at www.crysteel.com.

