



2018 Truck Equipment Snowplows & Spreaders

BOSSPLOW.COM

See how BOSS continues to BACK YOU UP.
Get more info, watch videos, find a dealer or chat live.

Call 800-286-4155
Email sales@bossplow.com



Ask your dealer or visit bossplow.com to explore the complete lineup of BOSS products, including Truck Equipment, ATV/UTV Equipment, Heavy Equipment, Ice Control Equipment and Accessories.



Exclusive to BOSS Owners, joining this community gives you a profile page, a free gift and access to special offers and information on BOSS products and services.



SnowCare for Troops is a nationwide outreach program that performs free snow removal for the families of men and women serving overseas and disabled veterans.



BOSS PRODUCTS
2010 THE BOSS WAY
P.O. BOX 787
IRON MOUNTAIN, MI 49801-0787

BOSS SNOWPLOW PRODUCTS
ARE DESIGNED AND MANUFACTURED IN
AN APPROVED ISO 9001:2015
REGISTERED FACILITY.

Patents: www.ttcopats.com
©2018 BOSS PRODUCTS. ALL RIGHTS RESERVED.
PRINTED IN U.S.A. FORM #SLS-TRK02018

Hardox is a registered trademark of SSAB Technology. The "T" logo is a registered trademark/service mark of Facebook, Inc. The Twitter logo is a registered trademark/service mark of Twitter, Inc. The YouTube logo is a trademark/service mark of Google LLC. The "G+" logo is a registered service mark of Google LLC. The "in" logo is a registered service mark of LinkedIn Corporation. The Instagram logo is a registered service mark of Instagram, LLC. The Blogger logo is a registered service mark of Google LLC. The National IPA logo is a service mark of the National Intergovernmental Purchasing Alliance Company. The Sourcewell logo is a service mark of National Joint Powers Alliance. The Advantage International Registrar logo is a trademark of Advantage International Registrar, Inc. All other trademarks belong to BOSS Snowplow.





2

3

Everything we do at BOSS comes back to one goal: giving snow and ice removal professionals everything they need to RESTORE ORDER when winter weather brings chaos. That's why we never stop pushing our designs, engineering and innovations to help make your job easier and more productive. Because at BOSS, our promise is that we will always be there to BACK YOU UP.

BOSS Products, a division of The Toro Company, reserves the right under its product improvement policy to change construction or design details and furnish equipment when so altered without reference to illustrations or specifications used herein.

TABLE OF CONTENTS

4 BOSS Innovations

6 DXT

8 XT

10 EXT

12 HTX

14 Standard-Duty

16 Super-Duty

18 Trip-Edge

20 Heavy-Duty

22 DRAG PRO™

24 VBX Hopper Spreaders

26 FORGE® Hopper Spreaders

28 TGS Tailgate Spreaders

30 Accessories

36 Specifications

INNOVATING FOR THE WAY YOU WORK

When winter is at its worst, the job calls for more than muscle, which is why BOSS engineers smart, tough, innovative solutions to make snow and ice removal fast, easy and efficient. With a variety of snow and ice control technologies and features to make your job more productive, BOSS has what today's professionals need to take on winter and RESTORE ORDER.



A NEW ERA IN PLOW LIGHTING
Plow in a whole new light with best-in-class, DOT-compliant, 100% LED lighting, integrated with Ice Shield Technology™ to prevent snow and ice build-up on the lens. Comes standard on all BOSS truck plows. (Excludes DRAG PRO™)



ATTACH WITH EASE
Attach your plow in just three easy steps with the easy-to-use Smart Hitch® 2 attachment system.



SUPERIOR CONTROL OPTIONS
Our high-tech, ergonomic controls feature large, backlit buttons for ease of use.



SMARTLIGHT™ 3 HEADLIGHT PACKAGE
The SL3 headlight package, standard on every BOSS truck plow, shines brighter and farther than traditional halogen packages, is DOT-compliant and is equipped with Ice Shield Technology™. (Excludes DRAG PRO™)

EXPANDING WINGS
Expand quickly at the touch of a button from 8' to 10'.

CHAINLESS LIFT SYSTEM
BOSS snowplows use a chainless, hydraulic lift system, which greatly reduces snowplow bounce and provides full float capability.

PITCHED-FORWARD WINGS
Move large amounts of snow with pitched, scooped-forward wings (EXT only).



MADE TO LAST
Delivers superior corrosion protection and a long-lasting, high-gloss shine.

PATENTED DUAL-TRIP TECHNOLOGY
Only the BOSS DXT combines trip-edge and full moldboard trip technology to maximize impact protection.

PATENTED SNOW CATCHER
A proven snow catcher in the center section on every BOSS V-plow ensures that no snow lines are left behind.

STRENGTH-TO-WEIGHT
BOSS designs maximum snowplow performance and strength in packages that are lighter than some competitive options, providing more truck applications.



D-FORCE® & BACKDRAG EDGE
D-Force® maintains consistent hydraulic down force through the use of a hydraulic accumulator. Available for select straight-blade truck plows. (Excludes EXT, Heavy-Duty, Trip-Edge and DRAG PRO™ plows.) Additionally, consider adding a backdrag edge to enhance your backdragging performance.

DRAG PRO™
The new BOSS DRAG PRO™ rear-plow allows you to pull snow from the back while driving, helping you double down on effectiveness with every turn. Pair with a BOSS V-plow, straight-blade or EXT plow for the ultimate expanding plow rig and a huge boost in productivity.

FLEET-FLEXIBLE UNDERCARRIAGE
Quickly and easily swap between snowplows in your BOSS fleet with the RT3 undercarriage.



HEAVY-DUTY TOP SCREEN

TARP WITH INTEGRATED TIE-DOWNS

POLY HOPPER
Built to outlast the elements.

TWO STANDARD VIBRATORS
(auger only)

DUAL WORKLIGHTS

REAR-MOUNTED LIGHT SWITCH

PINTLE CHAIN OR AUGER FEED SYSTEM
Features either a heavy-duty pintle chain or mild steel helical auger for long life and reliability.

REAR-MOUNTED DUMP SWITCH

SEALED MOTOR COMPARTMENT WITH 1/2 HORSEPOWER HIGH-TORQUE STAINLESS STEEL MOTOR

PRO-LID

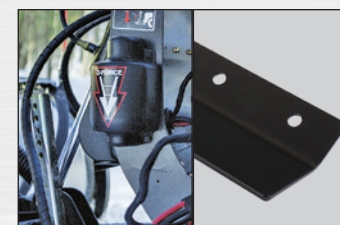
Weather-resistant, polyethylene hard cover protects deicing material inside the VBX spreader. The BOSS Pro-Lid® can be opened while remaining on the ground with most vehicles. Load must be level for proper operation. (Available as an accessory on VBX spreaders. Excludes VBX 3000.)

PRE-WET

Allows contractors to pre-wet solid deicing materials, improving the performance of solid deicing materials. Equipped with a 60-gallon tank capacity, this system is available as an option on all new VBX and FORGE® spreaders. (Excludes VBX 3000.)

*All images shown may include standard/optional equipment. Please consult your local BOSS Dealer for more information.

LEARN MORE ABOUT BOSS PRODUCTS
BOSSPLOW.COM



DXT

FULLY FEATURED AND FULLY TOUGH

BOSS DXTs are the ultimate tools to fight all things snow and ice. Dual-trip design enhances plow protection when striking obstacles in any position. Flared wings with an enhanced curl design throw snow with maximum efficiency. The DXT's multi-position plow blade can quickly and easily switch positions to move large amounts of snow. The smooth running DXT is state of the art for plowing protection, durability and performance.

STANDARD FEATURES:

- ▶ Steel 8'2", 9'2", 10'
Poly 8'2", 9'2"
- ▶ Stainless Steel 8'2", 9'2"

- ▶ **Patented Dual-Trip Design** enhances plow protection when striking hidden obstacles in any position.
- ▶ **SmartLight™ 3** uses 100% LED lights with an 8- to 10-year life expectancy and Ice Shield Technology™ to prevent snow and ice build-up.
- ▶ **Chainless Hydraulic Cylinder Lifting System** greatly reduces bounce during transport and provides full float capability.
- ▶ **½" x 6" Long-Lasting, Durable Base Angle** provides extended wear resistance and comes with built-in curb guards and patented snow catcher.
- ▶ **Flared Wings** with enhanced curl design throw snow with maximum efficiency.
- ▶ **Patented Snow Catcher** is designed to catch snow at the plow's pivot point, so no snow lines are left behind.
- ▶ **Reinforced Moldboard** increases blade rigidity for increased durability.
- ▶ **Heavy-Duty Push Frame and Center Section** provides additional strength and reliability.
- ▶ **High-Performance Hydraulic Package** delivers reliability and speed.
- ▶ **Enclosed Hydraulics** protect against corrosion and hydraulic freeze-up.
- ▶ **SmartLock® Cylinders** lock blades in place when backdrugging.

▶ SEE IT IN ACTION
BOSSPLOW.COM



- ▶ Nearly double the light output of standard halogen systems.
- ▶ Life expectancy of 8 to 10 years.
- ▶ Ice Shield Technology™ heats the lens to prevent ice build-up.
- ▶ Standard on all BOSS truck plows.
- ▶ DOT-compliant.

9'2" Steel DXT—also available in poly and stainless steel



*All images shown may include standard/optional equipment. Please consult your local BOSS Dealer for more information.



Patented dual-trip design combines trip-edge and full moldboard trip technologies on every DXT plow for protection from obstacles in any position, high or low.

THE POWER TO PERFORM

The BOSS XT's flared blade wings and enhanced curl design throw snow higher and farther than conventional plows. The poly XT is protected by a superslick polyethylene surface that keeps snow from sticking. To resist corrosion and outlast the elements, the steel XT has a baked-on, powder-coat paint finish with exclusive zinc primer. BOSS is pleased to introduce two stainless steel XT models, with the same features as the poly and steel models. The BOSS XT is a classic, proven innovation from BOSS that's built to BACK YOU UP.

Steel 7'6", 8'2", 9'2"
Poly 8'2", 9'2"

NEW!
Stainless Steel 8'2", 9'2"

STANDARD FEATURES:

- > **Full Moldboard Trip Design** helps to prevent plow damage when an obstacle is encountered.
- > **SmartLight™ 3** uses 100% LED lights with an 8- to 10-year life expectancy and Ice Shield Technology™ to prevent snow and ice build-up.
- > **Chainless Hydraulic Cylinder Lifting System** greatly reduces bounce during transport and provides full float capability.
- > **½" x 6" Cutting Edge** built using a Hardox® wear plate provides extended wear resistance and comes with built-in curb guards and patented snow catcher.
- > **Patented Snow Catcher** is designed to catch snow at the plow's pivot point, so no snow lines are left behind.
- > **Reinforced Moldboard** increases blade rigidity for increased durability.
- > **Heavy-Duty Push Frame and Center Section** provide additional strength and reliability.
- > **High-Performance Hydraulic Package** delivers reliability and speed.
- > **SmartLock® Cylinders** lock blades in place when backdragging.
- > **Enclosed Hydraulics** protect against corrosion and hydraulic freeze-up.

QUESTIONS? CHAT LIVE ONLINE.
[BOSSPLOW.COM](https://www.bossplov.com)

8'2" Poly XT—also available
in steel and stainless steel

*All images shown may include standard/optional equipment. Please consult your local BOSS Dealer for more information.



HARDOX®
WEAR PLATE

Hardox® cutting edge guarantees outstanding resistance to impact and extreme abrasion while delivering maximum service life and enhanced productivity.

SL3
ICE SHIELD TECHNOLOGY™

BOSS Smart Hitch 2

BOSS Smart Touch 2

SmartShield
BOSS

2
YEAR WARRANTY

EXT

EXPAND PARKING LOT PRODUCTIVITY

The EXT is a popular, new innovation from BOSS, with expandable wings that enhance productivity and efficiency to put winter in its place. It plows at 8 feet for tighter cuts and expands to 10 feet with pitched-forward wings for optimal productivity, making it the perfect parking lot plow. The EXT is a versatile and flexible addition to your fleet and another powerful tool in your plowing arsenal that's built to BACK YOU UP.

10

STANDARD FEATURES:

> Steel 8' Retracted, 10' Expanded With Pitched-Forward Wings

- > **Expandable, Fully Hydraulic, Pitched-Forward Wings** let you quickly and easily expand from 8' to 10' in width. A true 10' width combined with pitched-forward wings let the EXT take wider passes, carrying and moving more snow more efficiently.
- > **SmartLight™ 3** uses 100% LED lights with an 8- to 10-year life expectancy and Ice Shield Technology™ to prevent snow and ice build-up.
- > **Chainless Hydraulic Cylinder Lifting System** greatly reduces bounce during transport and provides full float capability.
- > **Standing Tall and Strong** at 30 inches high with nine vertical ribs, the EXT moves a high volume of snow with resilience.

- > **Reinforced Moldboard** increases blade rigidity for maximum durability.
- > **Heavy-Duty Push Frame and Push Frame Attachment Bar** provide additional strength and reliability.
- > **High-Performance Hydraulic Package** delivers reliability and speed.
- > **Enclosed Hydraulics** protects against corrosion and hydraulic freeze-up.

SEE HOW BOSS BACKS YOU UP
BOSSPLOW.COM



*All images shown may include standard/optional equipment. Please consult your local BOSS Dealer for more information.



> Easy-to-use controller



> 8' retracted



> 10' expanded



> Independent wing extension

HTX

FOR LIGHTER-DUTY TRUCKS WITH HEAVY WORKLOADS

Our full line of HTX plows brings all the power and innovation of BOSS full-size V-plows and straight-blades to your light-duty truck. With today's business owner and homeowner in mind, BOSS has engineered the HTX line for today's lighter-duty and half-ton trucks by designing just the right amount of steel in exactly the right place for the best combination of strength and weight. The precisely crafted, ultra-efficient HTX line is built to handle winter. Because when you need to RESTORE ORDER with your lighter-duty truck, BOSS is always there to BACK YOU UP.

12

*All images shown may include standard/optional equipment. Please consult your local BOSS Dealer for more information.

13

▶ Steel V-Plow 7'6" Poly, Steel Straight-Blade 7', 7'6"

▶ Stainless Steel Straight-Blade 7', 7'6"

STANDARD FEATURES:

SELECT THE RIGHT BOSS PLOW FOR YOUR TRUCK
BOSSPLOW.COM

D-Force® maintains consistent hydraulic down force through the use of a hydraulic accumulator to improve scraping performance while backdragging. D-Force® is an optional accessory on new truck plow purchases. Available for HTX straight-blade plows.



7'6" V-Plow Steel

7', 7'6" Stainless Steel

7', 7'6" Steel

- ▶ **Full Moldboard Trip Design** helps to prevent plow damage when an obstacle is encountered.
- ▶ **SmartLight™ 3** uses 100% LED lights with an 8- to 10-year life expectancy and Ice Shield Technology™ to prevent snow and ice build-up.
- ▶ **Chainless Hydraulic Cylinder Lifting System** greatly reduces bounce during transport and provides full float capability.
- ▶ **Strong, Durable Push Frame** is designed for additional strength and reliability.

- ▶ **High-Performance Hydraulic Package** delivers reliability and speed.
- ▶ **Enclosed Hydraulics** protect against corrosion and hydraulic freeze-up.
- ▶ **SmartLock® Cylinders** lock blades in place when backdragging (HTX V-plow only).



STANDARD-DUTY

THE TRIED AND TRUSTED STRAIGHT-BLADE

BOSS Standard-Duty straight-blade plows get the job done right. A baked-on, powder-coat paint finish with zinc primer resists corrosion. Heavy-duty push frame and push frame attachment bar, optimized blade curl and reinforced moldboard are standard on every BOSS straight-blade. These plows RESTORE ORDER with unsurpassed reliability and strength. The BOSS Standard-Duty is a tried, trusted, powerful tool from BOSS that's built to BACK YOU UP.

14

15

STANDARD FEATURES:

➤ Steel 7'6"

- **Full Moldboard Trip Design** helps to prevent plow damage when an obstacle is encountered.
- **SmartLight™ 3** uses 100% LED lights with an 8- to 10-year life expectancy and Ice Shield Technology™ to prevent snow and ice build-up.
- **Chainless Hydraulic Cylinder Lifting System** greatly reduces bounce during transport and provides full float capability.
- **Cast-Iron Plow Shoes** extend the life of the cutting edge.
- **Blade Shock Absorber** stabilizes and cushions the trip action.
- **Heavy-Duty Push Frame and Attachment Bar** provides additional strength and reliability.
- **High-Performance Hydraulic Package** delivers reliability and speed.
- **Enclosed Hydraulics** protect against corrosion and hydraulic freeze-up.

LEARN MORE ABOUT BOSS PRODUCTS
BOSSPLOW.COM

7'6" Standard-Duty



*All images shown may include standard/optional equipment. Please consult your local BOSS Dealer for more information.

D-Force® maintains consistent hydraulic down force through the use of a hydraulic accumulator to improve scraping performance while backdragging. D-Force® is an optional accessory on new Standard-Duty straight-blade plow purchases.



A BIGGER TAKE ON A CLASSIC

The bigger jobs call for the BOSS Super-Duty straight-blade. The durable steel blade features a baked-on, powder-coat paint finish with zinc primer to resist corrosion, and the superslick polyethylene moldboard of the poly blade prevents snow from sticking. The Super-Duty has everything you love about BOSS straight-blades with extra strength, making it a monster when it's time to RESTORE ORDER. It's another powerful tool from BOSS that's built to BACK YOU UP.

*All images shown may include standard/optional equipment. Please consult your local BOSS Dealer for more information.

D-Force® maintains consistent hydraulic down force through the use of a hydraulic accumulator to improve scraping performance while backdragging. D-Force® is an optional accessory on new Super-Duty straight-blade plow purchases.



SEE IT IN ACTION
BOSSPLOW.COM



8' Steel Super-Duty

- ▶ Steel 7'6", 8', 8'6", 9'
- ▶ Poly 7'6", 8'

STANDARD FEATURES:

- ▶ **Full Moldboard Trip Design** helps to prevent plow damage when an obstacle is encountered.
- ▶ **SmartLight™ 3** uses 100% LED lights with an 8- to 10-year life expectancy and Ice Shield Technology™ to prevent snow and ice build-up.
- ▶ **Chainless Hydraulic Cylinder Lifting System** greatly reduces bounce during transport and provides full float capability.
- ▶ **Cast-Iron Plow Shoes** extend the life of the cutting edge.
- ▶ **Blade Shock Absorber** stabilizes and cushions the trip action.
- ▶ **Reinforced Moldboard** increases blade rigidity for increased durability.
- ▶ **Heavy-Duty Push Frame and Attachment Bar** provide additional strength and reliability.
- ▶ **High-Performance Hydraulic Package** delivers reliability and speed.
- ▶ **Enclosed Hydraulics** protect against corrosion and hydraulic freeze-up.



ROLL WITH WINTER'S PUNCHES

BOSS Trip-Edge snowplows are engineered to power through the heaviest snow and any obstacles that come with it. The extra-rigid moldboard and trip-edge technology ensure that only the cutting edge trips when you hit an obstacle, so you won't lose the load you're pushing. Trip-Edge snowplows feature four adjustable trip return springs, so you can customize the trip spring tension for the job at hand. Available in steel and stainless steel for pickup truck applications, BOSS Trip-Edge snowplows are built to BACK YOU UP.

STANDARD FEATURES:

▶ Steel 7'6", 8', 9'

▶ Stainless Steel 8', 9'

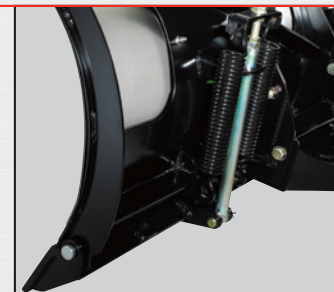
- ▶ **Trip-Edge Design** helps to prevent plow damage when an obstacle is encountered.
- ▶ **SmartLight™ 3** uses 100% LED lights with an 8- to 10-year life expectancy and Ice Shield Technology™ to prevent snow and ice build-up.
- ▶ **Chainless Hydraulic Cylinder Lifting System** greatly reduces bounce during transport and provides full float capability.
- ▶ **Adjustable Trip Springs** allow you to customize the trip spring tension.

- ▶ **Cast-Iron Plow Shoes** extend the life of the cutting edge.
- ▶ **Reinforced Moldboard** increases blade rigidity for increased durability.
- ▶ **Heavy-Duty Push Frame and Attachment Bar** provide additional strength and reliability.
- ▶ **Enclosed Hydraulics** protect against corrosion and hydraulic freeze-up.

QUESTIONS? CHAT LIVE ONLINE.
BOSSPLOW.COM

Adjustable Trip Springs

Trip-Edge



SL3
USA TECHNOLOGY
with Ice Shield Technology™

BOSS
Smart Hitch 2

BOSS
Smart Touch 2

Smart Shield
BOSS

2
YEAR WARRANTY

*All images shown may include standard/optional equipment. Please consult your local BOSS Dealer for more information.

WHEN WINTER HITS HARD, HIT BACK HARDER

Designed for medium-duty trucks, BOSS Heavy-Duty plows are available in straight-blade and DXT V-plow options. BOSS Heavy-Duty straight-blades feature a reinforced moldboard with enhanced blade curl design to power through deep, wet snow. The versatility of the dual-trip BOSS DXT allows you to scoop, stack and punch through hard-packed banks with power and performance. Both models come standard with the SL3 light system with Ice Shield Technology™ to handle every job, even in the worst conditions. Because when it's on you to RESTORE ORDER, BOSS is always there to BACK YOU UP.

➤ Steel Heavy-Duty Straight-Blade 9', 10'
Steel DXT 10'

STANDARD FEATURES:

SEE HOW BOSS BACKS YOU UP
BOSSPLOW.COM

- **Patented Dual-Trip Technology** on the DXT combines trip-edge and full moldboard trip technology to maximize impact protection.
- **SmartLight™ 3** uses 100% LED lights with an 8- to 10-year life expectancy and Ice Shield Technology™ to prevent snow and ice build-up.
- **Chainless Hydraulic Cylinder Lifting System** greatly reduces bounce during transport and provides full float capability.
- **½" x 6" Long-Lasting, Durable Base Angle** provides extended wear resistance and comes with built-in curb guards and patented snow catcher (DXT only).
- **Cast-Iron Plow Shoes** extend the life of the cutting edge (optional on 10' DXT).
- **Full Moldboard Trip Design** helps to prevent plow damage when an obstacle is encountered.
- **Dual Shock Absorbers** stabilize and cushion the trip action (straight-blade only).
- **Heavy-Duty Push Frame and Attachment Bar (Heavy-Duty) and Center Section (DXT)** are designed for additional strength and reliability.
- **Reinforced Moldboard** increases blade rigidity for increased durability.
- **High-Performance Hydraulic Package** delivers reliability and speed.
- **Enclosed Hydraulics** protect against corrosion and hydraulic freeze-up.

*All images shown may include standard/optional equipment. Please consult your local BOSS Dealer for more information.



10' Heavy-Duty
Straight-Blade Steel

10' DXT Steel

SL3
LED TECHNOLOGY
with Ice Shield Technology™

BOSS
Smart Hitch 2

BOSS
Smart Touch 2

SmartShield
BOSS



DRAG PRO™

TIME SAVED IS MONEY EARNED

The new BOSS DRAG PRO™ brings all the power and productivity of BOSS plows to the back of your truck. The DRAG PRO™ mounts from the rear, allowing you to pull snow from the back while driving. Back into driveways, drop the plow and pull forward, and you'll be well on your way to saving time and money. Plus, expand the wings to tackle more snow with each pass than ever before, all with a standard ¾-ton truck. The weight of the rear of the vehicle means the DRAG PRO™ scrapes more cleanly and efficiently than traditional plows, especially in wet snow. Pair with a BOSS V-plow, straight-blade or EXT plow for the ultimate expanding plow rig and a huge boost in productivity. It's an innovative, productivity-boosting tool from BOSS that's built to BACK YOU UP.



STANDARD FEATURES:

> 8' Fixed Wing, 8'-12' Hydraulic Folding Wing, 8'-16' Hydraulic Folding Wing

- > **Hydraulic Folding Wing Models** expand plow width from initial 8' to either 12' or 16'.
- > **Independent Wing Control** is featured on folding wing models with hydraulic relief protection.
- > **Low-Profile Coupler Design** allows for unobstructed tailgate use and visibility.
- > **Easily Attach/Detach** plow for quick operation on 4WD, ¾-ton and 1-ton trucks.

- > **High-Performance Hydraulic Package** delivers reliability and speed.
- > **Hydraulic Flow Control Valve** allows you to adjust the raise/lower speed.
- > **Steel Blade Cutting Edge** and urethane wing edges.
- > **Molded-In Urethane Snow Catchers** ensure no snow is left behind when plowing.

DRAG PRO™
8'-12' Retracted



*All images shown may include standard/optional equipment. Please consult your local BOSS Dealer for more information.

SEE IT IN ACTION
BOSSPLOW.COM





PRO-LID

Weather-resistant, polyethylene hard cover protects deicing material inside the VBX spreader. The BOSS Pro-Lid® can be opened while remaining on the ground with most vehicles. Load must be level for proper operation. (Available as an accessory on VBX spreaders. Excludes VBX 3000.)

VBX HOPPER SPREADERS

**MAXIMUM EFFICIENCY,
SPEED AND PRECISION**

BOSS hopper spreaders are some of the most powerful tools in your snow and ice removal arsenal. Our family of VBX spreaders are fully featured—outfitted with features some competitors consider “optional”—for ease of use and maximum productivity for years of operation in harsh winter conditions. The VBX family features models with both pintle and auger feeds, powerful electric motors, standard worklights, easy-to-use controls and the flexibility to spread a variety of deicing materials. BOSS builds quality and durability into every spreader, helping you to RESTORE ORDER.

➤ VBX 6500, VBX 8000, VBX 9000

STANDARD FEATURES:

- **Pintle Chain or Auger Feed System** features either a heavy-duty pintle chain or mild steel helical auger for long life and reliability.
 - **Poly Hopper** is built to outlast the elements.
 - **Dual Variable Speed Controller** is equipped with auto-reverse (auger only) and overload protection.
 - **LCD Screen In-Cab Controller** is backlit for clear visibility and ease of use.
 - **14.5" Diameter Urethane Spinner** is durable and corrosion-resistant and ensures consistent distribution.
 - **Enclosed Spinner Motor** is weather- and dust-sealed to ensure performance, durability and reliability.
 - **Tarp With Integrated Tie-Downs** protects spreading material from the elements.
 - **Dual Variable Speed Vibrators** prevent material bridging for ease of operation (standard for auger; optional for pintle).
 - **Inverted V-Baffle** reduces material build-up for optimal spreading efficiency (standard for auger; available as an accessory for pintle).
 - **Chain Cleaning Brush** removes excess material from chain on every pass (pintle chain only).
 - **Full-Length Slide-Out Tray** captures falling deicing material, keeping it away from truck bed, preventing corrosion (pintle chain only).
- ADDITIONAL ACCESSORIES**
- **Pre-Wet** allows contractors to pre-wet solid deicing materials, improving material performance. (Excludes VBX 3000.)
 - **Pro-Lid®** weather-resistant, polyethylene hard cover protects deicing materials. (Excludes VBX 3000.)

VBX 6500
1.5 cubic yards of capacity

VBX 8000
2 cubic yards of capacity

VBX 9000
3 cubic yards of capacity



*All images shown may include standard/optional equipment. Please consult your local BOSS Dealer for more information.

▶ SEE IT IN ACTION
BOSSPLOW.COM

The selection of proper deicing materials can be complex and varies by personal preference, experience and environmental concerns. All factors should be considered before making your selection.



FIGHT ICE WITH STEEL

The BOSS FORGE® lineup is expanding across all fronts. BOSS now brings the power of stainless steel ice control to even more vehicles with the addition of the FORGE® 1.0 and 1.5 to the FORGE® family. The FORGE® stainless steel hopper is constructed with a combination of bolting, riveting and welding for optimal durability and serviceability throughout the spreader's lifetime—allowing you to maintain and replace individual parts rather than the entire unit. Both the hopper and the drive train are constructed with stainless steel, enhancing the sturdiness and durability of FORGE® in adverse winter conditions. It's another example of tough, reliable innovations from BOSS that are built to BACK YOU UP.

STANDARD FEATURES:

FORGE® 1.0, 1.5, 2.0

- › **Pintle Chain or Auger Feed System** features either a heavy-duty pintle chain or mild steel helical auger for long life and reliability.
- › **Stainless Steel Hopper** is built to outlast the elements and is available in 1.0, 1.5 and 2.0 cubic yard capacity.
- › **Dual Variable Speed Controller** is equipped with auto-reverse and overload protection and is backlit for clear visibility and ease of use (auger only).
- › **14.5" Diameter Urethane Spinner** is durable, corrosion-resistant and ensures consistent distribution.
- › **Enclosed Spinner Motor** is weather- and dust-sealed to ensure performance, durability and reliability.
- › **Vibrator** prevents material bridging for ease of operation (standard for auger; optional for pintle).

- › **Inverted V-Baffle** reduces material build-up for optimal spreading efficiency (standard for auger; available as an accessory for pintle).
- › **Chain Cleaning Brush** removes excess material from chain on every pass (pintle chain only).
- › **Full-Length Slide-Out Tray** captures falling deicing material, keeping it away from truck bed, preventing corrosion (pintle chain only).

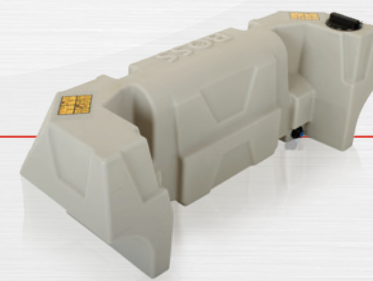
ADDITIONAL ACCESSORIES

- › **Pre-Wet** allows contractors to pre-wet solid deicing materials, improving material performance.
- › **For additional accessories, including the FORGE® light kit, tarp, vibrator (pintle), inverted V (pintle) and more, ask your BOSS Dealer.**

PRE-WET

Equipped with a 60-gallon tank capacity, this system is available as an option on all new VBX and FORGE® spreaders.

*All images shown may include standard/optional equipment. Please consult your local BOSS Dealer for more information.



FORGE® 1.5
1.5 cubic yards of capacity



FORGE® 2.0
2 cubic yards of capacity

The BOSS TGS series works with a variety of deicing materials to fit the job at hand. See the Spreader Materials Guide on Page 34 to learn more.

TGS TAILGATE SPREADERS

GET THE JOB DONE RIGHT, FAST

The TGS spreader series from BOSS is the easiest way to arm yourself against all things snow and ice. BOSS tailgate-mounted spreaders attach easily and disperse deicing materials quickly and efficiently to make your job as smooth and steady as possible. All TGS spreaders are built tough to handle harsh conditions, because BOSS knows the faster you can RESTORE ORDER to your community, the better.

TGS 300, TGS 600, TGS 800, TGS 1100

STANDARD FEATURES:

- > **Adjustable Feed Gate** allows you to adjust the material discharge amount (optional on TGS 300).
- > **Poly Adjustable Material Deflector** allows you to adjust the material discharge width and direction pattern.
- > **12" Diameter Urethane Spinner** is durable, corrosion-resistant and ensures consistent distribution.
- > **Enclosed 12-Volt Electric High-Torque Motor** is weather- and dust-sealed to ensure performance, durability and reliability.
- > **Low-Profile Poly Hopper Design** provides better visibility.
- > **Variable Speed Control** is equipped with blast feature and overload protection.
- > **Choose Your Attachment System** with a slide-in system or the RT3 system. (RT3 is not available on TGS 300.)
- > **Solid Poly Hopper Cover** protects against weather and is made to last.
- > **Stabilizer Arms and Tie-Down Straps** minimize any side-to-side movement. (Stabilizer arms are not available on TGS 300.)
- > **Top Screen With Bag Splitter** easily opens bags and filters deicing material. (Bag splitter is not included on TGS 300.)
- > **Enclosed Feed Motor** powers the feed paddle mechanism with 12 volts of high-torque electric power (TGS 800 only).
- > **Swing-Away Spinner Assembly** allows for quick removal of leftover material (TGS 800 only).
- > **Material Saver System** eliminates material flow of fine deicers when spreader is in transport. (Standard on TGS 300. Optional on the TGS 600 and TGS 1100. Not available on TGS 800.)
- > **Ask Your BOSS Dealer for Optional Accessories.**

28

29



TGS 1100 has a capacity of 11 cubic feet, or 800 lb.

TGS 800 has a capacity of 8 cubic feet, or 780 lb.

TGS 600 has a capacity of 6 cubic feet, or 400 lb.

TGS 300 has a capacity of 3 cubic feet, or 200 lb.



*All images shown may include standard/optional equipment. Please consult your local BOSS Dealer for more information.

Optional RT3 Attachment System allows you to easily attach and detach your spreader. (Not available on TGS 300.)



SEE IT IN ACTION
BOSSPLOW.COM

The selection of proper deicing materials can be complex and varies by personal preference, experience and environmental concerns. All factors should be considered before making your selection.

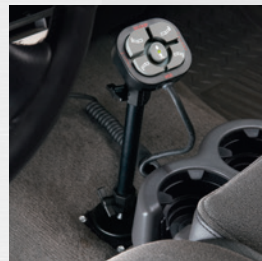


BOSS SNOWPLOW AUTHORIZED ACCESSORIES

CONTROL OPTIONS



Mount it on your dash (with or without handle).



Attach it to a pedestal mount.

JOYSTICK CONTROL

If you prefer the feel of a joystick, opt for this versatile accessory, featuring a lighted on/off switch and right- or left-hand adjustment.



STRAIGHT-BLADES.....	STB03191
V-PLOWS.....	MSC03809

SNOWPLOW SIGHT SYSTEM

Optional for all BOSS snowplows featuring the SmartLight™ 2 lighting system, our exclusive snowplow sight system allows you to align your truck and plow from inside your cab for hookups on the first try, every time. This system makes the fastest plow attachment system even faster and easier. Not compatible with SL3 with Ice Shield Technology.™



SNOWPLOW SIGHT SYSTEM.....	MSC09644
----------------------------	----------

D-FORCE® CONTROLLER

The new D-Force® controller is the same tried and trusted design of the BOSS SmartTouch® 2 controller, ensuring ease of operation during the longest winter events. The red center of the controller signifies D-Force® capability, allowing for increased down force to be applied during backdragging for optimal scraping performance. Available only with D-Force® capable straight-blade truck plow models including Super-Duty, Standard-Duty and HTX straight-blade plows. (Excludes EXT, Heavy-Duty and Trip-Edge plows.)



D-FORCE® CONTROLLER.....	STB10160
--------------------------	----------

BACKDRAG EDGE

Improved scraping performance when backdragging. Available accessory on select straight-blade and V-plow models. (Excludes 10' Heavy-Duty, EXT, Trip-Edge and DXT plows.)

V-PLOW	
7'6" BACKDRAG EDGE V-PLOW.....	MSC06584
8'2" BACKDRAG EDGE V-PLOW.....	MSC06585
9'2" BACKDRAG EDGE V-PLOW.....	MSC06586

STRAIGHT-BLADE	
7'0" BACKDRAG EDGE STRAIGHT-BLADE.....	STB06534
7'6" BACKDRAG EDGE STRAIGHT-BLADE.....	STB06535
8'0" BACKDRAG EDGE STRAIGHT-BLADE.....	STB06536
8'6" BACKDRAG EDGE STRAIGHT-BLADE.....	STB06537
9'0" BACKDRAG EDGE STRAIGHT-BLADE.....	STB06538

BLADE ENHANCEMENT

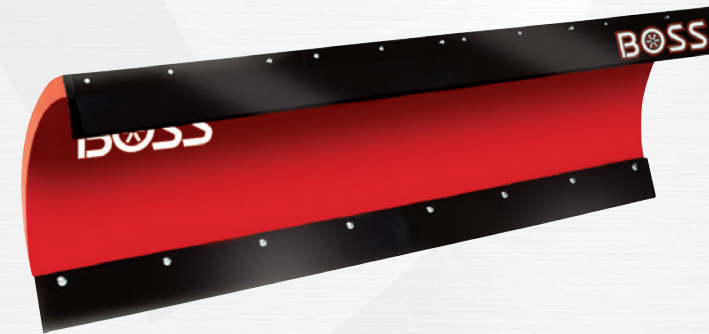


PLOW WINGS

Increasing your blade width by a full 22" at a 30-degree angle, these convenient plow wings will cut your plowing time and attach and detach within seconds. (Excludes HTX and Heavy-Duty plows.) Available in poly and stainless steel.

POLY STRAIGHT-BLADE.....	MSC08042C
POLY XT AND DXT PLOWS.....	MSC08063B
STAINLESS STEEL XT AND DXT PLOWS.....	MSC08110

(Excludes HTX plows and Heavy-Duty plows. The only DXT models recommended for plow wing extensions are the 8'2" steel DXT and 8'2" poly DXT. Wing extensions do not fit other DXT sizes and do not void the warranty but are not recommended, as the blade may sag when in the scoop position, due to the weight of the wing extensions.)



RUBBER SNOW DEFLECTOR

For increased visibility and safety, keep snow from blowing onto your windshield with a rugged snow deflector specifically designed for BOSS snowplows.

7' AND 7'6" HTX AND 7'6" STANDARD-DUTY STRAIGHT-BLADE PLOWS.....	MSC04587B
7'6"-9'2" V-PLOWS, 7'6"-9'0" SUPER-DUTY AND 9' HEAVY-DUTY STRAIGHT-BLADE PLOWS.....	MSC01565
10' DXT, EXT AND 10' HEAVY-DUTY STRAIGHT-BLADE PLOWS.....	MSC17611B



D-FORCE®

D-Force® maintains consistent hydraulic down force through the use of a hydraulic accumulator to improve scraping performance while backdragging. D-Force® is an optional accessory on new truck plow purchases. Available for select straight-blade truck plow models including Super-Duty, Standard-Duty and HTX straight-blade plows. (Excludes EXT, Heavy-Duty, Trip-Edge and DRAG PRO™ plows.)

SUPER-DUTY AND STANDARD-DUTY D-FORCE® PLOW BOX.....	STB15025
HTX D-FORCE® PLOW BOX.....	STB15035

(D-Force® needs to be purchased at the same time as a new plow. You are not able to add D-Force® to your plow after purchase.)



URETHANE CUTTING EDGES

BOSS now offers urethane cutting edges to cover a wide range of straight-blade and V-plow models. Ranging from 7' all the way up to 10', the edges offer optimum scraping performance. The V-plow cutting edges feature built-in curb guards and a patented snow catcher.

V-PLOW	
7'6" XT.....	MSC18237
8'2" XT.....	MSC18238
9'2" XT.....	MSC18239

STRAIGHT-BLADE	
7' HTX STRAIGHT-BLADE.....	STB09231
7'6" HTX STRAIGHT-BLADE.....	STB09232
7'6" STD AND SUPER-DUTY STRAIGHT-BLADE.....	STB09233
8' SUPER-DUTY STRAIGHT-BLADE.....	STB09234
8'6" SUPER-DUTY STRAIGHT-BLADE.....	STB09235
9' SUPER-DUTY STRAIGHT-BLADE.....	STB09236
10' HEAVY-DUTY STRAIGHT-BLADE.....	STB09237

BLADE ENHANCEMENT

CURB GUARDS

Protect the edges of your plow with these long-lasting, high-impact curb guards. Fits BOSS straight-blade snowplow models. (Excludes HTX, EXT and DRAG PRO™)

STRAIGHT-BLADE DRIVER SIDE.....	STB03395
STRAIGHT-BLADE PASSENGER SIDE.....	STB03394
STRAIGHT-BLADE HEAVY-DUTY DRIVER SIDE.....	STB05066
STRAIGHT-BLADE HEAVY-DUTY PASSENGER SIDE.....	STB05065

STABILITY AND PERFORMANCE



SMARTLOCK® CYLINDERS

Keep your V-plow locked securely in the straight position while backdragging, with these easy-to-install locking cylinders.



PRE-2006 V-PLOWS	HYD07130
2006 & NEWER V-PLOWS	HYD09733
2006 & NEWER 10' V-PLOWS AND 10' DXT PLOWS.....	HYD09386



REPLACEMENT BUMPER TRIM KIT

This kit eliminates the need to cut or modify a portion of the OEM bumper to access the push beam's hooks. The kits utilize the factory mounting holes and give the plow vehicle an attractive, finished OEM look when installed. If the truck is going to be sold, the original bumper piece can be reinstalled to look like new.

BUMPER TRIM KIT, 2014-2015 CHEVY 1500.....	MSC09409
BUMPER TRIM KIT, 2015 + CHEVY 2500/3500	MSC09279
BUMPER TRIM KIT, 2014-2015 GMC 1500	MSC09290
BUMPER TRIM KIT, 2015 + GMC 2500/3500	MSC09295
BUMPER TRIM KIT, 2016 + GMC 1500	MSC18870
BUMPER TRIM KIT, 2016 + CHEVY 1500.....	MSC18880

MAINTENANCE



TOUCH-UP PAINT

Cover chips and scrapes the professional way with BOSS touch-up paint.

RED, SPRAY PAINT	MSC04098
BLACK, SPRAY PAINT	MSC04036
RED, QUART	MSC04358

HIGH-PERFORMANCE HYDRAULIC FLUID

This specially formulated hydraulic fluid maintains its viscosity from normal use to temperatures as low as -40°F.

GALLON	HYD01836
QUART	HYD01835

ICE CONTROL

PRE-WET SYSTEM

Equipped with a 60-gallon tank and mounting bracket.

PRE-WET SYSTEM.....	MSC20100
---------------------	----------



LIGHT KIT

LIGHT KIT, FORGE® 1.0, 1.5, 2.0.....	MSC19525
--------------------------------------	----------

INVERTED V

(Optional on pintle. Standard on auger systems.)

INVERTED V, FORGE® 1.0	VBS19550
INVERTED V, FORGE® 1.5, 2.0	VBS17180
INVERTED V, VBX 6500.....	VBS15140
INVERTED V, VBX 8000 AND VBX 9000	VBS15320



BACKUP CAMERA

The spreader backup camera has a 150° viewing angle, 20G vibration rating and IP68 waterproof rating. It is equipped with infrared lights that allow for 50 feet of vision at night as well as a 7" LCD color monitor with backlit buttons.

SPREADER BACKUP CAMERA	MSC21970
------------------------------	----------



EMERGENCY PARTS KITS

These kits feature the most useful replacement parts, packaged in a convenient soft-sided case that fits easily behind the seat of your truck. (Excludes 10' DXT, EXT and Heavy-Duty straight-blades.)

V-PLOW EMERGENCY PARTS KIT	MSC04298
STRAIGHT-BLADE EMERGENCY PARTS KIT	STB16187

PLOW TERMINAL CLEANER KIT

The BOSS terminal cleaner kit cleans and restores male and female electrical plow connectors. It includes a 0.188" male/female terminal cleaner, a 0.25" male/female terminal cleaner and leather-type holster.

PLOW TERMINAL CLEANER KIT	MSC05220
---------------------------------	----------

PRO-LID®

Weather-resistant, polyethylene hard cover protects deicing material inside the BOSS spreader. The easy-open, ergonomic design allows operators to remain on the ground while opening cover doors. Load must be level for proper operation.



VBX 6500 PRO-LID® W/ HARDWARE	VBS15125
VBX 8000 PRO-LID® W/ HARDWARE	VBS15130
VBX 9000 PRO-LID® W/ HARDWARE	VBS15135

TARP

TARP, FORGE® 1.0.....	VBS19540
TARP, FORGE® 1.5, 2.0.....	VBS17190

HOPPER VIBRATOR KIT

For improved material flow and handling. (Optional on pintle. Standard on auger systems.)

SINGLE VIBRATOR KIT (FORGE®).....	VBS14465
DOUBLE VIBRATOR KIT (VBX).....	VBS14466

TGS VIBRATOR KIT

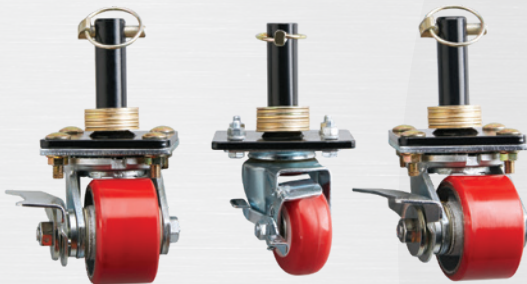
For improved material flow and handling, consider the addition of the TGS vibrator kit. (Not recommended for TGS 300.)

TGS VIBRATOR KIT	TGS05960
------------------------	----------

MATERIAL SAVER SYSTEM

Standard on TGS 300.

MATERIAL SAVER SYSTEM	TGS11328
-----------------------------	----------



32

V-Blade Caster Wheel Kit*

CASTER WHEELS

Ideal for moving your plow around in the garage or service bay, these wheels utilize existing shoe holders on the blade and make moving the plow a breeze. These heavy-duty wheels feature steel ball bearings for smooth movement and long-lasting life. Separate kits are available for straight-blades and V-plows. (Excludes Trip-Edge straight-blade, 10' DXT and Heavy-Duty straight-blade plows.)

CASTER KIT, STRAIGHT-BLADE	MSC09215
CASTER KIT, V-PLOW (INCLUDES XT).....	MSC09216
CASTER KIT, HTX (COVERS 7", 7"6").....	MSC09249
CASTER KIT, DXT	MSC01141
CASTER KIT, HTX-V	MSC09235

*Wheel color may vary.



Trip-Edge Shoe Kit

CAST-IRON PLOW SHOES

These ultra-rugged, cast-iron shoes deliver extended wear resistance compared to conventional steel shoes.

(1) PLOW SHOE WITHOUT HARDWARE.....	MSC01570
HTX PLOW SHOE BRACKET OPTION KIT (SHOES INCLUDED).....	MSC09588
TRIP-EDGE PLOW SHOE ASSEMBLY	TRP07880
DXT PLOW SHOE BRACKET OPTION KIT (SHOES INCLUDED).....	MSC18184

*DXT and HTX blades now include plow shoe brackets as standard. Shoes sold separately.

LIGHTING OPTIONS



SL3 WITH ICE SHIELD TECHNOLOGY™

SL3 UPGRADE KIT	MSC16200
SMARTLIGHT™ 1 TO SL3 UPGRADE KIT	MSC18860
SMARTLIGHT™ 2 TO SL3 UPGRADE KIT	MSC19050

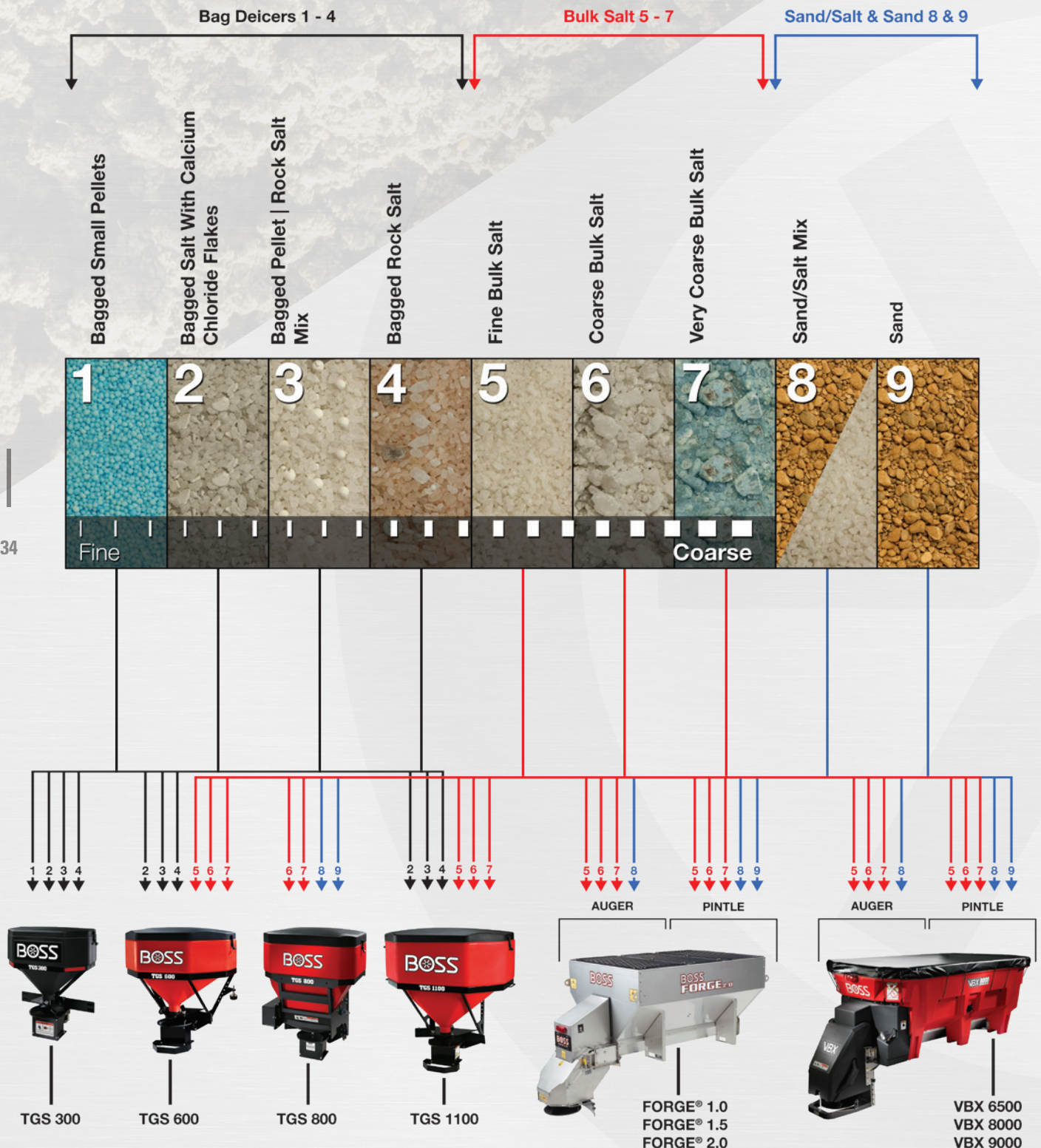
SHOVELS

SCOOP AND PUSHER SHOVELS

BOSS has joined forces with the leaders in high-performance, contractor-grade snow shovels! These tough, durable, high-performance shovels are built for the abuse of the season with premium blade material for unmatched scraping ability. See your local BOSS Dealer for purchase.



MATERIALS GUIDE



NOTE: Assumes Dry, Free-Flowing Material

WHAT YOU GET WHEN YOU BUY A BOSS PLOW*



- 1 + BLADE**
 Steel, stainless, poly—whichever you choose, it's durable and reliable.
- 2 + SMARTLIGHT™ 3**
 SL3 100% LED lights with Ice Shield Technology™ are DOT-compliant and prevent snow and ice build-up.
- 3 + PUSH FRAME/COUPLER**
 The powerful reinforced steel framework behind your plow.
- 4 + UNDERCARRIAGE**
 Serves as the connection point from the plow to the truck.
- 5 + HYDRAULICS & CONTROLLER**
 An intuitive, easy-to-use system completely protected from the elements.
- 6 + ATTACHMENT SYSTEM**
 A three-step, fully hydraulic system for quick and easy attachment.
- 7 + CUTTING EDGE OR BASE ANGLE**
 A durable cutting edge designed for precision and performance. On DXT models, the base angle serves as a cutting edge until worn.
- 8 + WORLD-CLASS SUPPORT**
 From our dealer network and factory customer support to our Owners Group, BOSS is there to BACK YOU UP.

*The above equipment applies to brand-new truck plow purchases that require all components.

PROFESSIONAL-USE PLOWS

DXT

VEHICLE APPLICATION: 4WD, ¾- AND 1-TON TRUCKS, MEDIUM-DUTY TRUCKS 14,000-27,000 GVWR (10' ONLY)



Specifications	8'2" DXT Steel / Poly / Stainless	9'2" DXT Steel / Poly / Stainless	10' DXT Steel Heavy-Duty
Blade Width (Straight) Curb Guard Width*	98" (249 cm) 101" (256.5 cm)	110" (279 cm) 113" (287 cm)	120" (305 cm) 123.75" (314.3 cm)
Blade Width (V Position) Curb Guard Width*	88" (224 cm) 88" (224 cm)	99" (251 cm) 94.4" (239.8 cm)	107" (272 cm) 108" (274.3 cm)
Blade Width (Scoop) Curb Guard Width*	81" (206 cm) 92.9" (235.9 cm)	92" (234 cm) 103.3" (262.4 cm)	102" (259 cm) 111.1" (282.2 cm)
Plowing Width @ 30° Angle	85" (216 cm)	95" (241 cm)	104" (264 cm)
Blade Height	30" (76 cm) at center; 37½" (95 cm) at ends	30" (76 cm) at center; 37½" (95 cm) at ends	35" (89 cm) at center; 45" (114 cm) at ends
Blade Thickness	11-ga steel / ¾" (0.95 cm) poly / 14-ga stainless steel	11-ga steel / ¾" (0.95 cm) poly / 14-ga stainless steel	11-ga steel
Base Angle	½" x 6" (1.3 cm x 15 cm)***	½" x 6" (1.3 cm x 15 cm)***	½" x 6" (1.3 cm x 15 cm)
Reinforcement Ribs	6 vertical, 2 diagonal	8 vertical, 2 diagonal	8 vertical, 2 diagonal
Plow Shoes	Optional	Optional	Optional
Trip Springs (Moldboard)	4 extension springs	4 extension springs	4 extension springs
Trip Springs (Base Angle)	6 total	6 total	6 total
SmartLock® Cylinders	1½" x 10" (4 cm x 25 cm)	1½" x 10" (4 cm x 25 cm)	2" x 10" (5.1 cm x 25 cm)
Lift Cylinder	2" x 1½" x 10" (5 cm x 3 cm x 25 cm)	2" x 1½" x 10" (5 cm x 3 cm x 25 cm)	2¼" x 1½" x 12" (5.8 cm x 2.9 cm x 30.5 cm)
Attachment System	SmartHitch® 2	SmartHitch® 2	SmartHitch® 2
Plow Weight**	868 lb ^a (394 kg) / 878 lb ^a (398 kg) / 920 lb ^a (417 kg)	925 lb ^a (420 kg) / 935 lb ^a (424 kg) / 977 lb ^a (443 kg)	1,205 lb ^a (547 kg)
Plow Lights	SL3 LED with Ice Shield Technology™	SL3 LED with Ice Shield Technology™	SL3 LED with Ice Shield Technology™

*Maximum product width. **Plow weight does not include vehicle mount weight. ^aVehicle mount weight range: 130-160 lb (59-73 kg).
 ***The tripping base angles on the DXT come standard with curb guards and patented snow catcher, and they can be used as the cutting edge until worn. The optional cutting edge is made from Hardox® for maximum wear resistance and durability.



XT

VEHICLE APPLICATION: 4WD, ¾- AND 1-TON TRUCKS

Specifications	7'6" XT Steel	8'2" XT Steel / Poly / Stainless	9'2" XT Steel / Poly / Stainless***
Blade Width (Straight) Curb Guard Width*	90" (229 cm) 93.75" (238.1 cm)	98" (249 cm) 101.75" (258.5 cm)	110" (279 cm) 113.75" (288.9 cm)
Plowing Width (V Position) Curb Guard Width*	81" (206 cm) 82.5" (209.6 cm)	88" (224 cm) 89.5" (227.3 cm)	99" (252 cm) 99.9" (253.8 cm)
Plowing Width (Scoop) Curb Guard Width*	74" (188 cm) 86.1" (218.7 cm)	81" (206 cm) 93" (236.2 cm)	92" (234 cm) 103.4" (262.6 cm)
Plowing Width @ 30° Angle	77" (196 cm)	85" (216 cm)	95" (241 cm)
Blade Height	30" (76 cm) at center; 36" (91 cm) at ends	30" (76 cm) at center; 37½" (95 cm) at ends	30" (76 cm) at center; 37½" (95 cm) at ends
Blade Thickness	14-ga steel	11-ga steel / ¾" (0.95 cm) poly / 14-ga stainless steel	11-ga steel / ¾" (0.95 cm) poly / 14-ga stainless steel
Cutting Edge (AR450)	½" x 6" (1.3 cm x 15 cm)	½" x 6" (1.3 cm x 15 cm)	½" x 6" (1.3 cm x 15 cm)
Reinforcement Ribs	6 vertical, 2 diagonal	6 vertical, 2 diagonal	8 vertical, 2 diagonal
Plow Shoes	Optional	Optional	Optional
Trip Springs	4	4	4
SmartLock® Cylinders	1½" x 10" (4 cm x 25 cm)	1½" x 10" (4 cm x 25 cm)	1½" x 10" (4 cm x 25 cm)
Lift Cylinder	2" x 1½" x 10" (5 cm x 3 cm x 25 cm)	2" x 1½" x 10" (5 cm x 3 cm x 25 cm)	2" x 1½" x 10" (5 cm x 3 cm x 25 cm)
Attachment System	SmartHitch® 2	SmartHitch® 2	SmartHitch® 2
Plow Weight**	713 lb ^b (323 kg)	785 lb ^b (356 kg) / 795 lb ^b (361 kg) / 823 lb ^b (374 kg)	842 lb ^b (382 kg) / 852 lb ^b (387 kg) / 882 lb ^b (400 kg)
Plow Lights	SL3 LED with Ice Shield Technology™	SL3 LED with Ice Shield Technology™	SL3 LED with Ice Shield Technology™

*Maximum product width. **Plow weight does not include vehicle mount weight. ^bVehicle mount weight range: 75-105 lb (34-48 kg). ***Includes 1-ton trucks with dual rear wheels.

PERSONAL-USE PLOWS

HTX V-BLADES AND STRAIGHT-BLADES

VEHICLE APPLICATION: LIGHT-DUTY, 4WD, ½-TON TRUCKS AND SUVs



Specifications	7'6" HTX V-Plow Steel	7' HTX Straight Steel / Poly / Stainless	7'6" HTX Straight Steel / Poly / Stainless
Blade Width (Straight) Curb Guard Width*	90" (229 cm) 94.2" (239.3 cm)	84" (213 cm) N/A	90" (229 cm) N/A
Plowing Width (V Position) Curb Guard Width*	81" (206 cm) 82.75" (210.2 cm)	N/A	N/A
Plowing Width (Scoop) Curb Guard Width*	74" (188 cm) 86.75" (220.4 cm)	N/A	N/A
Plowing Width @ 30° Angle	78" (198 cm)	73" (185 cm)	78" (198 cm)
Blade Height	32" (81 cm) at end; 25" (64 cm) at center	26" (66 cm)	26" (66 cm)
Blade Thickness	14-ga steel	14-ga (0.19 cm) steel / ¾" (0.6 cm) poly / 14-ga (0.19 cm) stainless steel	14-ga (0.19 cm) steel / ¾" (0.6 cm) poly / 14-ga (0.19 cm) stainless steel
Cutting Edge	¾" x 6" (0.95 cm x 15 cm)	¾" x 6" (0.95 cm x 15 cm)	¾" x 6" (0.95 cm x 15 cm)
Reinforcement Ribs	6 vertical, 2 diagonal	4 vertical, 2 diagonal	6 vertical, 2 diagonal
Plow Shoes	Optional	Optional	Optional
Trip Springs	2	2	2
SmartLock® Cylinders	1¼" x 8¼" (3 cm x 21 cm)	N/A	N/A
Angle Cylinders	N/A	1½" x 6½" (4 cm x 17 cm)	1½" x 6½" (4 cm x 17 cm)
Lift Cylinder	1¾" x 1½" x 10" (5 cm x 3 cm x 25 cm)	1¾" x 1½" x 10" (5 cm x 3 cm x 25 cm)	1¾" x 1½" x 10" (5 cm x 3 cm x 25 cm)
Attachment System	SmartHitch® 2	SmartHitch® 2	SmartHitch® 2
Plow Weight**	490 lb ^c (222 kg)	393 lb ^c (178 kg) / 367 lb ^c (167 kg) / 393 lb ^c (178 kg)	440 lb ^c (200 kg) / 416 lb ^c (189 kg) / 440 lb ^c (200 kg)
Plow Lights	SL3 LED with Ice Shield Technology™	SL3 LED with Ice Shield Technology™	SL3 LED with Ice Shield Technology™
D-Force®	N/A	Optional	Optional

*Maximum product width. **Plow weight does not include vehicle mount weight. ^cVehicle mount weight range: 45-75 lb (20-34 kg).

PROFESSIONAL-USE PLOWS



EXT

VEHICLE APPLICATION: 4WD, ¾- AND 1-TON TRUCKS

Specifications	8' Retracted / 10' Expanded Steel
Blade Width (Retracted)	96" (244 cm)
Blade Width (Extended)	120" (305 cm)
Plowing Width @ 30° Angle	83" (211 cm) / 103" (262 cm)
Blade Height	30" (76.2 cm)
Blade Thickness	11-ga steel
Cutting Edge (AR450)	½" x 6" (1.3 cm x 15 cm)
Reinforcement Ribs	9 vertical
Plow Shoes	Optional
Trip Springs	4
Angle Cylinders	1½" x 10" (4 cm x 25 cm)
Wing Cylinders	1½" x 1½" x 12¼" (4 cm x 3 cm x 32 cm)
Lift Cylinder	2" x 1½" x 10" (5 cm x 3 cm x 25 cm)
Shock Absorber	1
Attachment System	SmartHitch® 2
Plow Weight*	970 lb ^d (440 kg)
Plow Lights	SL3 LED with Ice Shield Technology™

*Plow weight does not include vehicle mount weight. ^dVehicle mount weight range: 75-105 lb (34-48 kg).

STANDARD-DUTY STRAIGHT-BLADE

VEHICLE APPLICATION: 4WD, ½- AND ¾-TON TRUCKS AND SUVs



Specifications	7'6" Standard-Duty Steel
Blade Width (Straight)	90" (229 cm)
Plowing Width @ 30° Angle	78" (198 cm)
Blade Height	27½" (70 cm)
Blade Thickness	14-ga steel
Cutting Edge	¾" x 6" (0.95 cm x 15 cm)
Reinforcement Ribs	7 vertical
Plow Shoes	Cast iron
Trip Springs	3
Angle Cylinders	1½" x 10" (4 cm x 25 cm)
Lift Cylinder	2" x 1½" x 10" (5 cm x 3 cm x 25 cm)
Shock Absorber	1
Attachment System	SmartHitch® 2
Plow Weight*	597 lb ^e (271 kg)
Plow Lights	SL3 LED with Ice Shield Technology™
D-Force®	Optional

*Plow weight does not include vehicle mount weight. ^eVehicle mount weight range: 75-105 lb (34-48 kg).

PROFESSIONAL-USE PLOWS

SUPER-DUTY STRAIGHT-BLADE

VEHICLE APPLICATION: 4WD, ¾- TO 1-TON TRUCKS



Specifications	7'6" Super-Duty Steel / Poly	8" Super-Duty Steel / Poly	8'6" Super-Duty Steel	9' Super-Duty Steel**
Blade Width (Straight)	90" (229 cm)	96" (244 cm)	102" (259 cm)	108" (274 cm)
Plowing Width @ 30° Angle	78" (198 cm)	83" (211 cm)	88" (224 cm)	93½" (238 cm)
Blade Height	29" (74 cm)	29" (74 cm)	29" (74 cm)	29" (74 cm)
Blade Thickness	11-ga steel / ⅜" (0.95 cm) poly	11-ga steel / ⅜" (0.95 cm) poly	11-ga steel	11-ga steel
Cutting Edge	½" x 6" (1.3 cm x 15 cm)	½" x 6" (1.3 cm x 15 cm)	½" x 6" (1.3 cm x 15 cm)	½" x 6" (1.3 cm x 15 cm)
Reinforcement Ribs	7 vertical, 2 diagonal	7 vertical, 2 diagonal	7 vertical, 2 diagonal	7 vertical, 2 diagonal
Plow Shoes	Cast iron	Cast iron	Cast iron	Cast iron
Trip Springs	4	4	4	4
Angle Cylinders	1½" x 10" (4 cm x 25 cm)	1½" x 10" (4 cm x 25 cm)	1½" x 10" (4 cm x 25 cm)	1½" x 10" (4 cm x 25 cm)
Lift Cylinder	2" x 1½" x 10" (5 cm x 3 cm x 25 cm)	2" x 1½" x 10" (5 cm x 3 cm x 25 cm)	2" x 1½" x 10" (5 cm x 3 cm x 25 cm)	2" x 1½" x 10" (5 cm x 3 cm x 25 cm)
Shock Absorber	1	1	1	1
Attachment System	SmartHitch® 2	SmartHitch® 2	SmartHitch® 2	SmartHitch® 2
Plow Weight*	680 lb ^B (308 kg) / 706 lb ^B (320 kg)	698 lb ^B (317 kg) / 722 lb ^B (328 kg)	720 lb ^B (327 kg)	742 lb ^B (337 kg)
Plow Lights	SL3 LED with Ice Shield Technology™	SL3 LED with Ice Shield Technology™	SL3 LED with Ice Shield Technology™	SL3 LED with Ice Shield Technology™
D-Force®	Optional	Optional	Optional	Optional

*Plow weight does not include vehicle mount weight. ^BVehicle mount weight range: 75-105 lb (34-48 kg). **Includes 1-ton trucks with dual rear wheels.



TRIP-EDGE SUPER-DUTY STRAIGHT-BLADE

VEHICLE APPLICATION: ¾- TO 1-TON TRUCKS

Specifications	7'6" Trip-Edge Steel	8" Trip-Edge Steel / Stainless	9' Trip-Edge Steel** / Stainless
Blade Width (Straight)	90" (229 cm)	96" (244 cm)	108" (274 cm)
Plowing Width @ 30° Angle	78" (198 cm)	83" (211 cm)	93½" (238 cm)
Blade Height	31" (79 cm)	31" (79 cm)	31" (79 cm)
Blade Thickness	11-ga steel	11-ga steel / 14-ga 304 stainless steel	11-ga steel / 14-ga 304 stainless steel
Base Angle	½" x 3½" (1.3 cm x 9 cm)	½" x 3½" (1.3 cm x 9 cm)	½" x 3½" (1.3 cm x 9 cm)
Cutting Edge	½" x 6" (1.3 cm x 15 cm)	½" x 6" (1.3 cm x 15 cm)	½" x 6" (1.3 cm x 15 cm)
Reinforcement Ribs	6 vertical, 2 diagonal	6 vertical, 2 diagonal	8 vertical, 2 diagonal
Plow Shoes	Cast iron	Cast iron	Cast iron
Trip Springs	4	4	4
Trip Pivot Pin Diameter	1" (3 cm)	1" (3 cm)	1" (3 cm)
Trip Spring Type	⅜" (0.95 cm) hooked extension spring	⅜" (0.95 cm) hooked extension spring	⅜" (0.95 cm) hooked extension spring
Trip-Edge Adjustable	Standard	Standard	Standard
Angle Cylinders	1½" x 10" (4 cm x 25 cm)	1½" x 10" (4 cm x 25 cm)	1½" x 10" (4 cm x 25 cm)
Lift Cylinder	2" x 1½" x 10" (5 cm x 3 cm x 25 cm)	2" x 1½" x 10" (5 cm x 3 cm x 25 cm)	2" x 1½" x 10" (5 cm x 3 cm x 25 cm)
Attachment System	SmartHitch® 2	SmartHitch® 2	SmartHitch® 2
Plow Weight*	796 lb ^B (361 kg)	825 lb ^B (374 kg) / 875 lb ^B (397 kg)	877 lb ^B (398 kg) / 934 lb ^B (424 kg)
Plow Lights	SL3 LED with Ice Shield Technology™	SL3 LED with Ice Shield Technology™	SL3 LED with Ice Shield Technology™

*Plow weight does not include vehicle mount weight. ^BVehicle mount weight range: 75-105 lb (34-48 kg). **Includes 1-ton trucks with dual rear wheels.

HEAVY-DUTY PLOWS

HEAVY-DUTY STRAIGHT-BLADE

VEHICLE APPLICATION: MEDIUM-DUTY TRUCKS, 14,000-27,000 GVWR



Specifications	9' Heavy-Duty Steel	10' Heavy-Duty Steel
Blade Width (Straight)	108" (274 cm)	120" (305 cm)
Plowing Width @ 30° Angle	94" (239 cm)	104" (264 cm)
Blade Height	34½" (88 cm)	34½" (88 cm)
Blade Thickness	7-ga steel	7-ga steel
Cutting Edge	½" x 6" (1.3 cm x 15 cm)	½" x 6" (1.3 cm x 15 cm)
Reinforcement Ribs	8 vertical, 2 diagonal	8 vertical, 2 diagonal
Plow Shoes	Cast iron	Cast iron
Trip Springs	6	6
Angle Cylinders	2" x 10" (5 cm x 25 cm)	2" x 10" (5 cm x 25 cm)
Lift Cylinder	2¼" x 1½" x 12" (6 cm x 3 cm x 31 cm)	2¼" x 1½" x 12" (6 cm x 3 cm x 31 cm)
Shock Absorber	2	2
Attachment System	SmartHitch® 2	SmartHitch® 2
Plow Weight*	1,152 lb ^A (523 kg)	1,205 lb ^A (547 kg)
Plow Lights	SL3 LED with Ice Shield Technology™	SL3 LED with Ice Shield Technology™

*Plow weight does not include vehicle mount weight. ^AVehicle mount weight range: 130-160 lb (59-73 kg).



PROFESSIONAL-USE PLOWS

DRAG PRO™

VEHICLE APPLICATION: ¾- TO 1-TON TRUCKS

Specifications	8' Fixed Wing	8'-12' Hydraulic Folding Wing	8'-16' Hydraulic Folding Wing
Blade Width (Folded)	96" (244 cm)	96" (244 cm)	96" (244 cm)
Blade Width (Extended)	N/A	144" (366 cm)	192" (488 cm)
Plow Weight*	780 lb ^B (354 kg)	790 lb ^B (358 kg)	890 lb ^B (404 kg)
Moldboard Height	24" (61 cm)	24" (61 cm)	24" (61 cm)
Moldboard Thickness	11-ga steel	11-ga steel	11-ga steel
Moldboard Cutting Edge	½" x 6" (1.3 cm x 15 cm)	½" x 6" (1.3 cm x 15 cm)	½" x 6" (1.3 cm x 15 cm)
Wing Cutting Edges	1½" x 6" (4 cm x 15 cm)	1½" x 6" (4 cm x 15 cm)	1½" x 6" (4 cm x 15 cm)
Wing Cylinders	N/A	2¼" x 1½" x 5½" (6 cm x 3 cm x 13 cm)	2¼" x 1½" x 5½" (6 cm x 3 cm x 13 cm)
Lift Cylinder	2¼" x 1½" x 12" (6 cm x 3 cm x 31 cm)	2¼" x 1½" x 12" (6 cm x 3 cm x 31 cm)	2¼" x 1½" x 12" (6 cm x 3 cm x 31 cm)
Adjustable Raise/Lower Valve	Standard	Standard	Standard

*Plow weight does not include vehicle mount weight. ^BVehicle mount weight range: 75-105 lb (34-48 kg).

ICE CONTROL EQUIPMENT

VBX HOPPER SPREADERS

VEHICLE APPLICATION: ¾- TO 1-TON TRUCKS, DUMP BODY AND FLATBED TRUCKS



Specifications	VBX 6500 Auger / Pintle Chain	VBX 8000 Auger / Pintle Chain	VBX 9000 Auger / Pintle Chain
Hopper Capacity	1.5 cu yd (1.15 cu m)	2 cu yd (1.5 cu m)	3 cu yd (2.3 cu m)
Hopper Length	78" (198 cm)	96" (244 cm)	108" (274 cm)
Overall Length	93½" (237.5 cm)	112" (284.5 cm)	122" (310 cm)
Hopper Height	38" (96.5 cm)	38" (96.5 cm)	49" (124.5 cm)
Hopper Width	48¼" (123 cm)	48¼" (123 cm)	48" (122 cm)
Complete Unit Weight (Empty)	550 lb (250 kg) / 600 lb (272 kg)	600 lb (272 kg) / 650 lb (295 kg)	710 lb (322 kg) / 760 lb (345 kg)
Hopper Construction	¾" (0.5 cm) double wall polyethylene hopper	¾" (0.5 cm) double wall polyethylene hopper	¾" (0.5 cm) double wall polyethylene hopper
Spreading Width	2' - 40' (0.6 m - 12 m) dry, free-flowing material	2' - 40' (0.6 m - 12 m) dry, free-flowing material	2' - 40' (0.6 m - 12 m) dry, free-flowing material
Max Feed Rate	2.3 cu ft (0.07 cu m) per minute / 4 cu ft (0.11 cu m) per minute	2.3 cu ft (0.07 cu m) per minute / 4 cu ft (0.11 cu m) per minute	2.3 cu ft (0.07 cu m) per minute / 4 cu ft (0.11 cu m) per minute
Lighting	Dual 55-watt halogen variable output worklights	Dual 55-watt halogen variable output worklights	Dual 55-watt halogen variable output worklights
Cover	VCP tarp w/integrated tie-downs	VCP tarp w/integrated tie-downs	VCP tarp w/integrated tie-downs
Top Screen	Standard	Standard	Standard
Gearbox Ratio	Planetary 91:1 / 137:1	Planetary 91:1 / 137:1	Planetary 91:1 / 137:1
Motor	¾ hp stainless steel feed motor	¾ hp stainless steel feed motor	¾ hp stainless steel feed motor
Trough	11-ga stainless steel	11-ga stainless steel	11-ga stainless steel
Dual Variable Speed Control	Standard with LCD display	Standard with LCD display	Standard with LCD display
Variable Speed Vibrator	200 lb (90.7 kg) 2 standard (auger) / optional (pintle)	200 lb (90.7 kg) 2 standard (auger) / optional (pintle)	200 lb (90.7 kg) 2 standard (auger) / optional (pintle)
Inverted V-Baffle	Standard / optional	Standard / optional	Standard / optional
Feed System	6" OD x 9" (15 cm x 23 cm) pitch full-length auger / 14" (36 cm) wide pintle chain	6" OD x 9" (15 cm x 23 cm) pitch full-length auger / 14" (36 cm) wide pintle chain	6" OD x 9" (15 cm x 23 cm) pitch full-length auger / 14" (36 cm) wide pintle chain
LED CHMSL	Standard	Standard	Standard
Adjustable Deflector	Standard	Standard	Standard
Spinner Assembly	Easily removable; swing out; height-adjustable	Easily removable; swing out; height-adjustable	Easily removable; swing out; height-adjustable
Hopper Tie-Down Kit	Standard	Standard	Standard
Spinner	14½" (36.8 cm) diameter urethane	14½" (36.8 cm) diameter urethane	14½" (36.8 cm) diameter urethane
Spinner Gearmotor	½ hp spinner gearmotor (located above spinner)	½ hp spinner gearmotor (located above spinner)	½ hp spinner gearmotor (located above spinner)
Minimum Bed Length	66" (168 cm)	78" (198 cm)	96" (244 cm)
Vehicle Application	¾- to 1-ton trucks	1-ton trucks and up	Dump body and flatbed with 13,000 GVWR and up

See Spreader Materials Guide on Page 34 for more details on material spreading options.

ICE CONTROL EQUIPMENT

FORGE® HOPPER SPREADERS

VEHICLE APPLICATION: ½- TO 1-TON TRUCKS, DUMP BODY AND FLATBED TRUCKS



Specifications	FORGE® 1.0 Auger / Pintle Chain	FORGE® 1.5 Auger / Pintle Chain	FORGE® 2.0 Auger / Pintle Chain
Hopper Capacity	1 cu yd (0.76 cu m)	1.15 cu yd (1.15 cu m)	2 cu yd (1.5 cu m)
Hopper Length	49.5" (126 cm)	70" (177.8 cm)	70" (177.8 cm)
Overall Length	78" (198 cm)	98" (249 cm)	98" (249 cm)
Hopper Height	33" (84 cm)	33" (84 cm)	38" (96.5 cm)
Hopper Width	48" (122 cm)	48" (122 cm)	48" (122 cm)
Complete Unit Weight (Empty)	575 lb (261 kg) / 625 lb (284 kg)	700 lb (318 kg) / 750 lb (340 kg)	725 lb (328.9 kg) / 775 lb (351.5 kg)
Hopper Construction	14-ga stainless steel	14-ga stainless steel	14-ga stainless steel
Spreading Width	2 ft - 40 ft (0.6 m - 12.2 m) dry, free-flowing material	2 ft - 40 ft (0.6 m - 12.2 m) dry, free-flowing material	2 ft - 40 ft (0.6 m - 12.2 m) dry, free-flowing material
Max Feed Rate	2.3 cu ft (0.07 cu m) per minute / 4 cu ft (0.11 cu m) per minute	2.3 cu ft (0.07 cu m) per minute / 4 cu ft (0.11 cu m) per minute	2.3 cu ft (0.07 cu m) per minute / 4 cu ft (0.11 cu m) per minute
Lighting	Optional	Optional	Optional
Cover	Optional	Optional	Optional
Top Screen	Standard	Standard	Standard
Gearbox Ratio	Planetary 91:1 / 137:1	Planetary 91:1 / 137:1	Planetary 91:1 / 137:1
Motor	½ hp motor	½ hp motor	½ hp motor
Trough	11-ga stainless steel	11-ga stainless steel	11-ga stainless steel
Dual Variable Speed Control	Standard	Standard	Standard
Vibrator	200 lb (90.7 kg) 1 standard (auger) / optional (pintle)	200 lb (90.7 kg) 1 standard (auger) / optional (pintle)	200 lb (90.7 kg) 1 standard (auger) / optional (pintle)
Inverted V-Baffle	Standard / optional	Standard / optional	Standard / optional
Feed System	6" OD X 9" (15 cm x 23 cm) pitch full-length auger / 14" (36 cm) wide pintle chain	6" OD X 9" (15 cm x 23 cm) pitch full-length auger / 14" (36 cm) wide pintle chain	6" OD X 9" (15 cm x 23 cm) pitch full-length auger / 14" (36 cm) wide pintle chain
LED CHMSL	Standard	Standard	Standard
Adjustable Deflector	Standard	Standard	Standard
Spinner Assembly	Easily removable; swing out	Easily removable; swing out	Easily removable; swing out
Hopper Tie-Down Kit	Standard	Standard	Standard
Spinner	14½" (36.8 cm) diameter urethane	14½" (36.8 cm) diameter urethane	14½" (36.8 cm) diameter urethane
Spinner Gearmotor	½ hp gearmotor (located above spinner)	½ hp gearmotor (located above spinner)	½ hp gearmotor (located above spinner)
Minimum Bed Length	66" (168 cm)	78" (198 cm)	78" (198 cm)
Vehicle Application	½-ton trucks	¾- to 1-ton trucks	1-ton trucks and up

See Spreader Materials Guide on Page 34 for more details on material spreading options.

ICE CONTROL EQUIPMENT

TGS TAILGATE SPREADERS

VEHICLE APPLICATION: SUVs AND ½- TO 1-TON TRUCKS

Specifications	TGS 300*	TGS 600*	TGS 800**	TGS 1100*
Hopper Design	Low-profile	Low-profile	Low-profile	Low-profile
Hopper Construction	Polyethylene	Polyethylene	Polyethylene	Polyethylene
Hopper Capacity Limit***	3 cu ft / 200 lb (0.09 cu m / 91 kg)	6 cu ft / 400 lb (0.17 cu m / 181 kg)	8 cu ft / 780 lb (0.23 cu m / 354 kg)	11 cu ft / 800 lb (0.31 cu m / 363 kg)
Hopper Dimensions	21½"H x 29"W x 15"D (56 cm x 74 cm x 38 cm)	25¾"H x 38"W x 21"D (65 cm x 97 cm x 53 cm)	48"H x 36"W x 21"D (122 cm x 91 cm x 53 cm)	34"H x 44"W x 24"D (86 cm x 112 cm x 61 cm)
Spreader Weight	70 lb (32 kg) plus mount	101 lb (46 kg) plus mount	220 lb (100 kg) plus mount	152 lb (69 kg) plus mount
Hopper Cover	Solid poly	Solid poly	Solid poly	Solid poly
Feed Mechanism	Internal auger with material saving brush and adjustable drop-feed gate	Internal auger with cable-link agitator and adjustable feed gate	Feed paddle	Internal auger with cable-link agitator and adjustable feed gate
Vibrator Kit	Not recommended	Optional	Optional	Optional
Top Screen With Bag Opener	Top screen only	Standard	Standard	Standard
Motor	High-torque / 12-volt DC	High-torque / 12-volt DC	(2) High-torque / 12-volt DC	High-torque / 12-volt DC
Spinner	12" (31 cm) diameter polyurethane	12" (31 cm) diameter polyurethane	12" (31 cm) diameter polyurethane	12" (31 cm) diameter polyurethane
Spreading Width	4' - 30" (1 - 9 m)	4' - 30" (1 - 9 m)	4' - 20" (1 - 6 m)	4' - 30" (1 - 9 m)
Material Deflector	Adjustable poly deflector	Adjustable poly deflector	Adjustable poly deflector	Adjustable poly deflector
Receiver Class Hitch	Class 2-4	Class 3 or 4	Class 4	Class 4
Control	Variable speed control with blast feature and overload protection	Variable speed control with blast feature and overload protection	Independent variable speed control for material feed and spinner	Variable speed control with blast feature and overload protection
Vehicle Applications	SUV, light truck and up	¾- and 1-ton trucks	¾- and 1-ton trucks	¾- and 1-ton trucks

*Designed to spread dry, free-flowing material (i.e., salt, deicers, etc.). **Designed to spread sand, salt or a combination of both. See Spreader Materials Guide on Page 34 for more details on material spreading options.
***Capacity weight max.



BOSS EXTENDED FAMILY

GIVING YOU EVERYTHING YOU NEED TO RESTORE ORDER



QUESTIONS? CHAT LIVE ONLINE.
BOSSPLOW.COM



All images shown may include standard/optional equipment. Please consult your local BOSS Dealer for more information.

TWO-YEAR LIMITED WARRANTY

All BOSS snowplows and equipment are guaranteed to be free from defects in material and workmanship for two full years from the date of purchase. Stop by any authorized BOSS Dealer to receive complete details on our two-year parts and labor warranty. Please visit bossplow.com for more details.

LEGAL STATEMENT

Vehicles intended to be equipped with a spreader and/or snowplow must comply with the vehicle manufacturers' specifications for equipment application. BOSS Products reserves the right under its product improvement policy to change construction or design details and furnish equipment when so altered without reference to illustrations or specifications used herein. BOSS Products may be protected by one or more patents; please see bossplow.com for more details.

To comply with federal regulations and to assure a safe vehicle, do not exceed the front gross axle weight rating (FGAWR), rear gross axle weight rating (RGAWR), gross vehicle weight rating (GVWR) or maximum vehicle payload ratings at any time. Combinations of equipment such as snowplows and spreaders, density of material being spread and the number of vehicle occupants should be taken into consideration. Ensuring these limitations are not exceeded may require weighing the vehicle and adding ballast as necessary. For receiver hitch-mounted products, do not exceed hitch rating at any time. Completed vehicle must not exceed front GAWR or GVWR.

Ask your BOSS Dealer or visit bossplow.com to browse the full family of BOSS products, including Truck Equipment, ATV/UTV Equipment, Heavy Equipment, Ice Control Equipment, Accessories and more.

DON'T FORGET TO ASK ABOUT AVAILABLE FINANCING OPTIONS.

Ask your BOSS Dealer or visit bossplow.com for more details.