



**MK MARTIN**  
ENTERPRISE Inc.

Axis Rotary Cutter



# AXIS TOOL ARM

The Axis Tool Arm has been developed to provide an economical alternative for mowing road side ditches or along side fences. An 84" offset allows plenty of room to clear the tractor tires, as well as keeping the tractor on a more level surface. Should you hit a solid object with the outer edge of the tool attached to the arm, we have shear bolt protection on a breakaway link. With a 55° cutting angle with the cylinder extended, and 90° cutting angle with the cylinder retracted, the operator has lots of flexibility to match whatever terrain he/she is working with.

## Standard Features

- Pilot operated check valve to prevent drift in working position
- Manual lock
- Transport position for safe transporting
- Counter weight bracket, takes up to 500 lbs of suitcase weight

Extension	AXIS4	AXIS5-6
Weight (LBS.)	751	900
Offset	60"	84"
Category	1	1&2
Maximum Tool Weight (LBS.)	480	800
4' Rotary Cutter	req. min. 30 HP	
5' Rotary Cutter	req. min. 60 HP	
6' Rotary Cutter	req. min. 80 HP	
Cutting Angle Cyl. Ext.	55°	
Cutting Angle Cyl. Ret.	90°	
Tractor Remotes Required	2	

Printed in Canada

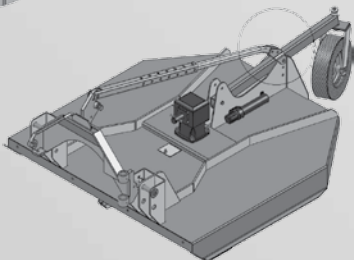
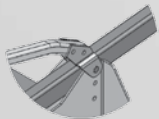
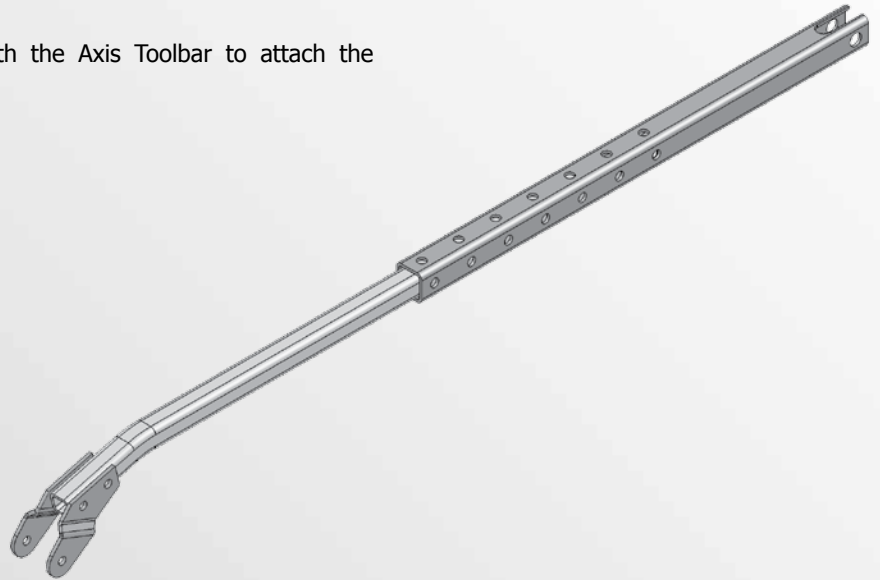
519.664.2752

[www.mkmartin.ca](http://www.mkmartin.ca)

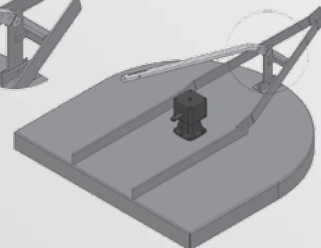
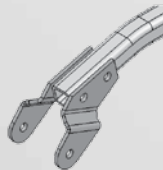
### Attaching Stabilizer Arm to Cutter

Various attachment brackets are supplied with the Axis Toolbar to attach the Stabilizer Bar to the cutter.

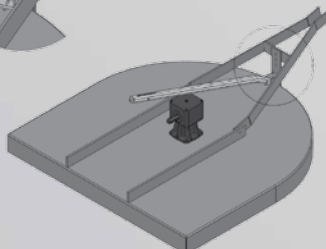
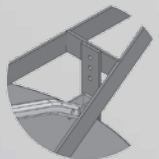
**Pulsar**



**Kodiak**



**Fork Rear Wheel  
Style with 180°  
Wheel Adjuster**



**Fork Rear Wheel  
Style with Flat  
Wheel Adjuster**

All four adaptors are included in the kit.