

INDUSTRIAL SNOWBLOWERS



HIGH PERFORMANCE SNOWBLOWERS

Three families of high performance snowblowers for a multitude of high volume snow removal applications.

More than 50 years of dedicated research and development have made Pronovost the leading manufacturer of snowblowers.

PRONOVOST, THE TRUE WINTER SPECIALIST.



LET'S *Pronovost*
GO FORWARD.

www.pronovost.qc.ca

INDUSTRIAL Series

For high volume such as road clearing, truck loading and many other applications. Designed for continuous snow blowing, design decreasing and facilitating maintenance.

INDUSTRIAL LARGE OPEN FLIGHT AUGER (PGV)

SINGLE AUGER MODELS

PGV-1021TRC : 102"

PGV-120137TRC : 118 ¼"



**Horse Power
recommended :**
120 to 350 HP PTO

DUAL AUGER MODELS

PGV-1022TRC : 102"

PGV-1202TRC : 118 ¼"



**Horse Power
recommended :**
225 to 350 HP PTO



STANDARD FEATURES

- Hydraulic chute rotation kit, motor included.
- PTO category V90, multilobe.
- Hardox 450 scraper blade, removable, sharpened.
- Skid shoes (adjustment with spacers), extra hard Hardox 600 sole.
- Hydraulic motor for drum rotation with reduction system.
- Reducer-inverter gearbox.
- Rubber deflector flap at the top of the frame.
- Basic lateral blades, high quality steel.
- Industrial Yellow color.

**A BREAK-THROUGH IN THE SNOW REMOVAL WORLD,
THE CONCEPT OF THE LARGE OPEN FLIGHT AUGER
OFFERS THE FOLLOWING BENEFITS:**

- Less snow spillover and leftover on the ground.
- Less demanding on your engine since the snowblower is easier to turn and, therefore, increases the yield by decreasing fuel consumption.
- Easier to go through hardened snow or ice.
- More fun to use !



3 POINT HITCH

Less strain is put upon the 3 point hitch since the center of gravity is closer to the tractor.



**HIGH PERFORMANCE
IMPELLER**

Interchangeable bolted Hardox 450 impeller blades and Hardox 450 impeller housing. Inverted rotation allows the snow to be blown closer to transport trucks for more efficiency.



MAIN AUGER

with replaceable bolted ribbon sections.



INDUSTRIAL FULL FLIGHT AUGER

P-982TRC : 98", dual auger

P-1022TRC : 102", dual auger



**Horse Power
recommended :**
120 to 350 HP PTO

STANDARD FEATURES

- Chute rotation kit for hydraulic motor (motor included).
- PTO category V90, multilobe.
- Hardox 450 scraper blade, removable, sharpened.
- Quick adjust skid shoes, extra hard Hardox 600 soles.
- Hydraulic motor for drum rotation with reduction system.
- Welded carbon teeth on both full flight serrated augers.
- Basic lateral blades, high quality steel. (Not illustrated)
- Storage support.
- Industrial Yellow color.

ROLLER BEARINGS

extra capacity with ductile cast iron flanges for intensive service !

REINFORCING PLATES

at strategic points.





SEMI-INDUSTRIAL LARGE OPEN FLIGHT AUGER (PGS)

PGS-1020TRC : 102", single auger

PGS-1080TRC : 108", single auger



Horse Power recommended :

100 to 150 HP PTO with 540 RPM PTO

125 to 200 HP PTO with 1000 RPM PTO

STANDARD FEATURES

- Semi-industrial chute with greasable hinges and access panel (removable).
- Hydraulic cylinder and hose support for deflector adjustment.
- Chute rotation kit for hydraulic motor (motor included).
- Hydraulic motor for rotary drum rotation.
- PTO category T90.
- High quality steel scraper blade, reversible.
- Quick adjust skid shoes, high quality steel.
- Hardox 450 impeller housing.
- Chain Renold #100HV in oil bath.
- Open flight serrated auger.
- Rubber deflector flat at the top of the frame.
- Storage support.
- Industrial Yellow color.

DESIGNED FOR BIG JOBS

- Impeller designed to remove and propel snow efficiently. Assembled, welded and balanced with precision.
- A unique industrial strength, open flight, serrated auger with replaceable sections.
- Two skid shoes adjustable in seconds.

PGS-1080TRC

New
2019

IMPELLER HOUSING

Made of wear resistant Hardox 450 steel for optimal longevity.

HYDRAULIC MOTOR, RACK & PIGNON

for the most efficient drum rotation.

BOLTED AUGER FLANGE

for quick dismount.





SPÉCIFICATIONS

	OPEN FLIGHT AUGER				FULL FLIGHT AUGER		SEMI-INDUSTRIAL	
	PGV-1021TRC	PGV-1022TRC	PGV-1202TRC	PGV-120137TRC	P-982TRC	P-1022TRC	PGS-1020TRC	PGS-1080TRC
Horse power recommended (HP PTO) min.-max.	120-200	225-350			120-200	225-350	100-200	
Approximate performance (tons imp./h)	1600 (tractor 150 HP)	2500 (tractor 225 HP)			1400 (tractor 150 HP)	2200 (tractor 200 HP)	1500 (tractor 150 HP)	
Working width in. mm	102" 2591	102" 2591	118 ¼" 3004	118" 2997	98" 2489	102" 2591	102" 2591	108" 2743
Cutting height in. mm	53" 1346	68 ¼" 1734		53" 1346	52" 1321	59" 1499	47 ½" 1207	
Cutting height - lateral blades in. mm	Included : 59" 1499 Opt. : 78" 1981	Included : 75 ½" 1918 Opt. : 96 ½" 2451	Included : 75 ½" 1918 Opt. : 96 ½" 2451	Included : 59 ¼" 1505 Opt. : 78 ¼" 1988	Included : 59" 1499 Opt. : 77" 1956	Included : 62" 1575 Opt. : 84" 2134	Opt. CL : 66" 1676 or 78" 1981	
Drum diameter in. mm	34" 864	37" 940			34" 864	37" 940	34" 864	
Depth of drum in. mm	15" 381				15" 381		15" 381	
Number of impeller blades	6 in Hardox 450				6 in Hardox 450		6 - ½" thick	
Impeller shaft diameter in. mm	2" 51	2 ½" 64			2" 51	2 ½" 64	2" 51	
Height - impeller center in. mm	22 ¼" 565	24" 610			21 ¾" 552	23" 584	22" 559	
Impeller speed	540 RPM inverted				540 RPM		540 RPM	
Number of augers	1 double ribbonned, serrated	2 double ribbonned, serrated		1 double ribbonned, serrated	2 full flight, serrated		1 double ribbonned, serrated	
Main auger diameter in. mm	34" 864				18" 457	20" 508	34" 864	
Drive chain	Renold no. 100HV, oil bath				Renold no. 100HV, oil bath		Renold no. 100HV, oil bath	
Hitch category	2	2 ou 3		2	2	2 ou 3	2	
Standard PTO	V90 multilobe, choice of yoke as required				V90 multilobe, choice of yoke as required		T90	
Center of gravity from the 3 point at its shortest	39" 991	40 9/16" 1030	40 9/16" 1030	39 1/16" 992	40 3/16" 1021	42 1/8" 1070	44" 1118	
Torque (reference) lbs-in	172 550	222 079	229 701	204 448	174 900	222 300	169 180	173 184
Weight lbs kg	4450 2019 ¹	5475 2484 ¹	5663 2569 ¹	5231 2373 ¹	3700 1680 ³	4600 2088 ³	3845 1744 ²	3936 1785 ²

¹ Including chute PCTC-IND and reducer. ² Including telescopic chute. ³ Including chute PCT.

Design and specifications subject to change without notice.

Width and specifications can be adapted to the needs of the end user under certain conditions. **Contact the Pronovost team for a quote.**

Some options for more performance.

CHUTES



Telescopic
Designed for general use and truck loading.



Telescopic with rounded deflector
Designed for truck loading.

New
Working lights
optional on telescopic chutes.

KIT OF DIVERTERS



Kit of electric directional control valves to control hydraulic functions.



Joystick controller
Installs on a hydraulic lever or tractor.

Wiring harness and connector 20' (6M).

PTO



Bigger



Multilobe
For intensive use.

OIL COOLER



Pump and tank

LATERAL SKID SHOE



Extra long life for sidewalk

SKID SHOES



Hardox 450 sole
Industrial.

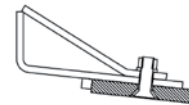


Hardox 600 sole
Industrial.

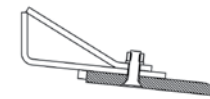


Stainless steel sole
Rust proof.

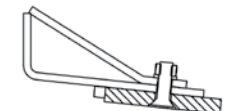
CUTTING EDGE



Hardox 450
Semi-industrial, long life.



Hardox 450
Industrial, extra long life.



Stainless steel
Rust proof.

SPEED REDUCERS



3 gears
1000 / 555 RPM



3 gears
1000 / 562 RPM

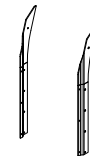


Drop box : reducer or reducer inverter
1000 / 540 RPM

LATERAL BLADES



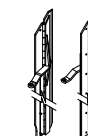
High quality steel



With brace



Hardox 450



Hydraulic in Hardox 450



FOR SIDEWALK

3 MODELS

P-542 : 55", dual open flight auger



Horse Power recommended :
30 to 55 HP PTO

P-254 : 54", dual full flight auger



Horse Power recommended :
50 to 75 HP PTO

STANDARD FEATURES

- Semi-industrial chute with greasable hinges and access panel (removable).
- Hydraulic cylinder and hose support for deflector adjustment.
- Chute rotation kit for hydraulic motor (motor included).
- PTO category T50.
- Hardox 450 scraper blade.
- Quick adjust skid shoes with Hardox 450 soles.
- Open flight serrated augers.
- Industrial Yellow color.

STANDARD FEATURES

- Semi-industrial chute with greasable hinges and access panel (removable).
- Hydraulic cylinder and hose support for deflector adjustment.
- Chute rotation kit for hydraulic motor (motor included).
- PTO category T60.
- Removable scraper blade, high quality steel, reversible.
- Quick adjust skid shoes.
- High quality steel fixed lateral blades.
- Full flight serrated augers.
- Industrial Yellow color.

SERRATED AUGERS

Not illustrated.

DESIGNED TO MEET THE NEEDS OF CITIES AND TOWNS

requiring a robust unit manoeuvrable in tight areas. Standard features include serrated augers, making it easier to go through hardened snow or ice.

FOR CONVENTIONAL TRACTOR OR SPECIAL VEHICLE

Can be mounted on a variety of carriers used for sidewalk maintenance. Can be offered in P.T.O. drive or hydraulic drive. Please contact us for your specific needs.



P-54126-GV : 54", large open flight auger



Horse Power recommended :
50 to 70 HP PTO

STANDARD FEATURES

- 3-Deflector semi-industrial chute with greasable hinges and removable access panel.
- Hydraulic cylinder and hose support for deflector adjustment.
- Chute rotation kit for hydraulic motor (motor included).
- Standard PTO.
- High quality steel scraper blade, reversible.
- Open flight serrated auger.
- Quick adjust skid shoes, high quality steel.
- Hardox 450 drum wall.
- Drive chain protected by sealed guard as per IP53 index (Patent Pending).
- Pronovost red color (Yellow Industrial available as an option).

P-54126-GV
New
2020



SPECIFICATIONS

		FOR SIDEWALK		
		P-542	P-254	P-54126-GV
Horse power recommended (HP PTO)	min.-max.	30-55	50-75	50-70
Approximate performance	(tons imp./h)	550	650	680
Working width	in. mm	55 3/8" 1406	54" 1372	54" 1372
Cutting height	in. mm	37" 940	51" 1295	34" 863
Cutting height - lateral blades	in. mm	Opt. CLH : 47" 1194	52" 1321	42 1/2" 1080
Drum diameter	in. mm	26" 660	26" 660	26" 660
Depth of drum	in. mm	10 1/2" 267	12" 305	12" 305
Number of impeller blades		4	4	4
Impeller shaft diameter	in. mm	1 9/16" 40	1 9/16" 40	1 9/16" 40
Height - impeller center	in. mm	16 1/2" 419	17" 432	16 1/2" 419
Impeller speed		540 RPM	540 RPM	540 RPM
Number of augers		2 open flight, serrated	2 full flight, serrated	1 open flight, serrated
Main auger diameter	in. mm	18 1/2" 470	15" 381	25" 635
Drive chain		No. 60	No. 80	No. 60
Hitch category		2	1 or 2	1
Standard PTO		T50	T60	T50
Center of gravity from the 3 point at its shortest		26 9/16" 675	27 3/4" 705	27 5/8" 701
Torque (reference)	lbs-in	29 219	38 850	30 774
Weight including chute	lbs kg	1100 499	1400 635	1114 506

Design and specifications subject to change without notice.





LOWER LATERAL RUNNERS
in Hardox 450.

LATERAL BLADES
Bolted lateral blades foregoing the auger by 3" to prevent contact between the auger and doors or others.

RUBBER GUARD
to reduce projections.

LARGE AUGER
double ribboned, serrated.

SEMI-INDUSTRIAL LARGE OPEN FLIGHT AUGER WITH 45° INCLINED SCRAPER BLADE

2 MODELS

PGS-740 : 74", single auger

PGS-800 : 80", single auger



Horse Power recommended :
45 to 75 HP PTO

STANDARD FEATURES

- Semi-industrial chute with greasable hinges and access panel (removable).
- Hydraulic cylinder and hose support for deflector adjustment.
- Chute rotation kit for hydraulic motor (motor included).
- PTO category T60.
- Hardox 550 removable scraper blade.
- Hardox 450 skid shoes.
- Hardox 450 impeller housing.
- Auger chain Renold #80HV in oil bath.
- Large diameter double ribboned serrated auger.
- Industrial Yellow color.



EFFICIENT IN HARD PACKED SNOW AND ICE

Engineering and design unique to Pronovost resulting in the most resistant and efficient products of the industry.

SPECIFICATIONS

	SEMI-INDUSTRIAL	
	PGS-740	PGS-800
Horse power recommended (HP PTO) min.-max.	45-75	45-75
Approximate performance (tons imp./h)	650	650
Working width in. mm	74" 1880	80" 2032
Cutting height in. mm	36 3/4" 933	36 3/4" 933
Cutting height - lateral blades in. mm	58 1/2" 1486	58 1/2" 1486
Drum diameter in. mm	28" 711	28" 711
Depth of drum in. mm	10 1/2" 267	10 1/2" 267
Number of impeller blades	4	4
Impeller shaft diameter in. mm	1 9/16" 40	1 9/16" 40
Height - impeller center in. mm	18" 457	18" 457
Impeller speed	540	540
Number of augers	1 open flight, serrated	1 open flight, serrated
Main auger diameter in. mm	28" 711	28" 711
Drive chain	Renold no. 80HV oil bath	Renold no. 80HV oil bath
Hitch category	2	2
Standard PTO	T60	T60
Center of gravity from the 3 point at its shortest	30 1/2" 775	30 1/2" 775
Torque (reference) lbs-in	46 177	47 733
Weight including PSIG chute lbs kg	1514 687	1565 710

Design and specifications subject to change without notice.

PRONOVOST Series with hydraulic drive

GROUP H²E

HYDRAULIC
HIGH EFFICIENCY



**Hydraulic
power range :**

18 to 60 GPM, up to 5800 psi

Boasting a range of more than 50 PTO driven snowblower models, we have developed a high performance hydraulic drive system that allows us to combine the best snowblower for every type of utility vehicle and wheel loader.

Our hydraulic driven snowblowers typically have the following characteristics :

- Open and serrated auger.
- Quick adjust skid shoes.
- Hydraulic chute rotation and deflector.
- High performance with piston engine.

... and present the following options :

- Drum rotation (TRC)
- Hydraulic lateral blades



SNOWBLOWER MODEL : P-540
VEHICLE : WACKER NEUSON WL32



SNOWBLOWER MODEL : P-112234TRC
VEHICLE : CATERPILLAR 938 K



Discover the PUMA AND LYNX SERIES for home use.



PUMA



PUMA INVERTED



LYNX



Visit our **WEBSITE !**
www.pronovost.qc.ca

- ✓ See our snowblowers in action.
- ✓ Learn more about our snowblowers.
- ✓ Compare models.
- ✓ Find the right snowblower for you.
- ✓ Discover the whole product range.

Discover the PRONOVOST SERIES for commercial snow removal.



PRONOVOST GROUPS I, II, III AND GV



CYCLONE BY PRONOVOST



PXPL / X-PRO



HYDRAULIC HIGH EFFICENCY

LET'S *Pronovost*
GO FORWARD.

Les Machineries PRONOVOST INC.

260, Haut du Lac Sud (route 159), St-Tite, Quebec, Canada, GOX 3H0

Tel.: (418) 365-7551 Fax: (888) 652-9270

info@pronovost.qc.ca • www.pronovost.qc.ca



Printed in Canada 04/2022

