

ADVANCED • HEAVY DUTY • ALL SEASON • AMPHIBIOUS • OFF-ROAD VEHICLES



SINCE 1967

Argo 8x8
XT Models

2015

Third party accessories shown. Welding equipment courtesy of Lincoln Electric.

EXTREME TERRAIN VEHICLE SOLUTIONS



All season ARGO 8x8 XT models are reliable partners in the toughest conditions imaginable, safely transporting your crew and gear to remote locations not accessible by traditional vehicles.



ARGO Utility Box protects and provides ample storage for equipment and tools.



Hydraulic power pack made by Chicago Pneumatic. Installation with quick connect ARGO Universal Mounting System (Inset).

Applications

- People and Equipment Transport
- Construction and Maintenance
Power Lines, Gas Pipelines
Cable & Wireless, Remote Towers
- Oil & Gas and Mining
Exploration, Drilling Support,
Environmental Surveys
- Fire & Rescue
- Weed Control & Insect Abatement
- Defence Sector
- Estate Management

Features & Capabilities

- Versatile rear cargo platform
- Quick change of customized equipment
- Low cost of ownership
- Very low ground pressure
- Operates in flooded areas
- Crosses deep mud and marshy terrain
- Fully amphibious without vehicle preparation
- Up to 4 passengers
- Travels over deep snow and ice
- High altitude performance
- Overcomes obstacles and rocky terrain
- Hauls trailers and supplies

ARGO 8x8 XT models are available in tracked or non-tracked configurations.

Safety

Low center of gravity and full-time, eight-wheel drive provide sure-footed traction and maneuverability through demanding weather and terrain conditions. ARGO XT models are equipped with a standard emergency parking brake and a robust skid plate for lower body protection.

XT models can be equipped with an optional rollover protective structure (ROPS) with integral driver/passenger seat belts and optional windshield. The ROPS is certified to ISO 5700 and mounts directly to the main chassis. The ROPS design enables the vehicle to be used as a two person, plus cargo configuration. The optional rear ROPS attachment and rear bench seat allow transportation for four passengers.

NOTE: Seat belts must be worn by all occupants if a ROPS is installed however, seat belts must be unfastened before water entry.

Stability

ARGO XT models are 5" (127 mm) wider than the ARGO 8x8 750 HDI and offer maximum operator safety due to their stability, low centre of gravity and wide tracks. The lightweight design provides safe operation in challenging terrain and allows 9" (225 mm) of ground clearance at the center of the vehicle. The specified load capacity of ARGO XT models is maintained in most off-road applications while the load capacity of UTV and other vehicles often is considerably reduced to allow for safe operation in challenging terrain.

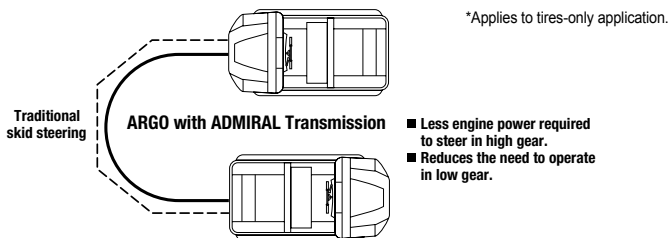
Convenience

ARGO XT models feature premium foam-padded, hinged, front bench seats with easy access to deep storage compartment/toolbox and battery, two 12 volt outlets, cup holders, grab handles and dual glove box.

Driver Operation and Control

ARGO XT models feature a technologically advanced, direct drive triple differential ADMIRAL steering transmission, feeding even torque to all 8 of the big 25" (635 mm) ARGO tires.

Operating in high range, these superior extreme terrain vehicles steer smoothly through challenging terrain. In low range, the ARGO can turn within its own length with minimal effort.* The ARGO has excellent approach and departure angles to easily overcome obstacles.



With an industry first, ARGO XT models feature multi-position handlebar steering allowing the user to choose their driving position. The drive position is quickly changed by releasing the steer lock mechanism and moving the steer column to a comfortable position for the operator.

Instrumentation package is visible from any driving position and includes:

- Fuel level
- Digital hour meter and odometer
- Speedometer
- Warning lights include:
 - Check engine
 - Park brake ON indicator
 - Oil pressure
- Tachometer
- Coolant temperature
- Voltmeter

The instrument panel also includes a HI and LOW shift lever plus ignition and light switch. Accessory switches are easily added via pre-located positions within the panel.

Fully Amphibious without Vehicle Preparation

With its sealed lower body, ARGO vehicles are designed to float on bodies of water and flooded areas allowing transport for up to 4 passengers or a total load capacity of 1000 lb. (454 kg). The specially designed tires propel the ARGO at a speed of 3 mph (5 kph).





Halogen headlights, optional brushguard, 4,500 lb. (2,041 kg) power winch (optional) and skid plate for lower body protection.



Multi-position steering system, instrumentation panel and convenience package (two cup holders, two storage compartments and two 12 volt outlets).



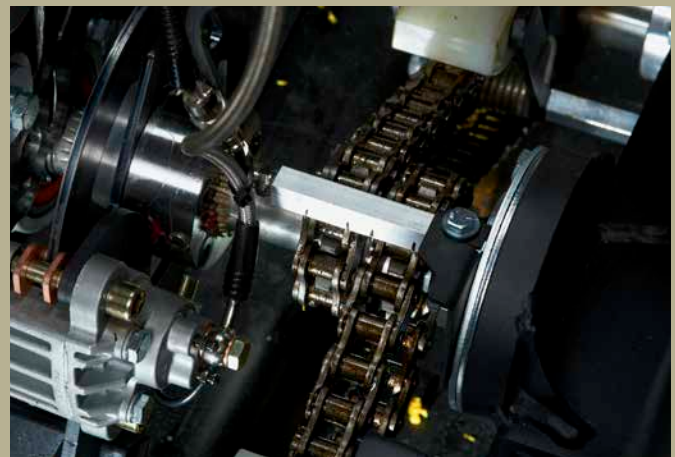
Optional, certified ROPS for two or four passengers is available with hard top for sun / rain protection and a light bar to add auxiliary lighting.



Optional, easily removable flatbed platform with access panel to storage area. Custom cargo configurations can be created by adding stakes, hinged or fixed side panels and tailgate.



Optional 18" (457 mm) rubber tracks with heavy duty UHMW-PE guides on high impact resistant 24" (610 mm) tires and reinforced rims. www.argo.tv/catalog/tracks



Optional automatic chain lubrication system featuring reduced maintenance requirements and longer chain life.

Large rear cargo area allows space for additional seating or mounting of third party equipment.



Hydraulic Compressor courtesy of VMAC.



Argo 8x8 XTD • XTI

ARGO 8x8 XT models are amphibious all terrain utility vehicles designed to meet the needs of commercial users world-wide. They feature a Kohler diesel or Kohler EFI engine plus an ODG patented, triple differential, ADMIRAL transmission. The main chassis of these vehicles has been engineered using field-proven technology, allowing for increased payloads and greater durability. These vehicles have been designed to quickly and easily change from one application to another using common frame mounting locations. Greater serviceability is achieved by easily removing body panels and screens.

treadlightly®
ON LAND AND WATER



ENVIRONMENTAL IMPACT: From the unique tread pattern of the tires to the low ground pressure, every ARGO model is designed to minimize its environmental footprint.



Safety!

...always in Season!

Seat belts must be worn by all occupants if a ROPS is installed however, they must be unfastened before water entry. For safety, we recommend wearing approved helmets and eye protection. When operating in water, always wear approved Personal Floatation Devices. Always remain seated while in the ARGO. When equipped with tracks, XT models are not fully amphibious, however water crossing is possible with a fording depth of 26" (660 mm).

COMFORT

Cab Heater (XTD: 958-156)
(XTI: 958-129) Driver and passenger heater option comes complete with 2 defrost vents and 2 side vents.



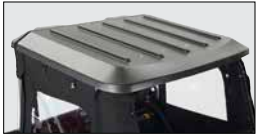
Canvas Sides (2 Person)
(958-205) Shelters driver and front passenger from the elements. Features roll up side & rear panels, zippered windows and storage pouch. Requires 956-15 ROPS, 958-90 Windshield and 958-102 Hard Top.



Canvas Enclosure Conversion Kit
(958-217) Converts the 2 person canvas sides to a 4 person canvas enclosure. Requires 956-15 & 956-16 ROPS, 958-90 Windshield, 958-102 & 958-104 Hard Top and 958-205 (2 person canvas sides).



Canvas Sides (4 Person) (958-216) Shelters driver and passengers from the elements. Features roll up side & rear panels, zippered windows and storage pouch. Requires 956-15, 956-16 ROPS, 958-90 Windshield and 958-102, 958-104 Hard Top.



Hard Top
Provides shelter from the elements.
2 Person (958-102)
Requires 956-15 ROPS.
4 Person (958-104) Requires 956-15, 956-16 ROPS and 958-102.



Windshield (958-90)
Scratch resistant acrylic windshield easily mounts to the front ROPS hoop. Features a lower wiper mount location. Requires 956-15 ROPS.

Windshield Wiper with Washer Kit
(958-130) Single-speed window-mounted wiper complete with washer kit. Requires 956-15 ROPS, 958-90 windshield. Cannot be used with foldable windshield (958-192).



Rear Bench Seat (958-70)
Frame mounted, forward facing rear bench seat provides additional seating for 2 passengers.



Soft Top
4 Person Enclosure (958-171)
2 Person Enclosure (958-191)
Conversion Kit (958-172)
2 or 4 person convertible top designed to be used with fold down windshield. Cannot be used with 956-15 or 956-16 ROPS kits.



Windshield-Foldable (958-192)
Scratch-resistant acrylic in an aluminum frame. Features a lower wiper mount location. Stand alone option or use with 958-171 and 958-191 convertible top.

CONVENIENCE

Battery Shut Off (850-242)
Positive battery cable interrupt located under the driver seat. Disconnects battery from vehicle electrical system to prevent accidental battery drain.



Chain Lubrication System (850-228)
Provides 5 seconds of chain lubricant every 15 minutes or 1 hour of run time. 1 quart (1 L) oil reservoir.



Flatbed Platform (958-112)
66" W x 44" L (1675 mm x 1115 mm). Mounts to the main chassis and is supported by the upper frame to provide a large area for cargo and equipment transportation. Includes 4 tie down points and a 32"W x 35"L (810 x 890 mm) hatch for easy access to lower body cargo area.

FLATBED OPTIONS
Stake Sides for Wood Panels
(958-123) Customize your flat deck with this stake kit. Includes stake pocket rails and nine stakes. Add your own material to finish the sides and rear.

3 Hinged Steel Sides (958-124)
10" (255 mm) sides for flatbed. All sides fold down, allowing cargo and materials to slide onto the deck. Sides are constructed with steel frame and formed steel panel.



2 Stake, Steel Cover + Rear Hinge Steel Cover (958-125) Combination of stakes and hinged sides. The rear tail gate is hinged for easy loading. Side panels are easily removed when not required. Sides are constructed with steel frame and formed steel panel.

3 Sided Stake with Steel Covering
(958-126) Side options where all panels are secured via stake pocket rails. Sides are constructed with steel frame and formed steel panel.



Gas Can Carrier (958-80)
Mounted to the rear upper frame, this carrier is adjustable to accept multiple gas can sizes and shapes.



Gun Rack (Sure Grip) (848-200)
Provides convenient and safe storage. Absorbs the shock of rough terrain and keeps your sights accurate.



Helicopter Lift Assembly (848-121)
Axle mounted at 4 corners, quick release point for helicopter sling connection.



Lightbar (Universal) (958-95)
Mounts directly to the hard top for installation of work lights, beacons, or spot lights. Requires 956-15 ROPS and 958-102 Hard Top. Lights not included.



Snow Plow (657-106)
80" (2,032 mm) wide, frame mounted snow plow, manual left and right positioning, requires 622-145 winch for raising and lowering operations.



Tail Lights (958-147)
Brake, tail light capable of mounting to hard top or flat bed. Complete with all mounting hardware.



Tire Carrier (958-75)
Mounted to the rear upper frame. Hold a spare tire.



Trailer (Amphibious)
4-wheel: up to 600 lb. (272 kg) load capacity. 8-wheel: up to 1,400 lb. (635 kg) capacity. Complete with 24" (610 mm) or 25" (635 mm) tires. Contact Retailer or see Web site for more information. Lincoln Electric Welder sold separately.



Debris Screen (958-99)
Fastens directly to the air intake to prevent debris from entering the engine compartment. Easily removable.

Universal Mounting System (959-01)
Quick change, 750 lb. (340kg) capacity, universal mount. Bolts directly to main chassis offering a secure structure for third party equipment.



Utility Box (958-168)
Custom, checker plate constructed of aluminum (.100"), stainless steel T-locks and gaskets. Lift-up lid and rear door include gas shocks and three-point lock. Provides full access to rear cargo area.



Winch (622-145)
Front mount 4,500 lb. (2,041 kg) Warn winch, complete with 30 ft. (9,144 mm) tow strap, snatch block, mounting plates and winch guard.

Winch Mounting Kit (622-131)
Designed to accept a 4,500 lb. (2,041 kg) winch. Modifications may be required to accept a non-WARN winch installation.



Winch Mount-Rear Receiver
(622-135) Allows winch to be placed at the rear of the vehicle. Comes complete with quick disconnect wiring.

PROTECTION

Bilge Pump (958-71)
Dual bilge pump kit evacuates standing water in lower body. Mounts to left and right chain wells, dash mounted ON / OFF switch.

BRAKE COOLING FAN (958-157)
105 CFM fan directing cool air to the service brakes.



BRUSHGUARD (958-165)
1-piece front mount brushguard to protect headlights and body.



Catwalk Mudflaps (958-93)
6.25" (160 mm) steel platform along the length of the vehicle. Includes a 10" (255 mm) mud flap.

Emergency Shut Off (XTD)
(958-200) Cuts off air supply at the air-intake to engine in case of run-away-engine due to Natural Gas injection.

HOOD FAN (958-89)
Mounts directly to the hood. Assists with engine compartment heat extraction. Complete with dash mounted ON / OFF switch.



ROPS-2 PERSON (956-15)
Driver and front passenger Roll Over Protection Structure complete with seat belts, certified to ISO 5700.



ROPS-4 PERSON EXTENSION
(956-16) Roll Over Protective Structure for 4 people (when rear bench seat is installed) complete with rear passenger seat belts, certified to ISO 5700. Requires 956-15 (2-person) ROPS kit.

TRACKS

18" (457 mm) RUBBER TRACKS
(958-88) (Not shown) Hinged rubber track, rubber sections wrap around 4 tires. Reduces ground pressure to 1.06 psi (7.23 kPa) at full payload.



15" (381 mm) QUAD RUBBER TRACKS
(849-150)
15" (381 mm) wide endless rubber track, rubber sections wrap around 2 tires. Reduces ground pressure to 1.91 psi (13.02 kPa) at full payload.



18" (457 mm) HD Rubber Tracks - 2 Pcs
(958-88HD) Fits over all 4 tires. Features UHMW-PE guides, aluminum backing washers, and heavy duty hinge lacing. Includes reinforced rims with impact resistant 24" (610 mm) turf tires.



18" (457 mm) HD Quad Rubber Tracks - 4 Pcs
(958-88-4HD) Fits over 2 tires, resulting in a 4-track configuration. Features UHMW-PE guides, steel backing plates and heavy duty hinge lacing. Includes reinforced rims and impact resistant 24" (610 mm) turf tires.

NOTE: When equipped with tracks, XT models are not fully amphibious, however water crossing is possible with a fording depth of 26" (660 mm).

FIRE FIGHTING AND SPRAYING SOLUTIONS ON REQUEST

Strength and Durability

- 3" (76 mm) tubular main chassis capable of transporting up to 1,500 lb. (680 kg) of total payload.
- 2" (51 mm) tubular upper frame is fastened directly to the main chassis, allows for easy accessory mounting and provides structural strength.
- The lower body is vacuum formed from High Molecular Weight Polyethylene featuring superior wear and impact resistance vs. fiberglass or steel even to temperatures as low as -40°F (-40°C), and it won't rust.
- Engine parts and transmission are well-protected from rocks and stumps to reduce the potential for damage.

Versatility

ARGO XT models feature an adaptable rear platform for mounting specialized equipment such as quick-change dump or cargo boxes, utility boxes, spraying equipment or fire and rescue solutions. The new universal mounting system facilitates the installation of most add-on solutions.

Low Environmental Impact

ARGO XT models feature eight 25" (635 mm), low pressure tires that provide an ultralight footprint on sensitive terrain. In comparison to other UTV and Tracked Vehicles, ARGO XT models feature the lowest ground pressure in the off-road industry and also meet all EPA and CARB "whole vehicle emission and evaporative" standards and regulations.

In addition, the fully sealed lower body not only keeps water and dirt from entering into the vehicle, it also prevents oil, hydraulic fluid, antifreeze and other fluids from leaking out of the vehicle and into the environment.

Low Cost of Ownership

The Kohler engines come with a limited three year engine warranty. The patented ADMIRAL triple differential transmission reduces drive line stress resulting in a low maintenance off-road machine currently not available on other vehicles in this market and at this price level.

- Optional chain lubrication system automatically lubricates all drive chains via pressurized pump and distribution block. Chains are lubricated once every 15 minutes or 1 hour for a 5-second period. The 1 quart (1 L) reservoir holds enough lubricant to keep the chains oiled for 40 to 120 hours of operation.
- Eight 1.50" (38 mm) diameter axles are contained in aluminum housings. Each axle is supported by two tapered roller bearings and sealed at each end. Lubrication is accomplished via oil bath within the axle housing.
- HS60HT – heavy series final drive chain is used to connect all eight axles to the output shafts of the ADMIRAL transmission.
- Fully floating, automatic chain adjusters allow the drive chain to freely float up and down based on chain tension. These long lasting and reversible nylon slider blocks support the top and bottom of each chain.
- Easy access to engine compartment and instrumentation as well as improved serviceability for all critical components.
- Screens and components are easily removed to facilitate maintenance.
- Large engine compartment allows quick and easy pre-trip checks of all fluid levels.

Proven Track Record

Since 1962, ODG has been an innovative manufacturer of gears and transmissions, amphibious extreme terrain vehicles, and rovers for future lunar exploration. ODG introduced the world famous amphibious ARGO in 1967 and has sold more than 50,000 vehicles around the globe.

Solid Investment

The all season capabilities of the ARGO XT models, in combination with a multi-purpose rear cargo platform, provide optimized utilization resulting in fast, year-round payback on investment. Proper operation and adherence to a scheduled maintenance program will ensure maximum uptime and usage for years to come.



Direct drive ADMIRAL steering transmission



3" Tubular frame and reversible chain adjusters



Heavy-duty axles



Where we proudly build the ARGO...

SPECIFICATIONS

ENGINE ¹	XTD	XTI
Engine	In-line 3-cylinder, naturally aspirated diesel	4 cycle OHV V-Twin, petrol
Model	Kohler/Lombardini KDW1003	Kohler Aegis LH 775
Torque ¹	36.9 lb. ft (50 Nm)	47.7 lb. ft (64.6 Nm)
Horsepower ¹	24 hp (17.6 kW)	30 hp (23.1kW)
Displacement	1028cc (62.7 cu. in.)	748cc (45.6 cu in)
Cooling	Liquid cooled	Liquid cooled
Starting	Electric	Electric
Electrical	65 amp alternator	60 amp alternator

PERFORMANCE ²

Speed	Land	17 mph (27 km/h)	
	Water	3 mph (5 km/h)	
Drawbar Pull ³		1,800 lb. (816 kg)	
Towing Capacity		2,000 lb. (907 kg)	
Load Capacity	Land	1,340 lb. (608 kg)	1,500 lb. (680 kg)
	Water	840 lb. (381 kg)	1,000 lb. (454 kg)
Seating Capacity	Land	2 persons - 4 optional	
	Water	2 persons	
Fuel Capacity		9.5 US gallons (36 L) 8 - 10 hours of operation	
Operating Temperature		All weather, all terrain, -40°F to +104°F (-40°C to +40°C)	

WEIGHT

Shipping Weight	1,750 lb. (794 kg)	1,600 lb. (726 kg)
Transport	Truck, trailer or helicopter lift	

CONVENIENCE

Electrical Output	Dual 12 V outlet
Storage	Dual glove box
	Large under seat storage compartment
Battery	AGM 775 CCA Group 34

CHASSIS

Frame	Powder coated, 3" (76 mm) tubular steel, welded construction
Final Drive	RS60HT heavy series roller chain connects 8 axles to the ADMIRAL transmission
Chain Adjusters	Automatically adjusting tensioner for each drive chain
Axles	1.50" (38 mm) diameter axles contained in an oil filled aluminum housing
Tires	ARGO AT189 25x12.00-9 NHS
Body	Vacuum formed upper body, lower hull and skid plate formed from High Molecular Weight Polyethylene (HMWPE)

TRANSMISSION

Transmission	Direct drive, ADMIRAL triple differential steering transmission
Gear Selection	Forward, Neutral and Reverse with HI and LOW selection
Clutch	Continuously Variable Transmission (CVT) with heavy duty drive belt
Brakes	Hydraulically activated disc brakes
Steering Brakes	Independent steering brakes with dedicated master cylinders

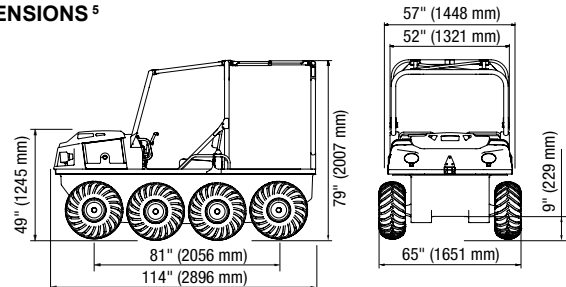
CONTROLS

Steering	Multi-position, one-piece, ergonomic handlebar steering
Park Brake	Ratcheting style mechanical park brake
Instrumentation	Centre mount, analog dash panel
Gauges	Tachometer with digital hour meter
	Speedometer with digital odometer
	Fuel gauge
	Volt meter
Warning Lights	Water temperature
	Park brake ON
	Low oil pressure
	Check engine warning

GROUND CLEARANCE & GROUND PRESSURE ⁴

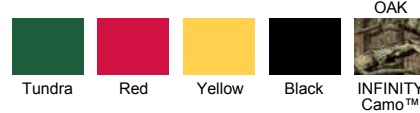
Ground Clearance	9" (229 mm) @ centre of vehicle
Ground Pressure	as low as 2.8 psi (20.5 kPa) with tires
	1.91 psi (13.02 kPa) with 15" (381 mm) tracks
	1.06 psi (7.23 kPa) or less with 18" (457 mm) tracks

DIMENSIONS ⁵



Overall Width
with 15" (381 mm) Rubber Tracks 72.5" (1841 mm)
with 18" (471 mm) Rubber Tracks 75.5" (1917 mm)

AVAILABLE ARGO COLORS ⁶



COLOR OPTIONS FOR ALL STEEL PARTS

ULTRA CHROME AND OTHER COLORS OR CUSTOM COATING AVAILABLE ON REQUEST



220 Bergey Court, New Hamburg
ON, Canada N3A 2J5
Toll Free: **1-877-274-6288**
Tel: (519) 662-4000
Fax: (519) 662-2421
www.argo.tv/catalog/XT-models

- (1) Calculated pursuant to the Society of Automotive Engineers (SAE) J1940.
- (2) Performance dependent on vehicle loading, terrain condition, operational specification. Vehicle capacity includes; driver, fuel, passengers, cargo and any installed accessories.
- (3) Draw-bar pull ratings based on ISO 7464-1983
- (4) Actual clearance and ground pressure dependant on full vehicle load, tire air pressure.
- (5) Dimensions and weights are approximate. Dependent on final build specification.
- (6) Colors are reproduced with great care, but may vary slightly on actual vehicles.

Some vehicle applications shown are for demonstration purposes, originating from third parties and not available from ARGO. In all cases vehicle load limits have been considered. For safety, always wear approved helmets and eye protection. When operating in water, always wear approved Personal Floatation Devices. Always remain seated while in the ARGO. When equipped with tracks, XT models are not fully amphibious, however water crossing is possible with a fording depth of 26" (660 mm). 678-130 • Printed in Canada 8/2014



Safety!
...always in Season!

treadlightly!
ON LAND AND WATER



Proud to be located in
Canada's
Technology
Triangle