

SPECIFICATIONS

HX260L

Tier 4 Final Engine

Net Power

SAE J1349 / 179 HP
(133 kW) at 1,950 rpm

Bucket Range

1.41 yd³ - 1.96 yd³
Standard Bucket
1.08 m³ (1.41 yd³)

Operating Weight

26,700 kg / 58,860 lb

ENGINE		
Make / model		Cummins QSB6.7
Type		4-cycle turbocharged, charger air cooled, diesel engine
Rated flywheel horsepower	SAE J1995 (gross)	190 HP (142 kW) at 1,950 rpm
	J1349 (net)	179 HP (133 kW) at 1,950 rpm
Max. torque		82.5 kgf·m (597 lbf·ft) at 1500 rpm
Bore X stroke		107 × 124 mm (4.21" × 4.88")
Piston displacement		6700 cc (409 in ³)
Batteries		2 × 12 V × 100 Ah
Starting motor		24 V - 4.8 kW
Alternator		24 V - 95 Amp

HYDRAULIC SYSTEM

MAIN PUMP	
Type	Variable displacement tandem axis piston pumps
Max. flow	2 × 228.2 l/min (60.3 gpm)
Sub-pump for pilot circuit (Gear Pump)	28.5 l/min (7.45 gpm)

CROSS-SENSING AND FUEL-SAVING PUMP SYSTEM

HYDRAULIC MOTORS	
Travel	Two-speed axial piston motor with brake motor with automatic brake
Swing	Axial piston motor with automatic brake

RELIEF VALVE SETTING

Implement circuits	400 kgf/cm ² (4,980 psi)
Travel	350 kgf/cm ² (4,980 psi)
Power boost (boom, arm, bucket)	380 kgf/cm ² (5,400 psi)
Swing circuit	300 kgf/cm ² (4,270 psi)
Pilot circuit	40 kgf/cm ² (569 psi)
Service valve	Installed

HYDRAULIC CYLINDERS

No. of cylinders bore X stroke	Boom: 135 x 1,345 mm (5.3 × 52.9")
	Arm: 145 x 1,620 mm (5.7 × 63.8")
	Bucket: 130 x 1,185 mm (5.1 × 46.7")

DRIVES & BRAKES

Drive method	Fully hydrostatic type
Drive motor	Axial piston motor, in-shoe design
Reduction system	Planetary reduction gear
Max. drawbar pull	21,100 kgf (46,500 lbf)
Max. travel speed (high / low)	5.8 km/hr (3.60 mph) / 3.4 km/hr (2.11 mph)
Gradeability	35° (70%)
Parking brake	Multi wet disc brake

CONTROL

Pilot pressure operated joysticks provide very-low-effort operation.

Pilot control	Two joysticks with one safety lever (LH): Swing and arm (RH): Boom and bucket (ISO)
Traveling and steering	Two levers with pedals
Engine throttle	Electric, dial type



OPERATING WEIGHT (APPROXIMATE)

Operating weight, including 5,850 mm (19' 2") boom, 3,050 mm (10' 0") arm, SAE heaped 1.08 m³ (1.41 yd³) bucket, lubricant, coolant, full fuel tank, full hydraulic tank, 5,100 kg (11,240 lb) counterweight and all standard equipment.

OPERATING WEIGHT

Shoes	Operating weight		Ground pressure
	Width mm (in)	kg (lb)	
Triple grouser	700 (28")	HX260L 26,400 (58,200)	0.46 (6.54)
	800 (32")	HX260L 26,700 (58,860)	0.41 (5.83)
	900 (36")	HX260L 27,000 (59,520)	0.37 (5.26)

SWING SYSTEM

Swing motor	Fixed displacement axial piston motor
Swing reduction	Planetary gear reduction
Swing bearing lubrication	Grease-bathed
Swing brake	Multi wet disc brake
Swing speed	10.8 rpm

SERVICE REFILL CAPACITIES

Refilling	liters	US gal
Fuel tank	400	106
Engine coolant	40	10.6
Engine oil	23	6.1
Swing device	7	1.85
Final drive (each)	4.5	1.19
Hydraulic system (including tank)	275	72.64
Hydraulic tank	160	41.25
DEF/AdBlue®	27	7.1

UNDERCARRIAGE

The X-leg type center frame is integrally welded with reinforced box-section track frames. The undercarriage includes lubricated rollers, idlers, track adjusters with shock-absorbing springs and sprockets, and a track chain with double or triple grouser shoes.

Center frame	X-leg type
Track frame	Pentagonal box type
No. of shoes on each side	51 EA
No. of carrier rollers on each side	2 EA
No. of track rollers on each side	9 EA
No. of rail guards on each side	2 EA

SPECIFICATIONS HX260L

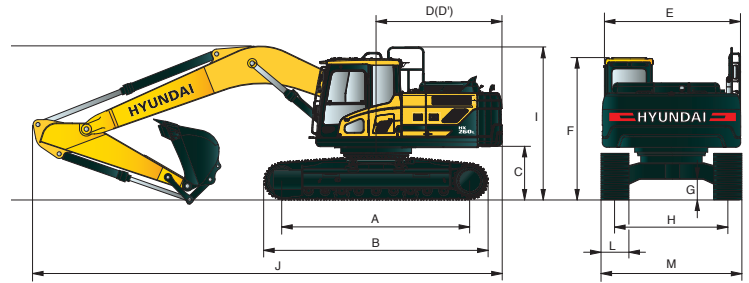
Tier 4 Final Engine

HX260L DIMENSIONS

Unit: mm (ft-in)

5.85 m (19' 2") boom and 2.1 m (6' 11"), 2.5 m (8' 2"), 3.05 m (10' 0"), 3.6 m (11' 10") arm

A	Tumbler distance	3,830 (12' 7")
B	Overall length of crawler	4,640 (15' 3")
C	Ground clearance of counterweight	1,110 (3' 6")
D	Tail swing radius	2,975 (9' 9")
D'	Rear-end length	2,870 (9' 5")
E	Overall width of upper structure	2,840 (9' 4")
F	Overall height of cab	3,050 (10' 0")
G	Min. ground clearance	480 (1' 7")
H	Track gauge	2,580 (8' 6")
I	Overall height of guardrail	3,260 (10' 7")

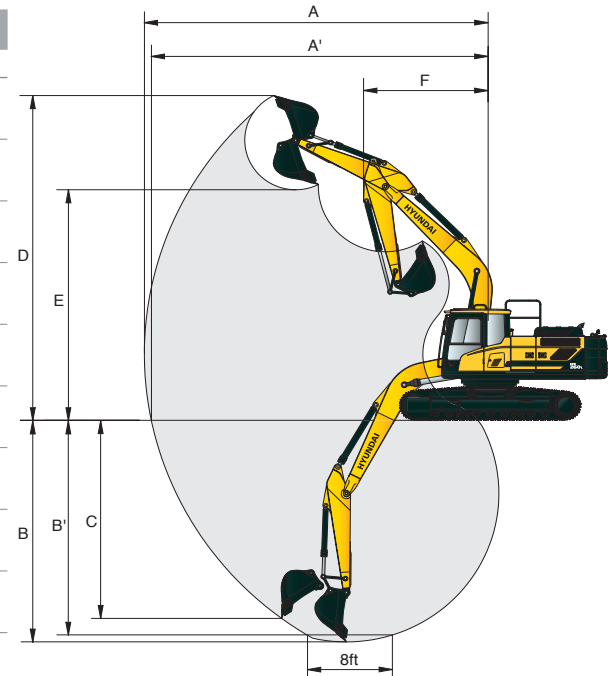


Boom length	5,850 (19' 2")			
Arm length	2,100 (6' 11")	2,500 (8' 2")	3,050 (10' 0")	3,600 (11' 10")
J Overall length	10,050 (33' 0")	10,000 (32' 10")	9,920 (32' 7")	9,910 (32' 6")
K Overall height of boom	3,530 (11' 7")	3,590 (11' 9")	3,220 (10' 7")	3,590 (11' 9")
L Track shoe width	600 (24")	700 (28")	800 (32")	900 (36")
M Overall width	3,180 (10' 5")	3,280 (10' 9")	3,380 (11' 1")	3,480 (11' 5")

HX260L WORKING RANGE

Unit : mm (ft-in)

Boom length	5,850 (19' 2")			
Arm length	2,100 (6' 11")	2,500 (8' 2")	3,050 (10' 0")	3,600 (11' 10")
A Max. digging reach	9,550 (31' 4")	9,870 (32' 5")	10,360 (34' 0")	10,870 (35' 8")
A' Max. digging reach on ground	9,360 (30' 9")	9,680 (31' 9")	10,190 (33' 5")	10,700 (35' 1")
B Max. digging depth	6,050 (19' 10")	6,450 (21' 2")	7,000 (23' 0")	7,550 (24' 9")
B' Max. digging depth (8' level)	5,840 (19' 2")	6,260 (20' 6")	6,830 (22' 5")	7,400 (24' 3")
C Max. vertical wall digging depth	5,480 (18' 0")	5,640 (18' 6")	6,150 (20' 2")	6,830 (22' 5")
D Max. digging height	9,450 (31' 0")	9,460 (31' 0")	9,670 (31' 9")	9,920 (32' 7")
E Max. dumping height	6,360 (20' 10")	6,420 (21' 1")	6,630 (21' 9")	6,860 (22' 6")
F Min. swing radius	4,420 (14' 6")	4,200 (13' 9")	3,980 (13' 1")	3,900 (12' 10")



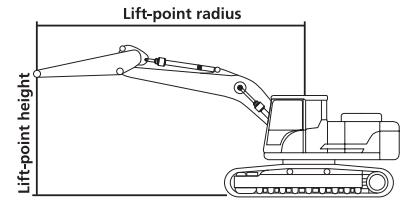
DIGGING FORCE

Boom	Length	mm (ft-in)	5,850 (19' 2")				[Power Boost]
	Weight	kg (lb)	2,460 (5,420)				
Arm	Length	mm (ft-in)	2,100 (6' 11")	2,500 (8' 2")	3,050 (10' 0")	3,600 (11' 10")	
	Weight	kg (lb)	1,420 (3,130)	1,450 (3,200)	1,540 (3,400)	1,600 (3,530)	
Bucket digging force	SAE	kN	156.9 [170.4]	156.9 [170.4]	156.9 [170.4]	156.9 [170.4]	
		kgf	16,000 [17,370]	16,000 [17,370]	16,000 [17,370]	16,000 [17,370]	
		lbf	35,270 [38,290]	35,270 [38,290]	35,270 [38,290]	35,270 [38,290]	
	ISO	kN	178.5 [193.8]	178.5 [193.8]	178.5 [193.8]	178.5 [193.8]	
		kgf	18,200 [19,760]	18,200 [19,760]	18,200 [19,760]	18,200 [19,760]	
		lbf	40,120 [43,560]	40,120 [43,560]	40,120 [43,560]	40,120 [43,560]	
Arm crowd force	SAE	kN	134.4 [145.9]	130.4 [141.6]	114.7 [124.6]	104.0 [112.9]	
		kgf	13,700 [14,870]	13,300 [14,440]	11,700 [12,700]	10,600 [11,510]	
		lbf	30,200 [32,790]	29,320 [31,830]	25,790 [28,000]	23,370 [25,370]	
	ISO	kN	139.3 [151.2]	134.4 [145.9]	118.7 [128.8]	107.9 [117.1]	
		kgf	14,200 [15,420]	13,700 [14,870]	12,100 [13,140]	11,000 [11,940]	
		lbf	31,310 [33,990]	30,200 [32,790]	26,680 [28,970]	24,250 [26,330]	

Note : Boom weight includes arm cylinder, piping, and pin
Arm weight includes bucket cylinder, linkage, and pin

SPECIFICATIONS HX260L

Tier 4 Final Engine



Lifting Capacity

Boom: 5.85 m (19' 2")

Arm: 3.05 m (10' 0")

Bucket: 1.08 m³ (1.41 yd³) SAE heaped

Shoe: 800 mm (32") triple grouser, CWT 5,100 kg (11,240 lb)

Capacities based on North American Standard Configuration in accordance with ISO condition 2 standard.



Rating over front



Rating over side or 360 degree

Lift-point height m (ft)		Lift-point radius										At max. reach		
		1.5 m (4.9 ft)		3.0 m (9.8 ft)		4.5 m (14.8 ft)		6.0 m (19.7 ft)		7.5 m (24.6 ft)		Capacity		Reach m (ft)
6.0 m (19.7 ft)	kg lb									*5,470 *12,060	4,760 10,500	*4,380 *9,670	*4,380 *9,670	7.70 (25.3)
4.5 m (14.8 ft)	kg lb						*7,720 *17,020	6,720 14,820	*6,800 *14,990	4,680 10,320	*4,340 *9,570	3,880 8,560	8.35 (27.4)	
3.0 m (9.8 ft)	kg lb				*11,790 *25,990	9,830 21,670	*9,120 *20,110	6,360 14,020	7,010 15,440	4,510 9,950	*4,460 *9,840	3,550 7,830	8.68 (28.5)	
1.5 m (4.9 ft)	kg lb				*14,540 *32,070	9,100 20,060	9,610 21,190	6,010 13,240	6,810 15,010	4,330 9,550	*4,760 *10,500	3,420 7,550	8.75 (28.7)	
Ground Line	kg lb		*7,220 *15,920	*7,220 *15,920	14,970 33,010	8,710 19,200	9,330 20,570	5,760 12,690	6,660 14,680	4,200 9,250	*5,300 *11,700	3,480 7,680	8.55 (28.0)	
-1.5 m (-4.9 ft)	kg lb	*8,210 *18,110	*8,210 *18,110	*12,750 *28,120	*12,750 *28,120	14,830 32,700	8,590 18,950	9,200 20,290	5,640 12,440	6,600 14,540	4,140 9,130	5,960 13,140	3,760 8,290	8.06 (26.4)
-3.0 m (-9.8 ft)	kg lb	*13,860 *30,550	*13,860 *30,550	*19,240 *42,410	17,430 38,430	14,920 32,890	8,660 19,100	9,230 20,360	5,670 12,500			7,020 15,490	4,420 9,730	7.23 (23.7)
-4.5 m (-14.8 ft)	kg lb			*18,960 *41,800	17,930 39,530	*13,430 *29,610	8,930 19,680					*9,680 *21,340	6,030 13,300	5.91 (19.4)

NOTES:

- Lifting capacities are based on ISO 10567.
- Lifting capacity of the HX Series does not exceed 75% of tipping load with the machine on firm, level ground or 87% of full hydraulic capacity.

- The Lift-point is bucket pivot mounting pin on the arm (without bucket mass).
- (*) indicates load limited by hydraulic capacity.



SPECIFICATIONS HX260L

Tier 4 Final Engine

ENGINE	STD	OPT
Cummins QSB 6.7 engine	•	
HYDRAULIC SYSTEM		
Intelligent Power Control (IPC)		
3-power mode, 2-work mode, user mode	•	
Variable power control	•	
Pump flow control	•	
Attachment mode flow control	•	
Engine auto idle	•	
Engine auto shutdown control		•
Electronic fan control	•	
CAB & INTERIOR		
ISO Standard cabin		
Rise-up type windshield wiper	•	
Radio / USB player	•	
Bluetooth / hands-free mobile phone system with USB	•	
Miracast	•	
24V DC to 12V DC converter	•	
Electric horn	•	
All-weather steel cab with 360° visibility	•	
Safety glass windows	•	
Sliding fold-in front window	•	
Sliding side window (LH)	•	
Lockable door	•	
Hot and cool box	•	
Storage compartment and ashtray	•	
Transparent cabin roof cover	•	
Sun visor	•	
Door and cab locks, one key	•	
Mechanical suspension seat with heater	•	
Pilot-operated adjustable joystick	•	
Console box height adjust system	•	
Cabin lights	•	
Cabin front window rain guard		•
Cabin roof—steel cover		•
Automatic climate control		
Air conditioner and heater	•	
Defroster	•	
Starting aid (air grid heater) for cold weather	•	
Centralized monitoring		
8" LCD display	•	
Engine speed or trip meter / accel.	•	
Engine coolant temperature gauge	•	
Max. power	•	
Low speed / high speed	•	
Auto idle	•	
Overload		•
Check engine	•	
Air cleaner clogging	•	
Indicators	•	
ECO gauges	•	
Fuel level gauge	•	
Hydraulic oil temperature gauge	•	
Fuel warmer	•	
Warnings	•	
Communication error	•	
Low battery	•	
Clock	•	

CAB & INTERIOR	STD	OPT
Seat		
Adjustable air suspension seat with heater	•	
Cabin FOPS/FOG		
FOG ISO 10262 Level 2	Front and top guard	•
(FOPS ISO 3449 Level 2)	Top guard	•
Cabin ROPS		
ROPS ISO 12117-2		•
SAFETY		
Battery master switch		•
Rearview camera		•
AAVM (All-Around View Monitoring)		•
Four front working lights (2 boom mounted, 2 front frame mounted)		•
Dual boom working lights		•
Travel alarm		•
Rear work lamp		•
Beacon lamp		•
Automatic swing brake		•
Boom holding system		•
Arm holding system		•
Safety lock valve for boom cylinder with overload warning device		•
Safety lock valve for arm cylinder		•
Swing lock system		•
Three outside rearview mirrors		•
OTHER		
Booms		
5.85 m, 19' 2"		•
Arms		
2.1 m, 6' 11"		•
2.5 m, 8' 2"		•
3.05 m, 10' 0"		•
3.60 m, 11' 10"		•
Removable clean-out dust net for cooler		•
Removable reservoir tank		•
Fuel pre-filter		•
Fuel warmer		•
Self-diagnostics system		•
Hi-mate Remote Management System	Mobile Satellite	•
Batteries (2 x 12V x 100 Ah)		•
Fuel filler pump (50 l/min)		•
Single-acting piping kit (breaker, etc.)		•
Double-acting piping kit (clamshell, etc.)		•
Rotating piping kit		•
Quick coupler piping		•
Quick coupler		•
Boom float control		•
One-pedal straight travel system		•
Pilot accumulator		•
Pattern change valve (SAE and ISO)		•
Fine swing control system		•
Tool kit		•
UNDERCARRIAGE		
Lower frame under cover (additional)		•
Lower frame under cover (normal)		•
Track shoes		
Triple grouser shoes (700 mm, 28")		•
Triple grouser shoes (800 mm, 32")		•
Triple grouser shoes (900 mm, 36")		•
Track rail guard		•
Full track rail guard		•

NOTE: Standard and optional equipment may vary. Materials and specifications are subject to change without advance notice. Contact your Hyundai dealer for more information.

PLEASE CONTACT



www.hceamericas.com

6100 Atlantic Blvd., Norcross, GA 30071

TEL (678) 823 7777 FAX (678) 823 7778