

ROUND BALERS

1 Series Round Balers



JOHN DEERE



INTRODUCING

A Better Round Baler

Productive. Efficient. Consistent. With more technology than ever,¹ find the round baler that's right for you in the John Deere 1 Series—just choose your bale size and then customize.²

The 1 Series offers new, higher capacity pickup options,³ bale automation, and near real time documentation for bale moisture, weight, and yield with wireless data transfer to John Deere Operations Center™ with free JDLink™ Connectivity.⁴

With a potential profitability increase of \$14.50 per acre,⁵ there are so many reasons to choose a John Deere round baler.

MEET THE “1.”

¹ Compared to our previous models

² The 1 Series Round Balers are compatible with nearly all tractors

³ Compared to our previous models

⁴ Activation required. Some additional accessories and/or components may be required. JDLink requires a cellular connection to transfer information from machine to JDLink website. Consult your John Deere Dealer for coverage availability.

⁵ USD. Based on a 2017 Clemson University Center for Ag Tech study on hay production using a hay yield monitoring system for direction of crop input rates compared to hay production without a hay yield monitoring system for direction of crop input rates. Implementation of yield data in prescribing nitrogen rates using the Clemson University Directed Prescriptions system suggested profit would have been \$14.50/ac greater per cutting than at the 60 lb-N/ac fixed rate. Estimated profitability increase is based on input cost values at time of study. Value of any yield monitoring system is dependent on how its information is used to improve management. Individual results may vary based on field and growing conditions and input costs.

Table of Contents

4-5 Overview

6-7 Pickups & Drop Floor

8-9 Belts & Drive System

10-11 Technology & Automation

12-13 1 Series Balers

14-15 V and C Series Balers

16-17 Parts & Attachments

18-19 Specifications

24 Dealer Support Network



WHY CHOOSE A

1 Series Round Baler

By the Numbers

80+¹

**More bales per day with
High-Capacity Pickup**

33% increase over MegaWide™ Pickup³

20%¹

**Faster gate speed,
increasing uptime**

\$14.50²

**Per acre
potential profitability**

¹ Compared to our previous models

² USD. Based on a 2017 Clemson University Center for Ag Tech study on hay production using a hay yield monitoring system for direction of crop input rates compared to hay production without a hay yield monitoring system for direction of crop input rates. Implementation of yield data in prescribing nitrogen rates using the Clemson University Directed Prescriptions system suggested profit would have been \$14.50/ac greater per cutting than at the 60 lb-N/ac fixed rate. Estimated profitability increase is based on input cost values at time of study. Value of any yield monitoring system is dependent on how its information is used to improve management. Individual results may vary based on field and growing conditions and input costs.

³ Available on John Deere R specification round balers only.

HIGHLIGHTS

INCREASED PRODUCTIVITY

The High-Capacity Pickup option increases potential bales per day and enables you to clear plugs from the cab.³ This keeps your baler productive for longer periods of time, working smoothly without costly delays.

IMPROVED TECHNOLOGY

The 1 Series features an 8-inch (20 cm) G5e color HD touchscreen display. Track important data with the moisture sensor and bale weighing systems and document it all with John Deere Operations Center.

BALE AUTOMATION

Reduce baling errors, get more hay baled, and get home sooner when using Bale Automation.

SMOOTH OPERATIONS

Use features like Net Lift Assist for easier and faster net installation.



PICKUPS & DROP FLOOR

MAKE THE MOST OF YOUR TIME

The higher capacity your pickup, the more efficiently your operation can run. That's why we offer three pickup options on the I Series.





MegaWide™ Classic Pickup

Available on the E Series 4x5 baler, MegaWide™ Classic Pickup delivers a 71 in (180 cm) pickup range and is available for crop types that may not require precutting.

MegaWide™ Plus Pickup

Found in our M Series Round Balers, the MegaWide Pickup makes baling easier, especially in wide or windblown windrows.

Designed to increase productivity per hour, it gathers more crops and handles higher-volume windrows.¹

High-Capacity Pickup

The R Series Round Baler models feature a High-Capacity Pickup, our highest capacity, most productive pickup yet. Increase your bales per day by 80+ bales.²

Offers a 33% increase over MegaWide Plus Pickup.³ Available with or without a precutter.

Hydraulic Drop Floor

Our innovative self-clearing hydraulic drop floor system on the High-Capacity Pickup allows you to clear plugs from your cab.

Instead of a typical friction clutch, these balers use a cut-out clutch and HD components.

¹ Compared to Regular Pickup

² Compared to previous models

³ Available on R Series Balers only.

BELTS & DRIVE SYSTEM

**STRONGER.
FASTER.
LONGER.**





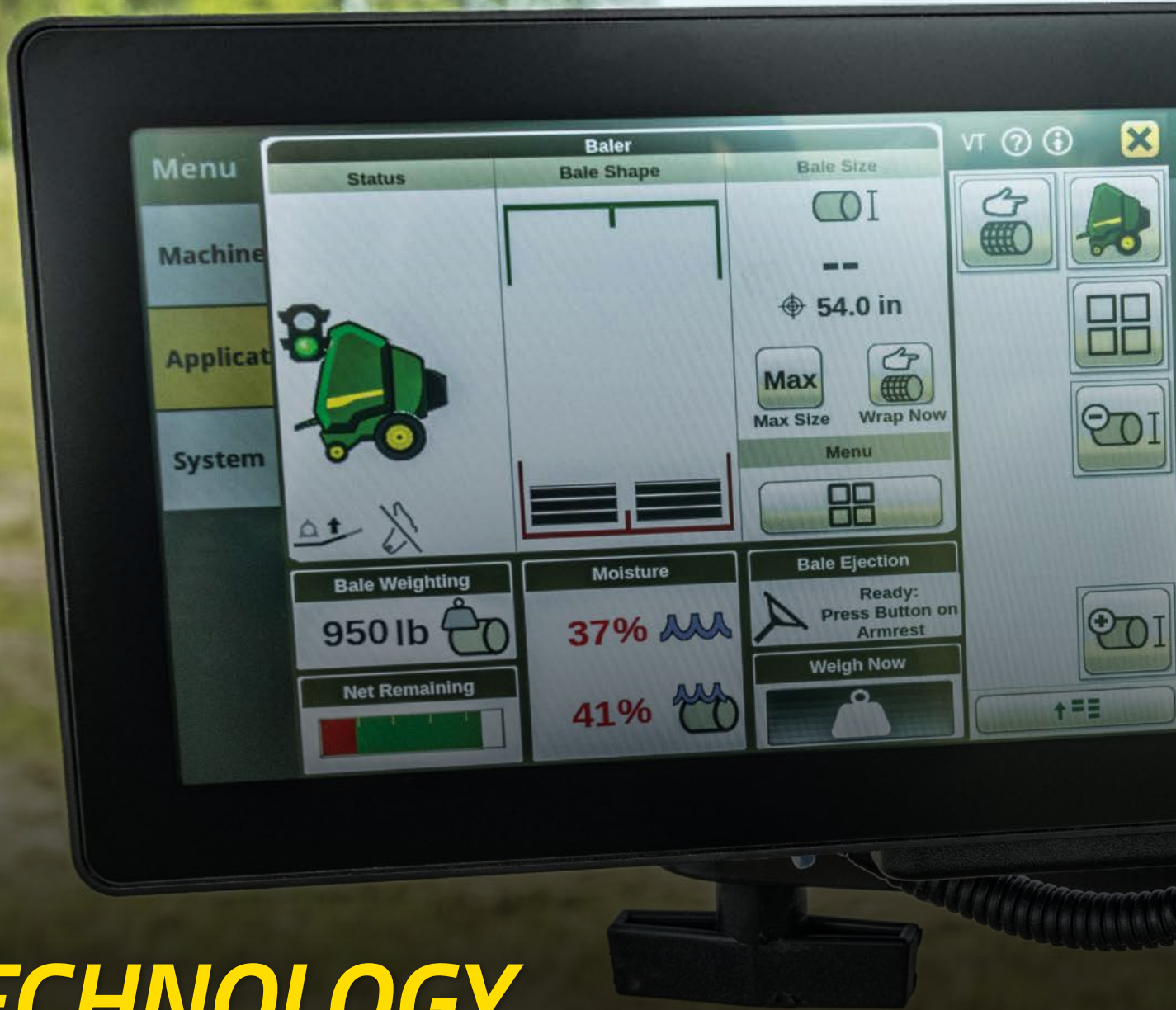
DiamondTough™ Belts

Our triple-weave, self-cleaning belts made of nylon and polyester are puncture and tear-resistant, leading to greater belt life even as you brush aside debris with ease. You can rely on these belts season after season to reduce crop loss and maintain crop quality.

Drive System: Worry-Free Operation

Our round balers have a 30-hour service window — that's nearly 20 hours more field time without maintenance compared to our previous models. Fewer, heavier drive chains require less adjustment and reduce component wear.¹

¹ Compared to previous models



TECHNOLOGY THAT HELPS

You need machines that make your life easier, not harder. That's why we've kept the I Series simple and intuitive to operate. Here are some highlights of the technology we're proud to offer.

HIGHLIGHTS

John Deere Operations Center™

Monitor and gain insights into your field performance, nutrient-use efficiency, bale count, yield, and moisture data through baling documentation with John Deere Operations Center. This information automatically transfers into Operations Center through the JDLink™ modem.* No USB needed.

G5e Display

You'll find a full-color, 8-in HD G5e touchscreen display monitor in the 1 Series Round Balers. Simply key in a function and you're on to the next expertly shaped bale. We offer "how to" videos on JohnDeere.com and JohnDeere.ca for the features enabled by this display.

Bale Scale and Moisture Sensor

Monitor the size and weight of bales as well as their moisture levels in real time, so that you can make calculated adjustments to get the best shaped and nutrient-dense bales possible. Avoid spoilage risks by carefully monitoring your moisture levels as well. This offers a whole new level of control.

Net Lift Assist, Net Wrap, and Net Lighting

Our Net Lift Assist and Net Wrap systems help you load rolls seamlessly. Load net with ease day or night with bright, clear Net Lighting and never miss a beat.

Baler Automation

Let your baler do the work for you with built-in Baler Automation. Just drive while your machine forms bales on autopilot, from monitoring bale diameter to automatically stopping your tractor at the moment the bale is at the size of your choice and ready to deploy. The Baler will then automatically apply net, eject the bale, and close the gate with no time lost between steps. Bale Automation reduces human errors and saves time on every bale.

*Activation/subscription required. Some additional accessories and/or components may be required. JDLink requires a cellular data connection to transfer information from machine to JDLink website. Consult your John Deere Dealer for coverage availability.

CHOOSE YOUR **BALER**

Start with your desired bale and the tractor you have. Then consider: How easy do you want to have it in the field - meaning what level of automation do you want?

Here's an overview of the differences between our 1 Series Balers.





The E Series

The E handles dry hay only and maintains peak efficiency and productivity while keeping things simple for the operator.

This series offers our MegaWide Classic Pickup.



The M Series

The M handles dry hay and wet, heavy silage with ease. This is our bread-and-butter baler, providing what you need with some very useful advanced technology.

This series offers our MegaWide Plus Pickup.



The R Series

The R can handle dry hay and silage and includes a High-Capacity Pickup with or without a Precutter. Highly productive, the R models also feature heavy-duty components for less wear and tear. This is the most advanced baler we offer. It includes a two-year warranty to protect your investment.¹

¹ Up to two years or 12,000 bales, whichever comes first. Other terms, conditions, exclusions, and warranty limitations apply. See your John Deere dealer or visit JohnDeere.com or JohnDeere.ca for details.

BALE SIZES & MODELS

4x5 Round Bales
451E, 451M, 451R

4x6 Round Bales
461M, 461R

5x5 Round Bales
551M

5x6 Round Bales
561M, 561R

FIND THE ROUND BALER FOR YOU

V451R, V461R, C451R & C461R

Here are a few alternative John Deere Round Balers that get the job done — and do it well — for you to investigate with your dealer.



V451R and V461R Round Balers

Giving you 4x5 and 4x6 bales respectively, these multi-crop capable balers feature an innovative design that creates high-quality precut bales, provides higher performance, and generates more uptime.

Some highlights include:

- Higher bale weight (15%) & density¹
- Speed bale ejection (4 seconds)¹
- Bale 10% more crop per hour¹
- Faster cut bale processing time with 13- or 25-knife options¹

¹ Compared to prior Deere models. All numbers are derived from John Deere field tests. Your results may be different depending on field conditions, crop conditions, and terrain.



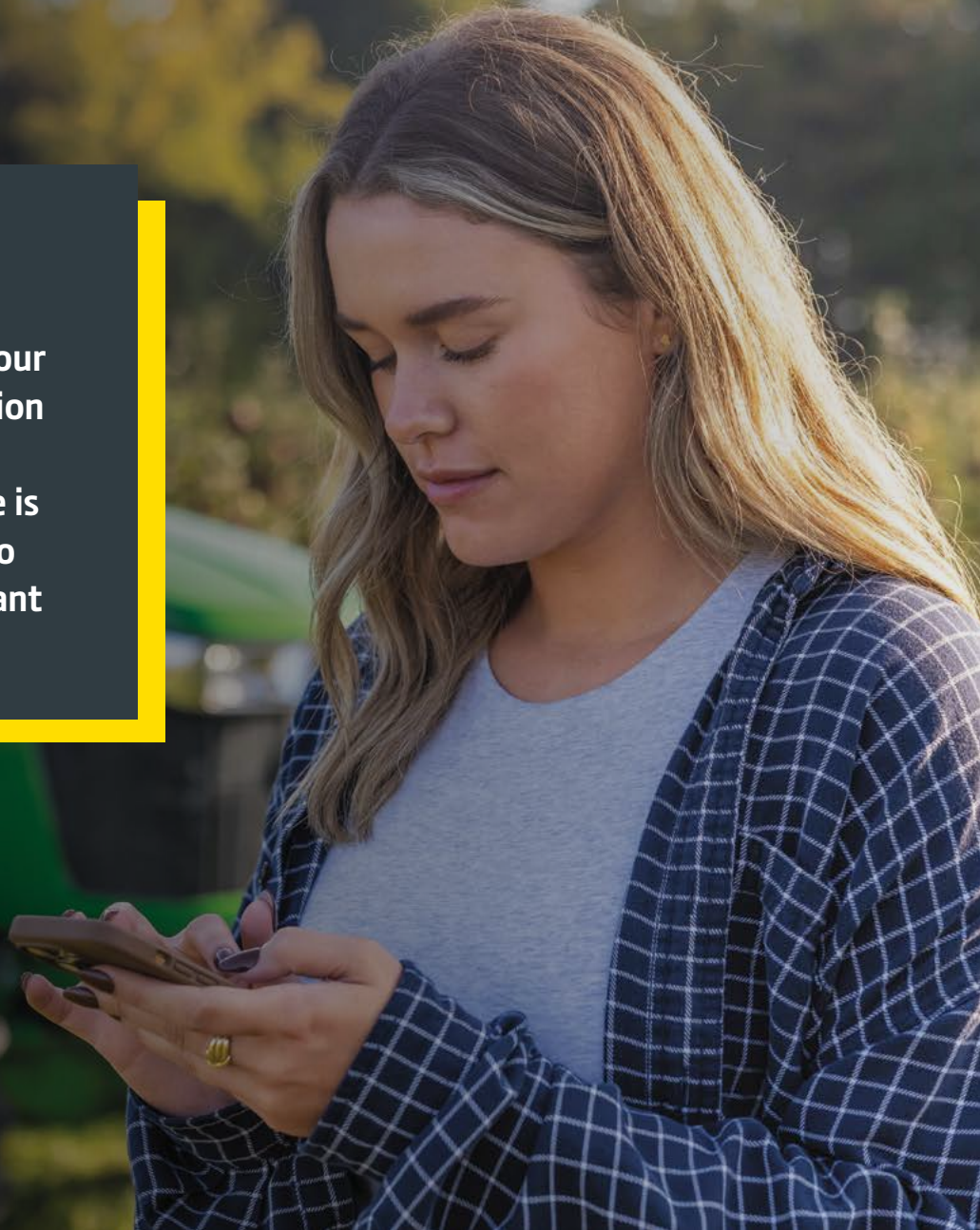
C451R & C461R Wrapping Balers

By combining the multi-crop capability of our V Series Balers with the efficiency and technology of our bale wrapping system, this is a true productivity powerhouse. It includes a high-capacity precutter, a top speed of 8 seconds to unload and close the gate, a net system, and fast wrapping arm (up to 60 bales per hour).



Get even **more** from your **baler**

Your John Deere dealer has an assortment of parts and attachments to complement your hay operation. From compression racks to moisture testers to preservative support, each one is designed to add productivity to your day. Here are a few we want to spotlight...





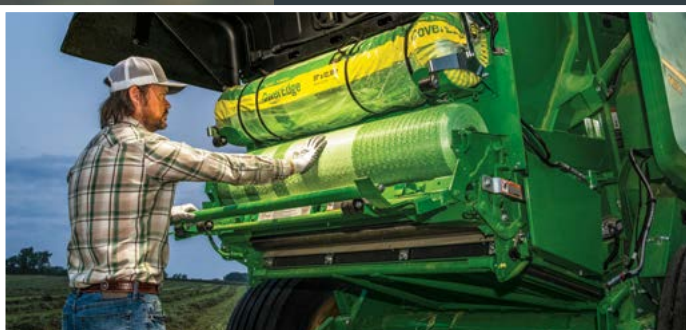
Net Wrap

John Deere offers multiple types of net wrap including Cover Edge, Edge to Edge, and B Wrap.



Net Lift Assist

Safely and easily load net wrap. The John Deere Net Lift Assist Kit, designed for a wide range of round balers dating back to the 7 Series, does the heavy lifting for you.



Net Wrap Lighting

Powered by the baler's tail-light harness, keep your net wrap area lit up in the dark.



GREEN-GARD™

Get in the field even when the forecast isn't ideal. With GREEN-GARD hay preservative, you can bale at up to 30% moisture level. This increase in uptime could be crucial during harvest. Seal in freshness and help prevent mold growth, heating, and spoilage in storage. Safe for use around livestock.



Round Baler Wear Parts Box

Make routine maintenance simpler and more convenient with the Round Baler Wear Parts Box. Avoid a trip to the dealer and repair your baler at home with this box containing the 25 most common wear parts on your baler. Parts are available for the 8, 9, 0, and 1 Series Balers. Be prepared for minor maintenance needs and keep your productivity on track!

Specifications

MODEL	451E	451M	451R	461M
KEY SPECS				
Belts - other - width	178 cm 7 in.	178 cm 7 in.	178 cm 7 in.	178 cm 7 in.
Density control	Hydraulic	Hydraulic	Hydraulic	Hydraulic
Bale size indication	Electronic display on monitor	Electronic display on monitor	Electronic display on monitor	Electronic display on monitor
MegaWide Plus pickup - Number of regular teeth	n/a	96	n/a	96
MegaWide Plus pickup - Number of mega teeth	n/a	16	n/a	16
High-capacity pickup - Number of middle teeth	n/a	n/a	120	n/a
High-capacity pickup - Number of mega teeth	n/a	n/a	8	n/a
BALE				
SIZE	1.2 x 1.5 m 4 x 5 ft	1.2 x 1.5 m 4 x 5 ft	1.2 x 1.5 m 4 x 5 ft	1.2 x 1.8 m 4 x 6 ft
Diameter	89 - 152 cm 35 - 60 in.	89 - 152 cm 35 - 60 in.	81 - 183 cm 32 - 72 in.	81 - 183 cm 32 - 72 in.
Width	117 cm 46 in.	117 cm 46 in.	117 cm 46 in.	117 cm 46 in.
Full-size bale in dry crop	454 kg 1,000 lb	449 kg 1,100 lb	449 kg 1,100 lb	748 kg 1,650 lb
Max. allowable for silage bale	n/a	794 kg 1,750 lb	794 kg 1,750 lb	998 kg 2,200 lb
BALER				
WEIGHT	Shipping - 1,701 kg 3,750 lb	Shipping dry - 1,733 kg 3,820 lb Shipping silage - 2,708 kg 5,972 lb	Shipping precutter - 3,691 kg 8,138 lb	Shipping dry - 2,800 kg 6,172 lb Shipping silage - 2,979 kg 6,568 lb
LENGTH				
Gate closed	361 cm 142 in.	361 cm 142 in.	361 cm 142 in.	371 cm 146 in.
Gate open	455 cm 179 in.	455 cm 179 in.	455 cm 179 in.	475 cm 187 in.
HEIGHT				
Gate closed	260 cm 102 in.	260 cm 102 in.	260 cm 102 in.	279 cm 110 in.
Gate open	325 cm 128 in.	325 cm 128 in.	325 cm 128 in.	368 cm 145 in.
WIDTH				
With narrowest tires				
With widest tires				
With standard tires	226 cm 89 in.	226 cm 89 in.	226 cm 89 in.	226 cm 89 in.
With opt. tires (Hi-Flotation)	n/a	244 cm 96 in.	244 cm 96 in.	244 cm 96 in.

All specifications accurate as of August 22, 2023.

461R	551M	561M	561R	V451R	V461R
178 cm 7 in.	178 cm 7 in.	178 cm 7 in.	178 cm 7 in.		
Hydraulic	Hydraulic	Hydraulic	Hydraulic		
Electronic display on monitor	Electronic display on monitor	Electronic display on monitor	Electronic display on monitor		
n/a	120	120	n/a		
n/a	8	8	n/a		
120	n/a	n/a	120		
8	n/a	n/a	8		
1.2 x 1.8 m 4 x 6 ft	1.5 x 1.5 m 5 x 5 ft	1.5 x 1.8 m 5 x 6 ft	1.5 x 1.8 m 5 x 6 ft		
81 - 183 cm 32 - 72 in.	89 - 152 cm 35 - 60 in.	81 - 183 cm 32 - 72 in.	81 - 183 cm 32 - 72 in.	0.8 to 1.6 m 2.6 to 5.25 ft	0.8 to 1.85 m 2.6 to 6.1 ft
117 cm 46 in.	157 cm 62 in.	157 cm 62 in.	157 cm 62 in.	1.21 m 3.97 ft	1.21 m 3.97 ft
748 kg 1,650 lb	658 kg 1,450 lb	998 kg 2,200 lb	998 kg 2,200 lb		
998 kg 2,200 lb	794 kg 1,750 lb	1,089 kg 2,500 lb	1,089 kg 2,500 lb		
Shipping precut - 3,930 kg 8,665 lb	Shipping dry - 1,955 kg 4,310 lb Shipping silage - 3,089 kg 6,812 lb	Shipping dry - 3,257 kg 7,182 lb Shipping silage - 3,389 kg 7,472 lb	Shipping precut - 4,239 kg 9,346 lb	4200 kg 9259 lb	4740 kg 10450 lb
371 cm 146 in.	361 cm 142 in.	371 cm 146 in.	371 cm 146 in.	With bale ramp - 5.5 m 18.04 ft	With bale ramp - 5.5 m 18.04 ft
475 cm 187 in.	455 cm 179 in.	475 cm 187 in.	475 cm 187 in.		
279 cm 110 in.	260 cm 102 in.	279 cm 110 in.	279 cm 110 in.	With smallest tires - 2.82 m 9.25 ft With highest tires - 2.87 m 9.42 ft	With smallest tires - 2.96 m 9.71 ft With highest tires - 3.01 m 9.88 ft
368 cm 145 in.	325 cm 128 in.	368 cm 145 in.	368 cm 145 in.		
				2.75 m (9.02 ft)	2.75 m (9.02 ft)
				2.92 m (9.58 ft)	2.92 m (9.58 ft)
226 cm 89 in.	226 cm 89 in.	226 cm 89 in.	226 cm 89 in.		
244 cm 96 in.	285 cm 112 in.	285 cm 112 in.	285 cm 112 in.		

SPECIFICATIONS

MODEL	451E	451M	451R	461M
BALE FORMING				
BELTS - OTHER	DiamondTough, triple-weave, single-ply belts	DiamondTough, triple-weave, single-ply belts	DiamondTough, triple-weave, single-ply belts	DiamondTough, triple-weave, single-ply belts
Number	6	6	6	6
Width	178 cm 7 in.	178 cm 7 in.	178 cm 7 in.	178 cm 7 in.
Texture	Diamond Tread friction surface belts	Diamond Tread friction surface belts	Diamond Tread friction surface belts	Diamond Tread friction surface belts
Density control	Hydraulic	Hydraulic	Hydraulic	Hydraulic
Bale size indication	Not available from factory, available as dealer-installed options	Electronic display on monitor	Electronic display on monitor	Electronic display on monitor
MEGAWIDE™ CLASSIC PICKUP				
Inside	155 cm 61 in.			
Flare	180 cm 71 in.			
Bars	4			
Number of teeth	72			
Tooth spacing	6 cm 2.6 in.			
Lift control	Adjustable height control			
Gauge wheels	Semi-pneumatic			
Stripper diameter	25.4 cm 10 in.			
MEGAWIDE PLUS PICKUP				
Inside		155 cm 61 in.		155 cm 61 in.
Flare		180 cm 71 in.		180 cm 71 in.
Number of regular teeth		96		96
Number of mega teeth		16		16
Gauge wheels		Semi-pneumatic		Semi-pneumatic
HIGH-CAPACITY PICKUP				
Type			High Capacity and Cutting (HC)	MegaWide High Capacity and Cutting (HC)
Inside			196 cm 77 in.	196 cm 77 in.
Flare			221 cm 87 in.	221 cm 87 in.
Number of middle teeth			120	120
Number of mega teeth			8	8
Gauge wheels			Semi-pneumatic	Semi-pneumatic
Stripper diameter			25.4 cm 10 in.	25.4 cm 10 in.
WRAPPING SYSTEM				
Control	Automatic to preset to bale size	Automatic to preset to bale size	Automatic to preset to bale size	Automatic to preset to bale size
Standard	Electric	Electric	Electric	Electric
Twine arms	2	2	2	2
Twine ball capacity	4	4	8	8

All specifications accurate as of August 22, 2023.

461R	551M	561M	561R	V451R	V461R
DiamondTough, triple-weave, single-ply belts	DiamondTough, triple-weave, single-ply belts	DiamondTough, triple-weave, single-ply belts	DiamondTough, triple-weave, single-ply belts	Variable - two endless belts + two front rolls + starter roll	Variable - two endless belts + two front rolls + starter roll
6	8	8	8		
178 cm 7 in.	178 cm 7 in.	178 cm 7 in.	178 cm 7 in.		
Diamond Tread friction surface belts	Diamond Tread friction surface belts	Diamond Tread friction surface belts	Diamond Tread friction surface belts		
Hydraulic	Hydraulic	Hydraulic	Hydraulic	Setting - from the display Softcore - density and diameter fully adjustable from the monitor	Setting - from the display Softcore - density and diameter fully adjustable from the monitor
Electronic display on monitor	Electronic display on monitor	Electronic display on monitor	Electronic display on monitor		
	196 cm 77 in.	196 cm 77 in.		2.2 m 7.22 ft	2.2 m 7.22 ft
	221 cm 87 in.	221 cm 87 in.		Tine to tine - 1.92 m 6.3 ft	Tine to tine - 1.92 m 6.3 ft
	120	120			
	8	8			
	Semi-pneumatic	Semi-pneumatic		Fixed or castor action	Fixed or castor action
High Capacity and Cutting (HC)			High Capacity and Cutting (HC)		
196 cm 77 in.			196 cm 77 in.		
221 cm 87 in.			221 cm 87 in.		
120			120		
8			8		
Semi-pneumatic			Semi-pneumatic		
25.4 cm 10 in.			25.4 cm 10 in.		
Automatic to preset to bale size	Automatic to preset to bale size	Automatic to preset to bale size	Automatic to preset to bale size	From monitor	From monitor
Electric	Electric	Electric	Electric	Net tying only • Capacity for three net rolls	Net tying only • Capacity for three net rolls
2	2	2	2	Optional - two independent twine arms	Optional - two independent twine arms
8	6	8	10	Ten twine spools	Ten twine spools



SPECIFICATIONS

MODEL	451E	451M	451R	461M
MONITOR				
Gate closed	Symbol on monitor	Symbol on monitor	Symbol on monitor	Symbol on monitor
Bale size	Digital	Digital	Mechanical and digital	Mechanical and digital
Near full bale	Audible, adjustable alert	Audible, adjustable alert	Audible, adjustable alert	Audible, adjustable alert
Full bale	Audible alert	Audible, adjustable alert	Audible, adjustable alert	Audible, adjustable alert
Twine arm position Indicator	Mechanical	Mechanical	Mechanical	Mechanical
Auto wrap	Activates when bale reaches preset size	Activates when bale reaches preset size	Activates when bale reaches preset size	Activates when bale reaches preset size
Oversize bale	Yes, audible and mechanical alerts	Yes, audible and mechanical alerts	Yes, audible and mechanical alerts	Yes, audible and mechanical alerts
Bale forming	Digital bale shape indicator	Digital bale shape indicator	Digital bale shape indicator	Digital bale shape indicator
Monitor console for tractor	Integrated Display	Integrated Display	Integrated Display	Integrated Display
TIRE SIZE				
Standard	11 L - 14	Dry - 11 L - 14 Silage - high-flotation 14 L - 16.4, 8 PR	Premium - XL high-flotation 21.5L-16.1, 8 PR	Silage - XL high-flotation 21.5L-16.1, 8 PR
Optional		Dry - high-flotation 14 L - 16.1, 8 PR With MegaWide Plus or HC		Dry and Precutter - High-flotation 14 L - 16.1, 8 PR
DRIVELINE				
Drive protection	Shear-bolt	Slip clutch or Cam Cutout Clutch	Premium - cut out clutch	Slip clutch or Cam Cutout Clutch
PTO speed	540 rpm	540 rpm MegaWide rpm	540 or 1,000 rpm	540 rpm or 1000 rpm
Type	Constant-velocity (CV)	Constant-velocity (CV)	Constant-velocity (CV)	Constant-velocity (CV)
PTO lockback collar on tractor hookup	No	Yes	Yes	Yes
PTO 60-degree free rotation	No	Yes	Yes	Yes
TRACTOR REQUIREMENTS				
Minimum PTO	Dry Hay and Silage - 42 kW 55 hp	Dry Hay and Silage - 42 kW 55 hp	MegaWide HC kW 80 hp 85 hp	Dry Hay and Silage - 48 kW 65 hp
Hydraulic SCV valves	One tractor selective control valve (SCV) is required when baler is equipped with electric twine wrap. Two tractor SCVs are required when baler is equipped with hydraulic twine wrap. Three tractor SCVs are required when baler is equipped with hydraulic twine wrap and a hydraulic pickup lift.	One tractor selective control valve (SCV) is required when baler is equipped with electric twine wrap. Two tractor SCVs are required when baler is equipped with hydraulic twine wrap. Three tractor SCVs are required when baler is equipped with hydraulic twine wrap and a hydraulic pickup lift.	One tractor selective control valve (SCV) is required when baler is equipped with electric twine wrap. Two tractor SCVs are required when baler is equipped with hydraulic twine wrap. Three tractor SCVs are required when baler is equipped with hydraulic twine wrap and a hydraulic pickup lift.	One tractor selective control valve (SCV) is required when baler is equipped with electric twine wrap. Two tractor SCVs are required when baler is equipped with hydraulic twine wrap. Three tractor SCVs are required when baler is equipped with hydraulic twine wrap and a hydraulic pickup lift.

All specifications accurate as of August 22, 2023.

461R	551M	561M	561R	V451R	V461R
Symbol on monitor	Symbol monitor	Symbol on monitor	Symbol on monitor	Yes	Yes
Mechanical and digital	Mechanical and digital	Mechanical and digital	Mechanical and digital	Yes	Yes
Audible, adjustable alert	Audible, adjustable alert	Audible, adjustable alert	Audible, adjustable alert	Yes	Yes
Audible, adjustable alert	Audible, adjustable alert	Audible, adjustable alert	Audible, adjustable alert	Yes	Yes
Mechanical	Mechanical	Mechanical	Mechanical		
Activates when bale reaches preset size	Activates when bale reaches preset size	Activates when bale reaches preset size	Activates when bale reaches preset size	Yes	Yes
Yes, audible and mechanical alerts	Yes, audible and mechanical alerts	Yes, audible and mechanical alerts	Yes, audible and mechanical alerts	Yes	Yes
Digital bale shape indicator	Digital bale shape indicator	Digital bale shape indicator	Digital bale shape indicator	Yes	Yes
Integrated Display	Integrated Display	Integrated Display	Integrated Display		
Premium - XL high-flotation 21.5L-16.1, 8 PR	Silage - XL high-flotation 21.5L-16.1, 8 PR	Silage - XL high-flotation 21.5L-16.1, 8 PR	Premium - XL high-flotation 21.5L-16.1, 8 PR		
	Dry and Precutter - High-flotation 14 L - 16.1, 8 PR	Dry and Precutter - High-flotation 14 L - 16.1, 8 PR		500/55-20 520/55R22.5 600/50-22.5	500/55-20 520/55R22.5 600/50-22.5
Premium - cut out clutch	Slip clutch or Cam Cutout Clutch	Slip clutch or Cam Cutout Clutch	Premium - cut out clutch	Cam-clutch	Cam-clutch
540 or 1,000 rpm	540 or 1,000 rpm	540 or 1,000 rpm	540 or 1,000 rpm	Available on all except MaxiCut HC 25 Premium - 540 rpm 124 kW 166.3 hp Optional or in base on MaxiCut HC 25 Premium - 1000 rpm 136 kW 182.4 hp	Available on all except MaxiCut HC 25 Premium - 540 rpm 124 kW 166.3 hp Optional or in base on MaxiCut HC 25 Premium - 1000 rpm 136 kW 182.4 hp
Constant-velocity (CV)	Constant-velocity (CV)	Constant-velocity (CV)	Constant-velocity (CV)		
Yes	Yes	Yes	Yes		
Yes	Yes	Yes	Yes		
HC 93 kW 125 hp	Dry Hay and Silage - 42 kW 55 hp	Dry Hay and Silage - 42 kW 55 hp	HC 93 kW 125 hp		
One tractor selective control valve (SCV) is required when baler is equipped with electric twine wrap. Two tractor SCVs are required when baler is equipped with hydraulic twine wrap. Three tractor SCVs are required when baler is equipped with hydraulic twine wrap and a hydraulic pickup lift.	One tractor selective control valve (SCV) is required when baler is equipped with electric twine wrap. Two tractor SCVs are required when baler is equipped with hydraulic twine wrap. Three tractor SCVs are required when baler is equipped with hydraulic twine wrap and a hydraulic pickup lift.	One tractor selective control valve (SCV) is required when baler is equipped with electric twine wrap. Two tractor SCVs are required when baler is equipped with hydraulic twine wrap. Three tractor SCVs are required when baler is equipped with hydraulic twine wrap and a hydraulic pickup lift.	One tractor selective control valve (SCV) is required when baler is equipped with electric twine wrap. Two tractor SCVs are required when baler is equipped with hydraulic twine wrap. Three tractor SCVs are required when baler is equipped with hydraulic twine wrap and a hydraulic pickup lift.		

You can depend on our Dealers.

Your local John Deere dealer can provide customized support based on your specific needs. They will get to know you and your hay operation, then advise you on what John Deere equipment, parts, and attachments may benefit you. They are also your expert on optimal machine maintenance and operation.



Don't hesitate to reach out today.

This literature has been compiled for worldwide circulation. While general information, pictures, and descriptions are provided, some illustrations and text may include finance, credit, insurance, product options, and accessories NOT AVAILABLE in all regions. PLEASE CONTACT YOUR LOCAL DEALER FOR DETAILS. John Deere reserves the right to change specification and design of all products described in this literature without notice. John Deere, the leaping deer symbol, and green and yellow trade dress are trademarks of Deere & Company. Copyright 2024 Deere & Company.



JOHN DEERE