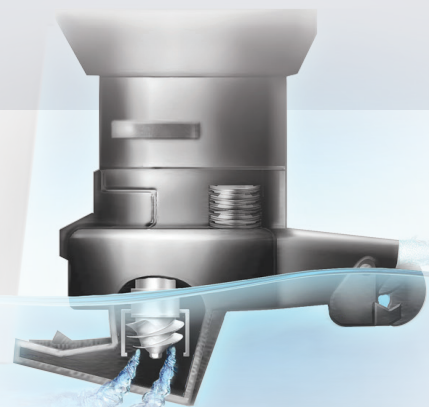


## JET POWER

Mercury offers the benefits of the 2.1L engine in 65hp and 80hp Jet configurations. These lightweight, durable jet-drive outboards deliver awesome hole shot, great handling and outstanding performance. Whether you're fishing shallow rivers or simply running in skinny water, it's nice to have the engine water intake level with the bottom of the boat.



## MAINTENANCE

- A graphic, hour-based maintenance decal is conveniently located under the cowl and provides a quick overview of routine maintenance intervals and a QR code to access additional information
- Easy access to regular maintenance points
- A no-spill oil drip tray beneath the automotive-style, spin-on oil filter catches any residual oil in the system after the sump is drained
- Maintenance-free valve train for life of the engine
- Easy-access freshwater flush



## ACTIVE TRIM

Active Trim dials in ideal trim settings, automatically adjusting to hole shots, turns and water conditions to ensure smooth handling and optimal efficiency at cruise.



HORSEPOWER	65 JET	75 EFI	80 JET	90 EFI	90 EFI CT	115 EFI	115 EFI CT
WOT RPM	5000-6000	4500-5500	5000-6000	5000-6000	5000-6000	5000-6000	5000-6000
Engine Type	L4 (8-valve, SOHC)	L4 (8-valve, SOHC)	L4 (8-valve, SOHC)	L4 (8-valve, SOHC)	L4 (8-valve, SOHC)	L4 (8-valve, SOHC)	L4 (8-valve, SOHC)
Displacement	2.1L (126 cu in)	2.1L (126 cu in)	2.1L (126 cu in)	2.1L (126 cu in)	2.1L (126 cu in)	2.1L (126 cu in)	2.1L (126 cu in)
Fuel Induction System	Performance-tuned scroll intake manifold	Performance-tuned scroll intake manifold	Performance-tuned scroll intake manifold	Performance-tuned scroll intake manifold	Performance-tuned scroll intake manifold	Performance-tuned scroll intake manifold	Performance-tuned scroll intake manifold
Starting	Electric start with SmartStart protection	Electric start with SmartStart protection	Electric start with SmartStart protection	Electric start with SmartStart protection	Electric start with SmartStart protection	Electric start with SmartStart protection	Electric start with SmartStart protection
Gear Ratio	Jet drive	2.07:1	Jet drive	2.07:1	2.38:1	2.07:1	2.38:1
Alternator	35 amp (441 watt)	35 amp (441 watt)	35 amp (441 watt)	35 amp (441 watt)	35 amp (441 watt)	35 amp (441 watt)	35 amp (441 watt)
Trim System	Power trim and tilt	Power trim and tilt	Power trim and tilt	Power trim and tilt	Power trim and tilt	Power trim and tilt	Power trim and tilt
Dry Weight*	378lbs (171kg)	359lbs (163kg)	378lbs (171kg)	359lbs (163kg)	363lbs (165kg)	359lbs (163kg)	363lbs (165kg)
Steering	Remote or Advanced Tiller	Remote or Advanced Tiller	Remote or Advanced Tiller	Remote or Advanced Tiller	Remote or Advanced Tiller	Remote or Advanced Tiller	Remote or Advanced Tiller
Shaft Length	20 in (508mm)	20 in (508mm)	20 in (508mm)	20 in (508mm) 25 in (635mm)	20 in (508mm) 25 in (635mm)	20 in (508mm) 25 in (635mm)	20 in (508mm) 25 in (635mm)

\*Dry weight: Lightest-version model, excludes engine oil, rigging, hardware.



**WARRANTY** | Mercury FourStroke outboards used for recreational purposes come with a standard three-year limited warranty and industry-leading three-year corrosion warranty.



2.1L L4

# 75/90 115HP

## FourStroke

65/80hp Jet

### LIGHTWEIGHT, QUIET, SMOOTH

- Lightest 115hp four-stroke on the market
- Quieter boating experience from tightly sealed, sound-absorbing cowl and tuned exhaust relief
- Significantly lower vibration from exclusive focused mount system
- Smooth shifting from innovative clutch design

### STRONG & EFFICIENT

- Superior acceleration from compact 2.1L engine
- Increased torque from performance-tuned scroll intake
- Optimal power from low-friction engine design
- Lifetime maintenance-free valve train



LEARN MORE AT [MERCURYMARINE.COM/FOURSTROKE](https://www.mercurymarine.com/fourstroke)



# 2.1L

With their light weight and high displacement, Mercury 2.1L FourStroke outboards power boats on plane quickly and deliver superior top speeds, without sacrificing fuel economy.

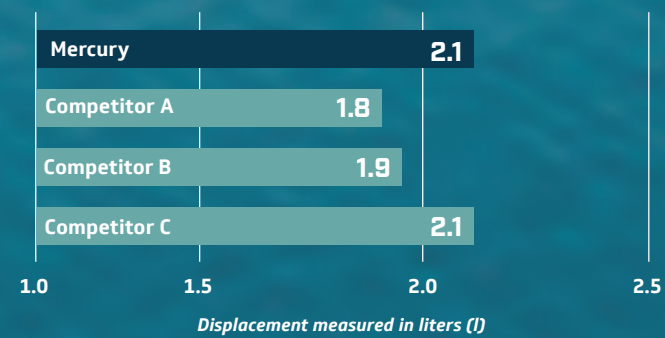
## QUICK AND POWERFUL

The 115hp FourStroke outboard features low weight and high displacement for abundant torque and immediate power.

### WEIGHT



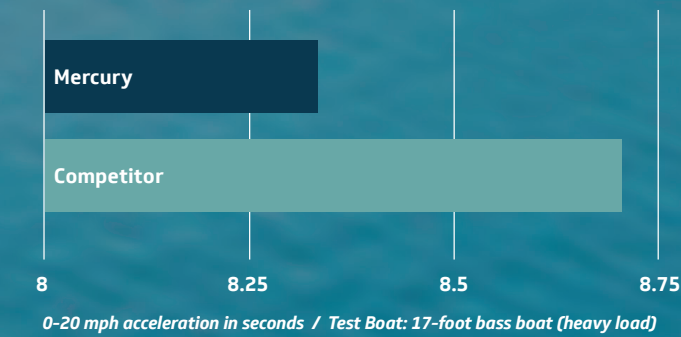
### DISPLACEMENT



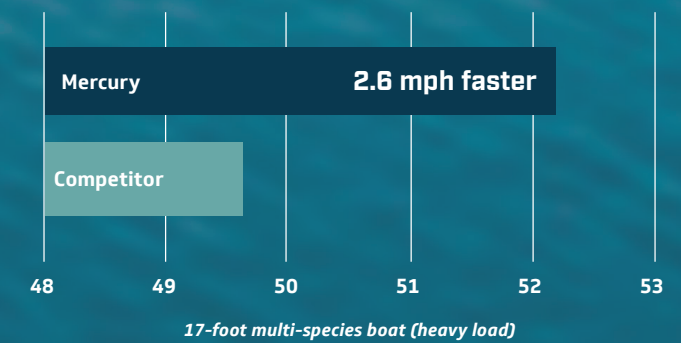
## ACCELERATION AND SPEED

The 115hp FourStroke outboard outperforms the leading competitor in acceleration and top speed.

### ACCELERATION



### TOP SPEED



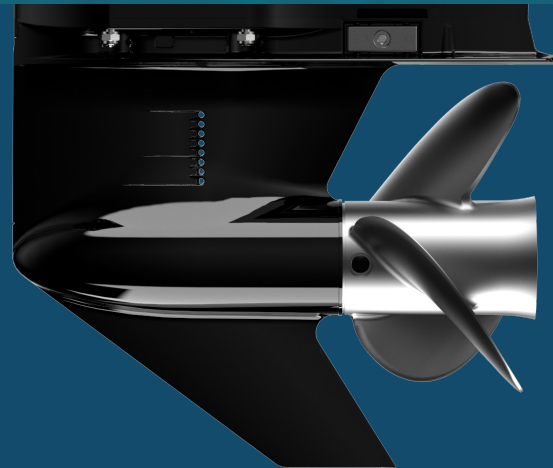
## GEARCASE SELECTOR

Application	Standard	Command Thrust
Standard Dual Log Pontoon	•	•
Dual Log Pontoon with Lifting Strakes or Tritoon		•
Fiberglass Bass Boat	•	
Fiberglass Multi-species Boat	<18'	18'+
Aluminum Multi-Species or Mod Vee Bass Boat	<18'	18'+
Saltwater Offshore Single and Twin Engine		18'+
Bay Boat	<18'	18'+
Technical Skiff	•	
Fiberglass Runabout		•
Commercial		•

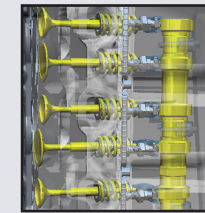
*NOTE: The above recommendations should be considered guidelines, not absolutes. Proper boat setup is always dependent on the individual boat model, engine height, propping and normal running loads. In general, a Command Thrust model provides more lift than a standard model, and will perform best on boats that typically run "wet" (boats that typically operate with more running surface in contact with the water while on plane). As such, there will be exceptions to the above recommendations. Your local Mercury Authorized Dealer can help you select the best model to maximize your boat's performance.*

## COMMAND THRUST

Mercury 90 and 115hp FourStroke outboards are available with the Command Thrust (CT) gearcase package, which features a larger gearcase and 2.38:1 gear ratio. The CT gearcase can turn a larger prop, providing greater acceleration, better handling, awesome maneuverability and superior control.

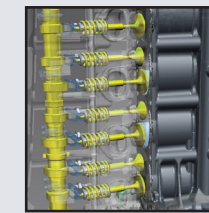


# INNOVATIVE ENGINE FEATURES



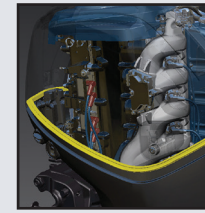
### LOW FRICTION

Mercury engineered these FourStroke outboards to rank among the lowest-friction engines on the water. When friction is reduced, less power is needed to run the engine, leaving more power available to propel the boat efficiently.



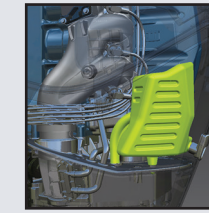
### HIGH DISPLACEMENT

Displacing 2.1 liters, these FourStroke outboards work smarter – not harder – for improved durability and longer life, not to mention greater hole shot, superior acceleration and awesome top speed.



### SOUND-ABSORBING COWL

The tightly sealed cowl is lightweight, compact and thermo-bonded to keep noise inside. Thanks to the top-mounted throttle body, intake noise is fine-tuned for a more pleasing sound.



### QUIET RIDE

The Mercury sound-suppression system incorporates an advanced cowl design and idle relief muffler system, making the 115hp FourStroke outboard 25% quieter at idle, 15% quieter at cruising speed and 50% quieter at WOT compared to the leading competitor.

