

# BiG M 450

EN SELF-PROPELLED MOWER CONDITIONER





# BiG M 450

## The key features

The BiG M 450 is the professional machine of choice when it comes to forage harvest efficiency. Its enormous agility, perfect visibility and the intuitive user interfaces are just a few examples of what sets the BiG M apart from the crowd. This means that, if you look for this unique level of forage harvesting performance, there is no alternative to the BiG M 450.

### Large working width

of 9.90 m for maximum efficiency

Page 4

### KRONE GPS Guidance and Section Control

for maximum efficiency and comfort

Page 24



### Heavy-duty cutterbar

with SafeCut foreign object safety protection

Page 8

### Variable conditioner

Conditioners with V-shaped steel tines or rollers (rubber or steel)

Pages 10 I 12

### Outstanding operator comfort

thanks to hydropneumatically suspended axles

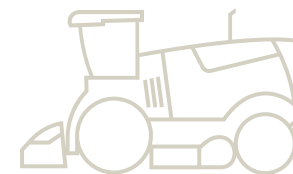
Page 16

### Liebherr engine with 449 HP –

Powerful and fuel efficient

Page 18





With the BiG M 450 KRONE presents another upgrade of its self-propelled mower. Whether on large or small areas, on flat or fairly steep slopes or in difficult ground conditions – thanks to its large working width and manoeuvrability as well as enormous power reserves and optimum weight distribution, the BiG M 450 is ideally equipped for any application worldwide.

*The dependable machine*

More information at





# The BiG M concept

Made for mowing



## Premiere in 1996

BiG M was unveiled to the public on 20 May 1996. . With the proven EasyCut cutterbars, the BiG M achieved a working width of 9.10 m at that time. The engine of the first BiG M generated 300 hp.



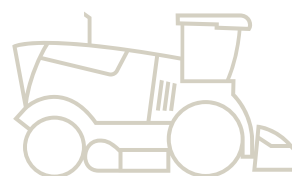
## BiG M 450

At Agritechnica 2017, KRONE introduced what was then the fifth generation of a BiG M mower. The mower conditioner received a comprehensive update and now offers a working width of 9.90 m. The new 6-cylinder, inline Liebherr engine with PowerSplit control develops 449 hp and has plenty of power in reserve.



## What you get from it

- **Optimum weight**  
distribution for great sward protection
- **Enormous manoeuvrability**  
based on a professional design
- **Optional swath mergers**
- **Low centre of gravity**  
for high stability
- **40 km/h**  
road travel
- **Best visibility**  
and quickest changeovers
- **Safe road travel**  
under 4 m transport height and under 3 m transport width







### Big but very agile

Driven by wheel motors and turning through a 50° angle, BiG M is extremely easy to manoeuvre and as such also offers great efficiency in small fields. The excellent front-to-rear weight distribution (64% to 36%) ensures that the mower copes well with difficult ground conditions.



### Three into one will go

When the swathing hoods on both mowers are closed the augers feed the material from the sides, windrowing it into one central swath. When cutting along field edges you can also close just one hood to present a clean job to the following harvester.



### Quick and safe

The BiG M 450 is comfortable to drive both in the field up to 25 km/h and on the road up to 40 km/h with the engine speed reduced to 1,250 rpm. courtesy of the hydro-pneumatic suspension on both axles. The running gear lowers hydraulically up to 15 cm to bring the transport height of the machine down to less than four metres.



1996



today



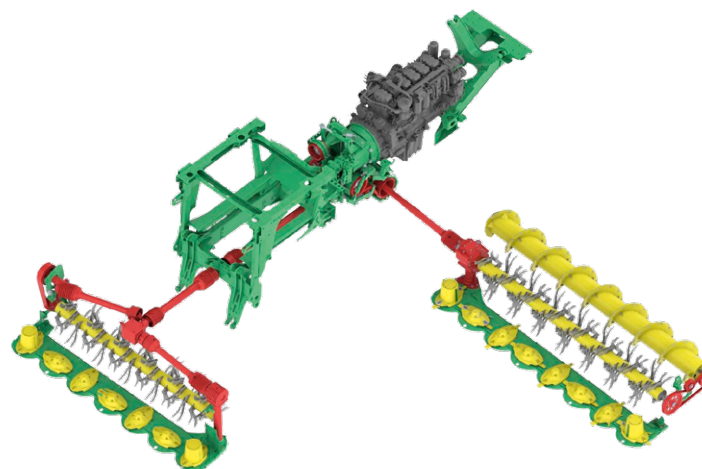
# The mowers

At full width

## Efficient and flexible

- **Direct drive**  
of the mower units via kraftbands and universal shafts
- **Stepless adjustment**  
of the cutting height via hydraulic cylinders
- **Automatic lateral adjustment of the front mounted mower**  
on curves and on slopes
- **DuoGrip centre-of-gravity suspension**  
on the side mounted mowers

The innovative KRONE BiG M 450 drive concept allows operators to achieve acreage output of more than 17 hectares per hour. The power flows from the axially mounted engine down the powerbands and driveshafts directly to the three mowers. And superior operator comfort comes from hydraulic cutting height control from the cab and fully hydraulic ground pressure control.



### Direct drivelines

All BiG M 450 engine power flows directly and efficiently to the three mowers. The transfer gearbox right in front of the axially mounted engine splits the power and sends it down belts and driveshafts to the individual mowers.



### Convenient set-up

Ground pressure and cutting height on all units are conveniently controlled from the cab. Operators can program two cutting heights and ground pressures to the system and select the setting from the joystick.







### DuoGrip centre-of-gravity suspension

The side mowers are suspended in ball sockets in a centre-of-gravity system, which ensures a uniform ground pressure across the full working width. The side pulling forces are absorbed by two parallel arms. The design results in a large pivot range for consistently clean cuts in sloping fields and along ditches and verges.



### Controlled break-back

The standard break-back system allows the side mowers to swing up and to the rear when hitting an obstacle. Once the obstacle has been passed the mower returns to its initial position.



### Stripeless cuts on slopes and in curves

The front mower is available with an optional sideshift function. With the help of sensors, the overcut of the mower is hydraulically adjusted depending on the steering and tilt angle. This reduces the driver's workload enormously and there are no strips when cornering or on slopes. Likewise, the inclination sensor also controls the distribution of traction to all four wheels. This significantly improves the traction of the BiG M and also protects the turf in the best possible way.



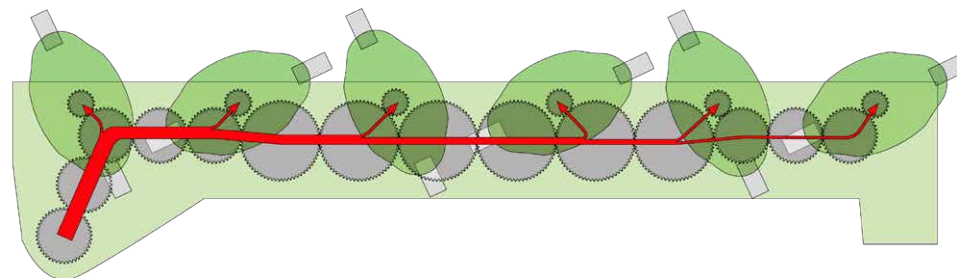
# The KRONE cutterbar

Heavy-duty cutterbar for long service life

## Inherently safe

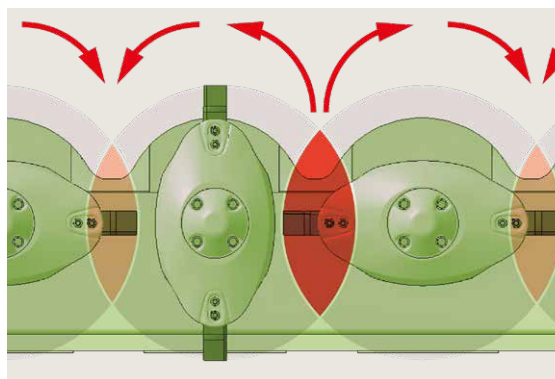
- All-round welded and lifetime-lubricated **heavy-duty cutterbar**
- **SafeCut**  
cutterbar protection system for each individual cutting disc
- **Satellite drive**  
for smooth power flow in the bar
- **SmartCut system**  
ensures a perfect cut
- **Added protection from wear**

The BiG M 450 uses disc mowers from the proven EasyCut series with an extremely stable cutterbar in a heavy-duty design. The power is transmitted from the rear via the gear-box into the cutterbar and transferred to the satellite wheels of the cutting discs via large, smooth-running spur wheels. KRONE SmartCut implements a generous overlap of those discs that turn away from each other, which translates into a perfect cut. The SafeCut system protects the cutterbar from damage by objects.



### Satellite driveline

The satellite drive in the cutterbar – developed by KRONE and successfully used worldwide for decades: Large spur wheels with up to 59 teeth transmit the main drive forces to the end of the cutterbar. The large-diameter gears rotate at reduced speeds, with a higher number of teeth meshing with the neighbouring gearwheels for even quieter running, ultimate efficiency and maximum longevity. The upstream ancillary drives drive only a single cutting disc each and are therefore subjected to low loads only.



### SmartCut for stripe-free cuts

As the cutting discs rotate both backwards and forwards in the opposite direction when they rotate in pairs, the overlap of the blade tracks must be correct for a clean swath. For stripeless cuts in light and young crops, we have therefore increased blade overlaps on the discs turning outwards. In addition, the blades turning to the rear are now further apart to promote smooth flows of large volumes of crop.



### Wide flotation skids

Extra-wide skids minimize the ground pressure and give maximum protection to the sward. As a side effect, they also protect the cutterbar from damage. Equipment with high-cut skids is optionally available which are recommended for a higher cut and for stony soils.





**KRONE**

# KRONE SafeCut

Watch our video  
and find more



## SafeCut

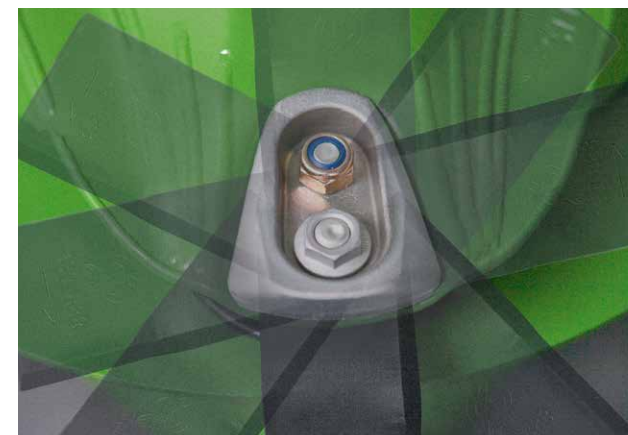
Each disc on the mower has its own individual impact protection. When the blade hits an obstacle, the shockload is transferred to a roll pin which breaks. As a result, the cutting disc moves 15 mm up on its threaded drive shaft and clear out of the risk zone and away from the neighbouring discs.

## Quick blade changes

The blades can be easily turned or replaced within a few seconds using the supplied blade lever. This leaves more time for mowing.

## Long service life

The blades rotate through a full 360 degrees avoiding obstacles and damage. The discs themselves are hard-faced to withstand wear more effectively.



*Simple handling with maximum operational safety*



# The tine conditioner

The largest on the market



Watch our video  
and find more



## Conditioner rotor with V-tines

The tine conditioner with a diameter of 64 cm conveys the forage past a height-adjustable chequer sheet and therefore grinds the protective wax layer of the plants. The V-tines are made from hardened steel and are arranged at a steep angle, treating the material very intensively and pulling it effectively through the unit.

## Steplessly adjustable

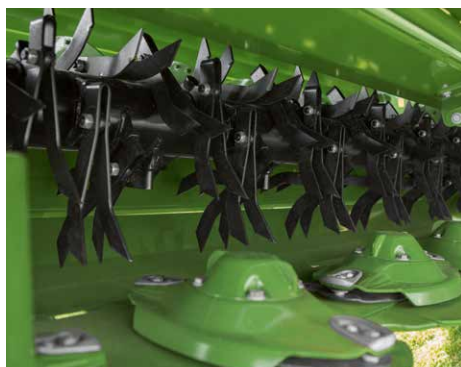
The gap between the tines and the baffle plate is adjusted steplessly by means of this lever. The smaller this gap, the more intensive is the treatment.

## Side drive

The side mounted mowers on the BiG M 450 are driven by universal shafts. A side-mounted gearbox offers a number of benefits: the conditioner rotors are not split but work effectively across the full machine width. By eliminating the central gearbox, which was previously mounted between the conditioner and the cutter-bar, our developers have created extra clearance for more material to pass through at low power inputs.

## Adjusting the rotational speed

The speed can be set to 700 or 1,000 rpm on the side input gearbox without tools. Adjusting the intensity of the conditioning effect to the prevailing conditions is quick and easy as the operator changes the rotor speed on the side-mounted gearbox speed from 700rpm to 1000rpm or vice versa without using tools.





## For short wilting times

- **High-performance conditioners**  
for crop stalks
- **Conditioning of the forage**  
at full working width
- **V-shaped steel tines**  
for intensive and gentle conditioning
- **Tool-free adjustment**  
of the conditioning intensity

Efficiency is one parameter in hay and forage harvesting, quality is another. The KRONE CV high-performance conditioner and its V-shaped steel tines distribute the forage over the entire working width of the cutterbar. 64 cm diameter and the helical arrangement of the tines ensure a continuous crop flow, high intake capacity and the optimum conditioning.





# The CR roller conditioner

Double-sided roller drive for maximum flexibility

## For leafy plants

- Choice of various conditioner versions – **steel tines or steel rollers/rubber rolls**
- **Hydraulic setting** of the conditioner intensity
- **Conditioning at full working width**

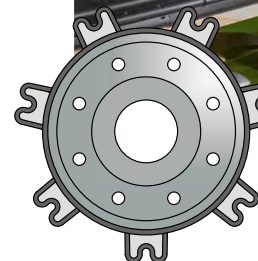
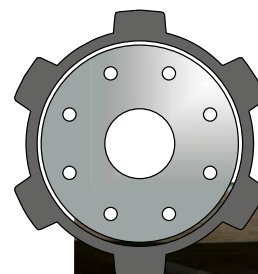
The **KRONE** roller conditioners are particularly well suited for intensive and yet gentle treatment of leafy forage such as clover or alfalfa. Depending on conditions, rubber or steel rollers (M-Rolls) are available for accelerated wilting.

### Rubber rollers for gentle treatment

The v-shaped profiled rubber rolls have a large diameter of 25 cm, offering enough capacity to take on huge masses and deliver intensive treatment without losses.

### Steel rollers for the tough jobs

Our M-Rolls steel rollers stand out by being particularly robust and hard-wearing. Designed to work in arduous conditions, they offer an extremely long service life and the special M-profile crimps every stalk even in massive crops.



Watch our video and find more



Watch our video and find more







### **Easy to adjust**

The roller gap is adjusted from the convenience of the cab – a comfortable and effective solution that helps you respond instantly to changing conditions, ensuring all haulms, stalks and blades are crimped intensively and uniformly and all leaves are treated gently.

### **High rotational speed**

Both rollers are driven by a robust gearbox. Revolving at up to 950rpm, the rollers provide effective processing for excellent feed.

### **Promoting forage quality**

The M-Rolls can cut drying times by up to 12%, significantly reducing the time the material spends in the field and also nutrient losses. At the same time, the material is not crushed, which also minimises nutrient loss. This leads to higher energy levels that translate into a better animal performance.

### **Gentle treatment**

With each roller being driven separately, the two rollers need not interlock to rotate – a detail that results in much quieter running and prevents overcrimping. In addition, the top roller has the flexibility to move up and out of the way of foreign objects, avoiding damage to the rollers and the driveline.





# Swath merging system

Maximum flexibility at the touch of a button



## Fingertip control

The swathing hoods open and close conveniently from the cab. At the touch of a button, the cut grass can be distributed over a wide area, deposited on one side or conveyed to the centre.



## Thought-through

Opened wide, the auger hoods present the material in a fluffy and uniform swath. BiG M 450 memorizes the previous setting of the hoods and retrieves it when the mowers lower into work. The new augers have 20% larger flights for higher throughputs and an even gentler crop feed.







## Versatile

- **Swath hoods** conveniently operated at the touch of a button
- Augers ensure a **clean and gentle crop feed**
- **Crops hardly touch the ground** – minimum contamination
- **Labour saving** for the following machines

Cutting, conditioning and producing one single swath – BiG M 450 completes three tasks in one operation. With the augers forming an integral part of the side mowers, they deposit the material on the swath that was formed by the front mower without the material touching the ground at all. This ensures minimal forage contamination and significantly increases the efficiency of the harvesting chain.

### Spreading the material at full width

When the swathing hoods are open the material flows over the turning augers and spreads across the full machine width for uniform and fast wilting thereby eliminating one tedding pass.



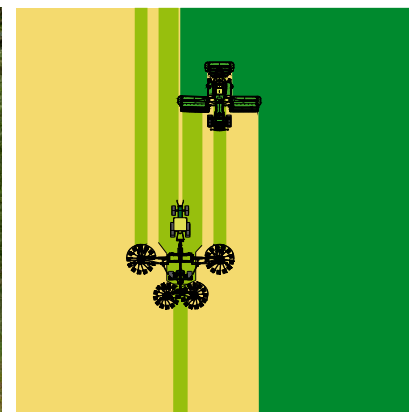
### Swathing

When both swathing hoods are closed the two augers feed the material directly to the central swath that was formed by the front mower – a strategy that substantially reduces crop loss and contamination and eliminates the raking pass.



### Independent swathing

Open one swath hood only and BiG M 450 swathes the material to one side. After one up-and-down pass, the mown forage is deposited from almost 20 m to less than 13 m. for easy follow-up with the four-rotor rake which groups it into one single swath. This enables a higher utilisation of the following harvesters and perfect forage quality.



*Three working steps combined into one operation*



# Traction drive and running gear

Top driving comfort – on field and road



## Agile and hard-wearing

The hydraulic wheel drive makes the BiG M 450 extremely manoeuvrable and is therefore also suitable for smaller areas. Each wheel is driven by a swashplate motor and a set of planetary gears. Unlike traditional drivelines which use universal joints, this type of ground drive is very robust and hard-wearing. An inclination sensor is used to optimally distribute the drive torque according to the wheel loads. This significantly improves the traction of the BiG M, especially on slopes.



## Plenty of underbelly room

The use of wheel motors eliminates axles that run close to the ground. In field mode, moreover, hydraulic rams automatically raise the running gear 15 cm, giving the machine an extremely generous ground clearance for work in high yielding crops.

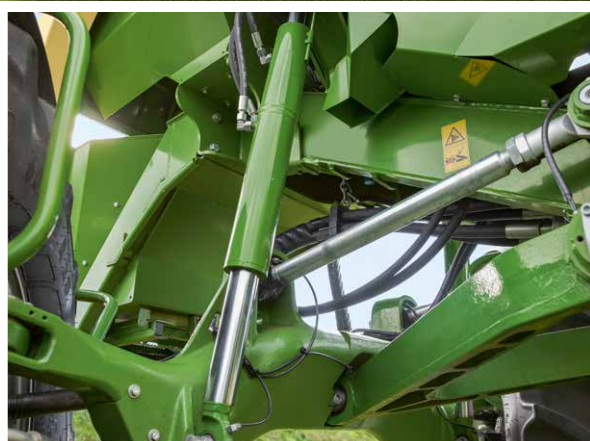


## Extremely manoeuvrable

- **Infinitely variable power transmission**  
via wheel motors
- **Engine speed reduced to 1,250 rpm**  
when driving on the road for low fuel consumption and extremely quiet running
- **Hydro-pneumatic axle suspension**  
for high operator comfort
- **Hydraulic axle height control adjusts ground clearance**  
to conditions

Wheel motors bring the power steplessly on the ground and make BiG M 450 fantastically easy to steer and manoeuvre. The axles boast hydro-pneumatic suspension for ultimate operator comfort and hydraulic height control, so that operators can flexibly adjust the ground clearance of the machine in field work and for road travel at reduced transport height. In difficult ground conditions, such as on slopes, the BiG M scores with its optimal weight distribution and low centre of gravity.





### Maximum ride comfort

The front and rear axles of the BiG M 450 are hydraulically height-adjustable and also have hydropneumatic suspension. features that offer operators an ultimate ride comfort both in the field and on public roads. For example, they can lower the running gear to bring the transport height to less than 4 m.



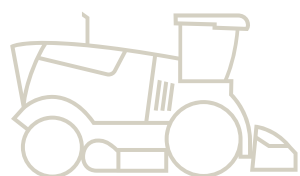
### Road travel

The maximum road speed is 40 km/h which is generated at 1,250 engine rpm. At the same time, engine speed is automatically controlled relative to the current ground speed and load. In the transport position, the BiG M is under 3 m wide and under 4 m high. Therefore, no exemption is required.



### Tyres

The BiG M 450 is clad with 800/65 R 32 (front) and 600/65 R 28 (rear) bar-tread flotation tyres as standard. which give the machine the necessary traction and protect the turf. Flotation Trac 800/60 R 32 (front) and 600/60 R 30.5 (rear) tyres from Vredestein are also available as an option for grassland applications. This tyre is very gentle on the sward.



# #TheGrassKing



# The engine

Powerful and flexible



## Clean engine technology

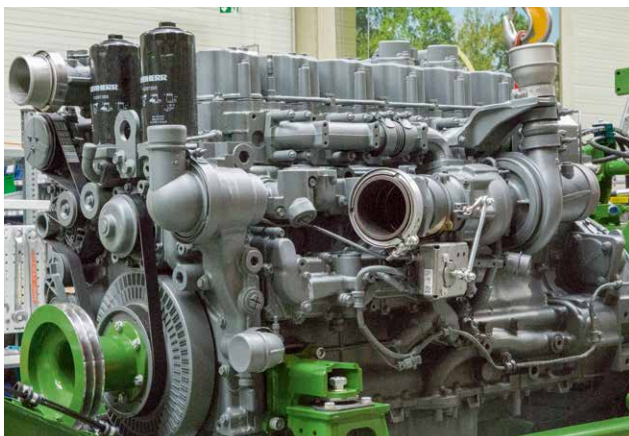
The Liebherr engine installed in the BiG M 450 complies with the Stage V emissions standard. Selective Catalytic Reduction (SCR) technology ensures clean combustion. The technology injects urea into the exhaust stream upstream of the catalyst which converts the nitrogen oxides that develop during the combustion process into natural nitrogen and water. The fuel tank holds 780 litres and the urea tank 80 litres to last through long working days without the need for topping up.

## Power on demand

The KRONE PowerSplit engine control monitors the engine speed. In Eco mode the engine starts off at 1,650 rpm and put out 354 hp. It changes into M mode when a higher output is detected. The output in M mode is 449 hp. Load limit control kicks in when engine speed droop is excessive. As output is adjusted automatically, consumption decreases noticeably.

## Smooth running

The engine and the transmission rest on silent blocks, which makes for quiet running and reduces the noise level.







## Smooth running

- **6-cylinder, 449 hp**  
Liebherr engine,  
Emission Stage V compliant
- **Maintenance interval**  
1,000 operating hours or one year
- Extremely fuel-efficient thanks to  
**PowerSplit engine control**
- Mounted on silent blocks and therefore  
**quiet running**
- **Large radiator**  
with passive rotor for optimum temperature  
control

The 449 hp Liebherr engine always provides the BiG M 450 with the power it needs with the aid of automatic control. Consequently, BiG M 450 will use less fuel in lower-yield crops. A new load limit control system monitors the engine speed and reduces the ground speed when engine speed is very low. Mounted on silent blocks, the engine runs very quietly in all situations.



### Optimum efficiency

A new top-speed control system allows operators to make even more efficient use of their machine. The system reduces the ground speed automatically as soon as the engine is revving within a specific range and thereby ensures the cut is always perfect.

### Active radiator cleaner

BiG M features an active cooler cleaning system, which comprises a rotary and fine-mesh screen that keeps debris out of the radiator. The rotating screen passes a suction fan that removes the debris from its surface. Generously dimensioned, the unit ensures the engine temperature is always in the optimum range.

### Optimum position

Mounting the engine centrally between the rear and front axle brings a number of benefits: short drivelines to the mowers, an ideal 64%:36% front/rear weight distribution and a low centre of gravity.



# The cabin

With feel-good character



## Panoramic view

Plenty of glazing and slim posts make for excellent visibility of all mowers. The double floor ensures noise levels are reduced. To ensure that you do not lose sight of your surroundings even in the dark, there is a comprehensive lighting package – optionally with LED headlights – on the cabin roof and in the side guards.



## Convenient steps

There are also offside steps now, so operators can clean the right windows conveniently. The steps are available with optional LED lights for safe access and exit at night.



## Best views

- **Large window screens**  
offer perfect all-round visibility
- **Maximum seating and operator comfort**
- **8" or 12" operating terminal**  
with colour display and touch screen
- **Optional LED package**  
for maximum lighting
- **Modern armrest with integral joystick**

Mounted on hydro bearings, the SilentSpace cab is particularly quiet, offers plenty of space and an ergonomically designed environment. In standard specification, the machine has the high-resolution 8-inch or 12-inch touch screen terminal where operators set up and monitor all machine functions. Further standard features are the multifunction joystick in the armrest, automatic climate control and the electric cooling box. More comfort is available from the optional LED package or the Premium comfort seat.





### The cockpit

The optional Activo Premium is a ventilated and heated seat from where all controls are in easy reach. The comfy seat ensures fatigue-free work during long days in the field. The 8-inch or 12-inch X-Touch terminal with touch screen records all major machine data and displays them on the high-definition colour screen where the operator enters many of the machine settings. A reverse drive camera with display screen is standard specification for perfect overview of all elements.



### Fingertip control

The ergonomic joystick is integrated in the armrest on the operator seat. Its controls are clearly marked for easy use. The joystick offers convenient control of all machine functions simply by pressing a button, and four of them are customizable to suit individual operator needs.



# Service and maintenance

A combination of efficiency and comfort



## Engine service

Thanks to the large and wide-opening hood, the engine is easily accessible, and convenient servicing and inspection. The service intervals are particularly long – 1,000 hours or one year.



## Plenty of fuel in store

The large 780-litre diesel and 80-litre urea tanks do not call for many refill stops. The filler necks of both tanks are readily accessible via safe steps and a platform.



## Auto lubrication

Most of the lubrication points are supplied via an automatic central lubrication system, which services all points sensor controlled – a system that ensures the machine is given optimum attention.







## Kitted out perfectly

- **Sensor-based auto lubrication**
- **Maintenance intervals for the engine**  
1,000 operating hours or one year
- **Optimum accessibility**  
thanks to wide opening covers
- **Plenty of storage space**  
for tools, blades and small parts
- **Large 780-litre diesel**  
and 80-litre urea tanks

BiG M 450 is specified with many details which make service and maintenance a lot easier and reduce the time spent on these jobs. The sensor controlled automatic lubrication system supplies oil to most greasing points.



### Plenty of stowage space

Two stowage compartments are arranged underneath the panels between the cab platform and the front wheels. The battery compartment and the main switch are located above the left front wheel and there is space for small parts to the left. The compartment on the offside wheel stores water for the wipers and for operators to wash their hands and offers room to store wedges and more assorted parts.



### Large storage compartment

The BiG M has a large storage space in the rear. That stores two blade holders and the spanner for the blades plus a toolbox.



### Easy maintenance

The blades are easy to get at for quick change and replacement after the operator folds back the cover including the curtain.



# Additional equipment

Special features for maximum harvesting success



## KRONE GPS Guidance – The KRONE steering system

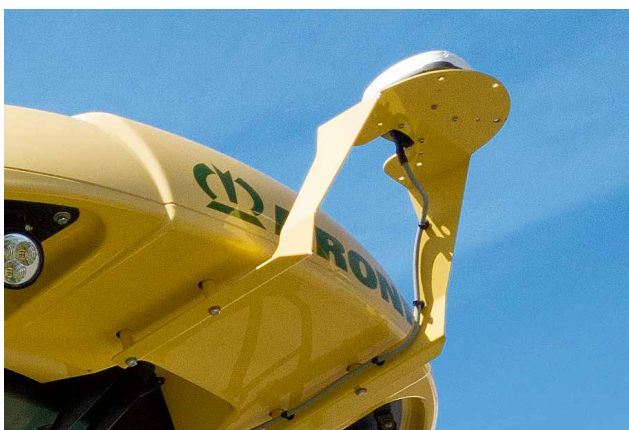
KRONE GPS Guidance makes operating the BiG M 450 as convenient and safe as it can get. Thanks to this automatic steering system and the correction signals received via a GPS receiver, the BiG M can drive over the area to be harvested true-to-track with minimal overcut and no misses. For the driver, this means fatigue-free work and a high level of comfort.

## Automatic turning at the headland

With the KRONE GPS Guidance Plus, the BiG M processes an area fully automatically. Endless lanes are planned either in advance in the office or directly on the terminal. When the system is activated, the BiG M takes over steering, including automatic turning at the headland, as well as lifting the mower units in and out and speed regulation fully automatically. This allows the driver to concentrate fully on monitoring the process and surroundings.

## Automatic control

The Section Control system automatically raises and lowers the individual mower units to the working position on the headland. In this way, multiple processing of the cut grass is avoided for the benefit of forage quality and the driver's workload is once again greatly reduced.







## On request

- **KRONE GPS Guidance and Section Control** for reduced operator stress
- **High-cutting skids**  
for cuts of more than 90 mm in height
- **Mulcher conversion kit**  
with 9.20 m working width
- **LED light kit**  
for 360° illumination

A wide range of further extras are available as factory-installed options to boost operator comfort and create an even more pleasant operator environment.



### Hydraulic side guards

The side guards on the mowers fold up before the machine moves into transport position to ensure transport width does not exceed 3 m. The end curtains can be folded hydraulically as an option and for enhanced operator comfort.

### BiM M turns into a mulcher

The Perfect TriGant mulcher units turn BiG M into a convenient SP mulcher of a 9.20 m working width. Operators set the ground pressure hydraulically from the cab for optimum contouring. The Perfect TriGant flail mulcher is sold and serviced exclusively by Van Wamel B.V. (Phone: +31 (0) 48759244).

### Lights all round

Optional LED working lights (360° illumination) turn night into day. Optional LED lights on the steps and all service points make your work a lot easier in poor light conditions.



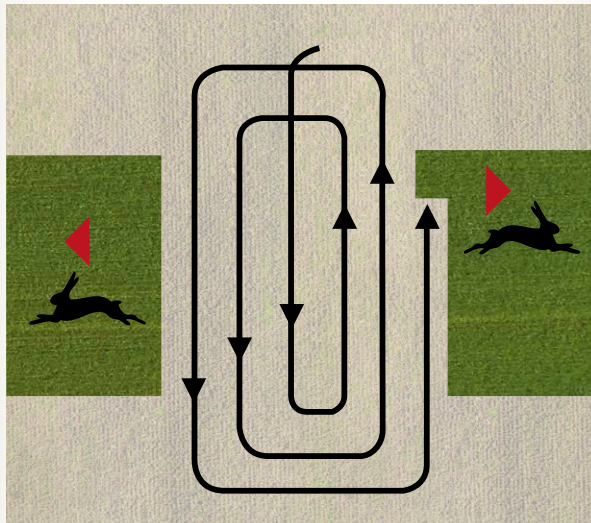
# Wildlife protection

During the breeding season

## Join in and let's take preventive measures!

There are many different approaches to protect local wildlife and reap a high-quality forage feed. The Hubertus siren for game rescue may contribute to initial deterrence but it will never replace communication between farmers, contractors and hunters, as searching the areas is indispensable. Applying the proper mowing strategy is also of key importance.

### Mowing strategy





## My 'First Cut' check list

Hunters informed about the mowing time ✓

Area searched for wildlife and nests ✓

Hubertus wildlife warning ✓  
system used



Mowing strategy correctly chosen ✓  
(mowed from the inside to the outside)

Watch our video  
and find more





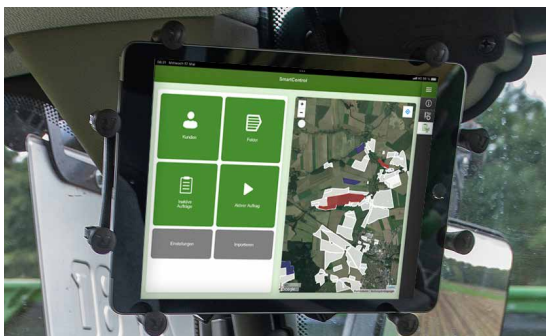
# Data management

Live data always in view



## Automatic data acquisition

The machine data is automatically recorded with the SmartConnect telemetry unit when the machine is started. In this way, position, work output, diesel consumption and all other data are recorded in real time. With the aid of the integrated multi-network SIM card, the box always dials into the mobile radio network which offers the best signal strength. This improves data transmission and prevents possible data loss.



## KRONE SmartControl order management

KRONE SmartControl allows orders to be received, started, stopped and sent via the X-Touch terminal or mobile terminals in conjunction with SmartConnect. This means that orders can be enriched with information, such as customer and field names, directly in the cab and evaluated by KRONE SmartTelematics. In addition, orders can also be pre-planned and field boundaries imported via farm management systems connected to the agrirouter.



## Data transmission

KRONE SmartTelematics in the myKRONE.green portal allows the machine data to be viewed and evaluated in real time as well as retrospectively. In addition, the data can be sent directly to a farm management system via the universal data hub agrirouter.



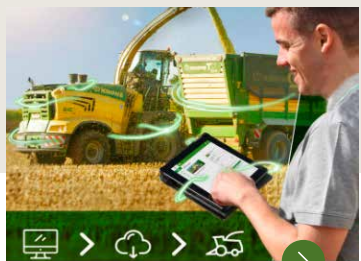
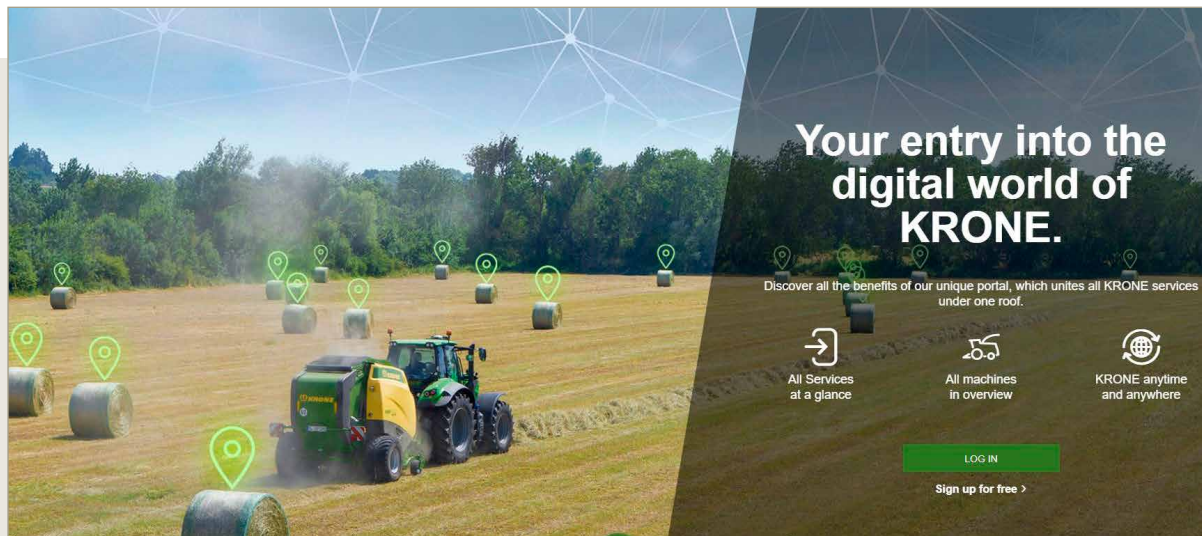


# mykrone.green

Would you like to have all your **KRONE** machines and all **KRONE** services listed at a glance? No problem, the solution is simple! Create your personal account at **mykrone.green** and benefit from a new approach that makes you more efficient and organised.

## How does it work?

At the bottom of this page you find some of the few pillars that form part of the **KRONE** world, but of course these are not all. If you would like more information, please contact your sales partner or us directly – we will be happy to offer advice!



### **E-SOLUTIONS**

Would you like to equip your machine with **KRONE Section Control**, with extra engine performance or other software solutions? And preferably instantly? No problem with the E-Solution Shop! With a simple click of your mouse, you can opt into an extra machine feature on conditions that work best for your farm!



### **SMART TELEMATICS**

**KRONE Smart Telematics** for fleet managers to access and 'read' a machine. Keeping them on top of what's going on in the harvest chain without having to make a single phone call. Also, the tractor drivers will have exact information on where to find the forage harvester.



### **TRAINING**

**Qualification and continuous training of drivers** and service staff are the pillars of your success in a world where customer demands increase and technology advances.



### **PARTS SHOP**

The only way to ensure that your machine will maintain its top quality in the future is to use spare parts from the original manufacturer. Easily research and order your **KRONE** original spare parts using the **Parts Shop** of our sales partners.





# Technical data



BiG M 450 CV

BiG M 450 CR

<b>Engine</b>	Engine model	Liebherr D946 A7-05	
	No. of cylinders	6	
	Engine capacity	12 Litres	
	Max. output to ECE R120 and 1,650 rpm	330 / 449 kW/hp	
	Max. output to ECE R24 and 1,650 rpm	310 / 422 kW/hp	
	Rated speed	1,650 rpm	
	Diesel/SCR tank capacity	780 / 80 l	
<b>Traction drive</b>	Model	Infinitely variable hydrostatic drive via wheel motors	
	Work rate	Max. 25 km/h (max. 15,53 mph)	
	Transport speed	40 km/h (at 1,250 rpm)	
	4WD	Standard	option
	Traction Control	Standard	
<b>Axles</b>	Steering angle	53 deg.	
	Rear axle steering	yes	
	Front/rear axle suspension	hydro-pneumatic	
<b>Mowers</b>	No. of mowers	3	
	Work width	9.90 m (32'6")	9.90 m (32'6")
	Conditioner speed	700 – 1,000 rpm	950 rpm
	Conditioner model	V-type steel tines	Rubber or steel rollers
	No. of discs	6 / side mounted mower, 5 / front mounted mower	
	No. of swathing drums	2 / side mounted mower, 2 / front mounted mower	
	Blade attachment	Quick-fit	
<b>Cabin</b>	Air seat	Standard	
	Helper seat	Standard	
	Climatronic with cooling box	Standard	
	In-cab information system	Standard	
<b>Overall dimensions</b>	Transport width	3.00 m (9'10")	3.00 m (9'10")
	Transport length	8.45 m (27'9")	8.45 m (27'9")
	Transport height	4.00 m (13'2")	4.00 m (13'2")
	Weight depending on specification	16 t	16 t
	Weight distribution front/rear axle	64 / 36 %	
<b>Tyres</b>	Front: Mitas AC 70 N 800/65 R 32	Standard	
	Rear: Mitas AC 65 600/65 R28	Standard	
	Front: Vredestein Flotation Trac 800/60 R 32	option	
	Rear: Vredestein Flotation Trac 600/60 R 30,5	option	



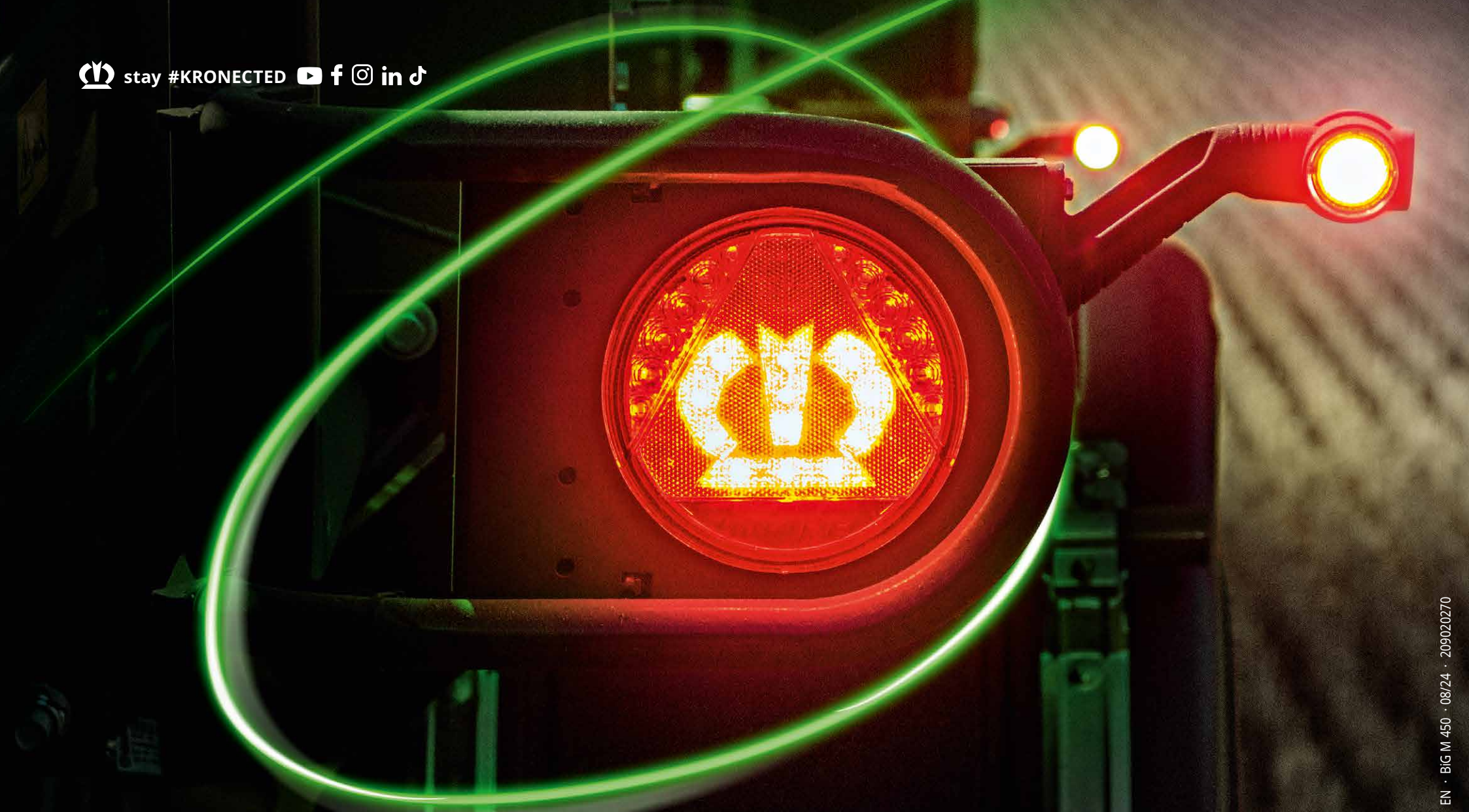




Experience  
from all over the world







**Maschinenfabrik Bernard KRONE GmbH & Co. KG**  
Heinrich-Krone-Straße 10  
D-48480 Spelle  
Phone: +49 (0) 5977 935-0  
info.ldm@krone.de | [www.krone-agriculture.com](http://www.krone-agriculture.com)

Your KRONE dealer