

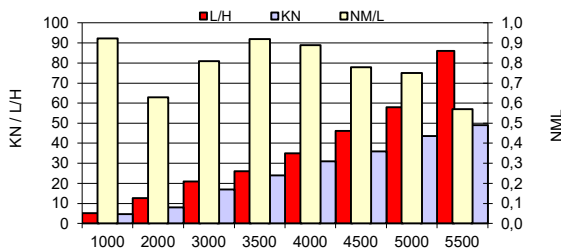
## TEST CONDITIONS

Test Date	10.12.2020
Test Conductor	Glenn Furuheim
Boat Weight as Tested (kg)	Approx 1780kg
Air Temperature (degrees C)	2
Elevation (m)	0
Sea State (calm / smooth / slight / moderate)	Smooth
Wind Velocity range (kn)	2
Fresh/Salt Water	Salt
Fuel Level at Testing (l)	50 %

## PERFORMANCE SUMMARY

Top Speed (kn @ rpm)	53 @ 5910
Acceleration 0 - 20 kn (seconds)	3,6
Acceleration 0 - 30 kn (seconds)	5,6
Best Fuel Economy (nm/l @ rpm)	0,9 @ 3500

## PERFORMANCE CURVE



## PERFORMANCE DATA

RPM	SPEED	FUEL CONSUMPTION	FUEL CONSUMPTION	RANGE	FUEL CONSUMPTION
RANGE	KN	L/H	NM/L	NM	L/NM
1000	4,8	5,2	0,9	270,0	1,1
2000	8	12,7	0,6	180,0	1,6
3000	17	21	0,8	240,0	1,2
3500	24	26,1	0,9	270,0	1,1
4000	31	34,9	0,9	270,0	1,1
4500	36	46,2	0,8	240,0	1,3
5000	43,5	58	0,8	240,0	1,3
5500	49	86	0,6	180,0	1,8
6000	53	90,4	0,6	180,0	1,7
Top RPM	53	90,4	0,6	180,0	1,7

## ENGINE SPECIFICATIONS

Number of Engines	1
Engine	Mercury 250 Verado
Horsepower	250
Cylinders	V8
Drive or gear model and ratio	1,85
Engine Length (in)	25"

## BOAT SPECIFICATIONS

Region/s sold	Norway
Manufacturer	Zodiac
Website	<a href="https://www.zodiac-nautic.com/en/">https://www.zodiac-nautic.com/en/</a>
Boat Model	Medline 7.5
Boat Type	Inflatable - Rigid Hull (RIB)
Material	Fiberglass
Length (m)	7,34
Beam (m)	2,9
Max hp Capacity	300
Fuel Tank Capacity (l)	300L
Steering Type	PWR steering
Dry Boat Weight (kg)	1150
Mounting Bolt Hole (outboard)	4

## PROPELLER SPECIFICATIONS

Part Number	
Part Number	
Part Number	
Part Number	825864A47
Mercury Name	Tempest Plus
Material	SS
Diameter/Pitch	14,6 x 23"
Number of Blades	3
Active trim profile	2



MERCURY MARINE PO BOX 1939 FOND DU LAC, WISCONSIN 54936-1939

©2015 Mercury Marine, All Rights Reserved. Results on individual boats may vary depending on many factors.

800-MERCURY MERCURYMARINE.COM

Boatbuilder authorize Mercury to publish the BHB on Mercury WEB site: Y

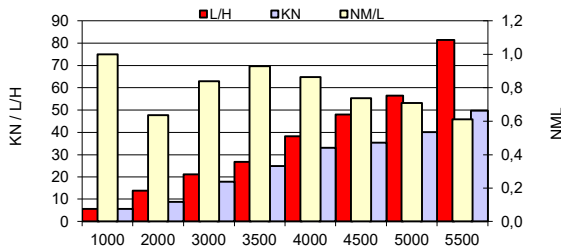
### TEST CONDITIONS

Test Date	10.12.2020
Test Conductor	Glenn Furuheim
Boat Weight as Tested (kg)	Approx 1780kg
Air Temperature (degrees C)	2
Elevation (m)	0
Sea State (calm / smooth / slight / moderate)	Calm
Wind Velocity range (kn)	1
Fresh/Salt Water	Salt
Fuel Level at Testing (l)	50 %

### PERFORMANCE SUMMARY

Top Speed (kn @ rpm)	56 @ 5950
Acceleration 0 - 20 kn (seconds)	3,6
Acceleration 0 - 30 kn (seconds)	5,7
Best Fuel Economy (nm/l @ rpm)	3500 @ 0,9

### PERFORMANCE CURVE



### PERFORMANCE DATA

RPM	SPEED	FUEL CONSUMPTION	FUEL CONSUMPTION	RANGE	FUEL CONSUMPTION
RANGE	KN	L/H	NM/L	NM	L/NM
1000	5,7	5,7	1,0	300,0	1,0
2000	8,8	13,8	0,6	180,0	1,6
3000	17,8	21,2	0,8	240,0	1,2
3500	24,8	26,7	0,9	270,0	1,1
4000	33	38,2	0,9	270,0	1,2
4500	35,4	48	0,7	210,0	1,4
5000	40,1	56,5	0,7	210,0	1,4
5500	49,7	81,4	0,6	180,0	1,6
6000	56	97,5	0,6	180,0	1,7
Top RPM	56	97,5	0,6	180,0	1,7

### ENGINE SPECIFICATIONS

Number of Engines	1
Engine	Mercury 300 Verado
Horsepower	300
Cylinders	V8
Drive or gear model and ratio	1,85
Engine Length (in)	25"

### BOAT SPECIFICATIONS

Region/s sold	Norway
Manufacturer	Zodiac
Website	<a href="https://www.zodiac-nautic.com/en/">https://www.zodiac-nautic.com/en/</a>
Boat Model	Medline 7.5
Boat Type	Inflatable - Rigid Hull (RIB)
Material	Fiberglass
Length (m)	7,34
Beam (m)	2,9
Max hp Capacity	300
Fuel Tank Capacity (l)	300L
Steering Type	PWR steering
Dry Boat Weight (kg)	1150
Mounting Bolt Hole (outboard)	4

### PROPELLER SPECIFICATIONS

Part Number	
Part Number	
Part Number	
Part Number	
Mercury Name	825872A47
Material	Tempest Plus
Diameter/Pitch	SS
Number of Blades	14,6 x 24"
Active trim profile	2 3



MERCURY MARINE PO BOX 1939 FOND DU LAC, WISCONSIN 54936-1939

©2015 Mercury Marine, All Rights Reserved. Results on individual boats may vary depending on many factors.

800-MERCURY MERCURYMARINE.COM

Boatbuilder authorize Mercury to publish the BHB on Mercury WEB site: Y