

Single Axle



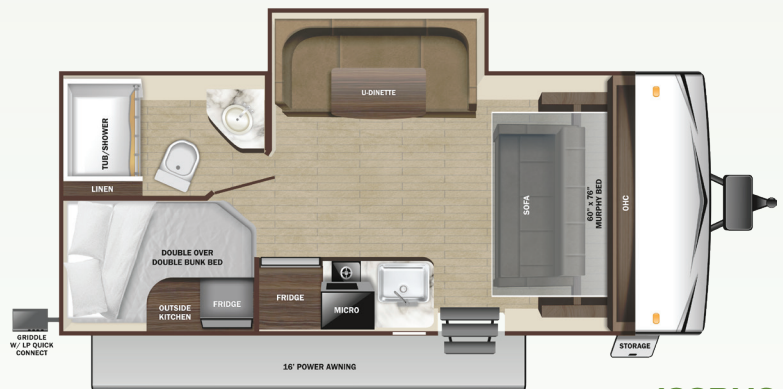
180BHS



19BH



182RB



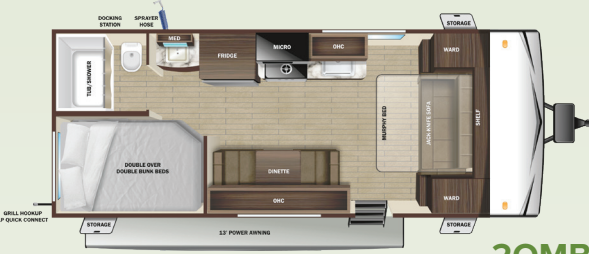
188BHS



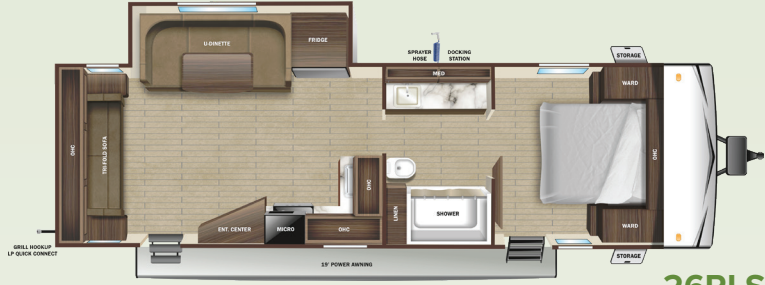
20FBS



26BH



20MB



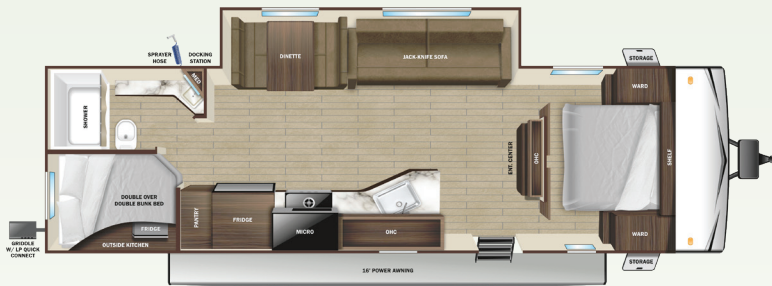
26RLS



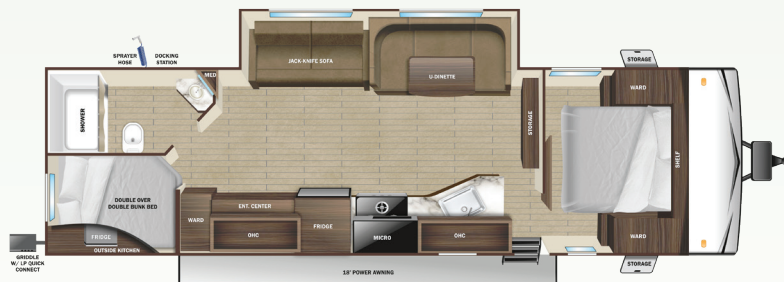
25FB



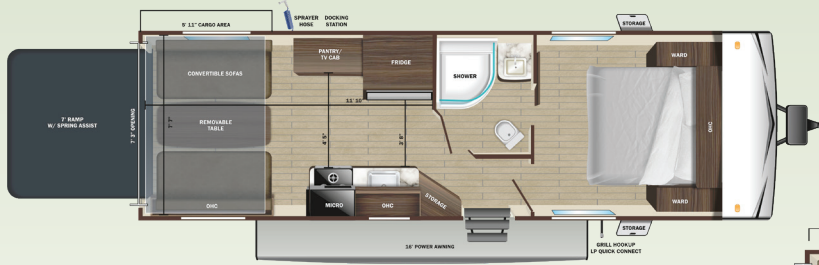
27BH



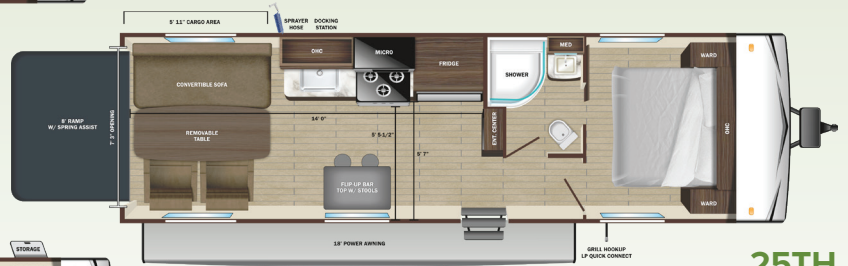
26BHS



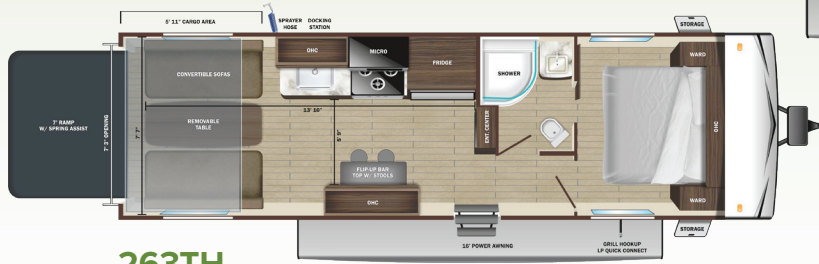
28BHS



233TH



25TH



263TH

SPECIFICATIONS (May Include Estimated Values)	180BHS	19BH	182RB	188BHS	20FBS	20MB	25FB	26BH	26RLS	27BH	26BHS	28BHS	233TH**	25TH	263TH
Unloaded Vehicle Weight (lbs.)	3,700	3,565	3,485	4,245	4,600	4,225	TBD	4,795	5,655	5,210	5,880	6,275	5,240	5,425	5,290
Dry Hitch Weight (lbs.)	430	405	400	600	515	525	TBD	625	770	670	770	755	845	880	920
Gross Vehicle Weight Rating (GVWR)	4,900	4,450	4,475	5,300	6,250	5,850	TBD	6,750	7,500	7,000	7,500	7,600	7,500	8,750	7,600
Cargo (Gross)	1,200	885	990	1,055	1,650	1,625	TBD	1,955	1,845	1,790	1,690	1,325	2,260	3,325	2,310
Exterior Length (Overall)	22' 2"	22' 4"	22' 11"	23' 10"	23' 8"	24' 6"	27' 1"	29' 6"	30' 1"	30' 7"	30' 8"	33' 10"	28' 4"	30' 0"	30' 4"
Exterior Height	10' 7"	10' 7"	10' 4"	10' 7"	11' 1"	10' 7"	TBD	10' 7"	11' 0"	10' 6"	11' 1"	11' 2"	10' 6"	13' 0"	10' 6"
Exterior Width	8' 0"	8' 0"	8' 0"	8' 0"	8' 0"	8' 0"	8' 0"	8' 0"	8' 0"	8' 0"	8' 0"	8' 0"	8' 0"	8' 0"	8' 0"
Exterior Width (Slides Out)	10' 1"	N/A	N/A	10' 6"	9' 5"	N/A	TBD	N/A	11' 0"	N/A	11' 0"	11' 0"	N/A	N/A	N/A
Interior Height	6' 9"	6' 9"	6' 9"	6' 9"	6' 9"	6' 9"	6' 9"	6' 9"	6' 9"	6' 9"	6' 9"	6' 9"	6' 9"	8' 4"	6' 9"
Fresh water Capacity (Gal.) (Eastern Built)*	N/A	26	26	26	48	48	51	48	48	48	48	48	48	48	48
Fresh water Capacity (Gal.) (Western Built)*	36	N/A	36	48	90	90	90	90	90	90	90	90	90	90	90
Gray Waste Water Capacity (Gal.)	19.9	19.9	19.9	39	39	39	TBD	39	39	78	32.5	39	39	39	39
Black Waste Water Capacity (Gal.)	19.9	19.9	19.9	39	39	39	TBD	39	39	39	32.5	39	39	39	39
LP Capacity (lbs.)	20	20	20	20	60	60	60	60	60	60	60	60	60	60	60
Tire Size	15"	15"	14"	15"	14"	14"	14"	14"	14"	14"	14"	14"	14"	14"	14"
Awning Size	11'	13'	13'	16'	12'	13'	18'	18'	19'	16'	16'	18'	16'	18'	16'

*Includes water heater

**Specifications, weights, measurements, and capacities above are from model year 2023 and are estimates only for model year 2024. Actual specs, weights, measurements, and capacities may be different for model year 2024 than what is listed above. For the most up-to-date model year 2024 specs, please speak with your local Starcraft dealer, visit <http://www.StarcraftRV.com>, and check the yellow sticker on the door of your Starcraft RV before purchasing, operating, and towing the RV.

STANDARD INTERIOR EQUIPMENT

- 75 lb. ball bearing drawer guides
- 81" interior height
- AM/FM/Bluetooth® radio with indoor/outdoor zoned speakers
- Closeable A/C vents
- Flush floor slides with residential vinyl flooring
- Foot flush toilet
- Hardwood cabinet doors
- LED interior lighting
- Pleated blackout night shades
- Pocket-screwed lumbercore cabinet construction
- Pressed membrane kitchen countertops
- Range hood
- Residential high-rise kitchen faucet
- Single basin under-mount kitchen sink
- Storage below main bed

STANDARD EXTERIOR EQUIPMENT

- 120 GFCI protected receptacle
- 5/8" main floor decking
- 96" exterior width
- Black front diamond plate protection
- Exterior docking center (dual axle models)
- Detachable power cords
- Fiberglass insulation
- Flexible LP lines
- Galvanized wheel wells
- Grab handle
- Griddle with bumper bracket (26BHS, 28BHS, 188BHS)
- In-frame battery rack
- Magnetic baggage door catches
- Magnum Roof™ system
- Marine grade exterior speakers (2)
- PVC roofing membrane (limited lifetime warranty)
- Rain guttering with molded drip spouts
- Rear camera prep
- Safety bumper with drain hose carrier and end caps
- Self-adjusting electric brakes and E-Z Lube® axles
- Thermal Seal- enclosed, insulated, and heated underbelly and fully insulated roof with a PVC roofing membrane (dual axle models)
- Tinted safety-glass windows throughout

CUSTOMER CONVENIENCE PACKAGE (Mandatory)

- 13,500 BTU roof mounted A/C
- 17" oven (dual axle models)
- 2-burner range with glass cover (single axle models)
- 3-burner range with glass cover (dual axle models)
- Dome style digital TV antenna
- Gas/electric water heater
- Microwave
- Powered awning with LED lighting
- Powered bathroom vent
- Nitrogen filled radial tires
- Residential vinyl flooring throughout
- Stabilizer jacks (4-dual axle models, 2-single axle models)
- Solid swing down step (main)
- Entrance door with window and shade prep
- Water heater bypass
- Xtend Solar I Package (200 watt solar panel with 30 amp controller)

OPTIONS

- 14" Aluminum Rims 14" (182RB, 20MB, 20FBS, 26BH, 26BHS, 26RLS, 27BH, 28BHS, 233TH 263TH)
- 15" Aluminum Rims 15" (19BH, 180BHS, 188BHS, 25TH)
- 15,000 BTU A/C (dual axle models)
- 50 amp service with 2nd A/C (26BHS, 26RLS, 28BHS)
- Fiberglass Sidewalls (n/a 233TH, 25TH, 263TH)
- Griddle with bumper bracket (20FBS, 26BH, 20MB, 26RLS, 182RB, 19BH, 180BHS)
- MOAB Pkg (Western built units only) (Aluminum Rims option N/A) (N/A 233TH, 25TH, 263TH)
- Ramp Patio (233TH, 25TH, 263TH)
- Smart TV
- Spare tire with carrier (mandatory on single axle models)



Go the distance with our **3-Year Limited Structural Warranty** plus a 1-Year Limited Manufacturer's Warranty—freedom from worry is your best travel companion.



StarcraftRV.com
#CampingPureAndSimple

LOCAL DEALER INFO

STARCRRAFT
Starcraft RV – Part of the Jayco Family of Companies
903 S. Main Street
Middlebury, IN 46540 USA
(800) 945-4787

Unloaded Vehicle Weight (UJV): Sometimes referred to as "Dry Weight," UJV means the typical weight of this trailer as built at the factory. The UJV, as used in product literature and other promotional materials, does not include cargo, fresh water, propane, options or dealer-installed accessories. Hitch Weight (HW): The hitch weight, as used in product literature and other promotional materials, does not include cargo, fresh water, propane gas, options or dealer-installed accessories. The addition of these types of items will either add to or subtract from the stated hitch weight. It is important for your safety and enjoyment that your tow vehicle be adequately sized and equipped to tow and handle the GVWR of the RV you select. Review weights and rating of your tow vehicle and consult a competent advisor for questions or advice. Whether you are new to RVing or a veteran, get a fee for the performance of your tow vehicle before heading out on the roadways. When you tow an RV, you must drive differently than when you drive a single vehicle. Practice hooking up, driving, backing up and braking in a safe environment or seek out professional instruction. Starcraft affixes a weight label to each RV which lists weight information for that vehicle. See specifications chart on the respective pages of this brochure.

Starcraft RV | 903 S. Main Street | Middlebury, IN 46540 See dealer for further information and prices. All information in this brochure and on www.STARCRRAFTRV.COM is the latest available at the time of publication approval. Starcraft RV reserves the right to make changes and to discontinue models without notice or obligation. Photography may show optional equipment or props used for decoration purposes only. RVs built for sale in Canada may differ to conform to Canadian codes. Starcraft and the S are registered trademarks of Jayco, Inc. Printed in U.S.A.