



3555 Holly Lane N., Suite #30
 Plymouth, MN 55447
 763-398-2690
 info@cfmotousa.com
 CFMOTOUSA.COM



2023 OFF-ROAD



Copyright 2023 Zhejiang CFMOTO Power Co., Ltd. All rights reserved. CFMOTO®, CFORCE®, UFORCE®, ZFORCE® and CFMOTO CF logo are trademarks of Zhejiang CFMOTO Power Co., Ltd. BOSCH® is a registered trademark of Robert Bosch GmbH, Delphi® is a registered trademark of Delphi Automotive PLC. CVTech® is a registered trademark of CVTech-AAB. All ZFORCE, CFORCE and UFORCE models feature a standard 12-month Limited Warranty. WARNING: CFMOTO recreational vehicles are intended for off-road use only and can be hazardous to operate. Read Owner's Manual and all product labels before operating. Never operate on paved roads. Operators and passengers must wear a helmet, eye protection and protective clothing. Operators must be at least 16 years old with a valid driver's license. Passengers, if permitted, must be at least 12 years old. Always use seat belts, cab netting and doors (if equipped). Never operate under the influence of alcohol or drugs. Avoid excessive speed and sharp turns, and never engage in stunt driving. Check state and local laws before operating on trails. Take a safety training course before operating. Contact your CFMOTO dealer for more information, call the ATV Safety Institute at 1-800-887-2887, or go to www.atvsafety.org. ©2023 Zhejiang CFMOTO Power Co., Ltd.



UNCOMPROMISING QUALITY MEETS WALLET-LOVING AFFORDABILITY.



Which machine is right for you? The powerful, adventure-loving ZFORCE 950 Sport or the 950 H.O. EX? The all-new ZFORCE 950 Trail or 800 Trail, with bold styling and trail-smoothing chassis? There's also the hard-working UFORCE 1000 XL, with room for you and five more. Perhaps the innovative CFORCE 1000 Overland, the first ATV designed for journeys as bold as your spirit, is perfect for you. The right ride for fun and work—and your wallet—is waiting. **Ride without compromise.**

ZFORCE P. 6



UFORCE P. 12



CFORCE P. 18



SETTING THE STANDARD FOR WHAT COMES STANDARD.

We bet you're asked to compromise much more than you'd like. That ends here and now. CFMOTO machines come packed with the power, performance, and features you want without unpacking your wallet. So bring on the nasty trails, the rough roads, and the meanest tasks. The ride you want, with the features you want, built in from the start, is here.

AT CFMOTO, COMPROMISE ISN'T PART OF OUR MISSION.



GLOBAL MANUFACTURER OF RECREATIONAL VEHICLES, PARTS, AND ACCESSORIES

Since 1989, CFMOTO has been a major supplier of engines, parts, and components for some of the biggest names in motorsports. With success comes opportunity. Today we are a major manufacturer of complete machines—motorcycles, ATVs, and side-by-sides—with hundreds of thousands of vehicles sold all over the world every year. Here in the U.S., we have more than 500 dealers, making it easier than ever for enthusiasts like you to enjoy the sport of riding.



HARDTOP ROOF

TFT DISPLAY

AUTOMOTIVE-STYLE PAINT

ELECTRONIC POWER STEERING

LED HEADLIGHTS

STEEL BUMPERS

POWERFUL WINCH

ALUMINUM RIMS

**SOMETIMES THE BEST PART
OF GETTING AWAY FROM IT ALL
IS HOW YOU GOT THERE.**



Every sand pebble is calling your name. Are you up for the challenge? Make sure your machine is. The ZFORCE lineup of performance side-by-sides is designed to dominate shifting sand dunes, rut-filled trails, and terrain that sends the timid home early. The new styling on these beasts is certain to make Mother Nature and your riding buddies jealous. The ZFORCE Trail models have an all-new chassis, and its narrow 50-inch-wide stance lets you ride almost anywhere—even restricted trails. The ZFORCE 950 Sport and the ZFORCE 950 H.O. EX come with a wider stance for nastier terrain, with the 950 Sport getting an all-new chassis. The new ZFORCE lineup is ready. They're the perfect get away to adventure vehicles.



ELECTRONIC POWER STEERING (EPS)
Variable-assist electronic power steering gives you optimal steering feedback in all conditions. A dual mode automatically adapts with the vehicle's power mode, giving you a better handling feel.



50" TRAIL STANCE
Go where others can't. Narrower stance gives you access to restricted 50"-wide and other tight trails.



STANDARD FEATURES

HARDTOP ROOF
Protect yourself from the elements. Comes standard on all ZFORCE models.

LCD DISPLAY
Keep an eye on the important stuff. The easy-to-read display lets you quickly monitor twelve engine vitals at a glance.

RIDE MODES
Want even more performance and power? Switch to sport mode and watch the dirt fly.

PROTECTIVE SIDE DOORS
Newly designed full side doors offer great protection.

TTA REAR SUSPENSION
The Torsional Trailing Arm (TTA) delivers more controlled wheel movement and tire-to-ground contact for predictable handling.

ADJUSTABLE GAS SHOCKS
Front and rear compression adjustable gas shocks come standard on the 950 Trail.

ALUMINUM ALLOY WHEELS
Lightweight aluminum machined polished rims are wrapped by durable performance tires.

3,500 LB. WINCH
Help a buddy or yourself out. The powerful 3,500 lb. winch comes standard on all ZFORCE Trail models.

NEW G2 CHASSIS
A redesigned chassis and new styling mean you'll turn heads as fast as you turn your favorite corner.



STANDARD FEATURES

HARDTOP ROOF
Protect yourself from the elements. Comes standard on all ZFORCE models.

ELECTRONIC POWER STEERING (EPS)
Variable-assist electronic power steering gives you optimal steering feedback in all conditions. The 950 Sport has dual-mode EPS, automatically adapting to the vehicle's power mode, giving you a better handling feel.

PULSE™ DIGITAL DISPLAY
The TFT (thin film technology) color display shows several engine vitals and comes with a Bluetooth call indicator.




NORMAL MODE



SPORT MODE

RIDE MODES
Want even more performance and power? Switch to sport mode and watch the dirt fly.



PROTECTIVE SIDE DOORS
The 950 Sport has newly designed full side doors. The 950 EX has half doors.

RIDEVISION™ LED HEADLIGHTS
LED array reflector-style sets you apart, 80% brighter than halogen. (950 models only.)

3,500 LB. WINCH
Help a buddy or yourself out. The EX model gets synthetic rope, which is lighter weight, easier to handle, and has increased strength.

QUADLINK™ REAR SUSPENSION
Ground-smoothing adjustable gas shocks work in tandem with multi-link trailing arms to take on whoops, ruts, and dunes. An adjustable toe-in/toe-out feature lets you dial in your ideal ride.



ALUMINUM ALLOY WHEELS
Lightweight aluminum machined polished rims are wrapped by hardwearing performance tires. EX models get beadlocks for the toughest environments.

60-64" SPORT STANCE
950 Sport = 60" wide.
950 EX = 64" wide.





ZFORCE 800 TRAIL

50" wide with an 800cc V-Twin EFI engine, 2WD/4WD/4WD lock, 3,500 lb. winch, and full doors.



Shown with optional accessories.

ZFORCE 950 TRAIL

50" wide with a 950cc V-Twin EFI engine (85 hp), 2WD/4WD/4WD lock, 3,500 lb. winch, and full doors.



ZFORCE 950 SPORT

60" wide with a 963cc V-Twin EFI engine (85 hp), 2WD/4WD/4WD lock, 3,500 lb. winch, and full doors.



ZFORCE 950 H.O. EX

64" wide with a 963cc V-Twin EFI high output engine (90 hp), QuadLink™ trailing arm rear suspension, 2WD/4WD/4WD lock, 3,500 lb. winch, and half doors.



ZFORCE SPECS



POWER	800 TRAIL	950 TRAIL	950 SPORT	950 H.O. EX
ENGINE TYPE	V-Twin, liquid cooled, 4-stroke, SOHC, 8-valve	V-Twin, liquid cooled, 4-stroke, SOHC, 8-valve	V-Twin, liquid cooled, 4-stroke, SOHC, 8-valve	V-Twin, liquid cooled, 4-stroke, SOHC, 8-valve
DISPLACEMENT	800cc	963cc	963cc	963cc
MAX POWER	62 HP @ 6700 RPM	85 HP @ 7750 RPM	85 HP @ 7750 RPM	90 HP @ 7750 RPM
FUEL SYSTEM	Delphi® EFI	Bosch® EFI	Bosch® EFI	Bosch® EFI
TRANSMISSION	CVTech Automatic P/R/N/H/L	CVTech Automatic P/R/N/H/L	CVTech Automatic P/R/N/H/L	CVTech Automatic P/R/N/H/L
DRIVE	2WD/4WD/4WD lock	2WD/4WD/4WD lock	2WD/4WD/4WD lock	2WD/4WD/4WD lock
DIMENSIONS				
L X W X H	120" x 50" x 71.6"	120" x 50" x 71.6"	120" x 60" x 73.6"	118" x 64" x 71"
WHEEL BASE	90"	90"	90"	90"
GROUND CLEARANCE	10"	10"	12"	13"
CURB WEIGHT	1,390 lbs.	1,390 lbs.	1,433 lbs.	1,510 lbs.
FEATURES				
BRAKING	Front/Rear: Hydraulic disc	Front/Rear: Hydraulic disc	Front/Rear: Hydraulic disc	Front/Rear: Hydraulic disc
SUSPENSION	Front: Independent arched dual A-arm Rear: TTA Suspension (Dual A arm & connection rod)	Front: Independent arched dual A-arm Rear: TTA Suspension (Dual A arm & connection rod)	Front: Independent arched dual A-arm Rear: TTA Suspension (Dual A arm & connection rod)	Front: Double A-arm independent Rear: QuadLink™ trailing arm independent
SHOCKS	Front/Rear: Spring pre-load adjustable, oil damped	Front/Rear: High pressure gas w/ piggyback reservoir, compression adjustable	Front/Rear: High pressure gas w/ piggyback reservoir, compression adjustable	Front/Rear: High pressure gas w/ piggyback reservoir, compression/rebound adjustable
WHEELS	14" Cast aluminum alloy	14" Cast aluminum alloy	14" Cast aluminum alloy	14" Cast aluminum alloy w/beadlocks
TIRES	Front: 26" x 9" x R14 Rear: 26" x 11" x R14	Front: 26" x 9" x R14 Rear: 26" x 11" x R14	Front: 27" x 9" x R14 CST Stag Rear: 27" x 11" x R14 CST Stag	Front: 29" x 9" x R14 CST Rear: 29" x 11" x R14 CST
ADDITIONAL FEATURES	Electronic power steering, 3,500 lb. winch, electronic throttle control, LCD display, LED headlights, roof, tilt steering with steering wheel lock, full doors, 2" receiver	Electronic power steering, 3,500 lb. winch, electronic throttle control, LCD display, LED headlights, roof, tilt steering with steering wheel lock, full doors, 2" receiver	Electronic power steering, 3,500 lb. winch, electronic throttle control, LCD display, LED headlights, roof, tilt steering with steering wheel lock, full doors, rear cargo box cover, 2" receiver	Electronic power steering, 3,500 lb. winch with synthetic rope, Pulse™ TFT display, Ridevision™ LED headlights/taillights, roof, tilt steering with steering wheel lock, half doors, 9.6 gal. fuel tank
COLORS	Nebula Black, Royal Blue, Galaxy Grey	Mercury Silver, Force Red, Lava Orange	Nebula Black, Tundra Grey, Lava Orange	Royal Blue, Nebula Black, Pearl White

HARD JOBS DEMAND AN EASY RIDE.



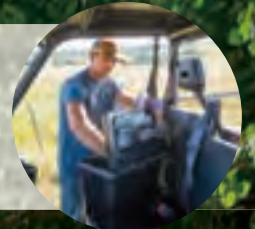
UFORCE utility side-by-sides prove to your most demanding jobs that they're a force to be reckoned with. These work-ready machines tackle harsh conditions with bucket-loads of power and handling. Take the UFORCE 1000 XL, the beefier brother to the UFORCE 1000. The two comfortable 3-person bench seats make it easy to ride all day, wherever the job or big game takes you. The 600 sports a roomy 2-person bench seat and is ideal for checking on crops or tooling around the cabin. We loaded each UFORCE with comfort and convenience. A large-capacity cargo box and powerful winch come standard on every UFORCE. Work can be tough. That's why we make getting to the job and back on a UFORCE comfortable for you—and your wallet.

UFORCE 1000/1000 XL

UFORCE 600



3-PERSON BENCH SEAT (6-PERSON CAPACITY ON 1000 XL)
Share the adventure. Fold up the center console with integrated cup holders and you have a front bench seat with room for three adult passengers. The 1000 XL has two bench seats for a capacity of six riders.



REMOVABLE STORAGE BOX
The handy pull-out tool box under the seat is a roomy spot to store extra gear.

STANDARD FEATURES

HARDTOP ROOF
Protect yourself from the elements. Comes standard on all UFORCE models.

ELECTRONIC POWER STEERING
Variable-assist electronic power steering gives you optimal steering feedback in all conditions. Tilt steering wheel ensures the perfect driving position for your comfort.

1,000 LB. CAPACITY TILTING CARGO BOX
Unload whatever you're hauling easily with a nitrogen gas-assisted dump box. Handy tie-downs come standard on the cargo box.



PULSE™ DIGITAL DISPLAY
The TFT (thin film technology) color display shows several engine vitals and comes with a Bluetooth call indicator.



SIDE NETS
Keep brush and debris where it belongs, out of the cab.

PROJECTOR BEAM HEADLIGHTS WITH LED ACCENTS
See what's ahead of you with these bright white LED projector headlights accented with stylish LED strips.

3,500 LB. WINCH (1000)
4,500 LB. WINCH (1000 XL)
Help a buddy or yourself out. The 1000 models get synthetic rope, which is lighter weight, easier to handle, and has increased strength.

ALUMINUM ALLOY WHEELS WITH 27" CST PERFORMANCE TIRES
Lightweight aluminum machined polished rims are wrapped by hardwearing performance tires for traction across every terrain.

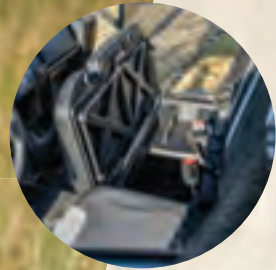


963CC V-TWIN
79 HP delivers plenty of grunt for pulling, hauling, and gettin' the job done.

STANDARD FEATURES

HARDTOP ROOF
Protect yourself from the elements. Comes standard on all UFORCE models.

2-PERSON BENCH SEAT WITH UNDER-SEAT STORAGE
High-style, high-quality, sculpted seats ensure optimum seating position and all-day comfort for you and your passenger.



RIDEVISION™ LED HEADLIGHTS
LED array reflector-style sets you apart. See better with light that's 80% brighter than halogen.

BACKUP LIGHTS AND LED TAILLIGHTS
Get a better view of what's behind you with these lights in low-light conditions.

SIDE NETS
Keep brush and debris where it belongs, out of the cab.

LCD DISPLAY
Monitor twelve engine vitals at a glance.

ALUMINUM ALLOY WHEELS
Lightweight aluminum machined polished rims are wrapped by hardwearing performance tires.

3,500 LB. WINCH
Help pull a buddy or yourself out. Also comes in handy for operating an accessory plow.



ELECTRONIC POWER STEERING WITH TILT & WHEEL LOCK
Variable-assist electronic power steering gives you optimal steering feedback in all conditions.



600 LB. CAPACITY DUMPING CARGO BOX
Load and unload easily thanks to the nitrogen gas-assisted dump box. The box on the 600 has convenient slots for divider boards to separate your cargo.





Shown with optional accessories.

UFORCE 600

580cc single cylinder EFI engine, 600-lb. capacity rear cargo box, 2-person bench seat, roof, 3,500 lb. winch.



UFORCE 1000

963cc V-twin EFI engine, 1,000-lb. capacity rear cargo box, 3-person bench seat, roof, 3,500 lb. winch.



UFORCE 1000 XL

963cc V-twin EFI engine, 1,000-lb. capacity rear cargo box, two 3-person bench seats, roof, 4,500 lb. winch. Six-person capacity.

UFORCE SPECS



600



1000



1000 XL

POWER	600	1000	1000 XL
ENGINE TYPE	Single cylinder, liquid cooled, 4-stroke, SOHC, 4-valve	V-Twin, liquid cooled, 4-stroke, SOHC, 8-valve	V-Twin, liquid cooled, 4-stroke, SOHC, 8-valve
DISPLACEMENT	580cc	963cc	963cc
MAX POWER	40 HP @ 6250 RPM	79 HP @ 7000 RPM	79 HP @ 7000 RPM
FUEL SYSTEM	Bosch® EFI	Bosch® EFI	Bosch® EFI
TRANSMISSION	CVTech Automatic P/R/N/H/L	CVTech Automatic P/R/N/H/L	CVTech Automatic P/R/N/H/L
DRIVE	2WD/4WD/4WD lock	2WD/4WD/4WD lock	2WD/4WD/4WD lock
DIMENSIONS	600	1000	1000 XL
L X W X H	110.5" x 57.25" x 75.5"	117" x 63.5" x 72.8"	148" x 63.5" x 72.8"
WHEEL BASE	76.34"	80.7"	112"
GROUND CLEARANCE	10.25"	11.4"	11.4"
CURB WEIGHT	1,481 lbs.	1,520 lbs.	1,808 lbs.
CARGO BOX CAPACITY	600 lbs.	1,000 lbs.	1,000 lbs.

FEATURES

FEATURES	600	1000	1000 XL
BRAKING	Front/Rear: Hydraulic disc with parking brake	Front/Rear: Hydraulic disc	Front/Rear: Hydraulic disc
SUSPENSION	Front: High clearance gull wing A-arm independent Rear: Double A-arm independent	Front: High clearance gull wing A-arm independent Rear: Double A-arm independent	Front: High clearance gull wing A-arm independent Rear: Double A-arm independent
SHOCKS	Front/Rear: Spring pre-load adjustable, oil damped	Front/Rear: Spring pre-load adjustable, oil damped	Front/Rear: Spring pre-load adjustable, oil damped
WHEELS	12" Cast aluminum alloy	14" Cast aluminum alloy	14" Cast aluminum alloy
TIRES	Front: 26" x 8" x R12 Rear: 26" x 10" x R12	Front: 27" x 9" x R14 CST Rear: 27" x 11" x R14 CST	Front: 27" x 9" x R14 CST Rear: 27" x 11" x R14 CST
ADDITIONAL FEATURES	Electronic power steering, electronic throttle, mirrors, 3,500 lb. winch, 2-person bench seat, LCD display, Ridevision™ LED headlights and taillights with backup lights, tilt steering with steering wheel lock, roof, rear differential lock, large 9.25 gal. fuel tank, 2" receiver, adjustable driver's seat, removable storage box	Electronic power steering, electronic throttle, 3,500 lb. winch with synthetic rope, 3-person bench seat, TFT display, mirrors, LED headlights/taillights, tilt steering, roof, rear differential lock, large 10.5 gal. fuel tank, 2" receiver, adjustable driver's seat, removable storage box	Electronic power steering, electronic throttle, 4,500 lb. winch with synthetic rope, two 3-person bench seats, TFT display, mirrors, LED headlights/taillights, tilt steering, roof, rear differential lock, large 10.5 gal. fuel tank, 2" receiver, adjustable driver's seat, removable storage box

COLORS

Velocity Grey, Tactical Green, Royal Blue

Nebula Black, Twilight Blue, True Timber Camo

Nebula Black, Twilight Blue, True Timber Camo

**GET OUT THERE.
REALLY OUT THERE.**



Do you want to get away from it all or get away to it all? Either way, CFORCE ATVs make it happen. Inspired by adventure motorcycles, the top-of-the-line CFORCE 1000 Overland's 963cc V-twin engine tackles uneven trails and rocky terrain as effortlessly as the responsibilities you're leaving behind. An accessory passenger seat and three hard-side gear cases make packing your hunting, fishing, or camping gear easier than bagging the big one. The 800 XC and 600 Touring offer sculpted, 2-up seating, while the 600 has pack-it-on front and rear racks so you can bring more of what you want. The 400 and 500 are mid-sized but go full-size on value and come with styling that you don't want to camouflage. What are you waiting for? Your favorite spots are calling. Get there with CFORCE.





3 REMOVABLE HARD-SIDE TRAVEL CASES

These hard-side cases let you securely pack your must-have gear for hunting, fishing or camping trips.



STANDARD FEATURES

FRONT FAIRING

An integrated windscreen and hand guards help protect you from the elements.

ELECTRONIC POWER STEERING

Variable-assist electronic power steering gives you optimal steering feedback in all conditions.

ALUMINUM ALLOY WHEELS WITH BEADLOCK RIMS

Fitted with lightweight aluminum machined polished rims and rugged CST Clincher off-road tires on 14-inch rims with beadlocks for when nature gets nasty.

BRIGHT WHITE PROJECTOR BEAM HEADLIGHTS

See what's ahead of you with these bright white LED projector headlights accented with stylish LED strips.

LED FLOODLIGHTS

Get a better view of the trail you're riding with these high-intensity LED floodlights.

HEAVY-DUTY BUMPERS

Heavy-duty steel front and rear bumpers add an extra layer of protection to your machine.

BASH PLATE & SKID PLATES

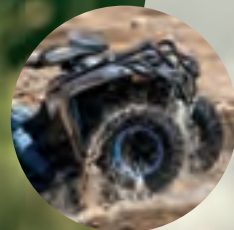
High-strength aluminum bash plate and durable full-length HDPE skid plates easily handle nasty rocks and stumps along the trail.

3,000 LB. WINCH

Features synthetic rope, which is lighter weight, easier to handle, and has increased strength.

2-UP SEAT COMPATIBLE

Share the adventure. A passenger seat accessory is available so a friend can hop on for all the fun.



STANDARD FEATURES

ELECTRONIC POWER STEERING

Variable-assist electronic power steering gives you optimal steering feedback in all conditions.

BRIGHT WHITE PROJECTOR BEAM HEADLIGHTS

See what's ahead of you with these bright white LED projector headlights accented with stylish LED strips.

FRONT AND REAR COMPOSITE-OVER-STEEL RACKS

Bring all your accessories and must-have gear. These rugged racks feature a composite-over-steel design for added durability and ease of attachment.

HAND GUARDS

Reinforced plastic for maximum hand protection from trees, brush, and mud.

FENDER FLARES

Durable plastic flares minimize mud, water, and debris from spraying over you, your passenger, and your machine.

ALUMINUM ALLOY WHEELS

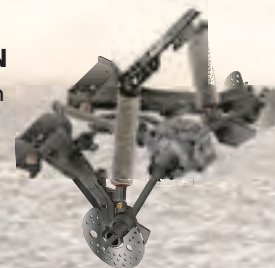
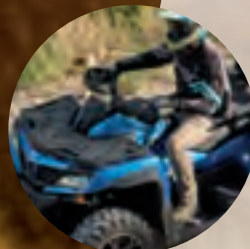
Lightweight aluminum machined polished rims are wrapped by hardwearing performance tires.

3,000 LB. WINCH

Features synthetic rope, which is lighter weight, easier to handle, and has increased strength.

TRAILING ARM REAR SUSPENSION

Tackle rugged terrain and navigate tight, twisting trails with maximum comfort and confidence.



SCULPTED 2-UP SEATING

Superior support and optimized seating position for all-day riding comfort. Robust materials and high-quality stitching for long-lasting durability you and your passengers will appreciate mile after mile.



REAR TRAILING ARM SUSPENSION

Equipped with fully adjustable gas shocks to help smooth out whatever road you're taking.





CHOOSE BETWEEN A 1-UP OR 2-UP MODEL

Both beasts have sharp styling and a powerful 600 EFI engine. The question is, do you ride solo or get the touring model with a sculpted passenger seat to allow for a second rider to join in the fun? Whichever you choose, you win.



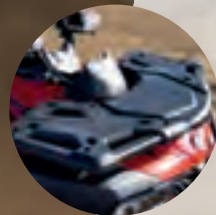
STANDARD FEATURES

ELECTRONIC POWER STEERING

Variable-assist electronic power steering gives you optimal steering feedback in all conditions.

FRONT AND REAR COMPOSITE-OVER-STEEL RACKS

Bring all your accessories and your must-have gear. These rugged racks feature a composite-over-steel design for added durability and ease of attachment.



SCULPTED 2-UP SEATING

Superior support and optimized seating position for all-day riding comfort. Robust materials and high-quality stitching for long-lasting durability you and your passengers will appreciate mile after mile. (600 Touring model only.)

HAND GUARDS

Reinforced plastic for maximum hand protection from trees, brush, and mud.

FENDER FLARES

Durable plastic flares minimize mud, water, and debris from spraying over you, your passenger, and your machine.



ALUMINUM ALLOY WHEELS

Lightweight aluminum machined polished rims are wrapped by hardwearing performance tires.



RIDEVISION™ LED HEADLIGHTS

LED array reflector-style sets you apart. See better with light that's 80% brighter than halogen.

3,000 LB. WINCH

Features synthetic rope, which is lighter weight, easier to handle, and has increased strength.

STANDARD FEATURES

ELECTRONIC POWER STEERING

Variable-assist electronic power steering gives you optimal steering feedback in all conditions. (Not available on 400.)

FRONT AND REAR COMPOSITE-OVER-STEEL RACKS

Bring all your accessories and gear. These rugged racks feature a composite-over-steel design for added durability and ease of attachment. (400 has steel racks.)



USB PORT

Power up on the go. Also has a 12-volt accessory outlet.



LCD DISPLAY

Keep an eye on the important stuff. Monitor twelve engine vitals at a glance.

ALUMINUM ALLOY WHEELS

Lightweight aluminum machined polished rims are wrapped by hardwearing performance tires. (400 has steel wheels.)



RIDEVISION™ LED HEADLIGHTS

LED array reflector-style sets you apart. See better with light that's 80% brighter than halogen (400 gets halogen headlights with LED accents).

2,500 LB. WINCH

Handlebar-mounted switch for easy on-off control (500 only).



CFORCE 400. VALUE PRICED WITH EVERYTHING YOU NEED.

This mid-size entry-level machine gets you access to adventure without stretching your budget. Comes loaded with standard steel racks, steel rims, halogen headlights with LED accents, a USB port, 12-volt accessory plug, and an LCD display. Pretty good for the lowest priced ATV around.





CFORCE 400

400cc single cylinder EFI engine, front and rear steel racks, steel rims, LCD display.

CFORCE 500

495cc single cylinder EFI engine, front/rear composite-over-steel racks, aluminum rims, 2,500 lb. winch, electronic power steering.

CFORCE 600

580cc single cylinder EFI engine, front/rear composite-over-steel racks, aluminum rims, 3,000 lb. winch, electronic power steering.

CFORCE 600 TOURING

580cc single cylinder EFI engine, 2-up seating, front and rear racks, 3,000 lb. winch, electronic power steering.

CFORCE 800 XC

800cc V-twin EFI engine, front and rear composite-over-steel racks, 2-up seating, trailing arm rear suspension, 3,000 lb. winch.

CFORCE 1000 OVERLAND

963cc V-twin EFI engine, beadlock rims, 3 removable hard-side travel cases, trailing arm rear suspension, 3,000 lb. winch.



CFORCE SPECS



POWER	400	500	600	600 TOURING	800 XC	1000 OVERLAND
ENGINE TYPE	Single cylinder, liquid cooled, 4-stroke, SOHC, 4-valve	Single cylinder, liquid cooled, 4-stroke, SOHC, 4-valve	Single cylinder, liquid cooled, 4-stroke, SOHC, 4-valve	Single cylinder, liquid cooled, 4-stroke, SOHC, 4-valve	V-Twin, liquid cooled, 4-stroke, SOHC, 8-valve	V-Twin, liquid cooled, 4-stroke, SOHC, 8-valve
DISPLACEMENT	400cc	495cc	580cc	580cc	800cc	963cc
MAX POWER	31 HP @ 7200 RPM	38 HP @ 6800 RPM	45 HP @ 6500 RPM	45 HP @ 6500 RPM	62 HP @ 7250 RPM	79 HP @ 7000 RPM
FUEL SYSTEM	Bosch® EFI	Bosch® EFI	Bosch® EFI	Bosch® EFI	Delphi® EFI	Bosch® EFI
TRANSMISSION	CVTech Automatic P/R/N/H/L	CVTech Automatic P/R/N/H/L	CVTech Automatic P/R/N/H/L	CVTech Automatic P/R/N/H/L	CVTech Automatic P/R/N/H/L	CVTech Automatic P/R/N/H/L
DRIVE	2WD/4WD/4WD lock	2WD/4WD/4WD lock	2WD/4WD/4WD lock	2WD/4WD/4WD lock	2WD/4WD/4WD lock	2WD/4WD/4WD lock
DIMENSIONS						
L X W X H	80.6" x 44.3" x 45.3"	80.6" x 44.3" x 45.3"	81.1" x 46.4" x 48"	88.9" x 46.4" x 53.1"	90.5" x 48" x 56.7"	90.5" x 48" x 56.7"
WHEEL BASE	50"	50"	50"	58.3"	58.3"	58.3"
GROUND CLEARANCE	9.8"	10.3"	10.6"	10.6"	11.2"	11.8"
CURB WEIGHT	750 lbs.	783 lbs.	870 lbs.	915 lbs.	1,058 lbs.	1,080 lbs.
RACK CAPACITY	Front/Rear: 75 lbs./100 lbs.	Front/Rear: 75 lbs./100 lbs.	Front/Rear: 75 lbs./100 lbs.	Front/Rear: 100 lbs./75 lbs.	Front/Rear: 100 lbs./75 lbs.	Front/Rear: 100 lbs./75 lbs.

FEATURES

BRAKING	Front/Rear: Hydraulic disc with parking brake	Front/Rear: Hydraulic disc with parking brake	Front/Rear: Hydraulic disc with parking brake	Front/Rear: Hydraulic disc with parking brake	Front/Rear: Hydraulic disc with parking brake	Front/Rear: Hydraulic disc with parking brake
SUSPENSION	Front/Rear: Double A-arm independent	Front/Rear: Double A-arm independent	Front/Rear: Double A-arm independent	Front/Rear: Double A-arm independent	Front: High clearance A-arm independent Rear: Trailing arm independent	Front: High clearance A-arm independent Rear: Trailing arm independent
SHOCKS	Front/Rear: Spring pre-load adjustable, oil damped	Front/Rear: Spring pre-load adjustable, oil damped	Front/Rear: Spring pre-load adjustable, oil damped	Front/Rear: Spring pre-load adjustable, oil damped	Front/Rear: High pressure gas, compression/rebound adjustable	Front/Rear: High pressure gas, compression/rebound adjustable
WHEELS	12" Steel	12" Cast aluminum alloy	12" Cast aluminum alloy	12" Cast aluminum alloy	14" Cast aluminum alloy	14" Cast aluminum alloy w/beadlocks
TIRES	Front: 24" x 8" x R12 Rear: 24" x 10" x R12	Front: 25" x 8" x R12 Rear: 25" x 10" x R12	Front: 25" x 8" x R12 Rear: 25" x 10" x R12	Front: 25" x 8" x R12 Rear: 25" x 10" x R12	Front: 26" x 9" x R14 CST Rear: 26" x 11" x R14 CST	Front: 27" x 9" x R14 CST Rear: 27" x 11" x R14 CST

ADDITIONAL FEATURES

CFORCE 400	LCD display, USB port, engine braking, halogen headlights with LED accents, LED taillights, 12-volt power outlet	Electronic power steering, 2,500 lb. winch, LCD display, USB port, Ridevision™ LED headlights and taillights, engine braking, 2" receiver, 12-volt power outlet	Electronic power steering, electronic throttle, 3,000 lb. winch with synthetic rope, LCD display, USB port, Bluetooth call indicator, engine braking, Ridevision™ LED headlights & taillights with backup lights, 2" receiver, hand guards, 12-volt power outlet	Electronic power steering, electronic throttle, 3,000 lb. winch with synthetic rope, LCD display, USB port, Bluetooth call indicator, engine braking, Ridevision™ LED headlights & taillights with backup lights, 2" receiver, hand guards, passenger seat, 12-volt power outlet	Brushless electronic power steering, 3,000 lb. winch with synthetic rope, USB port, projector beam headlights with LED accents, LCD display, 2" receiver, hand guards, passenger seat, 12-volt power outlet	Brushless electronic power steering, 3,000 lb. winch with synthetic rope, USB port, projector beam headlights with LED accents, LCD gauge, 2" receiver, wind screen, 3-piece cargo box, hand guards, steel bumpers, aluminum bash plate, heavy duty skid plates, LED floodlights, fender flares, 12-volt power outlet
------------	--	---	--	--	---	---

COLORS	Sky Blue (injected), Rocket Red (injected), Hunter Green (injected)	Sky Blue (injected), Jet Black (injected), Mango Orange (injected), True Timber Camo	Force Red, Nebula Black, Twilight Blue, True Timber Camo	Force Red, Nebula Black, Twilight Blue, True Timber Camo	Royal Blue, Lava Orange, Ghost Grey, True Timber Camo	Granite Ridge, VSX Midnight Camo
--------	---	--	--	--	---	----------------------------------

CFORCE110

Teach your kids to ride right, right from the start, with the CFORCE 110. It's built for riders aged ten and up, and is equipped with a double A-arm independent front suspension, disc brakes, automatic transmission, and electric start. And the 110cc SOHC engine is tuned to develop excellent low- to mid-range performance. The CFORCE 110 is a smart way to help first-time riders build skills at their own pace. App-based geofence technology and a speed limiter help keep kids within a safe distance when they're beyond your direct eyesight. Because you should never have to compromise on family fun.



THE FAMILY THAT RIDES TOGETHER STAYS TOGETHER.

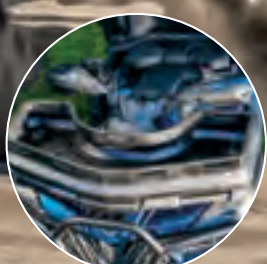
STANDARD FEATURES

- For small adventure-seekers ages 10 and up.
- 110cc air-cooled four-stroke engine.
- Electric start.
- Maximum speed 28 mph.
- Automatic transmission in F/N/R is handy for all riders.
- LED instrument with clear indicators.
- Independent double A-arm front suspension.
- 5-level preload adjustable shocks.
- Hydraulic disc brakes with 19" front and 18" rear tires to help the rider conquer all kinds of terrain.
- Magnetic safety tether.
- Built-in throttle limiter.
- Parking brake.
- High-visibility LED front light and brake light.
- Specially developed user app and geofence function to manage the vehicle and give parent more ease to monitor use.
- Comfortable seat with the right ergonomics for young riders.
- Colors: Rocket Red, Baja Blue.



GEAR UP FOR YOUR ADVENTURE.

Make your CFMOTO truly yours. Choose from a full line-up of rugged bumpers, windshields, rack accessories, cargo boxes, cabs, snow plows, generators, and more. See your dealer for all ZFORCE, UFORCE, and CFORCE accessories.



ACCESSORIES