

MAGNUM™ 180 – 380 TRACTORS

CASE II
AGRICULTURE

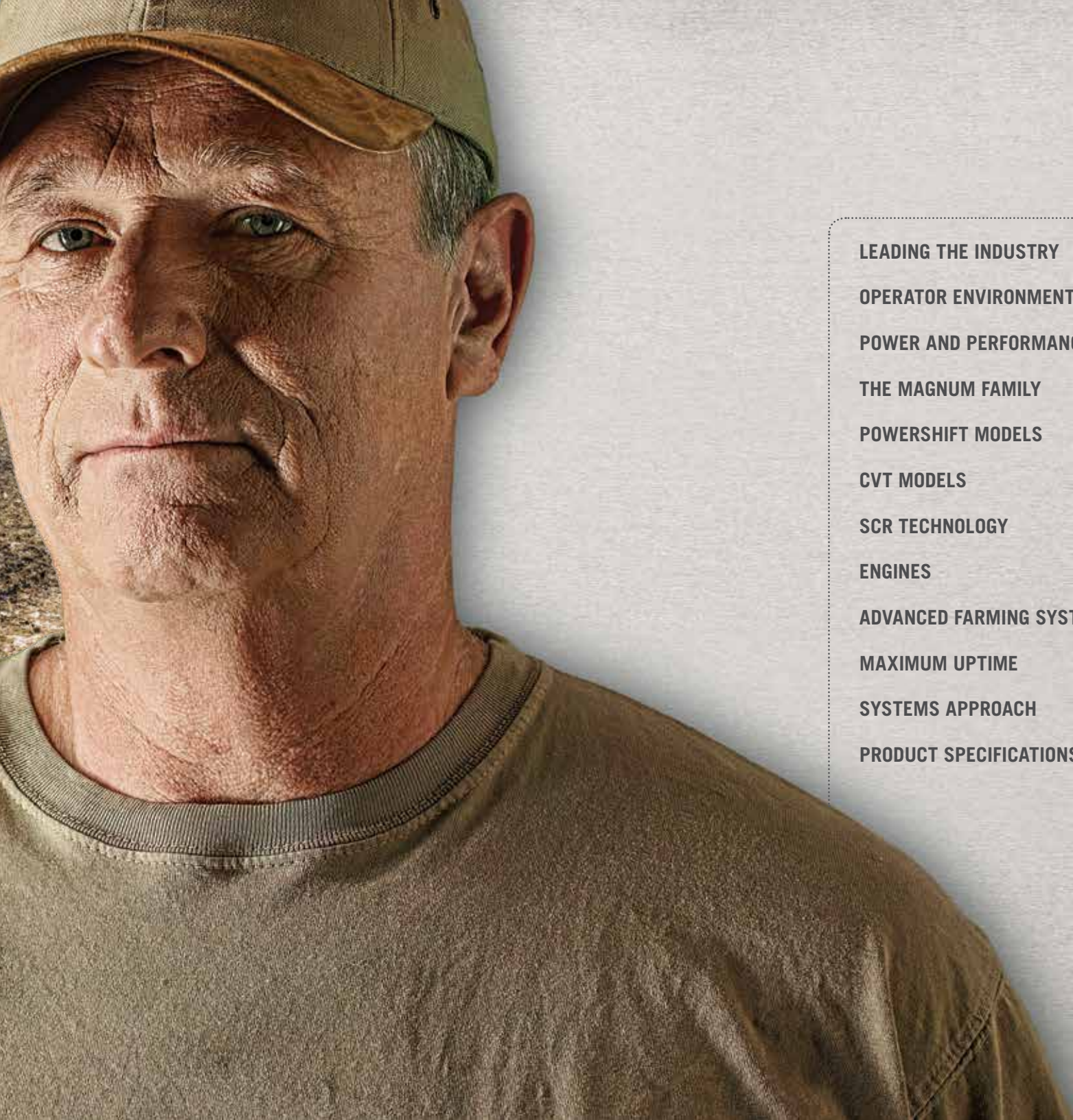


BE READY FOR THE CHALLENGES AHEAD WITH MORE POWER FOR TOUGH CONDITIONS.

Today's implements continue to ask more from you and your tractor. Case IH listened and applied innovative technologies to give you more power, more efficiency and a better operator experience. Magnum series tractors combine class-leading horsepower with proven SCR-only emissions technology for optimum power and fuel efficiency. The optional, factory-installed Advanced Farming Systems give you accurate precision tools for a boost in productivity. And Magnum tractors are agronomically designed to minimize compaction for maximum production. In the face of growing challenges, Magnum series tractors help you stay ahead.

BE READY.





LEADING THE INDUSTRY

4-5

OPERATOR ENVIRONMENT

6-7

POWER AND PERFORMANCE

8-9

THE MAGNUM FAMILY

10-11

POWERSHIFT MODELS

12-13

CVT MODELS

14-15

SCR TECHNOLOGY

16-17

ENGINES

18-19

ADVANCED FARMING SYSTEMS (AFS)

20-21

MAXIMUM UPTIME

22-23

SYSTEMS APPROACH

24-25

PRODUCT SPECIFICATIONS

26-27

INDUSTRY-LEADING POWER. MORE PRODUCTIVITY. STRAIGHTFORWARD OPERATION.

You don't have to sacrifice fuel efficiency to get more power. Or manage complex controls to complete your job. Case IH Magnum tractors have power to handle tough conditions and to do it economically—minimizing operating costs. These tractors are designed to help you maximize your return on investment, with straightforward service and a robust design for more reliability. Efficient power—ready to perform in any situation. That's what you need. That's what we deliver.





INCREASED PRODUCTIVITY.

Cover more acres in a day and feel good doing it with the Magnum 4-way suspended cab that delivers a smooth, comfortable ride. Diesel Saver™ Automatic Productivity Management (APM) automatically selects the most efficient gear ratio and engine speed combination. Using the intuitive Multi-Control Armrest and AFS Pro 700 control center, seamlessly monitor and control key machine functions and navigate with integrated AFS AccuGuide™ autoguidance. (For more, see pages 6–7.)

POWER & PERFORMANCE.

Case IH delivers the most Efficient Power ever, with a heavy-duty frame engineered to make the most of it. Case IH FPT engines treat exhaust outside the engine, so they can be tuned to produce maximum power and uncompromised performance with minimal fuel. High-horsepower Continuously Variable Transmission (CVT) models use a unique four-range system to deliver more mechanical power. You will easily power through tough field conditions with up to 14 percent power growth, plus up to an extra 35 engine horsepower through Power Boost. (For more, see pages 8–9.)

INTUITIVE AND SIMPLE.

Case IH Magnum tractors get you in and out of fields faster. Longer, maintenance-free intervals, combined with simple-to-use controls and less stressful operation mean you can get more done when the time is right. And Magnum tractors' simple, robust designs drive machine reliability and reduce the cost of operation. (For more, see pages 22–23.)

WORK COMFORTABLY, IN ANY CONDITION.

You put in long hours in the field. Your tractor cab should help you work comfortably every hour of the day. Case IH Magnum series tractors feature a cab that allows greater comfort while in the seat, and engineering that stabilizes your ride, reducing shaking and bumping in rough terrain. All with controls that are close by and easy to use. It's an operator environment that helps you work through your fields, in any condition.



SOMETIMES YOU NEED TO WORK INTO THE NIGHT.

It's unavoidable—circumstances often require you to work in darkness. Magnum tractors offer 360-degree visibility with bright HID lights, so you can always see around the tractor and implements. You can even see the outside row units of your largest planter. So you can get out and make an adjustment, fuel up or do whatever you need on those long days that require everything you have.



WORK LONGER AND STRONGER WITH THE 4-WAY SUSPENDED CAB.

The simple, adjustable suspension in a Case IH Magnum Surveyor™ cab stabilizes front-to-back and up-and-down motions. It gives you a smoother ride whether on the road or in uneven terrain, for reduced operator fatigue and increased productivity.



UPGRADED ARMREST SIMPLIFIES CONTROLS.

Adjust your speed, gears and direction, and much more without even raising your elbow. The Case IH Multi-Control Armrest, with MultiFunction handle and AFS Pro 700 control center, puts 85% of the controls operators use most at your fingertips. Guided by customer input, Case IH engineers upgraded the Multi-Function handle with new larger, raised, backlit buttons with a softer touch and different-sized buttons. You can tell them apart by touch alone, to make switching between functions even simpler.



- A** LEFT-HAND CAB STORAGE AREA
- B** INSTRUCTIONAL SEAT
- C** LUXURY CARPETED FLOOR REDUCES NOISE LEVELS FROM TRANSMISSION/DRIVETRAIN
- D** HEATED AND VENTILATED SEAT WITH EXTENDABLE/RETRACTABLE LOWER SEAT CUSHION
- E** AFS PRO 700 TOUCH SCREEN
- F** MULTI-CONTROL ARMREST
- G** AIR FILTRATION AND AUTO CLIMATE CONTROL (NOT SHOWN)



MAGNUM CVT SPLIT-THROTTLE CONTROL.

Magnum CVT models feature an exclusive split-throttle design that allows the operator to select working speed or RPMs. The CVT automatically selects the most efficient transmission range for the desired speed or load, eliminating the need for manual clutching or shifting. The simplicity of Case IH CVT technology makes it ideal for less experienced operators to maintain peak efficiency. There's no breaking traction during shifting, giving you smooth operation in all field conditions and applications – from planting and hay baling to harvesting, hauling and transport.

POWER THAT PUTS YOU IN TOTAL CONTROL.

Case IH Magnum tractors have helped producers Be Ready for more than 25 years with reliable power and proven innovations. They give you the versatility and adaptability with freedom to adjust for any number of applications on your farm. Advanced, efficient hydraulics and a solid front-axle suspension generate consistent dependability. And the Magnum tractors' proven engines give you the power to increase productivity.

ENGINES THAT ARE PROVEN.

Magnum series tractors engines are produced by FPT Powertrain Technologies, a Case IH sister company. Case IH and FPT engineers work alongside each other in Burr Ridge, IL, Engineering Center. FPT, one of the world's largest engine manufacturers, produces nearly 3 million engines a year. Case IH FPT SCR-only technology is field-tested, field-proven - 35,000 engines with 17 million+ operating hours in North America alone.

Magnum 180–240	6.7L engine
Magnum 250–380	8.7L engine

FRONT DUALS PROVIDE MORE EVEN POWER TO THE GROUND.

Magnum series 180 to 240 tractors, equipped with a suspended front axle, now offer the option of front dual tires that distribute the tractor's weight over a greater ground surface for more traction and a better ride quality over rough ground. The improved Surround Frame helps deliver power to the ground whenever you need it. This is the versatility you demand from a row-crop tractor.





HANDLE MORE IMPLEMENTS.

Front hitches are available factory installed on the 250–380 models giving you the ability to handle more 3-point implement applications. The front PTO is designed to provide better alignment of the PTO to the implement.



SUSPENSION THAT DELIVERS THE MOST POWER TO THE GROUND.

Keeping all your tires on the ground is crucial for stability and efficient performance from your tractor. The Magnum's front-axle suspension ensures that tires stay perpendicular to the ground for stability, traction and control over rough terrain. And that means a better ride at higher speeds. The simple design keeps you from bouncing and jarring in the cab. The solid construction minimizes the number of moving parts, which means fewer service requirements.



STRONG, VERSATILE HYDRAULICS.

Hydraulic flow that handles all your row-crop applications and even takes care of loader, baler and mower work. Magnum tractors feature up to 75 gpm hydraulic flow so you can run at lower engine rpm for increased fuel efficiency without compromising operational performance. The easy to use quick-connect valves make your operation even more efficient by maintaining precise flow and pressure, even in the most severe conditions. Set the system how you want, and it adjusts for changing temperature conditions through the day.



SAVE BRAKES AND TRANSMISSION.

The Magnum 250, 280, 310, 340 and 380 have an optional engine brake for better control of larger implements in the field and on the road. It uses the compression of exhaust gas within the engine to slow the tractor, saving wear on brake pads and helping to reduce operating costs. Control the engine brake by engaging the engine brake button on the right armrest. When the engine brake is activated, and the difference between the commanded and actual engine speed exceeds a set threshold, software automatically activates the brake.



A NEW ERA IN FARMING. A NEW MAGNUM FAMILY OF TRACTORS.

Today's powerful lineup of Magnum tractors is engineered to make your job easier and more productive, allowing you to keep up with the demands of farming. Delivering an impressive 155 to 315 PTO horsepower, there's a Magnum tractor perfectly suited to your needs. They have improved horsepower curves for better low-end performance and more fuel capacity for longer run times. Be ready for the challenges ahead with the all-new Magnum tractors from Case IH.





UNLIMITED POSSIBILITIES FOR MAXIMUM VERSATILITY. THE 180–240 MAGNUM TRACTORS

Magnum 180 to 240 tractors are a perfect match for mid-sized row-crop implements with:

- Unparalleled 155 to 205 PTO horsepower
- Standard, 19-speed, full powershift transmissions (Magnum 180 to 220)
- Available with CVT transmissions (Magnum 180 to 240)
- Now available with front duals

And you control it all from the Surveyor cab, the industry's largest, with more glass than any other cab, so you can see all the angles.



POWER FOR MORE ACRES IN A DAY. THE 250–340 MAGNUM TRACTORS

The Magnum 250 to 340 tractors have the power to take on the toughest tasks, with PTO horsepower ranging from 205 to 290 and standard 19-speed, full powershift transmissions. Handle hard-pulling applications with up to 14 percent power growth and 35 engine horsepower Power Boost. More built-in ballast improves traction, reduces compaction and means your tractor's horsepower gets to the ground. Add the standard Magnum Surveyor cab with adjustable suspension, heated and ventilated seats and ergonomic Multi-Control armrest and you are ready for every long day in the field.



SMOOTH POWER TO THE GROUND. CVT FOR ALL MAGNUM MODELS

Experience the industry's leading Continuously Variable Transmission (CVT), which is an option on all models and standard on the Magnum 240 CVT (270 maximum-boosted engine horsepower) and Magnum 380 CVT (435 maximum-boosted engine horsepower). The CVT uses proven Case IH technology to deliver uninterrupted power to the ground, adapted with four ranges to be more efficient and deliver more power for tough jobs. The operator simply sets the split throttle to the appropriate minimum and maximum engine RPMs, and the Case IH CVT automatically adjusts to match ground speed and load.

MAGNUM DELIVERS POWER TO THE GROUND. SEASON AFTER SEASON.

The powertrain inside Magnum tractors generates everything you need to produce more – and eliminates unnecessary technology you don't need. It includes an engine that's passed every test and challenge, delivering industry-leading Efficient Power through Selective Catalytic Reduction (SCR)-only technology. A full powershift transmission makes the most of every day with ultra-smooth shifting and power transfer for maximum productivity. Diesel Saver™ Auto Productivity Management (APM) allows maximum fuel efficiency by managing the engine RPM and transmission speed.

PROVEN PERFORMANCE WITH SCR-ONLY TECHNOLOGY.

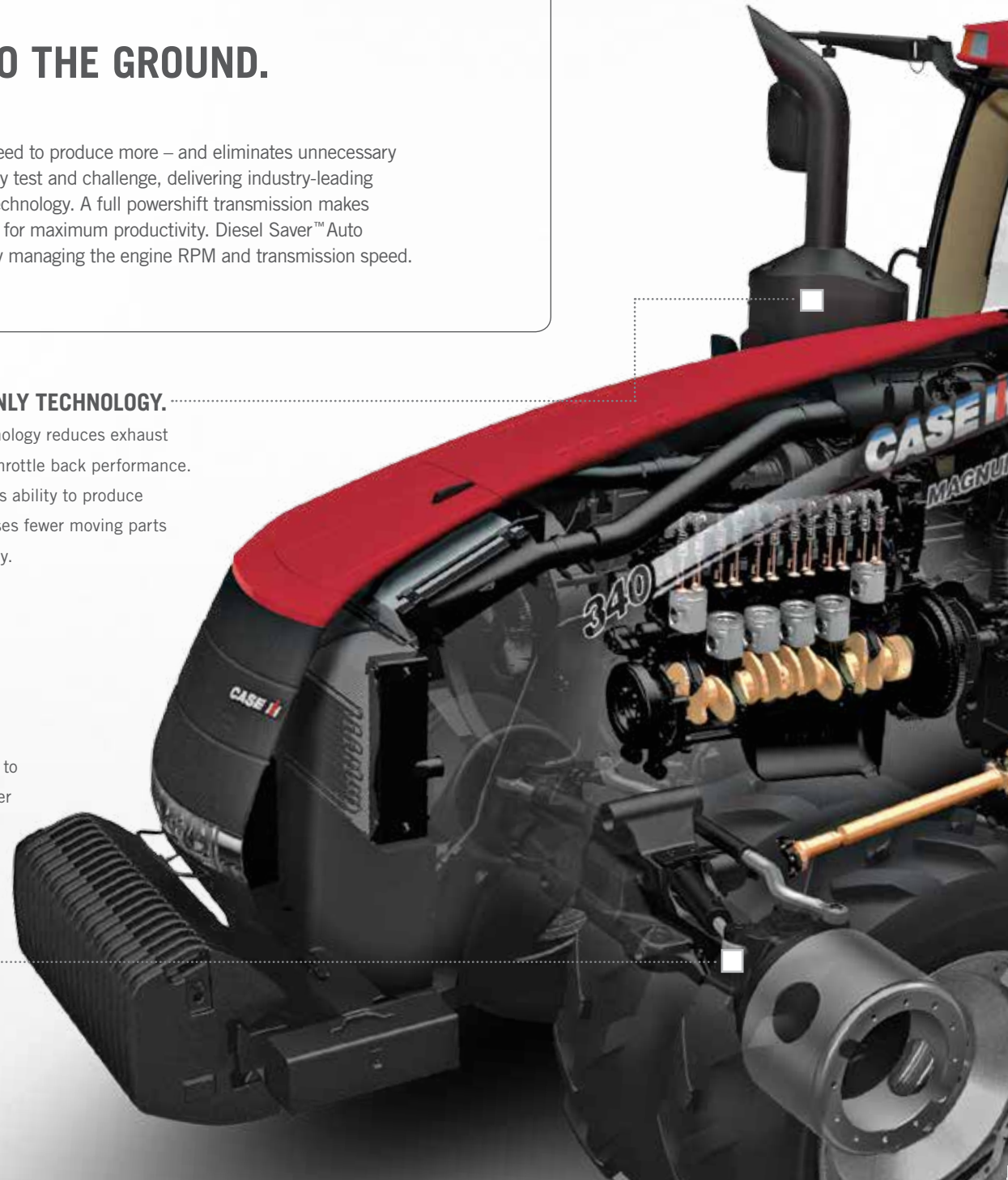
The Case IH exclusive, patented SCR-only technology reduces exhaust emissions without power-robbing add-ons that throttle back performance. The simple design actually improves the engine's ability to produce unrestricted power. And SCR-only technology uses fewer moving parts for unmatched reliability and easier serviceability.

IMPROVED AIR INTAKE.

The Magnum 250–380 air intake system has been redesigned to improve air flow and extend air filter cleaning intervals in dirty operating environments. The air intake position has been optimized to allow dirty air to flow around the tractor and provide clean and cooler air to be taken into the engine filter.

AXLES BUILT FOR A BETTER RIDE.

Case IH MFD front axle with saddle suspension improves productivity through better traction. Front duals improve power to the ground and reduce compaction.





MAKE YOURSELF COMFORTABLE.

The quiet Surveyor cab with 109 cu. ft. of space and optional cab suspension provide a comfortable work environment for those long days in the field. The updated Multi-Control armrest with integrated MultiFunction Handle and AFS Pro 700 control center provide easy, ergonomic, full-machine control.

LONGER RUN TIMES.

Larger fuel tanks mean more time can be spent in the field.

Tank Capacities:

160 gal on 180 – 240

163 gal on 250 – 380 CVT models

179 gal on 250 – 340 Powershift models

CAB SUSPENSION.

Optional adjustable cab suspension provides a smooth, comfortable ride.

SERVICE JUST GOT EASIER.

New right-hand service steps and cab handrails.

Toolbox conveniently relocated to front weight frame area.

POWER SHIFT

Proven 19-speed full powershift transmission delivers smooth power transfer for field or road. Diesel Saver APM provides maximum fuel efficiency, managing engine rpm and transmission speed. Powershift transmissions are sized for high horsepower demands, to achieve maximum reliability and durability.

CVT TRANSMISSIONS – EFFICIENT POWER, ANY APPLICATION.

On-the-go range selection. Seamless power transfer. Experience the simple, intuitive design of Magnum CVT tractors and discover the optimum combination of convenience, performance and power. Go from zero to 25 mph standard (30 mph optional) without having to manually shift. CVT automatically selects the best transmission range for the desired speed or load, eliminating the need for clutching and shifting. CVT, in combination with the Diesel Saver APM system, automatically responds with the most fuel efficient combination of engine speed and drivetrain selection. Its simplicity makes it ideal for less experienced operators. The unique four-range design improves mechanical efficiency, delivering more power than competitive designs. Simple operation. Maximum fuel efficiency. More available power. That's what Magnum CVT delivers.

MORE IMPLEMENT CONTROL.

The engine brake option, for control of larger implements in the field and on the road, is available on Magnum 250, 280, 310, 340 and 380 models.

FOOT THROTTLE.

Foot throttle and shuttle make loader work more convenient and intuitive.

INCREASED FOOTPRINT FOR REDUCED COMPACTION.

New group 49 tires for the 250-380 CVT tractors, the largest, high flotation tires available for row crop use, help minimize compaction and put more power to the ground.





EASY OPERATION.

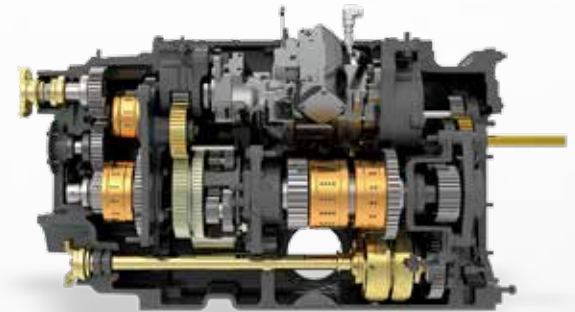
Split-throttle CVT control on MultiFunction handle makes it easy for you to achieve peak efficiency, regardless of operator experience.



TOTAL POWER CONTROL.

CVT technology offers uninterrupted power from creeper to transport speeds, without breaking traction as speed changes, making it ideal for applications such as:

- Planting
- Baling hay
- Harvesting sugar beets
- Harvesting potatoes
- Pulling grain carts
- Haulage and transport



IRON MATCHED TO THE POWER.

Rear axles are sized to match the horsepower to provide smooth and efficient power transfer. The Magnum 380 tractor comes with a 5" diameter rear axle to handle the heaviest loads through the toughest field conditions, providing the durability and longevity expected from a Magnum tractor.

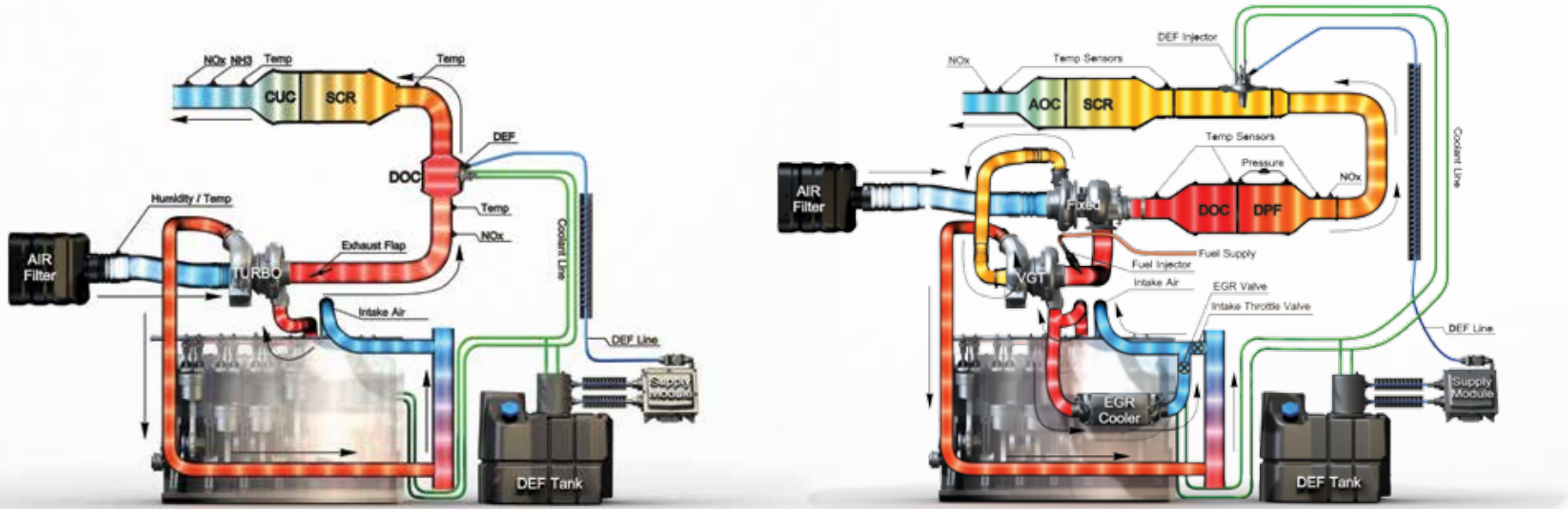
IN THE FINAL STRETCH: CASE IH STILL SETS THE STANDARD.

Since the first phase of Tier 4 emissions regulations went into effect, Case IH has been committed to an SCR-only based solution. Case IH chose SCR technology because it works outside engines and allows them to run at their best, without modification or compromise. Because it helps save diesel fuel and increase power. Because it means engines that last longer with less routine maintenance. Because Case IH went with the technology that was right from the start, that means we're out in front of the rest of the industry.



CASE IH TIER 4 B/FINAL SOLUTION EXCLUSIVE AND PATENTED.

If an SCR-only solution works so well, why doesn't every manufacturer offer it? The simple answer is they can't. The technology that lets Case IH achieve Tier 4 B/Final standards without adding EGR and DPF components is proprietary and patented. The Tier 4 B/Final SCR system is fundamentally similar to the system used for Tier 4A, with only a few new components added to meet the final Tier 4 B mandate. The new components provide the following enhancements: improved system monitoring, better NOx conversion and better control of exhaust temperatures in cold applications. The Case IH FPT edge is an exclusive one. It is the right solution, right from the start.



System component size varies from one machine application to another. Component sizes shown here are approximate and not to scale.

SCR-ONLY SOLUTION: CLEAN & SIMPLE.

The Case IH Selective Catalytic Reduction (SCR) solution is a true exhaust after-treatment system, with all of the emissions components located on the exhaust.

- Single SCR-only solution does it all with class-leading power that does not compromise efficiency.
- Treats exhaust outside the engine, without added complexity.
- No additional emission systems, and no operational changes from Tier 4A to Tier 4B/Final.
- Service requirements and engine exposure to soot and carbon minimized.
- Easy to service with industry-leading 600 hour oil change.
- Exclusive, patented SCR-only Tier 4B/Final design delivers 95% NOx conversion efficiency vs. competitive systems that provide only 80–85% efficiency.
- Designed to optimize fuel efficiency.
- 35,000+ Case IH SCR-only engines, 17 million+ operating hours in North America.

HYBRID SOLUTION: CLUTTERED & COMPLEX.

If it looks a little cramped and cluttered under the hood of a tractor with a hybrid EGR / Diesel Particulate Filter (DPF) / SCR emissions system, that's because it is.

- Operating a hybrid system means compromised performance and more complexity (and heat) than ideal
- Added engine parts throttle back power and performance
- EGR valve means higher operating temperatures and fuel costs
- More parts, more service, more maintenance expense

PROVIDED BY CASE IH EXPERTS FROM CONCEPT TO CALIBRATION.

Magnum tractor engines come from Case IH sister company FPT Powertrain Technologies. They offer the next level of performance and fuel economy, and industry-exclusive options like engine braking to reduce wear and increase control. They are engineered and tested at our Burr Ridge, Illinois facility—birthplace of the Farmall tractor—and home of Magnum tractor engineering. The collaboration between Case IH and FPT also means that Case IH service technicians are expertly trained to maintain your engine at your local Case IH dealer.



FIELD LEADING POWER AND PERFORMANCE

POWERFUL

- 6.7 and 8.7 liter engines with FPT technology provide leading fuel efficiency while maximizing power
- Up to 14% power growth to maximize performance in the toughest conditions

SIMPLE

- Selective Catalytic Reduction (SCR) to meet Tier 4 B/Final emission standards without adding other emission systems or compromising engine performance
- Does not require additional emission components such as Diesel Particulate Filter (DPF) and Cooled Exhaust Gas Recirculation (CEGR)

SMART

- Patented SCR technology provides engine power and increased fuel efficiency without compromise
- Exclusive engine brake option for increased control of larger implements

PROVEN

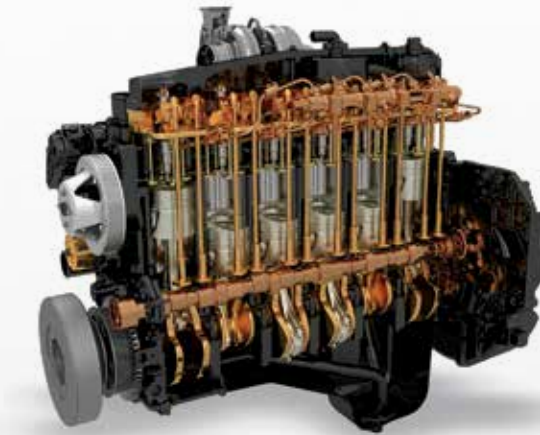
- SCR-only solution continues to be proven, in the field day after day, with over 35,000 engines in operation and counting

All Magnum engines are designed to develop up to a 14% power growth, providing the power needed in the toughest operations while giving the operator maximum fuel efficiency. In addition, Magnum engines feature a power boost of up to 35 additional horsepower to provide the additional power needed for PTO, hydraulic and transport applications.



6.7-LITER ENGINE MAGNUM 180–240 TRACTORS.

The Magnum 180–240 row crop tractors are powered by our 6.7-liter engine. The reliable, proven performance of this engine was first introduced by Case IH in 2003 on Maxxum® series tractors, later in the Puma® series in 2007, and finally in our mid-horsepower tractors since 2009. The design melds optimum fuel efficiency with quick response to changing conditions and the quality and reliability to handle the toughest farming conditions under heavy engine loads. And, it is compliant with the EPA Tier 4 B/Final emissions regulations, featuring the SCR-only emissions system that Case IH selected right from the start.



8.7-LITER ENGINE MAGNUM 250–380 TRACTORS.

The 8.7-liter engine powers the Magnum 250–380 tractors and is designed to meet the tough conditions found in agriculture under heavy engine loads, delivering optimum fuel efficiency and ease of service. This proven engine was first introduced by Case IH in Axial-Flow® combines in 2006. It's ready for your toughest field conditions with up to 35 additional engine horsepower at 2,000 rpm rated speed. And it's all compliant with the final stage of emissions standards that require cleaner exhaust. An electronically variable turbocharger enhances the performance of the 280-380 Magnum tractors by increasing the engine's ability to quickly respond to changing conditions.

A SIMPLE AUTOGUIDANCE SYSTEM, FROM FACTORY TO FIELD.

Factory-installed AFS components, including AFS AccuGuide™ autoguidance, offer dependability and convenience. Integrating AFS with the tractor at the Case IH plant ensures correct installation, testing and a higher level of quality. And your tractor arrives closer to field-ready when it gets to the dealer because you don't have to wait for a technician to install additional components. You also benefit from the added capability of using the AFS Pro 700 control center with third-party implements. Even move the Pro 700 between all your Case IH equipment. Autoguidance and other precision technologies simplify your work. Getting that technology on your tractor is just as easy.

AFS

ADVANCED
FARMING SYSTEMS



STRAIGHT. IDENTICAL. REPEATABLE.

That's what you'd expect an autoguidance system to deliver. And AFS AccuGuide does. Eliminating the guesswork of row spacing ensures each row is identical, meaning fewer end-of-row turns and overlaps. It maintains perfectly straight and repeatable rows with RTK accuracy. And it controls traffic patterns and decreases compaction from overlapping passes – benefits that bring higher yields. That adds up to less stress and fatigue for you at the end of the day.

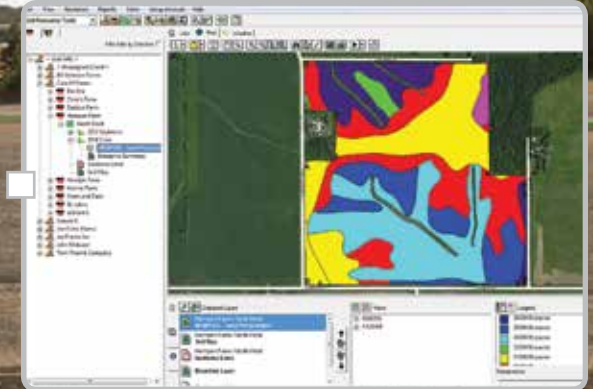
PRECISION COMPONENTS THAT MATCH THE WAY YOU FARM.

With the AFS Pro 700 control center, you benefit from added capabilities with minimal complexity. It is easy to read in daylight and adjusts for night visibility. It features one of the largest screens in the industry in a lighter, thinner package, with significant computing power. A single display provides control functionality and simple integration for not only the tractor AccuGuide™, but Case IH Early Riser® Planters, Precision Disk™ Drills and Air Carts, LB Series Balers, AFS AccuControl 3rd party controlled implements, and ISOBUS compliant implements, just to name a few. Your one stop shop for total machine and implement control is the AFS Pro 700 control center.



SOFTWARE THAT HELPS YOU ANALYZE PRODUCTION.

AFS software pulls together numerous sources of data about your farm and gives you the information you need to consider how things are changing. Using customizable and configurable screens, layer yield and moisture maps over aerial photographs and compile additional useful information with precision farming help from third-party information providers. Adapt charts, graphs and layered maps for further analysis of variety/hybrid, plant population and soil topography. Create boundaries, autoguidance lines, compare farming practices and field-to-field yields from year to year. Because autoguidance doesn't stop working for you once you get out of your tractor. Best of all, its information you own and you decide how to use it.



AT THE BASE OF IT ALL

The AFS 372 receiver uses the GLONASS satellite system, which increases the number of satellites available to the user, resulting in less downtime during periods of low GPS satellite availability. Less downtime translates into greater productivity, efficiency, and overall system reliability.

The receiver common mount and plate allow it to be transferred easily among multiple pieces of equipment.

INDUSTRY-LEADING PERFORMANCE FOR MAXIMUM PRODUCTIVITY. YOU DON'T HAVE TIME FOR ANYTHING LESS.

Crops don't wait for repairs. Maximum yields require maximum uptime, and Magnum tractors are designed with this in mind. We make it part of every feature, from daily maintenance to working with any implement. With special attention paid to the ease of ground-level service. And Case IH dealers and technicians are certified to keep you running. Maximum uptime is always on our mind. Because it's always on yours.



DAY-TO-DAY SERVICE THAT'S AS EASY AS STANDING UP.

Checking your tractor's transmission oil or hydraulic fluid can be done while standing on the ground. Because your tractor needs to keep running, and the Magnum makes it easy for you to keep on top of maintenance as quickly and effortlessly as possible—and routinely. The industry-leading 600-hour engine oil service interval helps keep you in the field. New right-hand service steps make it easy to clean glass and adjust mirrors. And Case IH dealers and technicians are ready to handle any service issues to keep you going.



HELD TO THE SUPERIOR STANDARDS YOU DEMAND.

To deliver the quality you expect, Case IH designs components in-house. They are built to exacting Case IH standards. Plus, we manufacture our own high-quality gears and drive-train to maximize durability and reliability. Quality control stays in house and assures your Case IH tractor is going to last year after year, and it'll stay ready for any demand you put on it.



IMPROVE PRODUCTIVITY WITH PROPER WEIGHTING AND BALLASTING.

Maximizing power requires the tractor to be properly weighted and ballasted. With Magnum tractors you won't worry about loss of traction and increased compaction in tough field conditions. Magnum tractors are designed for optimal weight distribution and can be adapted to meet your specific needs and application. Let your dealer assist with proper weight distribution to save you money through improved fuel economy. And see for yourself at [caseih.com/Tools/Pages/Calculators, Weighting and Ballasting](http://caseih.com/Tools/Pages/Calculators,WeightingandBallasting).



THERE'S MORE THAN JUST OUR TRACTORS WORKING IN YOUR FIELDS.

Case IH has more professionals in the field than anyone else. Our dealers have the experience to help you manage your equipment to maximize yields and your bottom line. Parts and service technicians have the expertise to assist you before, during and after the sale. And CNH Capital will work with you to customize financing solutions to identify what works best for your needs and your farm. It's an integrated equipment, service and financing system in one package. All of it focused on your operation.



KNOWLEDGEABLE DEALERS THAT WORK WITH YOU.

Your Case IH dealer understands you need to optimize the return on your investment. That means fitting the right horsepower and capabilities with the tools and implements that best fit your farm. Your dealer can recommend the appropriate options package, with proper tires and weighting and ballasting packages for optimum performance. And he or she will analyze results with you, field by field.



MAXIMUM SERVICE TO GET MAXIMUM UPTIME, SEASON AFTER SEASON.

Case IH offers Max Service, the first owner's support network in the industry. And it comes with no extra cost to you. Max Service delivers manufacturer-direct assistance to you and your Case IH dealer. If you need service, parts or just have a question, Case IH staff will quickly respond to your unique situation. Your Case IH dealer already has a full-line of parts and components, full-service maintenance programs and industry-leading warranties. Max Service gives you even more resources to boost productivity with your Case IH equipment. And minimize downtime. Your complete satisfaction is our goal. Your dealer and Max Service are here for you whenever you need help at 1-877-4CASEIH.

MAX SERVICESM
1-877-422-7344
100% Availability. 100% Support.

FINANCING AND EQUIPMENT PROTECTION TAILORED TO CASE IH EQUIPMENT AND YOU.

CNH Industrial Capital is your financial connection every step of the way, and each day we help producers like you get into the right Case IH equipment to support the unique agricultural needs of your business. Specialized finance programs and flexible leasing packages put you in the driver's seat of industry-leading Case IH equipment while staying within your budget. After your purchase, keep your equipment up and running with the CNH Industrial Capital Commercial Revolving Account for your Case IH parts & service needs, and insure your equipment with our no-nonsense warranties and comprehensive protection plans. As the only finance company dedicated to Case IH, we offer the products and services designed to help you Be Ready.

CNH
INDUSTRIAL | CAPITAL



CASE IH TRACTORS OFFER POWER YOU CAN DEPEND ON.

Michael Clemens farms in Wimbledon, ND. In 2011, he put a Case IH Magnum 260 to work, helping him farm 3,000 acres of corn and another 3,000 acres of soybeans. In 2012, he added a Steiger® 550 Quadtrac™. “The new Case IH tractors have been excellent,” says Clemens. “I was a little worried that I’d lose out on power (with the SCR technology), but my Magnum and Steiger pack the punch I need. Also, I feel like I’m doing my part to help out the environment by running such clean equipment.” Overall, he would recommend Case IH equipment with SCR technology: “It’s pretty seamless when working for performance and reliability.”

	MAGNUM 180	MAGNUM 200	MAGNUM 220	MAGNUM 240
ENGINE				
Engine Type	Tier 4B with Selective Catalytic Reduction (SCR)			
Engine HP @ rated 2,100 RPM (Magnum 180–240) ISO/ECE R120 (CV)	180	200	220	240
Maximum Engine HP @ rated 1,800 RPM ISO/ECE R120 (CV)	200	220	240	260
Maximum Boosted Engine HP @ rated 1,800 RPM ISO/ECE R120 (CV)	225	245	260	270
PTO HP @ rated 2,100 RPM (Magnum 180–240) per SAE	155	170	185	205
Cylinders/Number of Valves/Displacement	6 cyl./24 Valves/6.7 L			
Engine Aspiration	Turbocharger Wastegate			
Engine Compression Brake	NA			
ELECTRICAL				
Alternator/Battery	12V batteries (200 amp)			
TRANSMISSION/PTO				
Powershift: 18 Speed–25 MPH (40 kph)	NA			
Powershift: 19 Speed (Economy)–25 MPH (40 kph)	Standard			NA
Powershift: 19 Speed–30 MPH (50 kph)	Optional			NA
CVT Transmission–25 mph (40 kph)	Optional			Standard
CVT Transmission: 30 mph (50 kph)	Optional			
Rear PTO - Standard/Optional	540/1,000 RPM 1 3/8 in. (35 mm) shafts /NA			
AXLES				
Rear Axle Diameter - Standard/Optional	4 in.(100 mm)/NA			
Rear Axle Length - Standard/Optional	119 in. (3020 mm)/112 in. (2489 mm)			
Suspended Front Axle	Optional			
MFD Tread Adjustability	60–88 in. (1524–2235 mm)			
MFD Duals	Optional on Class 4.75 axles			
Wheelbase - Powershift	118 in. (3000 mm)			
Wheelbase - CVT	118 in. (3000 mm)			
HYDRAULICS/HITCH				
System Type	Pressure Flow Compensating (PFC)			
Remotes - Standard/Optional	3, 4 or 5 Electro-hydraulic			
Main Implement Pump Flow	FPS = 41 gpm (156 L/min.)/CVT = 43 gpm (162 L/min.)			
Rear 3-pt Hitch Category Standard/Optional	Cat III/IIIN/NA			
Standard Hitch Lift Capacity	13,600 lbs. (6 170 kg) without Quick Coupler; 13,000 lbs. (5 900 kg) with Quick Coupler			
Optional Front 3-pt Hitch Lift Capacity	NA			
Front Hitch PTO Speed and Shaft Size	NA			
CAPACITIES				
Fuel Tank	160 gal. (600L)			
Diesel Exhaust Fluid (DEF) Tank	17.5 gal. (66 L)			
CAB				
Cab Suspension	Optional			
Volume (Size)/Glass (Area)/Cab Sound Level	109.5 cu ft. (3.1 m³/68.5 sq. ft.) /67 dBa			
WEIGHT				
Average Standard Weight	21,500 lbs. (9 750 kg)			

	MAGNUM 250	MAGNUM 280	MAGNUM 310	MAGNUM 340	MAGNUM 380
ENGINE					
Engine Type	Tier 4B with Selective Catalytic Reduction (SCR)				
Engine HP @ rated 2000 RPM	250	280	310	340	380
Maximum Engine HP @ rated 1,800 RPM ISO/ECE R120 (CV)	285	315	345	375	415
Maximum Boosted Engine HP @ rated 1,800 RPM ISO/ECE R120 (CV)	320	350	380	410	435
PTO HP @ rated 2000 RPM (Magnum 250 – 380) per SAE	205	235	265	290	315
Cylinders/Number of Valves/Displacement	6 cyl./24 Valves/8.7L				
Engine Aspiration	Turbocharger Wastegate	Turbocharger eVGT			
Engine Compression Brake	Optional				
ELECTRICAL					
Alternator/Battery	200 amp/2-12V batteries				
TRANSMISSION/PTO					
Powershift: 18 Speed–25 MPH (40 kph)	Optional				NA
Powershift: 19 Speed (Economy)–25 MPH (40 kph)	Standard				NA
Powershift: 19 Speed–30 MPH (50 kph)	Optional				NA
CVT Transmission: 25 mph (40 kph)	Optional				Standard
CVT Transmission: 30 mph (50 kph)	Optional				
Rear PTO–Standard/Optional	1,000 RPM 1 3/4 in. (44.5 mm) shafts / 540/1,000 RPM 1 3/8 in. (35 mm) shafts				
AXLES					
Rear Axle Diameter - Standard/Optional	4 in.(100 mm)/4.5 in. (115 mm)	4.5 in.(115 mm)/NA			5 in.(127 mm)/NA
Rear Axle Length - Standard	120 in. (3050 mm)/NA				
Suspended Front Axle	Optional				
MFD Tread Adjustability	60–88 in. (1 524–2 235 mm)				
MFD Duals	Optional on Class 4.75 and Class 5 axles				
Wheelbase - Powershift	120 in. (3 050 mm)				NA
Wheelbase - CVT	122 in. (3 100 mm)				124 in. (3 150 mm)
HYDRAULICS/HITCH					
System Type	Pressure Flow Compensating (PFC)				
Remotes - Standard/Optional	4 Electro-hydraulic/5 or 6 Electro-hydraulic				
Main Implement Pump Flow	44 gpm (166 L/min.) / 59 gpm (225 L/min.) or 75 gpm (282 L/min.)				
Rear 3-pt Hitch Category Standard/Optional	Cat III/IIIN/NA	Cat III/IIIN/Cat IV/III		Cat IV/III/NA	
Standard Hitch Lift Capacity	12,900 lbs (5 850 kg)	15,900 (7 210 kg)	17,500 lbs (7 940 kg)	19,900 lbs (9 026 kg)	
Optional Front 3-pt Hitch Lift Capacity	9,426 lbs. (4 275 kg)				
Front Hitch PTO Speed and Shaft Size	1,000 RPM 1 3/8 in. (35 mm) shaft 21 spline				
CAPACITIES					
Fuel Tank	Powershift: 179 gal. (678L)/CVT: 163 gal. (617L)				
Diesel Exhaust Fluid (DEF) Tank	26 gal. (99L)				
CAB					
Cab Suspension	Optional				
Volume (Size)/Glass (Area)/Cab Sound Level	109.5 cu ft. (3.1 m³/68.5 sq. ft.)/67 dBa				
WEIGHT					
Average Standard Weight	28,600 lbs. (1 2973 kg)	28,800 lbs. (13082 kg)	29,600 lbs. (13458 kg)	32,200 lbs. (14 148 kg)	



SAFETY NEVER HURTS!™ Always read the Operator's Manual before operating any equipment. Inspect equipment before using it, and be sure it is operating properly. Follow the product safety signs, and use any safety features provided. CNH Industrial America LLC reserves the right to make improvements in design and changes in specifications at any time without notice and without incurring any obligation to install them on units previously sold. Specifications, descriptions and illustrative material herein are as accurate as known at time of publication, but are subject to change without notice. Availability of some models and equipment builds varies according to the country in which the equipment is used. ©2014 CNH Industrial America LLC. All rights reserved. Case IH is a trademark registered in the United States and many other countries, owned by or licensed to CNH Industrial N.V., its subsidiaries or affiliates. Printed in U.S.A. www.caseih.com

CIH03211401 Replaces CIH12121301