

DROP SPREADERS

SAND IT. SALT IT. SPREAD IT.



BAUMAN
MANUFACTURING

BACKED BY A TRADITION OF QUALITY



BAUMAN MANUFACTURING

For over 40 years Bauman Manufacturing has served the Waterloo Region. Many things have changed and some have stayed the same. Over the years, while our products have improved through ongoing research and development, we have maintained a focus on serving you – our customers – and offering uncompromised product quality.

Bauman Manufacturing began in the early 1970's distributing and manufacturing replacement chain in Conestoga, Ontario. In 1974, custom stabling became a viable aspect of the company's product line and continues to be an important product for Bauman's to this day. In 1990, the Ebersol line of inclined elevators and conveyors was added. In 1991, the purchase of Conestoga Chain increased Bauman's market share and opened up the industrial supply market. Bauman imports chains and parts to supply OEMs through vendor managed inventory programs and in 2016, became the Canadian distributor for Binacchi PTOs.

To better serve customers in a newer and more accessible location, Bauman Manufacturing relocated to a new facility in Elmira in 2001. As always, Bauman continues to offer its customers diversified product lines and custom manufacturing where your product is made to your specifications.

Bauman's company philosophy is to strive each day to continuously improve and offer the best in quality and service. Building relationships between employees, customers and suppliers enables Bauman Manufacturing to continue to promote teamwork since Bauman believes that, after all, people are our most valuable asset.



Bauman drop spreaders prevent waste and property damage with the most accurate de-icing dispensing equipment on the market. Backed by a tradition of quality for over 40 years and with 10 models to choose from, Bauman has the right solution for you.



MODEL 220



- Capacity: 2 ft³
- Spread Width: 20"
- Estimated Spread Distance: 1.5 km
- Drive: Manual
- Length: 47"
- Width: 30.5"
- Weight: 90 lbs
- Vehicle: Walk Behind



MODEL 320T



- Capacity: 3 ft³
- Spread Width: 20"
- Estimated Spread Distance: 2.23 km
- Drive: Towable Ground
- Length: 54"
- Width: 36"
- Weight: 140 lbs
- Vehicle: Towable



MODEL 430T



- Capacity: 4 ft³
- Spread Width: 30"
- Estimated Spread Distance: 4 km
- Drive: Towable Ground
- Length: 43.5"
- Width: 45.5"
- Weight: 165 lbs
- Vehicle: Towable



MODEL 440



- Capacity: 4 ft³
- Spread Width: 40"
- Estimated Spread Distance: 3 km
- Drive: Electric, Hydraulic
- Length: 19"
- Width: 47"
- Weight: 235 lbs
- Vehicle: Sub-compact Tractors



MODEL 640



- Capacity: 6.5 ft³
- Spread Width: 40"
- Estimated Spread Distance: 5.4 km
- Drive: Hydraulic, PTO
- Length: 27"
- Width: 47"
- Weight: 315 lbs
- Vehicle: Compact Tractors, Optional Skid Steer Mounting



MODEL 960



- Capacity: 9 ft³
- Spread Width: 60"
- Estimated Spread Distance: 5.2 km
- Drive: Hydraulic
- Length: 25.5"
- Width: 67.5"
- Weight: 440 lbs
- Vehicle: 3PH Tractor Mount



MODEL 1140



- Capacity: 11 ft³
- Spread Width: 40"
- Estimated Spread Distance: 9.5 km
- Drive: Hydraulic, PTO
- Length: 34"
- Width: 47"
- Weight: 370 lbs
- Vehicle: 3PH Tractor Mount





MODEL 1040SI



- Capacity: 10 ft³
- Spread Width: 40"
- Estimated Spread Distance: 8.5 km
- Drive: Electric
- Length: 58"
- Width: 47"
- Weight: 300 lbs
- Vehicle: UTV

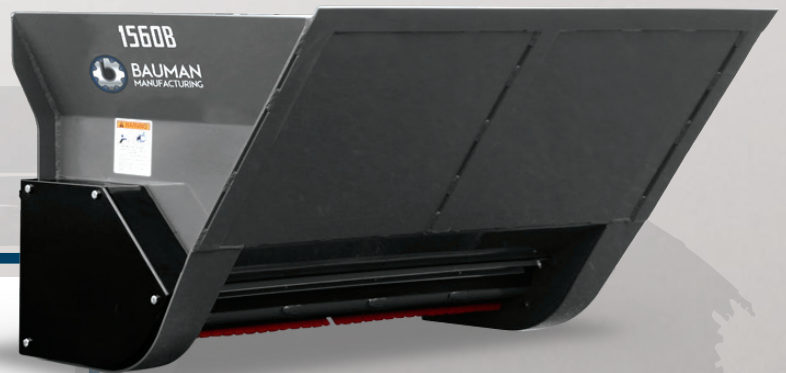


MODEL 1040B



- Capacity: 10 ft³
- Spread Width: 40"
- Estimated Spread Distance: 8.5 km
- Drive: Hydraulic
- Length: 33"
- Width: 49"
- Weight: 390 lbs
- Vehicle: 3 PH Tractor
- Mount or Skid Steer

MODEL 1560B



- Capacity: 15 ft³
- Spread Width: 60"
- Estimated Spread Distance: 8.5 km
- Drive: Hydraulic
- Length: 33"
- Width: 70"
- Weight: 510 lbs
- Vehicle: 3 PH Tractor
- Mount or Skid Steer



FINGER BAR

A unique polymer finger bar has a flexible memory in cold weather and retains its shape. The bar defines pressure and helps release an even quantity of de-icing material as seen with the cross hatch pattern when material is dropped.



SALT/SAND DRUMS

The rotating drums allow placement of various de-icing material where needed. This gives controlled delivery of materials including sand, environmentally smart de-icing products as well as road and coarse rock salt.



SPREAD PATTERN

The rotating distributor drums spread de-icing material in an even and consistent cross hatch pattern. De-icing material can then “creep” and spread out which results in an efficient use of material.



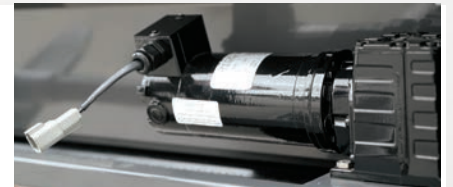
AGITATOR

The agitator bar rotates in the hopper to help keep salt and sand from bridging or clumping. The bar ensures the material passes through to the drum and then to the ground for an even application.



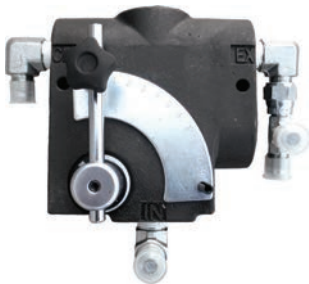
MOTOR

The 12 Volt 1/4 hp DC electric motor and reducer drives the 440E and 1040SI. The epoxy paint protects the unit from salt brine/slushy environment.



FLOW CONTROL

Flow control is included with hydraulic models to reduce hydraulic flow from the tractor to the distribution drum. It allows the operator to control distribution quantity.



TENSION LEVER

The assembly regulates the rate of flow for different types of material (i.e.: fine sand vs coarse salt). The lever allows for fine tuning of the rate of flow of material.



WIRING KIT

A complete braided wiring harness is standard on the 440E and 1040SI electric models.



EXTENSIONS

A hopper extension adds additional capacity to the load, increasing the spread distance and productivity.

Available in 6", 8" and 12", they add 2.5 to 5 cubic feet capacity per load.



COVERS

The covers keep rain, sleet, snow, etc. from soaking the de-icing material, reducing bridging and freezing that could result in costly downtime.

Available in 18 oz. heavy duty vinyl tarp material with a draw string closure or 14-gauge galvanized steel hinged lid.



VARIABLE SPEED CONTROL

Variable speed control allows an operator to control distribution quantity.

These units are standard on the 440E and 1040SI electric models.



HITCHES

A number of mounting brackets are available to fit most makes and models of compact tractors and skid steers. All brackets are made from durable steel and finished with black powder-coating for added corrosion resistance.



BRACKET 3PT TILT



JOHN DEERE
BRACKET CNG



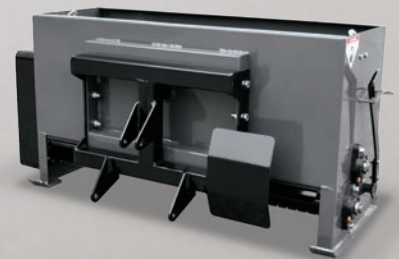
VENTRAC
BRACKET 4100



BRACKET 3PT 440



STEINER
BRACKET 440/450



KUBOTA
BRACKET 3990

SPECIFICATIONS

MODEL	CAPACITY (CUBIC FT.)	SPREAD WIDTH (INCHES)	ESTIMATED SPREAD DISTANCE*	DRIVE	LENGTH (INCHES)	WIDTH (INCHES)	WEIGHT (LBS)	VEHICLE
220	2 ft ³	20"	1.5 km	Manual	47"	30.5"	90 lbs.	Walk Behind
320T	3 ft ³	20"	2.23 km	Towable Ground	54"	36"	140 lbs.	Towable
430T	4 ft ³	30"	4 km	Towable Ground	43.5"	45.5"	165 lbs.	Towable
440	4 ft ³	40"	3 km	Electric, Hydraulic	19"	47"	235 lbs.	Sub-Compact Tractors
640	6.5 ft ³	40"	5.4 km	Hydraulic, PTO	27"	47"	315 lbs.	Compact Tractors, Optional Skid Steer Mounting
960	9 ft ³	60"	5.2 km	Hydraulic	25.5"	67.5"	440 lbs.	3PH Tractor Mount
1140	11 ft ³	40"	9.5 km	Hydraulic, PTO	34"	47"	370 lbs.	3PH Tractor Mount
1040SI	10 ft ³	40"	8.5 km	Electric	58"	47"	300 lbs.	UTV
1040B	10 ft ³	40"	8.5 km	Hydraulic	33"	49"	390 lbs.	3PH Tractor Mount or Skid Steer
1560B	15 ft ³	60"	8.5 km	Hydraulic	33"	70"	510 lbs.	3PH Tractor Mount or Skid Steer

*Spread distance can vary depending on weather conditions, ground speed or de-icing material.

3 Industrial Drive, Elmira, ON N3B 2S1 • 519•669•4333 • baumanmfg.com



BAUMAN
MANUFACTURING
 BACKED BY A TRADITION OF QUALITY