



2023 PERFORMANCE

NEW – EXCLUSIVE EDITION

# RXP<sup>®</sup>-X<sup>®</sup> APEX 300

The most exclusive high performance PWC on the water.

## KEY FEATURES

- Exclusively available via pre-sale certificate for a limited time
- Rotax<sup>®</sup> 1630 ACE™ – 300 engine
- T3-R™ hull
- Launch control
- Ergolock™ R racing seat
- Hydraulic steering damper and redesigned steering column
- Double-angled footwell wedges
- X-sponsons
- **Tech Package:** BRP Audio – Premium System, full color 7.8" wide display and USB port
- **Apex Package:** Carbon fiber hood and mirrors. Exclusive coloration on handgrips, carpets, stitching, badging, decals. Matching passenger seat and vehicle cover included



● NEW Racing Green

## CAPACITY

Rider Capacity	
Weight Capacity	400 lb/182 kg
Fuel Capacity	18.5 US gal/70 L
Glove Box	2.56 US gal/9.7 L
Front Bin	37.78 US gal/143 L
Storage Capacity – Total	40.6 US gal/153.7 L

## DIMENSIONS

Length (bumper to bumper)	130.6"/331.8 cm
Width	49.2"/125 cm
Height	44"/111 cm

## HULL

Type	T3-R Hull™
Material	Fiberglass

## OTHER FEATURES

- iBR – Intelligent Brake & Reverse
- Extended VTS™ (Variable Trim System)
- RF D.E.S.S.™ key
- Watertight phone compartment
- LinQ<sup>®</sup> attachment system
- Wide-angle mirrors
- Round handle grips
- Footwell carpets
- Large swim platform
- Ski tow eye

## ROTAX<sup>®</sup> ENGINE

1630 ACE™ – 300

Horsepower	300 hp
Intake System	Supercharged with external intercooler
Displacement	1,630 cc
Cooling	Closed-Loop Cooling System (CLCS)
Reverse System	Electronic iBR**
Fuel Type	91 octane
Throttle System	iTC™ (Intelligent Throttle Control)
Exhaust System	D-Sea-Bel™ system

## GAUGE

Type of Gauge	Large panoramic 7.8" wide LCD display	
Main Functions	• BRP Connect	• Clock
	• Music	• VTS™
	• Weather	• Fuel consumption
	• Bluetooth connectivity	• Fuel autonomy
	• Speedometer	• Speed statistics
iTC System – Mode	• RPM	• Vehicle hours
	• Sport mode	• Speed regulator
	• ECO <sup>®</sup> mode	• Launch control
	• Slow mode	

## WEIGHT

Dry Weight	780 lb/354 kg
------------	---------------

## WARRANTY

BRP limited warranty covers the watercraft for one year.

\*Electronic brake, neutral and reverse.

# SEADOO<sup>®</sup>



**FEATURE HIGHLIGHTS**



**Carbon Fiber Styling**

Full carbon fiber hood and mirrors combine with premium badging, decals and color scheme to provide a breathtaking appearance to match its impressive performance.



**Apex Exclusive Features**

The Apex only color scheme is complete with color matched hand grips, passenger seat and exclusive Apex branded vehicle cover.



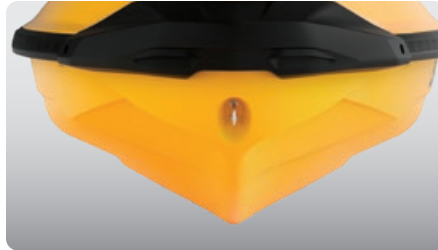
**Hydraulic Steering Damper and Redesigned Steering Column**

An industry first, it redefines rider control by reducing input from the water; creating a solid and predictable feel that can be adjusted to rider preference. A reinforced steering column will withstand high performance stress.



**Rotax® 1630 ACE™ – 300 Engine**

The Rotax 1630 ACE – 300 is the most powerful Rotax engine ever, delivering high efficiency and best-in-class acceleration.



**T3-R Hull™**

A deep-V design that offers unrivaled handling and acceleration and a new level of control at high speed.



**Ergolock™ R System**

A narrow seat profile with deep knee pockets and a revolutionary adjustable saddle that allows riders to lock in to the machine like never before.

©2022 Bombardier Recreational Products Inc., (BRP). All rights reserved. ®, TM and the BRP logo are trademarks of Bombardier Recreational Products Inc. or its affiliates. Products are distributed in the USA by BRP US Inc. All product comparisons, industry and market claims refer to new sit-down PWC with 4-stroke engines. Watercraft performance may vary depending on, among other things, general conditions, ambient temperature, altitude, riding ability and rider/passenger weight. Testing of competitive models done under identical conditions. Because of our ongoing commitment to product quality and innovation, BRP reserves the right at any time to discontinue or change specifications, price, design, features, models or equipment without incurring any obligation. †Bluetooth is a registered trademark owned by Bluetooth SIG, Inc. and any use of such trademarks by BRP is under license. Printed in Canada.