

OWNER'S MANUAL

MODEL MAR ATV 1605

Read the owner's manual completely before you use the trailer.



MARLON

Owner's Manual

IMPORTANT SAFETY CHECK LIST

PLEASE NOTE: Trailers are not generally used every day. A trailer may sit for extended periods of time between uses.

It is very important to check all components thoroughly on the trailer before use.

- Make sure that the towing vehicle and the hitch on your vehicle is more than capable of towing the trailer. It is important to check your vehicle owner's manual for trailer ratings.
- Make sure the hitch is properly secured to the ball of the towing vehicle.
- Make sure coupler is locked and the safety chains are attached to the trailer and the vehicle.
- Inspect the trailer and all parts before use.
- Check to insure that all Wheel Bolts are tight. Torque to 80 ft.lbs. Re-tighten after the first 50 miles, or 80 kilometers.
- Check the tire pressure. Maximum 14 PSI when carrying the maximum rated load.
- Repack the wheel bearings and axle pivot every 2000 miles or 3200 kilometers or a minimum of once every year.
- Check that the trailer coupler is fastened securely onto the Towing vehicles ball. The trailer ball must be a 2" ball.
- Do not exceed the Gross Vehicle Weight Rating (G.V.W.R.).
- Balance and secure the load on the trailer.
- Lubrication of the coupler, articulating axle should be done periodically to stop corrosion and keep parts moving freely.

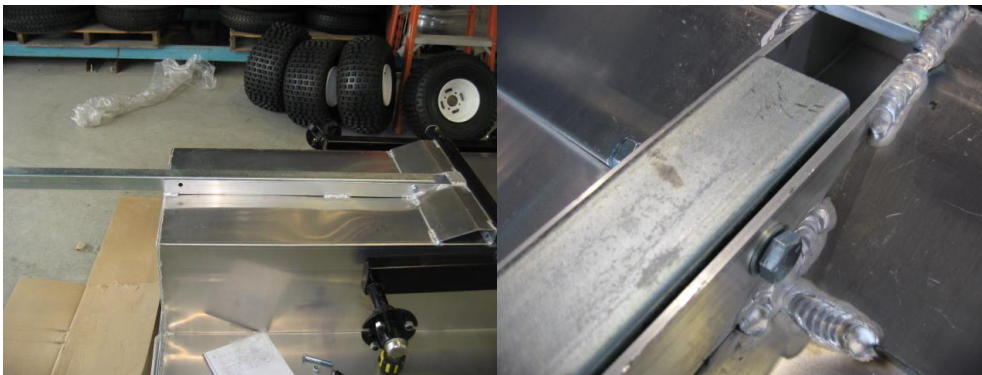
By following these simple instructions, you will maximize the life of your trailer and help safely transport your cargo.

1605 Tub Trailer

1. Un Wrap and remove from package & crate. Turn upside down.



2. Place tongue in channel on bottom. Line up holes place 1-11mmx80mm bolt with a washer on both sides in hole. Place 1-18 mm Nylock nut on & tighten.



3. Remove the pin on Axle & washer.

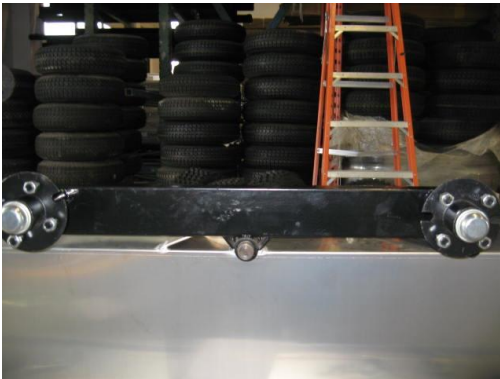


ASSEMBLY MANUAL / www.marlonproducts.com

4. Remove the pivoting axle.



Turnover and reinstall.



5. Reinstall washer then pin.

6. Inflate tires to the correct PSI. Then place water around the rim to check the bead for air leaks.

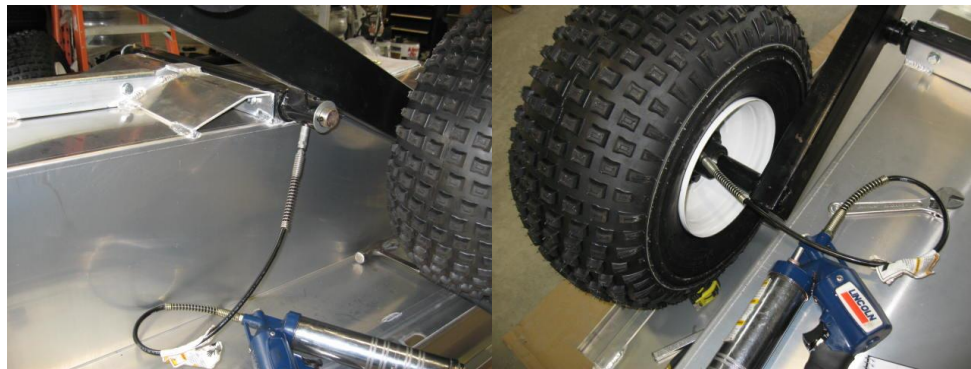


ASSEMBLY MANUAL / www.marlonproducts.com

7. If you notice air bubbles you may have a slow leak. Take the tire and bounce it on even ground and test the rim once again with water to make sure the bead has sealed around the rim properly. Make sure to check both sides of the tire.



8. Lightly grease hubs & axle pivots.

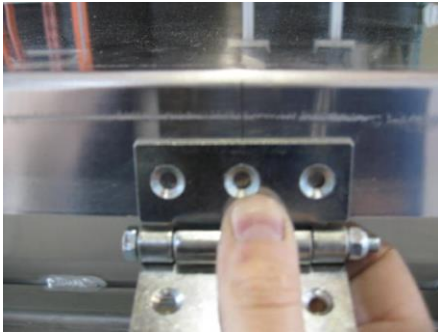


1605 Lid Assembly

1. Measure 15 ¼" from edge on left side of the trailer lid. Mark with a pencil.



2. Place center hole on mark, mark holes.



3. Drill hole marks with 7/32" drill bit.

4. Place hinge on inside of lid edge and bolt into position, repeat for other hinge.



ASSEMBLY MANUAL / www.marlonproducts.com

5. Center lid to trailer measure and mark for hinge holes on side of trailer.



6. Drill holes on lid of trailer.
7. Install on outside of trailer lip and inside of lid lip.



8. Place & mark holes for clip above inner stake pocket on left side of the trailer punch and drill as before.



9. Place latch assembly on stake pocket mark holes for drilling.

ASSEMBLY MANUAL / www.marlonproducts.com



10. Install and then adjust for a tight fit.



11. Repeat on other side.

12. Measure 10" from the inside of the stake pocket on the hinged side along the back of the trailer.

13. Mark & drill a hole for the bottom of the shock hinge, on outside of trailer. (Note extra washer to prevent rubbing)



14. Mark & drill a hole for the top of the shock hinge from the hinged side of lid measure 26" from inside. Punch drill & install.

ASSEMBLY MANUAL / www.marlonproducts.com



15. Repeat above steps on other side for other hinged shock.

16. Place lid rack over holes on top of lid attach with nuts & bolts.



Your done! Enjoy your new Marlon ATV 1605 trailer.