

# AG SHIELD



**12" Cross Auger for MacDon 972  
15 ft (405874) 21 ft (405875) 25 ft (ASM part # 405876),  
30 ft(405877) and MacDon 972/973 36 ft ( 405878) ft  
Headers-**

**Direct drive**

**OPERATOR'S HANDBOOK AND PARTS MANUAL**

Ag Shield Manufacturing  
Box 9, Benito, Manitoba R0L 0C0  
Phone 800-561-0132 or 204-539-2000  
Fax 204-539-2130  
Email address: [sales@agshield.com](mailto:sales@agshield.com)  
Web site at <http://www.agshield.com>

Printed in Canada

July 13 2016

Revision 3

-Part No 405905



# 1. TABLE OF CONTENTS

1.	TABLE OF CONTENTS .....	3
2.	INTRODUCTION AND SIGN-OFF FORM .....	4
3.	SAFETY .....	5
3.1.	SAFETY OVERVIEW .....	6
3.2.	GENERAL SAFETY .....	6
3.3.	MAINTENANCE SAFETY .....	7
3.4.	HYDRAULIC SAFETY .....	7
3.5.	STORAGE SAFETY .....	7
3.6.	TRANSPORT SAFETY .....	7
3.7.	REFUELING SAFETY .....	8
3.8.	TIRE SAFETY .....	8
3.9.	OPERATING SAFETY .....	8
3.10.	CROSS AUGER SAFETY .....	8
3.11.	SAFETY DECALS .....	9
4.	SETUP FROM SHIPPING MODE .....	10
4.1.	INSTALLATION VIEWS FOR 25, 30 AND 36 FOOT KIT'S 405876, 405877 AND 405878 .....	10
4.2.	INSTALLATION VIEWS OF MACDON 972/973 CROSS AUGERS RIGHT AND LEFT END MOUNTS FOR KIT'S 405876, 405877 AND 405878 .....	12
4.3.	INSTALLATION VIEWS OF MACDON 972/973 CROSS AUGERS <u>CENTER</u> MOUNTS FOR KIT'S 25 FT -405876, --30 FT 405877-- 36 FT -405878 .....	14
4.4.	INSTALLATION CENTER WELD ON FOR 25 FOOT KIT 405876 .....	16
4.5.	MOTOR INSTALLATION .....	19
5.	OPERATIONS .....	20
5.1.	FIELD SETTING THE CROSS AUGER .....	20
6.	CROSS AUGER PARTS .....	21
6.1.	TABLE OF RH AND LH AUGER PART NUMBERS FOR MACDON 972/973 25, 30F AND 36FT HEADERS .....	21
6.2.	OLDER MODEL HEADERS FOR 972 MACDON .....	21
6.3.	RIGHT HAND END MOUNT DRIVE 15,21, 25, 30, 36 FT 972 MACDON .....	22
6.4.	LEFT END MOUNT 972 MACDON 15, 21, 25, 30 , 36 FT .....	23
6.5.	PARTS MACDON 972 25 FT KIT # 405876 CENTER MOUNT WELD ON .....	24
6.6.	PARTS MACDON 972 30 FT KIT # 405877 CENTER MOUNT BOLT ON .....	25
6.7.	PARTS MACDON 972 36 FT KIT # 405878 CENTER MOUNT BOLT ON .....	26
6.8.	PARTS MACDON 972 15-21 FOOT KIT 405874-405875 .....	27
6.9.	STRIPPER BAR INSTALLATION .....	28
7.	WARRANTY .....	28



### 3. SAFETY

## SAFETY ALERT SYMBOL

This Safety Alert symbol means:  
**ATTENTION! BECOME ALERT!**  
**YOUR SAFETY IS INVOLVED!**

The Safety Alert symbol identifies important safety messages on the Ag Shield Cross auger and in the manual. When you see this symbol, be alert to the possibility of personal injury or death. Follow the instructions in the safety message.



### 3 Big Reasons

**Accidents Disable and Kill**  
**Accidents Cost**  
**Accidents Can Be Avoided**

#### SIGNAL WORDS:

Note the use of the signal words **DANGER**, **WARNING** and **CAUTION** with the safety messages. The appropriate signal word for each message has been selected using the following guide-lines:

- DANGER** - An immediate and specific hazard which **WILL** result in severe personal injury or death if the proper precautions are not taken.
- WARNING** - A specific hazard or unsafe practice which **COULD** result in severe personal injury or death if proper precautions are not taken.
- CAUTION** - Unsafe practices which **COULD** result in personal injury if proper practices are not taken, or as a reminder of good safety practices.

### 3.1. SAFETY OVERVIEW

**YOU** are responsible for the **SAFE** operation and maintenance of your Ag Shield Cross auger. **YOU** must ensure that you and anyone else who is going to operate, maintain or work around the canola pusher be familiar with the operating and maintenance procedures and related **SAFETY** information contained in this manual. This manual will take you step-by-step through your working day and alerts you to all good safety practices that should be adhered to while operating the canola pusher.

Remember, **YOU** are the key to safety. Good safety practices not only protect you but also the people around you. Make these practices a working part of your safety program. Be certain that **EVERYONE** operating this equipment is familiar with the recommended operating and maintenance procedures and follows all the safety precautions. Most accidents can be prevented. Do not risk injury or death by ignoring good safety practices.

- Cross auger owners must give operating instructions to operators or employees before allowing them to operate the Cross auger, and at least annually thereafter per OSHA regulation 1928.57.
- The most important safety device on this equipment is a **SAFE** operator. It is the operator's responsibility to read and understand **ALL** Safety and Operating instructions in the manual and to follow these. All accidents can be avoided.
- A person who has not read and understood all operating and safety instructions is not qualified to operate the machine. An untrained operator exposes himself and bystanders to possible serious injury or death.
- Do not modify the equipment in any way. Unauthorized modification may impair the function and/or safety and could affect the life of the equipment.
- Think SAFETY! Work SAFELY!

### 3.2. GENERAL SAFETY

1. Read and understand the Operator's Manual and all safety signs before operating, maintaining, adjusting the Cross auger.
2. Only trained competent persons shall operate the cross auger. An untrained operator is not qualified to operate the machine.



3. Have a first-aid kit available for use should the need arise and know how to use it.



4. Have a fire extinguisher available for use should the need arise and know how to use it.



5. Do not allow riders.

6. Wear appropriate protective gear. This list includes but is not limited to:



- A hard hat
  - Protective shoes with slip resistant soles
  - Protective glasses or goggles
  - Heavy gloves
  - Hearing protection
7. Stop the engine, place all controls in neutral, set park brake, remove ignition key and wait for all moving parts to stop before servicing, adjusting, repairing or unplugging.
  8. Review safety related items with all personnel.

### 3.3. MAINTENANCE SAFETY

1. Review the Operators Manual and all safety items before working with, maintaining or operating the Cross auger.
2. Stop the tractor engine, place all controls in neutral, set park brake, remove ignition key, wait for all moving pads to stop before servicing, adjusting, or repairing.
3. Before applying pressure to a hydraulic system, make sure all components are tight and that steel lines, hoses and couplings are not damaged.
4. Relieve pressure from hydraulic circuit before servicing or disconnecting from tractor.
5. Keep hands, feet, clothing and hair away from all moving and/or rotating parts.
6. Clear the area of bystanders, especially children, when carrying out any maintenance and repairs or making any adjustments.
7. Place stands or blocks under the frame before working beneath the machine.

### 3.4. HYDRAULIC SAFETY

1. Always place all tractor hydraulic controls in neutral before dismounting.
2. Make sure that all components in the hydraulic system are kept in good condition and are clean.
3. Replace any worn, cut, abraded, flattened or crimped hoses and steel lines.
4. Do not attempt any makeshift repairs to the hydraulic lines, fittings or hoses by using tape, clamps or cements. The hydraulic system operates under extremely high-pressure. Such repairs will fail suddenly and create a hazardous and unsafe condition.
5. Wear proper hand and eye protection when searching for a high-pressure hydraulic leak. Use a piece of wood or cardboard as a backstop instead of hands to isolate and identify a leak.
6. If injured by a concentrated high-pressure stream of hydraulic fluid, seek medical attention immediately. Serious infection or toxic reaction can develop from hydraulic fluid piercing the skin surface.

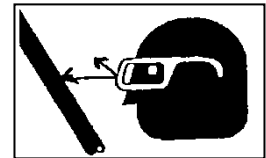
7. Before applying pressure to hydraulic system make sure that all connections are tight and that all hoses and fittings are in good condition.

### 3.5. STORAGE SAFETY

1. Store unit in an area away from human activity.
2. Do not permit children to play on or around the stored Cross auger.

### 3.6. TRANSPORT SAFETY

1. Read and understand ALL the information in the Operator's Manual regarding procedures and SAFETY when operating the Cross auger in the field and/or on the road.
2. Check with local authorities regarding machinery transport on public roads. Obey all applicable laws and regulations.
3. Always travel at a safe speed. Use caution when making corners or meeting traffic.



4. Make sure the SMV (Slow Moving Vehicle) emblem and all the lights and reflectors that are required by the local highway and transport authorities are in place, are clean and can be seen clearly by all overtaking and oncoming traffic. Daybreak and dusk are particularly dangerous and pilot vehicles are recommended.
5. Ensure that the trailer is hitched positively to the towing vehicle. Always use a safety chain between the trailer and the tractor.
6. Keep to the right and yield the right-of-way to allow faster traffic to pass. Drive on the road shoulder, if permitted by law.
7. Always use hazard warning flashers on the Cross auger when transporting unless prohibited by law.

### 3.7. REFUELING SAFETY

1. Handle fuel with care. It is highly flammable.



2. Do not refuel the machine while smoking or when near open flame or sparks.

3. Stop engine before refueling. Clean up spilled fuel before restarting engine.

### 3.8. TIRE SAFETY

1. Failure to follow proper procedures when mounting a tire on a wheel or rim can produce an explosion, which may result in serious injury or death.
2. Do not attempt to mount a tire unless you have the proper equipment and experience to do the job.
3. Have a qualified tire dealer or repair service perform required tire maintenance.
4. Operate the tires at the pressures, loads, and speeds suggested by the manufacturer.

### 3.9. OPERATING SAFETY

1. Read and understand the Operator's Manual and all safety signs before using.
2. Stop engine place all controls in neutral, set park brake, remove ignition key, wait for all moving parts to stop before servicing, adjusting, repairing or unplugging.
3. Before conditioning a field, be familiar with all potential hazards: trees, rocks ditches, gullies, etc. Plan your route to avoid hazards. Keep Cross auger width in mind when maneuvering to avoid obstacles.
4. Keep hands, feet, hair and clothing away from all moving and/or rotating parts.
5. Keep all shields and guards in place when operating.
6. Do not allow riders on the Cross auger or tractor during operation or transporting.
7. Clear the area of all bystanders, especially children, before starting.

8. Stay away from machine when folding deflectors. Keep others away.
9. Before applying pressure to the hydraulic system, make sure all components are tight and that steel lines, hoses and couplings are not damaged.
10. Review safety instructions annually

### 3.10. CROSS AUGER SAFETY

The cross auger has sufficient power to sever limbs and cause serious to fatal injury. Always stop the cross auger before dismounting. Always be certain that no one is in front of combine header Shield before engaging the auger drive.

When greasing the auger, do so with the combine motor shut off and the park brake securely set. Install the **stop bolt** in flighting path as an extra precaution only after the combine motor is shut off and park brake applied.

Never attempt to help the crop move along the canvases with a wrench or other item that might get into the auger and draw the wrench holder into the auger.



### 3.11. SAFETY DECALS

Become familiar with these decals and the hazards they are marking.



part #113522

part #113524



part # 113552

#### 4. Setup from Shipping Mode

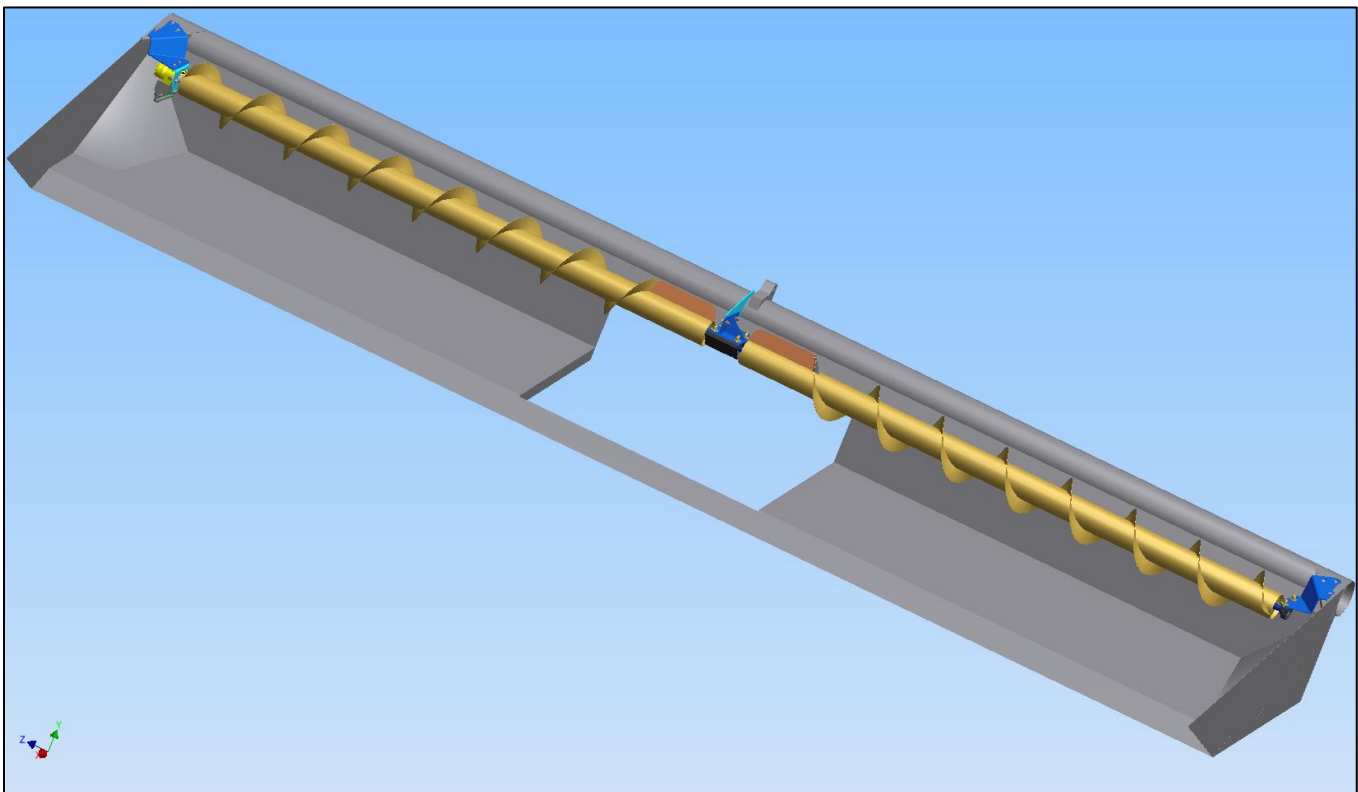
Operator’s handbook for Ag Shield right Drive Cross auger to fit on to a 36 ft MacDon 972 header-  
Ag Shield # 405778

<b>Figure 1</b>	Complete header 25 foot Kit 405876 .....	11
<b>Figure 2</b>	Complete header 30 foot Kit 405877 .....	11
<b>Figure 3</b>	Complete header 36 foot Kit 405878 .....	11
<b>Figure 4</b>	Right Hand Mount and Drive for 25, 30 and 36 Foot .....	12
<b>Figure 5</b>	Right Hand End showing Stop Bolt and Instructions .....	12
<b>Figure 6</b>	Left Hand End Mount for 25, 30 and 36 Foot – kit’s 405876, 405877 and 405878 .....	13
<b>Figure 7</b>	Left Hand End Mount for kit’s 405876, 405877 and 405878 (Top View) .....	13
<b>Figure 9</b>	Center Auger Mount and Bolt On Hanger (light blue) with Plastic Cover for 30 Foot Kit 405877 .....	14
<b>Figure 10</b>	Center Auger Mount and Weld On Hanger (light blue) with Plastic Cover for 36 Foot Kit 405878 .....	14
<b>Figure 11</b>	Center auger mount and Adapter without plastic cover 36 ft.....	15
<b>Figure 8</b>	Center Auger Mount and Weld On Hanger (light blue) with Plastic Cover for 25 Foot Kit 405876 .....	15
<b>Figure 10</b>	Install the joiner link into chain <b>coupler with one side bent out of way</b> . .....	17
<b>Figure 11</b>	Hoses on headers with Right hand drive cross augers .....	18
<b>Figure 12</b>	Sauer Motor speed control.....	20

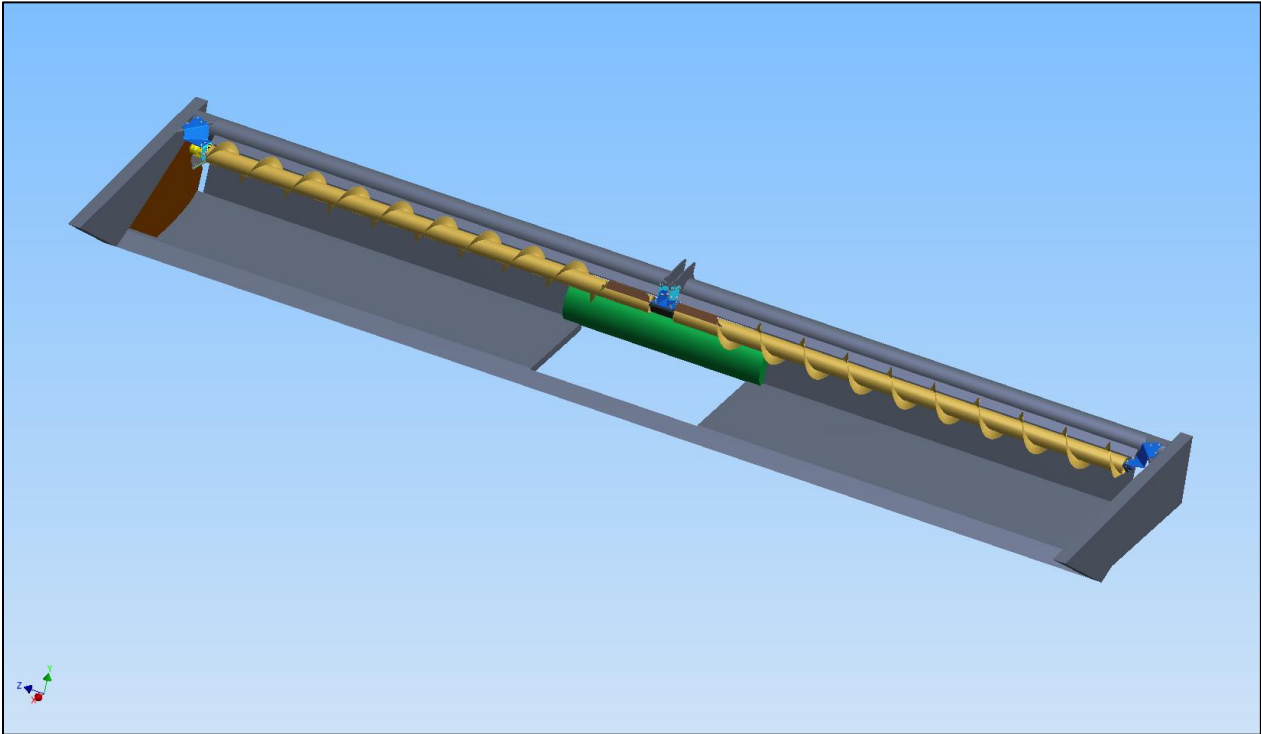
**Installation sequence 30- 36 foot is different from the 25 foot at the center only- the 25 foot center is weld on.**

**Some old headers will require a welder and drill for mounting the brackets. Center will be weld on and ends will need holes drilled.**

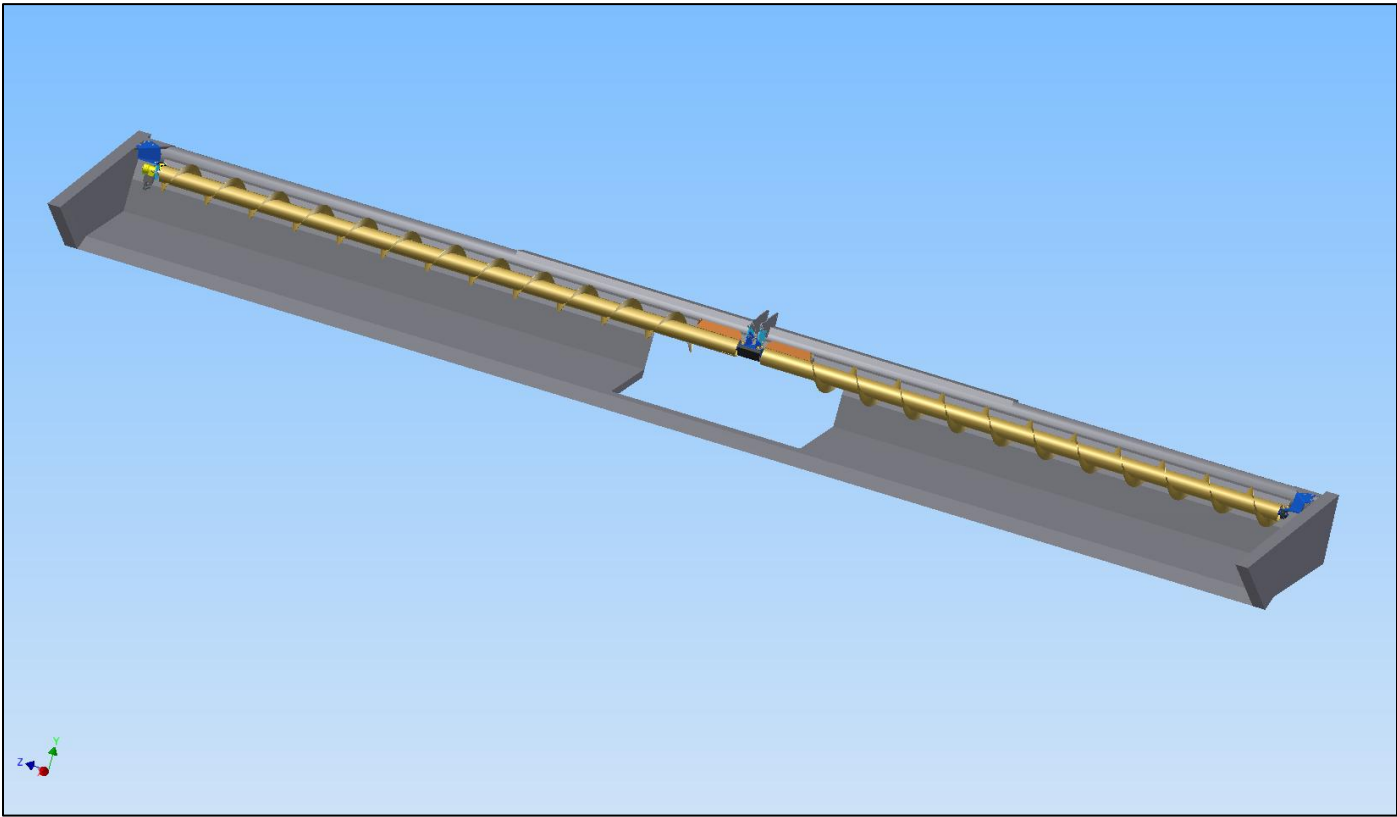
#### 4.1. INSTALLATION VIEWS FOR 25, 30 AND 36 FOOT KIT’S 405876, 405877 AND 405878



**FIGURE 1** COMPLETE HEADER 25 FOOT KIT 405876



**FIGURE 2** COMPLETE HEADER 30 FOOT KIT 405877

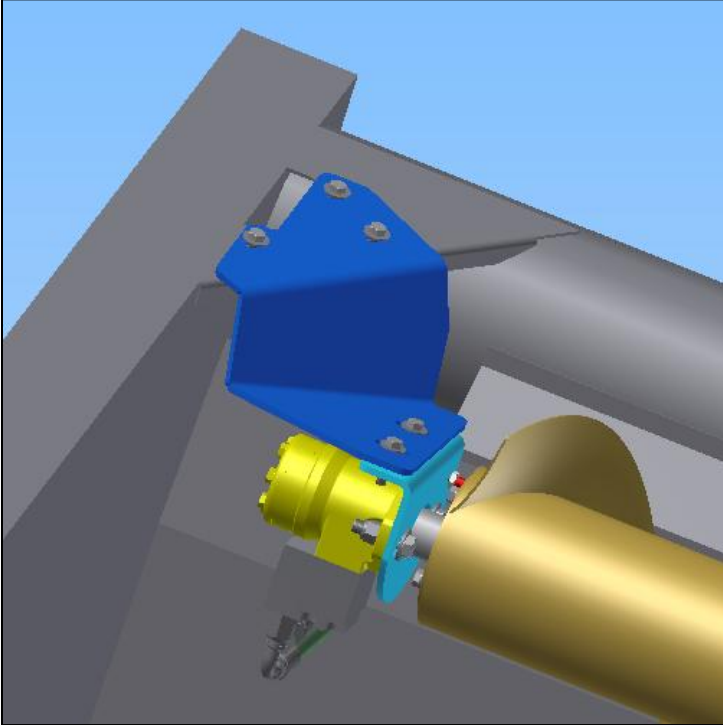


**FIGURE 3** COMPLETE HEADER 36 FOOT KIT 405878

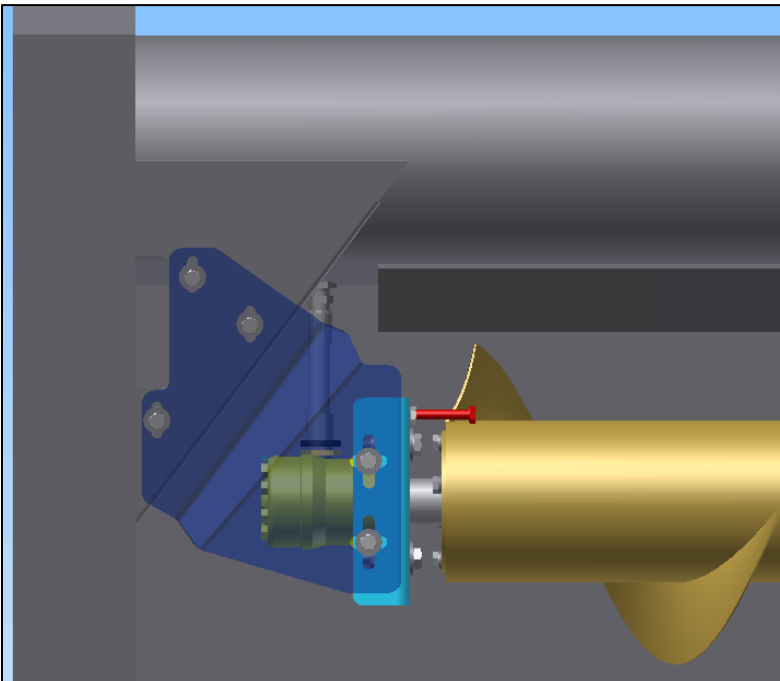
## 4.2. INSTALLATION VIEWS OF MACDON 972/973 CROSS AUGERS RIGHT AND LEFT END MOUNTS FOR KIT'S 405876, 405877 AND 405878

All 972 models have the same end mounts

1. Locate the right hand mount, and bolt the mount in place.



**FIGURE 4** RIGHT HAND MOUNT AND DRIVE FOR 25, 30 AND 36 FOOT

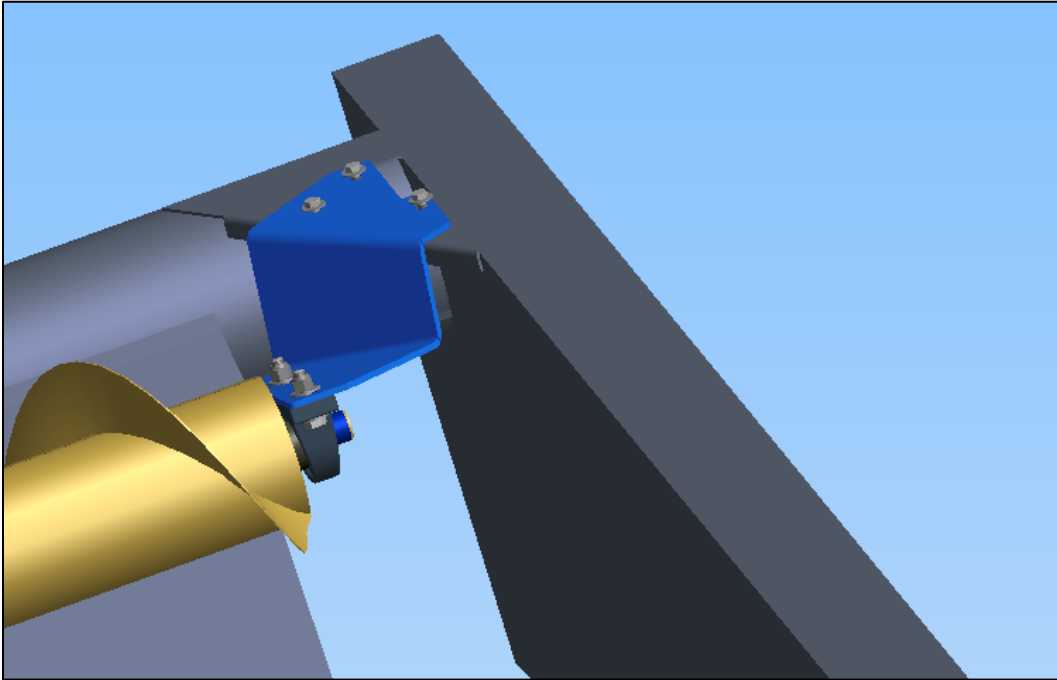


**FIGURE 5** RIGHT HAND END SHOWING **STOP BOLT** AND INSTRUCTIONS

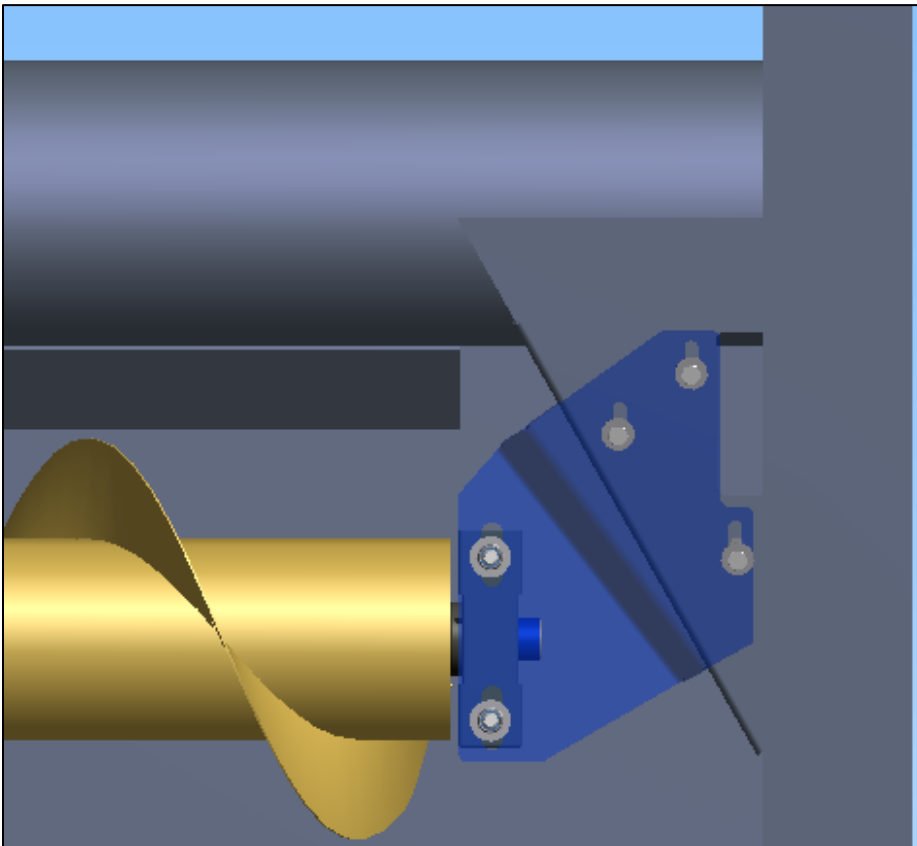
Note the **stop bolt** is used to completely stop the auger from turning IF you have a reason. The normal position is to have the **stop bolt** stored on the motor side of the blue mounting bracket.

To use the **stop bolt** - install the bolt into the path of the rotating auger as show, and then completely open the bypass adjusting valve so that excessive back pressure is not built up in the canvas circuit.

1. Locate the left hand mount, and . bolt the mount in place

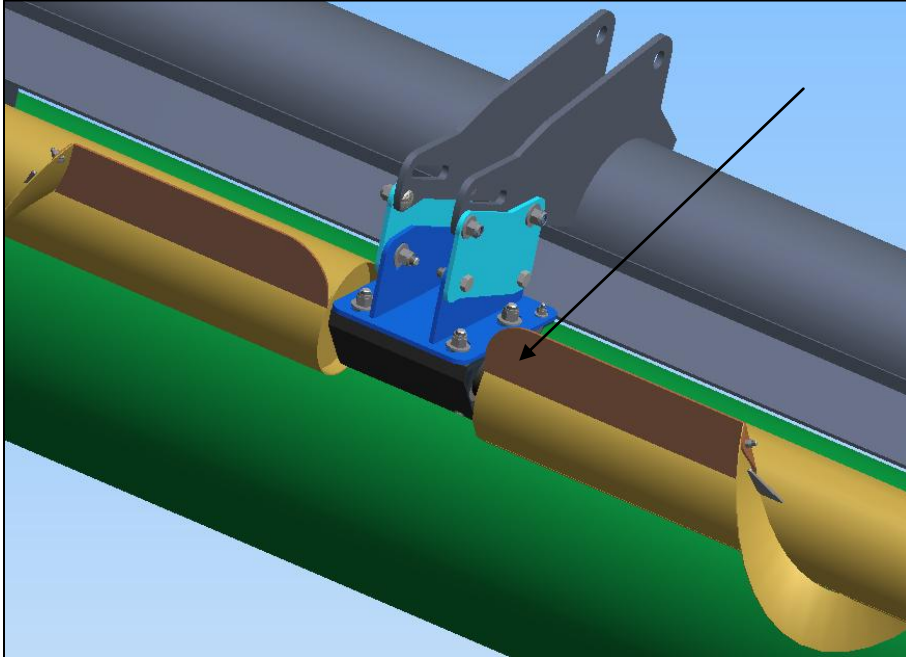


**FIGURE 6** LEFT HAND END MOUNT FOR 25, 30 AND 36 FOOT – KIT'S 405876, 405877 AND 405878

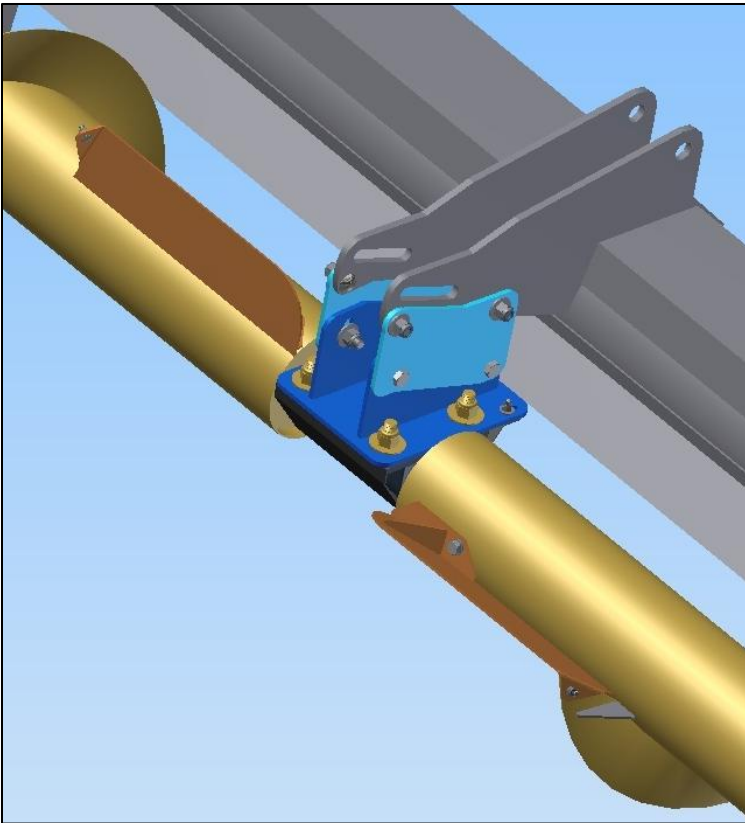


**FIGURE 7** LEFT HAND END MOUNT FOR KIT'S 405876, 405877 AND 405878 (TOP VIEW)

**4.3. INSTALLATION VIEWS OF MACDON 972/973 CROSS AUGERS CENTER MOUNTS FOR KIT'S 25 FT -405876, --30 FT 405877-- 36 FT -405878**

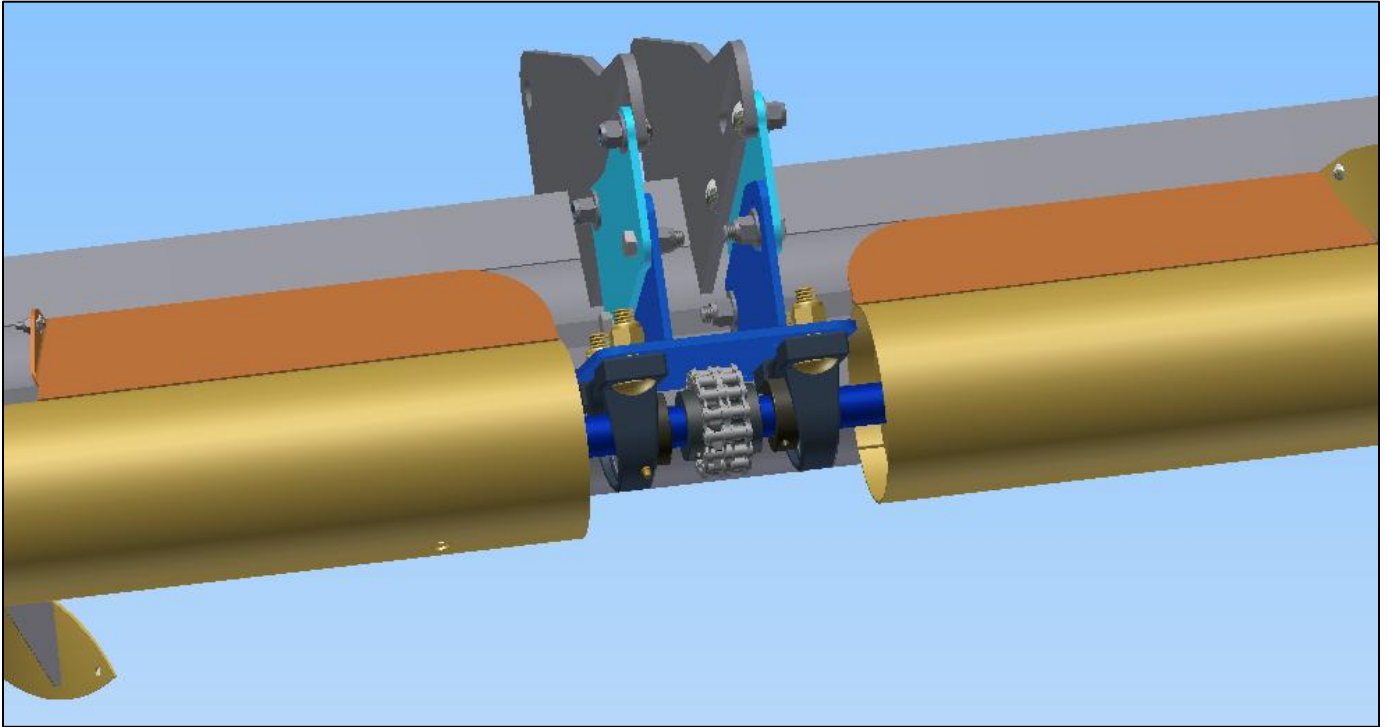


**FIGURE 8** CENTER AUGER MOUNT AND BOLT ON HANGER (LIGHT BLUE) WITH PLASTIC COVER FOR 30 FOOT KIT 405877

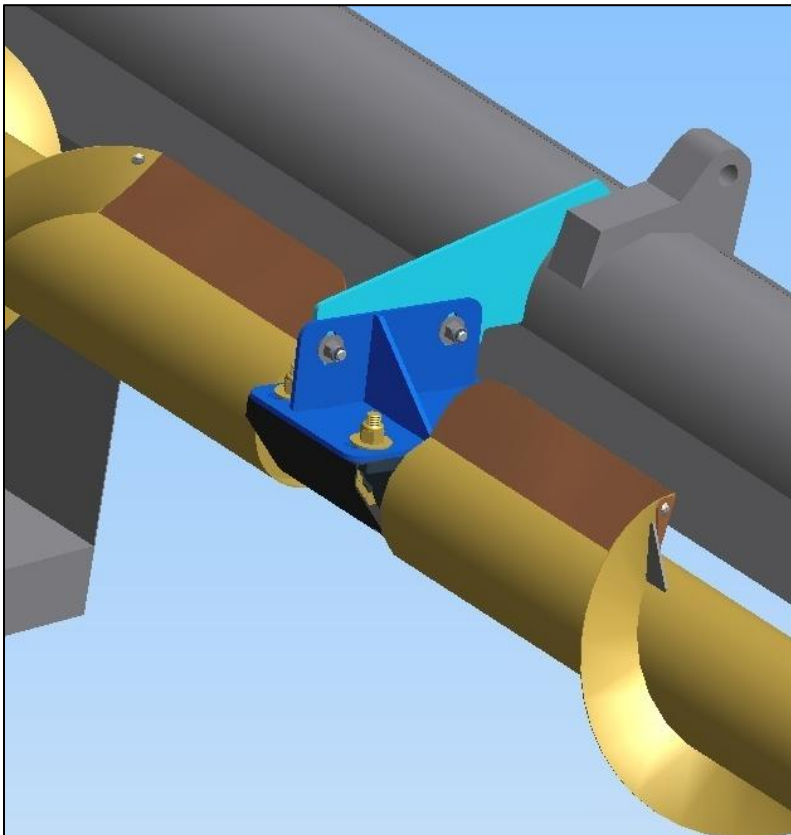


**FIGURE 9** CENTER AUGER MOUNT AND WELD ON HANGER (LIGHT BLUE) WITH PLASTIC COVER FOR 36 FOOT KIT 405878





**FIGURE 10** CENTER AUGER MOUNT AND ADAPTER WITHOUT PLASTIC COVER 36 FT  
See detailed welding instruction below Figure 8

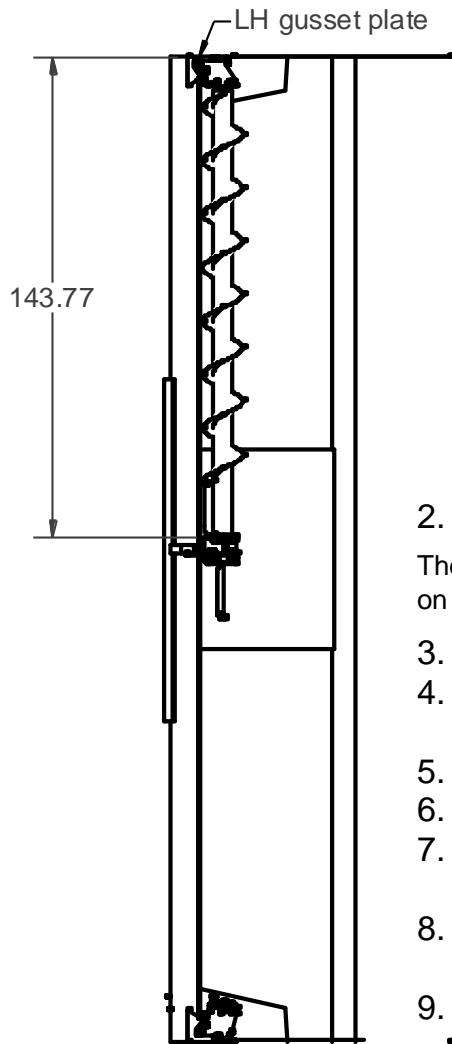


**FIGURE 11** CENTER AUGER MOUNT AND WELD ON HANGER (LIGHT BLUE) WITH PLASTIC COVER FOR 25 FOOT KIT 405876

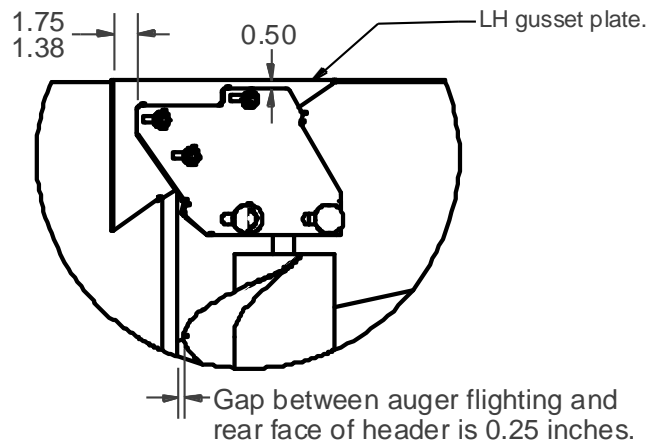
## 4.4. INSTALLATION CENTER WELD ON FOR 25 FOOT KIT 405876

### Steps:

1. Clamp in place the left end mount (blue).



Center mount hanger.



2. Drill the holes with  $1\frac{1}{32}$  " drill bit.

The goal is to have the auger flighting  $\frac{1}{4}$  " from the stripper bar on the header, so that the crop may not wrap around the auger.

3. Install the LH end mount and bearing assembly.

4. Install the RH end mount (blue) using the dimensions above.

5. Bolt on the motor mount (light blue).

6. Bolt on the motor and shim assembly.

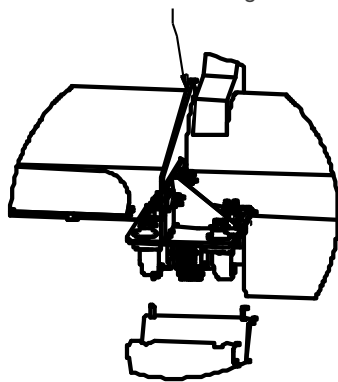
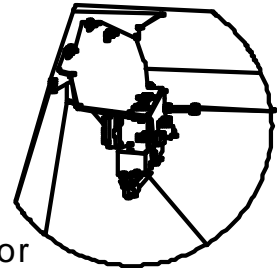
7. Bolt on the bearing assemblies on the Center Mount. Finger tighten.

8. Run a string from the bottom of the motor shaft through the Center Mount and LH bearings.

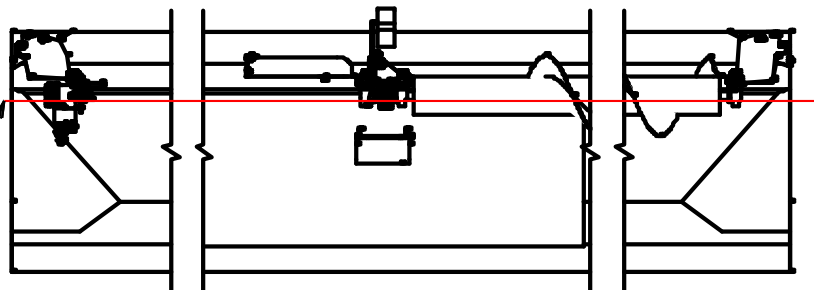
9. Level the position of the LH edge of Center Mount 143.77 inches from the side edge of the LH gusset plate welded to the top of the MacDon frame.

10. Tack weld the Center Mount Hanger (light Blue) to the round Macdon frame.

11. Remove the motor and bearing assemblies for placement on the augers for auger installations.



Leveling string set along bottom of LH bearing and motor shaft.





Observe that the right auger is  $\frac{1}{4}$  inch from the frame to the flighting, BUT ALSO lined up to have the chain coupler easily wrapped around the 2 sprockets. Snug both center bearings before installing chain coupler.

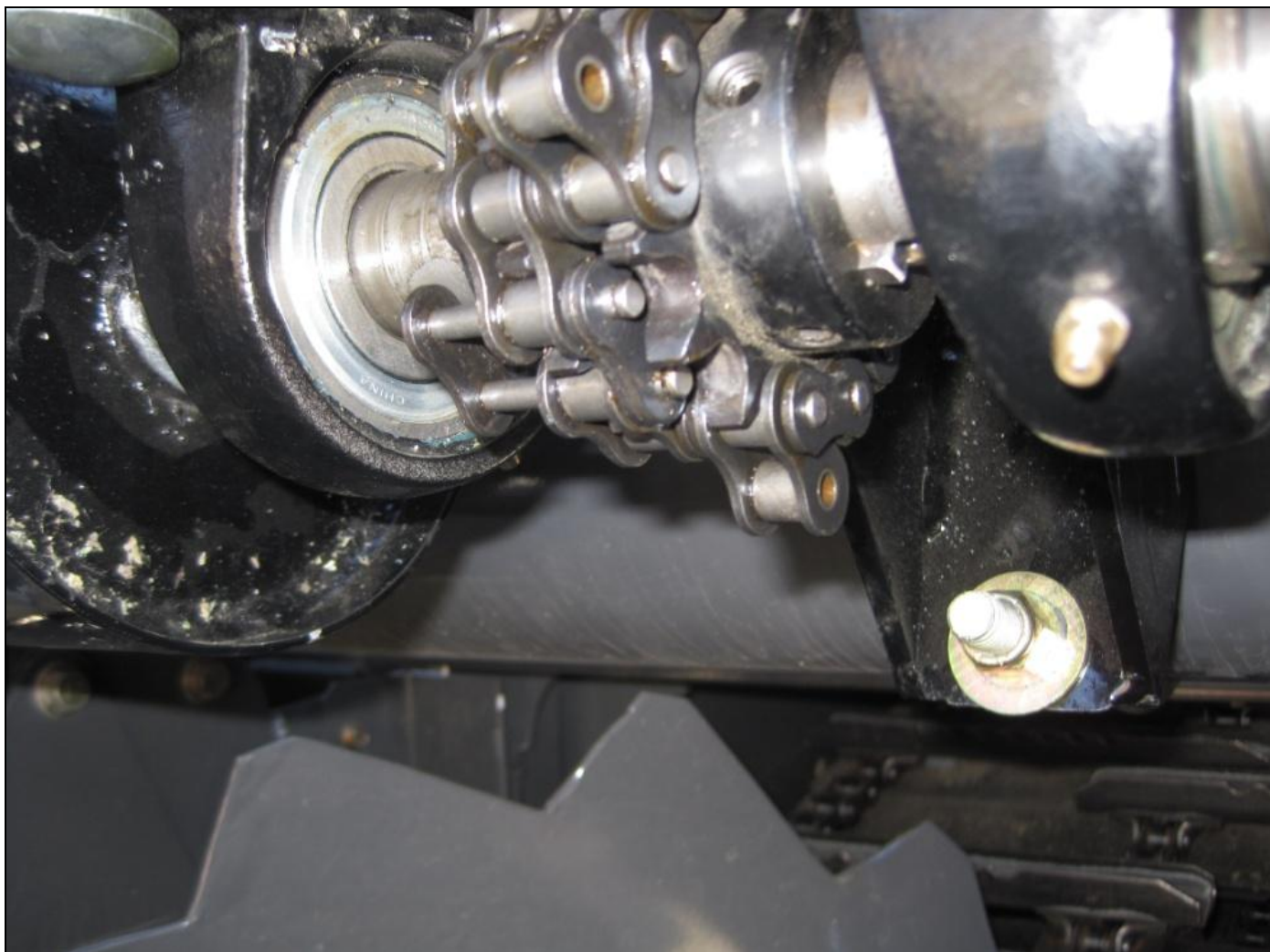


Figure 12 Install the joiner link into chain coupler with one side bent out of way .

1. Install hydraulic hoses as follows:
2. install the adapter and hoses on to the new Ag Shield motor as shown in parts page The rear hose of the motor, part #118816 will connect to fitting "G" below- the tank return line of the draper motor becomes the pressure line of the Ag shield auger motor. .
3. The forward hose on the Ag Shield motor- part # 118825 will connect to hose "H" below.
4. Test direction of rotation to be down on the front of the auger. for operation in field, set speed of the canvases, and use the flow control supplied to set the auger flighting speed to be 5% or slightly greater than the canvases. see operations below. Below is not a photo of a 1042 Case - but the principal applies, Determine the correct rotation of the motor as follows. The oil will enter the pressure port of the motor and go the long way around the motor to arrive the tank line



FIGURE 13 HOSES ON HEADERS WITH RIGHT HAND DRIVE CROSS AUGERS



**4.5. MOTOR INSTALLATION**



Notch tin in side of header for motor to fit in.

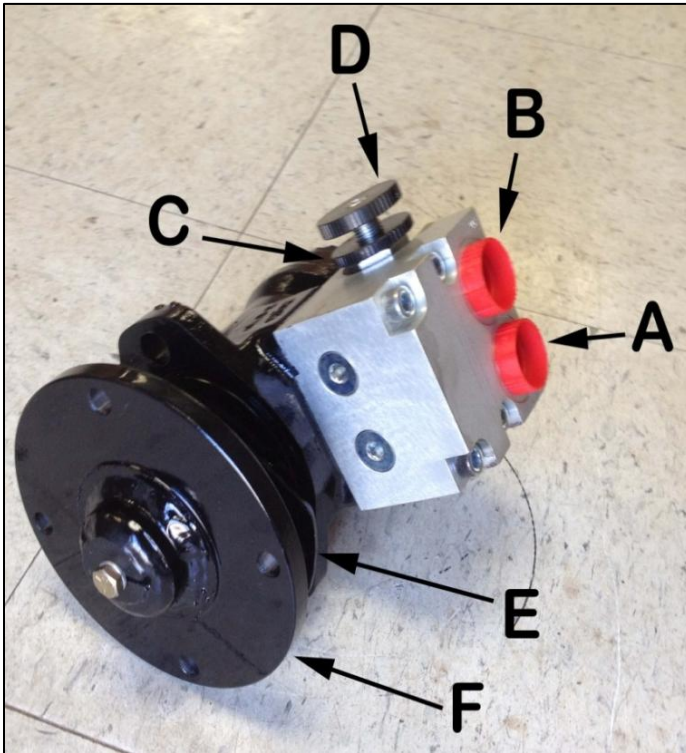
## 5. OPERATIONS



### **DANGER**

**Stay clear of auger whenever it is running**

### 5.1. FIELD SETTING THE CROSS AUGER



**FIGURE 14 SAUER MOTOR SPEED CONTROL**

#### **Terminology**

- A:** Return or tank line
- B:** Pressure line
- C:** Lock wheel
- D:** Auger speed adjustment
- E:** Shim for hydraulic motor mount
- F:** Direct driver motor adapter

Cross augers can only be adjusted for speed of rotation. In many conditions, the correct speed for many crops would be to have the flighting advancing the crop along the canvas 5% or slightly faster than the canvas speed. To increase auger speed, loosen lock wheel A counterclockwise, rotate adjust valve C clockwise, relock the valve by turning A clockwise. Closing this valve reduces the bypass of oil around the hydraulic motor. To slow down the rpm of the auger, rotate adjust valve C counterclockwise.

Observe the auger from the combine cab or swather operating platform. Focus your eye on one auger flighting and compare to a particular canvas slat. The auger can be adjusted to run at the same rate in feet per minute. As desired, slightly increase the cross auger to have it pulling ahead faster than the canvas.

In peas, augers can often be operated at a very slow speed--- 30% of canvas speed, and still feed as much crop into combine. When augers turn slower, there are fewer tendencies to wrap.

If wrapping occurs at the center of the header, try removing one or both of the bolts on paddles. In some conditions the paddles are an advantage, in some conditions the paddles are a disadvantage.

## 6. Cross Auger Parts

### 6.1. TABLE OF RH AND LH AUGER PART NUMBERS FOR MACDON 972/973 25, 30F AND 36FT HEADERS

KIT No.	MAKE	WIDTH	LH AUGER Part No.	RH AUGER Part No.
405876	MD 972	25 FT	406290	408230
405877	MD 972	30 FT	406336	408233
405878	MD 972/973	36 FT	406391	408138

### 6.2. OLDER MODEL HEADERS FOR 972 MACDON

*If your header is an older model 2002 or earlier then it will require welding and drilling to attach the plates to the header.*

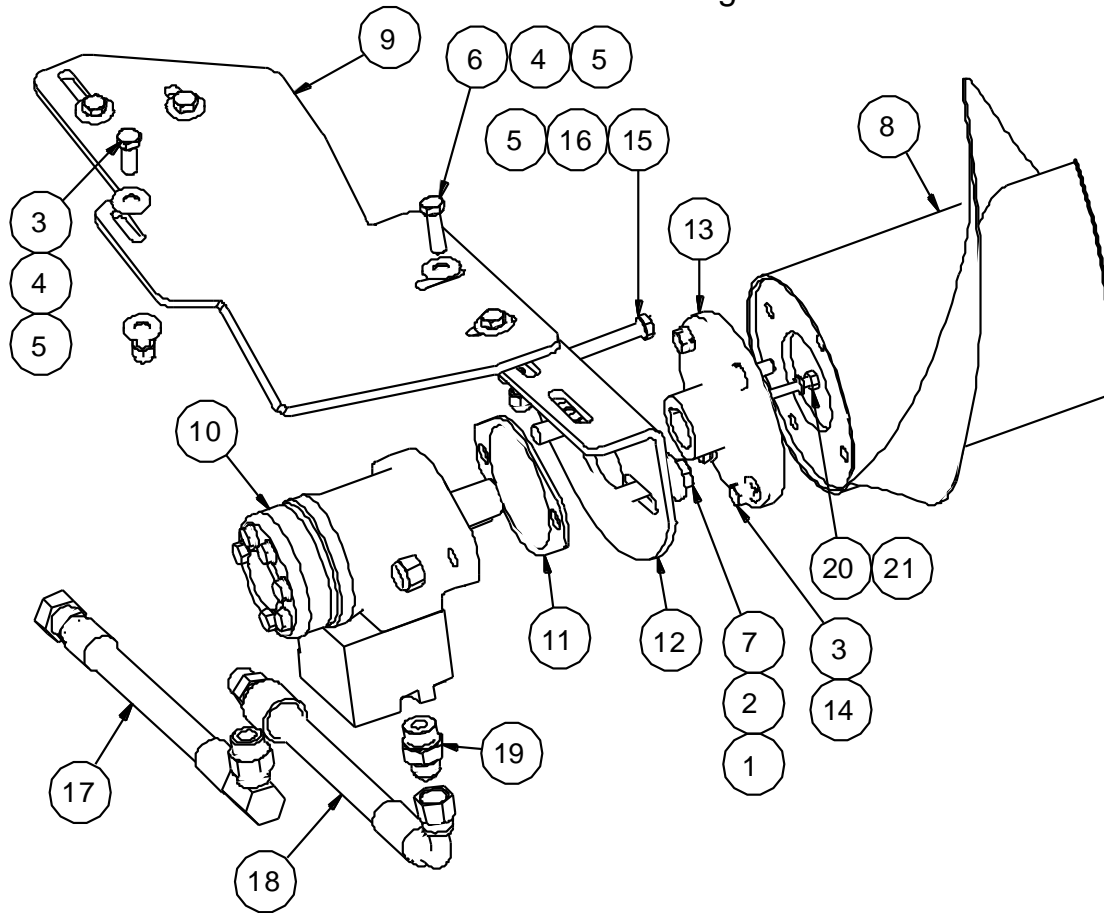
*Start by drilling the end plate holes using the plate as a template.*

*Do the same at the other end.*

*Place the auger into the end mounts and bolt the auger to the center mount plate.  
then lift the center into place and weld it solid to the reel mount.*

### 6.3. RIGHT HAND END MOUNT DRIVE 15,21, 25, 30, 36 FT 972 MACDON

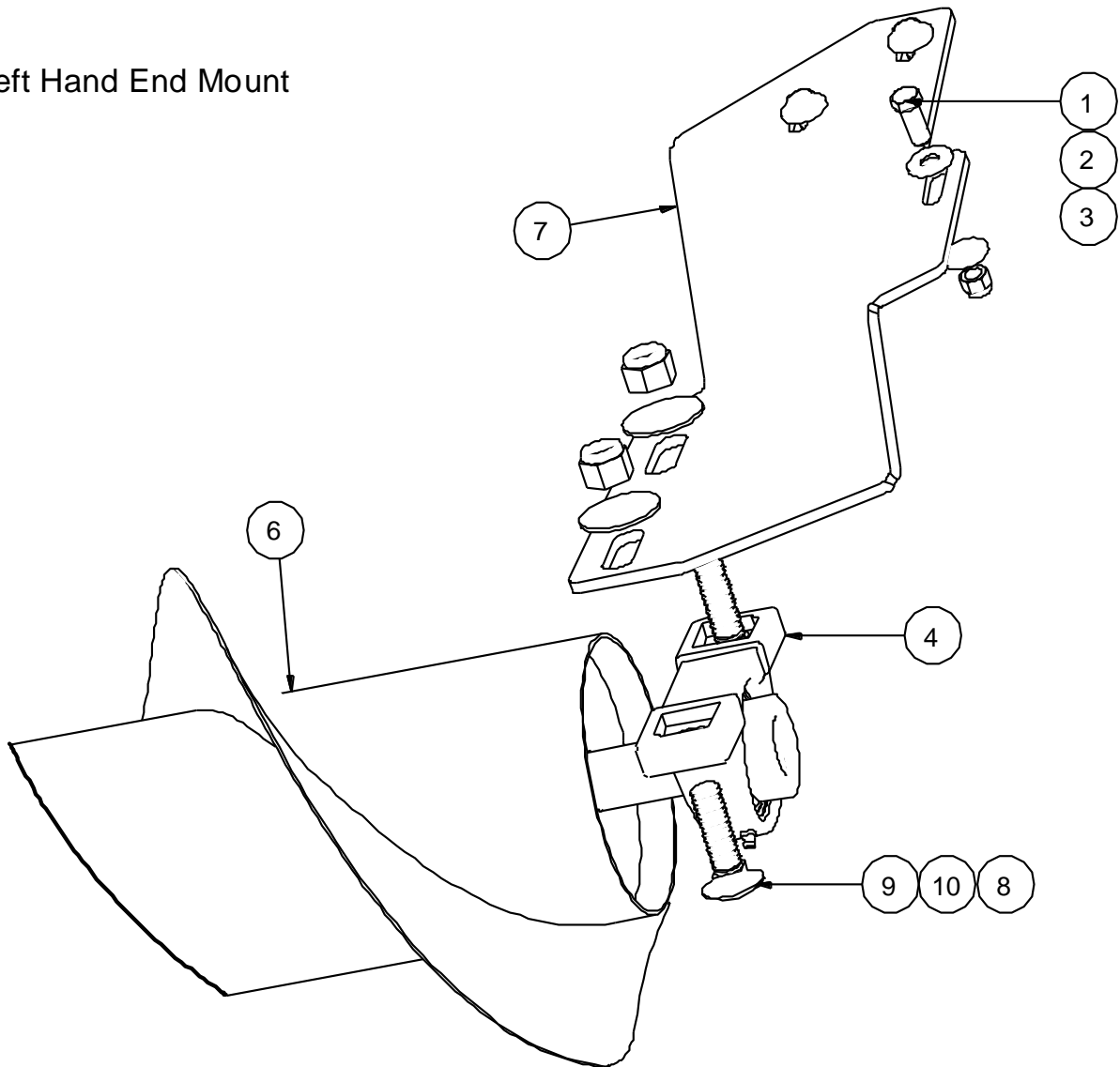
Right End Mount and Drive



ITEM	QTY	PART NUMBER	ITEM	QTY	PART NUMBER
1	10	102125 nut nylok 1/2" nc gr5 pltd	12	1	408111 hyd motor mt macdon dirdrv
2	10	101106 flat washer 1/2"	13	1	407105 direct drive motor adapter wldt
3	10	100602 bolt 3-8 X 1 gr5 pltd nc	14	4	101145 lock washer 3/8"
4	16	101105 flat washer 3/8"	15	1	100610 bolt 3-8 X 3 gr5 pltd nc
5	9	102123 nut nylok 3/8" nc gr5 pltd	16	1	102131 nut jam 3-8 nc gr5 1-2 HGT
6	2	100603 bolt 3-8 X 1 1-4 gr5 pltd nc	17	1	118816 hose assy 1_2 x 54 lg 10 male ORB 90 x 08 FJIC
7	2	100703 bolt 1-2 X 2 gr5 pltd nc	18	1	118825 Hyd hose 08 x 40 x 08FJICS90 x 08MJIC
8	1	408230 972 MacDon 25ft Auger Wldmt RH dirdrv	19	1	117984 ADAPTER STR 10MORB X 08 MJIC
9	1	408137 MacDon 972 mtr mt plate RH dirdrv	20	1	100404 HEX HD BOLTS 1-4 NC X 1 1-4
10	1	117170 motor with flow control 5.9 danfoss	21	1	101144 washer lock 1/4
11	1	407271 shim hyd motor mt AGCO 9250			

## 6.4. LEFT END MOUNT 972 MACDON 15, 21, 25, 30 , 36 FT

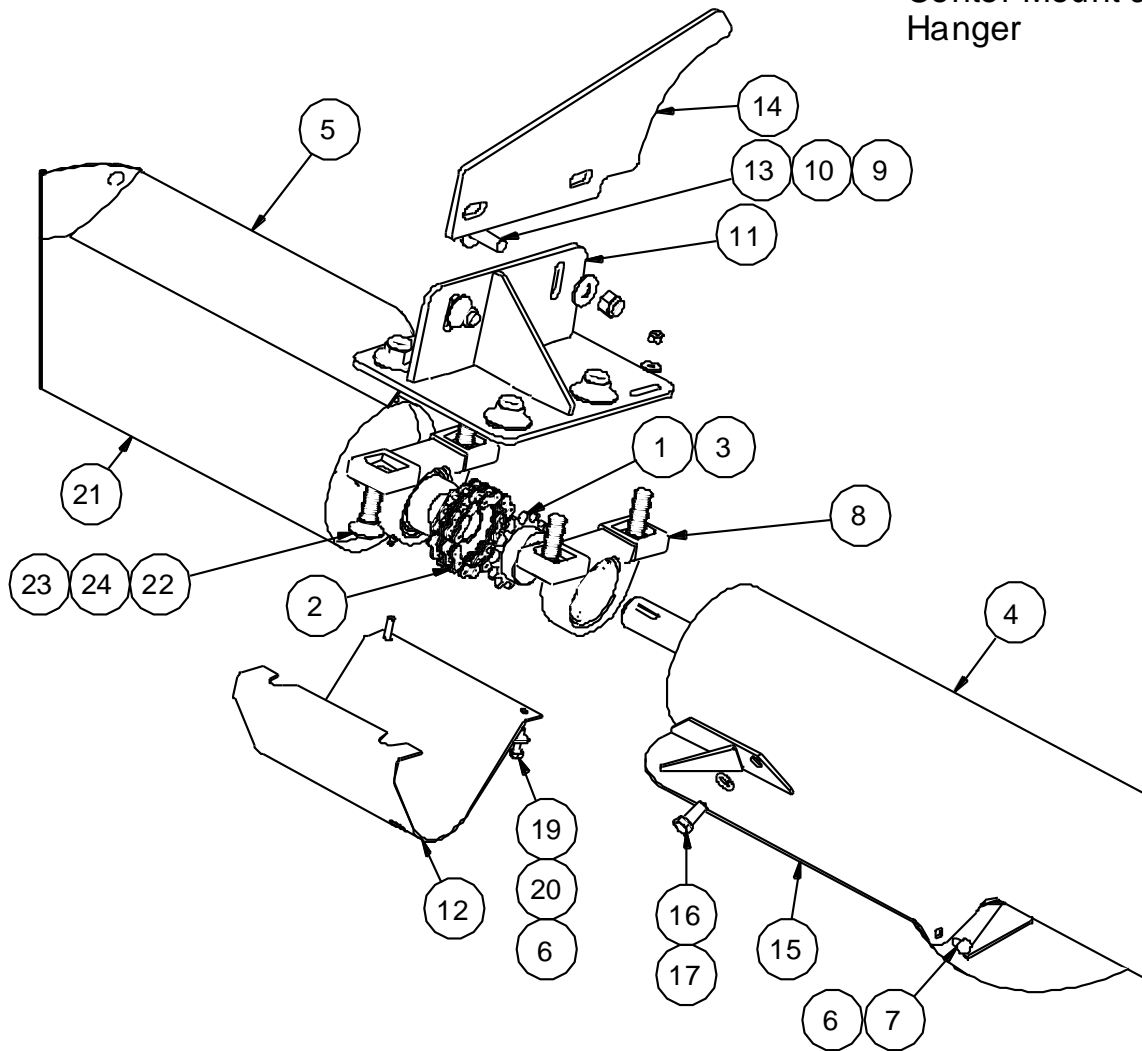
Left Hand End Mount



ITEM	QTY	PART NUMBER	ITEM	QTY	PART NUMBER
1	10	100602 bolt 3-8 X 1 gr5 pltd nc	6	1	408230 MacDon 25ft Auger Wldmt LH 6in LH
2	16	101105 flat washer 3/8"	7	1	406389 MD973 36ft Bearing Support Plate LH
3	9	102123 nut nylok 3/8" nc gr5 pltd	8	6	102127 nut 5/8 nc nylock
4	3	114471 Pillow Block Bearing Assy P207-SA207	9	6	100965 carriage bolt 5/8" X 2-1/4" nc
5	2	100703 bolt 1-2 X 2 gr5 pltd nc	10	6	101107 washer flat 5/8"

## 6.5. PARTS MACDON 972 25 FT KIT # 405876 CENTER MOUNT WELD ON

Center Mount and Hanger

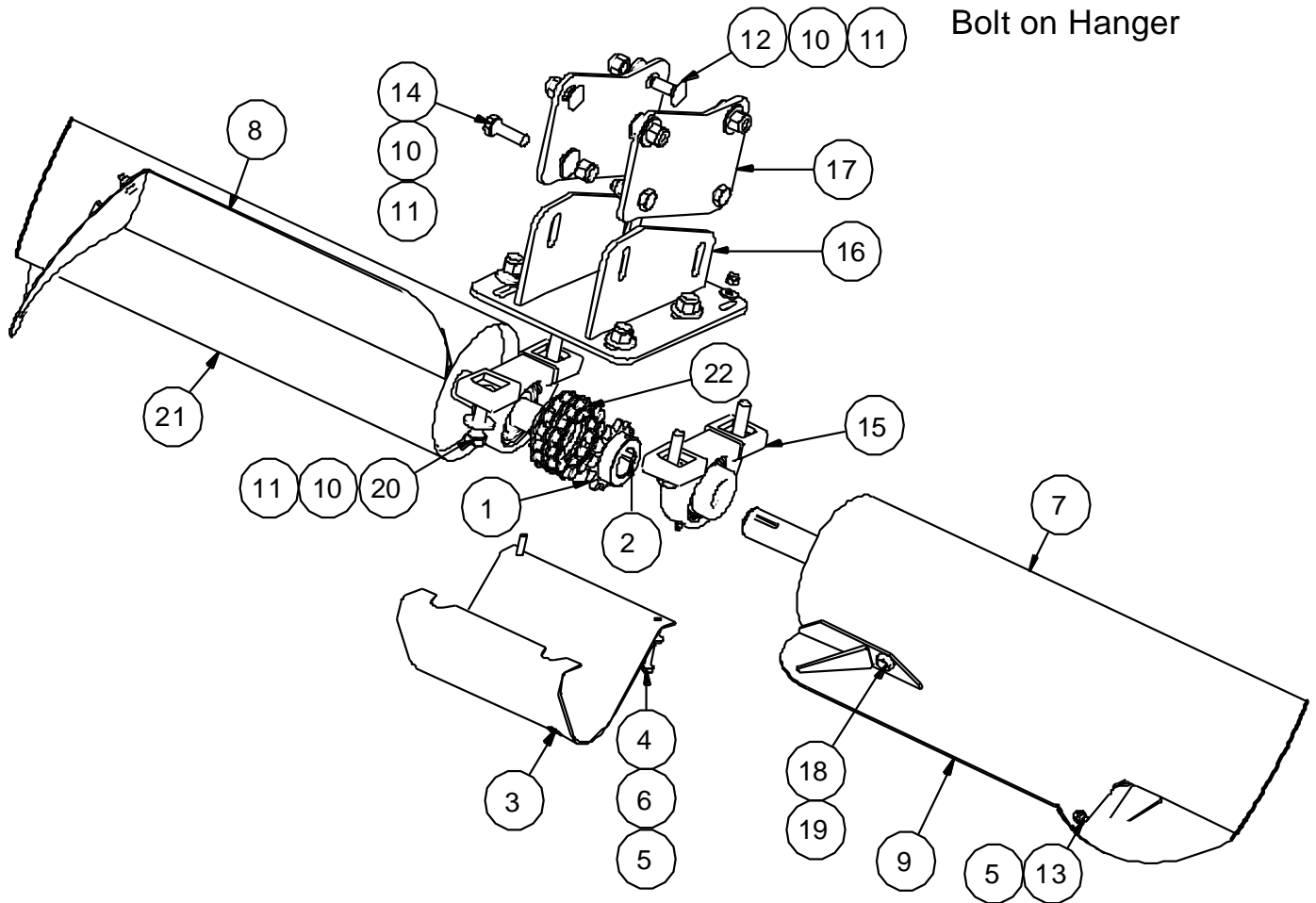


ITEM	QTY	PART NUMBER	ITEM	QTY	PART NUMBER
1	2	114468 chain coupler 1-1/4" ID	13	2	100702 bolt 1-2 X 1 1-2 gr5 pltd nc
2	1	114469 chain 50 2R for chain coupler	14	1	406293 center weld on hanger MacDon 972 25 ft
3	2	405361 key 1/4" x 1/4" x 1"	15	1	405726 flap bolt on wldt 3in LH
4	1	406290 MacDon 972 25 ft Auger Wldmt 6in LH	16	2	100660 bolt 7-16 X 1 gr5 pltd nc
5	1	405725 flap bolt on wldt 3in RH	17	2	101142 lock washer 7-16
6	6	102121 nut nylok 1/4" nc gr5 pltd	18	9	102123 nut nylok 3/8" nc gr5 pltd
7	2	100966 Carriage Bolt 1-4 X 3-4 NC	19	2	100403 bolt 1-4 X 1 gr5 pltd nc
8	3	114471 Pillow Block Bearing Assy P207-SA207	20	4	101103 flat washer 1/4"
9	4	102125 nut nylok 1/2" nc gr5 pltd	21	1	408230 972 MacDon Auger Wldmt 6in RH dirdrv
10	6	101106 flat washer 1/2"	22	6	100965 carriage bolt 5/8" X 2-1/4" nc
11	1	406139 D50 Center Bearing Mnt Wldmt	23	6	102127 nut 5/8 nc nylock
12	1	405087 plastic guard	24	6	101107 washer flat 5/8"



## 6.6. PARTS MACDON 972 30 FT KIT # 405877 CENTER MOUNT BOLT ON

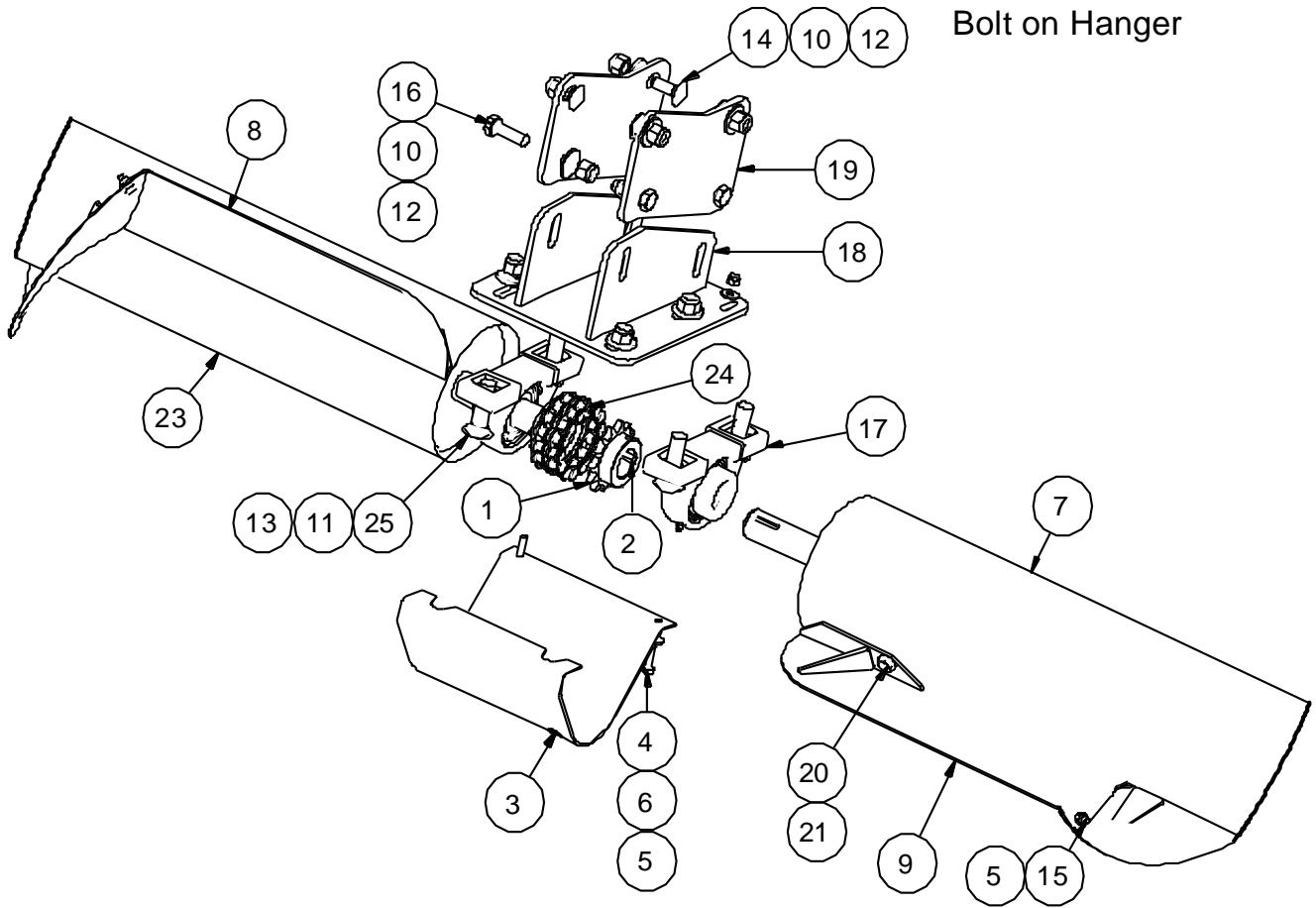
Center Mount and Bolt on Hanger



ITEM	QTY	PART NUMBER	ITEM	QTY	PART NUMBER
1	2	114468 chain coupler 1-1/4" ID	14	4	100702 bolt 1-2 X 1 1-2 gr5 pltd nc
2	2	405361 key 1/4" x 1/4" x 1"	15	2	114471 Pillow Block Bearing Assy P207-SA207
3	1	405087 plastic guard	16	1	406349 MD972 30ft Center Bearing Mnt Wldmt
4	2	100403 bolt 1-4 X 1 gr5 pltd nc	17	2	406348 MD972 30ft Center Mount Adapter Plate
5	4	102121 nut nylok 1/4" nc gr5 pltd	18	2	100660 bolt 7-16 X 1 gr5 pltd nc
6	4	101103 flat washer 1/4"	19	2	101142 lock washer 7-16
7	1	406336 MD972 30ft Auger Wldmt LH	20	8	100703 bolt 1-2 X 2 gr5 pltd nc
8	1	405725 flap bolt on wldt 3in RH	21	1	408233 MD972 30ft Auger Wldmt RH dirdrv
9	1	405726 flap bolt on wldt 3in LH	22	1	114469 Coupler chain 2R No50:1
10	22	101106 flat washer 1/2"			
11	16	102125 nut nylok 1/2" nc gr5 pltd			
12	4	100948 carriage bolt 1-2 X 1 1-4 NC			
13	2	100966 Carriage Bolt 1-4 X 3-4 NC			

## 6.7. PARTS MACDON 972 36 FT KIT # 405878 CENTER MOUNT BOLT ON

Center Mount and Bolt on Hanger

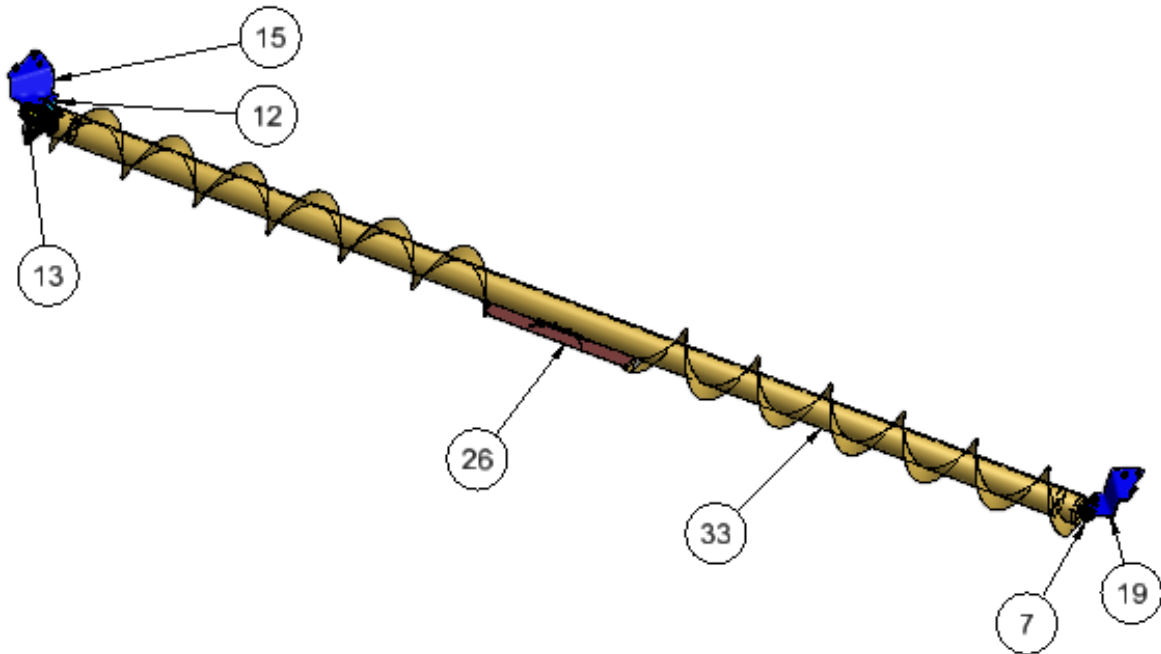


ITEM	QTY	PART NUMBER	ITEM	QTY	PART NUMBER
1	2	114468 chain coupler 1-1/4" ID	15	2	100966 Carriage Bolt 1-4 X 3-4 NC
2	2	405361 key 1/4" x 1/4" x 1"	16	4	100702 bolt 1-2 X 1 1-2 gr5 pltd nc
3	1	405087 plastic guard	17	2	114471 Pillow Block Bearing Assy P207-SA207
4	2	100403 bolt 1-4 X 1 gr5 pltd nc	18	1	406385 MD973 36ft Center Bearing Mnt Wldmt
5	4	102121 nut nylok 1/4" nc gr5 pltd	19	2	406348 MD972 30ft Center Mount Adapter Plate
6	4	101103 flat washer 1/4"	20	2	100660 bolt 7-16 X 1 gr5 pltd nc
7	1	406336 MD972 30ft Auger Wldmt LH	21	2	101142 lock washer 7-16
8	1	405725 flap bolt on wldt 3in RH	22	8	100703 bolt 1-2 X 2 gr5 pltd nc
9	1	405726 flap bolt on wldt 3in LH	23	1	408138 MD972 36ft Auger Wldmt RH dirdrv
10	14	101106 flat washer 1/2"	24	1	114469 Coupler chain 2R No50:1
11	4	101107 flat washer 58			
12	16	102125 nut nylok 1/2" nc gr5 pltd			
13	4	102127 nut 58 nc nylock			
14	4	100948 carriage bolt 1-2 X 1 1-4 NC			

## 6.8. PARTS MACDON 972 15-21 FOOT KIT 405874-405875

### Kit # 405874- 75- 15-21 ft MacDon 972

for most parts refer to 25-36 foot part pages-  
parts # 26-33 ft exclusive to smaller headers



1	2	102125 nut nylok 1/2" nc gr5 pltd	20	6	100603 bolt 3-8 X 1 1-4 gr5 pltd nc
2	2	101106 flat washer 1/2"	21	1	101144 washer lock 1/4
3	2	102121 nut nylok 1/4" nc gr5 pltd	22	1	100404 HEX HD BOLTS 1 4 NC X 1 1 4
4	2	100966 Carriage Bolt 1-4 X 3-4 NC			
5	16	101105 flat washer 3/8"	23	2	101107 washer flat 5/8"
6	9	102123 nut nylok 3/8" nc gr5 pltd	24	2	102127 nut 5/8 nc nylock
7	1	114471 Pillow Block Bearing Assy P207-SA207	25	2	100965 carriage bolt 5/8" X 2-1/4" nc
8	2	100703 bolt 1-2 X 2 gr5 pltd nc	26	1	408046 flap bolt on wldt 3in single auger
9	2	100660 bolt 7-16 X 1 gr5 pltd nc	27	4	100602 bolt 3-8 X 1 gr5 pltd nc
10	2	101142 lock washer 7-16	28	4	101145 lock washer 3/8"
11	1	407105 direct drive motor adapter wldt	29	1	118833 hose 08 82 08FJIC x 90 deg 10MORB
12	1	408111 hyd motor mt macdon dirdrv			
13	1	117170 motor with flow control 5.9 danfoss	30	1	118832 hyd hose 08 34in x 08JICF90 X 08MJIC - LU
14	1	407271 shim hyd motor mt AGCO 9250	31	1	117984 ADAPTER STR 10MORB X 08 MJIC
15	1	408137 MacDon 972 mtr mt plate RH dirdrv	32	1	405875 Macdon Harvest Header 960 - 21ft
16	1	100610 bolt 3-8 X 3 gr5 pltd nc	33	1	408049 MacDon auger wldt 960 21 ft dirdrv
17	1	102131 nut jam 3-8 nc gr5 1-2 HGT			
18	2	100604 bolt 3-8 X 1 1-2 gr5 pltd nc	33	1	408042 MacDon auger wldt 15ft dirdrv
19	1	406389 MD973 36ft Bearing Support Plate LH			

## 6.9. STRIPPER BAR INSTALLATION

- 1) All Ag Shield augers now come with a stripper bar to help prevent crop from wrapping on the auger, as well as to provide a cleaner transfer of crop to the center of the header.
- 2) Put the stripper bar on last after the auger has been installed and tested. This will ensure the height of the auger does not change after the stripper bar height has been set.



- 3) Hold stripper bar up to the back board and mark the holes in the middle of the slot (every second hole will be fine)
- 4) A magnet will help hold one end if installing alone.
- 5) Make sure before drilling that the drill will not damage anything behind the back board (hyd fittings hoses etc)
- 6) Drill 3/8" holes in the middle of the slot in the back board.
- 7) Set the stripper bar to be 1/4" below the flighting.
- 8) Tighten the stripper bar to the back board.

## 7. WARRANTY

1. Ag Shield Manufacturing warrants each new Ag Shield cross auger to be free from factory defects in material and workmanship under normal use and service, when set up and operated in accordance with factory instructions for one year from the date of delivery to the original purchaser.
2. Ag Shield's obligation under this warranty is limited to the supplying of replacement parts which are defective due to factory workmanship or material.
3. Your Ag Shield Dealer is responsible for providing warranty labour. Credit for required labour is specifically agreed to on an individual case basis.
4. The warranty is void on any unit which has been tampered with, or modified in any way not authorized in writing by the factory.
5. This warranty is void on any unit which is subject to misuse, negligence or accident, or which has had the serial number tampered or removed.
6. A "Warranty Claim Form" (sample at end of handbook) must be submitted to Ag Shield with returned parts in order for parts to be considered for warranty examination.
7. A warranty registration page from the front of this manual must be returned to the factory in order to qualify for warranty examination.
8. All returned parts must be sent to the factory freight prepaid, and warranty parts will be returned to you freight collect.
9. Replacement parts shipped pending receipt of parts for examination will be invoiced, and remain on your account until such time as examination indicates that a credit for those parts be issued or that payment is due.
10. Parts not returned for warranty examination within 30 days must be paid for at that time. Ag Shield will immediately reimburse any cash paid for items that are later determined defective.
11. Warranty terms and conditions are subject to provincial and state legislation.



WARRANTY CLAIM FORM

**Ag Shield Mfg**  
 Box 9, Benito,  
 MB, R0L 0C0  
 ph 800-561-0132  
 fax 204-539-2130  
 ph 204-539-2000i

Dealer		
Address		
City	State/Province	Zip/Postal

End User		
Address		
City	State/Province	

DATE OF SALE	DATE FAILED	REPAIR DATE	ACRES/HOURS	MODEL	SERIAL NUMBER
--------------	-------------	-------------	-------------	-------	---------------

LABOUR HOURS	LABOUR RATE	LABOUR AMOUNT	PARTS MUST BE RETURNED TO BENITO MB FREIGHT PREPAID TO BE CONSIDERED FOR WARRANTY. DATE SHIPPED		
--------------	-------------	---------------	---	--	--

QUANTITY ITEM	PART NUMBER	DESCRIPTION	PRICE EACH	TOTAL PRICE	DESCRIBE THE CAUSE OF FAILURE AND CORRECTIVE ACTION TAKEN	APPROVE /REJECT
1						
2						
3						
4						
5						
6						
7						
8						

I CERTIFY THAT THE INFORMATION IS ACCURATE AND THAT THE PARTS WERE REPLACED ON THE MACHINE	PARTS	DATE PARTS RECD	RECD BY
	LABOUR	ITEMS TO SUPPLIERS	
	TOTAL		

SHADED AREAS AG SHIELD USE ONLY ---PLEASE ADD DETAILS FOR ITEM NUMBERS ON BACK

