

# AG SHIELD



## **12" Cross Auger for JD630D (ASM Part# 405846) & JD635D (ASM Part# 405847) & JD640D (# 405848) Headers OPERATOR'S HANDBOOK AND PARTS MANUAL**

Ag Shield Manufacturing  
Box 9, Benito, Manitoba R0L 0C0  
Phone: 800-561-0132 or 204-539-2000  
Fax: 204-539-2130  
Email address: [sales@agshield.com](mailto:sales@agshield.com)  
Web site: <http://www.agshield.com>

Printed in Canada

- 08/26/15

REV 3

-Part No 405903

# 1 TABLE OF CONTENTS

1	TABLE OF CONTENTS .....	2
1	INTRODUCTION AND SIGN-OFF FORM .....	4
2	SAFETY .....	5
2.1	SAFETY OVERVIEW .....	6
3.2	GENERAL SAFETY .....	6
2.2	MAINTENANCE SAFETY .....	7
2.3	HYDRAULIC SAFETY .....	7
2.4	SHEAR SAFETY .....	7
2.5	STORAGE SAFETY .....	7
2.2	TRANSPORT SAFETY .....	7
2.6	REFUELING SAFETY .....	8
2.7	TIRE SAFETY .....	8
2.8	OPERATING SAFETY .....	8
2.9	CROSS AUGER SAFETY .....	8
2.10	SAFETY DECALS .....	9
3	SETUP FROM SHIPPING MODE .....	10
3.1	JD 640D 40 FOOT ONLY PARTS .....	18
3.2	TEMPLATE FOR DRILLING HOLES IN CENTER MOUNT .....	21
3.3	BEARING AND SPROCKET FOR CENTER .....	22
3.4	AUGER CLEARANCE TO BACK BOARD .....	23
3.5	HYDRAULIC MOTOR SET UP .....	24
3.6	STRIPPER BAR INSTALLATION .....	25
4	OPERATIONS .....	26
4.1	FIELD SETTING THE CROSS AUGER .....	26
5	PARTS .....	27
5.1	405846 JD630 & 405847 JD635 AUGER PARTS OVERVIEW .....	27
5.2	405848 JD640 AUGER PARTS OVERVIEW .....	28
5.3	405846-847 JD630-635 SERIES RIGHT END DIRECT DRIVE .....	29
5.4	405848 JD640 SERIES RIGHT END DIRECT DRIVE .....	30
5.5	LEFT END MOUNT-JD 630-635 .....	31
5.6	LEFT END MOUNT-JD 640 .....	32
5.7	CENTER MOUNT FOR MODEL 635-630D .....	33
5.8	CENTER MOUNT FOR MODEL 640D .....	34
6	WARRANTY .....	35



# 1 INTRODUCTION AND SIGN-OFF FORM

**Congratulations!** on your choice of an Ag Shield cross auger. This equipment has been designed and manufactured to meet the harvesting needs of the discerning farmers and custom harvesters.

**OPERATOR ORIENTATION** - The directions left, right, front and rear, as mentioned throughout this manual, are as seen from the tractor driver's seat and facing in the normal direction of travel.

Ag Shield follows the general safety standards specified by the American Society of Agricultural Engineers (ASAE) and the Occupational Safety and Health Administration (OSHA). Anyone who will be operating and/or maintaining the Ag Shield Yield Shield must read and clearly understand ALL Safety, Operating, and Maintenance information presented in this manual.

Do not operate or allow anyone else to operate this equipment until such information has been reviewed. Review this information annually before season start-up. Make these reviews of safety and operation a standard practice for all of your equipment. An untrained operator is **not qualified** to operate this machine.

A sign off sheet is provided for your record keeping to show that all personnel who will be working with the equipment have read and understood the information in the Operators Handbook and have been instructed in the operation of the equipment.

## SIGN-OFF FORM

DATE	OPERATORS SIGNATURE	EMPLOYERS SIGNATURE

## 2 SAFETY

### SAFETY ALERT SYMBOL

This Safety Alert symbol means:  
**ATTENTION! BECOME ALERT!**  
**YOUR SAFETY IS INVOLVED!**

The Safety Alert symbol identifies important safety messages on the Ag Shield Yield Shield and in the manual. When you see this symbol, be alert to the possibility of personal injury or death. Follow the instructions in the safety message.



### 3 Big Reasons

**Accidents Disable and Kill**  
**Accidents Cost**  
**Accidents Can Be Avoided**

#### SIGNAL WORDS:

Note the use of the signal words **DANGER**, **WARNING** and **CAUTION** with the safety messages. The appropriate signal word for each message has been selected using the following guide-lines:

- DANGER** - An immediate and specific hazard which **WILL** result in severe personal injury or death if the proper precautions are not taken.
- WARNING** - A specific hazard or unsafe practice which **COULD** result in severe personal injury or death if proper precautions are not taken.
- CAUTION** - Unsafe practices which **COULD** result in personal injury if proper practices are not taken, or as a reminder of good safety practices.


## 2.1 SAFETY OVERVIEW

**YOU** are responsible for the **SAFE** operation and maintenance of your Ag Shield cross auger. **YOU** must ensure that you and anyone else who is going to operate, maintain or work around the cross auger be familiar with the operating and maintenance procedures and related **SAFETY** information contained in this manual. This manual will take you step-by-step through your working day and alerts you to all good safety practices that should be adhered to while operating the cross auger.

Remember, **YOU** are the key to safety. Good safety practices not only protect you but also the people around you. Make these practices a working part of your safety program. Be certain that **EVERYONE** operating this equipment is familiar with the recommended operating and maintenance procedures and follows all the safety precautions. Most accidents can be prevented. Do not risk injury or death by ignoring good safety practices.

- Cross auger owners must give operating instructions to operators or employees before allowing them to operate the cross auger, and at least annually thereafter per OSHA regulation 1928.57.
- The most important safety device on this equipment is a **SAFE** operator. It is the operator's responsibility to read and understand **ALL** Safety and Operating instructions in the manual and to follow these. All accidents can be avoided.
- A person who has not read and understood all operating and safety instructions is not qualified to operate the machine. An untrained operator exposes himself and bystanders to possible serious injury or death.
- Do not modify the equipment in any way. Unauthorized modification may impair the function and/or safety and could affect the life of the equipment.
- Think **SAFETY!** Work **SAFELY!**

## 3.2 GENERAL SAFETY

1. Read and understand the Operator's Manual and all safety signs before operating, maintaining, adjusting the Yield Shield. 

2. Only trained competent persons shall operate the reconditioner. An untrained operator is not qualified to operate the machine.

3. Have a first-aid kit available for use should the need arise and know how to use it.



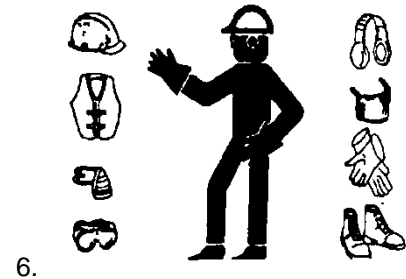
4. Have a fire extinguisher available for use should the need arise and know how to use it.



5. Do not allow riders.

6. Wear appropriate protective gear. This list includes but is not limited to:

- A hard hat
- Protective shoes with slip resistant soles
- Protective glasses or goggles
- Heavy gloves
- Hearing protection



7. Stop the engine, place all controls in neutral, set park brake, remove ignition key and wait for all moving parts to stop before servicing, adjusting, repairing or unplugging.
8. Review safety related items with all personnel annually.

## 2.2 MAINTENANCE SAFETY

1. Review the Operators Manual and all safety items before working with, maintaining or operating the Yield Shield.
2. Stop the tractor engine, place all controls in neutral, set park brake, remove ignition key, wait for all moving pads to stop before servicing, adjusting, or repairing.
3. Before applying pressure to a hydraulic system, make sure all components are tight and that steel lines, hoses and couplings are not damaged.
4. Relieve pressure from hydraulic circuit before servicing or disconnecting from tractor.
5. Keep hands, feet, clothing and hair away from all moving and/or rotating parts.
6. Clear the area of bystanders, especially children, when carrying out any maintenance and repairs or making any adjustments.
7. Place stands or blocks under the frame before working beneath the machine.

## 2.3 HYDRAULIC SAFETY

1. Always place all tractor hydraulic controls in neutral before dismounting.
2. Make sure that all components in the hydraulic system are kept in good condition and are clean.
3. Replace any worn, cut, abraded, flattened or crimped hoses and steel lines.
4. Do not attempt any makeshift repairs to the hydraulic lines, fittings or hoses by using tape, clamps or cements. The hydraulic system operates under extremely high-pressure. Such repairs will fail suddenly and create a hazardous and unsafe condition.
5. Wear proper hand and eye protection when searching for a high-pressure hydraulic leak. Use a piece of wood or cardboard as a backstop instead of hands to isolate and identify a leak.
6. If injured by a concentrated high-pressure stream of hydraulic fluid, seek medical attention immediately. Serious infection or toxic reaction can develop from hydraulic fluid piercing the skin surface.

7. Before applying pressure to hydraulic system make sure that all connections are tight and that all hoses and fittings are in good condition.

## 2.4 SHEAR SAFETY

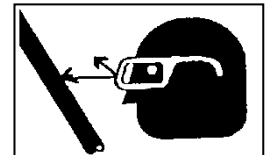
The operator must obey all safety labels.

1. Keep operators and bystanders away from all moving parts.
2. Shut off tractor engine and remove key before coming close to the implement or doing any maintenance
3. Never service or unplug shears while they are running, a single slip and you could be badly hurt or killed.

## 2.5 STORAGE SAFETY

1. Store unit in an area away from human activity.
2. Do not permit children to play on or around the stored Yield Shield.

## 2.2 TRANSPORT SAFETY



1. Read and understand ALL the information in the Operator's Manual regarding procedures and SAFETY when operating the Yield Shield in the field and/or on the road.
2. Check with local authorities regarding machinery transport on public roads. Obey all applicable laws and regulations.
3. Always travel at a safe speed. Use caution when making corners or meeting traffic.
4. Make sure the SMV (Slow Moving Vehicle) emblem and all the lights and reflectors that are required by the local highway and transport authorities are in place, are clean and can be seen clearly by all overtaking and oncoming traffic. Daybreak and dusk are particularly dangerous and pilot vehicles are recommended.

5. Ensure that the trailer is hitched positively to the towing vehicle. Always use a safety chain between the trailer and the tractor.
6. Keep to the right and yield the right-of-way to allow faster traffic to pass. Drive on the road shoulder, if permitted by law.
7. Always use hazard warning flashers on the Yield Shield when transporting unless prohibited by law.

## 2.6 REFUELING SAFETY

1. Handle fuel with care. It is highly flammable.



2. Do not refuel the machine while smoking or when near open flame or sparks.

3. Stop engine before refueling. Clean up spilled fuel before restarting engine.

## 2.7 TIRE SAFETY

1. Failure to follow proper procedures when mounting a tire on a wheel or rim can produce an explosion, which may result in serious injury or death.
2. Do not attempt to mount a tire unless you have the proper equipment and experience to do the job.
3. Have a qualified tire dealer or repair service perform required tire maintenance.
4. Operate the tires at the pressures, loads, and speeds suggested by the manufacturer.

## 2.8 OPERATING SAFETY

1. Read and understand the Operator's Manual and all safety signs before using.
2. Stop engine place all controls in neutral, set park brake, remove ignition key, wait for all moving parts to stop before servicing, adjusting, repairing or unplugging.
3. Before conditioning a field, be familiar with all potential hazards: trees, rocks, ditches, gullies, etc. Plan your route to avoid hazards. Keep Yield Shield width in mind when maneuvering to avoid obstacles.

4. Keep hands, feet, hair and clothing away from all moving and/or rotating parts.
5. Keep all shields and guards in place when operating.
6. Do not allow riders on the Yield Shield or tractor during operation or transporting.
7. Clear the area of all bystanders, especially children, before starting.
8. Stay away from machine when folding deflectors. Keep others away.
9. Before applying pressure to the hydraulic system, make sure all components are tight and that steel lines, hoses and couplings are not damaged.
10. Review safety instructions annually

## 2.9 CROSS AUGER SAFETY

The cross auger has sufficient power to sever limbs and cause serious to fatal injury. Always stop the cross auger before dismounting. Always be certain that no one is in front of combine header Shield before engaging the auger drive.

When greasing the auger, do so with the combine motor shut off and the park brake securely set.

Never attempt to help the crop move along the canvases with a wrench or other item that might get into the auger and draw the wrench holder into the auger.



## 2.10 SAFETY DECALS

Become familiar with these decals and the hazards they are marking.



part #113522



### 3 Setup from Shipping Mode

Figure 1 Installed and running.....	11
Figure 2 Mustardshown being pulled into the center of header .....	12
Figure 3 Installed 30-35-40 FT CROSS Auger .....	13
Figure 4 RH end front view of direct drive motor and auger mount .....	14
Figure 5 Center mount – 30 & 35 foot unit (NOT 640D) .....	15
Figure 6 LH end Mount – All models.....	16
Figure 7 center mount 640D only.....	18
Figure 8 RIGHT SIDE OF JD 640D REEL CYLINDER MOUNT .....	19
Figure 9 Sauer Motor speed control .....	26

#### Installation sequence for **JD 635**

1. Locate the right hand auger mount. Clamp into the position approximately 8" from the end.
2. Locate the center auger mount bolt onto center of header with 4 bolts supplied
3. Locate the left hand auger mount, clamp into position,
4. Locate the right hand auger (part number 405701), on 35 foot models, the tubing cut length is 189.5 inches. When turned down ward on the front, crop will be moved toward the center of the combine.
5. Put bearing, and sprocket onto the end of the right hand cross auger that will be in the center of the header, Install the direct drive end as shown in the parts section.
6. Lift right auger into place with a loader, and bolt loosely into place.
7. Rotate the auger, adjust so that there is less than ¼" clearance between the auger flighting and the rear plate of header. The rear plate of the header acts as the stripper to prevent crop from wrapping on the auger.
8. Install left hand auger bearing and mounts
9. Hang up the left hand auger, align, Rotate the auger, check that there is clearance between the auger flighting and the rear plate of header. Slide the bearings along the slots to have ¼" clearance.
10. Join the 2 augers with the chain coupler.
11. Install the center black plastic cover.
12. **Install hydraulic hoses** below to tie into canvas hydraulic circuit. The pressure line from the canvas motor port is installed to the forward port of the motor. The oil will take the long way around the mount, and exit into the short return hose that connects to the former canvas motor return hose.
13. Test direction of rotation to be down on the front of the auger, and set speed of the canvas, and use the flow control supplied to set the auger speed to be 5% or slightly greater than the canvases.

See Section 5 PARTS for more detailed parts breakdown.



FIGURE 1 INSTALLED AND RUNNING



FIGURE 2 MUSTARD SHOWN BEING PULLED INTO THE CENTER OF HEADER

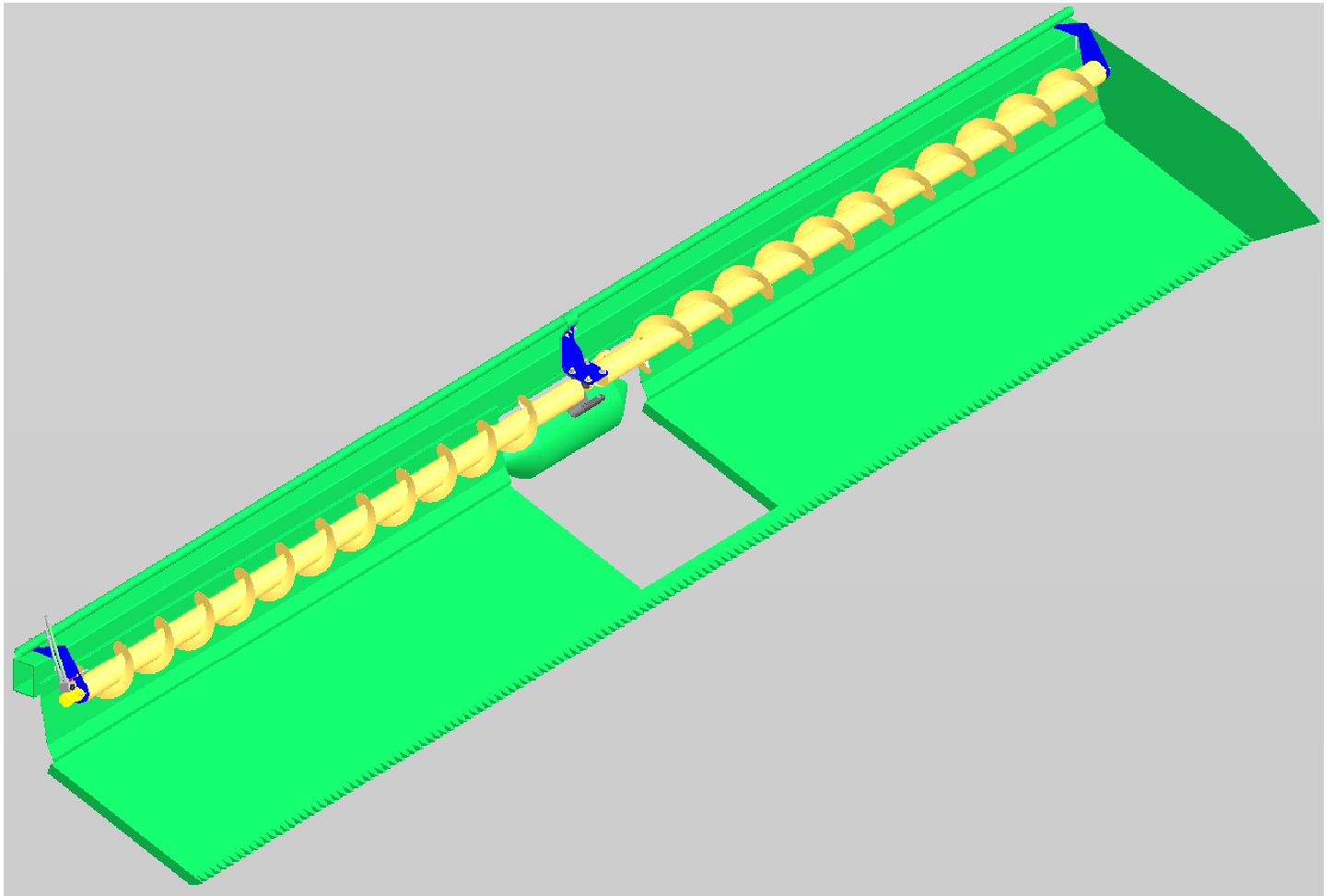


FIGURE 3 INSTALLED 30-35-40 FT CROSS AUGER

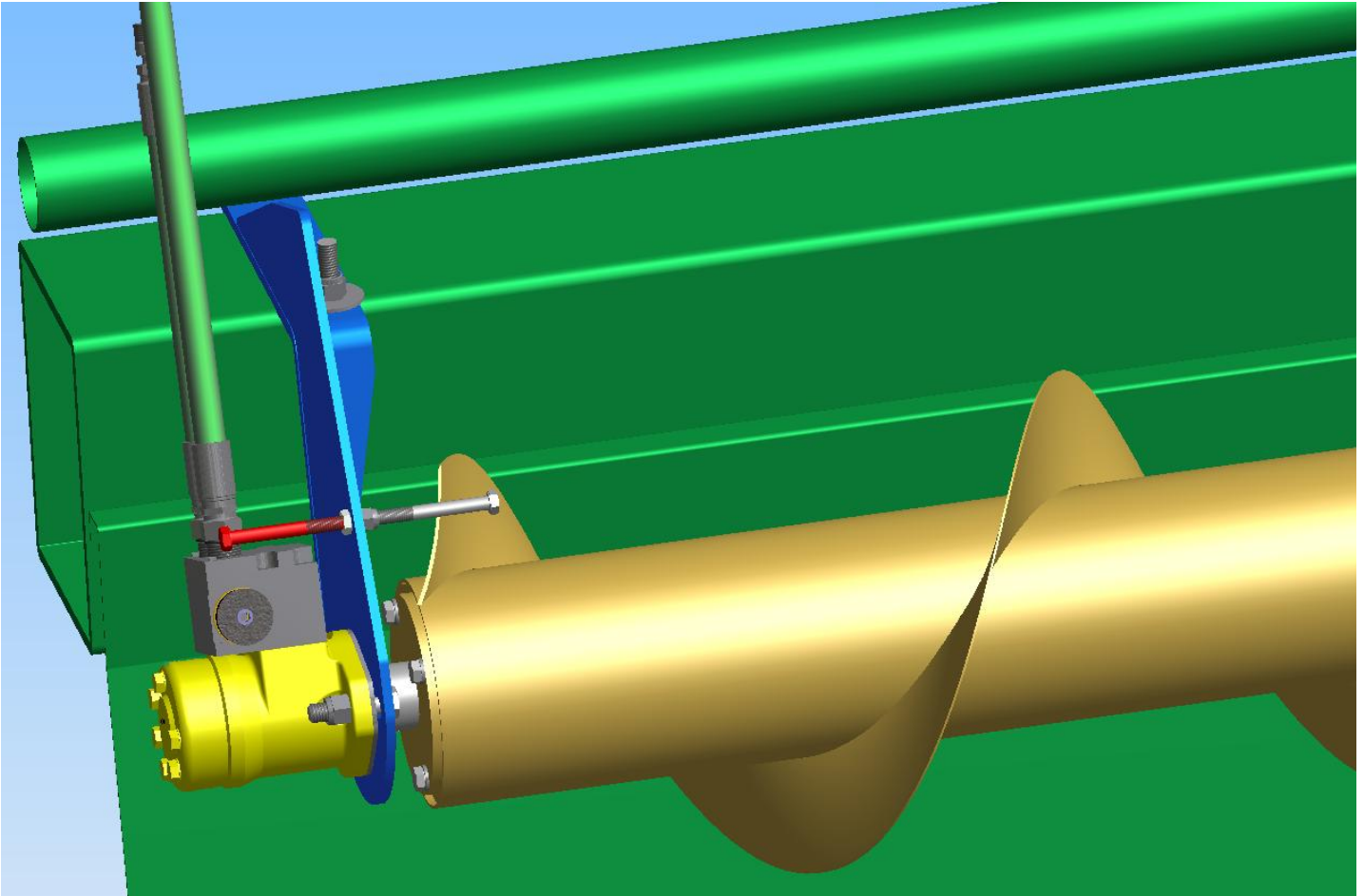


FIGURE 4 RH END FRONT VIEW OF DIRECT DRIVE MOTOR AND AUGER MOUNT

Note the **RED stop bolt** is used to completely stop the auger from turning IF you have a reason. The normal position is to have the **stop bolt** stored on the motor side of the blue mounting bracket as shown. This **stop bolt** may never be used by most operators, but is supplied in case there are special conditions where it might be required.

To use the **stop bolt**: Install the bolt into the path of the rotating auger as show, then completely open the bypass adjusting valve so that excessive back pressure is not built up in the canvas circuit.

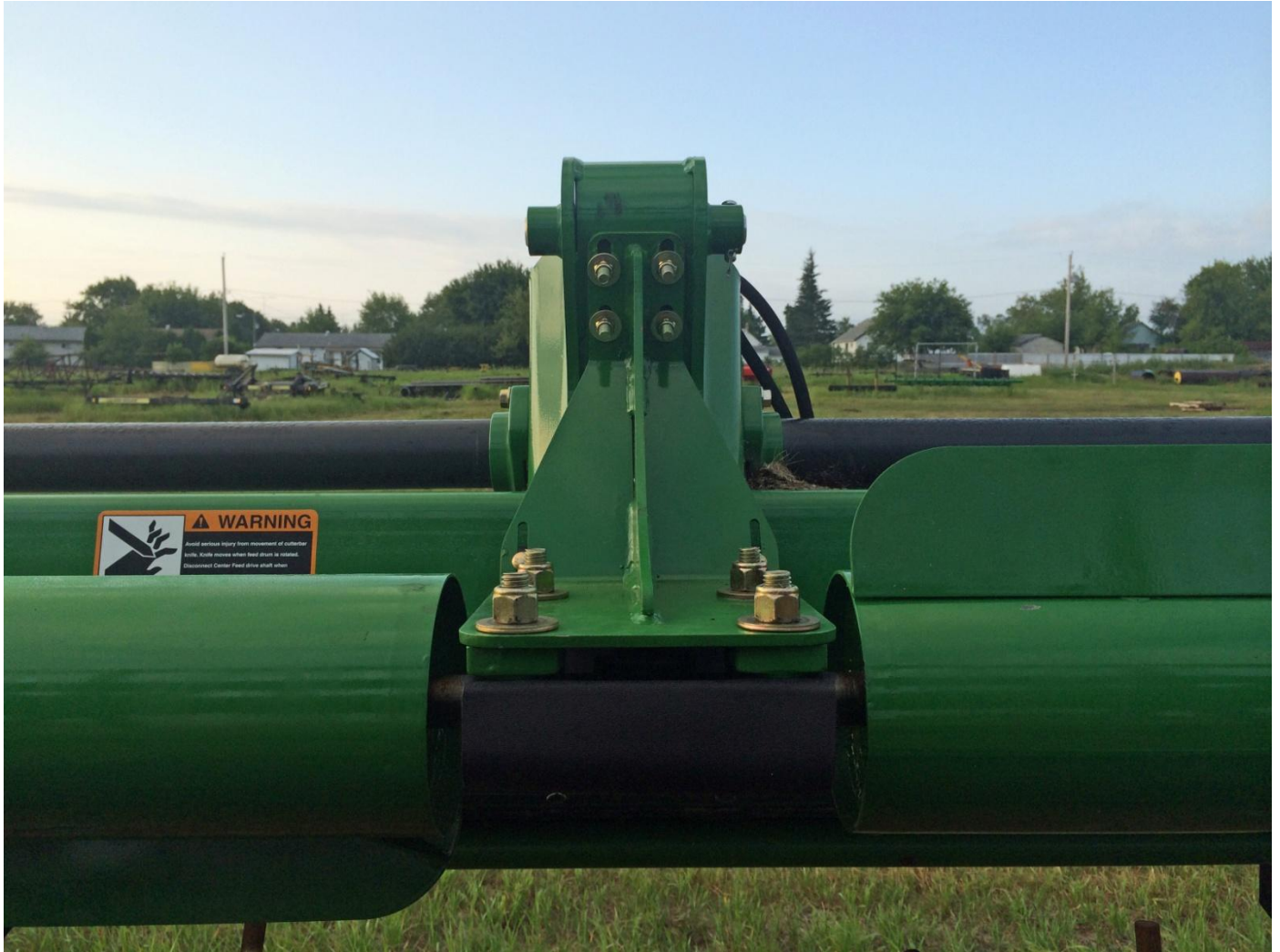


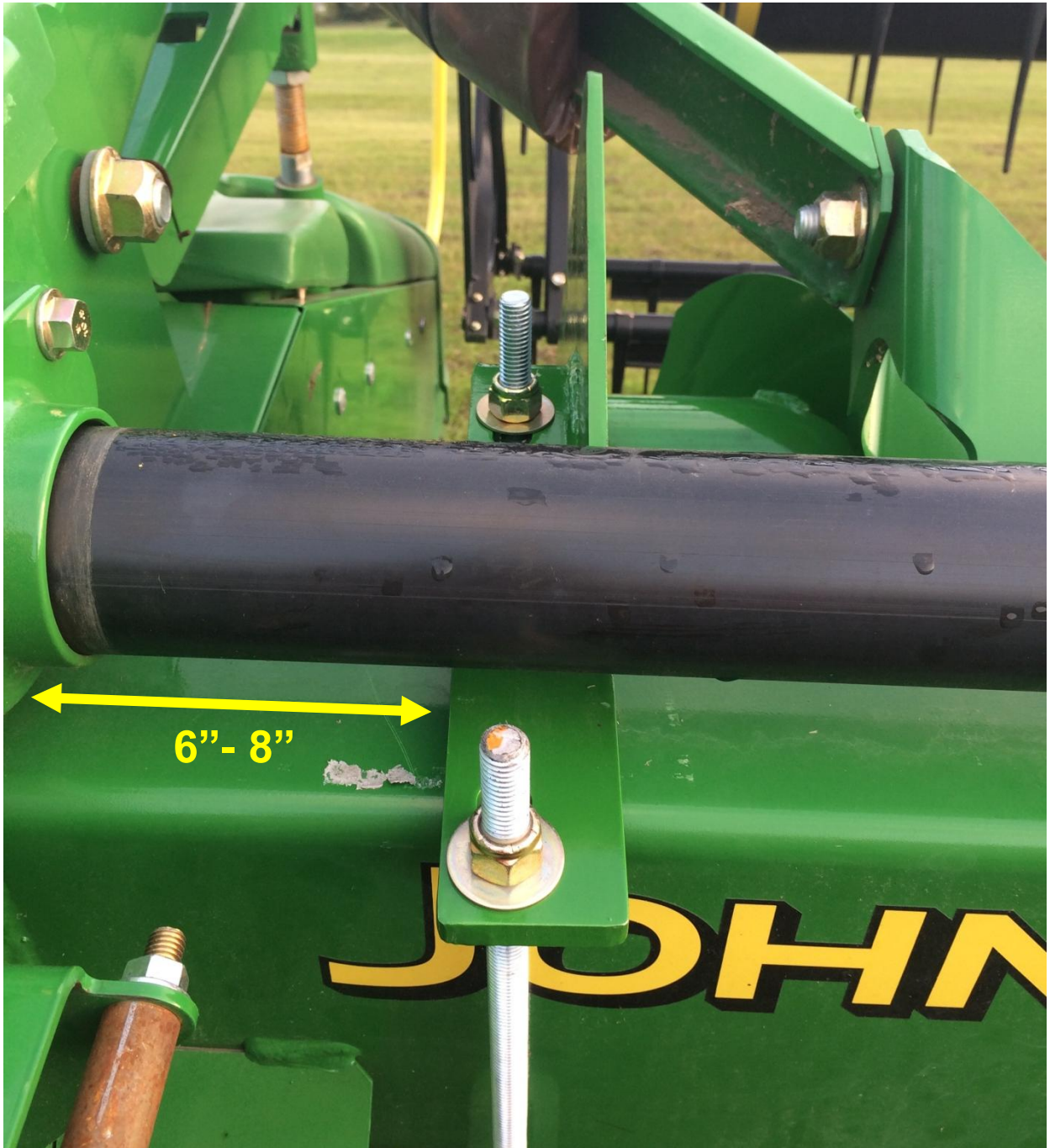
FIGURE 5 CENTER MOUNT – 30 & 35 FOOT UNIT (NOT 640D)

The center mount will need to be installed and pushed up as high as possible on the slots to be sure the Center Drum fingers will NOT contact the Ag Shield cross auger. If they do contact the auger, Re time the fingers to be just below the paddle.



FIGURE 6 LH END MOUNT – ALL MODELS





LH END MOUNT FROM BACK OF HEADER.

USE THE U BOLTS TO MOUNT THE BRACKET TO THE HEADER. APPROXIMATELY 8 INCHES IN FROM THE END. DO NOT FINAL TIGHTEN UNTIL AUGER IS IN PLACE.

### 3.1 JD 640D 40 FOOT ONLY PARTS

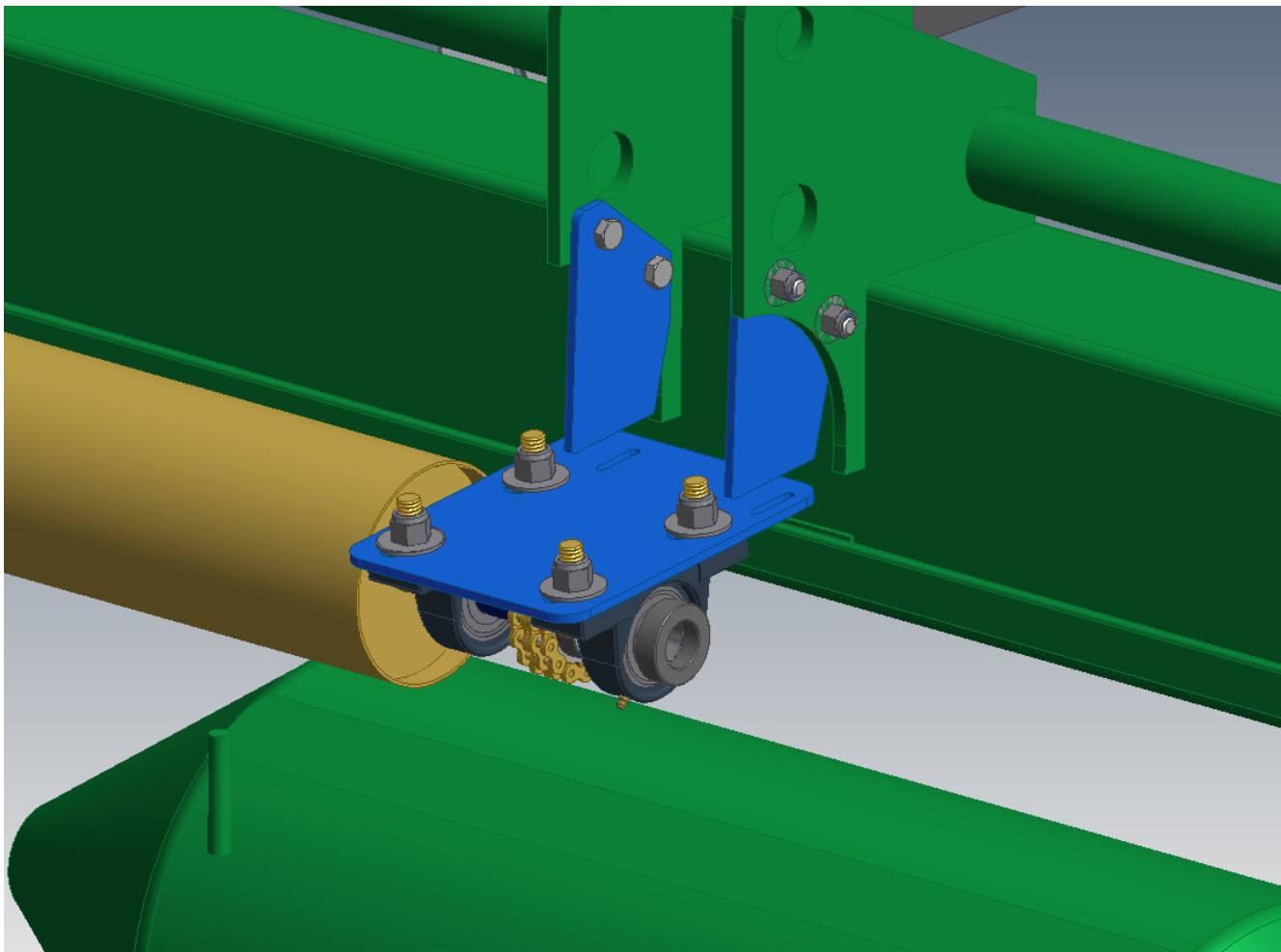


FIGURE 7 CENTER MOUNT 640D ONLY

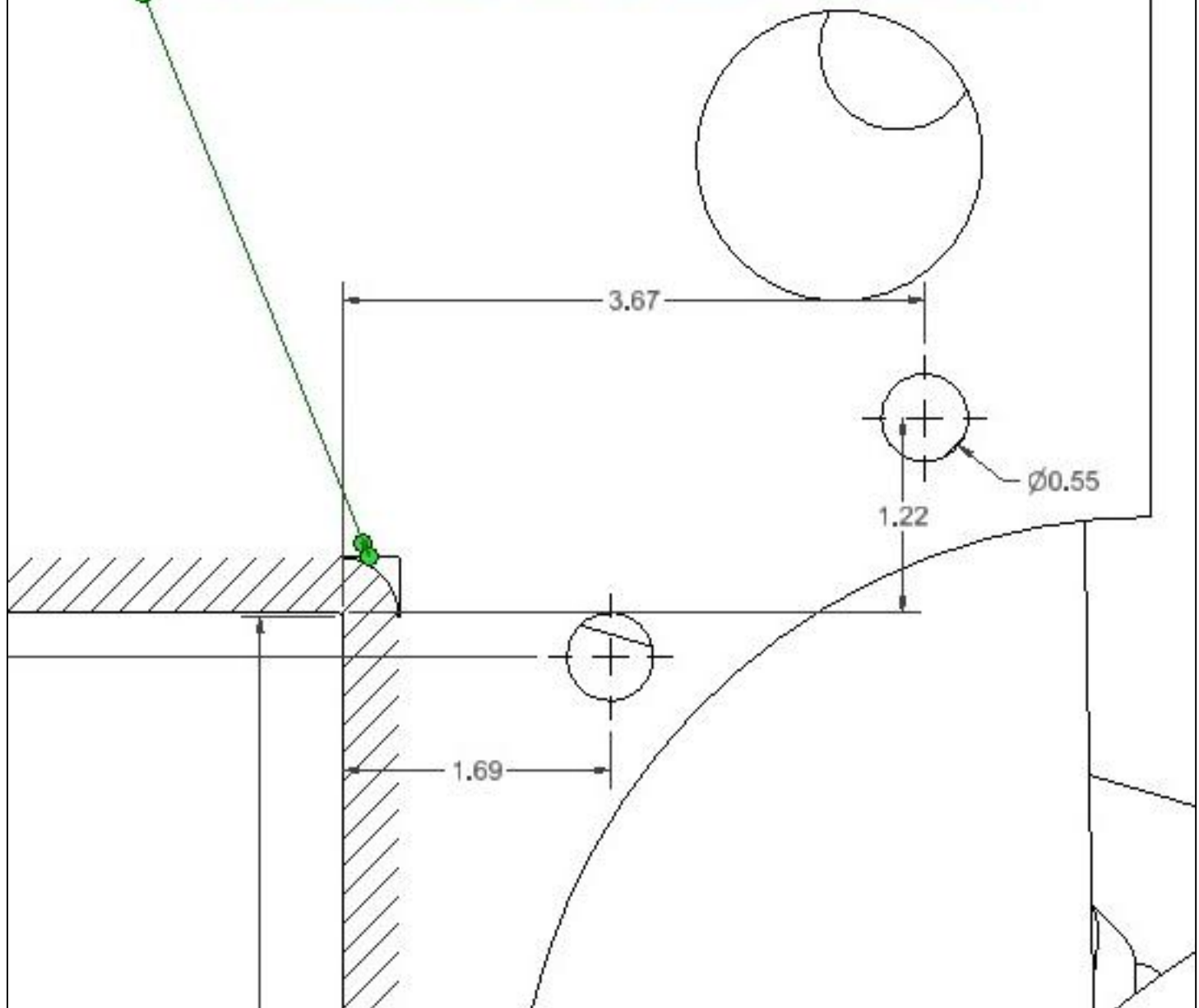
The next page is a photograph of the area where the holes need to be drilled for the center mount. On page 19 is a template that can be used as a means to mark the holes for drilling – or you may measure to place the holes or you may determine that the you prefer to weld the mount into position—In all events- make sure that the center is high enough that the finger on the feeder auger are lower than the paddles on the center of the header.



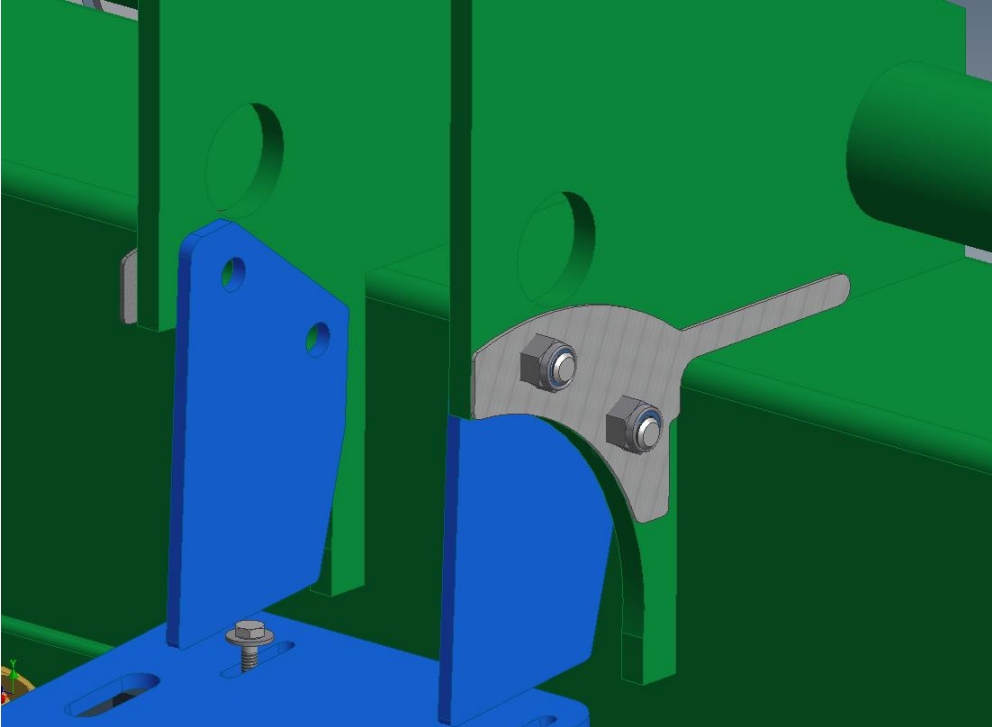
FIGURE 8 RIGHT SIDE OF JD 640D REEL CYLINDER MOUNT

This is a photo of where the template on the following page may be placed on the header to get the center mount bolted to the header. If desired – it may be installed with 4 weld beads 1” long about where the bolts are shown in the diagram and photo.

- View of the Right hand side of the reel lift plate at center of header. this is a 1-1 scale drawing - remove this page from the manual, cut out the lower left corner of page which is the header frame, place on the frame, center punch the holes at the X in holes
- drill with a  $\frac{1}{2}$ " drill bit that is provided dimensions are in inches ( take x 25.4 = mm) OR measure and center punch hole centers



### 3.2 TEMPLATE FOR DRILLING HOLES IN CENTER MOUNT

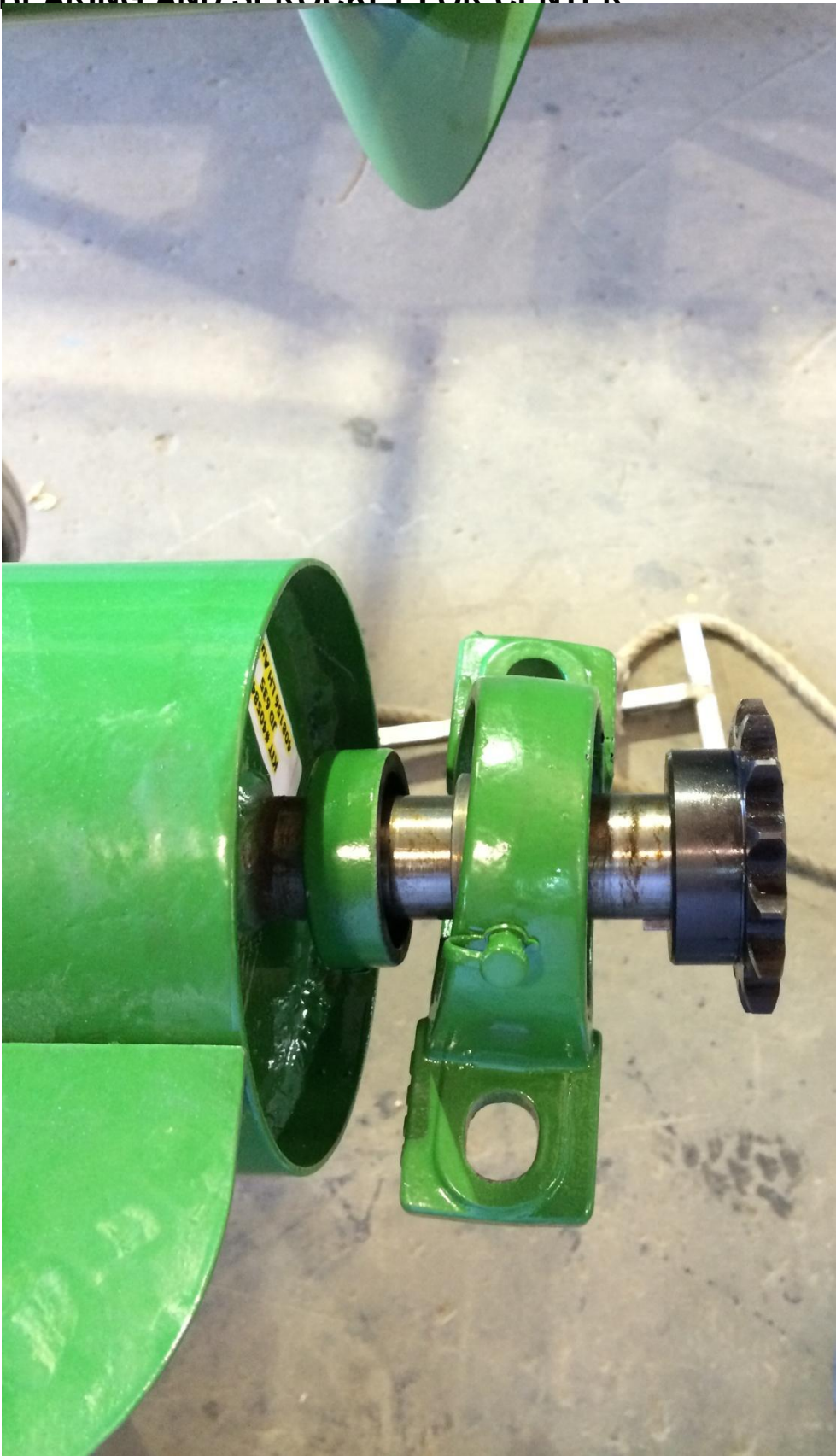


Use the Primer template to mark the holes for drilling.



Photo of drilled and bolted mount plate.

**3.3 BEARING AND SPROCKET FOR CENTER**



### 3.4 AUGER CLEARANCE TO BACK BOARD



It is recommended to have  $\frac{1}{4}$ " clearance from the back board to the Auger flighting. **Be sure that the auger is not in contact with the back board before turning the auger on for testing. Spin the auger by hand first.**

3.5 HYDRAULIC MOTOR SET UP





### 3.6 STRIPPER BAR INSTALLATION

- 1) All Ag Shield augers now come with a stripper bar to help prevent crop from wrapping on the auger, as well as to provide a cleaner transfer of crop to the center of the header.
- 2) Put the stripper bar on last after the auger has been installed and tested. This will ensure the height of the auger does not change after the stripper bar height has been set.



Hold stripper bar up to the back board and mark the holes in the middle of the slot (every second hole will be fine)

A magnet will help hold one end if installing alone.

Make sure before drilling that the drill will not damage anything behind the back board (hyd fittings hoses etc)

Drill 3/8" holes in the middle of the slot in the back board.

Set the stripper bar to be 1/4" below the flighting.

Tighten the stripper bar to the back board.

## 4 OPERATIONS



### DANGER

Stay clear of auger  
whenever it is running

### 4.1 FIELD SETTING THE CROSS AUGER

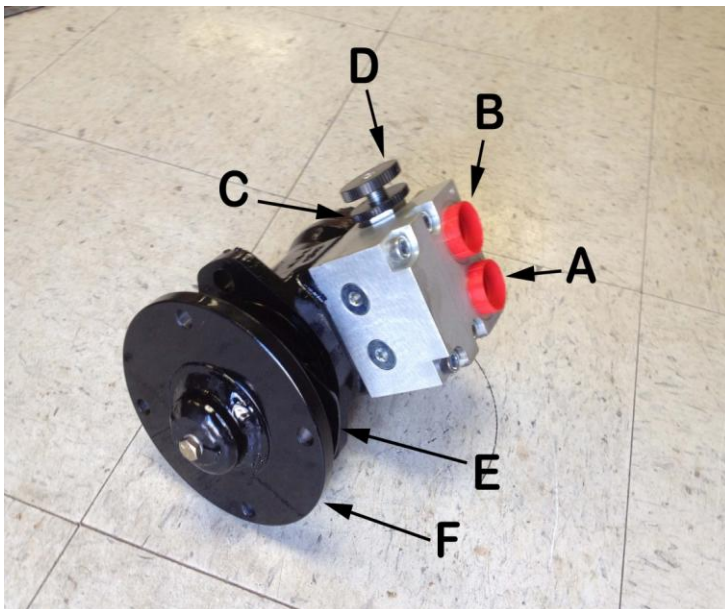


FIGURE 9 SAUER MOTOR SPEED CONTROL

Cross augers can only be adjusted for speed of rotation. In many conditions, the correct speed for many crops would be to have the flighting advancing the crop along the canvas 5% or slightly faster than the canvas speed. To increase auger speed, loosen lock wheel A counterclockwise, rotate adjust valve C clockwise, relock the valve by turning A clockwise. Closing this valve reduces the bypass of oil around the hydraulic motor. To slow down the rpm of the auger, rotate adjust valve C counterclockwise.

Observe the auger from the combine cab or swather operating platform. Focus your eye on one auger flighting and compare to a particular canvas slat. The auger can be adjusted to run at the same rate in feet per minute. As desired, slightly increase the cross auger to have it pulling ahead faster than the canvas.

In peas, augers can often be operated at a very slow speed--- 30% of canvas speed, and still feed as much crop into combine. When augers turn slower, there are fewer tendencies to wrap.

If wrapping occurs at the center of the header, try removing one or both of the bolts on paddles – In some conditions the paddles are an advantage, in some conditions the paddles are a disadvantage.

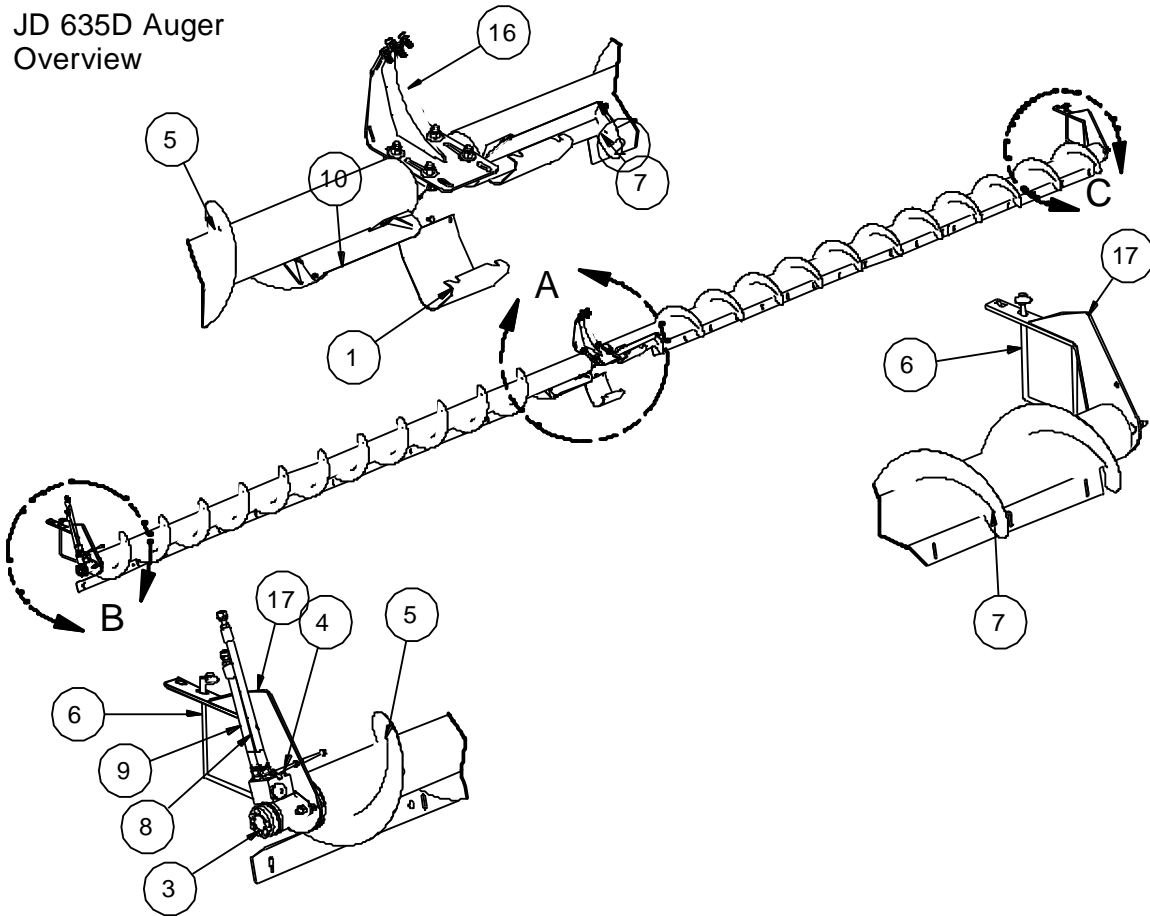
#### Terminology

- A:** Return or tank line
- B:** Pressure line
- C:** Lock wheel
- D:** Auger speed adjustment
- E:** Shim for hydraulic motor mount
- F:** Direct driver motor adapter

## 5 PARTS

### 5.1 405846 JD630 & 405847 JD635 AUGER PARTS OVERVIEW

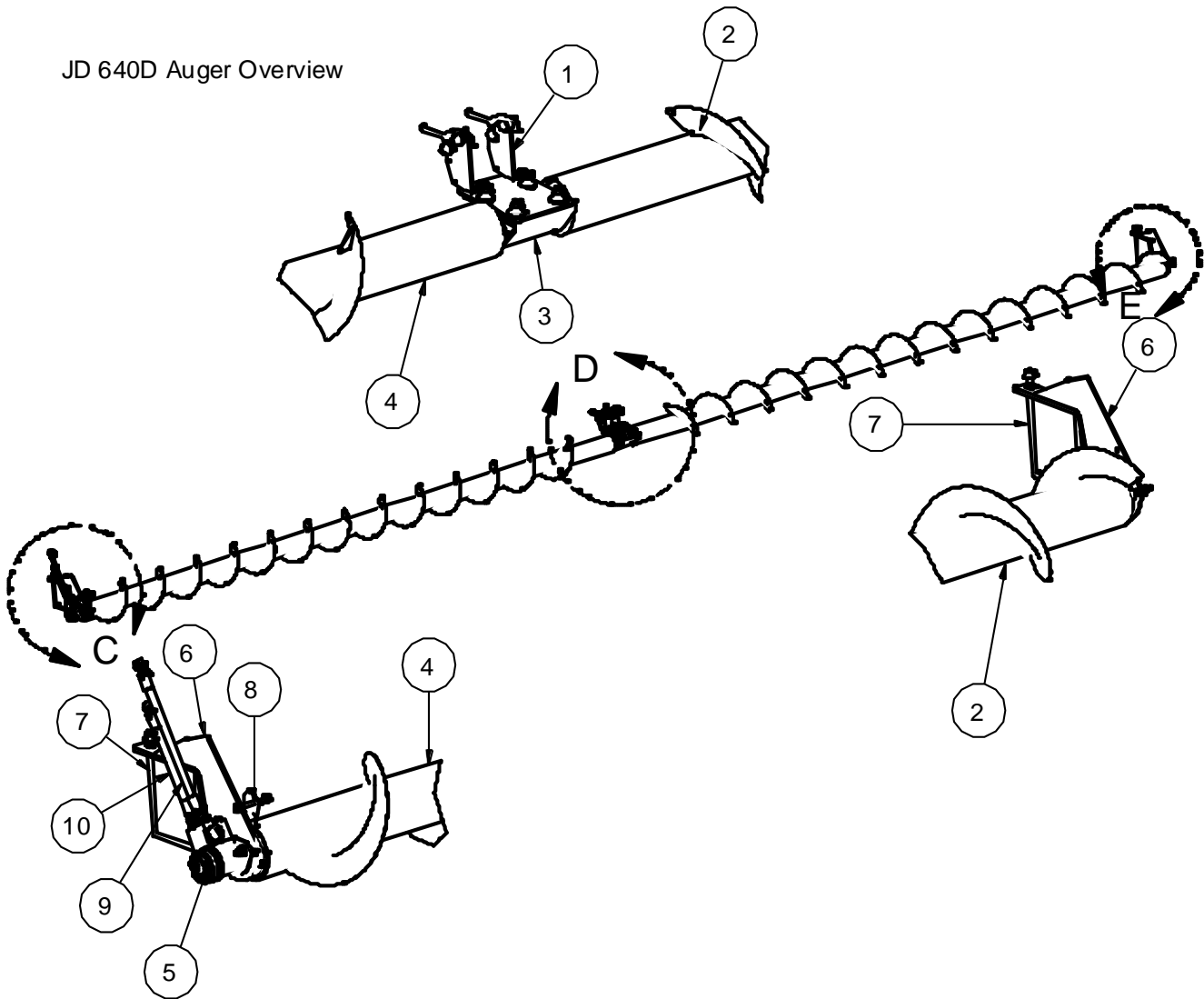
JD 635D Auger  
Overview



ITEM	QTY	PART NUMBER	ITEM	QTY	PART NUMBER
1	1	405720 center plastic guard	9	1	118824 hose assy 1_2 x 24 lg 8FFORM x 10MORB
2	1	405726 flap bolt on wldt 3in LH	10	1	405725 flap bolt on wldt 3in RH
3	1	117171 motor with flow control 7.6 danfoss	11	1	405087 plastic guard
4	2	100610 bolt 3-8 X 3 gr5 pltd nc	12	2	408378 5 ft Stripper Bar
5	1	408153 auger wldt RH JD635 12in dirdrv	13	2	408379 Stripper Bar 10 ft
6	2	101041 U bolt sq 1_2NC x 7-1_8 w x 11 lg	14	6	100975 5 16 x 1 25 carriage bolt
7	1	408156 auger wldt LH JD635 dirdrv	15	6	102122 5/16 nylock
8	1	118823 hose assy 1_2 x 49 lg 8FFORF x 10MORB	16	1	408512 mt center JD 635 COMBI MOUNT
			17	3	408510 motor brg mt wldt JD635 dirdrv
			18	1	John Deere 635 D Header 2009

## 5.2 405848 JD640 AUGER PARTS OVERVIEW

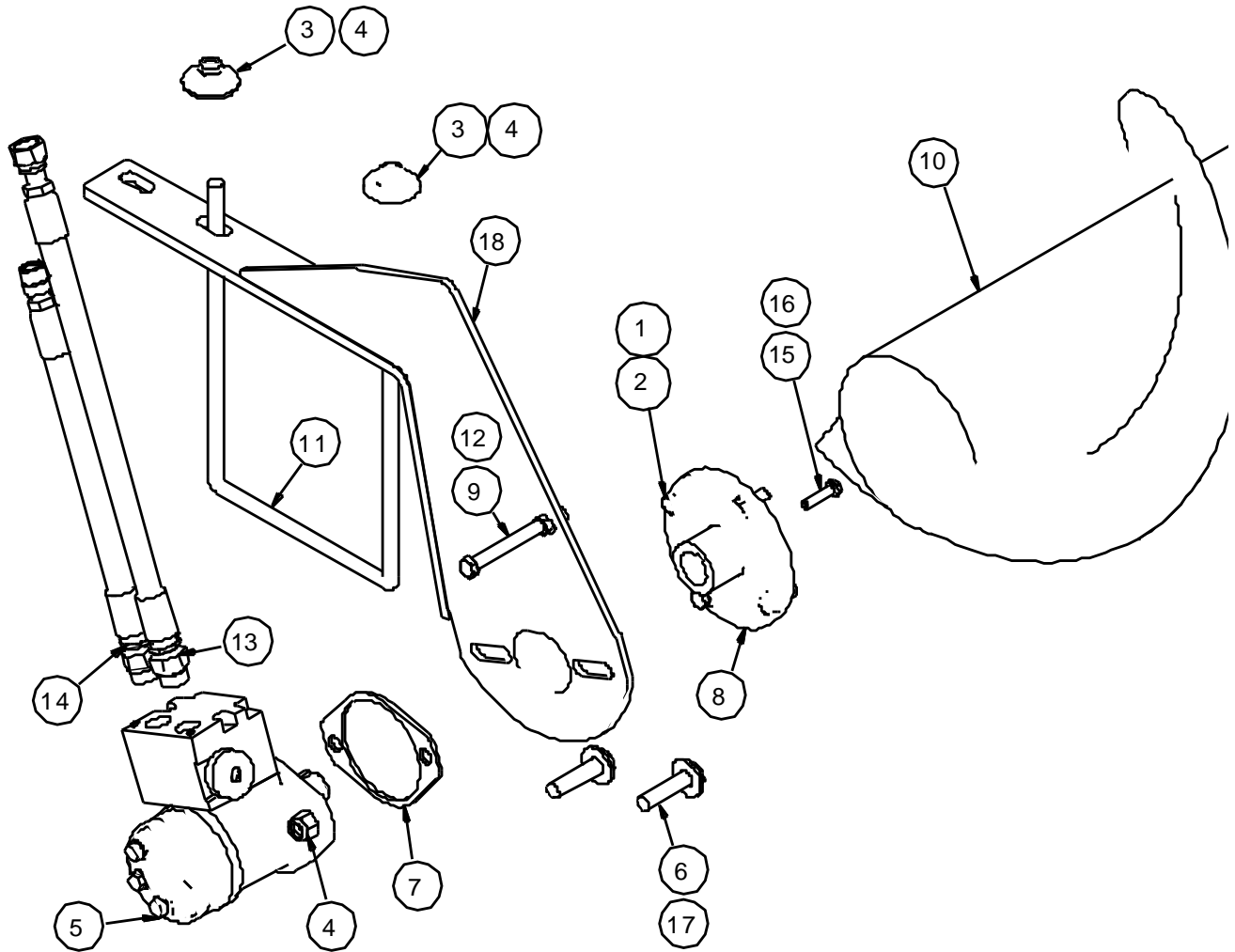
JD 640D Auger Overview



ITEM	QTY	PART NUMBER	ITEM	QTY	PART NUMBER
1	1	405973 JD640D 40ft Center Brg Mt Wldt	7	2	101041 U bolt sq 1_2NC x 7-1_8 w x 11 lg
2	1	408203 auger wldt LH JD640 dirdrv	8	1	100610 bolt 3-8 X 3 gr5 pltd nc
3	1	405978 plastic guard middle mt hole	9	1	118823 hose assy 1_2 x 49 lg 8FFORF x 10MORB
4	1	408200 auger wldt RH JD640 12" dirdrv	10	1	118824 hose assy 1_2 x 24 lg 8FFORF x 10MORB
5	1	117170 motor with flow control 5.9 danfoss	11	2	405979 JD640D CENTER MOUNT TEMPLATE
6	2	408150 motor brg mt wldt JD6XX dirdrv	12	1	408392 Stripper Bar Kit 40ft Augers

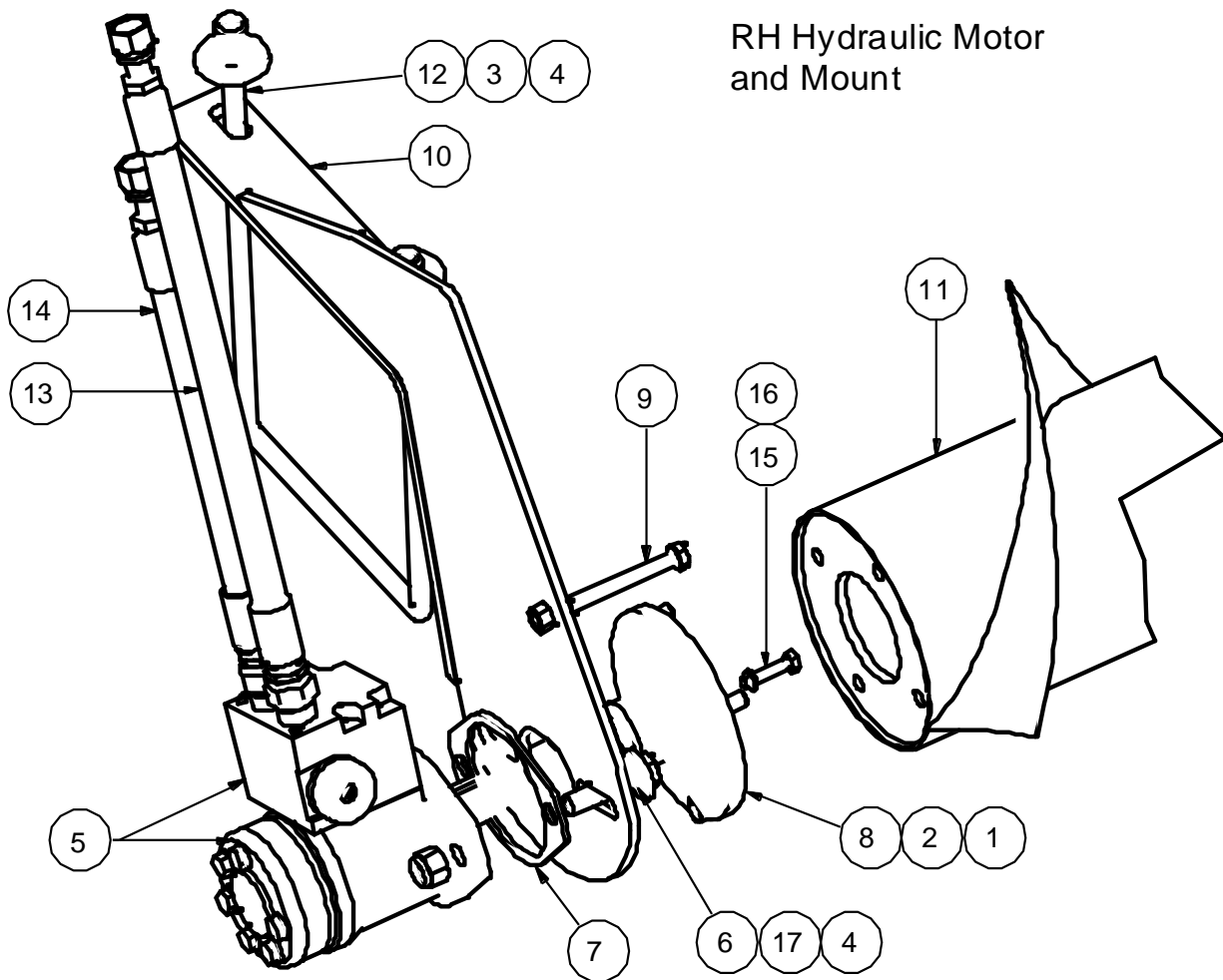
### 5.3 405846-847 JD630-635 SERIES RIGHT END DIRECT DRIVE

#### JD 630-635 RH HYDRAULIC MOTOR AND MOUNT ASSEMBLY



ITEM	QTY	PART NUMBER	ITEM	QTY	PART NUMBER
1	4	101145 lock washer 3/8"	11	2	101041 U bolt sq 1_2NC x 7-1_8 w x 11 lg
2	4	100602 bolt 3-8 X 1 gr5 pltd nc	12	1	102131 nut jam 3-8 nc gr5 1-2 HGT
3	8	101107 flat washer 5/8"	13	1	118823 hose assy 1_2 x 49 lg 8FFORF x 10MORB
4	8	102125 nut nylok 1/2" nc gr5 pltd	14	1	118824 hose assy 1_2 x 24 lg 8FFORM x 10MORB
5	1	117171 motor with flow control 7.6 danfoss	15	1	100404 HEX HD BOLTS 1 4 NC X 1 1 4
6	2	100703 bolt 1-2 X 2 gr5 pltd nc	16	1	101144 washer lock 1/4
7	1	407271 shim hyd motor mt AGCO 9250	17	2	101106 flat washer 1/2"
8	1	407105 direct drive motor adapter wldt	18	2	408510 motor brg mt wldt JD635 dirdrv
9	2	100610 bolt 3-8 X 3 gr5 pltd nc			
10	1	408153 auger wldt RH JD635 12in dirdrv			

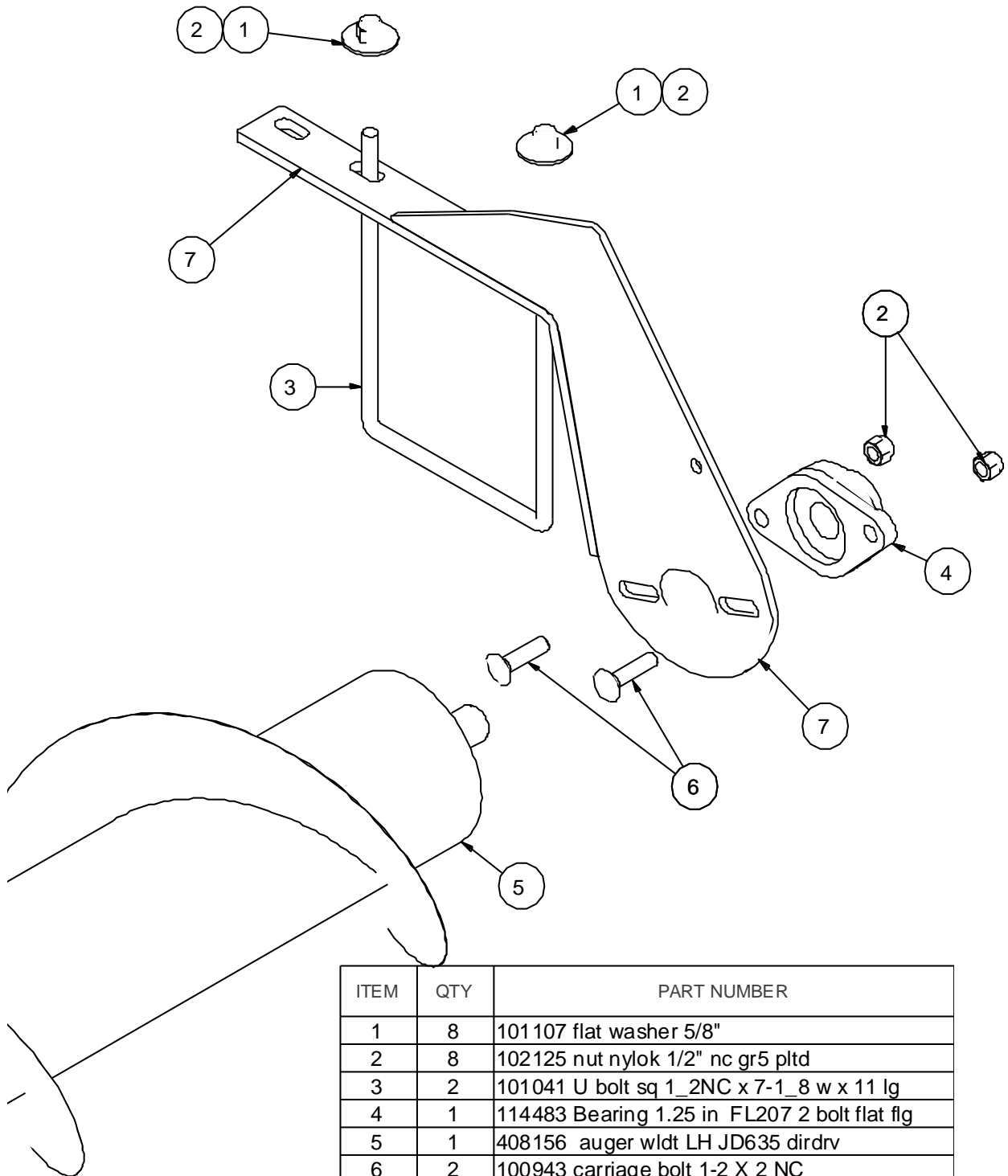
## 5.4 405848 JD640 SERIES RIGHT END DIRECT DRIVE



ITEM	QTY	PART NUMBER	ITEM	QTY	PART NUMBER
1	5	101145 lock washer 3/8"	11	1	408153 auger wldt RH JD635 12in dirdrv
2	5	100602 bolt 3-8 X 1 gr5 pltd nc	12	2	101041 U bolt sq 1_2NC x 7-1_8 w x 11 lg
3	8	101107 flat washer 5/8"	13	1	118823 hose assy 1_2 x 49 lg 8FFORF x 10MORB
4	8	102125 nut nylok 1/2" nc gr5 pltd	14	1	118824 hose assy 1_2 x 24 lg 8FFORM x 10MORB
5	1	117170 motor with flow control 5.9 danfoss	15	1	100404 HEX HD BOLTS 1/4 NC X 1- 1/4"
6	2	100703 bolt 1-2 X 2 gr5 pltd nc	16	1	101144 washer lock 1/4"
7	1	407271 shim hyd motor mt AGCO 9250	17	2	101106 flat washer 1/2"
8	1	407105 direct drive motor adapter wldt			
9	1	100610 bolt 3-8 X 3 gr5 NC pltd (RED)			
10	2	408150 motor brg mt wldt JD6XX dirdrv			

## 5.5 LEFT END MOUNT-JD 630-635

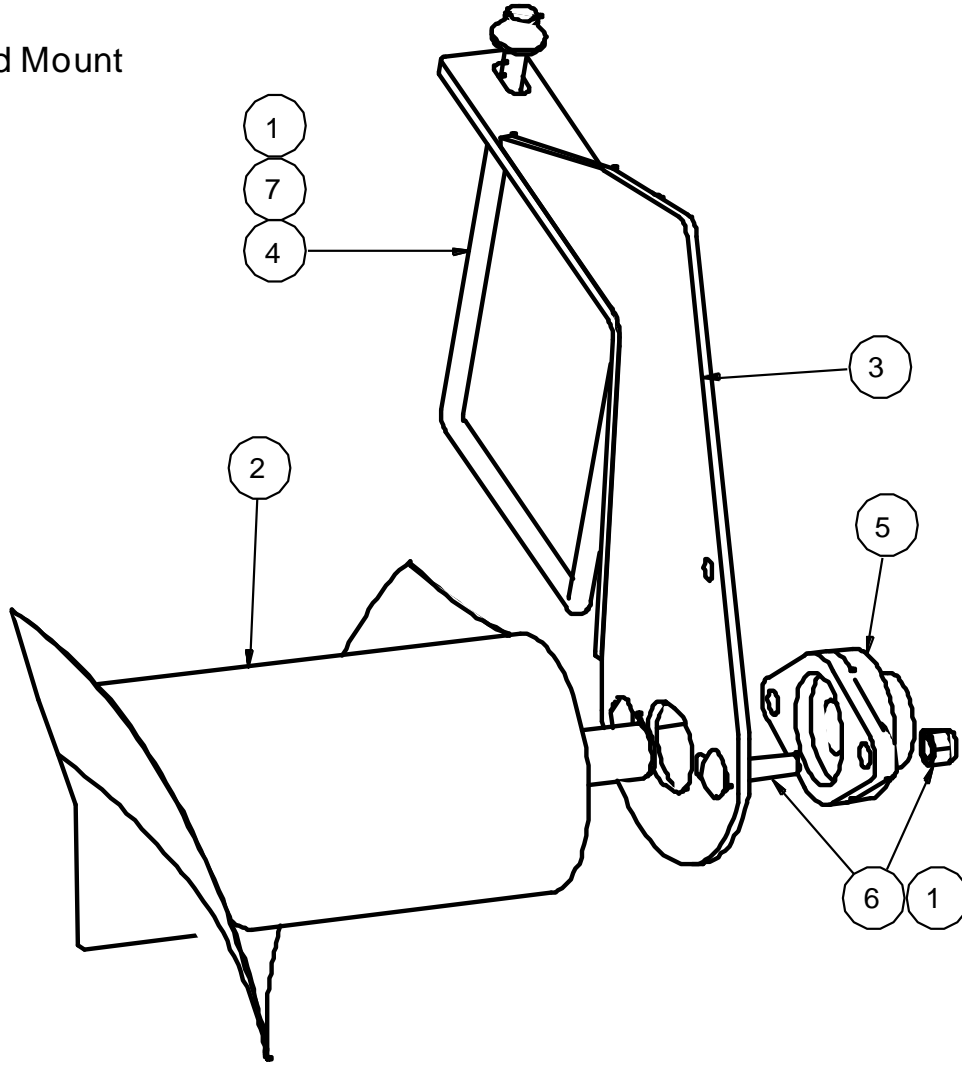
### JD 630-JD 635 LH END MOUNT ASSEMBLY



ITEM	QTY	PART NUMBER
1	8	101107 flat washer 5/8"
2	8	102125 nut nylok 1/2" nc gr5 pltd
3	2	101041 U bolt sq 1_2NC x 7-1_8 w x 11 lg
4	1	114483 Bearing 1.25 in FL207 2 bolt flat flg
5	1	408156 auger wldt LH JD635 dirdrv
6	2	100943 carriage bolt 1-2 X 2 NC
7	3	408510 motor brg mt wldt JD635 dirdrv

## 5.6 LEFT END MOUNT-JD 640

Left End Mount

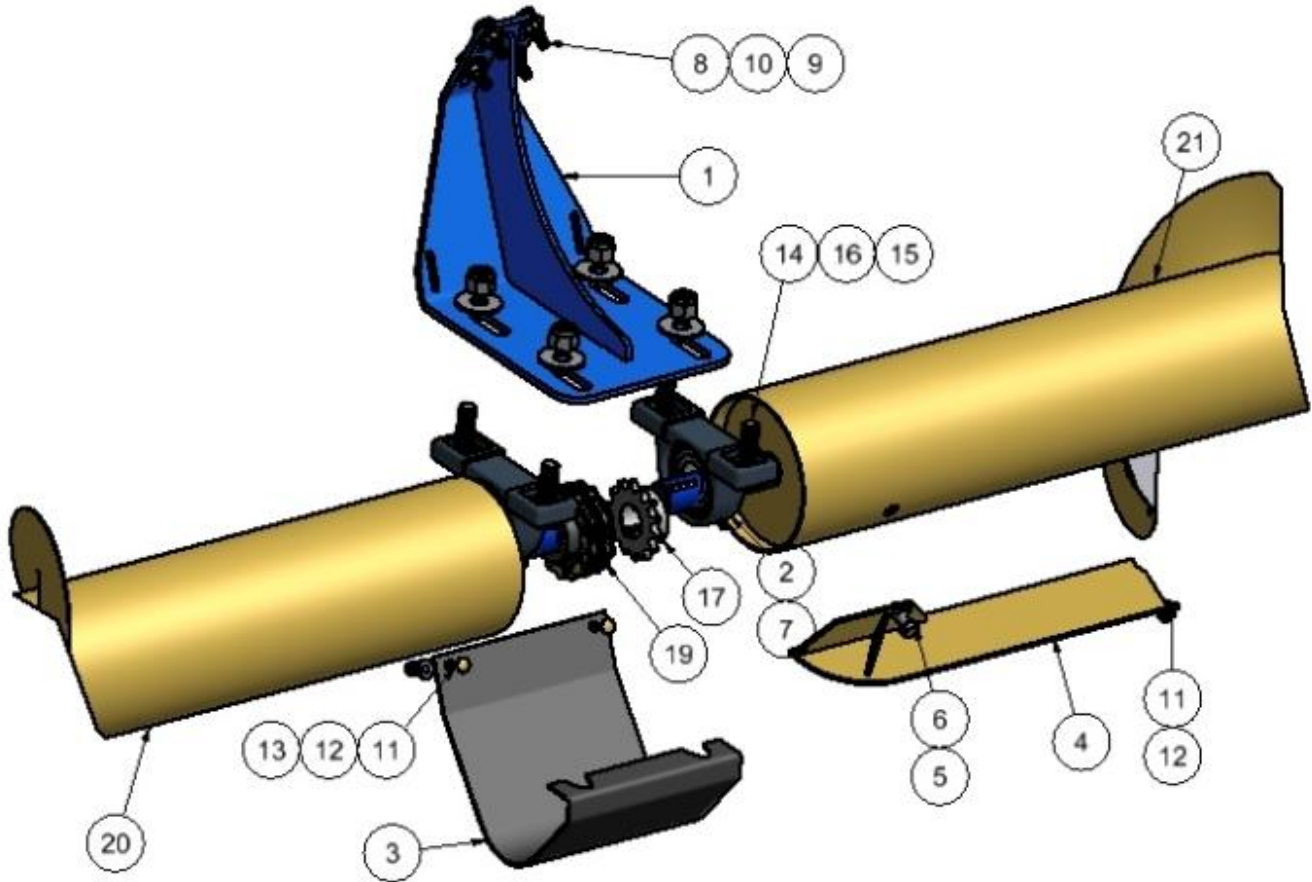


ITEM	QTY	PART NUMBER	ITEM	QTY	PART NUMBER
1	12	102125 nut nylok 1/2" nc gr5 pltd	5	1	114483 Bearing 1.25 in FL207 2 bolt flat flg
2	1	408203 auger wldt LH JD640 dirdrv	6	2	100943 carriage bolt 1-2 X 2 NC
3	2	408150 motor brg mt wldt JD6XX dirdrv	7	14	101106 flat washer 1/2"
4	2	101041 U bolt sq 1_2NC x 7-1_8 w x 11 lg			



## 5.7 CENTER MOUNT FOR MODEL 635-630D

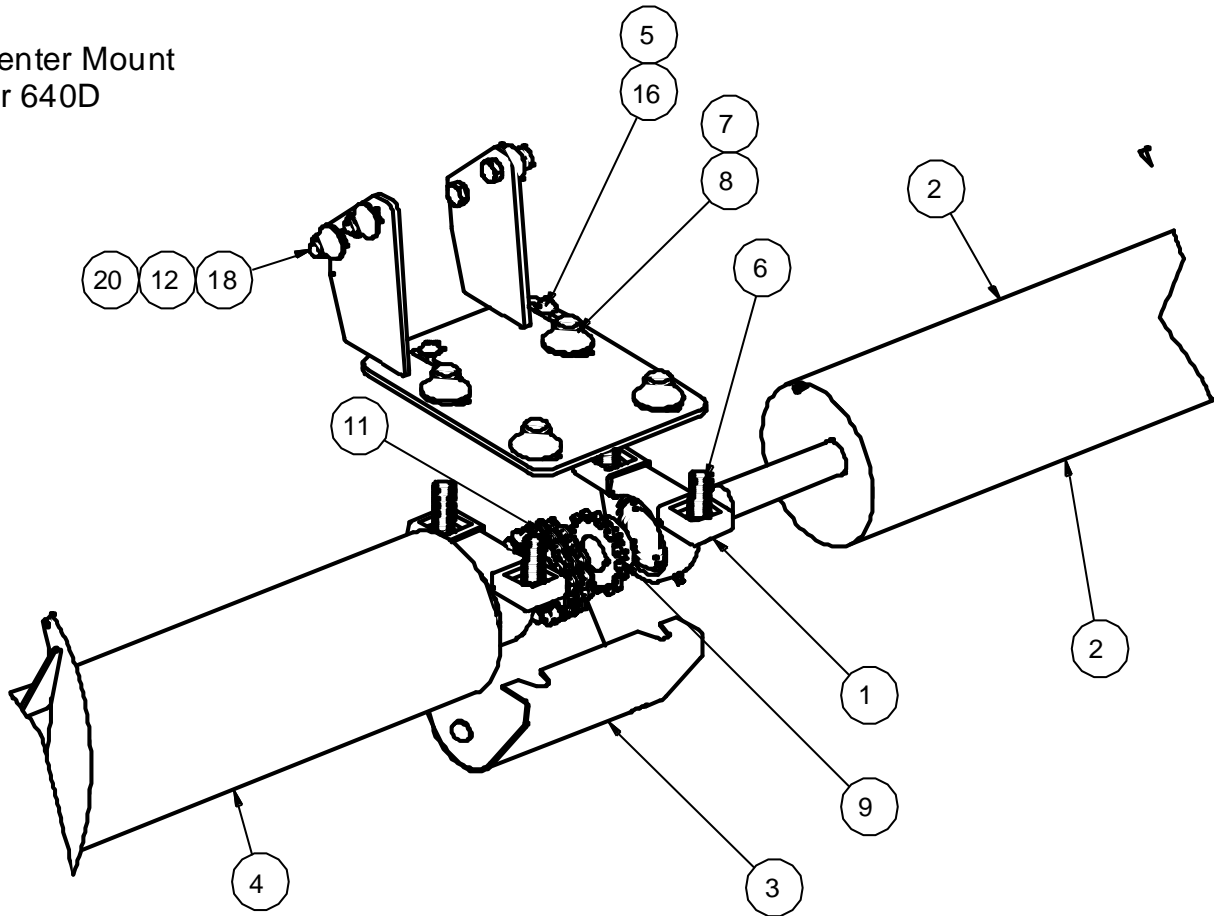
Center Mount and  
Coupling Detail



ITEM	QTY	PART NUMBER	ITEM	QTY	PART NUMBER
1	1	405715 mt center JD 635	14	4	100965 carriage bolt 5/8" X 2-1/4" nc
2	2	114470 pillow block SA207 2 bolt	15	8	101107 flat washer 5/8"
3	1	405720 center plastic guard	16	4	102127 nut nylok 5/8" nc gr5 pltd
4	1	405726 flap bolt on wldt 3in LH	17	2	114468 chain coupler 1-1/4" ID
5	2	101142 lock washer 7-16	18	2	405361 key 1/4" x 1/4" x 1"
6	2	100660 bolt 7-16 X 1 gr5 pltd nc	19	1	114469 chain 50 2R for chain coupler
7	2	114471 Bearing 1-1/4" SA207	20	1	408153 auger wldt RH JD635 12in dirdrv
8	4	100941 carriage bolt 3/8" X 1-1/2" nc	20	1	408289 auger wldt RH JD630 dirdrv
9	4	101105 flat washer 3/8"	21	1	408156 auger wldt LH JD635 dirdrv
10	5	102123 nut nylok 3/8" nc gr5 pltd	21	1	408286 auger wldt LH JD630 dirdrv
11	4	100966 carriage bolt 1/4" X 3/4" nc	22	1	405725 flap bolt on wldt 3in RH
12	4	102121 nut nylok 1/4" nc gr5 pltd	42	1	408160 motor brg mt wldt JD6XX dirdrv extnd
13	2	101103 flat washer 1/4"	43	1	405087 plastic guard

## 5.8 CENTER MOUNT FOR MODEL 640D

Center Mount  
for 640D



ITEM	QTY	PART NUMBER	ITEM	QTY	PART NUMBER
1	1	114470 pillow block SA207 2 bolt	1	1	405973 JD640D 40ft Center Brg Mt Wldt
4	2	102121 nut nylok 1/4" nc gr5 pltd	14	1	114471 Pillow Block Bearing Assy P207-SA207
5	4	101103 flat washer 1/4"	2	1	408203 auger wldt LH JD640 dirdrv
6	4	100965 carriage bolt 5/8" X 2-1/4" nc	16	2	100403 bolt 1-4 X 1 gr5 pltd nc
7	5	101107 flat washer 5/8"	3	1	405978 plastic guard middle mt hole
8	4	102127 nut nylok 5/8" nc gr5 pltd	18	4	100702 bolt 1-2 X 1 1-2 gr5 pltd nc
9	2	114468 chain coupler 1-1/4" ID	4	1	408200 auger wldt RH JD640 12" dirdrv
10	2	405361 key 1/4" x 1/4" x 1"	20	14	101106 flat washer 1/2"
11	1	114469 chain 50 2R for chain coupler	11	2	405979 JD640D CENTER MOUNT TEMPLATE
12	12	102125 nut nylok 1/2" nc gr5 pltd	12	1	408392 Stripper Bar Kit 40ft Augers

## 6 WARRANTY

1. Ag Shield Manufacturing warrants each new Ag Shield reconditioner to be free from factory defects in material and workmanship under normal use and service, when set up and operated in accordance with factory instructions for one year from the date of delivery to the original purchaser.
2. Ag Shield's obligation under this warranty is limited to the supplying of replacement parts which are defective due to factory workmanship or material.
3. Your Ag Shield Dealer is responsible for providing warranty labour. Credit for required labour is specifically agreed to on an individual case basis.
4. The warranty is void on any unit which has been tampered with, or modified in any way not authorized in writing by the factory.
5. This warranty is void on any unit which is subject to misuse, negligence or accident, or which has had the serial number tampered or removed.
6. A "Warranty Claim Form" (sample at end of handbook) must be submitted to Ag Shield with returned parts in order for parts to be considered for warranty examination.
7. A warranty registration page from the front of this manual must be returned to the factory in order to qualify for warranty examination.
8. All returned parts must be sent to the factory freight prepaid, and warranty parts will be returned to you freight collect.
9. Replacement parts shipped pending receipt of parts for examination will be invoiced, and remain on your account until such time as examination indicates that a credit for those parts be issued or that payment is due.
10. Parts not returned for warranty examination within 30 days must be paid for at that time. Ag Shield will immediately reimburse any cash paid for items that are later determined defective.
11. Warranty terms and conditions are subject to provincial and state legislation.



WARRANTY CLAIM FORM

Dealer		
Address		
City	State/Province	Zip/Postal

**Ag Shield Mfg**  
 Box 9, Benito,  
 MB, R0L 0C0  
 ph 800-561-0132  
 fax 204-539-2130  
 ph 204-539-2000i

End User		
Address		
City	State/Province	

DATE OF SALE	DATE FAILED	REPAIR DATE	ACRES/HOURS	MODEL	SERIAL NUMBER
--------------	-------------	-------------	-------------	-------	---------------

LABOUR HOURS	LABOUR RATE	LABOUR AMOUNT	PARTS MUST BE RETURNED TO BENITO MB FREIGHT PREPAID TO BE CONSIDERED FOR WARRANTY. DATE SHIPPED		
--------------	-------------	---------------	---	--	--

QUANTITY ITEM	PART NUMBER	DESCRIPTION	PRICE EACH	TOTAL PRICE	DESCRIBE THE CAUSE OF FAILURE AND CORRECTIVE ACTION TAKEN	APPROVE /REJECT
1						
2						
3						
4						
5						
6						
7						
8						

I CERTIFY THAT THE INFORMATION IS ACCURATE AND THAT THE PARTS WERE REPLACED ON THE MACHINE	PARTS		DATE PARTS RECD	RECD BY
	LABOUR		ITEMS TO SUPPLIERS	
	TOTAL			

SHADED AREAS AG SHIELD USE ONLY ---PLEASE ADD DETAILS FOR ITEM NUMBERS ON BACK

